

FOR CONTINUATION SEE BELOW



FOR CONTINUATION SEE DRAWING 2

GENERAL NOTES
(1) For Typical Proposed Road Cross Section See Drawing No. 4

REVISIONS

NO.	REVISIONS	DATE	APPROVED

REVISIONS

DATE:

DIRECTOR OF ENGINEERING

CITY OF BARRIE APPROVED

DATE:

DIRECTOR OF ENGINEERING

BRYNE DRIVE

ALTERNATIVE 4 - 5 LANE

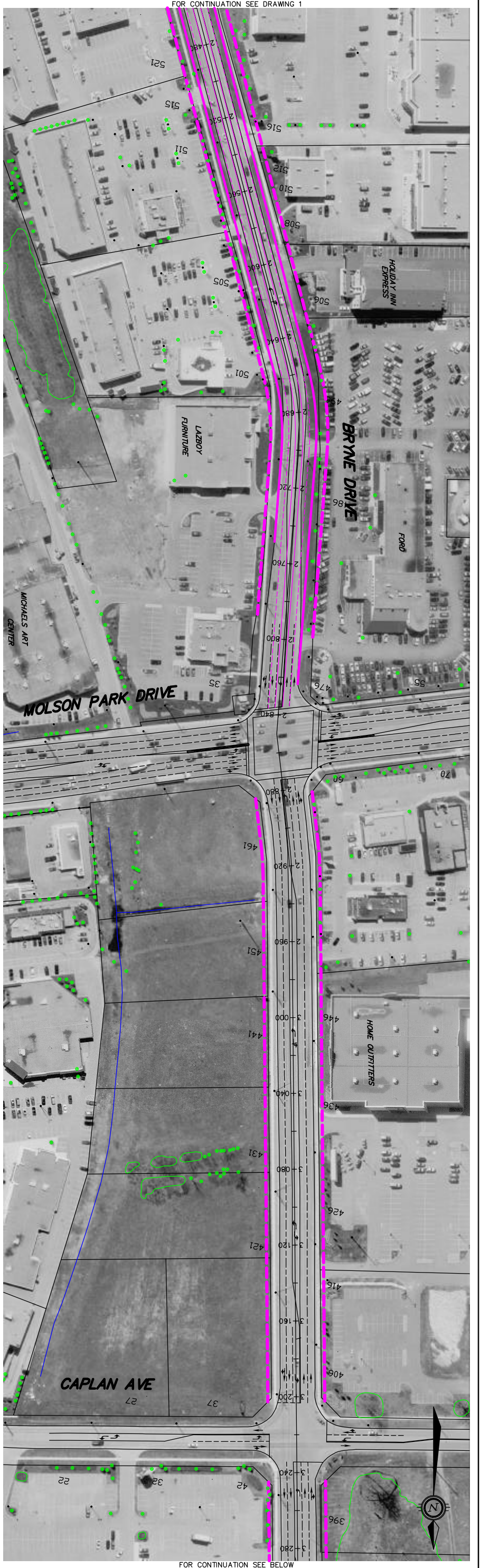
SCALE: HOR. 1:1000
VERT. 1:100

DESIGN R.S.
REVIEWED R.F.

DATE: 2005/01/28

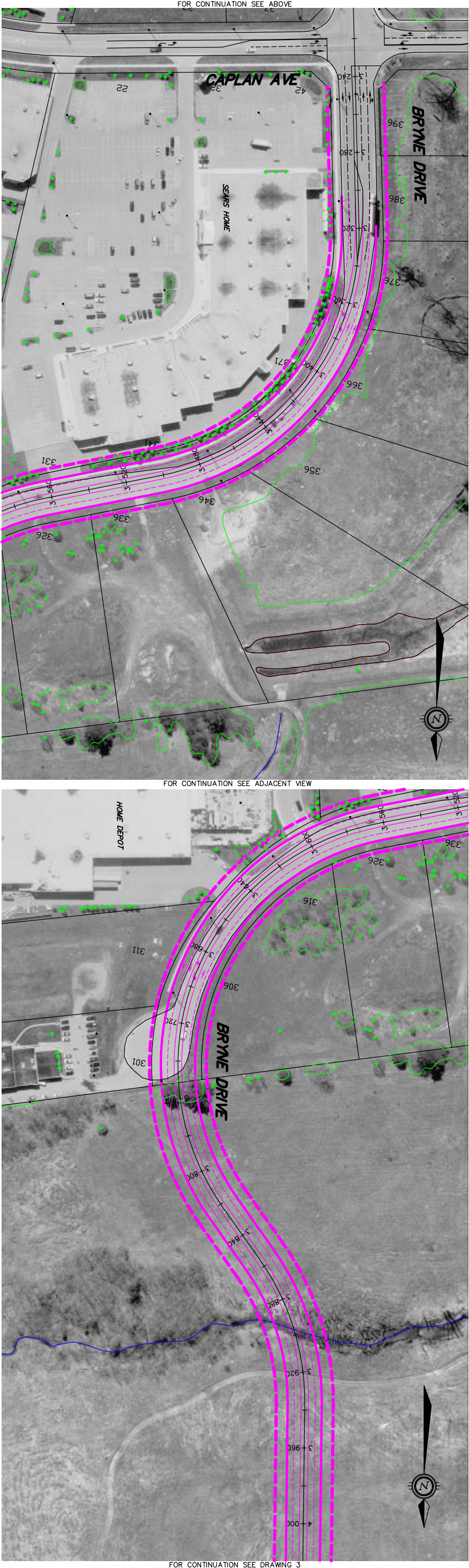
DRAWING NO. 1
SHEET NO.

CITY OF BARRIE
ENGINEERING DEPARTMENT



FOR CONTINUATION SEE DRAWING 1

FOR CONTINUATION SEE BELOW



FOR CONTINUATION SEE ABOVE

FOR CONTINUATION SEE ADJACENT VIEW

FOR CONTINUATION SEE DRAWING 3

GENERAL NOTES
 (1) For Typical Proposed Road Cross Section See Drawing No. 4

BENCH MARKS

NO.	REVISIONS	DATE	APPROVED

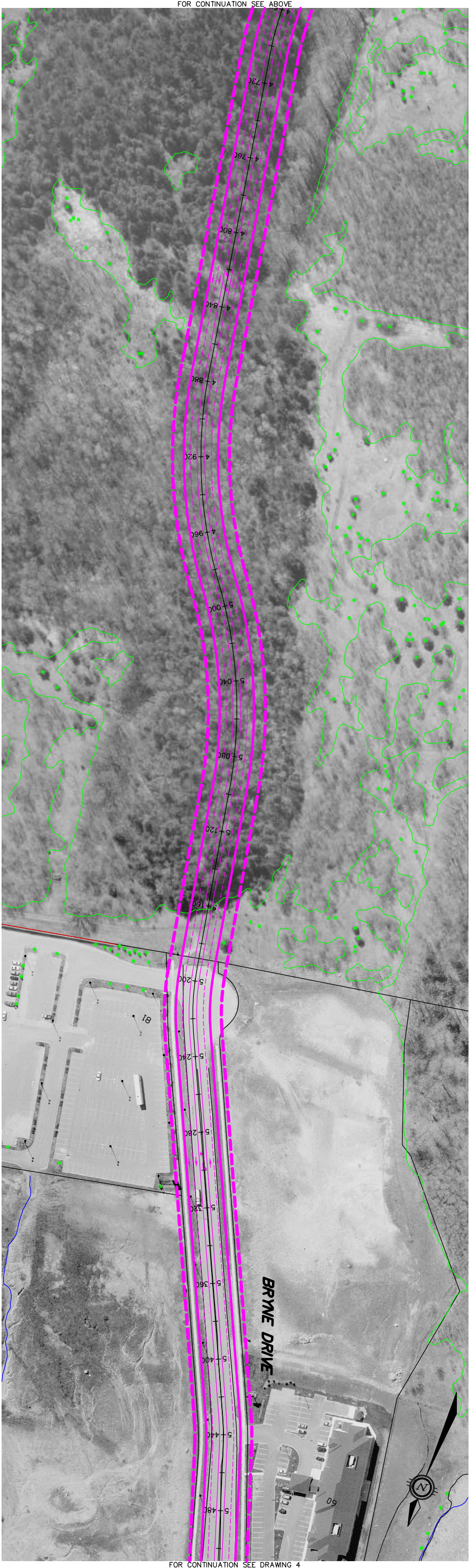
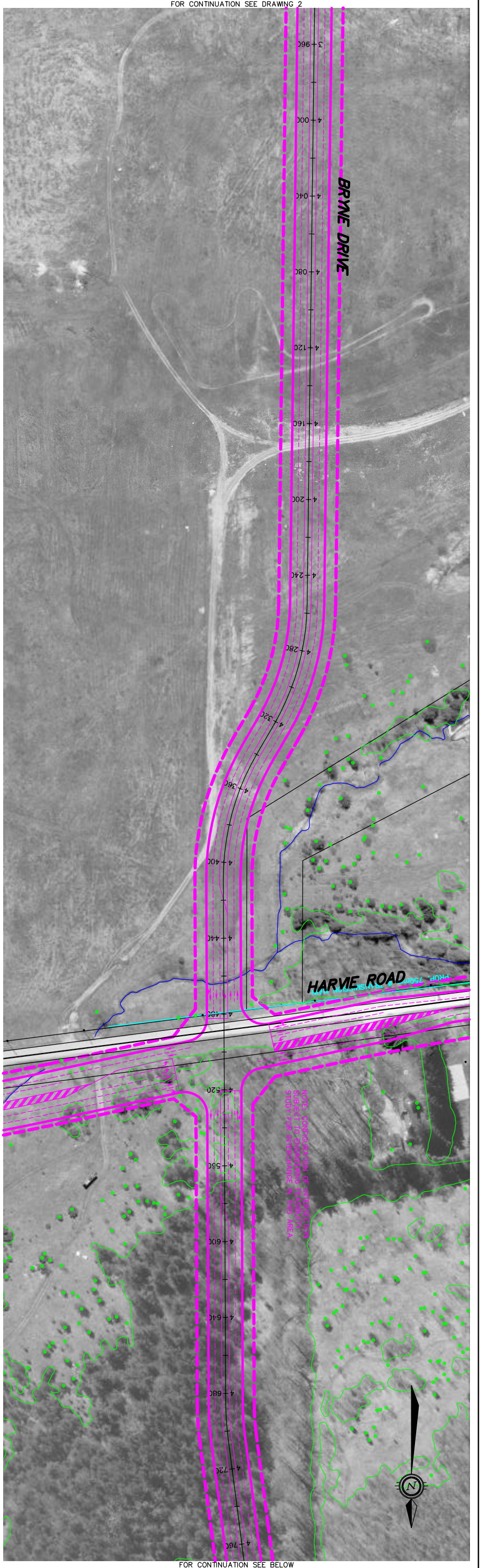
CITY OF BARRIE
 APPROVED
 DATE:
 DIRECTOR OF ENGINEERING

BRYNE DRIVE
 ALTERNATIVE 4 - 5 LANE



CITY OF BARRIE
 ENGINEERING DEPARTMENT

SCALE HORIZ. 1:1000	VERT. 1:100	DRAWING NO. 2
DESIGN R.S.	DRAWN R.S.	SHEET NO.
REVISED R.F.	DATE 2005.01.28	




GENERAL NOTES
 (1) For Typical Proposed Road Cross Section See Drawing No. 4

BENCH MARKS

NO.	REVISIONS	DATE	APPROVED

CITY OF BARRIE
 APPROVED
 DATE:
 DIRECTOR OF ENGINEERING

BRYNE DRIVE
 ALTERNATIVE 4 - 5 LANE

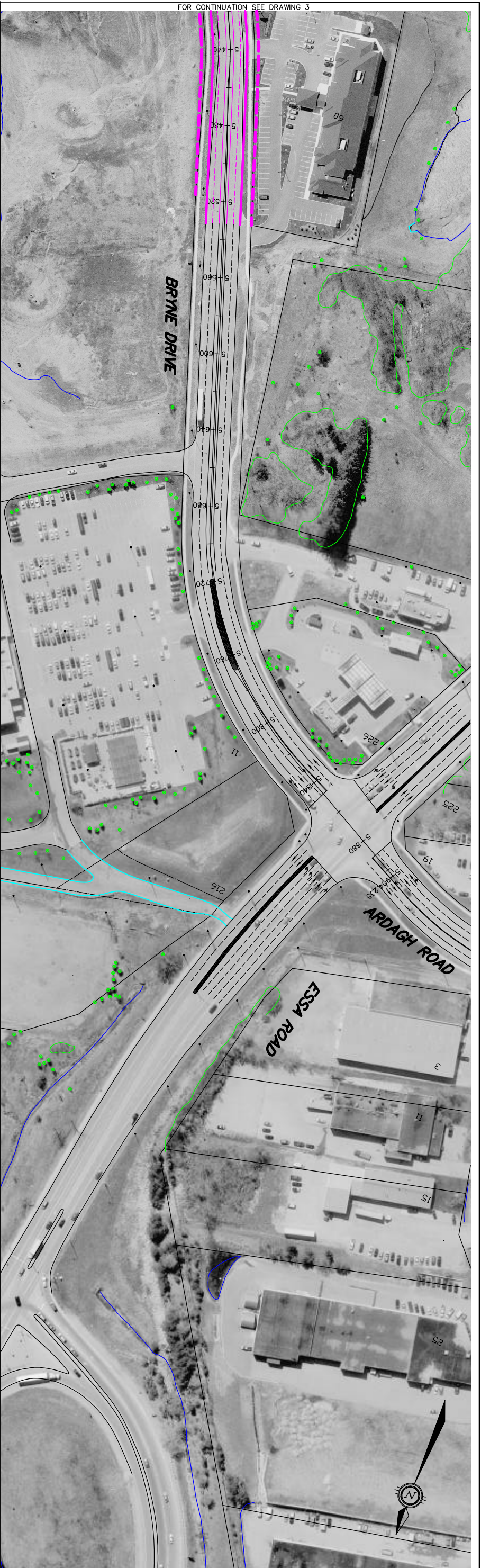


CITY OF BARRIE
 ENGINEERING DEPARTMENT

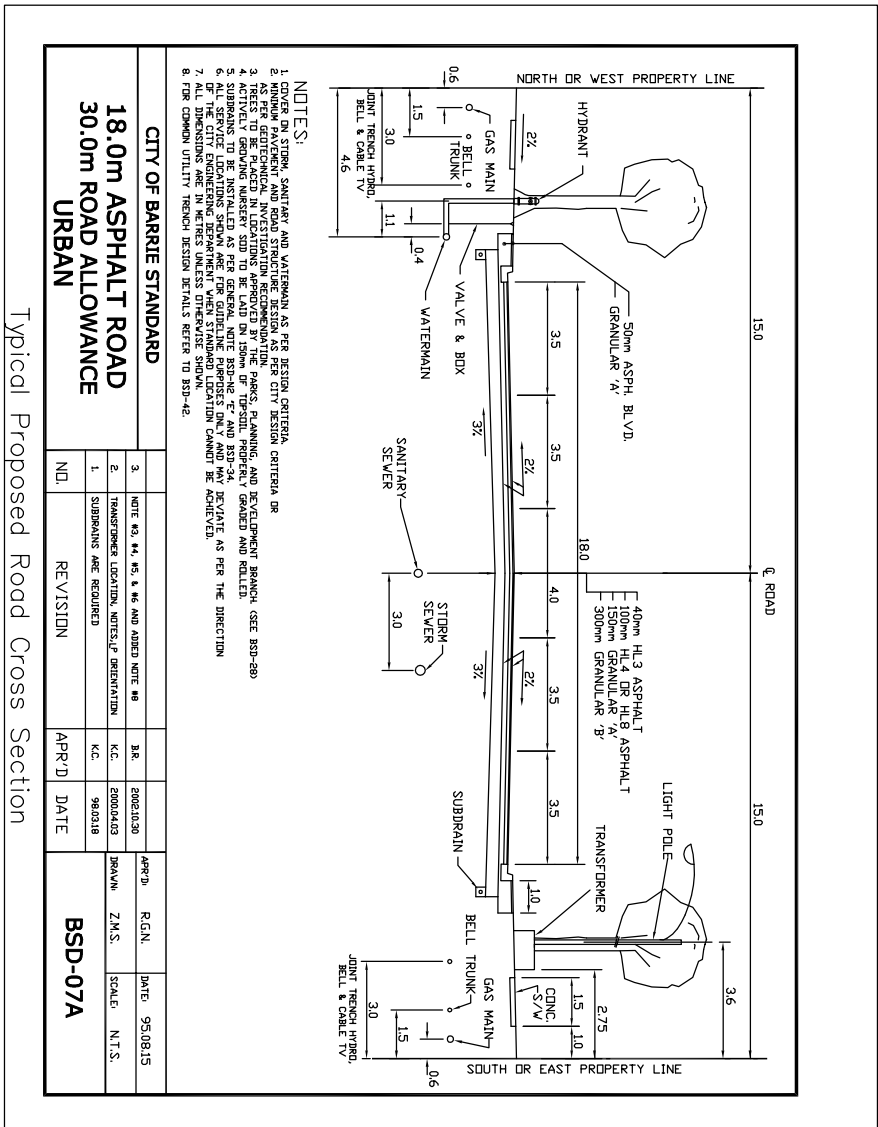
SCALE HDR. 1:1000
 DESIGN R.S.
 REVISED R.F.

VERT. 1:100
 DRAWN R.S.
 DATE 2005.01.28

DRAWING NO. 3
 SHEET NO.



FOR CONTINUATION SEE DRAWING 3



Typical Proposed Road Cross Section

GENERAL NOTES

BENCH MARKS

NO.	REVISIONS	DATE	APPROVED

CITY OF BARRIE
APPROVED
DATE:
DIRECTOR OF ENGINEERING

BRYNE DRIVE

ALTERNATIVE 4 – 5 LANE

CITY OF BARRIE
ENGINEERING DEPARTMENT

SCALE HDR. 1:1000
DESIGN R.S.
REVIEWED R.F.

VERT. 1:100
DRAWN R.S.
DATE 2005/01/28

DRAWING NO. 4
SHEET NO.