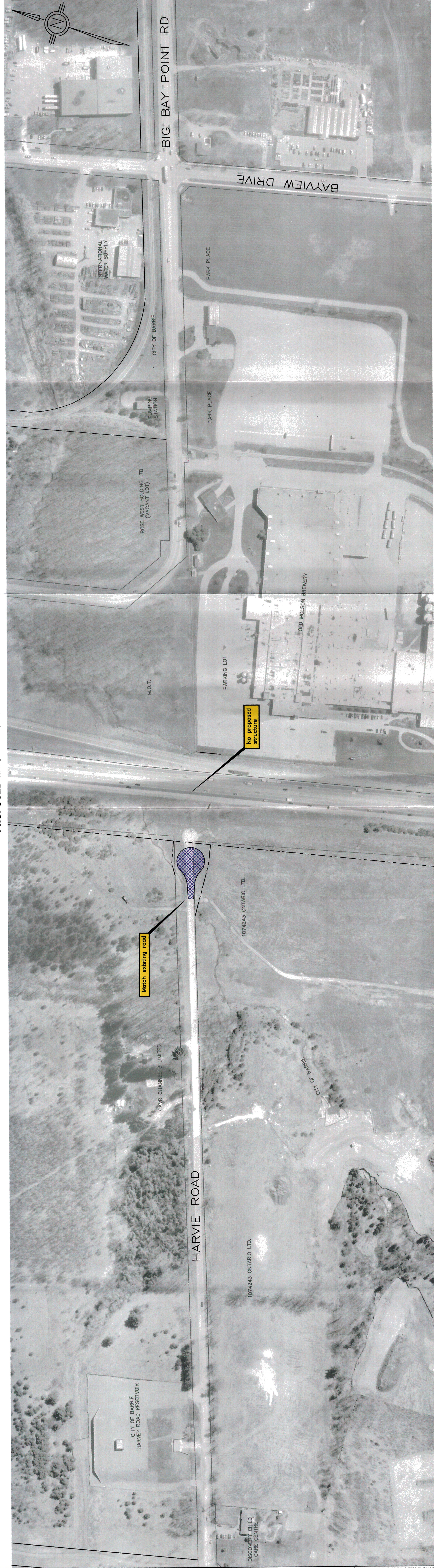
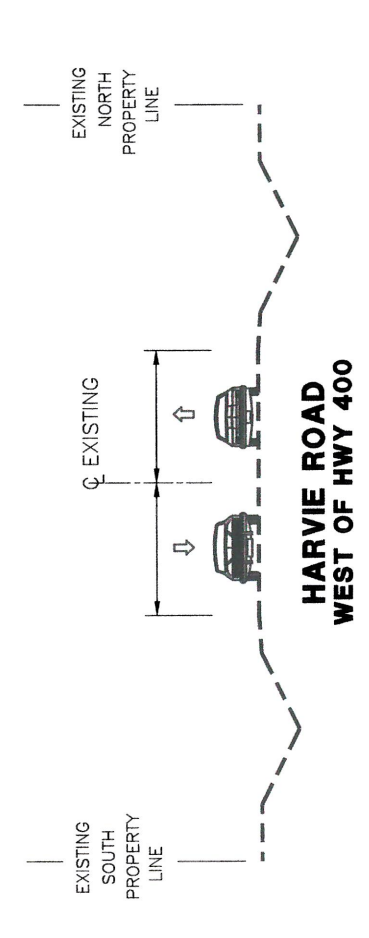


PROPOSED MTO IMPROVEMENTS

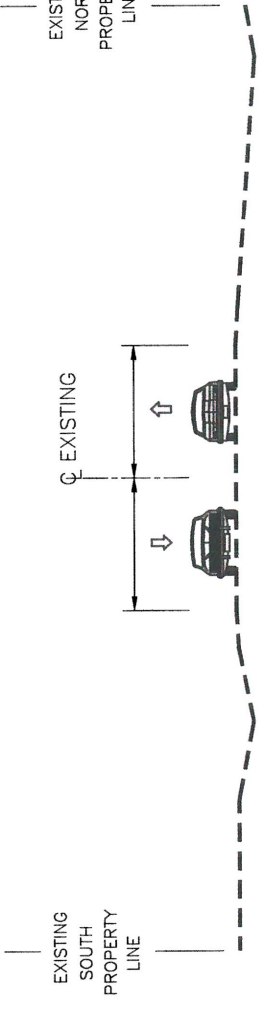


MTO PROPOSED ROAD CROSS SECTIONS

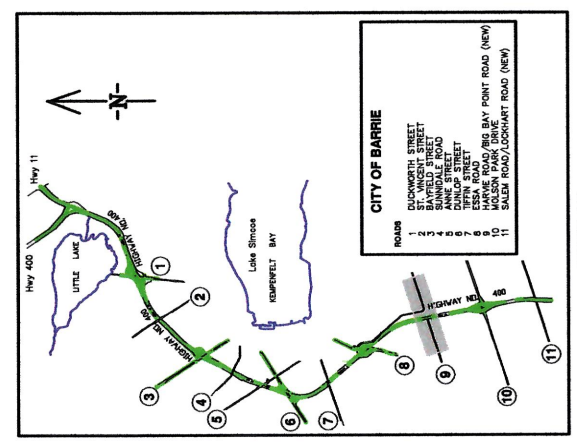


HARVIE ROAD WEST OF HWY 400

NO PROPOSED STRUCTURE BY MTO AT HWY 400



BIG BAY POINT ROAD WEST OF HWY 400



LEGEND

- Proposed MTO Improvements
- Property Requirements Identified by MTO
- Proposed Bypass (MTO)

No.	Revisions	Description	Date

City of Barrie
Highway 400 Crossing Streets EA

HARVIE ROAD/BIG BAY POINT ROAD PROPOSED MTO IMPROVEMENTS

Anley
CONSULTING ENGINEERS ARCHITECTS

Project No: 03-2189 Scale: 1:2000
 Project Manager: PAM Drawn By: DEB, GCC
 Location: G.S./CAD Checked By: PMA
 File Name: PRELIMINARY Date Issued: NOV. 2004
 Figure No. 9B

DILLON
CONSULTING