



**COMMITTEE OF ADJUSTMENT
PUBLIC NOTICE OF HEARING
SUBMISSION NO. B14/21**

TAKE NOTICE that an application has been received from **KLM Planning Partners c/o Keith MacKinnon on behalf of Mortgagebrokers.com Financial Group of Companies Inc.** for consent under Section 53 of the *Planning Act*, R.S.O. 1990, c. P.13, as amended for a consent to a conveyance of property for residential purposes.

IN THE MATTER OF the premises described as Plan 51M-777 Blocks 192 and 193 and known municipally as **18 Prince Edward Place** in the City of Barrie.

The property is zoned Residential Single Detached Dwelling Second Density (R2).

The application, if granted by the Committee of Adjustment, will serve to permit the creation of a new portion of land to be merged with abutting property known municipally as 18 Prince Edward Place.

The severed lands (Part 12) propose to have a lot area of approximately 124.9 square metres and merge with abutting lands known as Part 3, Block 193.

The retained lands (Part 1(Block 192), Part 2, Part 10 and Part 11) propose to have a lot area of 834.6 square metres and a proposed lot frontage of 15 metres on **Prince Edward Place**.

This application will be heard concurrently with applications B15/21 and B21/21.

TAKE FURTHER NOTICE that the Committee of Adjustment public hearing has been scheduled for **Wednesday, June 23, 2021**. With the current restrictions on public gatherings due to COVID-19, this public meeting will be held in a virtual forum with electronic participation. The application and others will be heard commencing at **5:00 p.m. via ZOOM**.

To participate in the virtual planning meeting, you will need access to a computer with internet service or a telephone. For information on how to register for the meeting please go to: www.barrie.ca/cofa.

Notices are sent to all property owners shown on the last assessment records within 60m of the subject property.

Although this is a public hearing, you are not required to attend unless you wish to speak to the application. If you have specific comments regarding this application, you may submit comments to the Secretary-Treasurer of the Committee of Adjustment at cofa@barrie.ca.

Every attempt should be made to file your submission six days prior to the Public Hearing date. Notice of the decision will be provided to each person who appeared in person or by authorized representative at the hearing and who files with the Secretary-Treasurer a written request for notice of the decision. If you do not attend, the hearing will proceed in your absence and you will receive no further notice. You must register and attend the hearing to receive further notice.

For more information on the application, including plans filed with the application, please email cofa@barrie.ca. Inquiries by phone can be made through Service Barrie at (705) 726-4242 during regular business hours. If you require any language interpreters, the City of Barrie, upon request, will provide language interpreters at the public hearing.

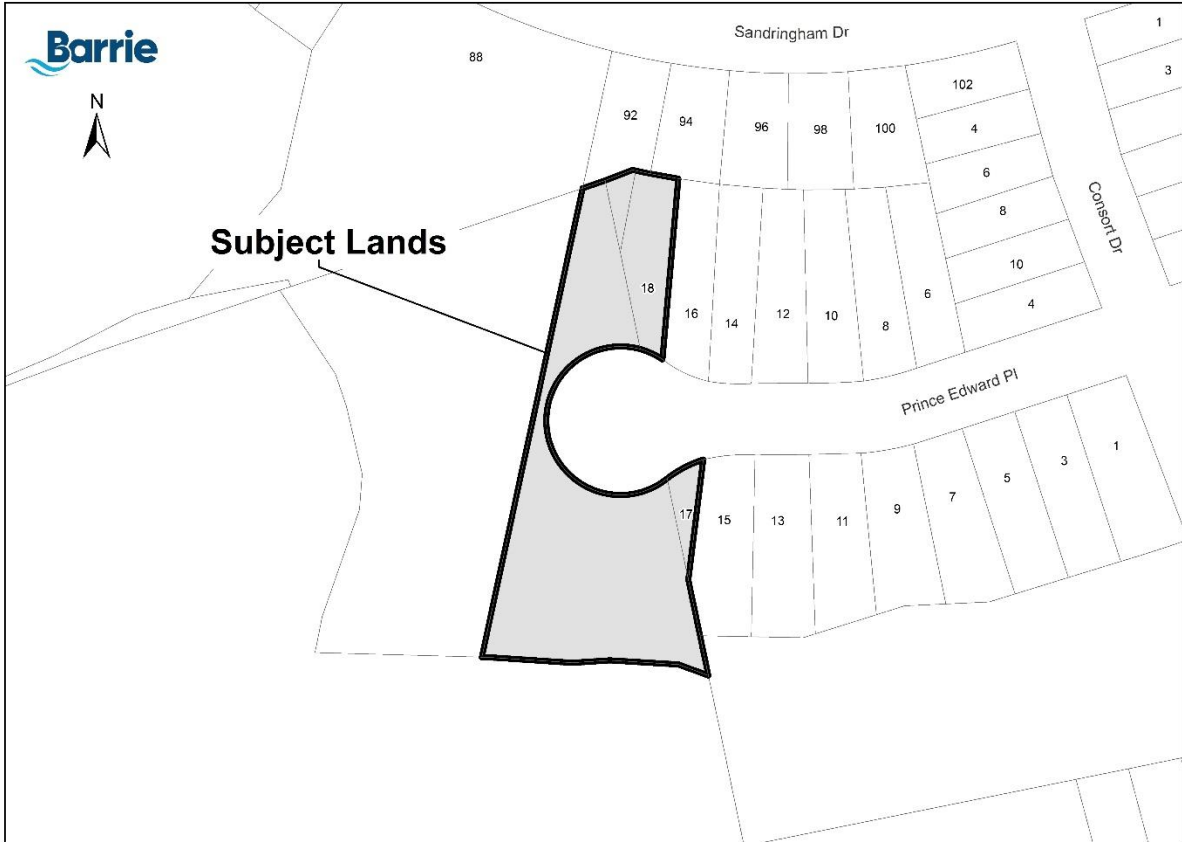
To view this notice online, please visit our website at www.barrie.ca/cofa

Dated: June 8, 2021

Janice Sadgrove
Secretary-Treasurer



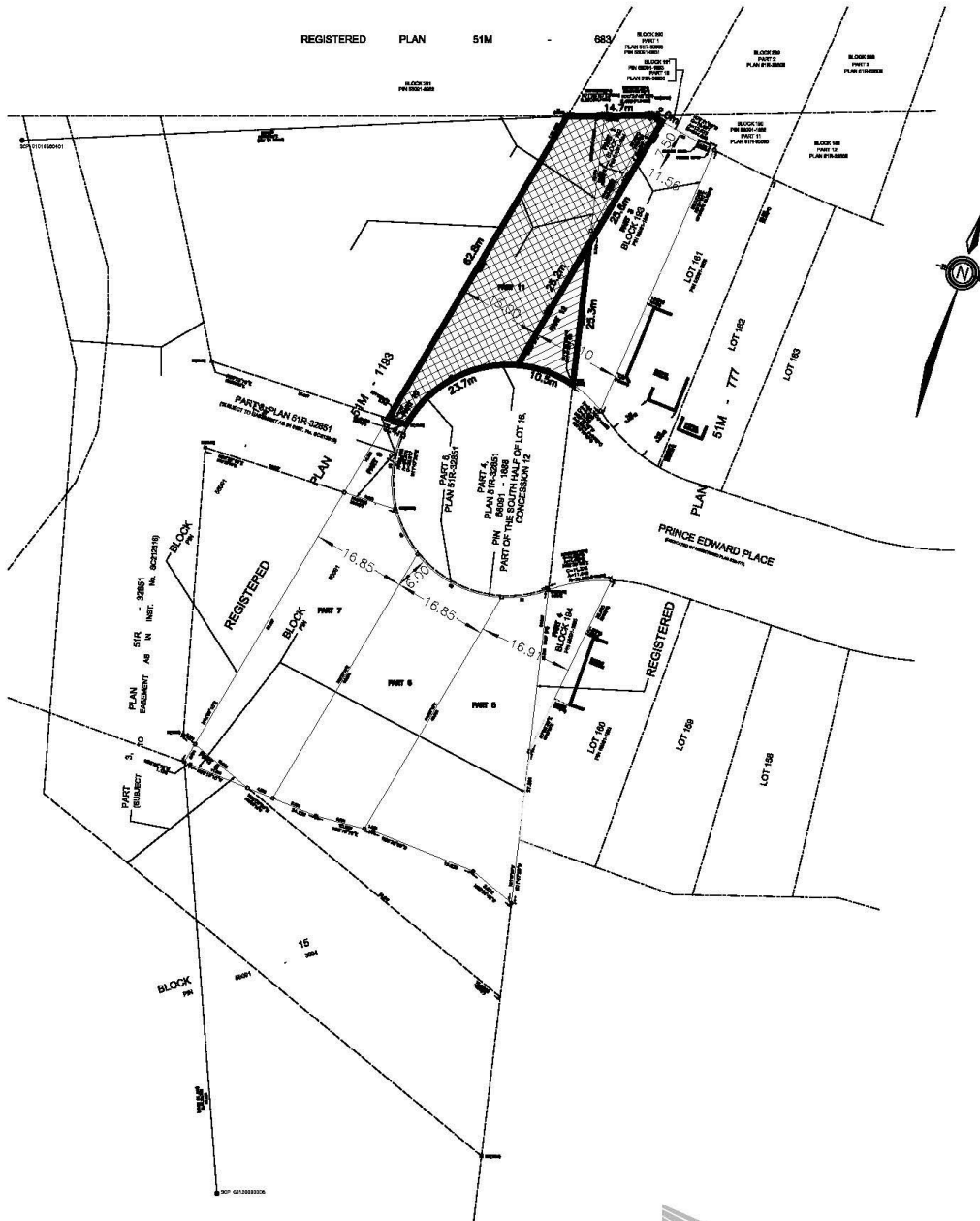
COMMITTEE OF ADJUSTMENT
KEY MAP
SUBMISSION NO. B14/21
18 PRINCE EDWARD PLACE




17/18 Prince Edward Pl, Barrie - ON
Blocks 192/193/194 51M-777
and Block 13 51M-1193

Development Services
6/4/2021

CONSENT SKETCH



 **RETAINED LAND**
 834.6m²

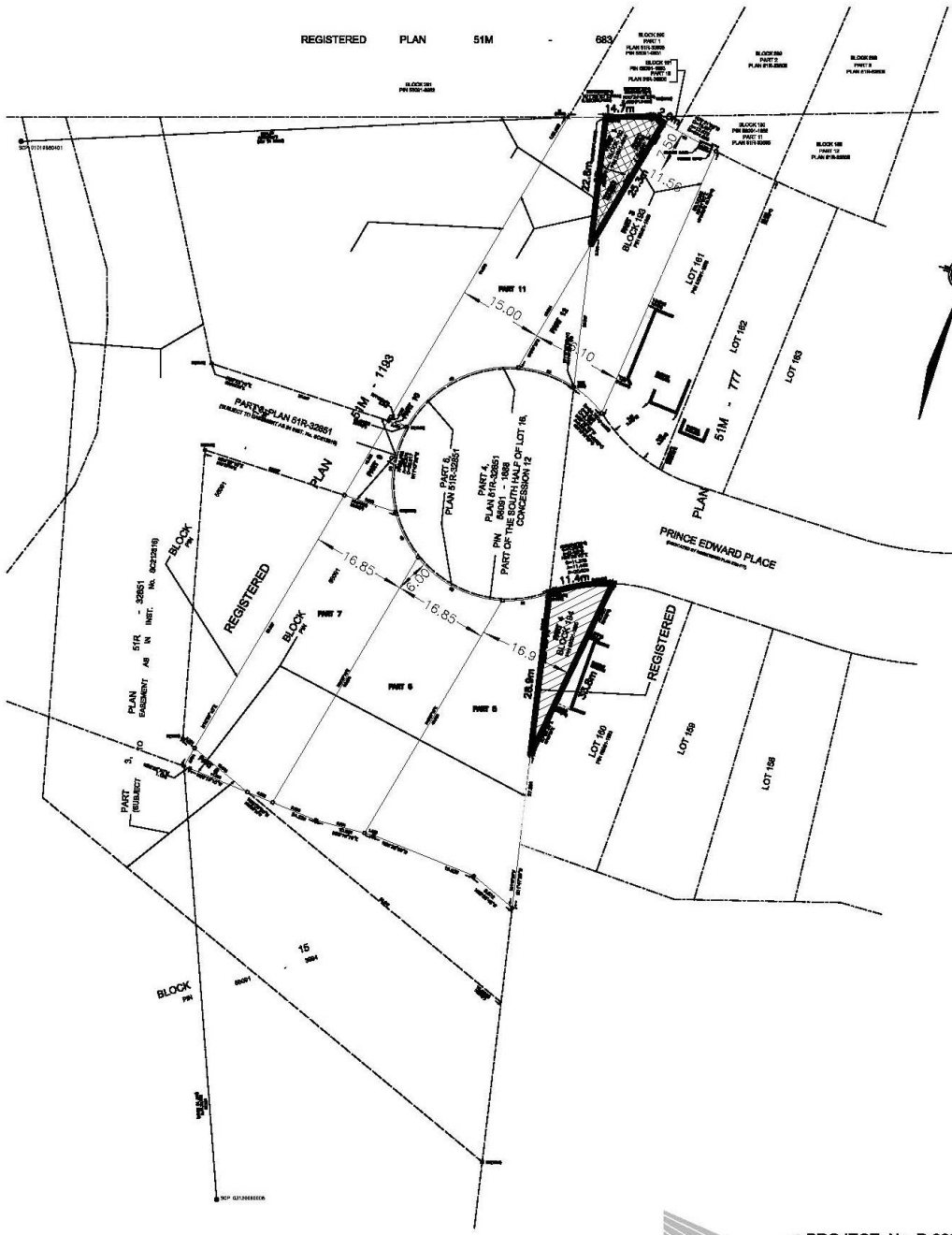
 **LOT ADDITION**
 125.4m²

PROJECT No. P-3239
 3239-CONSENT SKETCH 3 MAY 11, 2021
 SCALE: 1:1000
KLM DWG. No. - 21:1
 PLANNING PARTNERS INC. 54 JUNCTION DRIVE - UNIT 111, COACODIO ONTARIO L4C 3P5
 TEL: (905) 859-4083 FAX: (905) 859-0097 info@klmpartners.com
 Planning • Design • Development



COMMITTEE OF ADJUSTMENT
 SEVERANCE SKETCH
 SUBMISSION NO. B14/21
 18 PRINCE EDWARD PLACE

CONSENT SKETCH



 LAND TO BE
 ADDED TO
 PART 11
 122.0m²

 LAND TO BE
 ADDED TO
 PART 5
 162.9m²

KLM
 PLANNING PARTNERS INC.
 PROJECT No. P-3239
 3239-CONSENT SKETCH 4 MAY 11, 2021
 SCALE: 1:1000
DWG. No. - 21:1
 84 JARDIN DRIVE - UNIT 18, CONCORD, ONTARIO L4K 3P2
 TEL: (905) 889-4025 FAX: (905) 889-0087 info@klorpartnership.com
 Planning • Design • Development



COMMITTEE OF ADJUSTMENT
DRAFT R-PLAN
SUBMISSION NO. B14/21
18 PRINCE EDWARD PLACE

WITH 0. METERS AND COORDINATES
SHOWING THE POSITION OF ALL LOTS
AND CAN BE CONVERTED TO
FT/F BY DIVIDING BY 0.3048.

REGISTERED PLAN 51M

