

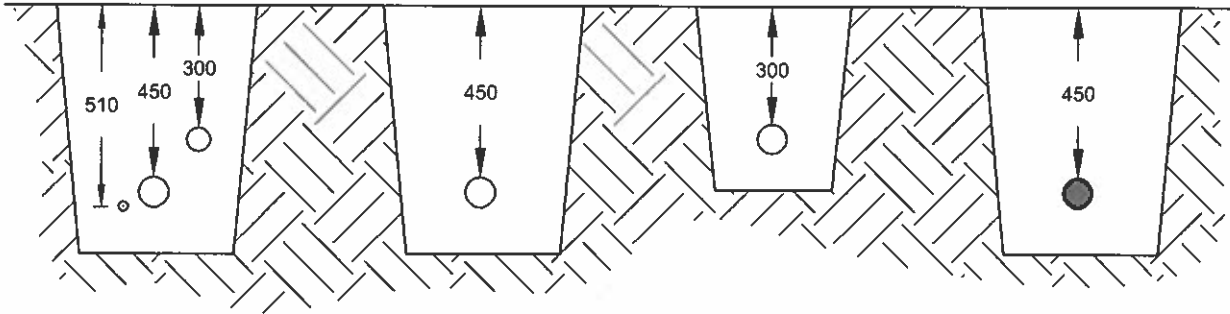
**PROFILE VIEW**

MAINLINE, LATERAL  
AND WIRING IN THE  
SAME TRENCH

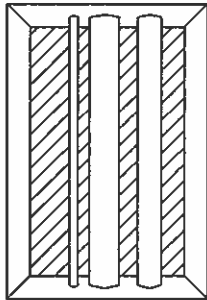
MAINLINE PIPE

LATERAL PIPE

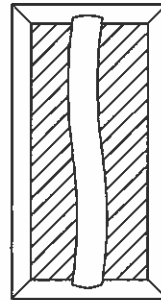
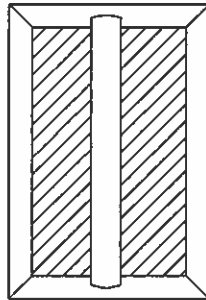
WIRING IN  
CONDUIT



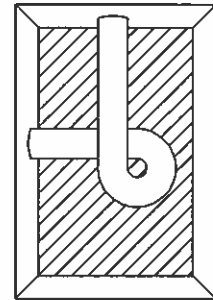
**PLAN VIEW**



RUN WIRING BENEATH  
AND BESIDE MAINLINE,  
TAPE AND BUNDLE AT  
3.0m INTERVALS.



ADD SOLVENT  
WELDED PLASTIC  
PIPING TO BE SNAKED  
IN TRENCH AS SHOWN.



TIE A 600mm LOOP IN  
ALL WIRING AT  
CHANGES OF DIRECTION  
OF 30 DEGREES OR  
GREATER. UNTIE AFTER  
ALL CONNECTIONS HAVE  
BEEN MADE

1. SLEEVE BELOW ALL HARD-SCAPE ELEMENTS WITH CLASS 200 PVC TWICE THE DIAMETER OF THE PIPE OR WIRE BUNDLE WITHIN.
2. DO NOT SCALE THIS DRAWING.

**APPROVED**

DATE *June 11/15...*

*JMLW...*

DIRECTOR OF ENGINEERING

*The City of*  
**BARRIE**  
STANDARD DETAIL

**PIPE WIRE TRENCHING  
FOR IRRIGATION**

REV No. DATE: JUNE 2015

1

SCALE: N.T.S.

**BSD-1285**