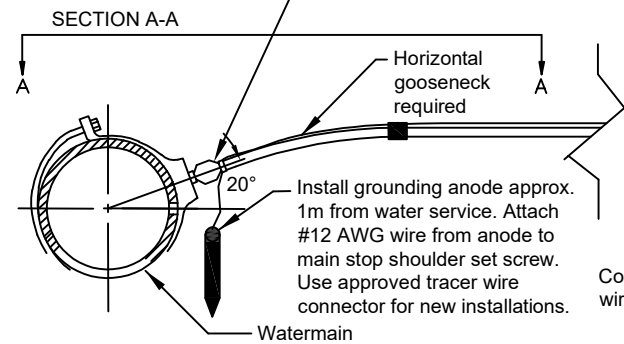
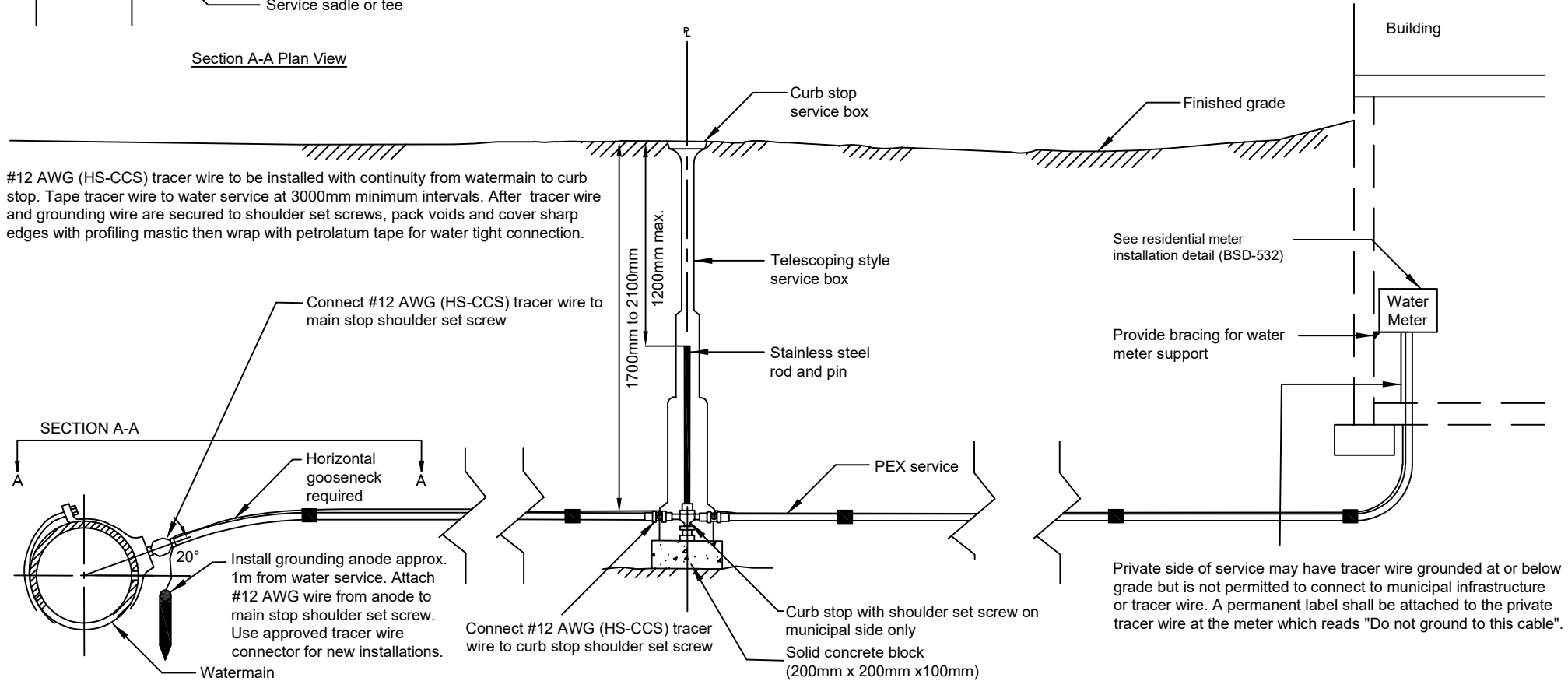


Section A-A Plan View

Notes:

1. To be interpreted in conjunction with the current Water Transmission and Distribution Policies and Design Guidelines and the Approved Manufacturers Products for Linear Water Systems list.
2. Water service unions will not be permitted unless approved by the Director.
3. Cross-linked polyethylene (PEX) water services will not be permitted in soils contaminated with hydrocarbons, chemicals or other possible hazards.
4. Any retrofit of a property utilizing City of Barrie water services as grounding potential must be outfitted with ground rods/plates as per current electrical safety code, standards and requirements and shall be inspected by the E.S.A. as part of the PEX standard.

#12 AWG (HS-CCS) tracer wire to be installed with continuity from watermain to curb stop. Tape tracer wire to water service at 3000mm minimum intervals. After tracer wire and grounding wire are secured to shoulder set screws, pack voids and cover sharp edges with profiling mastic then wrap with petrolatum tape for water tight connection.



Connect #12 AWG (HS-CCS) tracer wire to curb stop shoulder set screw

Curb stop with shoulder set screw on municipal side only  
Solid concrete block (200mm x 200mm x 100mm)

Private side of service may have tracer wire grounded at or below grade but is not permitted to connect to municipal infrastructure or tracer wire. A permanent label shall be attached to the private tracer wire at the meter which reads "Do not ground to this cable".



# 25mm to 50mm Cross-linked Polyethylene Water Service

REV No.	DATE: April 2019
<b>2</b>	SCALE: N.T.S.

**BSD-504**