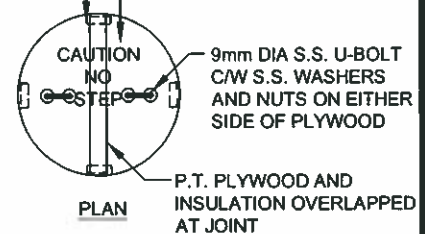
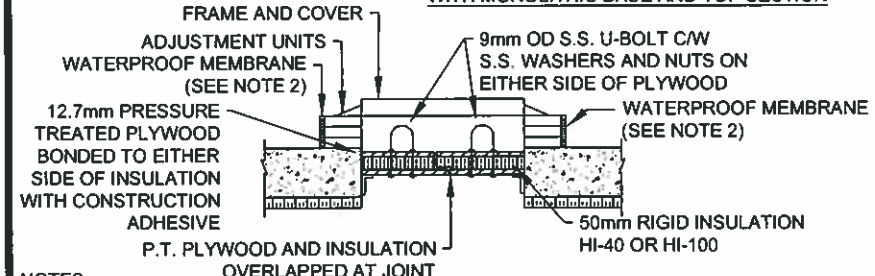


TYPICAL PRECAST MAINTENANCE HOLE WITH MONOLITHIC BASE AND TOP SECTION



- NOTES:**
1. APPLICATION: NON-PRESSURE REDUCING VALVE CHAMBERS ONLY
 2. WATERPROOF MEMBRANE TO EXTEND COMPLETELY AROUND ALL RISER SECTION JOINTS WITH A MINIMUM 300mm WIDE STRIP.
 3. ALL INSULATION TO BE RIGID TYPE EXTRUDED POLYSTYRENE FOAM DOW HI-40 OR HI-100. ALL CHAMBERS INSULATION TO BE INSTALLED WITH CONSTRUCTION ADHESIVE AND TAPCON ANCHORS AT MAX. 600mm SPACING IN ALL DIRECTIONS (MIN. 2 ANCHORS PER SHEET OF INSULATION).
 4. SUMP c/w GRATE TO BE LOCATED AT THE BOTTOM OF THE ACCESS LADDER. SUMP SHALL NOT EXTEND THROUGH THE BOTTOM OF BASE.

APPROVED
 DATE *Oct. 28/17*
R. Sten
 DIRECTOR OF ENGINEERING



TYPICAL TWO PIECE CIRCULAR CHAMBER DETAILS FOR WATERMAIN

REV No.	DATE: OCT 2017
2	SCALE: N.T.S.
BSD-524	