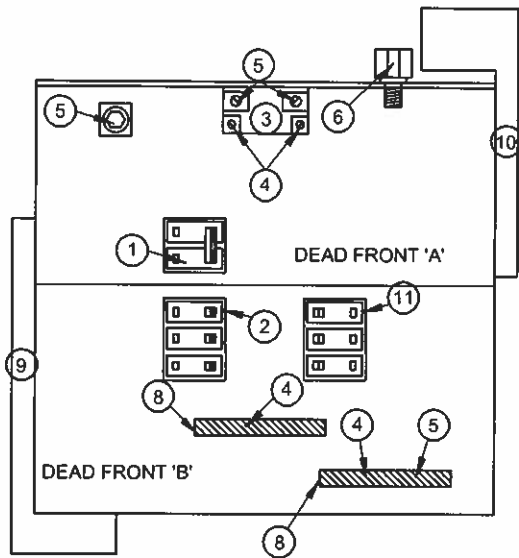
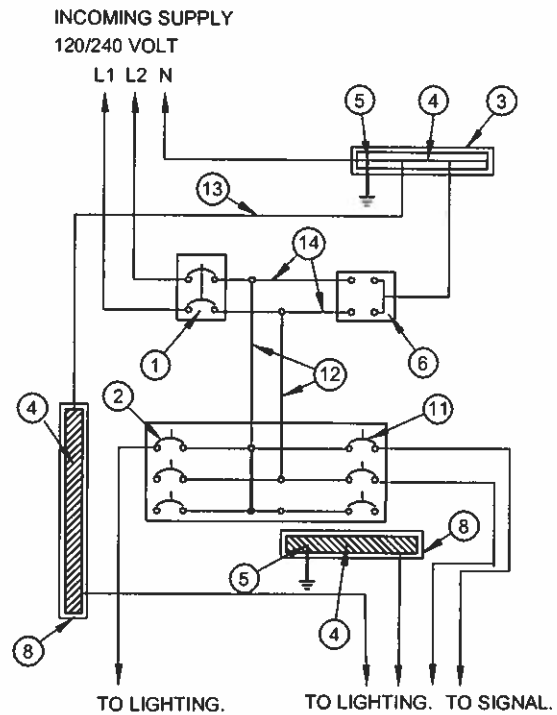


### EQUIPMENT LAYOUT



### SCHEMATIC WIRING DIAGRAM



### ELECTRICAL EQUIPMENT LIST

- ① MAIN CIRCUIT BREAKER, 240V, 100A, 2-POLE.
- ② BRANCH CIRCUIT BREAKERS, 120/240V, 35A, 1-POLE.
- ③ SOLID NEUTRAL ASSEMBLY, 100A MIN. AMPACITY.
- ④ GROUND LUG FOR #6 AWG STRANDED COPPER GROUND WIRE.
- ⑤ GROUND LUG FOR #2/0 AWG STRANDED COPPER GROUND WIRE.
- ⑥ SECONDARY LIGHTNING ARRESTER, 650V, 2-POLE.
- ⑦ DRIP SHIELD.
- ⑧ LOCATE SECONDARY NEUTRAL AND GROUND BARS ACCORDING TO CSA AND PROJECT REQUIREMENTS.
- ⑨ PRIMARY BARRIER.
- ⑩ SECONDARY BARRIER.
- ⑪ BRANCH BREAKER, 240V, 60A, 1 POLE.

- ⑫ COPPER BUS BAR.
- ⑬ #6 AWG RWU90 WIRE.
- ⑭ #12 AWG RWU90 WIRE.

- +— DENOTES TERMINAL CONNECTION.
- DENOTES #6 AWG RWU90 WIRE.
- DENOTES #12 AWG RWU90 WIRE.
- DENOTES FIELD WIRING (SIZES ARE INDICATED ELSEWHERE ON THE CONTRACT DRAWINGS).
- DENOTES GROUND LINK.

**APPROVED**  
 DATE: *JUL 4, 2015*  
  
 DIRECTOR OF ENGINEERING

*City of*  
**BARRIE**  
 STANDARD DETAIL

**LS3M SUPPLY CONTROL  
 CABINET ASSEMBLY TYPE 3M  
 120/240V, 100A, 1-PHASE, 3-WIRE**

REV No. **1**      DATE: MAY 2015  
 SCALE: N.T.S.

**BSD-811**