

LUMINAIRE SPECIFICATIONS

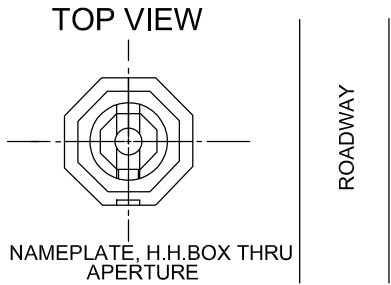
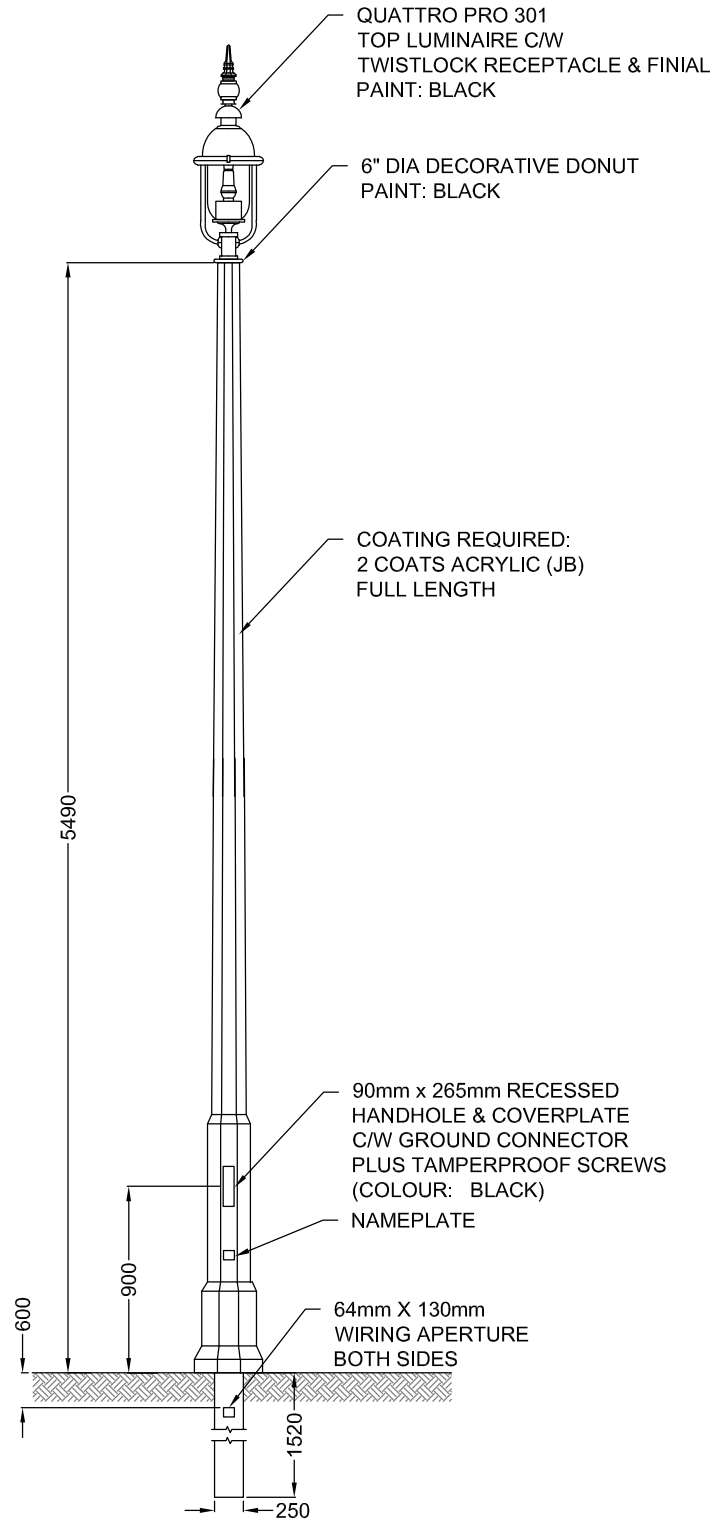
MOUNTING METHOD: POST TOP
 OPTICAL SYSTEM: GLOBE BRUSHED FINISH (GPB)
 IES CLASSIFICATION: TYPE III
 LIGHT SOURCE: LED
 LINE VOLTAGE: 120V
 PAINT: BLACK
 OPTIONS: #5 FINAL C/W TWISTLOCK RECEPTACLE AND DECORATIVE CAP (PHOTO CELL BY OTHERS)

OPTIONS:

QUICK DISCONNECT
 TERMINAL BLOCK
 OTHERS -

POLE SPECIFICATIONS:

SECTION: OCTAGONAL
 COLOUR: BLACK ECLIPSE
 FINISH: POLISHED
 POLE TOP: 5 1/8" FL/FL
 POLE BUTT: 9 1/4" DIA
 POLE LENGTH: 3'-0"
 APPROX. WEIGHT: 1,150 lbs
 OPTIONS: CONSULT WITH MANUFACTURER FOR OPTION OF DUPLEX GFI RECEPTACLE



NOTE;
 ALL DIMENSIONS ARE IN MILLIMETERS UNLESS OTHERWISE SHOWN

 STANDARD DETAIL	DECORATIVE CONCRETE PEDESTRIAN POLE, DIRECT BURIED (5.49M)	REV No. 2	DATE: MAY 2020
		SCALE: N.T.S.	
		BSD-826	