



STANDARD DETAIL

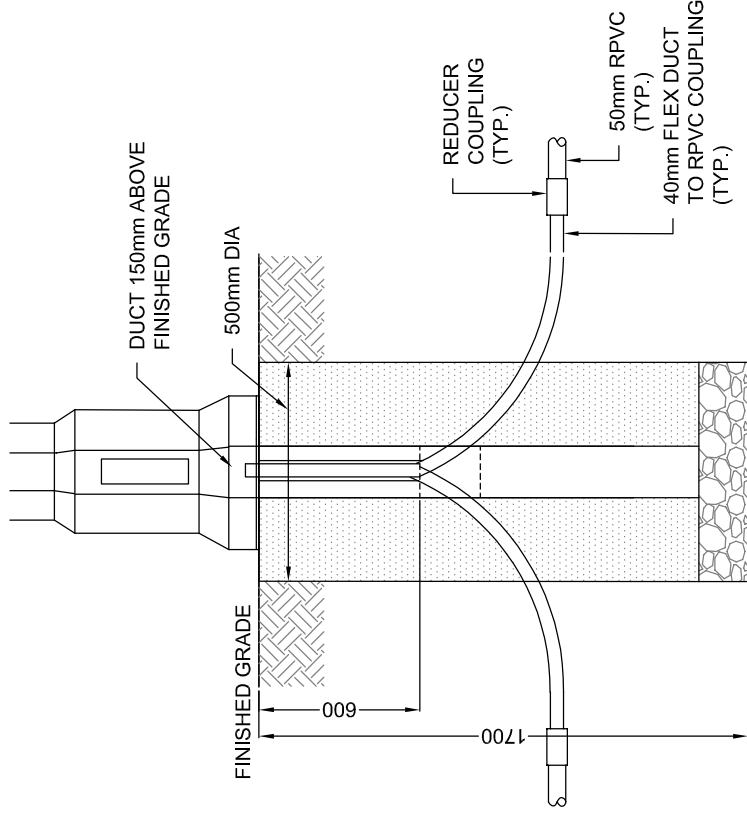
DECORATIVE CONCRETE PEDESTRIAN POLE, DIRECT BURIED (5.49M)

REV No. DATE: MAY 2020

2

SCALE: N.T.S.

BSD-827



50 RIGID P.V.C. DUCT
(C.S.A. C22.2 NO.211.2)

KCH18 CLASSIC
HIGHWAYMAN SPUN
CONCRETE POLE OR
CA230 CAMBRIDGE
CONCRETE POLE

90mm x 265mm RECESSED
HANDHOLE & COVERPLATE
C/W GROUND CONNECTOR
PLUS TAMPERPROOF SCREWS
NAMEPLATE

NOTES:

1. TO BE USED IN CONJUNCTION WITH BSD-826
2. ALL DIMENSIONS ARE IN MILLIMETERS UNLESS OTHERWISE SHOWN
3. HOLE TO BE AUGURED OR "HYDRO VAC"
4. FOUNDATION OF GRANULAR 'A' COMPACTED TO 95% SPMDD
5. SET POLE ENSURING BASE OF POLE IS AT FINISHED GRADE
6. BACKFILL AND TAMP BOTTOM 450mm BEFORE FINAL PLUMBING OF POLE THEN CONTINUE TO BACKFILL
7. USE NON-SHRINK MATERIAL FOR BACKFILL FOR TAMPING EVERY 300mm UP TO THE LEVEL OF EXISTING UNDERBASE

