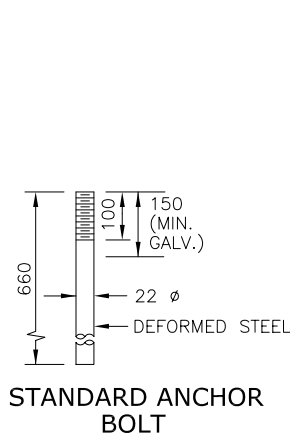
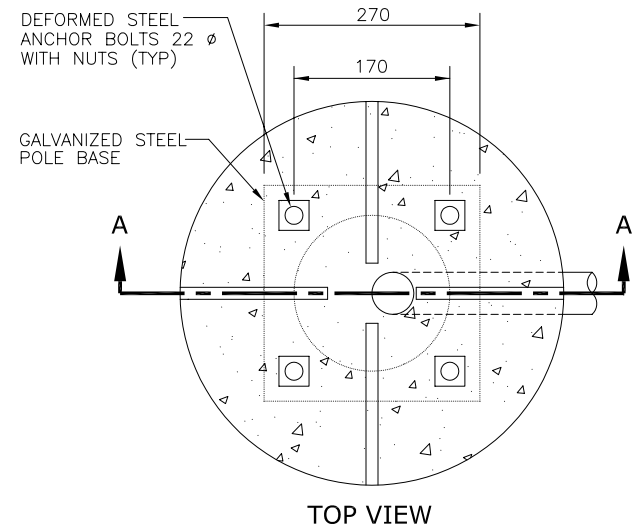


SECTION A - A



STANDARD ANCHOR BOLT



TOP VIEW

NOTES:

1. ALL DIMENSIONS ARE IN MILLIMETRES UNLESS OTHERWISE SHOWN.
2. THE CONTRACTOR SHALL VERIFY THE BOLT PATTERN WITH POWCO STEEL
3. ANCHOR BOLTS ARE INTERMEDIATE GRADE STEEL, MIN. LOAD 14,250 kg C.S.A. G.30.1

CITY OF BARRIE STANDARD

**460mm Dia. POLE BASE  
TO FIT 3.7m POWCO STEEL POLE**

APR'D:	S.R.A.	DATE:	JULY 2002
DRAWN:	S.ROSE	SCALE:	N.T.S.

NO.	REVISION	APR'D	DATE

**BSD  
TS-1A**