

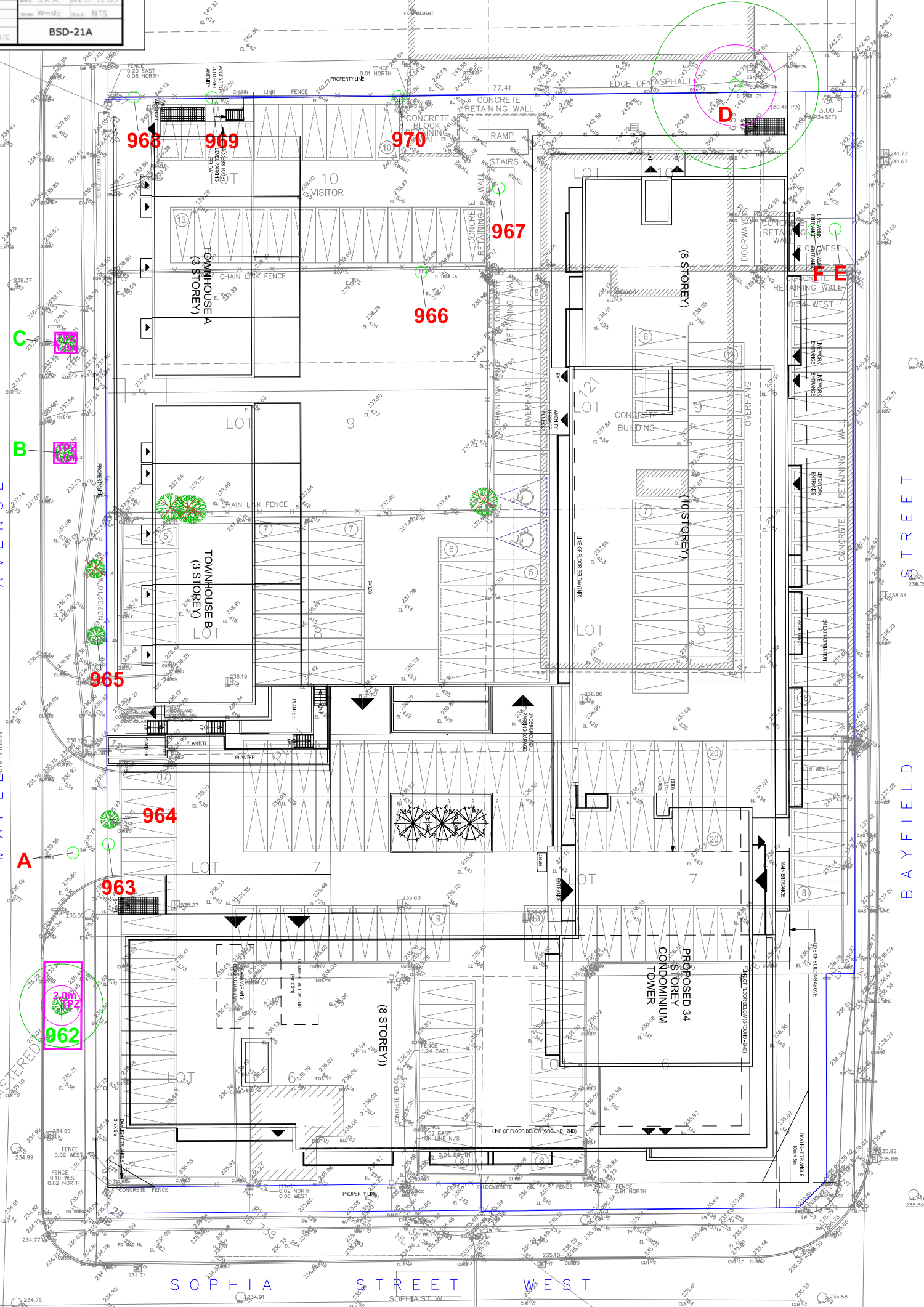
NOTICE OF TREE REMOVALS

All vegetation removal work shall occur in accordance with By-law 2005-120.

Owner: Name of Owner
 Removals completed by: Name of person or company retained to work on the vegetation removal on the land.
 For Further Information, please contact: Address and telephone number of a person action on behalf of the owner from whom further information on the proposed vegetation removal work may be obtained.

TREE PRESERVATION AREA

NO UNAUTHORIZED TREE CUTTING PERMITTED IN THIS AREA



LEGEND

- Tree Label: X
- Minimum Tree Preservation Zone, with radius (m) from edge of tree: xm
- Tree location estimated by KFCI: o
- Dripline: o
- Tree Label (RED) removal required: X
- Tree Protection Fence Location (Thick Magenta): —
- Tree has been removed: X

Tree Inventory
 Refer to Table 1 for complete tree inventory information. All tree resources 15 cm in diameter and larger located on and within 6 metres of the subject property and trees of all sizes within the road right-of-way were included in the inventory.

Tree Removals
 The removal of 12 trees will be required to accommodate the proposed development. Proposed tree removals are indicated with RED labels.

Tree Preservation
 Preservation of all remaining trees will be possible with appropriate tree protection measures. Trees identified for preservation are indicated with GREEN labels. Minimum Tree Preservation Zones and required Tree Preservation Fencing are indicated in MAGENTA. TPZ circles represents minimum distances for construction and grading near trees. Refer to Tree Protection Plan Notes for preservation details.

KUNTZ FORESTRY CONSULTING Inc.
 146 Lakeshore Road West
 PO Box 1267 Lakeshore W PO
 Oakville ON L6K 0B3
 t: 289.637.1871 f: 866.693.6390
 e: consult@kuntzforestry.ca
 web: www.kuntzforestry.ca

Client: **Mark Setter Associates Ltd.**
 219 Lake Drive East
 Keswick, ON L4P 3E9

Property: **136 Bayfield Street
 Barrie, ON**

Tree Inventory and Preservation Plan

Issue	Issue/Revisions	Date	By
1	Report Submission	24 Feb. 2020	CB

Base Data: CDN Land Surveyors Inc. (topo), Onespace Unlimited Inc. (site plan)

Project	P2287	Figure	1
Date	24 February 2020		
Scale	1:500		