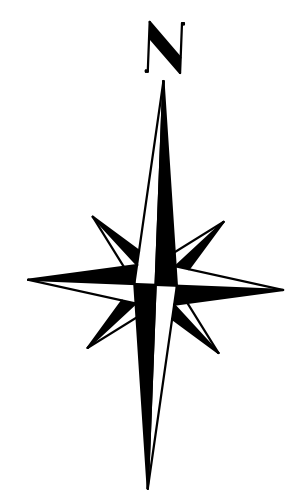


**METRIC**  
 DISTANCES AND COORDINATES SHOWN ON THIS PLAN ARE IN METRES, AND CAN BE CONVERTED TO FEET BY DIVIDING BY 0.3048.



**TOPOGRAPHIC SURVEY  
 OF PART OF  
 MARKET BLOCK  
 REGISTERED PLAN 2  
 CITY OF BARRIE  
 COUNTY OF SIMCOE**

SCALE 1:200

© C.A. MACDONALD SURVEYING INC. 2015.

**SURVEYOR'S CERTIFICATE**

I CERTIFY THAT:  
 (1) THIS SURVEY AND PLAN ARE CORRECT AND IN ACCORDANCE WITH THE SURVEYS ACT AND THE SURVEYORS ACT AND THE REGULATIONS MADE UNDER THEM.  
 (2) THE SURVEY WAS COMPLETED ON JUNE 4, 2015.

JUNE 9, 2015 C.A. MacDONALD  
 BARRIE, ONTARIO ONTARIO LAND SURVEYOR

**LEGEND**

- DENOTES SURVEY MONUMENT FOUND
- SURVEY MONUMENT SET
- S.I.B. " STANDARD IRON BAR
- I.B. " IRON BAR
- S.S.I.B. " SHORT STANDARD IRON BAR
- C.P. " CONCRETE PIN
- C.C. " CUT CROSS
- P.I.N. " PROPERTY IDENTIFICATION NUMBER (1849)
- O.L.S. " C.A. MACDONALD O.L.S.
- O.U. " ORIGIN UNKNOWN
- P.1 " PLAN OF SURVEY BY J. DIAMOND O.L.S., DATED JULY 27, 1965.
- P.2 " PLAN OF SURVEY BY R. WELSMAN O.L.S., DATED FEBRUARY 12, 1965.
- P.3 " PLAN 51R-10642
- P.4 " PLAN 51R-39531
- PM " PARKING METER
- LS " LIGHT STANDARD
- MH " MANHOLE
- CB " CATCH BASIN
- UP " UTILITY POLE
- OHW " OVER HEAD WIRES
- GM " GAS METER
- ANC " ANCHOR
- CLF " CHAIN LINK FENCE
- WV " WATER VALVE
- F.F.L. " FINISHED FLOOR
- ☉ " DECIDUOUS TREE

**DISTANCE NOTE:**  
 DISTANCES SHOWN ON THIS PLAN ARE GROUND DISTANCES AND CAN BE CONVERTED TO GRID DISTANCES BY MULTIPLYING BY A COMBINED SCALE FACTOR OF 0.999699.

**BEARING NOTE:**  
 BEARINGS ARE UTM GRID BEARINGS AND ARE REFERRED TO THE CENTRAL MERIDIAN ZONE 17 (NAD 83) (81°W) AND ARE DERIVED FROM OBSERVATIONS ON CITY OF BARRIE HORIZONTAL CONTROL MONUMENTS 03120040004 AND 00119673109.

**OBSERVED REFERENCE POINTS:**  
 UTM ZONE 17, NAD83 (ORIGINAL)  
 COORDINATES TO URBAN ACCURACY PER SEC.14(2) OF O.REG. 216/10

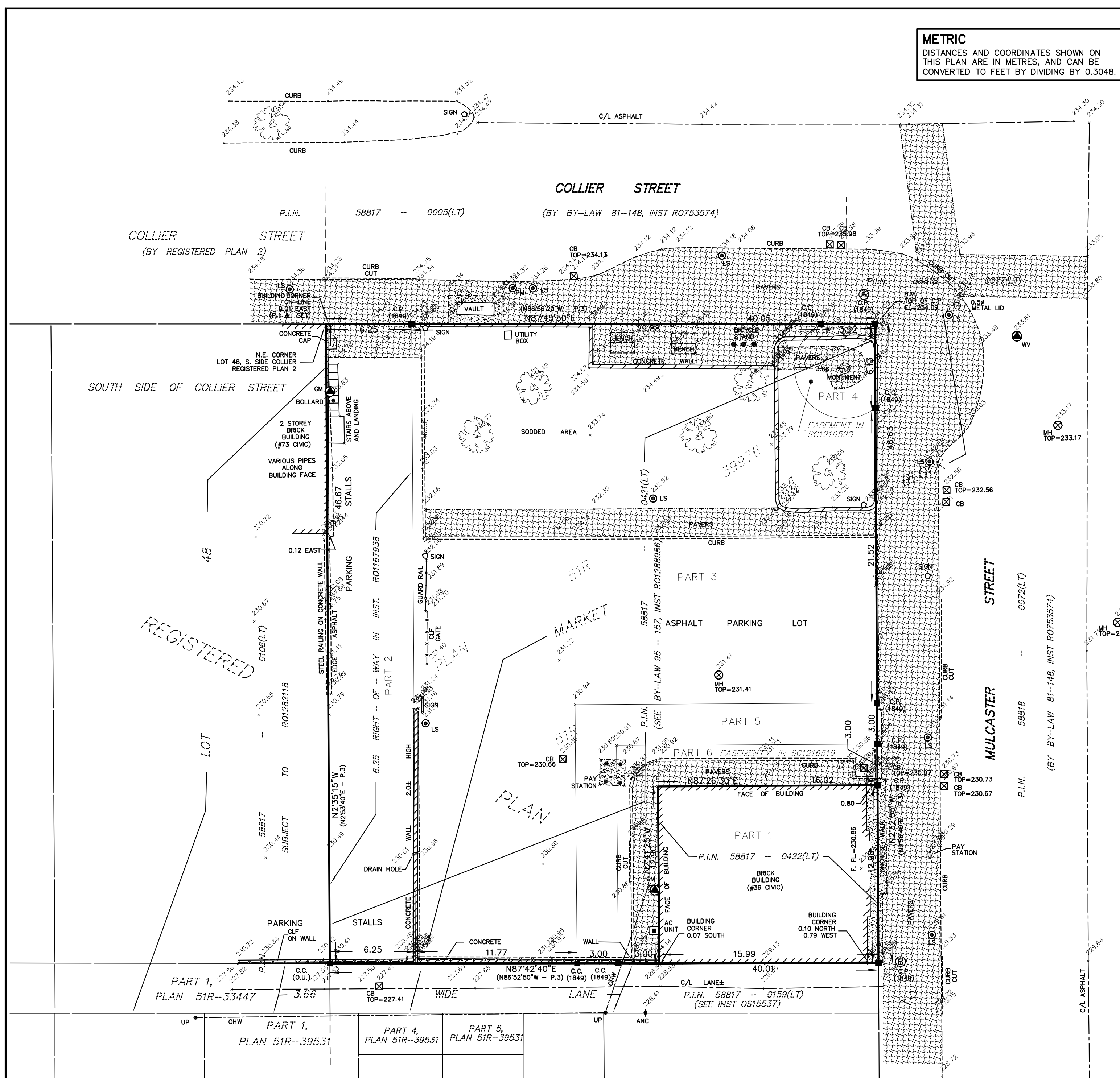
STATION	NORTHING	EASTING
ORP A	4916065.92	604682.25
ORP B	4916019.35	604684.33

COORDINATES CANNOT, IN THEMSELVES, BE USED TO RE-ESTABLISH CORNERS OR BOUNDARIES SHOWN ON THIS PLAN.

**ELEVATION NOTES:**

ELEVATIONS ARE GEODETIC AND ARE DERIVED FROM GPS OBSERVATIONS AND ARE RELATED TO MNR CONTROL MONUMENT 00119673109.  
 BRASS TABLET SET FLUSH WITH CONCRETE ON THE GOVERNMENT WHARF AT END OF BAYFIELD STREET, BARRIE. HAVING AN ELEVATION OF 220.21 (CGVD-1928-1978)

LOCAL BENCHMARK - TOP OF C.P. AT N.E. CORNER OF PART 4, PLAN 51R-39976  
 ELEVATION = 234.09



**C.A. MacDONALD SURVEYING Inc.**  
 204 Blake Street, Barrie, ON L4M 1K3  
 TEL (705) 730-6893 FAX (705) 730-0653

PROJECT: 15-2275  
 CAD FILE : C:\SURVEYS\REG\PLAN\RP2\MARKETBLOCK\15-2275\RP2MKBLK-15-2275.DWG

**ASSOCIATION OF ONTARIO  
 LAND SURVEYORS**  
 PLAN SUBMISSION FORM  
 1939550

THIS PLAN IS NOT VALID UNLESS IT IS AN EMBOSSED ORIGINAL COPY ISSUED BY THE SURVEYOR  
 In accordance with Regulation 1026, Section 29(3).