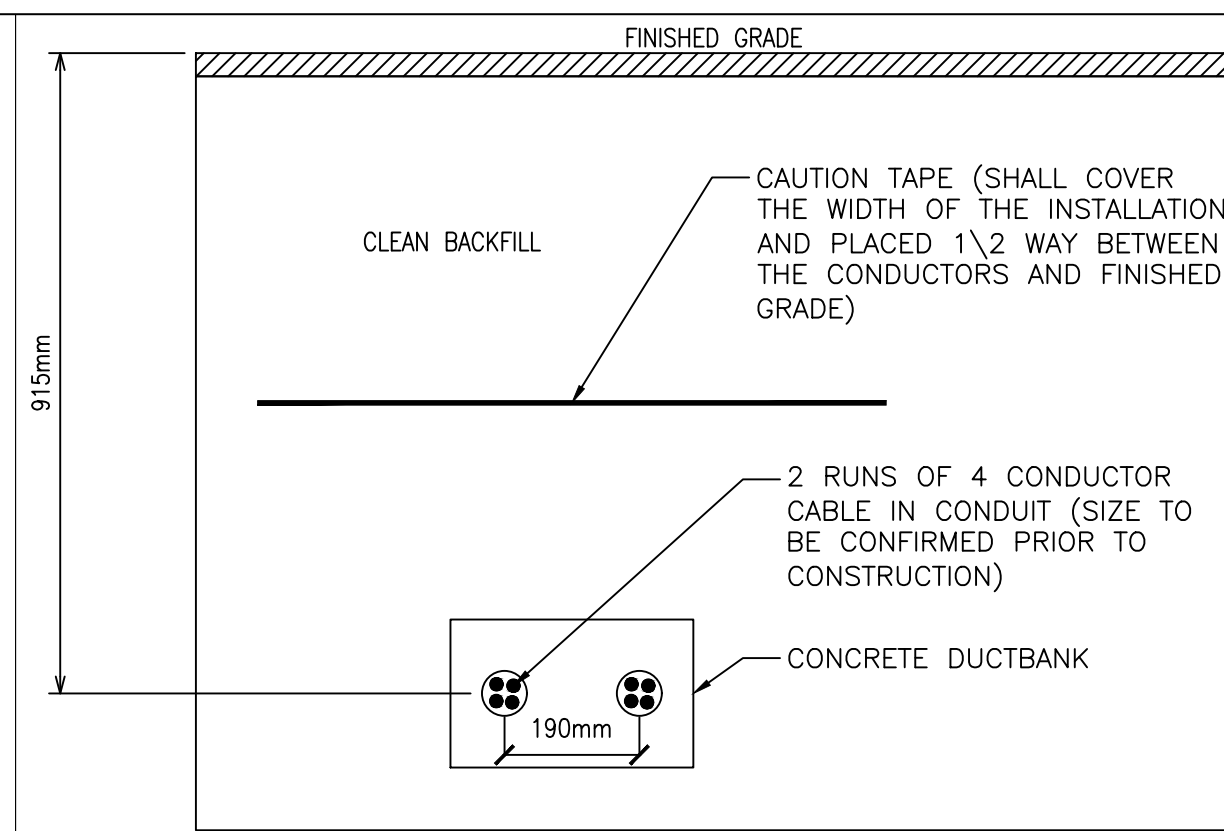
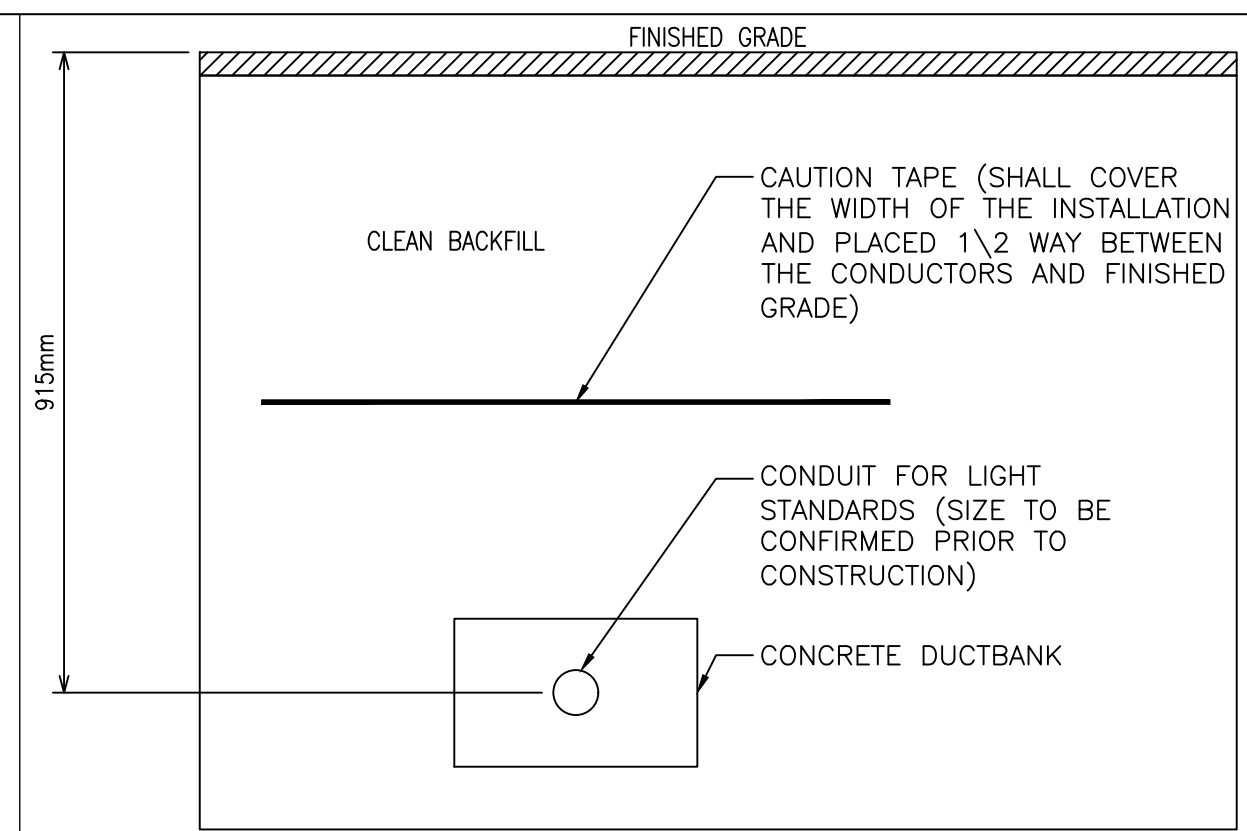


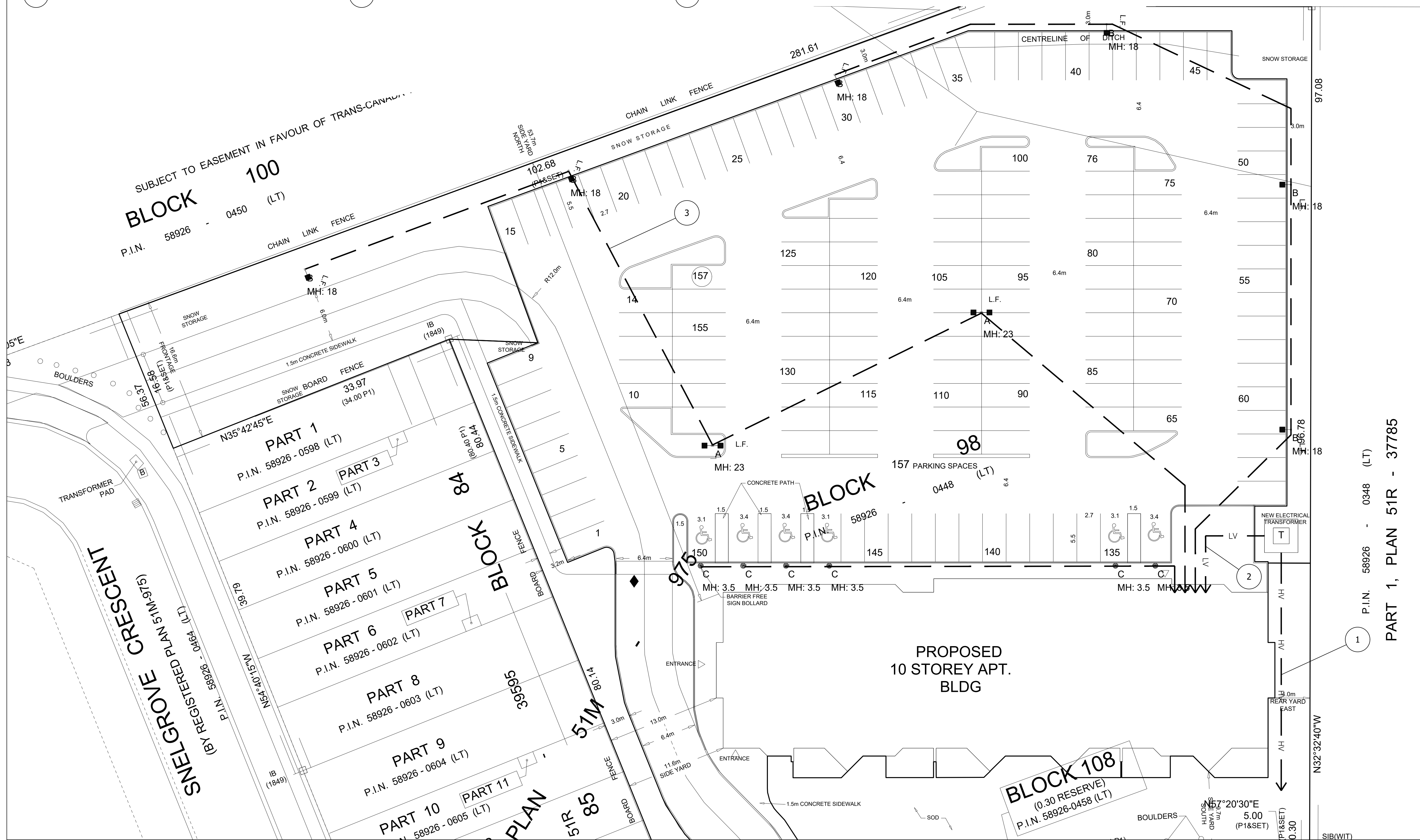
1 HV TRENCH DETAIL (TYP.)



2 LV TRENCH DETAIL (TYP.)



3 LIGHTING (DRIVE AISLE) TRENCH DETAIL (TYP.)



LOT 18, CONCESSION 5

Hubbert EME Engineering
67 High Street, Barrie, ON, L4N 1W5

HUBBERT EME ENGINEERING
ELECTRICAL MECHANICAL ENERGY

LICENSED PROFESSIONAL ENGINEER
C. J. LANGFORD
100114456
2017/06/27
PROVINCE OF ONTARIO

Drafted by: J.Goss	Date: 03/10/2017
Design by: J.Goss	Date: 03/10/2017
Checked by: C.Langford	Date: 03/10/2017

No.	Revision/Issue	Date
1	ISSUED FOR SITE PLAN APPROVAL	03/10/17
2	ISSUED FOR SITE PLAN APPROVAL	06/22/17
3	ISSUED FOR SITE PLAN APPROVAL	06/27/17

Project title/info
30 HANMER STREET WEST
BARRIE, ON
EME PROJ. #7-5055B

Drawing Title
SITE PLAN

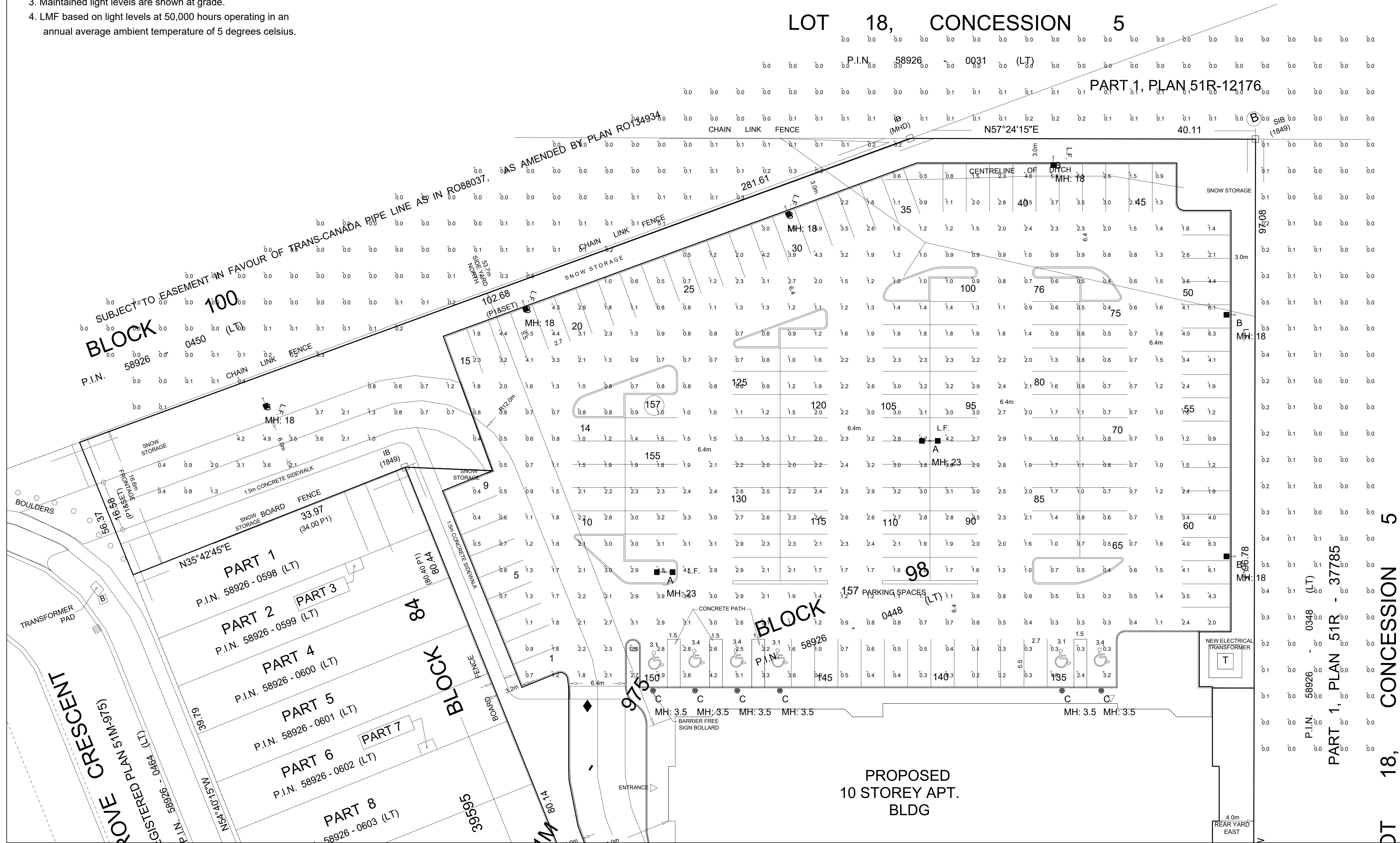
Project Name 30 HANMER	Drawing # E01
Date 03/10/2017	
Scale NTS	

Symbol	Qty	Label	Arrangement	Lumens	LLF	Description	Watts
■	2	A	BACK-BACK	16897	0.960	OSQ-A-xx-5SH-K-40K (OSQ Series, Type V Short, Input K, 4000K)	130
□	6	B	SINGLE	9019	0.930	OSQ-A-xx-3ME-B-40K w OSQ-BLSMF (OSQ Series, Type III Medium_BLS, Input B, 4000K)	86
○	6	C	SINGLE	1381	0.980	PWY-EDG-5M-_-02-D-UL-350-40K (EDGE Bollards, Type V Medium, 350mA, 4000K)	22

Label	CalcType	Units	Avg	Max	Min	Avg/Min	Max/Min
Parking Area	Illuminance	Fc	1.84	6.3	0.2	9.20	31.50
Spill Light	Illuminance	Fc	0.06	0.6	0.0	N.A.	N.A.

NOTES:

1. See drawing for mounting height.
2. Calculation points are set on a 10' x 10' grid.
3. Maintained light levels are shown at grade.
4. LMF based on light levels at 50,000 hours operating in an annual average ambient temperature of 5 degrees celsius.



LOT 18, CONCESSION 5

PART 1, PLAN 51R-12176

Hubbert EME Engineering
67 High Street, Barrie, ON, L4N 1W5

HUBBERT EME ENGINEERING
ELECTRICAL MECHANICAL ENERGY



Drafted by: J.Goss	Date: 03/10/2017
Design by: J.Goss	Date: 03/10/2017
Checked by: C.Langford	Date: 03/10/2017

No.	Revision/Issue	Date
1	ISSUED FOR SITE PLAN APPROVAL	03/10/17
2	ISSUED FOR SITE PLAN APPROVAL	06/22/17
3	ISSUED FOR SITE PLAN APPROVAL	06/27/17

Project title/info
30 HANMER STREET WEST
BARRIE, ON
EME PROJ. #7-5055B

Drawing Title
SITE PHOTOMETRIC

Project Name 30 HANMER	Drawing # E02
Date 03/10/2017	
Scale NTS	

LOT 18, CONCESSION 5