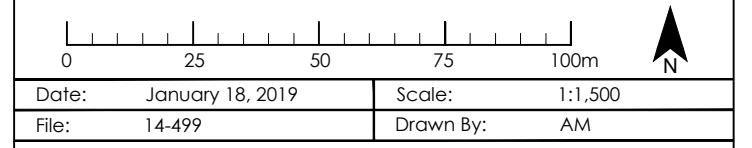


**LEGEND**

- Potential Medium/High Density Residential**
- Potential Vehicular Connections**
- Existing Watercourse**
- 14.0m M.T.O. Setback**

Source: City of Barrie Open Data. Concept plan prepared by IPS Consulting Inc, dated July 2018.  
 Note: This drawing is for discussion purposes only. Potential development includes lands currently held by the municipality.



**CONCEPTUAL BLOCK PLAN**  
 113 EDGEHILL DRIVE

**IPS** INNOVATIVE PLANNING SOLUTIONS  
 PLANNERS • PROJECT MANAGERS • LAND DEVELOPERS  
 150 DUNLOP STREET EAST, SUITE 201, BARRIE, ONTARIO L4M 1B1  
 tel: 705 • 812 • 3281 fax: 705 • 812 • 3438 e: info@ipsconsultinginc.com www.ipsconsultinginc.com