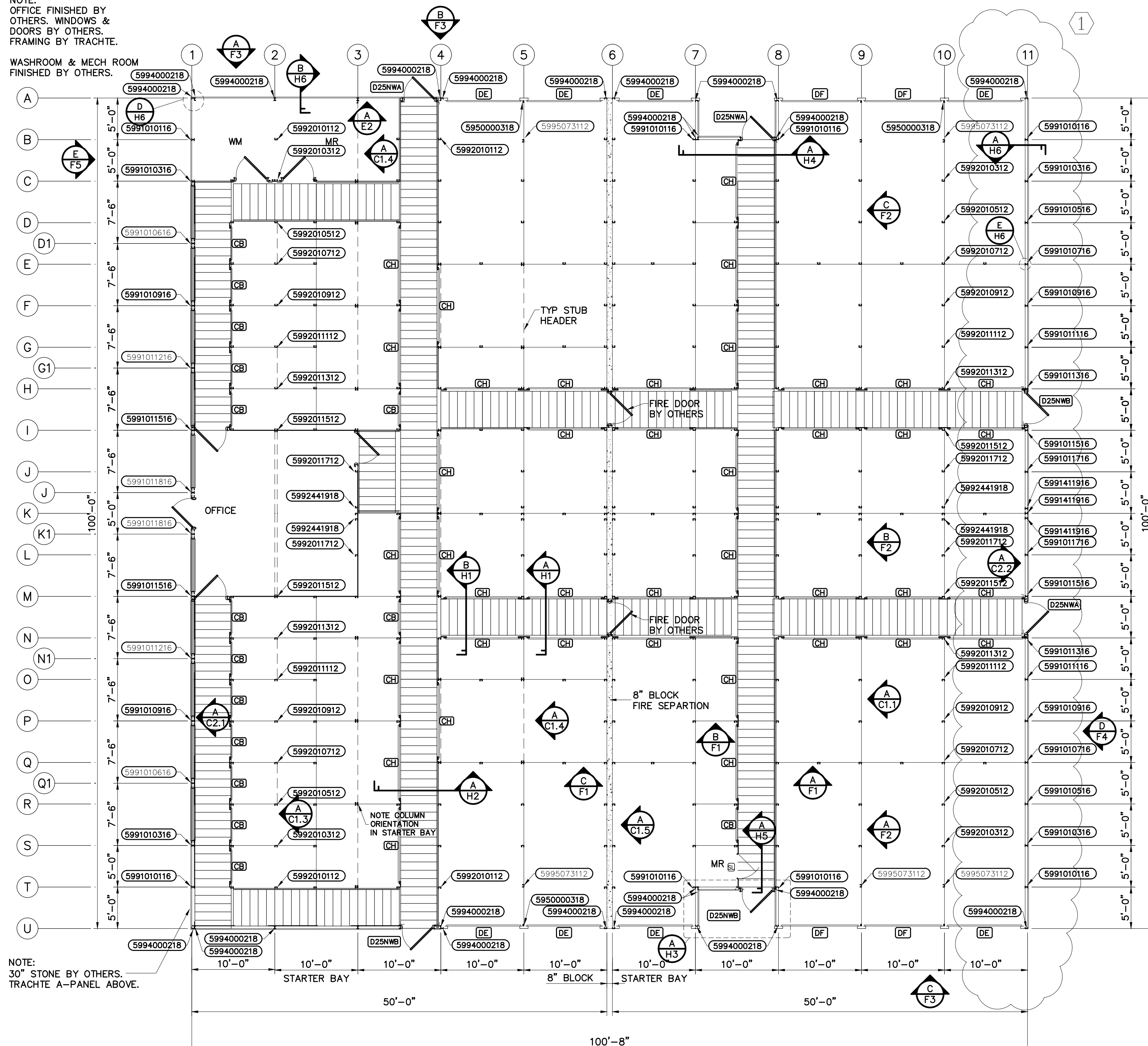


NOTE:  
OFFICE FINISHED BY OTHERS.  
OTHERS: WINDOWS &  
DOORS BY OTHERS.  
FRAMING BY TRACHTE.

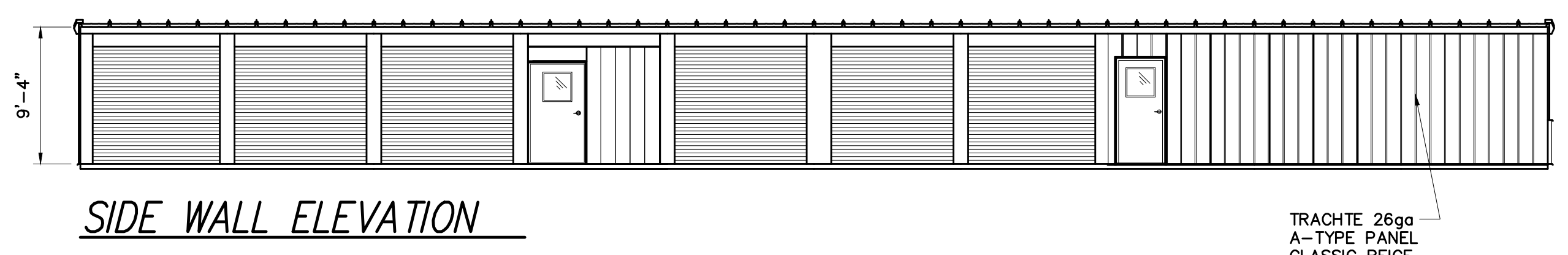
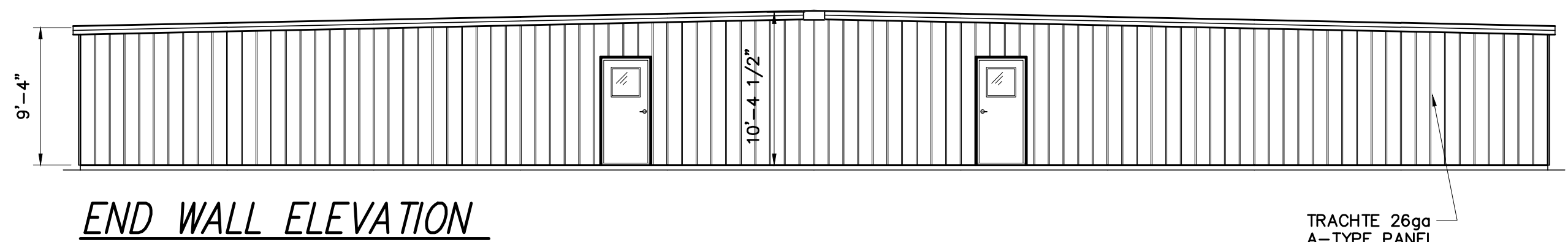
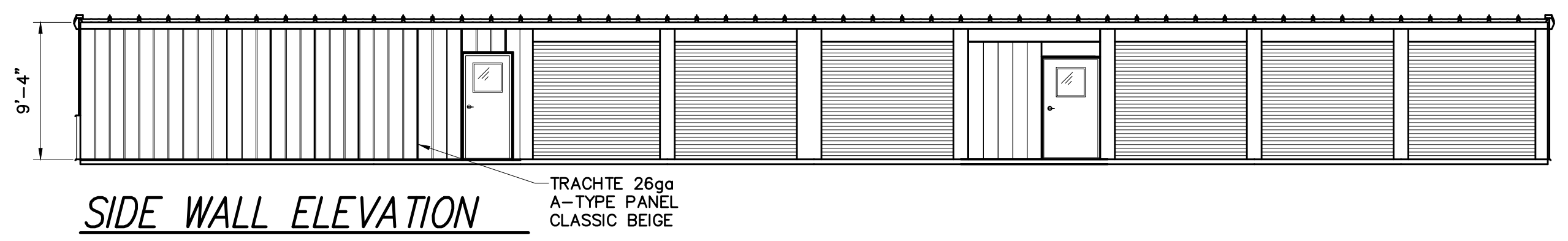
WASHROOM & MECH ROOM  
FINISHED BY OTHERS.



NOTE:  
30\"/>

FLOOR PLAN FOR 9'-4" EAVE, 1/4:12 PITCH, MINI STORAGE BUILDING "A"  
PP-45359 SO#199328

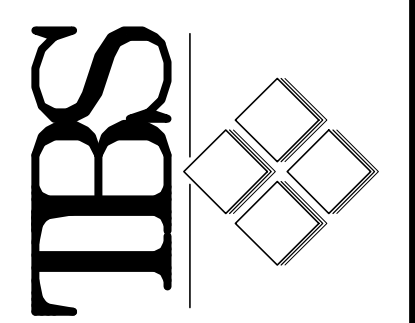
ROLL-UP DOORS MEET ASTM E330		DOOR SCHEDULE		PDL DOORS - PRIMER COAT ONLY			
QTY	CODE	TYPE	SIZE	ROUGH OPENING (REF.)	MANUF.	DESCRIPTION	COLOR
15	CB	ROLL-UP	3'-8" x 7'-0"	3'-8" x 7'-0"	TRAC-RITE/eq.	CORRIDOR ROLL-UP DOOR	BRIGHT WHITE
40	CH	ROLL-UP	8'-8" x 7'-0"	8'-8" x 7'-0"	TRAC-RITE/eq.	CORRIDOR ROLL-UP DOOR	BRIGHT WHITE
3	D25NWA	SWING A	3'-8" x 6'-8"	4'-0" x 7'-0"	PDL/equiv	DOOR, LEVER/PANIC, 30x30 LITE	White
3	D25NWB	SWING B	3'-8" x 6'-8"	4'-0" x 7'-0"	PDL/equiv	DOOR, LEVER/PANIC, 30x30 LITE	White
8	DE	ROLL-UP	8'-8" x 7'-0"	8'-8" x 7'-0"	TRAC-RITE/eq.	INSULATED ROLL-UP DOOR	EVERGREEN
4	DF	ROLL-UP	9'-0" x 7'-0"	9'-0" x 7'-0"	TRAC-RITE/eq.	INSULATED ROLL-UP DOOR	EVERGREEN
1	SL	SWING	3'-0" x 7'-0"	3'-0" x 7'-0"	TRACHTE	FLUSH PANEL LOUVERED SWING DOOR	White



REVISION	By	Date
#1 REMOVE BLOCK ENDWALL	RLJ	5/9/18



TRACHTE BUILDING SYSTEMS, Inc.  
This drawing and all parts thereof  
is the exclusive property of  
Trachte Building Systems, Inc.  
314 Wilburn Road, Sun Prairie, Wisconsin  
(800) 256-5924 (Local 608/837-7899)  
and may not be reproduced in whole  
or part without written permission.



FRED KESAK  
ALL SEASONS STORAGE  
29 FERDALE DRIVE N  
BARRIE, ON  
FLOOR PLAN & ELEVATIONS BLDG "A"

Date: 3/19/18  
Drawn by: ALG  
Scale: 1/8" = 1'-0"  
Plan No.: 41602 D  
Order No.:  
Sheet No.: