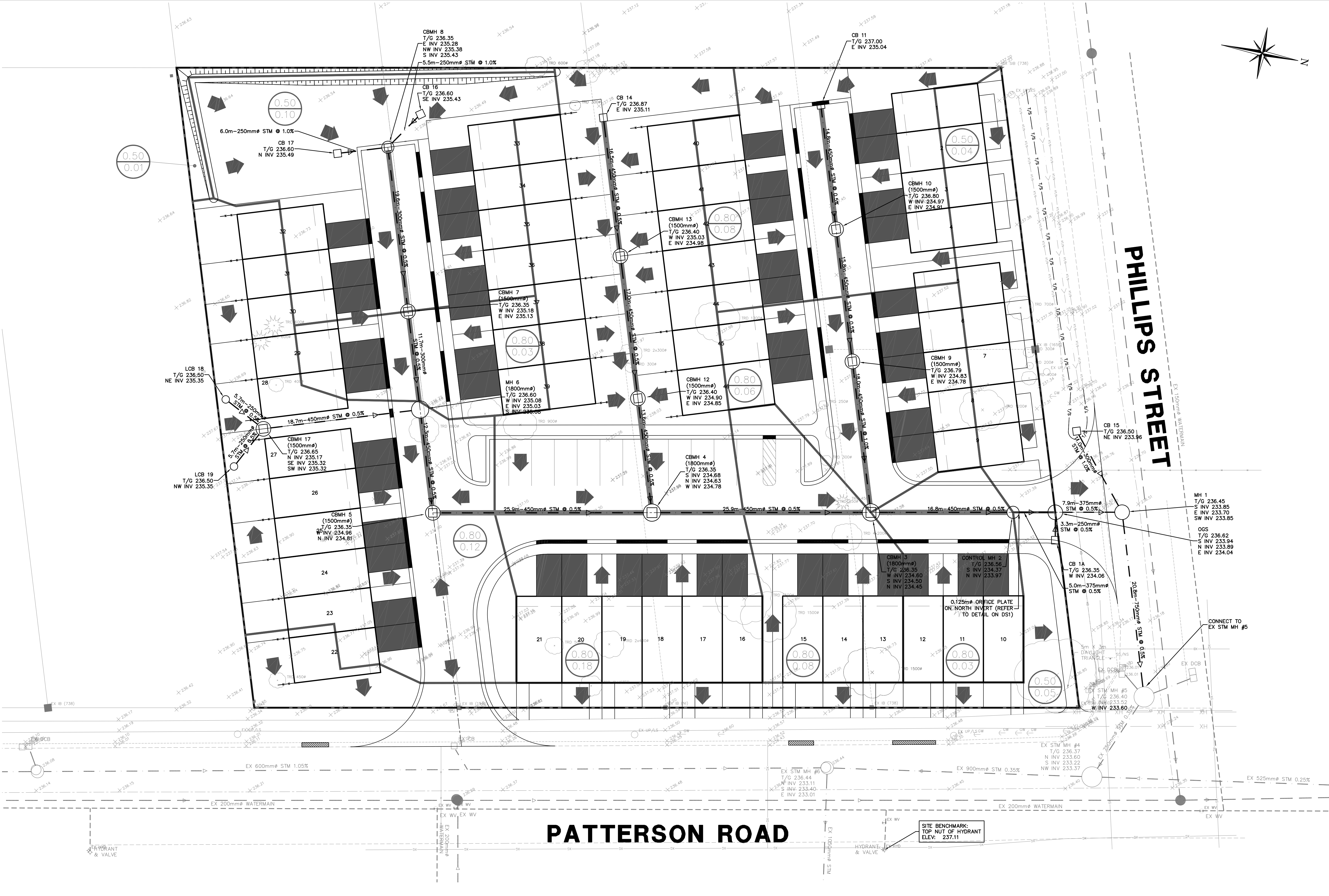


- Legend:**
- EXISTING FEATURES (EX)**
- EX SIB EX STD IRON BAR
 - EX IB EX IRON BAR
 - EX MAILBOX EX MAILBOX
 - EX UP EX UTILITY POLE
 - EX BELL PED EX BELL PED
 - EX HYDRO TRANSFORMER EX HYDRO TRANSFORMER
 - EX WS EX WATER SERVICE
 - EX HYD EX FIRE HYD.
 - EX WV EX WATER VALVE
 - EX ST NAME SIGN EX ST NAME SIGN
 - EX STOP SIGN EX STOP SIGN
 - EX ELEVATION EX ELEVATION
 - EX FENCE EX FENCE
 - EX U/G GASMAIN EX U/G GASMAIN
 - EX U/G BELL EX U/G BELL
 - EX O/H HYDRO EX O/H HYDRO
 - EX 00mm² WATERMAIN EX WATERMAIN & VALVE
 - EX 00mm² SAN @ 0.0% EX SAN SEWER & MH
 - EX 00mm² STM @ 0.0% EX STM SEWER & MH

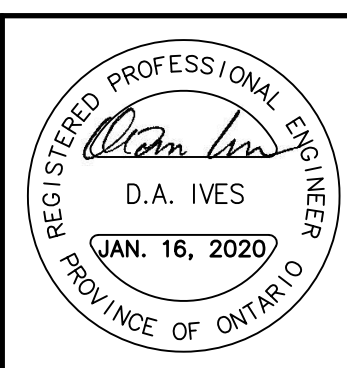
- PROPOSED FEATURES (PR)**
- PR STREET NAME SIGN
 - PR STOP SIGN
 - PR SILT FENCE
 - PR STREET LIGHT
 - PR WATER SERVICE
 - PR SAN SERVICE
 - PR STM SERVICE
 - PR HYDRO TRANSFORMER
 - PR WATERMAIN
 - PR FIRE HYDRANT
 - PR WATER VALVE
 - PR SAN SEWER
 - PR SANITARY MANHOLE
 - PR STM SEWER
 - PR CATCHBASIN MANHOLE
 - PR MANHOLE
 - PR CATCHBASIN
 - PR LANDSCAPE CATCHBASIN
 - PR ELEVATION
 - PR MATCH EXISTING ELEVATION (INTERPOLATED)
 - PR SLOPE
 - PR SWALE
 - PR DEPRESSED CURB
 - PR LINEAR LID STORM SEWER
 - PR FIRE BREAK LINE
 - CATCHMENT RUNOFF COEFFICIENT
 - CATCHMENT AREA (HA)
 - LIMITS OF CATCHMENT AREA
 - FLOW DIRECTION



Notes:

- Unless noted otherwise, the measurements and distances shown on this drawing are shown in meters.
- Do not scale drawings.
- It is the contractor's responsibility to verify all dimensions, levels and datums on site and report any discrepancies or omissions to WMI & Associates Ltd. prior to construction.
- This drawing is to be read and understood in conjunction with all other relevant documents applicable to this project.
- This drawing is the exclusive property of WMI & Associates Ltd. and the reproduction of any part of this document without prior written consent is strictly prohibited.

Benchmark: 237.11m
Top nut of hydrant located between #46 and #48 Patterson Road on the east side of Patterson Road.



No.	Issue / Revision	Date
1	1ST SUBMISSION	July 12, 2019
2	2ND SUBMISSION	OCT. 22, 2019
3	3ND SUBMISSION	JAN. 16, 2020

46-56 PATTERSON ROAD
STORMWATER DRAINAGE AREA PLAN

Client:
Farrage Developments Inc.
185 Goulding Avenue
Toronto, Ontario
M2R 2P3

CAUTION
CONTRACTOR TO DETERMINE LOCATION OF EXISTING UTILITIES PRIOR TO CONSTRUCTION.

wmi
WMI & Associates Limited
119 Collier Street
Barrie, Ontario
L4M 1H5
Ph 705-797-2027
www.wmiengineering.ca

Drawn By: JA
Checked By: DAI
Scale: 1:200
Project No.: 17-428
Drawing No.: STM