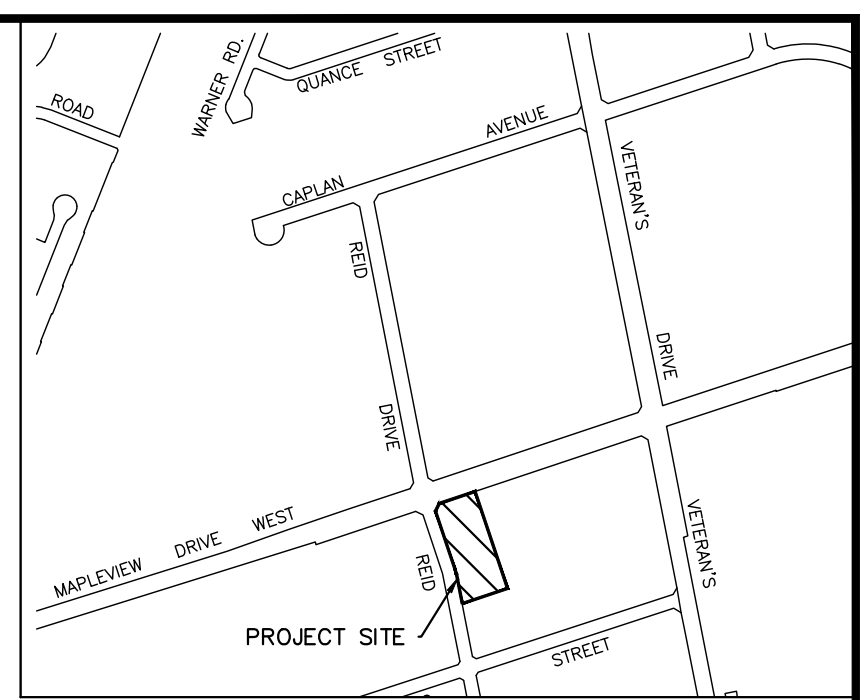
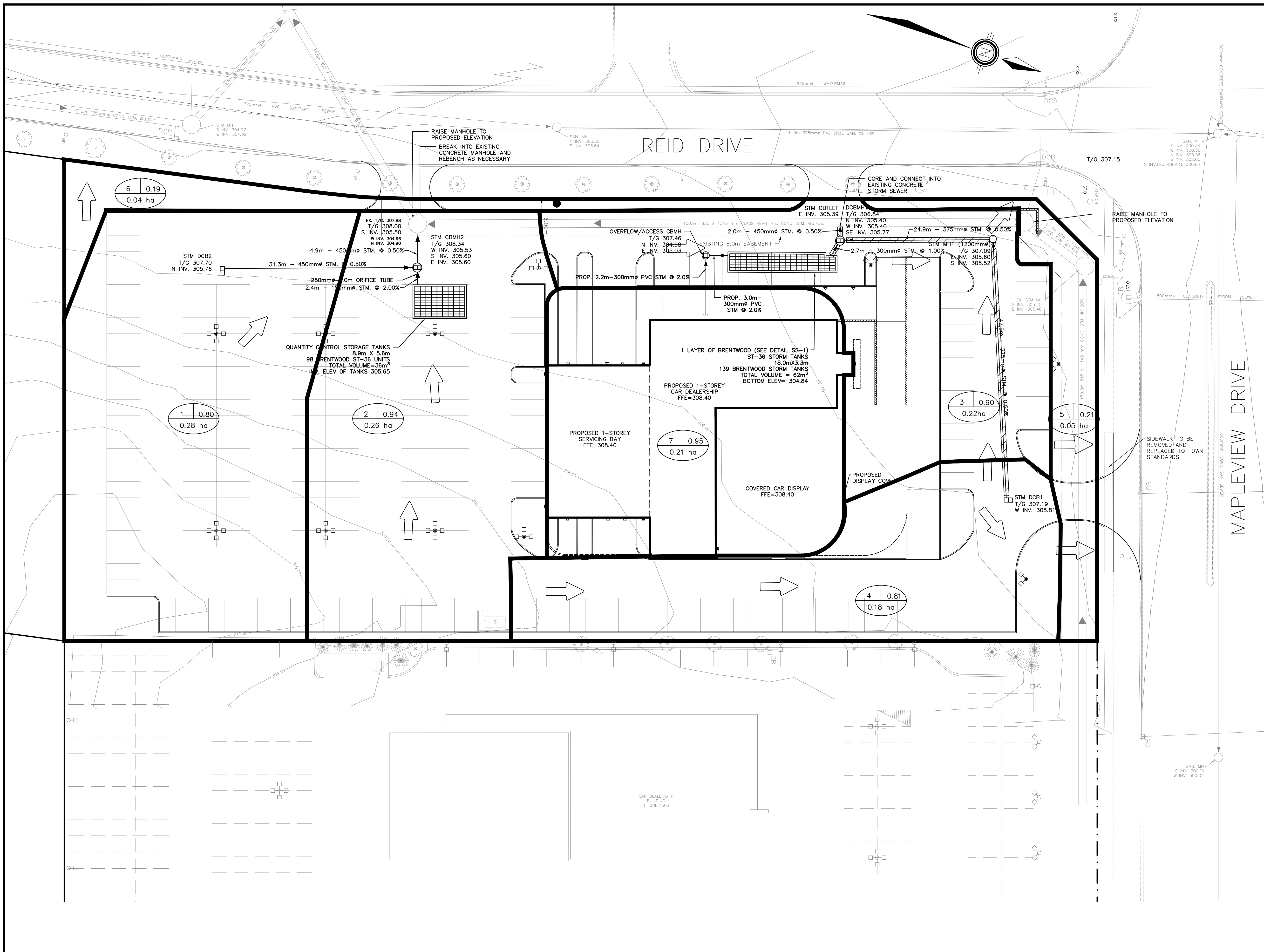


P:\Projects\Mapview\Folders\18009 - ISM, Cadillac, Mapview Dr - Barrie\Engineering\18009 - BASE.dwg Layout:STM-2 Plotter Nov 05, 2016 @ 8:46pm by ZZonabell @ PEARSON ENGINEERING LTD.

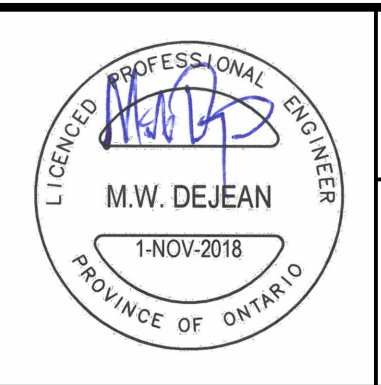


**LEGEND**

- CB CATCH BASIN
- DCB DOUBLE CATCH BASIN
- CBMH CATCH BASIN
- MH STORM MANHOLE
- SMH SANITARY MANHOLE
- SERVICE CAP
- ◆ HYD. FIRE HYDRANT
- ⊙ VB WATER VALVE
- ⊙ CS CURB STOP W/ SERVICE
- × 254.63 PROPOSED ELEVATION
- 254.09 EXISTING ELEVATION
- 1.5% PROPOSED DIRECTION AND GRADE
- BACK OF CURB
- EDGE OF PAVEMENT
- CURB CUT LOCATION
- ) ( HIGH POINT
- ▨ PROPOSED RETAINING WALL
- ➔ OVERLAND FLOW DIRECTION
- 1 0.75 ALLOWABLE RUNOFF COEFFICIENT
- 1.00 ha AREA IN HECTARES

NO.	REVISION NOTE	DATE	BY

**BENCHMARK:**  
 SITE BENCHMARK IS THE TOP OF THE IB AT THE NORTHEAST CORNER OF LOT 4, REGISTERED PLAN 51M-695, HAVING AN ELEVATION OF 306.87  
**ELEVATION NOTE:**  
 ELEVATION ARE GEODETIC IN ORIGIN AND WERE DERIVED FROM OBSERVED REFERENCE POINTS (ORP) USING THE LEICA SMARTNET NETWORK (2002 EPOCH) AND ARE REFERRED TO THE CGVD-1928:1978 DATUM.  
**BEARING NOTE:**  
 BEARINGS ARE UTM GRID, DERIVED FROM OBSERVED REFERENCE POINTS A TO B, BY REAL TIME NETWORK (RTN) OBSERVATIONS, UTM ZONE 17, NAD83 (CSRS) (2002 EPOCH) AND ARE REFERRED TO PART OF THE EAST LIMIT OF REID DRIVE, AS SHOWN ON REGISTERED PLAN 51M-695, HAVING A BEARING OF N11°01'00"W.



**CADILLAC DEALERSHIP  
 MAPLEVIEW DRIVE AND REID DRIVE  
 BARRIE, ON**

**POST-DEVELOPMENT  
 CATCHMENT PLAN**

**PEARSON ENGINEERING LTD.**  
 PEARSONENG.COM PH. 705.719.4785

DESIGNED BY	ZZ/MWD	HORIZ SCALE	1:300	PROJECT #	18009
DRAWN BY	ZZ	VERT SCALE	N/A	DRAWING #	STM-2
CHECKED BY	GMP	DATE	OCTOBER 2018	REVISION #	0