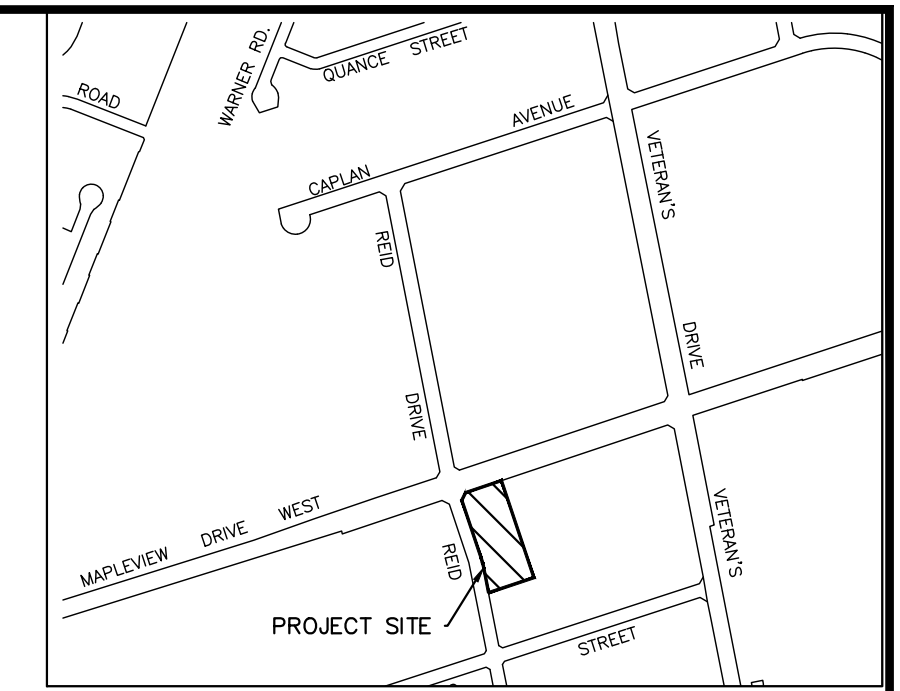
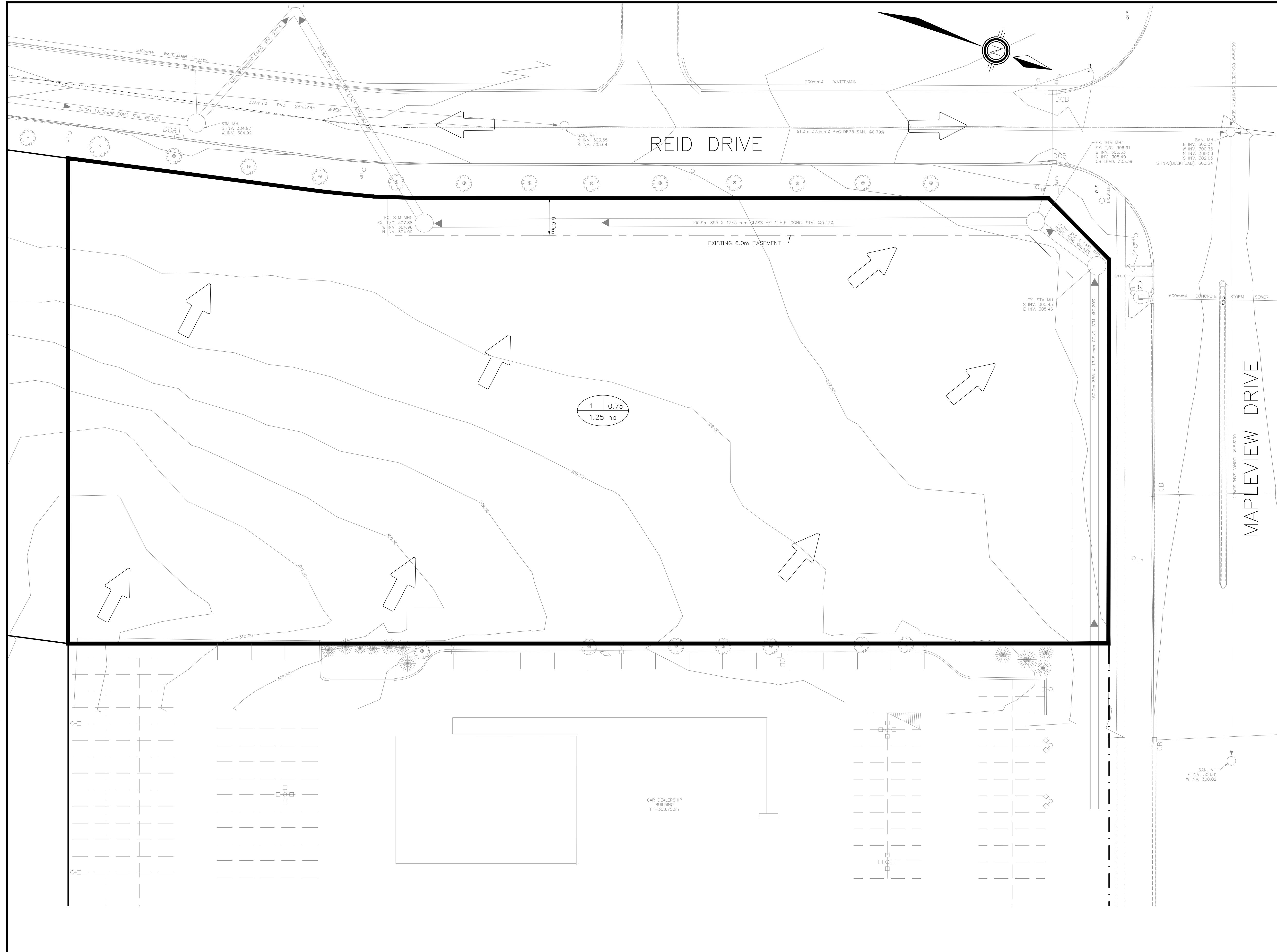


P:\AutoCAD\Working\Folders\18009 - ISM, Cadillac, Mapleview Dr - Barrie\Engineering\18009 - BASE.dwg Layout:STM-1 Plotted Nov 05, 2018 @ 8:45am by ZZandbelt @ PEARSON ENGINEERING LTD.



- KEY MAP**
NTS
- LEGEND**
- CB CATCH BASIN
 - DCB DOUBLE CATCH BASIN
 - CBMH CATCH BASIN
 - MH STORM MANHOLE
 - MH SANITARY MANHOLE
 - SERVICE CAP
 - ◆ HYD. FIRE HYDRANT
 - ▲ VB WATER VALVE
 - CS CURB STOP W/ SERVICE
 - × 254.63 PROPOSED ELEVATION
 - 254.09 EXISTING ELEVATION
 - 1.5% PROPOSED DIRECTION AND GRADE
 - BACK OF CURB
 - EDGE OF PAVEMENT
 - CURB CUT LOCATION
 -)(HIGH POINT
 - ▨ PROPOSED RETAINING WALL
 - ➔ OVERLAND FLOW DIRECTION
 - CATCHMENT AREA 1 0.75 ALLOWABLE RUNOFF COEFFICIENT
 - 1.00 AREA IN HECTARES

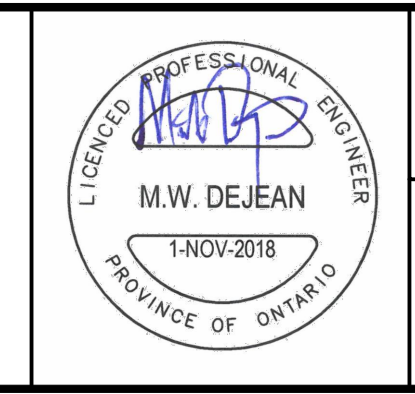
REFER TO RICHARDSON FOSTER LTD. STORM DRAINAGE PLAN FOR MAPLEVIEW INDUSTRIAL DEVELOPMENTS INC. DRAWING 9120-STM REV3 DATED FEB 28 2008 FOR INDUSTRIAL SUBDIVISION CATCHMENT AREAS

NO.	REVISION NOTE	DATE	BY

BENCHMARK:
SITE BENCHMARK IS THE TOP OF THE IB AT THE NORTHEAST CORNER OF LOT 4, REGISTERED PLAN 51M-695, HAVING AN ELEVATION OF 306.87

ELEVATION NOTE:
ELEVATION ARE GEODETIC IN ORIGIN AND WERE DERIVED FROM OBSERVED REFERENCE POINTS (ORP) USING THE LEICA SMARTNET NETWORK (2002 EPOCH) AND ARE REFERRED TO THE CGVD-1928:1978 DATUM.

BEARING NOTE:
BEARINGS ARE UTM GRID, DERIVED FROM OBSERVED REFERENCE POINTS A TO B, BY REAL TIME NETWORK (RTN) OBSERVATIONS, UTM ZONE 17, NAD83 (CSRS) (2002 EPOCH) AND ARE REFERRED TO PART OF THE EAST LIMIT OF REID DRIVE, AS SHOWN ON REGISTERED PLAN 51M-695, HAVING A BEARING OF N11°01'00"W.



**CADILLAC DEALERSHIP
MAPLEVIEW DRIVE AND REID DRIVE
BARRIE, ON**

**PRE-DEVELOPMENT
STORM CATCHMENT PLAN**

PEARSON ENGINEERING LTD.
PEARSONENG.COM PH. 705.719.4785

DESIGNED BY	ZZ/MWD	HORIZ SCALE	1:300	PROJECT #	18009
DRAWN BY	ZZ	VERT SCALE	N/A	DRAWING #	STM-1
CHECKED BY	GMP	DATE	OCTOBER 2018	REVISION #	0