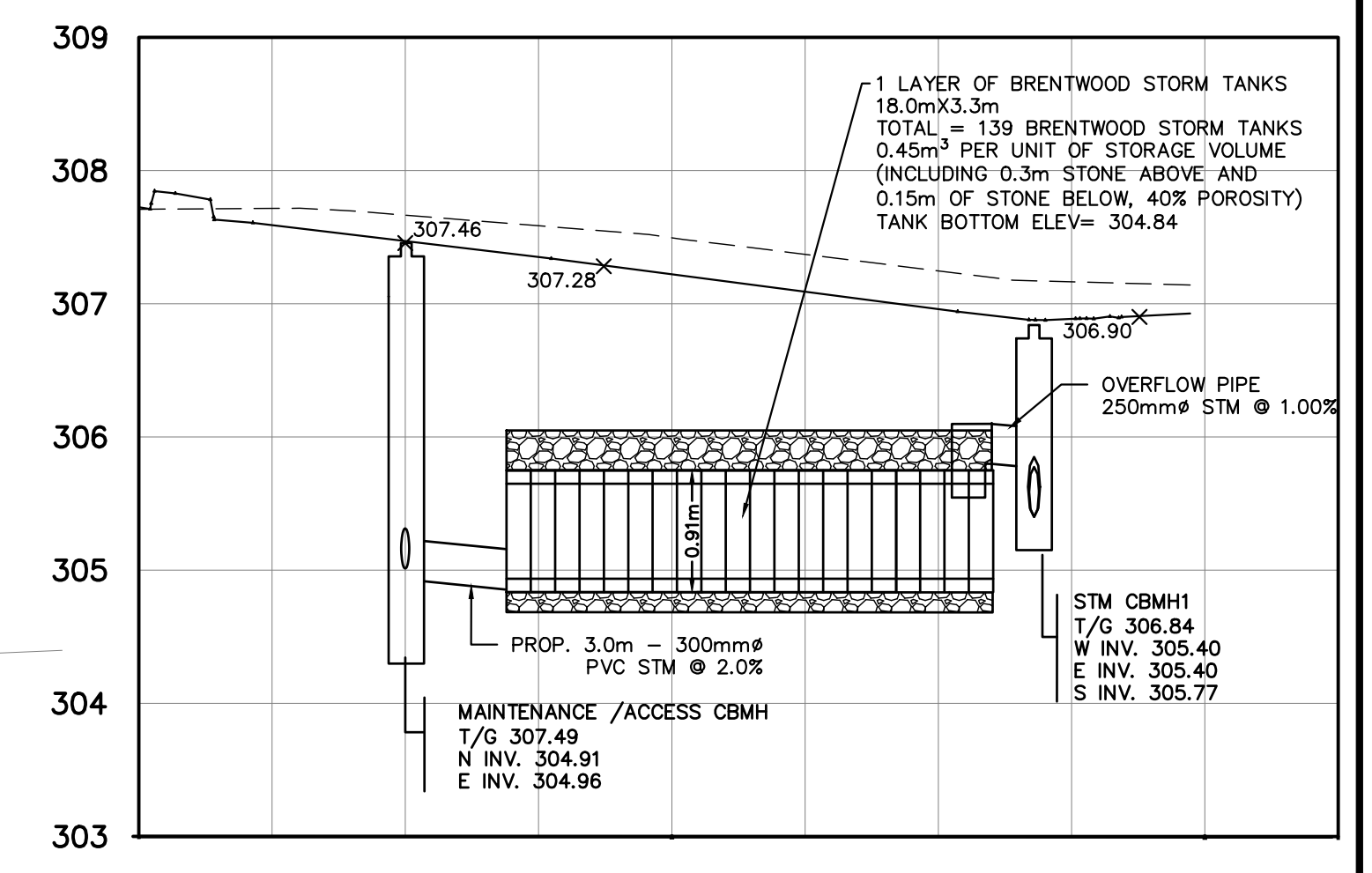


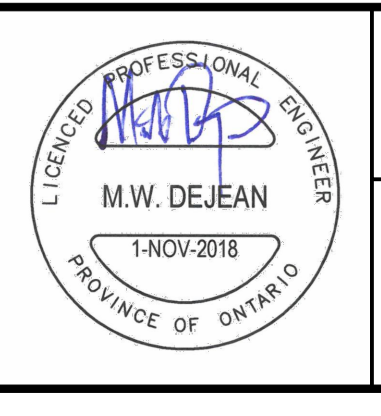
- LEGEND**
- CB CATCH BASIN
  - DCB DOUBLE CATCH BASIN
  - CBMH CATCH BASIN
  - MH STORM MANHOLE
  - MH SANITARY MANHOLE
  - SERVICE CAP
  - ◆ HYD. FIRE HYDRANT
  - ▽ VB WATER VALVE
  - CS CURB STOP W/ SERVICE
  - × 254.63 PROPOSED ELEVATION
  - 254.09 EXISTING ELEVATION
  - 1.5% PROPOSED DIRECTION AND GRADE
  - BACK OF CURB
  - EDGE OF PAVEMENT
  - CURB CUT LOCATION
  - ⊗ HIGH POINT
  - ▨ PROPOSED INSULATION



**BRENTWOOD INFILTRATION TANKS DETAIL**  
 SCALE  
 H: 1:250  
 V: 1:50

NO.	REVISION NOTE	DATE	BY

**BENCHMARK:**  
 SITE BENCHMARK IS THE TOP OF THE IB AT THE NORTHEAST CORNER OF LOT 4, REGISTERED PLAN 51M-695, HAVING AN ELEVATION OF 306.87  
**ELEVATION NOTE:**  
 ELEVATION ARE GEODETIC IN ORIGIN AND WERE DERIVED FROM OBSERVED REFERENCE POINTS (ORP) USING THE LEICA SMARTNET NETWORK (2002 EPOCH) AND ARE REFERRED TO THE CGVD-1928:1978 DATUM.  
**BEARING NOTE:**  
 BEARINGS ARE UTM GRID, DERIVED FROM OBSERVED REFERENCE POINTS A TO B, BY REAL TIME NETWORK (RTN) OBSERVATIONS, UTM ZONE 17, NAD83 (CSRS) (2002 EPOCH) AND ARE REFERRED TO PART OF THE EAST LIMIT OF REID DRIVE, AS SHOWN ON REGISTERED PLAN 51M-695, HAVING A BEARING OF N11°01'00\"



**CADILLAC DEALERSHIP**  
**MAPLEVIEW DRIVE AND REID DRIVE**  
 BARRIE, ON

**SITE SERVICING PLAN**

**PEARSON ENGINEERING LTD.**  
 PEARSONENG.COM PH. 705.719.4785

DESIGNED BY	ZZ/MWD	HORIZ SCALE	1:300	PROJECT #	18009
DRAWN BY	ZZ	VERT SCALE	N/A	DRAWING #	SS-1
CHECKED BY	GMP	DATE	OCTOBER 2018	REVISION #	0