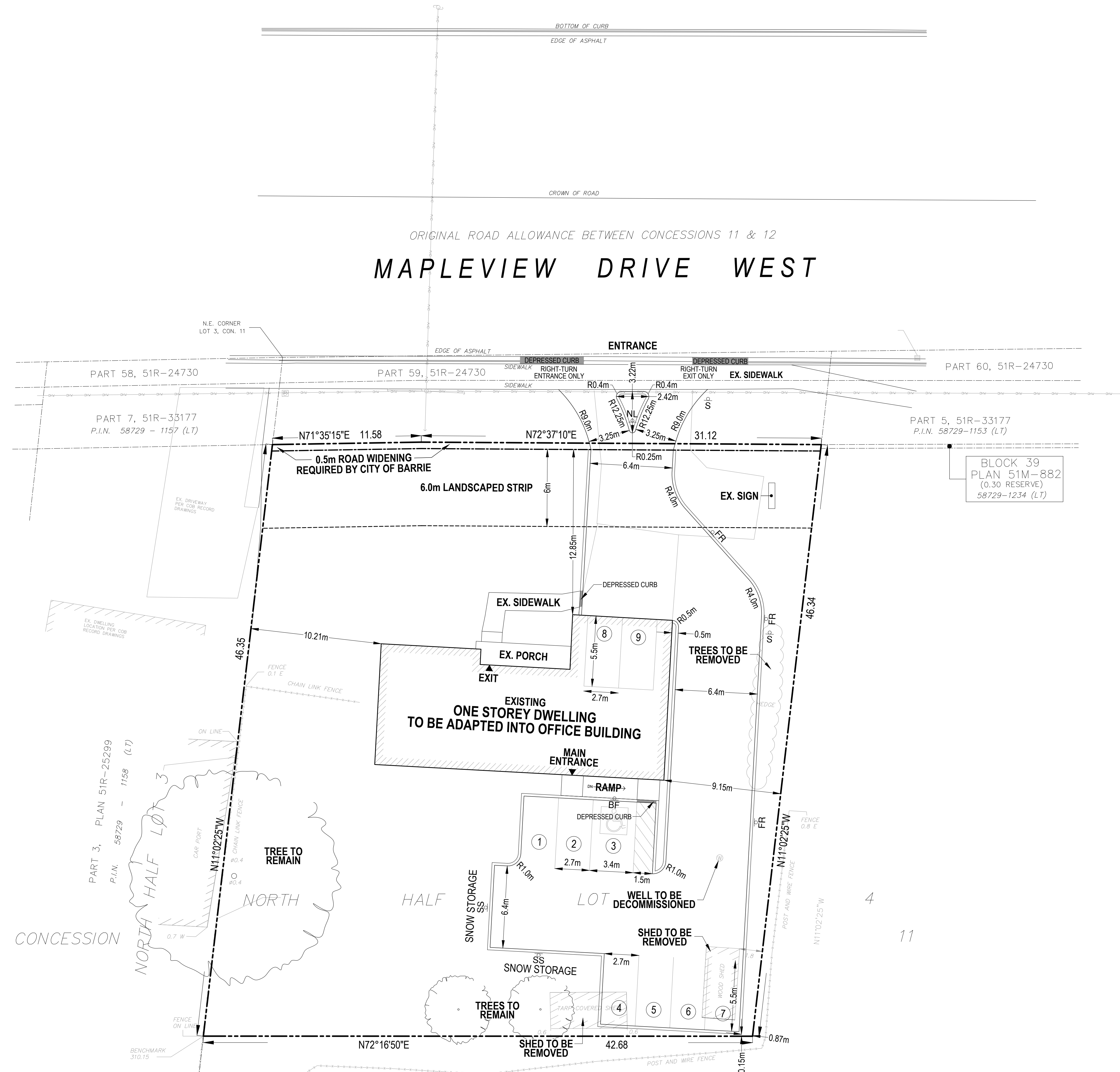
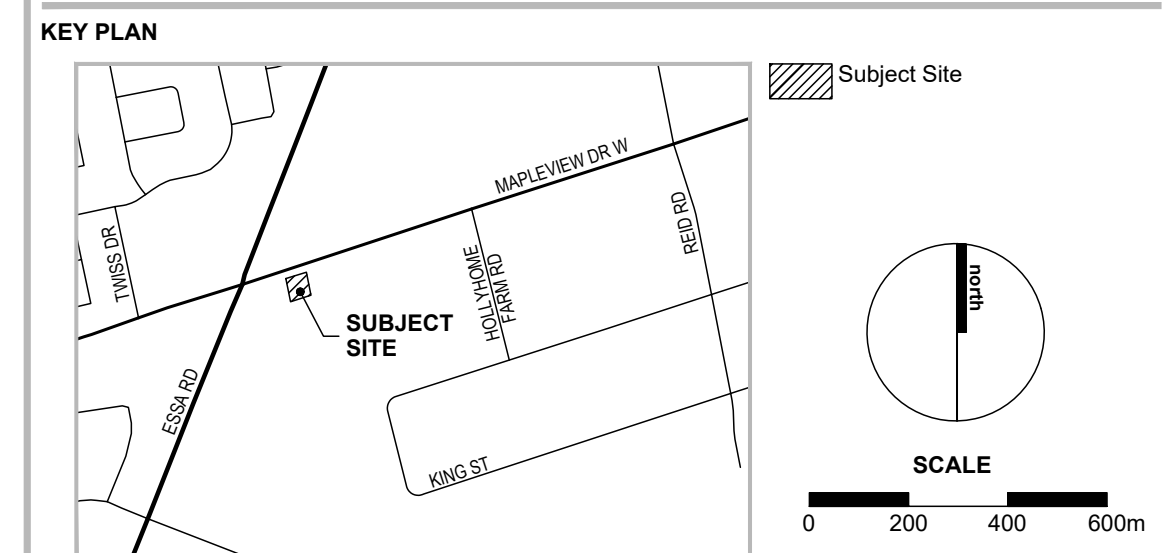


EX. HYD EX. HYDRANT



LEGAL DESCRIPTION
 PART OF NORTH HALF OF LOT 4
 CONCESSION 11
 GEOGRAPHIC TOWNSHIP OF INNISFIL
 CITY OF BARRIE
 COUNTY OF SIMCOE



- LEGEND**
- Site Boundary
 - Block Line
 - Parcel Fabric
 - Edge of Pavement / Edge of Curb
 - Building Exterior Wall
 - ♿ Barrier-free Parking Space
 - ▲ Main Building Entrance
 - ♻ Barrier-free Parking Sign
 - ⊘ No Left Turn Sign
 - ⚡ Fire Route Sign
 - ⊞ Stop Sign
 - ⊞ Snow Storage Sign
 - Depressed Curb

CITY OF BARRIE LIGHT INDUSTRIAL (LI) ZONE

ZONE PROVISION	REQUIRED	PROVIDED
Lot Area (min)	700m ²	1,949.01m ²
Lot Frontage (min)	30m	42.71m
Front Yard (min)	7m	12.85m
Side Yard (min)		
• West Side	• 3m	• 10.21m
• East Side	• 3m	• 9.15m
Rear Yard (min)	7m	58.01m
Lot Coverage (max)	60%	11.7% (227.38m ²)
Building Height (max)	14m	< 14m
Parking		
• 1/30m ² for Office	7 spaces (incl. 1 barrier-free spaces)	9 spaces (incl. 1 barrier-free spaces)
Loading Spaces	0	0
Drive Aisle	6.4m	6.4m

NOTES

- Waste will be stored in the garage of the main building

REVISION No.	DATE	ISSUED/REVISION	BY

STAMP

DATE: MAY 12, 2020

DRAWN BY: M.M.

PLAN SCALE: 1:150 (ARCH D)

FILE No.: 19323A

CHECKED BY: K.C.

OTHER:

PROJECT

367 MAPLEVIEW DRIVE WEST

FILE NAME: SITE PLAN DWG No. 1 of 1

SCALE BAR: 0 5 10 15 20 25 37.5 50 75 100m

MEASUREMENTS SHOWN ON THIS PLAN ARE IN METRES AND CAN BE CONVERTED TO FEET BY DIVIDING BY 0.3048