

- ALL CALIPER TREE PLANTING SHALL HAVE A MINIMUM 600mm DIAMETER ROOT BALL
- CUT AND REMOVE ALL WIRE, ROPE AND BURLAP FROM THE TOP 150mm OF THE ROOT BALL AT THE TIME OF PLANTING
- FOR POORLY DRAINED OR COMPACTED SOILS THE ROOT BALL SHALL BE PLACED SO THAT THE ROOT COLLAR IS A MAXIMUM OF 100mm ABOVE THE FINISHED GRADE. FOR ALL OTHER INSTALLATIONS THE ROOT COLLAR SHALL BE AT OR 50mm ABOVE FINISHED GRADE
- ALL TREES WITHIN 3.0m OF A SIDEWALK OR DRIVEWAY MUST ALSO HAVE A COORDINATED INSTALLATION OF AN APPROVED ROOT BARRIER INSTALLED IN ADDITION TO THE TREE FOR ALL STREETSCAPE APPLICATIONS
- ALL TWINE AND BURLAP MUST BE BIODEGRADABLE (UNTREATED)
- ALL DIMENSIONS ARE IN MILLIMETRES UNLESS OTHERWISE NOTED

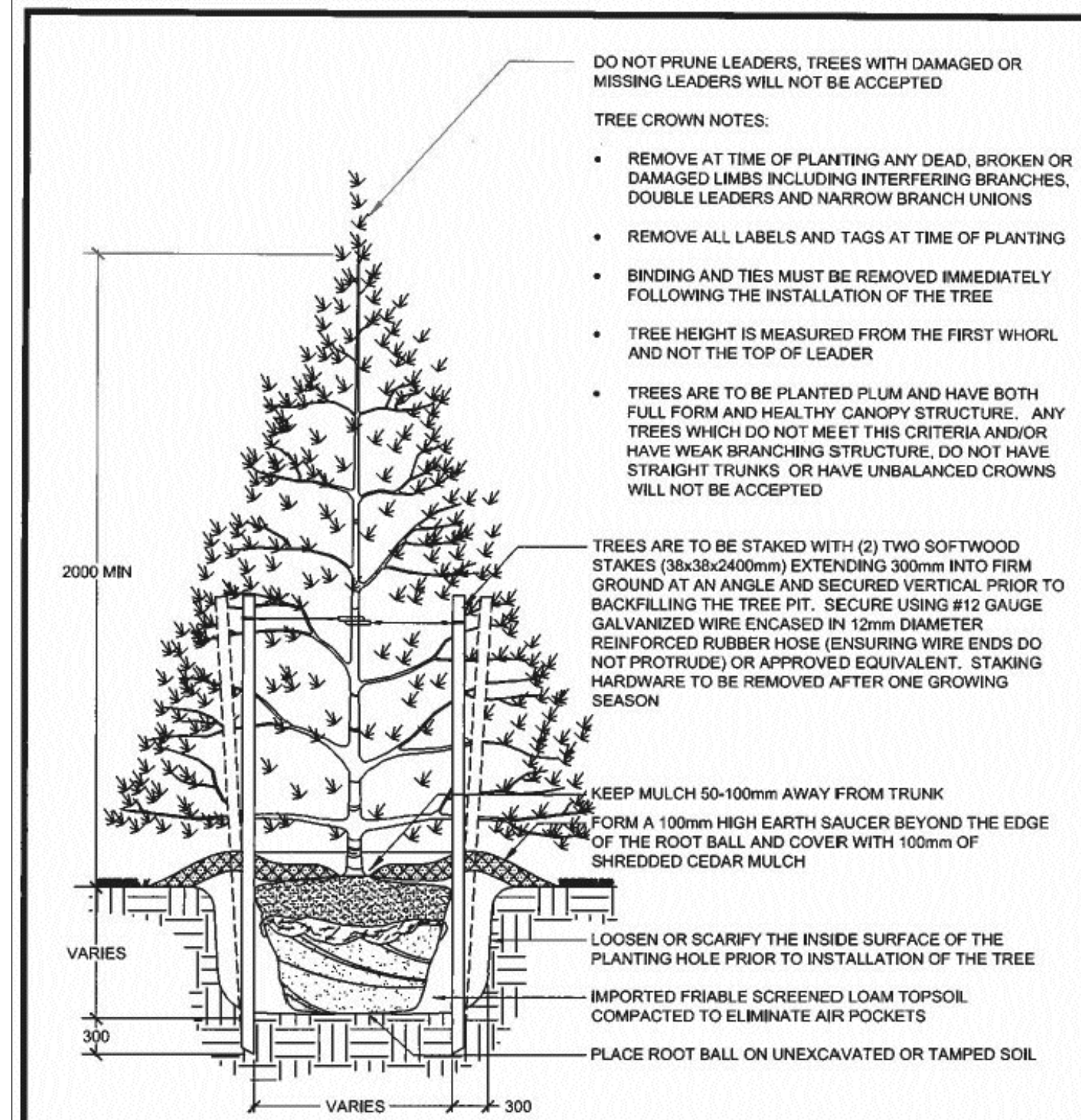
**APPROVED**  
DATE: June 11/15  
J.M.W.  
DIRECTOR OF ENGINEERING

**The City of BARRIE** STANDARD DETAIL

**DECIDUOUS TREE PLANTING DETAIL**

REV No. 4 DATE: JUNE 2015 SCALE: N.T.S.

**BSD-1310** FORMERLY BSD-29



- ALL CONIFEROUS TREE PLANTING SHALL HAVE A MINIMUM 600mm DIAMETER ROOT BALL
- CUT AND REMOVE ALL WIRE, ROPE AND BURLAP FROM THE TOP 150mm OF THE ROOT BALL AT THE TIME OF PLANTING
- FOR POORLY DRAINED OR COMPACTED SOILS THE ROOT BALL SHALL BE PLACED SO THAT THE ROOT COLLAR IS A MAXIMUM OF 100mm ABOVE THE FINISHED GRADE. FOR ALL OTHER INSTALLATIONS THE ROOT COLLAR SHALL BE AT OR 50mm ABOVE FINISHED GRADE
- ALL TWINE AND BURLAP MUST BE BIODEGRADABLE (UNTREATED)
- ALL DIMENSIONS ARE IN MILLIMETRES UNLESS OTHERWISE NOTED

**APPROVED**  
DATE: June 11/15  
J.M.W.  
DIRECTOR OF ENGINEERING

**The City of BARRIE** STANDARD DETAIL

**CONIFEROUS TREE PLANTING DETAIL**

REV No. 4 DATE: JUNE 2015 SCALE: N.T.S.

**BSD-1312** FORMERLY BSD-30



**GENERAL NOTES**

CONTRACTOR IS RESPONSIBLE FOR ALL LOCATES INCLUDING ALL UNDERGROUND SERVICES PRIOR TO ANY EXCAVATION OR INSTALLATIONS. THE CONTRACTOR IS REQUIRED TO NOTIFY THE VARIOUS UTILITY COMPANIES 48 HOURS PRIOR TO THE COMMENCEMENT OF ANY WORK.

ANY ACCOMPANYING DOCUMENTATION RELATING TO THE LANDSCAPE PLAN AND/OR PRESERVATION PLAN SUCH AS TENDER DOCUMENTS AND CHANGE NOTICES ARE TO BE ENDORSED BY J.D.B. ASSOCIATES LIMITED PRIOR TO THE BEGINNING OF ANY SITE WORKS. IN THE EVENT THAT A DISCREPANCY THE DRAWING SHALL BE ASSUMED CORRECT.

IT IS THE RESPONSIBILITY OF THE PERSON OR PERSONS RESPONSIBLE FOR THE CONSTRUCTED WORKS TO NOTIFY THE LANDSCAPE ARCHITECT WHEN PREPARED FOR ANY REQUIRED INSPECTIONS AND SIGN OFFS.

SCHEDULED MEETINGS SHALL TAKE PLACE AT THE CLOSEST MUTUALLY CONVENIENT TIME.

No.	REVISION	DATE	APRVD.
1.	CLIENT REVIEW	Dec. 12, 2019	ST
2.	SUBMITTED TO THE CITY OF BARRIE	Feb. 25, 2020	ST
3.	AS PER CITY OF BARRIE COMMENTS	June 15, 2020	ST
4.	AS PER CITY OF BARRIE COMMENTS	November 25, 2020	ST
5.	AS PER CITY OF BARRIE COMMENTS	March 10, 2021	ST

ALL DRAWINGS AND SPECIFICATIONS ARE INSTRUMENTS OF SERVICE AND ARE THE PROPERTY OF J. D. B. ASSOCIATES LIMITED. DRAWINGS ARE NOT TO BE MODIFIED AND/OR REPRODUCED WITHOUT THE WRITTEN CONSENT OF J.D.B. ASSOCIATES LIMITED. REPRODUCTION OF DRAWINGS IN ANY FORM WITHOUT THE CONSENT OF J.D.B. ASSOCIATES LIMITED VOIDS THE DRAWING AT WHICH THE J.D.B. ASSOCIATES LIMITED ACCEPTS NO LIABILITY FOR THE DRAWING CONTENT OR WORKS RESULTING FROM SAID REPRODUCTION. DRAWINGS MAY BE REPRODUCED BY MUNICIPAL AND GOVERNMENT AGENCIES RESPONSIBLE FOR APPROVALS FOR THEIR OWN USE. J. D. B. ASSOCIATES RESERVES THE RIGHT TO WITHDRAW ANY DRAWINGS FROM GOVERNMENT OR MUNICIPAL AGENCIES WHETHER APPROVED OR NOT IN THE EVENT THAT ACCOUNTS ARE NOT SETTLED OR REMAIN OUTSTANDING.

IT IS THE RESPONSIBILITY OF THE CONTRACTOR TO VERIFY ALL DIMENSIONS ON THE SITE AND REPORT ANY DISCREPANCIES OR VARIATIONS FROM THE SUPPLIED INFORMATION TO THE LANDSCAPE ARCHITECT WITH THE PROJECT. J. D. B. ASSOCIATES LIMITED IS NOT RESPONSIBLE FOR THE ACCURACY OF SURVEY, ARCHITECTURAL, MECHANICAL, ENGINEERING OR ELECTRICAL INFORMATION SHOWN ON THE DRAWING. FOR FURTHER INFORMATION REFER TO APPROPRIATE SURVEY, ARCHITECTURAL, MECHANICAL, ENGINEERING OR ELECTRICAL DRAWINGS PRIOR TO PROCEEDING WITH ANY WORKS.

THIS DRAWING IS NOT TO BE SCALED.

BASE INFORMATION PROVIDED BY:  
JDB ASSOCIATES LTD  
565 Bays Dr. Barrie, ON

BASE PLAN OBTAINED:  
January 2018



**JDB ASSOCIATES LTD.**

Urban Designers  
Landscape Architects  
Arborealists

274 Burton Ave., Suite 1201  
Barrie, Ontario  
L4N 5W4

Fax: 705-722-5660  
Tel: 705-722-6278

**440 VETERANS DRIVE, BARRIE, ONTARIO**

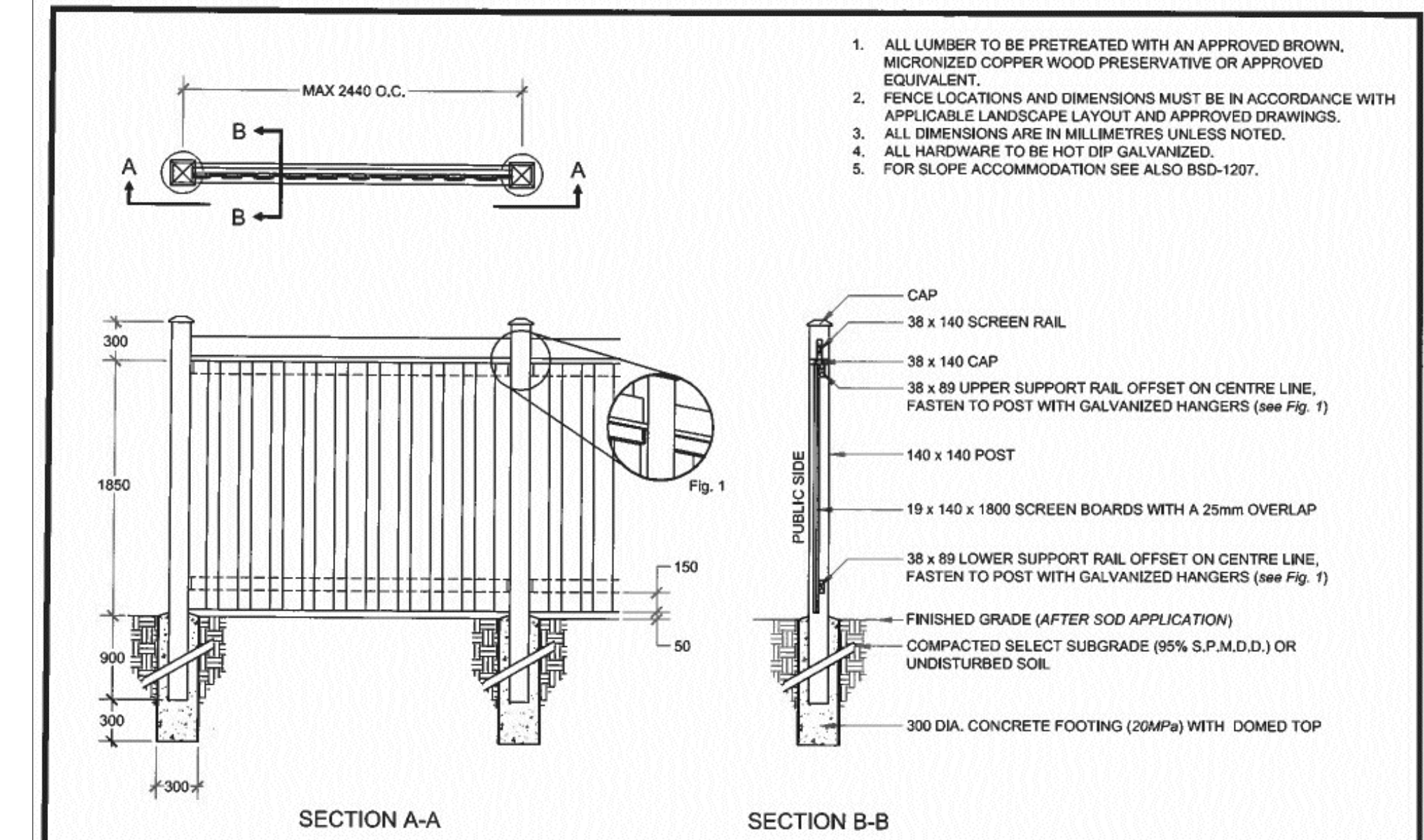
BLOCKS 87 AND 88, REGISTERED PLAN 51M-835

**FENCING DETAILS**

SCALE: N.T.S. DATE: January 29, 2018 DESIGNED BY: ST REVIEWED BY: NB

CITY FILE No. D11-008-2020 OUR FILE REF.# 1162A-18 DRAWN BY: ST

**LP-2**



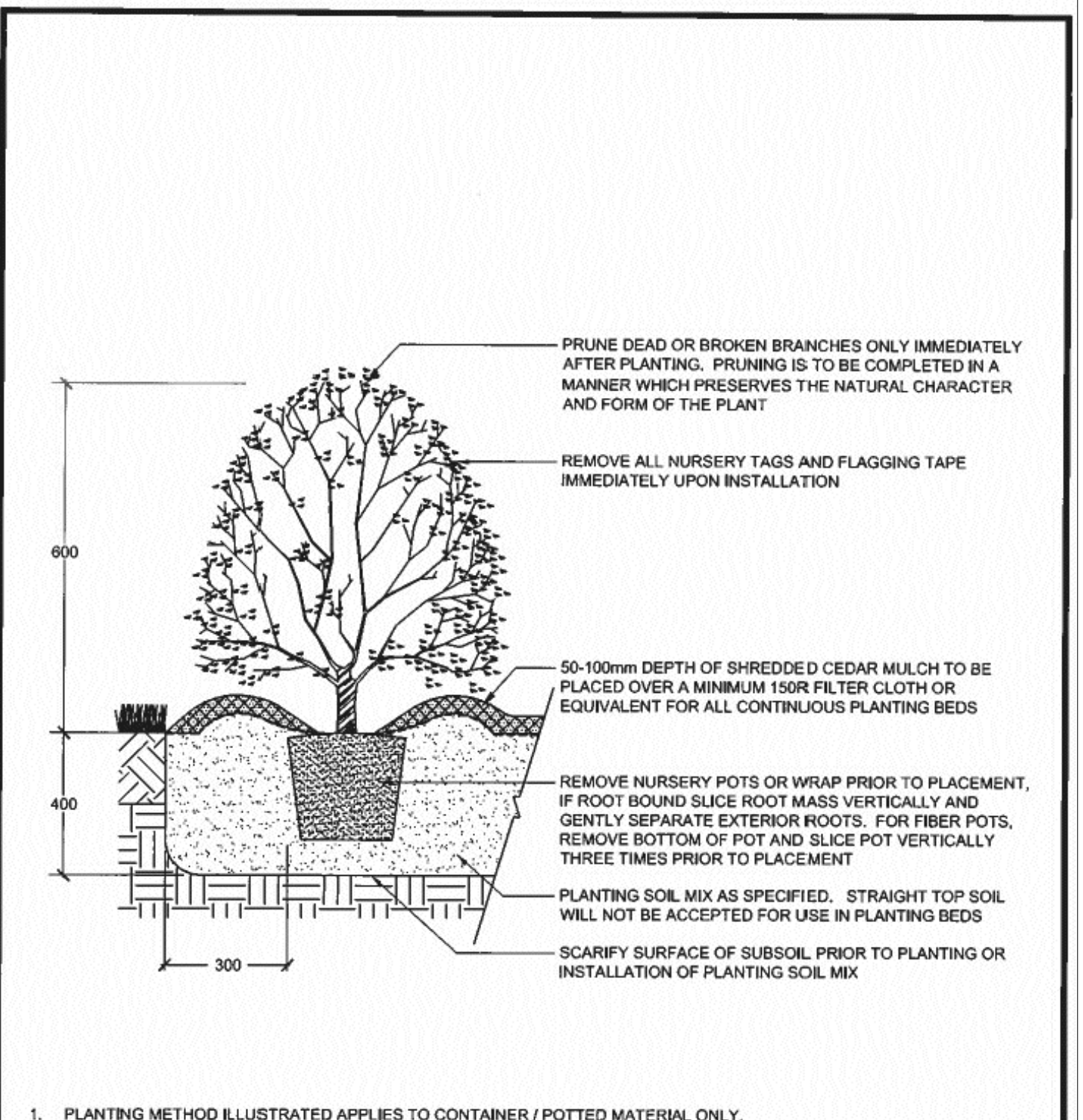
**The City of BARRIE** STANDARD DETAIL

**OVERLAPPING BOARD RESIDENTIAL TO RESIDENTIAL FENCE**

REV No. 1 DATE: JUNE 2015 SCALE: N.T.S.

**APPROVED**  
DATE: June 11/15  
J.M.W.  
DIRECTOR OF ENGINEERING

**BSD-1206**



- PLANTING METHOD ILLUSTRATED APPLIES TO CONTAINER / POTTED MATERIAL ONLY
- PLANTING DETAIL DOES NOT SPECIFICALLY RELATE TO ANY PARTICULAR SPECIES AND SHALL BE APPLIED TO BOTH DECIDUOUS AND CONIFEROUS POTTED MATERIAL
- SET SHRUBS 50mm HIGHER THAN GRADE TO ALLOW FOR SETTLEMENT
- ALL SHRUB PLANTING IS TO OCCUR IN CONTINUOUS MULCHED PLANTING BEDS WITH WEED CONTROL / FILTER FABRIC
- DO NOT COVER THE BASE OF SHRUB WITH MULCH
- ALL SOIL SHALL BE ADEQUATELY COMPACTED TO PREVENT AIR POCKETS AND SETTLEMENT
- ALL DIMENSIONS ARE IN MILLIMETRES UNLESS OTHERWISE NOTED

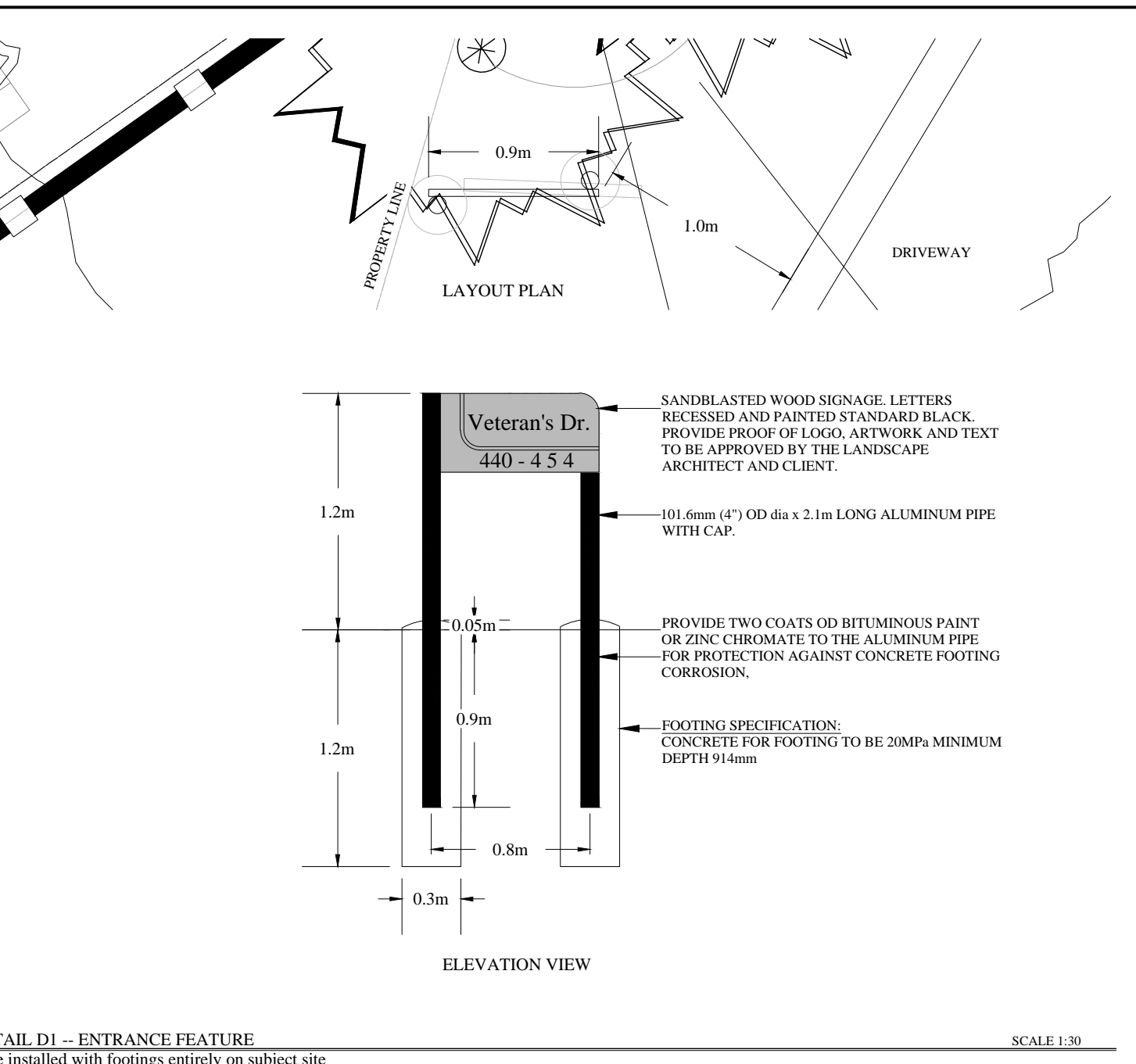
**APPROVED**  
DATE: June 11/15  
J.M.W.  
DIRECTOR OF ENGINEERING

**The City of BARRIE** STANDARD DETAIL

**CONTAINER GROWN SHRUB PLANTING DETAIL**

REV No. 4 DATE: JUNE 2015 SCALE: N.T.S.

**BSD-1314** FORMERLY BSD-31



DETAIL D1 - ENTRANCE FEATURE  
to be installed with footings entirely on subject site

**NUVO**

13371 COLERAINE DR  
CALEDON, ON L7E 3B6  
PHONE: (905) 857-1010  
FAX: (905) 857-9356  
www.nuvoiron.com

SELECT DESIRED POST CAP:

- SPEAR
- PYRAMID

SELECT DESIRED GATE OPTIONS:

- GATE OPENING
- LOCK BOX

SELECT DESIRED COLOUR:

- HIGH GLOSS BLACK
- WHITE
- BROWN
- GREEN
- FLAT BLACK
- TEXTURED BLACK
- CUSTOM COLORS AVAILABLE UPON REQUEST

97 1/4" (2470 MM) CENTER TO CENTER

90 3/4" (2305 MM)

3 3/4" (95 MM) BETWEEN PICKETS

36" (914 MM)

10 1/8" (257 MM)

48" (1220 MM)

30" (762 MM)

8" (203 MM)

PRE-PUNCHED RAILS

CONCRETE FOOTINGS BELOW FROST LINE

LEVEL GROUND

**SPECIFICATIONS:**

**POST RAILS AND PICKETS:**

- EXTRUDED MARINE ALUMINUM
- CHROMATE CONVERSION COATING
- ELECTROSTATICALLY APPLIED
- THERMALLY BONDED POLYESTER POWDER COATING
- MINIMUM FILM THICKNESS 2.5 mm
- COATING AVAILABLE UPON REQUEST

**PICKETS:**

- 1 1/2" X 3/4" (38 mm X 19 mm) 14 GAUGE
- FITTINGS: 12 GAUGE STAMPED MARINE ALUMINUM WELDS ALUMINUM
- STANDARD PANEL WIDTH: 90 3/4" (2305 mm)
- STANDARD PANEL HEIGHTS - REFER TO NUVO IRON CATALOG
- OPTIONAL HEIGHTS AVAILABLE UPON REQUEST
- STANDARD GATE OPENINGS INSIDE POSTS - REFER TO NUVO IRON CATALOG
- WARRANTY 5 YEARS
- UPON REQUEST
- EXTENDED WARRANTY AVAILABLE

**RAILS:**

- 2 1/2" X 1 1/2" (63 mm X 38 mm) 11 GAUGE

NOTES:

- INSTALLATION TO BE COMPLETED IN ACCORDANCE WITH MANUFACTURER'S SPECIFICATIONS.
- DO NOT SCALE DRAWING
- THIS DRAWING IS INTENDED FOR USE BY ARCHITECTS, ENGINEERS, CONTRACTORS, CONSULTANTS AND DESIGN PROFESSIONALS FOR PLANNING PURPOSES ONLY. THIS DRAWING MAY NOT BE USED FOR CONSTRUCTION
- ALL INFORMATION CONTAINED HEREIN WAS CURRENT AT THE TIME OF DEVELOPMENT BUT MUST BE REVIEWED AND APPROVED BY THE PRODUCT MANUFACTURER TO BE CONSIDERED ACCURATE.
- CONTRACTOR'S NOTE: FOR PROJECT AND COMPANY INFORMATION VISIT [www.CADdetails.com/info](http://www.CADdetails.com/info) AND ENTER REFERENCE NUMBER.

**MEMORIAL COLLECTION - ALUMINUM**

MEMORIAL COLLECTION: NUVO™ XXV ALUMINUM SCALE 1:30