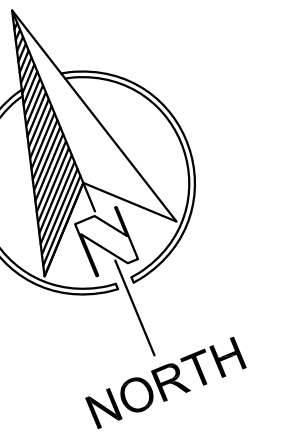


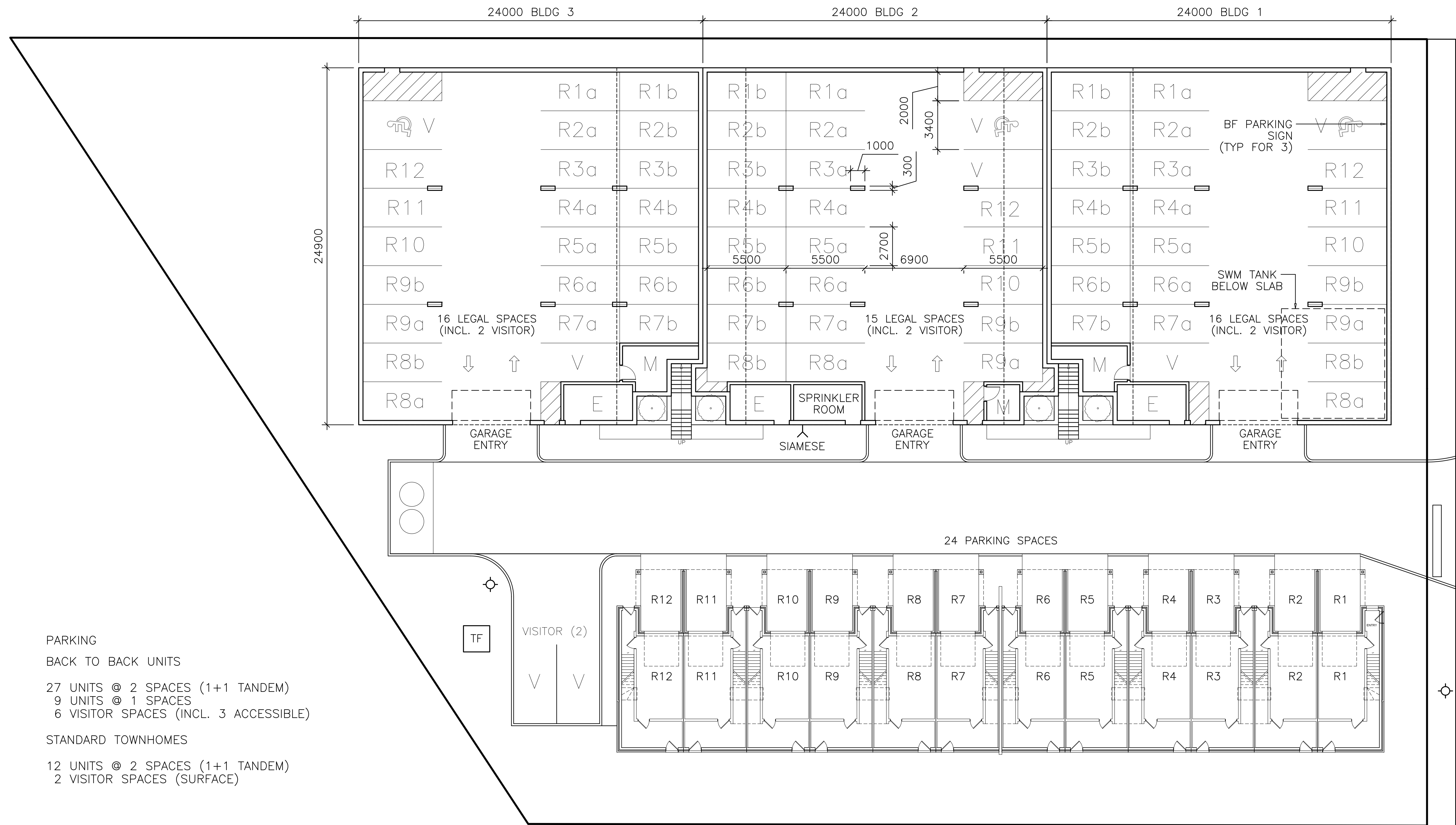
All drawings, specifications, related documents and design are the copyright property of Patrick Markus Luckie Architect and shall be returned upon request. Reproduction of this drawing, specification, related documents and design for other or in part is strictly forbidden without the written permission of Patrick Markus Luckie Architect.

This drawing, as an instrument of service, is provided by and is the property of Patrick Markus Luckie Architect and shall be used only for the project named on this drawing and shall be returned upon request. The contractor is responsible for the coordination and verification of all dimensions, conditions, levels and all measurements and conditions on site as they pertain to these documents. The contractor shall report any discrepancies to the consultant in writing prior to the commencement of any affected work.

Do Not scale this drawing.
This drawing shall not be used for construction purposes unless counterchecked.
Patrick Markus Luckie Architect



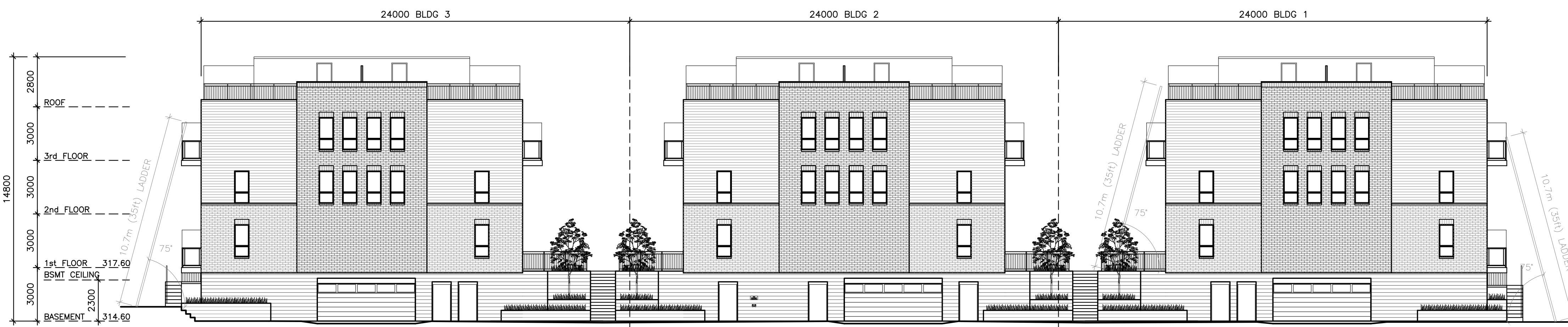
ESSA ROAD



PARKING
BACK TO BACK UNITS
27 UNITS @ 2 SPACES (1+1 TANDEM)
9 UNITS @ 1 SPACES
6 VISITOR SPACES (INCL. 3 ACCESSIBLE)

STANDARD TOWNHOMES
12 UNITS @ 2 SPACES (1+1 TANDEM)
2 VISITOR SPACES (SURFACE)

1 PARKING PLAN
A-0.1b SCALE: 1:150



2 FIRE ROUTE ELEVATION (CONCEPT ONLY)
A-0.1b SCALE: 1:150

Revisions:	
Date	Particular
MAR.21.19	EXTEND BASEMENT PARKING

Issue:	
Date	Particular
FEB.26.18	ISSUED FOR REVIEW
OCT.30.18	ISSUED FOR SITE PLAN APPLICATION
JUN.10.19	RE-ISSUED FOR SITE PLAN APPLICATION
SEP.03.20	ISSUED FOR FINAL APPROVAL



ESSA ROAD
URBAN TOWNHOME CONDOMINIUMS

521 ESSA ROAD, BARRIE

PARKING PLAN

PROJECT No.: 17-02

A-0.1b