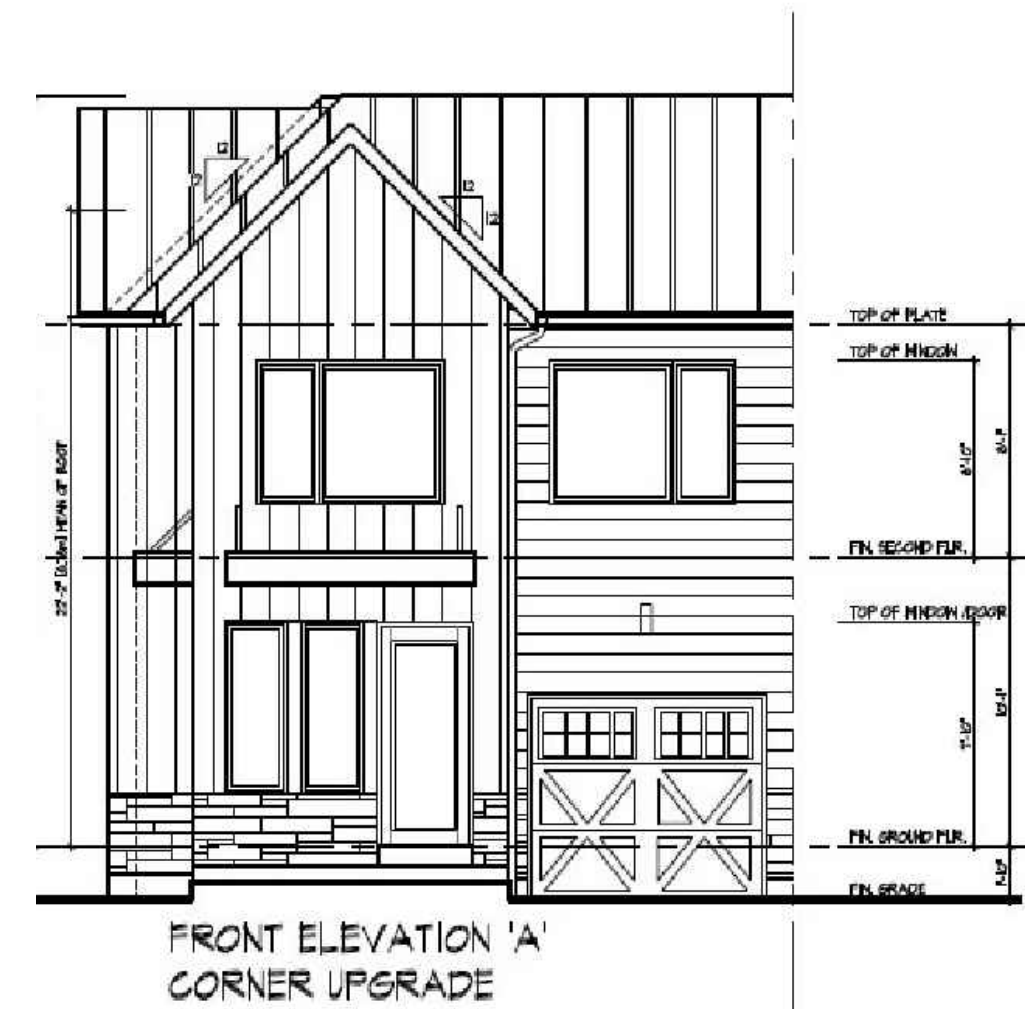


ELEVATIONS

ELE-1

PART OF LOT 3, CONCESSION 11
IN THE FORMER TOWNSHIP OF INNISFIL
829 ESSA ROAD, CITY OF BARRIE



FRONT ELEVATION 'A'
CORNER UPGRADE



FLANKAGE ELEVATION 'A' - CORNER UPGRADE



ELE-1



IPS INNOVATIVE PLANNING SOLUTIONS
PLANNERS • PROJECT MANAGERS • LAND DEVELOPERS
647 WELHAM ROAD, UNIT 9A, BARRIE, ON, L4N 0B7
tel: 705 • 812 • 3281 fax: 705 • 812 • 3438 e: info@ipsconsultinginc.com www.ipsconsultinginc.com

Date:	March 2, 2021	Drawn By:	A.S.
File:	18-803	Checked:	D.V.