

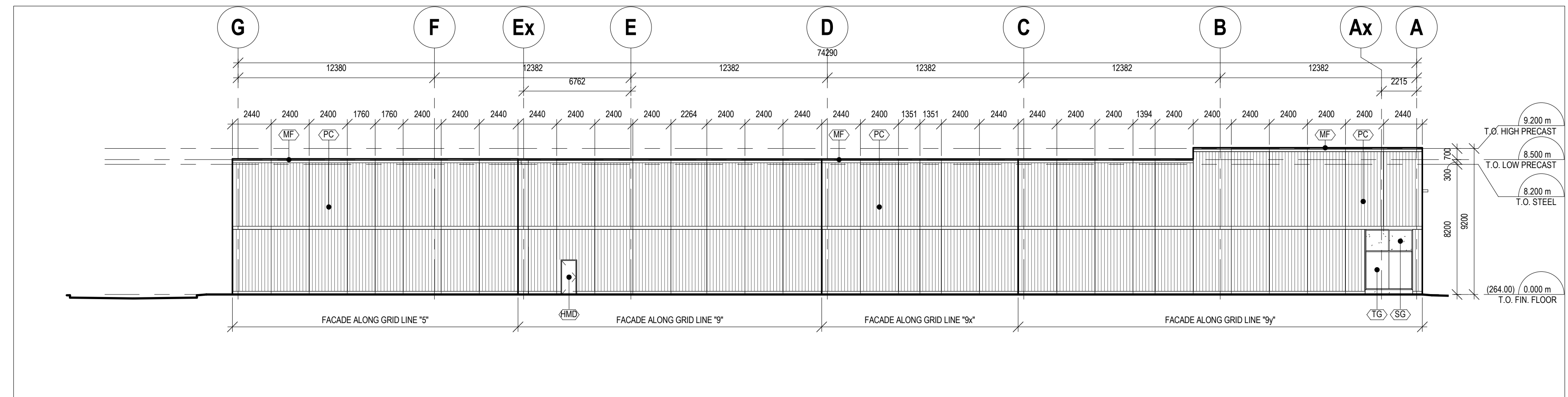
All drawings, specifications, related documents and design are the copyright property of the architect and must be returned upon request. Reproduction of the drawings, specifications, related documents and design in whole or in part is strictly forbidden without the architect's written permission.

This drawing, as an instrument of service, is provided by and is the property of BNKC Architects Inc., and shall be used only for the project named on this drawing and solely for reference purposes only. The contractor is responsible for the coordination and verification of all dimensions contained herein and all measurements and conditions on site as they pertain to these documents. The contractor shall report any discrepancies to the consultant in writing prior to the commencement of any affected work.

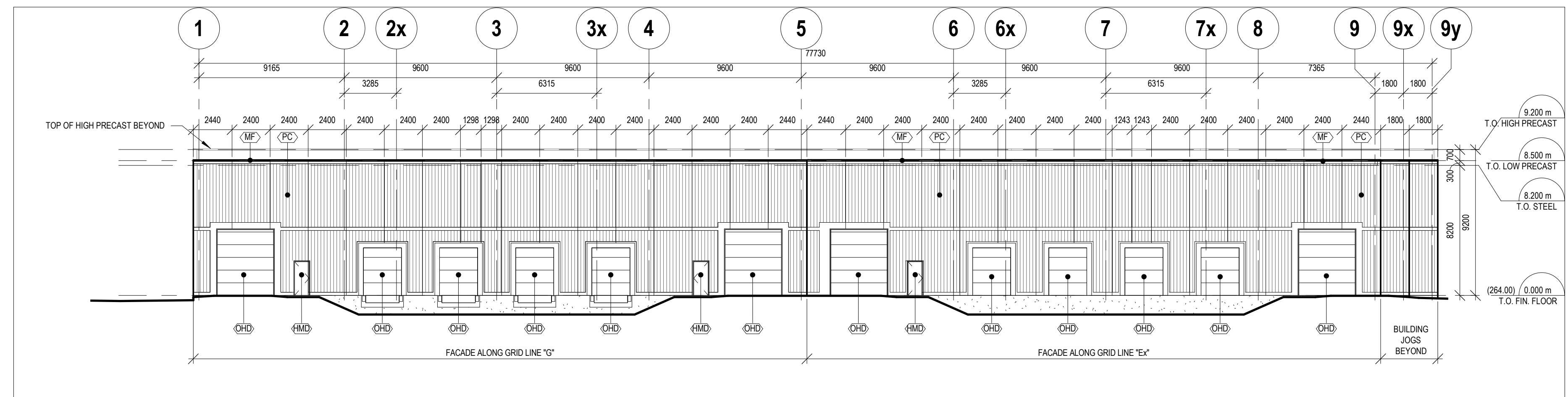
DO NOT SCALE THIS DRAWING
This drawing shall not be used for construction purposes unless countersigned

BNKC Architects Inc.

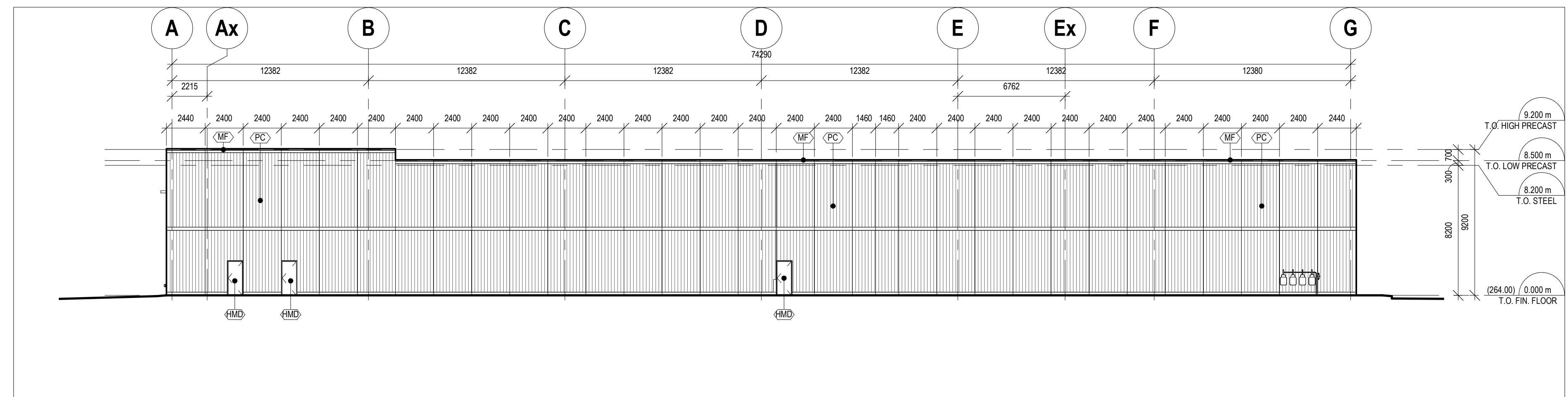
REV. NO:	DATE:	ISSUED FOR:
1	2019/10/02	ISSUED FOR SPA



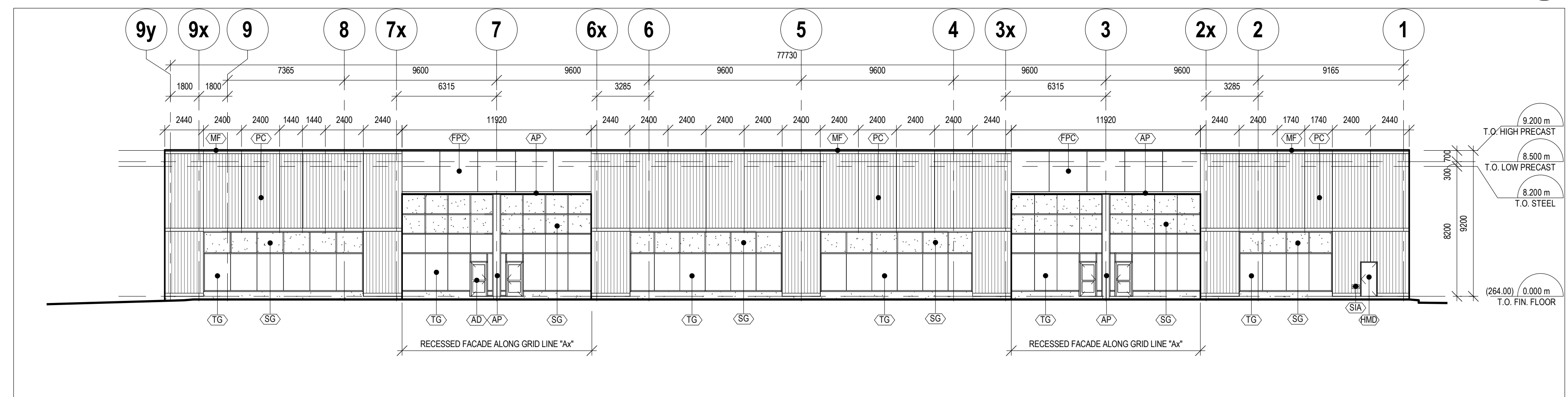
EAST (HURONIA ROAD) ELEVATION 4
1:200



SOUTH (REAR LOADING) ELEVATION 3
1:200



WEST ELEVATION 2
1:200



NORTH (FRONT) ELEVATION 1
1:200

MATERIAL LEGEND	
(PC)	RIBBED PRECAST CONCRETE PANELS ("STANDARD GREY" COLOUR & RIB PATTERN No. 4)
(FPC)	FLAT FACED PRECAST CONCRETE PANELS ("STANDARD GREY" COLOUR)
(ECF)	EXPOSED CONCRETE FOUNDATION WALL OR PIER, MEDIUM SANDBLASTED FINISH
(MF)	PRE-FINISHED METAL FLASHING FINISH: QC-317 "WHITE" WHITE
(AP)	CLEAR ANODIZED ALUMINUM PANEL, COLUMN COVER & CANOPY FASCIA (COLOUR TO BE SELECTED BY ARCHITECT)
(TG)	LOW-E GREEN TINTED DOUBLE-GLAZED UNITS IN CLEAR ANODIZED ALUMINUM CURTAINWALL FRAMING
(SG)	SINGLE-GLAZED INSULATED SPANDREL UNITS IN CLEAR ANODIZED ALUMINUM CURTAINWALL FRAMING ("ATLANTICA" GLASS BY VITRO)
(AD)	CLEAR ANODIZED ALUMINUM ENTRANCE DOORS WITH CLEAR DOUBLE TEMPERED GLAZED UNITS
(HMD)	PAINTED HOLLOW METAL DOOR (INSULATED) IN PAINTED PRESSED METAL FRAME
(OHD)	PRE-FINISHED METAL OVERHEAD DOOR (INSULATED) FINISH: QC-317 "WHITE" WHITE
(SCU)	PRE-FINISHED METAL OVERFLOW ROOF SCUPPERS FINISH: QC-317 "WHITE" WHITE
(GM)	GAS METERS (REFER TO MECHANICAL DRAWINGS)
(SIA)	WALL-MOUNTED SIAMESE FIRE CONNECTION
(LF1)	WALL-MOUNTED LIGHT FIXTURE FINISH: WHITE (REFER TO ELECTRICAL DRAWINGS)
(LF2)	WALL-MOUNTED LIGHT FIXTURE FINISH: WHITE (REFER TO ELECTRICAL DRAWINGS)
(PDP)	BARRIER-FREE PUSH PLATE FOR POWER DOOR OPERATOR (REFER TO DOOR SCHEDULE)

ARCHITECT
BNKC Architects Inc.
410 - 672 Dupont St., Toronto, ON, Canada, M6G 1Z6
T. 416.531.7717

STRUCTURAL
--
T. --

MECHANICAL
--
T. --

ELECTRICAL
--
T. --

CLIENT
KINGSLEA DEVELOPMENTS LTD.
107 Woodbine Downs Blvd., Unit 16
Etobicoke, Ontario
T. 416.213.0120

ELLIS DRIVE INDUSTRIAL

PLAN NORTH

EXTERIOR ELEVATIONS

DMC	DMC
DRAWN BY	CHECKED BY
19029	As Indicated
PROJ NO	SCALE
	ARCH D
	FORMAT
	2019/07/25
	PLOT DATE

A401