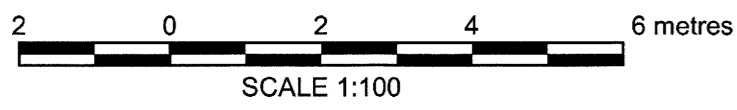
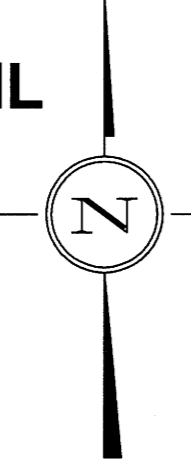
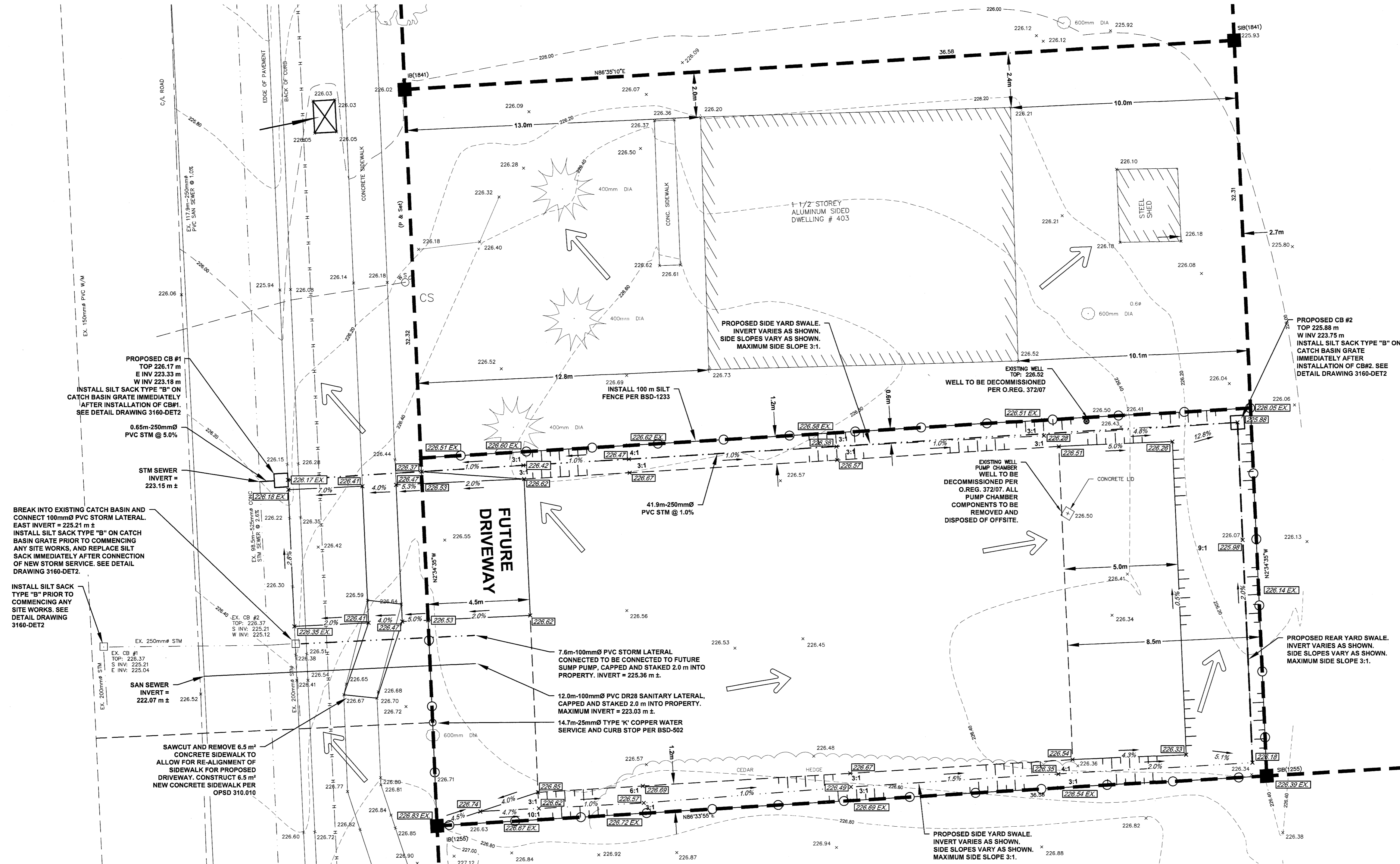
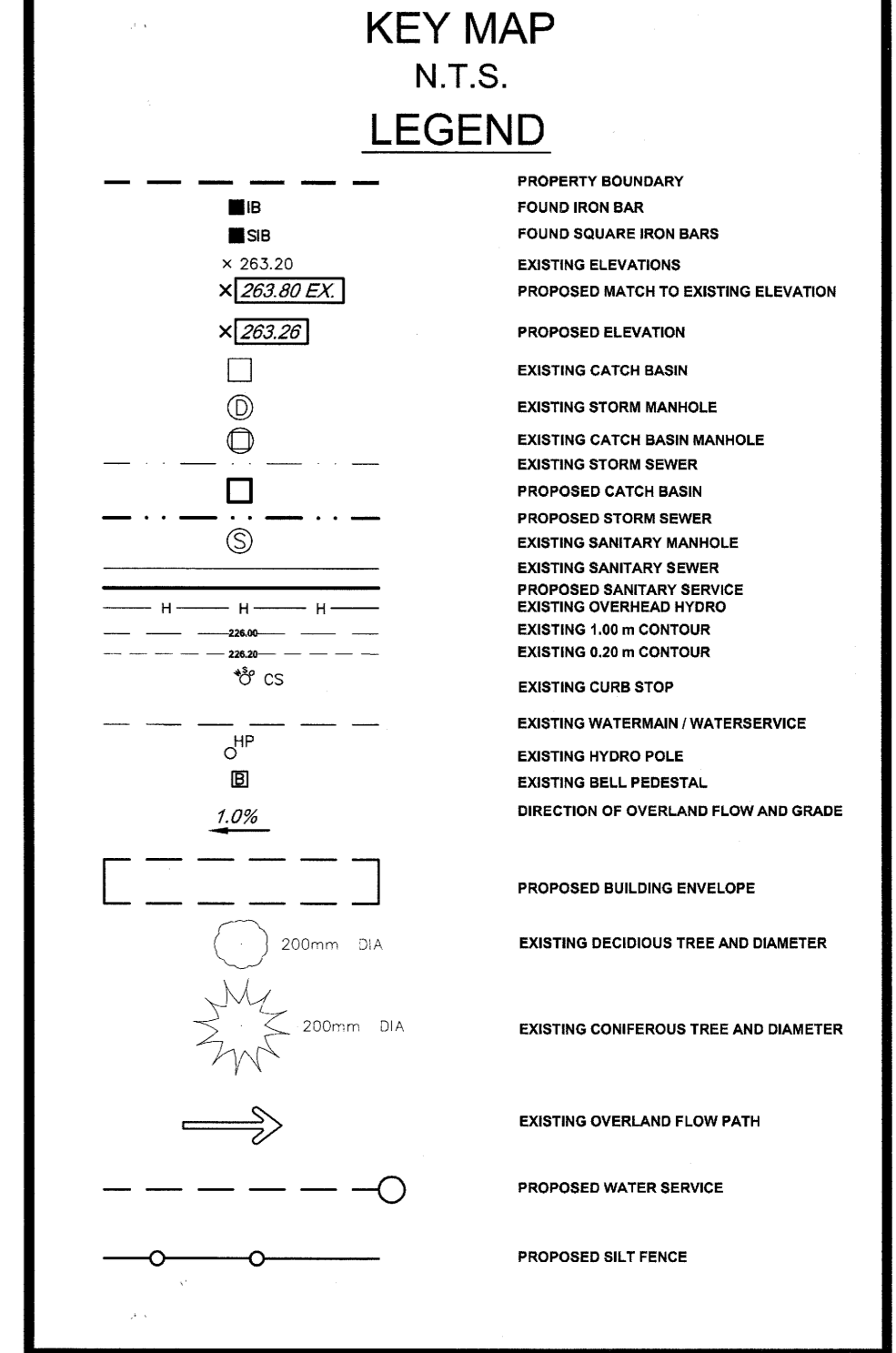
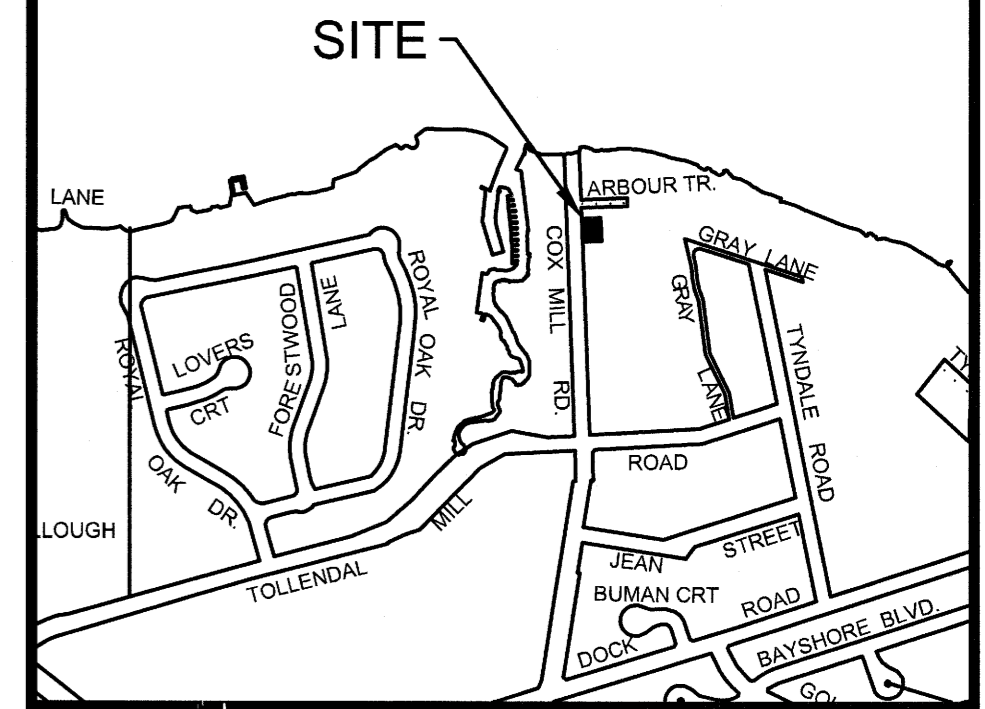


**PART OF LOT 13, CONCESSION 14  
GEOGRAPHIC TOWNSHIP OF INNISFIL  
REGISTERED PLAN 321  
PART OF LOT 2  
EAST SIDE OF COLBORNE STREET  
REGISTERED PLAN 321  
NOW KNOWN AS  
PART 2, PLAN 51R - 41028  
CITY OF BARRIE**



3160 - SSG



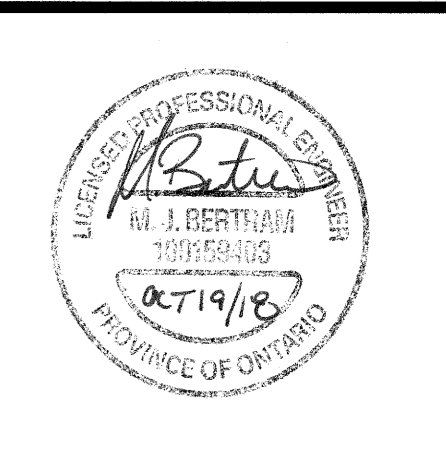
BREAK INTO EXISTING CATCH BASIN AND CONNECT 100mmØ PVC STORM LATERAL. EAST INVERT = 225.21 m ±. INSTALL SILT SACK TYPE "B" ON CATCH BASIN GRATE PRIOR TO COMMENCING ANY SITE WORKS, AND REPLACE SILT SACK IMMEDIATELY AFTER CONNECTION OF NEW STORM SERVICE. SEE DETAIL DRAWING 3160-DET2.

INSTALL SILT SACK TYPE "B" PRIOR TO COMMENCING ANY SITE WORKS. SEE DETAIL DRAWING 3160-DET2.

SAWCUT AND REMOVE 6.5 m<sup>2</sup> CONCRETE SIDEWALK TO ALLOW FOR RE-ALIGNMENT OF SIDEWALK FOR PROPOSED DRIVEWAY. CONSTRUCT 6.5 m<sup>2</sup> NEW CONCRETE SIDEWALK PER OPSD 310.010

**SCHEDULE OF REVISIONS**

NO.	DATE	DESCRIPTION	CHECKED



**JANKOV - ZBLA**  
403 COX MILL ROAD  
CITY OF BARRIE  
LOT GRADING & SERVICING PLAN

PROJECT NO. 18 - 3160 | DRWG NO. 3160 - SSG  
 DATE: SEPTEMBER 2018 | SCALE: 1:100  
 DRAWN: NDK/MJB | CHECKED: | APPROVED: |  
**SBA Skelton Brumwell & Associates Inc.**  
 ENGINEERING PLANNING ENVIRONMENTAL CONSULTANTS  
 93 BELL FARM ROAD, SUITE 107 | TELEPHONE (705) 726-1141  
 BARRIE, ONTARIO L4M 5G1 | FAX (705) 726-0331  
 www.skeltonbrumwell.ca | TOLL FREE (877) 726-1141

Copyright © 2018 Skelton Brumwell & Associates Inc. All rights reserved. This document is protected by copyright laws and may not be reproduced in any manner, or for any purpose, except with the written permission of the copyright holder.