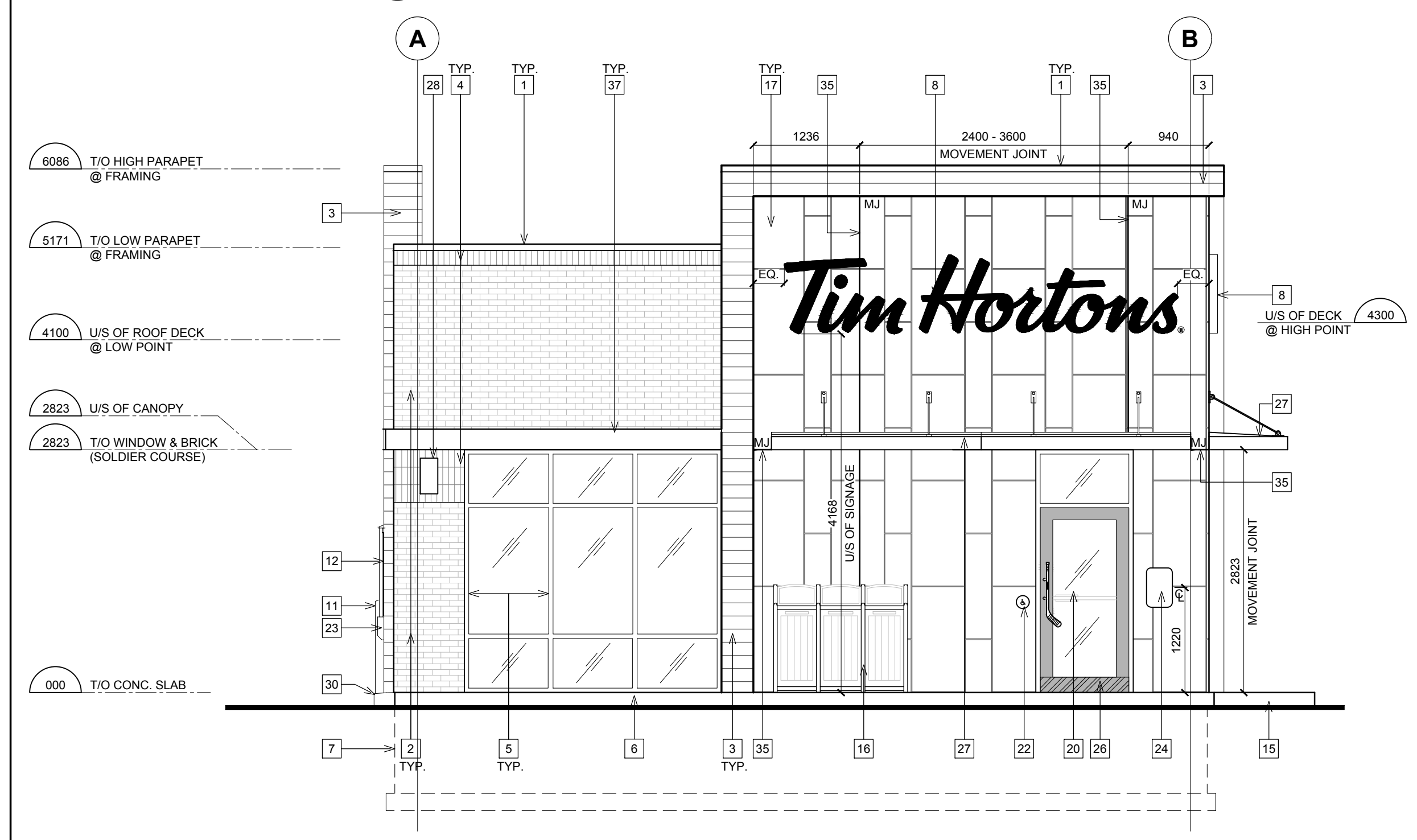


1 SOUTH ELEVATION
A5 SCALE: 1:50



2 WEST ELEVATION
A5 SCALE: 1:50

SYMBOL LEGEND

1	NOTE REFERENCE REFER TO ELEVATION NOTES
CT#	CANOPY TYPE

GENERAL NOTES

- REFER TO EXTERIOR FINISH SCHEDULE FOR CAULKING COLOUR.
- THE CONTRACTOR SHALL BECOME FAMILIAR WITH AND FOLLOW ALL DRAWINGS AND SPECIFICATIONS.

ISSUE TABLE

No.	Date (mm/dd/yy)	Description
01	11-04-19	ISSUED FOR SPA

REVISIONS

No.	Date	Description
-----	------	-------------

DRAWINGS REVISED AS PER DESIGN BULLETIN

No.	Date	Description
01	11-04-19	REVISED AS PER DB #9-19

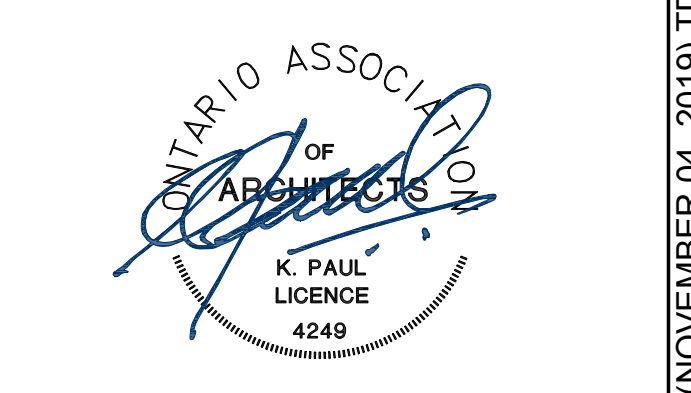
NOT FOR CONSTRUCTION



PROJECT NORTH

THIS DRAWING IS OWNED BY OR LICENSED FOR USE BY TIM HORTONS (OR ITS AFFILIATED OR RELATED COMPANIES) AND MAY NOT BE REPRODUCED, USED, DOWNLOADED, DISSEMINATED, PUBLISHED, OR TRANSFERRED IN ANY FORM OR BY ANY MEANS, EXCEPT WITH THE PRIOR WRITTEN CONSENT OF TIM HORTONS. COPYRIGHT INFRINGEMENT IS A VIOLATION OF FEDERAL LAW SUBJECT TO CRIMINAL AND CIVIL PENALTIES.

THE CONTRACTOR IS TO VERIFY ALL DIMENSIONS AND CONDITIONS ON THE PROJECT AND TO REPORT ANY DISCREPANCIES TO THE TIM HORTONS REPRESENTATIVE PRIOR TO COMMENCING WORK. THESE DRAWINGS ARE NOT TO BE USED FOR CONSTRUCTION PURPOSES UNLESS INDICATED BY TIM HORTONS AS 'ISSUED FOR CONSTRUCTION'.



K. PAUL ARCHITECT INC.
TORONTO • VANCOUVER

2660 Sherwood Heights Dr. Suite 200, Oakville, Ontario, L6J 7Y8
www.kpaularchitect.com
(905)337-9800 fax (905)337-1986

Project



Store Type
WELCOME MODEL 1580

Location
20 ST. PAUL'S CRESCENT
BARRIE, ONTARIO

Drawing Title
EXTERIOR ELEVATIONS

Drawn	LM	Checked	DR
Scale	1:50	Date	NOVEMBER 2019
Project No.	1903149	Drawing No.	A5

EXTERIOR ELEVATION NOTES

- PREFINISHED METAL FLASHING. REFER TO EXTERIOR FINISH SCHEDULE.
- FACE BRICK - MODULAR SIZE. REFER TO EXTERIOR FINISH SCHEDULE.
- G.C. TO SUPPLY AND INSTALL NEW EXTRUDED ALUMINUM SIDING WITH 12mm REVEALS C/W PRE-FINISHED ALUMINUM TRIM PIECES TO MATCH. REFER TO EXTERIOR FINISH SCHEDULE FOR PATTERN, SIZE & COLOUR.
- SOLDIER COURSE BRICK - MODULAR SIZE. REFER TO EXTERIOR FINISH SCHEDULE.
- ANODIZED ALUMINUM FRAMES.
- POURED CONCRETE FOUNDATION. REFER TO STRUCTURAL DRAWINGS FOR SIZE & DEPTH.
- 914mm (36") HIGH ILLUMINATED SIGN MOUNTED ON EXTERIOR WALL CLADDING BY SIGN COMPANY. G.C. TO ENSURE TO PROVIDE ADEQUATE WOOD BLOCKING/BACKING FOR SIGNAGE SUPPORT (COORDINATE WITH SIGN MANUFACTURER). G.C. TO COORDINATE WITH SIGN INSTALLER TO USE VHM DRILL BIT WHILE DRILLING FOR ELECTRICAL FEED LINES AND SIGNAGE FASTENERS (AT LOCATION OF PORCELAIN TILE) AND HOLES HAVE TO BE DRILLED LARGER THAN FASTENERS.
- ROOF ACCESS LADDER.
- N/A.
- 150mm DIA. METAL BOLLARD FILL W/ CONCRETE C/W BOLLARD COVER.
- DRIVE-THRU WINDOW WITH INSULATED PANEL.
- N/A.
- OVERFLOW SCUPPER.
- CONCRETE SIDEWALK (BY OTHERS). REFER TO SITE PLAN.
- EXTERIOR RECYCLING UNIT SUPPLIED BY TDL GROUP CORP. & INSTALLED BY G.C.
- G.C. TO SUPPLY AND INSTALL NEW PORCELAIN TILE.
- HWT CONCENTRIC VENT TO BE INSTALLED PRIOR TO SIDING.
- LOCATION OF GAS METER.
- ANODIZED ALUMINUM (EXTERIOR STOREFRONT SWING DOORS). G.C. TO INSTALL NEW 'HOCKEY STICK DOOR HANDLES' ON PULL SIDE (SUPPLIED BY TDL GROUP LTD) REFER TO WINDOW SCHEDULE ON SHEET A11 & EXTERIOR FINISH SCHEDULE FOR PAINT FINISH.
- LOCATION OF REMOTE SUCTION FOR GREASE INTERCEPTOR.
- BARRIER FREE DOOR OPERATOR SWITCH LOCATION. COORDINATE LOCATION OF AUTOMATIC DOOR OPERATORS WITH SITE PLAN AND TDL GROUP CORP.
- CAMP BOX.
- PROVIDE & INSTALL THREE (3) "NO-SMOKING WITHIN 7.5m" SIGNAGE AT ENTRIES/EXITS. CONFIRM SIZE, COLOUR & REQUIREMENTS AS PER SPECIFIC LOCAL CODES AND BYLAWS.
- 150mm METAL BOLLARD FILLED W/ CONCRETE. REFER TO EXTERIOR FINISH SCHEDULE.
- G.C. TO PROVIDE & INSTALL STAINLESS STEEL KICK PLATE (AT BOTTOM PANELS) ON BOTH SIDES FOR MAIN ENTRANCE DOORS, VESTIBULE DOORS & EXIT DOORS.
- PREFABRICATED CANOPY C/W INTEGRATED LIGHTING. TDL TO SUPPLY AND G.C. TO INSTALL FROM APPROVED VENDOR "STEELEART" G.C. TO COORDINATE INSTALLATION OF CANOPY (ELECTRICAL CONDUIT HOOKUP) PRIOR TO VAPOUR BARRIER INSTALLATION. PROVIDE EXTERIOR TYPE ACCESS PANEL ON INTERIOR OF BUILDING IF REQUIRED AS PER ON SITE REQUIREMENTS (TBD).
- WALL SCOPPE LIGHTING.
- WALL PACK.
- G.C. TO PROVIDE CONCRETE CURB ALONG DRIVE-THRU LANE. CURB TO PROJECT 200mm FROM FACE OF PORCELAIN TILE AND LENGTH OF CURB IS EXTENT OF FEATURE WALL.
- EXTERIOR POP FRAME ITEM #201. SUPPLIED BY TDL GROUP AND INSTALLED BY G.C.
- TPO ROOF MEMBRANE ON BACK OF PARAPET WALLS.
- N/A.
- N/A.
- G.C. TO PROVIDE MIN. 13mm MOVEMENT JOINT (CRITICAL) FILLED WITH FLEXIBLE SEALANT AT EVERY 2400mm - 3600mm IN BOTH DIRECTIONS AS PER TTMAC DETAIL 301M. FLEXIBLE SEALANT COLOUR TO MATCH MORTAR JOINT "CHARCOAL".
- G.C. TO PROVIDE CONTROL JOINT AS INDICATED COMPLETE WITH BACKING ROD & SEALANT (SEALANT COLOUR TO MATCH COLOUR OF MORTAR).
- G.C. TO INSTALL NEW C-CHANNEL C/W INTEGRATED PERIMETER LIGHTING ABOVE SOLDIER COURSE. G.C. TO PROVIDE POWER AND JUNCTION BOX FOR ELECTRICAL WIRING. REFER TO EXTERIOR FINISH SCHEDULE. G.C. TO COORDINATE DETAILS WITH MANUFACTURER & PROVIDE SUPPORT SYSTEM AS REQUIRED.

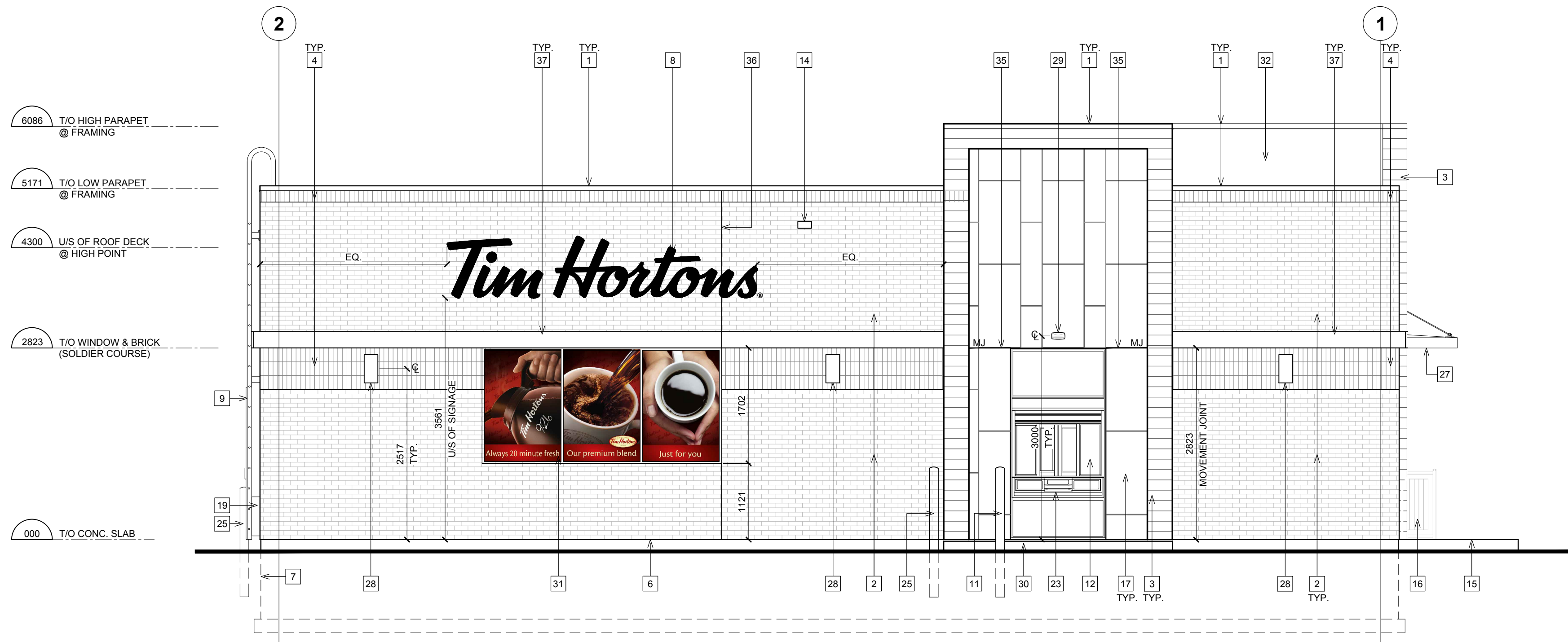
CANOPY SCHEDULE

TYPE	SIZE	QUANTITY
CANOPY TYPE #1	4876mm x 914mm	2

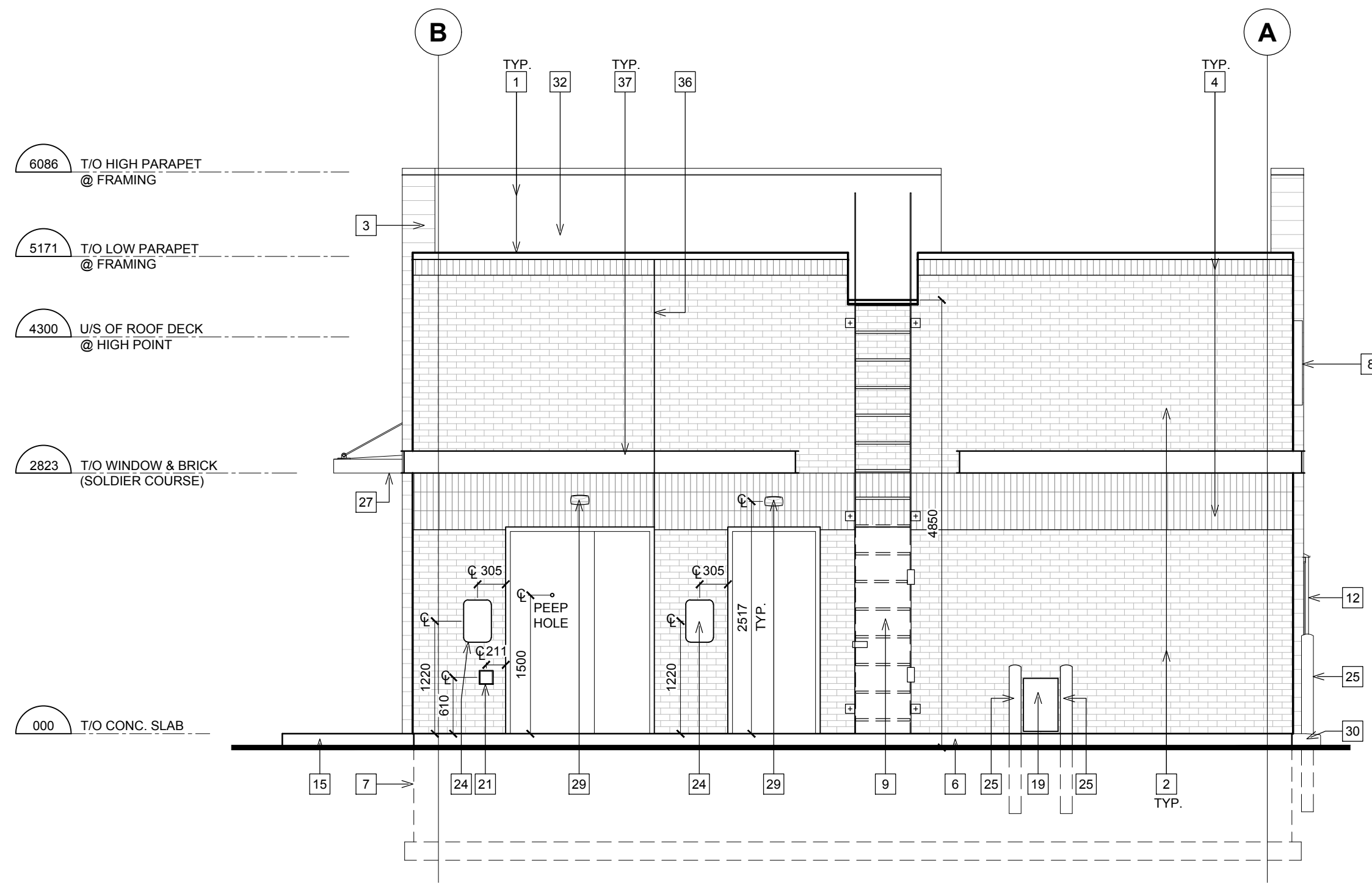
EXTERIOR FINISH SCHEDULE

PRODUCT	MANUF.	TYPE & COLOUR
PREFINISHED METAL FLASHING	FIRESTONE	FLASHING AT SIDING PARAPET: COLOUR: 'MATTE BLACK' FLASHING AT BRICK PARAPET: COLOUR: 'SLATE GRAY' FLASHING AT FOUNDATION: COLOUR: 'BLACK ANODIZED' ALL FLASHING AT WINDOWS IS TO BE BLACK ANODIZED.
ANODIZED ALUMINUM (WINDOW FRAMES, DOOR FRAMES, VESTIBULE FRAMES & DOORS, EXIT ONLY DOOR)	ALUMICOR LIMITED	ALUMINUM FINISH (CLASS 1, 7 MILS MINIMUM) ALUMINUM BLACK ANODIZED BY ALUMICOR. CAULKING BETWEEN WINDOW FRAMES/DOOR FRAMES & EXTERIOR CLADDING COLOUR TO MATCH WINDOW FRAMES (TREMCO DYMONIC).
ANODIZED ALUMINUM (EXTERIOR STOREFRONT SWING DOORS ONLY)	ALUMICOR LIMITED	7700 THERMAPORTE THERMALLY BROKEN DOOR SYSTEM/800A WIDE STILE WITH NO MID RAIL) FINISH TO BE PANTONE 186C RED. HINGES AND DOOR PULL/PUSH TO BE BLACK
ANODIZED ALUMINUM (DRIVE-THRU WINDOW)	NABCO OR HORTON AUTOMATICS	NABCO CONVENIENCE WINDOW GT1505 OR HORTON AUTOMATICS 8200TSX COLOUR: 'OHARE RED' (WINDOW) & BLACK ANODIZED (TOP & BOTTOM PANEL). (CLASS 1, 7 MILS MINIMUM) ALUMINUM
PORCELAIN TILE	STONEPEAK	SERIES: ASTER. COLOUR: VENUS. SIZE: 600mm (W) x 1200mm (H) & 305mm (W) x 1220mm (H). PATTERN: VERTICAL RUNNING BOND, FINISH: HONED, GROUT: 10mm MAPEI ULTRACOLOR PLUS FA. GROUT COLOUR: 47 CHARCOAL. FLEXIBLE SEALANT (AT MOVEMENT JOINTS): 13mm MAPEI MAPESIL T. SILICONE SEALANT. FLEXIBLE SEALANT COLOUR: S3 WARM GRAY.
CUSTOM FINISHED EXTRUDED ALUMINUM SIDING	KNOTWOOD	SIZE: 6" NOMINAL SPACING WITH 1/2" REVEAL JOINTS. COLOUR: 'BLACK ASH' (G.C. TO TOUCH UP IN FIELD). PATTERN: STACKED AT VERTICAL BUMP OUTS AND STAGGERED AT HORIZONTAL BUMP OUTS. NOTE: SIDING TO BE INSTALLED WITH KNOTWOOD ALUMINUM TRIM PIECES, STARTER CLIPS & JOINTS (COLOUR: MATCH BLACK ASH)
BRICK	ENDICOTT CLAY PRODUCTS	MODULAR FACE BRICK 94mm D x 94mm H x 194mm L. COLOUR: AUTUMN SANDS. VELOUR FINISH. RUNNING BOND. MORTAR: 677-MESQUITE
BRICK (ACCENT)	ENDICOTT CLAY PRODUCTS	MODULAR FACE BRICK 94mm D x 94mm H x 194mm L. COLOUR: AUTUMN SANDS. VELOUR FINISH. SOLDIER COURSE. MORTAR: 677-MESQUITE
PAINT - BOLLARDS	SHERWIN WILLIAMS	COLOUR: #SW 6903 'CHEERFUL'
BLACK TURNBUCKLE CANOPIES	STEEL ART SIGNS	BLACK TURNBUCKLE CANOPIES.
DECORATIVE METAL BAND	TBD	COLOUR TO MATCH 'BLACK ASH' ALUMINUM SIDING.
WALLPACK	REFER TO ELEC. DRAWINGS	DARK GRAY TEXTURED PAINT
C - CHANNEL PERIMETER (WITH OR WITHOUT INTEGRATED LIGHTING)	LEKTRON BRANDING SOLUTIONS	FLEXIBLE LED 'LUMISTRAP' LED SIMULATED NEON - 4000K

TIM HORTONS WELCOME MODEL 1580, 20 ST. PAUL'S CRESCENT, BARRIE, ONTARIO. ISSUED FOR SPA (NOVEMBER 04, 2019) TDL NO. xxxxx



1 NORTH ELEVATION
A5.1 SCALE: 1:50



2 EAST ELEVATION
A5.1 SCALE: 1:50

SYMBOL LEGEND

1	NOTE REFERENCE REFER TO ELEVATION NOTES
CT#	CANOPY TYPE

GENERAL NOTES

- REFER TO EXTERIOR FINISH SCHEDULE FOR CAULKING COLOUR.
- THE CONTRACTOR SHALL BECOME FAMILIAR WITH AND FOLLOW ALL DRAWINGS AND SPECIFICATIONS.

ISSUE TABLE

No.	Date (mm/dd/yy)	Description
01	11-04-19	ISSUED FOR SPA

REVISIONS

No.	Date	Description
-----	------	-------------

DRAWINGS REVISED AS PER DESIGN BULLETIN

No.	Date	Description
01	11-04-19	REVISED AS PER DB #9-19

NOT FOR CONSTRUCTION



THIS DRAWING IS OWNED BY OR LICENSED FOR USE BY TIM HORTONS (OR ITS AFFILIATED OR RELATED COMPANIES) AND MAY NOT BE REPRODUCED, USED, DOWNLOADED, DISSEMINATED, PUBLISHED, OR TRANSFERRED IN ANY FORM OR BY ANY MEANS, EXCEPT WITH THE PRIOR WRITTEN CONSENT OF TIM HORTONS. COPYRIGHT INFRINGEMENT IS A VIOLATION OF FEDERAL LAW SUBJECT TO CRIMINAL AND CIVIL PENALTIES.



2660 Sherwood Heights Dr. Suite 200, Oakville, Ontario, L6J 7Y8
www.kpaularchitect.com
(905)337-9800 fax (905)337-1986



Store Type: WELCOME MODEL 1580
Location: 20 ST. PAUL'S CRESCENT
BARRIE, ONTARIO

Drawing Title

EXTERIOR ELEVATIONS

Drawn: LM	Checked: DR
Scale: 1:50	Date: NOVEMBER 2019
Project No.: 1903149	Drawing No.: A5.1

EXTERIOR ELEVATION NOTES

- PREFINISHED METAL FLASHING. REFER TO EXTERIOR FINISH SCHEDULE.
- FACE BRICK - MODULAR SIZE. REFER TO EXTERIOR FINISH SCHEDULE.
- G.C. TO SUPPLY AND INSTALL NEW EXTRUDED ALUMINUM SIDING WITH 12mm REVEALS C/W PRE-FINISHED ALUMINUM TRIM PIECES TO MATCH. REFER TO EXTERIOR FINISH SCHEDULE FOR PATTERN, SIZE & COLOUR.
- SOLDIER COURSE BRICK - MODULAR SIZE. REFER TO EXTERIOR FINISH SCHEDULE.
- ANODIZED ALUMINUM FRAMES.
- EXPOSED FOUNDATION TO BE PARGED & FREE OF IMPERFECTIONS.
- POURED CONCRETE FOUNDATION. REFER TO STRUCTURAL DRAWINGS FOR SIZE & DEPTH.
- 914mm (36") HIGH ILLUMINATED SIGN MOUNTED ON EXTERIOR WALL CLADDING BY SIGN COMPANY. G.C. TO ENSURE TO PROVIDE ADEQUATE WOOD BLOCKING/BACKING FOR SIGNAGE SUPPORT (COORDINATE WITH SIGN MANUFACTURER). G.C. TO COORDINATE WITH SIGN INSTALLER TO USE VHM DRILL BIT WHILE DRILLING FOR ELECTRICAL FEED LINES AND SIGNAGE FASTENERS (AT LOCATION OF PORCELAIN TILE) AND HOLES HAVE TO BE DRILLED LARGER THAN FASTENERS.
- ROOF ACCESS LADDER.
- N/A.
- 150mm DIA. METAL BOLLARD FILL W/ CONCRETE C/W BOLLARD COVER.
- DRIVE-THRU WINDOW WITH INSULATED PANEL.
- N/A.
- OVERFLOW SCUPPER.
- CONCRETE SIDEWALK (BY OTHERS). REFER TO SITE PLAN.
- EXTERIOR RECYCLING UNIT SUPPLIED BY TDL GROUP CORP. & INSTALLED BY G.C.
- G.C. TO SUPPLY AND INSTALL NEW PORCELAIN TILE.
- HWT CONCENTRIC VENT TO BE INSTALLED PRIOR TO SIDING.
- LOCATION OF GAS METER.
- ANODIZED ALUMINUM (EXTERIOR STOREFRONT SWING DOORS). G.C. TO INSTALL NEW 'HOCKEY STICK DOOR HANDLES' ON PULL SIDE (SUPPLIED BY TDL GROUP LTD) REFER TO WINDOW SCHEDULE ON SHEET A11 & EXTERIOR FINISH SCHEDULE FOR PAINT FINISH.
- LOCATION OF REMOTE SUCTION FOR GREASE INTERCEPTOR.
- BARRIER FREE DOOR OPERATOR SWITCH LOCATION. COORDINATE LOCATION OF AUTOMATIC DOOR OPERATORS WITH SITE PLAN AND TDL GROUP CORP.
- CAMP BOX.
- PROVIDE & INSTALL THREE (3) "NO-SMOKING WITHIN 7.5m" SIGNAGE AT ENTRIES/EXITS. CONFIRM SIZE, COLOUR & REQUIREMENTS AS PER SPECIFIC LOCAL CODES AND BYLAWS.
- 150mm METAL BOLLARD FILLED W/ CONCRETE. REFER TO EXTERIOR FINISH SCHEDULE.
- G.C. TO PROVIDE & INSTALL STAINLESS STEEL KICK PLATE (AT BOTTOM PANELS) ON BOTH SIDES FOR MAIN ENTRANCE DOORS, VESTIBULE DOORS & EXIT DOORS.
- PREFABRICATED CANOPY C/W INTEGRATED LIGHTING. TDL TO SUPPLY AND G.C. TO INSTALL FROM APPROVED VENDOR "STEELART" G.C. TO COORDINATE INSTALLATION OF CANOPY (ELECTRICAL CONDUIT HOOKUP) PRIOR TO VAPOUR BARRIER INSTALLATION. PROVIDE EXTERIOR TYPE ACCESS PANEL ON INTERIOR OF BUILDING IF REQUIRED AS PER ON SITE REQUIREMENTS (TBD).
- WALL SCANCE LIGHTING.
- WALL PACK.
- G.C. TO PROVIDE CONCRETE CURB ALONG DRIVE-THRU LANE. CURB TO PROJECT 200mm FROM FACE OF PORCELAIN TILE AND LENGTH OF CURB IS EXTENT OF FEATURE WALL.
- EXTERIOR POP FRAME ITEM #201. SUPPLIED BY TDL GROUP AND INSTALLED BY G.C.
- TPO ROOF MEMBRANE ON BACK OF PARAPET WALLS.
- N/A.
- N/A.
- G.C. TO PROVIDE MIN. 13mm MOVEMENT JOINT (CRITICAL) FILLED WITH FLEXIBLE SEALANT AT EVERY 2400mm - 3600mm IN BOTH DIRECTIONS AS PER TTMAC DETAIL 301M. FLEXIBLE SEALANT COLOUR TO MATCH MORTAR JOINT "CHARCOAL".
- G.C. TO PROVIDE CONTROL JOINT AS INDICATED COMPLETE WITH BACKING ROD & SEALANT (SEALANT COLOUR TO MATCH COLOUR OF MORTAR).
- G.C. TO INSTALL NEW C-CHANNEL C/W INTEGRATED PERIMETER LIGHTING ABOVE SOLDIER COURSE. G.C. TO PROVIDE POWER AND JUNCTION BOX FOR ELECTRICAL WIRING. REFER TO EXTERIOR FINISH SCHEDULE. G.C. TO COORDINATE DETAILS WITH MANUFACTURER & PROVIDE SUPPORT SYSTEM AS REQUIRED.

CANOPY SCHEDULE

TYPE	SIZE	QUANTITY
CANOPY TYPE #1	4876mm x 914mm	2

EXTERIOR FINISH SCHEDULE

PRODUCT	MANUF.	TYPE & COLOUR
PREFINISHED METAL FLASHING	FIRESTONE	FLASHING AT SIDING PARAPET : COLOUR: 'MATTE BLACK' FLASHING AT BRICK PARAPET : COLOUR: 'SLATE GRAY' FLASHING AT FOUNDATION: COLOUR: BLACK ANODIZED ALL FLASHING AT WINDOWS IS TO BE BLACK ANODIZED.
ANODIZED ALUMINUM (WINDOW FRAMES, DOOR FRAMES, VESTIBULE FRAMES & DOORS, EXIT ONLY DOOR)	ALUMICOR LIMITED	ALUMINUM FINISH (CLASS 1, 7 MILS MINIMUM) ALUMINUM BLACK ANODIZED BY ALUMICOR. CAULKING BETWEEN WINDOW FRAMES/DOOR FRAMES & EXTERIOR CLADDING COLOUR TO MATCH WINDOW FRAMES (TREMCO DYMONIC).
ANODIZED ALUMINUM (EXTERIOR STOREFRONT SWING DOORS ONLY)	ALUMICOR LIMITED	7700 THERMAPORTE THERMALLY BROKEN DOOR SYSTEM/800A WIDE STILE WITH NO MID RAIL) FINISH TO BE PANTONE 186C RED, HINGES AND DOOR PULL/PUSH TO BE BLACK
ANODIZED ALUMINUM (DRIVE-THRU WINDOW)	NABCO OR HORTON AUTOMATICS	NABCO CONVENIENCE WINDOW GT1505 OR HORTON AUTOMATICS 8200TSX COLOUR: 'OHARE RED' (WINDOW) & BLACK ANODIZED (TOP & BOTTOM PANEL) - (CLASS 1, 7 MILS MINIMUM) ALUMINUM
PORCELAIN TILE	STONEPEAK	SERIES: ASTER. COLOUR: VENUS. SIZE: 600mm (W) x 1200mm (H) & 305mm (W) x 1220mm (H). PATTERN: VERTICAL RUNNING BOND, FINISH: HONED, GROUT: 10mm MAPEI ULTRACOLOR PLUS FA. GROUT COLOUR: 47 CHARCOAL. FLEXIBLE SEALANT (AT MOVEMENT JOINTS): 13mm MAPEI MAPESIL T-SILICONE SEALANT. FLEXIBLE SEALANT COLOUR: S3 WARM GRAY.
CUSTOM FINISHED EXTRUDED ALUMINUM SIDING	KNOTWOOD	SIZE: 6" NOMINAL SPACING WITH 1/2" REVEAL JOINTS. COLOUR: 'BLACK ASH' (G.C. TO TOUCH UP IN FIELD). PATTERN: STACKED AT VERTICAL BUMP OUTS AND STAGGERED AT HORIZONTAL BUMP OUTS. NOTE: SIDING TO BE INSTALLED WITH KNOTWOOD ALUMINUM TRIM PIECES, STARTER CLIPS & JOINTS (COLOUR: MATCH 'BLACK ASH')
BRICK	ENDICOTT CLAY PRODUCTS	MODULAR FACE BRICK 94mm D x 94mm H x 194mm L. COLOUR: AUTUMN SANDS. VELOUR FINISH. RUNNING BOND. MORTAR: 677-MESQUITE
BRICK (ACCENT)	ENDICOTT CLAY PRODUCTS	MODULAR FACE BRICK 94mm D x 94mm H x 194mm L. COLOUR: AUTUMN SANDS. VELOUR FINISH. SOLDIER COURSE. MORTAR: 677-MESQUITE
PAINT - BOLLARDS	SHERWIN WILLIAMS	COLOUR: #SW 6903 'CHEERFUL'
BLACK TURNBUCKLE CANOPIES	STEEL ART SIGNS	BLACK TURNBUCKLE CANOPIES.
DECORATIVE METAL BAND	TBD	COLOUR TO MATCH 'BLACK ASH' ALUMINUM SIDING.
WALLPACK	REFER TO ELEC. DRAWINGS	DARK GRAY TEXTURED PAINT
C - CHANNEL PERIMETER (WITH OR WITHOUT INTEGRATED LIGHTING)	LEKTRON BRANDING SOLUTIONS	FLEXIBLE LED 'LUMISTRAP' LED SIMULATED NEON - 4000K

TIM HORTONS WELCOME MODEL 1580, 20 ST. PAUL'S CRESCENT, BARRIE, ONTARIO. ISSUED FOR SPA (NOVEMBER 04, 2019) TDL NO. : xxxxx