

**GENERAL NOTES:**

1. ALL WORKMANSHIP TO THE STANDARDS OF THE LANDSCAPE ONTARIO HORTICULTURAL TRADES ASSOCIATION AND THE CANADIAN LANDSCAPE STANDARDS.
2. ALL PLANT MATERIAL SHALL BE STAKED FOR LOCATION BY LANDSCAPE ARCHITECT AND CONTRACTOR JOINTLY.
3. BACKFILL IS TO CONSIST OF SOIL NATIVE TO THE SITE OR GENERAL SOIL TYPE/CLASS NATIVE TO THE SITE. SOIL AMENDMENT MAY BE REQUIRED BASED ON SOURCE OF IMPORTED OR EXISTING SITE QUALITY OF TOPSOIL. PROVIDE NUTRIENT ANALYSIS OF TOPSOIL TO BE USED FOR LANDSCAPE PURPOSES IN ORDER TO DETERMINE SOIL AMENDMENT REQUIREMENTS.
4. ALL TREES SHALL HAVE AN EARTH SAUCER AT ITS BASE WITH A DIAMETER AS LARGE AS EXCAVATED AREA TO RETAIN WATER.
5. CONTRACTOR SHALL MAINTAIN ALL LANDSCAPE AREAS UNTIL OWNER'S ACCEPTANCE OF PROJECT.
6. UNLESS OTHERWISE STATED, ALL WORK SHALL CONFORM TO THE LANDSCAPE ONTARIO SPECIFICATIONS STANDARDS.
7. SPREAD MULCH TO A MINIMUM 75mm COMPACTED DEPTH ON ALL TREE PITS AND PLANTING BEDS.
8. STAKING OF TREES SHALL BE AS PER DETAIL DRAWINGS PROVIDED. ALTERNATIVE METHODS MAY BE ACCEPTABLE WITH THE APPROVAL OF THE LANDSCAPE ARCHITECT PRIOR TO INSTALLATION.
9. REPORT ALL DISCREPANCIES IN WRITING TO THE LANDSCAPE ARCHITECT.
10. CONTRACTOR TO LOCATE ALL UNDERGROUND UTILITIES.
11. PLANTING MAY BE ADJUSTED TO SUIT LOCATIONS OF SITE UTILITY STRUCTURES/SERVICES AND DRIVEWAYS.
12. SUBMIT A WRITTEN GUARANTEE TO THE EFFECT THAT ALL PLANTS ACCEPTED DURING THE PERIOD OF JANUARY 1ST TO JULY 15TH SHALL BE GUARANTEED UNTIL JULY 15TH THE SECOND FOLLOWING YEAR. PLANTS ACCEPTED DURING THE PERIOD OF JULY 15TH TO DECEMBER 31ST SHALL BE GUARANTEED FOR TWO YEARS FROM THE DATE OF ACCEPTANCE. THE GUARANTEE PERIODS LISTED ABOVE SHALL APPLY TO ALL "NURSERY GROWN" PLANTS AS PER CITY OF BARRIE'S TWO-YEAR MAINTENANCE REQUIREMENTS.
13. ALL MATERIALS TO BE APPROVED BY LANDSCAPE ARCHITECT PRIOR TO INSTALLATION.
14. CHECK AND VERIFY ALL DIMENSIONS AND QUANTITIES PRIOR TO COMMENCEMENT OF WORK. ANY DISCREPANCIES ARE TO BE REPORTED TO THE LANDSCAPE ARCHITECT. QUANTITIES NOTED WITHIN THE PLAN SUPERSEDE THOSE IN THE PLANT SCHEDULE. ANY SUBSTITUTIONS ARE TO BE APPROVED BY THE LANDSCAPE ARCHITECT.
15. PLANTING BEDS ARE TO BE MOUND A MINIMUM 75mm.
16. ALL GRADES NOT TO EXCEED 3:1 SLOPE.
17. SOD ANY AREAS MARKED WITH NURSERY SOD ON 150mm CLEAN TOPSOIL. FINE GRADE AND SOD ALL BOULEVARD AREAS TO MUNICIPAL SPECIFICATIONS AND REPAIR DAMAGE TO ADJACENT PROPERTIES, AS REQUIRED.
18. FINAL INSPECTION AND ACCEPTANCE OF PLANTING WORK SHALL COINCIDE WITH THE FINAL INSPECTION AND ACCEPTANCE OF ALL WORK INCLUDED IN THE CONTRACT.
19. AT THE TIME OF FINAL INSPECTION, ALL PLANTS SHALL BE IN A HEALTHY, VIGOROUS GROWING CONDITION AND PLANTED IN FULL ACCORDANCE WITH DRAWINGS AND CONDITIONS.
20. ALL PLANTINGS AND HARD LANDSCAPE FEATURES ARE TO BE STAKED OUT ON SITE AND APPROVED BY THE LANDSCAPE ARCHITECT & THE CITY PRIOR TO INSTALLATION. ANY DEVIATIONS FROM THE APPROVED LANDSCAPE PLANS REQUIRE PRIOR CITY APPROVAL.
21. SITE LIGHTING BY OTHERS.
22. BASE AND ENGINEERING INFORMATION PROVIDED BY PINESTONE ENGINEERING LIMITED.
23. IRRIGATION TO BE PROVIDED BY OTHERS.
24. SEE ENGINEERING DRAWINGS BY PINESTONE ENGINEERING LIMITED.

**UNIT AMENITIES:**

**BENCH (2) AND RECEPTACLE (1) (OR EQUIVALENT):**  
 PARIS MANUFACTURING LTD.  
 P.O. BOX 10, 21 SCOTT AVENUE,  
 PARIS, ONTARIO, N3L 3E5  
 PH: 519-442-3324

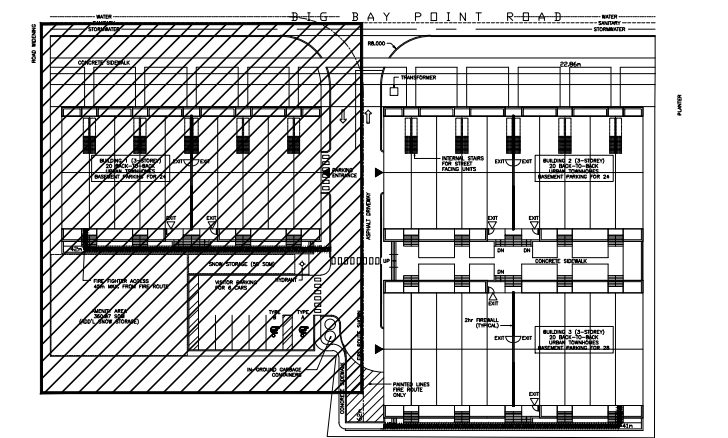
**BENCH MODEL: RSP9-6  
 RECEPTACLE MODEL: PSFT32**

**TREE GUARD:**  
 TORONTO FABRICATING & MFG. CO.  
 1021 RAISEVEEN RD  
 MISSISSAUGA, ONTARIO  
 L5E 1H2

**GAZEBO:**  
 LIMESTONE TRAIL (OR EQUIVALENT)  
 PH: 1-800-910-9223

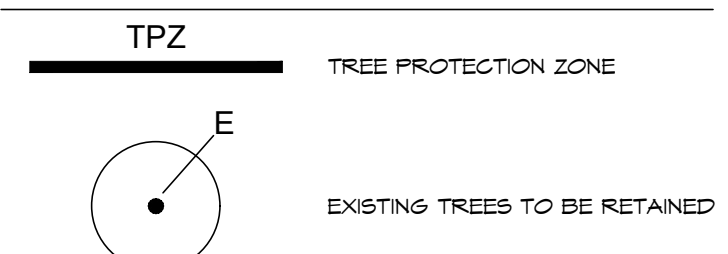
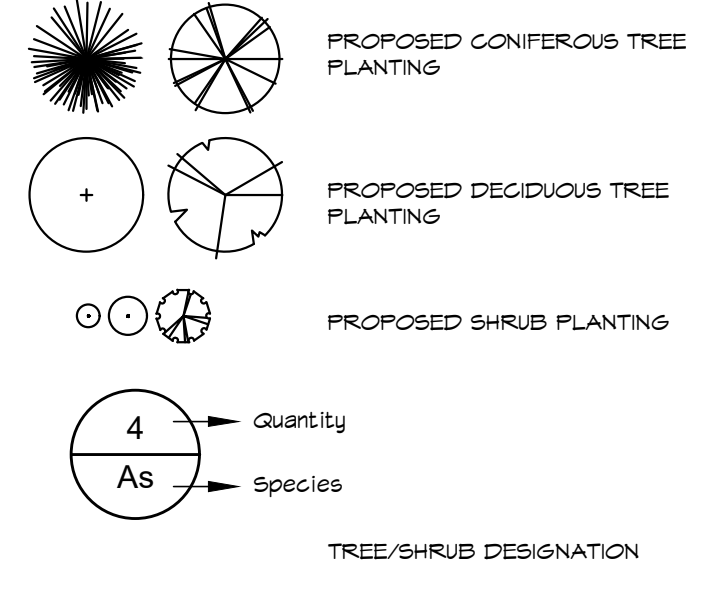
**NOTE:**  
 FINAL LOCATION OF ALL SITE AMENITIES TO BE CONFIRMED WITH THE LANDSCAPE ARCHITECT ON SITE PRIOR TO INSTALLATION.

**CAP LIMESTONE ROCKERY:**  
 QUANTITY: 4  
 LOCAL SUPPLIER (OR EQUIVALENT):  
 MAXWELL'S LANDSCAPE & MASONRY SUPPLY  
 4251 HWY 26 EAST  
 COLLINGWOOD, ONTARIO, L9Y 3Z1  
 PH: 705-445-9111  
 CELL: 705-441-4341

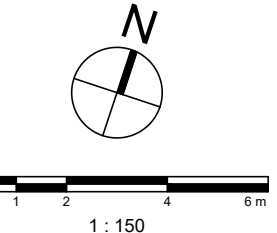
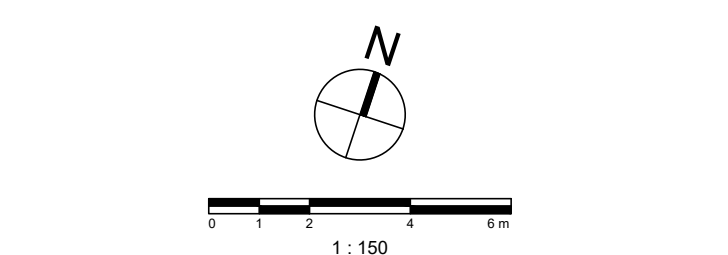


**Key Plan (n.t.s.)**

**Legend**



**NOTE:**  
 1. REFER TO TREE INVENTORY AND PRESERVATION PLAN REPORT BY KUNTZ FORESTRY CONSULTING INC. - SEPTEMBER 05, 2017.  
 2. REFER TO DETAILS B5D-1231, 1232 AND 1235 ON SHEET L-3.



**PROPOSED PLANTING MATERIAL**

KEY	QUANTITY	COMMON NAME	BOTANICAL NAME	SIZE	CONDITION	REMARKS	
<b>DECIDUOUS TREES</b>							
Ac	15	Serviceberry	<i>Amelanchier canadensis</i>	250cm ht.	Wire Basket	Multi-Stem	
Ah	4	Hedge Maple	<i>Acer campestre</i>	60mm cal.	Wire Basket		
St	9	Shademaster Locust	<i>Gleditsia triacanthos</i>	60mm cal.	Wire Basket		
Fy	3	Chanticleer Pear	<i>Pyrus calleryana 'diens Form'</i>	60mm cal.	Wire Basket		
Gr	1	Red Oak	<i>Quercus rubra</i>	60mm cal.	Wire Basket		
	31	TOTAL NUMBER OF TREES					
<b>CONIFEROUS TREES</b>							
Ps	4	White Pine	<i>Pinus strobus</i>	200cm ht.	Wire Basket		
To	7	White Cedar	<i>Thuja occidentalis</i>	300cm ht.	Wire Basket		
	11	TOTAL NUMBER OF TREES					
<b>SHRUBS</b>							
Ea	5	Winged Burning Bush	<i>Euonymus alatus</i>	100cm ht.	7 Gal. Pot		
Jc	49	Gold Coast Juniper	<i>Juniperus chinensis 'aurea'</i>	50cm ht.	3 Gal. Pot	No Substitution	
Js	13	Savin Juniper	<i>Juniperus sabina</i>	50cm ht.	3 Gal. Pot	No Substitution	
Sj	2	Upright Juniper	<i>Juniperus scopulorum 'Nichta Blue'</i>	150cm ht.	Wire Basket		
	69	TOTAL NUMBER OF SHRUBS					
<b>GROUND COVERS</b>							
Ho	69	Plantain Lily	<i>Hosta 'Madspan Blue'</i>	1 Gal.	Pot	55+ cm ht. - Blue Foliage	
Hoy	125	Plantain Lily	<i>Hosta 'Golden Tiara'</i>	1 Gal.	Pot	25+ cm ht. - Green/Yellow Foliage	
	194	TOTAL NUMBER OF GROUND COVERS					

**Hensel Design Group**  
 Advancing Sustainable Development Solutions

312 Peel St. Collingwood, Ontario, L9Y 3W4  
 Phone: 705-443-9344 Fax: 705-443-8434

PROJECT: **521, 527, 531 Big Bay Point Road Barrie, Ontario**

TITLE: **LANDSCAPE PLAN**

SEAL:

Scale: 1:150	DRAWING No.
Date: Oct 2017	<b>L-1</b>
CAD File: HDG-BBP-L1_R3	
Drawn by: C.M.	
Checked by: M.H.	
Job No.:	SHEET 1 OF 3

ALL DRAWINGS REMAIN THE PROPERTY OF THE LANDSCAPE ARCHITECT AND SHALL NOT BE REPRODUCED OR REUSED WITHOUT THE LANDSCAPE ARCHITECT'S WRITTEN PERMISSION.

THIS DRAWING SHALL NOT BE USED FOR CONSTRUCTION OR TENDER PURPOSES UNLESS SIGNED AND DATED BY MICHAEL J. HENSEL, OALA, OALA, LANDSCAPE ARCHITECT, HENSEL DESIGN GROUP INC., ONTARIO (705-443-9344)

Michael J. Hensel, OALA, OALA DATE