

LEGEND

- 10 Tree Identified for Preservation (GREEN)
- 11 Tree Identified for Removal due to Development (RED)
- 11 Tree Identified for Removal due to Condition (ORANGE)
- 11 Tree no longer exists
- TPZ Tree Preservation Zone Symbol
- Tree Preservation Fence Location
- Minimum Tree Preservation Zone Symbol
- Estimated Tree Location
- Surveyed Tree Location

Tree Inventory
Refer to Table 1 of report dated 6 January 2017, revised 08 March 2018 for the complete tree inventory. All trees 10 cm in diameter situated on subject property and on neighbouring property within vicinity of the proposed development were included in the tree inventory. There was one tree identified in the road allowance.

Tree Removal
The removal of 34 trees and one polygon would be required to accommodate the proposed development. An additional seven trees would be recommended for removal due to their condition.

Tree Preservation
The preservation of remaining trees would be possible with appropriate tree protection measures. Trees identified for preservation are indicated with GREEN labels. Tree protection measures will have to be implemented prior to demolition and construction. Delineate and required tree preservation fencing are indicated in MAGENTA. Refer to Tree Protection Plan Notes for preservation details.

Issue/Revisions	Date	By
1 Report Submission	6-Jan-17	SA
2 Report Revision	22-Feb-17	SA
3 Report Revision	31-Mar-17	SA
4 Report Revision	06-Sep-17	KH
5 Report Revision	20-Sep-17	KH
6 Report Revision	15-Dec-17	SA
7 Report Revision	15-Feb-18	SA
8 Report Revision	27-Feb-18	SA
9 Report Revision	08-Mar-18	SA

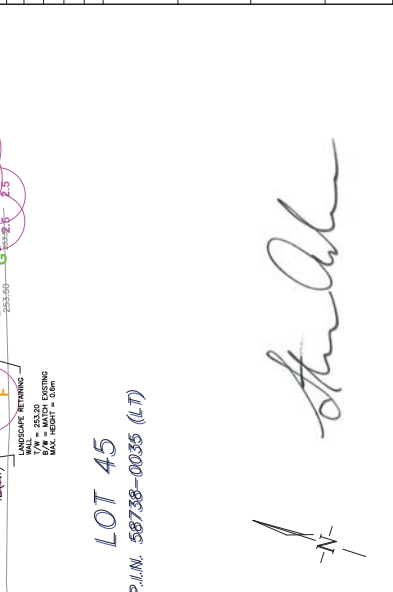
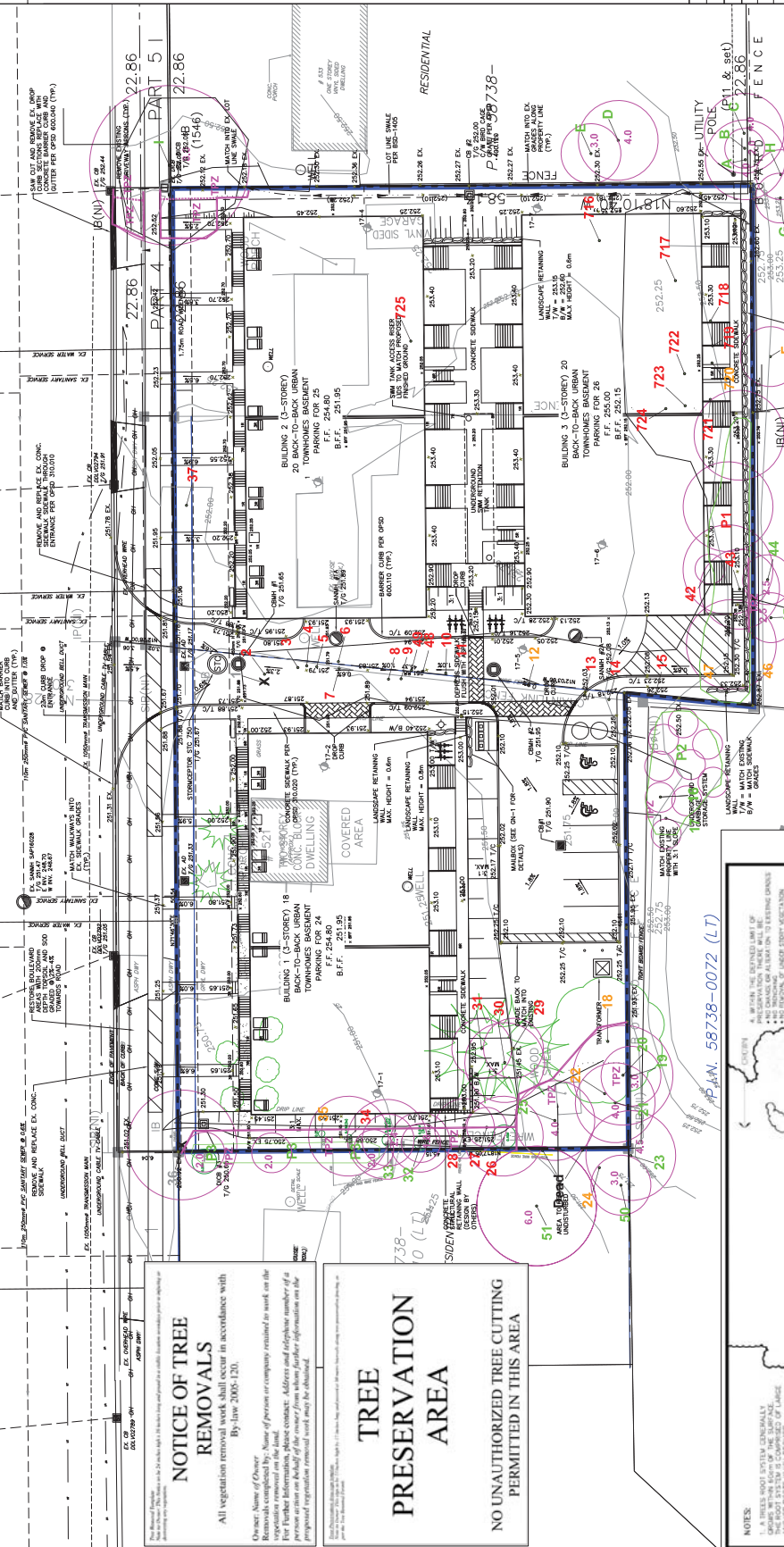
Base Data: GeoTOP Surveys and CADD, Innovative Planning Solutions
KUNTZ FORESTRY CONSULTING INC.
 148 Lakeshore Blvd. East
 Unit 100, Lakeshore, ON
 L4W 1M2
 Tel: 905.887.1171 Fax: 905.887.1172
 www.kuntzforestry.com

Innovative Planning Solutions
 150 Dunlop Street East, Suite 201
 Barrie, ON L4M 1B1

Property:
 521, 527, & 531 Big Bay Point Road
 Barrie, ON

Tree Inventory & Preservation Plan

Project	P1442	Figure	1
Date	6 January 2017		
Scale	1:200		



NOTICE OF TREE REMOVALS
 All vegetation removal work shall occur in accordance with By-law 2005-120.
 Owner: Name of Owner. Name of person or company retained to work on the site. For further information, please contact: Address and telephone number of a person who can provide further information on the proposed vegetation removal work must be obtained.

TREE PRESERVATION AREA
 NO UNAUTHORIZED TREE CUTTING PERMITTED IN THIS AREA

APPENDIX 2: CITY OF BARRIE STANDARD SPECIFICATIONS
 NOTES:
 1. A TREE ROOT SYSTEM GENERALLY EXTENDS TO THE PERIPHERY OF THE CROWN AND IS COMPOSED OF LARGE AND SMALL ROOTS. THE ROOTS OF LARGE TREES CAN BE EXTREMELY DEEP AND A NETWORK OF FEEDER ROOTS ARE APPROPRIATE FOR BOTH WATER AND NUTRIENT UPTAKE.
 2. THE FEEDER ROOTS OF TREES ARE EXTENSIVE AND CAN BE FOUND AT THE PERIPHERY OF THE CROWN AS THE 'ZOMBIE' ROOTS.
 3. WHEN CONSTRUCTION OPERATIONS ARE LIMITED TO ONE SIDE OF A TREE AND/OR THE TREE IS TO BE REMOVED, THE PRESERVATION SHALL BE DETERMINED BY THE TREE'S PRESENT SIZE AND HEALTH. THE TREE'S PRESENT SIZE AND HEALTH SHALL BE DETERMINED BY THE TREE'S TRUNK DIAMETER AND THE HEIGHT OF THE CROWN AS THE 'ZOMBIE' ROOTS.
 4. WHEN CONSTRUCTION OPERATIONS ARE LIMITED TO ONE SIDE OF A TREE AND/OR THE TREE IS TO BE REMOVED, THE PRESERVATION SHALL BE DETERMINED BY THE TREE'S PRESENT SIZE AND HEALTH. THE TREE'S PRESENT SIZE AND HEALTH SHALL BE DETERMINED BY THE TREE'S TRUNK DIAMETER AND THE HEIGHT OF THE CROWN AS THE 'ZOMBIE' ROOTS.
 5. THE TREE'S PRESENT SIZE AND HEALTH SHALL BE DETERMINED BY THE TREE'S TRUNK DIAMETER AND THE HEIGHT OF THE CROWN AS THE 'ZOMBIE' ROOTS.

NO.	REVISION	APPROVAL DATE	PREPARED BY	DATE

THIS STANDARD DOES NOT APPLY TO CITY RIGHTS OF WAY
 CITY OF BARRIE STANDARD
LIMIT OF TREE PRESERVATION FOR DEVELOPMENT APPROVALS