

Copyright of this drawing and design is reserved by the Designer. The drawing and all associated documents are an instrument of service by the Designer. The drawing and the information contained herein may not be reproduced in whole or in part without prior written permission of the Designer.

These Contract Documents are the property of the architect. The architect bears no responsibility for the interpretation of these documents by the Contractor. Upon written application the architect will provide written geographic clarification or supplementary information regarding the intent of the Contract Documents. The architect will review Shop Drawings submitted by the Contractor for design conformance only.

Drawings are not to be scaled for construction. Contractor to verify all existing conditions and dimensions required to perform the work and report any discrepancies with the Contract Documents to the architect before commencing work.

Positions of exposed or finished mechanical or electrical devices, fittings, and fixtures are indicated on architectural drawings. The locations shown on the architectural drawings govern over the Mechanical and Electrical drawings. Those items not clearly located will be located as directed by the architect.

These drawings are not to be used for construction unless noted below as "Issued for Construction".

All work to be carried out in conformance with the Code and bylaws of the authorities having jurisdiction.

The Designer of these plans and specifications gives no warranty or representation to any party about the constructability of the represented by them, all contractor or subcontractors must satisfy themselves when bidding and at all times that they can properly construct the work represented by these plans.

notes:

- 4 re-issued for site plan approval 11.11.19
- 3 re-issued for site plan approval 09.20.19
- 2 issued for co-ordination 07.23.19
- 1 issued for site plan approval 06.11.19

architectural team :

mark zwicker
bonnie douthright
narges nasr estahani

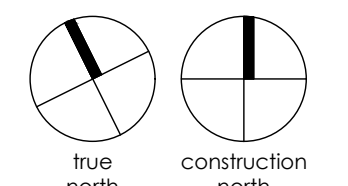


- planning: mhbc planning
- structural: jablonsky, ast & partners
- electrical: m.v. shore associates ltd.
- mechanical: m.v. shore associates ltd.
- landscape: job associates ltd.
- site services: valdor engineering inc.

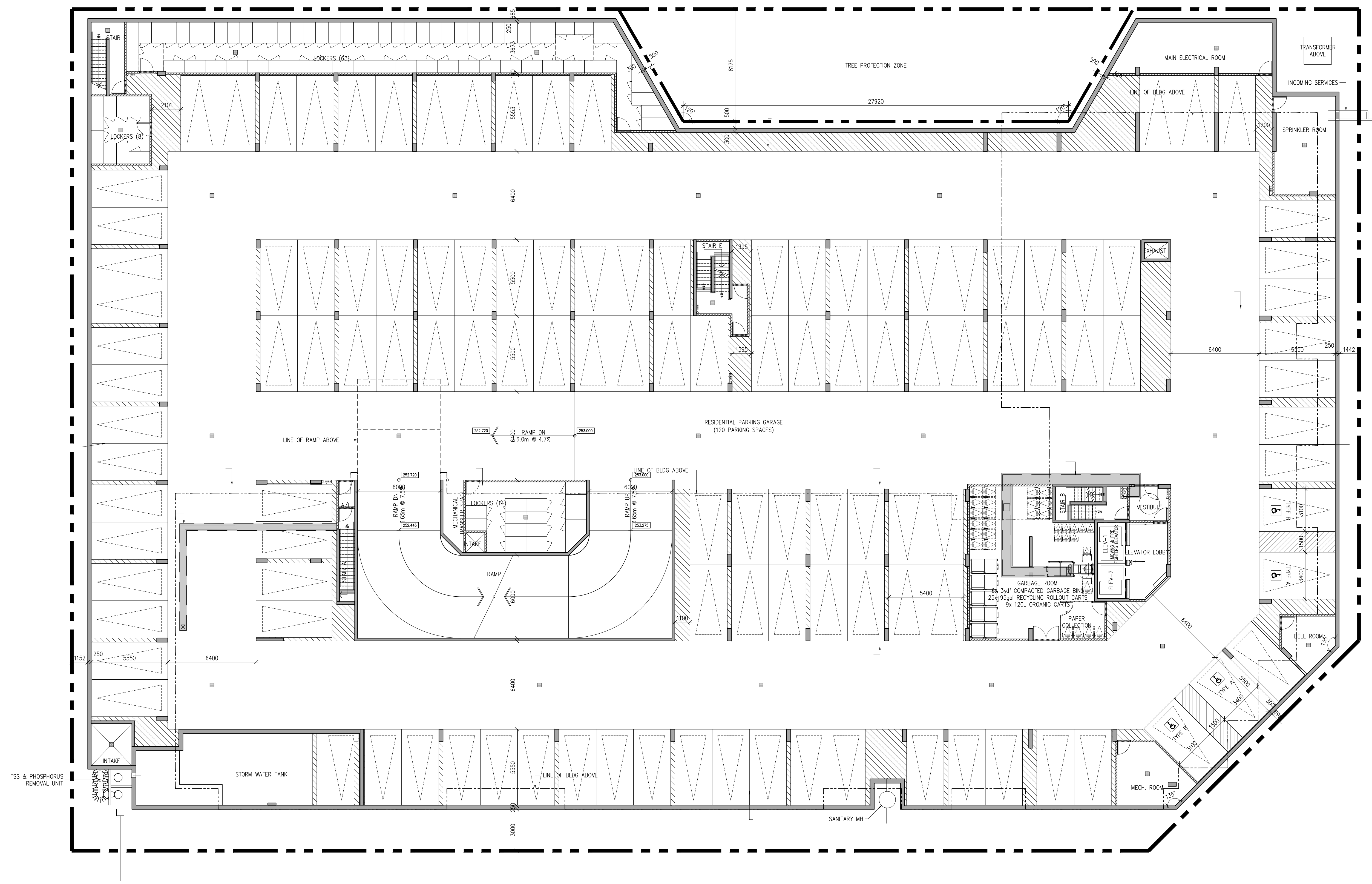
project:
681 yonge st
barrie, ontario

P1 plan

november.15.2019 date:
1:150 scale:
18-34 project:
bd drawn by:
drawing number:



A202



ASHFORD DRIVE

YONGE STREET