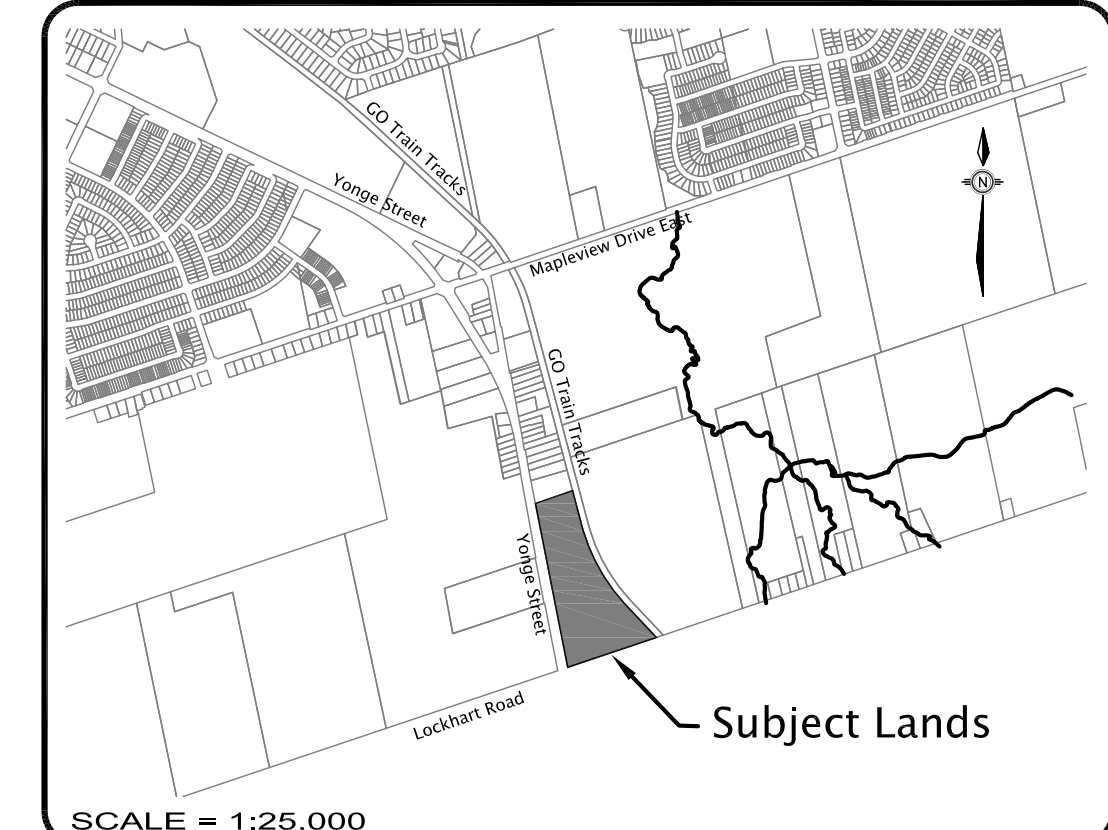


MEDIUM - HIGH DENSITY  
VACANT  
FUTURE RESIDENTIAL

ENVIRONMENTAL  
PROTECTION

RAILROAD

Environmental Protection

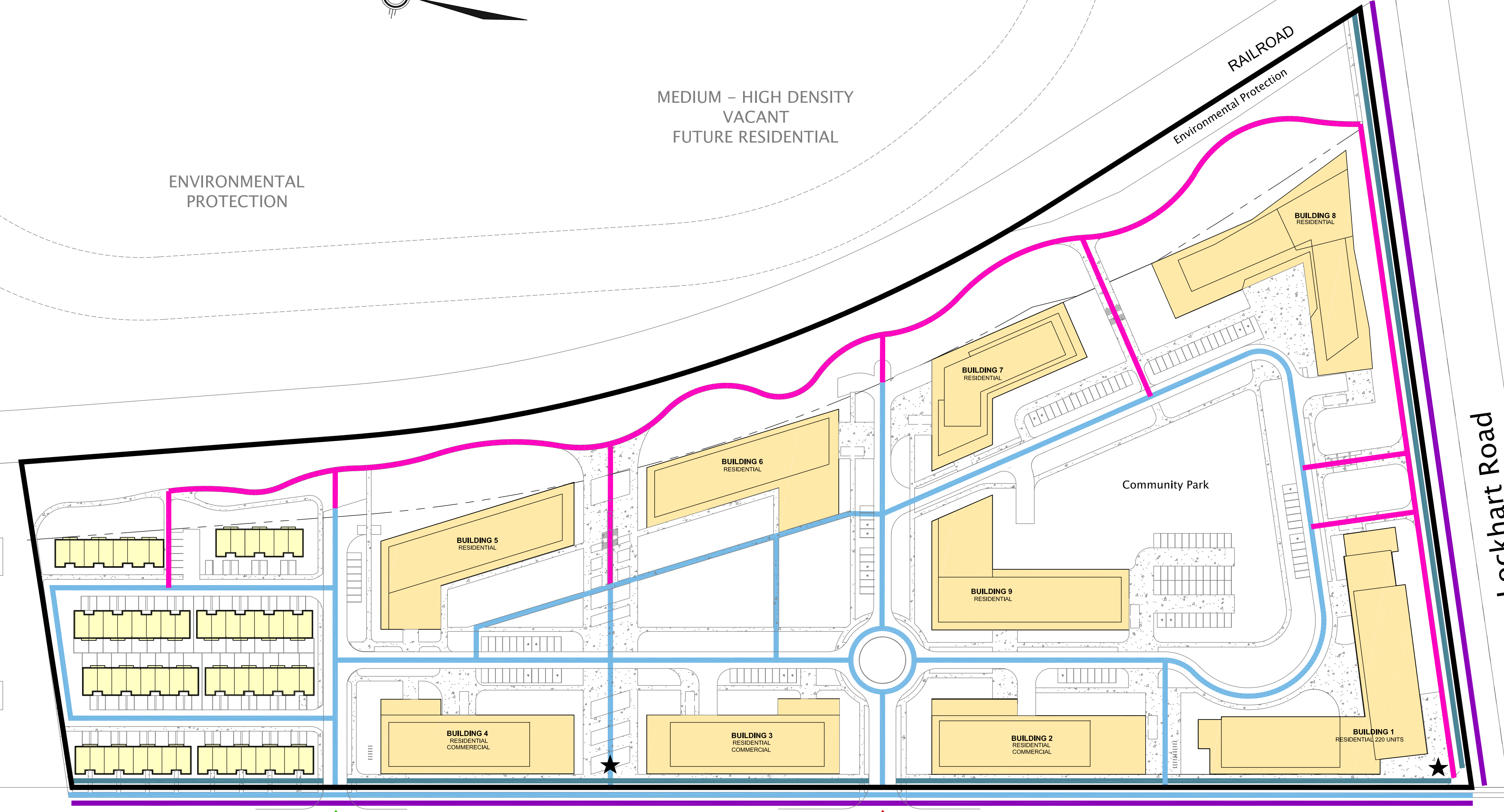


SCALE = 1:25,000

**Pedestrian Circulation Plan**  
Part of Lot 16, Concession 11  
Former Township of Innisfil,  
Now in the  
**City of Barrie 2020**

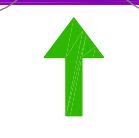
TOWN OF INNISFIL

Lockhart Road



EXISTING  
RESIDENTIAL

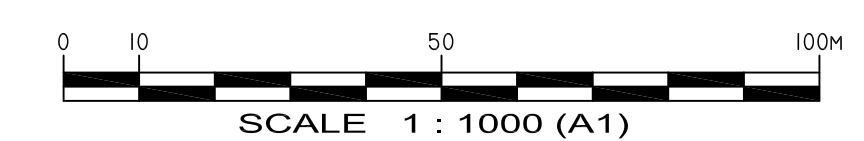
Community Park



Yonge Street

**Legend**

- Property Boundary
- Accessible Sidewalk
- Pathway/Trail
- Potential Transit Route
- Enhanced Streetscape
- Key Pedestrian Connection
- Primary Entrance
- Secondary Entrance



989 YONGE STREET, BARRIE, ONTARIO

PEDESTRIAN CIRCULATION PLAN



Date Issued: FEB. 21, 2020  
 Checked By: RD  
 Project No.: ASA-17068  
 Drawn By: m.c.r.  
 Drawing Name: ASA-17068-PedPlan-1.dwg



**ASA DEVELOPMENT INC.**  
 989 YONGE STREET  
 BARRIE, ONTARIO

C:\Planning Drawings\ASA-17068\Map\ASA-17068-Map.dwg Layout:PedPlan-1.dwg 5:04pm by marichards The Jones Consulting Group Ltd.