

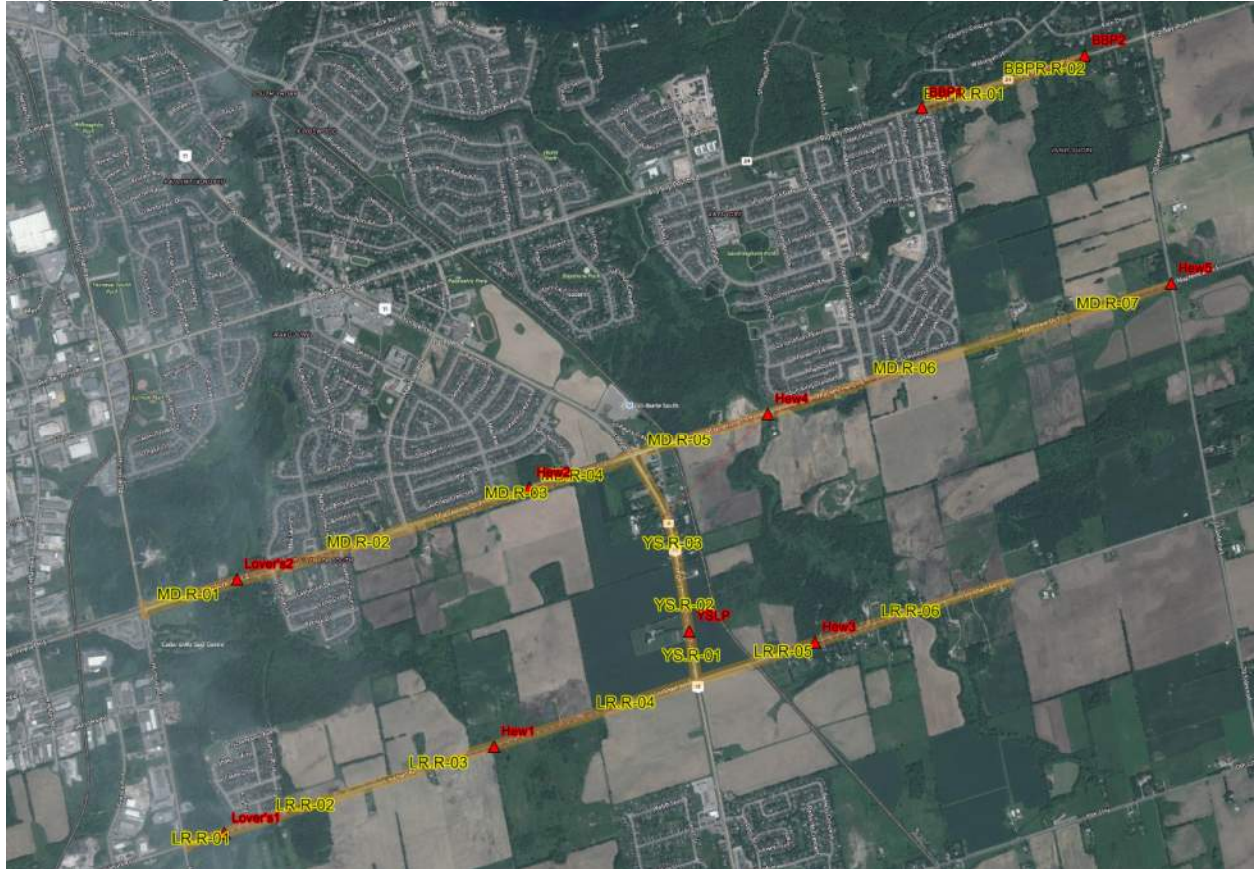
Appendix B: Hydrologic Output

Existing Hydrologic Model Schematic:



City of Barrie - Hewitt's Secondary Plan Area Environment Assessment (EA)
Drainage and Stormwater Management Study

Proposed Hydrologic Model Schematic:



Existing ROW Hydrologic Results – PCSWMM Model

[TITLE]

Hewitt's Secondary Plan Area (SPA) Road Improvements and Widening Environmental Assessment (EA) Drainage and Stormwater Management Study, Hatch, 2016.

Rainfall: Developed from RJ Burnside, Hewitt's SIS, 2016

Catchments delineated from the existing road profile.

Catchment Parameters: Developed from the existing ROW for peak flow and volume estimates.

Catchment widths set to the width of the ROW flowing to the outlet.

Modeling by: DJ

Checked by: WB

[OPTIONS]

```

;;Options      Value
;;-----
FLOW_UNITS    CMS
INFILTRATION  CURVE_NUMBER
FLOW_ROUTING  DYNWAVE
START_DATE    09/05/2014
START_TIME    00:00:00
REPORT_START_DATE 09/05/2014
REPORT_START_TIME 00:00:00
END_DATE      09/06/2014
END_TIME      00:00:00
SWEEP_START   01/01
SWEEP_END     12/31
DRY_DAYS      0
  
```

REPORT_STEP 00:00:05
 WET_STEP 00:00:05
 DRY_STEP 00:00:05
 ROUTING_STEP 5
 ALLOW_PONDING YES
 INERTIAL_DAMPING PARTIAL
 VARIABLE_STEP 0.75
 LENGTHENING_STEP 0
 MIN_SURFAREA 0
 NORMAL_FLOW_LIMITED BOTH
 SKIP_STEADY_STATE NO
 FORCE_MAIN_EQUATION H-W
 LINK_OFFSETS ELEVATION
 MIN_SLOPE 0
 MAX_TRIALS 8
 HEAD_TOLERANCE 0.0015
 SYS_FLOW_TOL 5
 LAT_FLOW_TOL 5
 MINIMUM_STEP 0.5
 THREADS 1

[EVAPORATION]

;;Type Parameters

;;-----

CONSTANT 0.0

DRY_ONLY NO

[RAINGAGES]

```

::          Rain   Time  Snow  Data
;;Name          Type   Intrvl Catch Source
;;-----
100yr_SCS_24h_Type_II_133.6mm  INTENSITY 0:15  1.0  TIMESERIES
100yr_SCS_24h_Type_II_133.6mm

100yr_SCS_6h_106.5mm          INTENSITY 0:05  1.0  TIMESERIES
100yr_SCS_6h_106.5mm

10yr_SCS_24h_Type_II_89.9mm   INTENSITY 0:15  1.0  TIMESERIES
10yr_SCS_24h_Type_II_89.9mm

10yr_SCS_6h_70.8mm           INTENSITY 0:05  1.0  TIMESERIES
10y_SCS_6h_70.8mm

25mm                          INTENSITY 0:05  1.0  TIMESERIES 25mm

25mm_SCS_24h_Type_II_25mm     INTENSITY 0:15  1.0  TIMESERIES
25mm_SCS_24h_Type_II_25mm

25mm_SCS_6h_25mm             INTENSITY 0:05  1.0  TIMESERIES
25mm_SCS_6h_25mm

25yr_SCS_24h_Type_II_107.5mm  INTENSITY 0:15  1.0  TIMESERIES
25yr_SCS_24h_Type_II_107.5mm

25yr_SCS_6h_85.2mm           INTENSITY 0:05  1.0  TIMESERIES
25yr_SCS_6h_85.2mm

2yr_SCS_24h_Type_II_55mm      INTENSITY 0:15  1.0  TIMESERIES
2yr_SCS_24h_Type_II_55mm

2yr_SCS_6h_42.3mm            INTENSITY 0:05  1.0  TIMESERIES
2yr_SCS_6h_42.3mm

50yr_SCS_24h_Type_II_120.6mm  INTENSITY 0:15  1.0  TIMESERIES
50yr_SCS_24h_Type_II_120.6mm

50yr_SCS_6h_95.9mm           INTENSITY 0:05  1.0  TIMESERIES
50yr_SCS_6h_95.9mm

5yr_SCS_24h_Type_II_76mm      INTENSITY 0:15  1.0  TIMESERIES
5yr_SCS_24h_Type_II_76mm

5yr_SCS_6h_59.5mm            INTENSITY 0:05  1.0  TIMESERIES
5yr_SCS_6h_59.5mm
  
```


Hurricane_Hazel_(Southern_Ontario) INTENSITY 1:00 1.0 TIMESERIES
Hurricane_Hazel_(Southern_Ontario)

NO_RAIN INTENSITY 0:05 1.0 TIMESERIES NO_RAIN

SCS_6h_1mm_Jordan INTENSITY 0:05 1.0 TIMESERIES
SCS_6h_1mm_Jordan

[SUBCATCHMENTS]

;;		Total	Pcnt.	Pcnt.	Curb	Snow		
;;Name	Raingage	Outlet	Area	Imperv	Width	Slope	Length	Pack
;;	-----							
BBPR.R-01	100yr_SCS_24h_Type_II_133.6mm	BBP1	2.08	57	34	0.5	0	
BBPR.R-02	100yr_SCS_24h_Type_II_133.6mm	BBP2	1.12	32	34	0.5	0	
LR.R-01	100yr_SCS_24h_Type_II_133.6mm	Lover's1	0.99	30	34	2.6	0	
LR.R-02	100yr_SCS_24h_Type_II_133.6mm	Lover's1	3.5	31	34	2	0	
LR.R-03	100yr_SCS_24h_Type_II_133.6mm	Hew1	2.16	28	34	2.8	0	
LR.R-04	100yr_SCS_24h_Type_II_133.6mm	Hew1	5.84	30	34	1.4	0	
LR.R-05	100yr_SCS_24h_Type_II_133.6mm	Hew3	1.47	29	34	3	0	
LR.R-06	100yr_SCS_24h_Type_II_133.6mm	Hew3	3.97	44	34	0.8	0	
MD.R-01	100yr_SCS_24h_Type_II_133.6mm	Lover's2	2.49	33	41	1.9	0	
MD.R-02	100yr_SCS_24h_Type_II_133.6mm	Lover's2	6.03	38	41	2	0	
MD.R-03	100yr_SCS_24h_Type_II_133.6mm	Hew2	1.32	46	34	1.1	0	
MD.R-04	100yr_SCS_24h_Type_II_133.6mm	Hew2	0.98	51	34	0.6	0	
MD.R-05	100yr_SCS_24h_Type_II_133.6mm	Hew4	3.89	47	39	1	0	
MD.R-06	100yr_SCS_24h_Type_II_133.6mm	Hew4	4.97	48	34	1.4	0	
MD.R-07	100yr_SCS_24h_Type_II_133.6mm	Hew5	2.02	44	27	0.7	0	
YS.R-01	100yr_SCS_24h_Type_II_133.6mm	YSLP	0.99	49	34	1	0	
YS.R-02	100yr_SCS_24h_Type_II_133.6mm	YSLP	0.99	49	34	0.5	0	
YS.R-03	100yr_SCS_24h_Type_II_133.6mm	Hew4	2.5	56	34	0.5	0	

[SUBAREAS]

Subcatchment	N-Imperv	N-Perv	S-Imperv	S-Perv	PctZero	RouteTo	PctRouted
BBPR.R-01	0.013	0.15	2	5	0	OUTLET	
BBPR.R-02	0.013	0.15	2	5	0	OUTLET	
LR.R-01	0.013	0.15	2	5	0	OUTLET	
LR.R-02	0.013	0.15	2	5	0	OUTLET	
LR.R-03	0.013	0.15	2	5	0	OUTLET	
LR.R-04	0.013	0.15	2	5	0	OUTLET	
LR.R-05	0.013	0.15	2	5	0	OUTLET	
LR.R-06	0.013	0.15	2	5	0	OUTLET	
MD.R-01	0.013	0.15	2	5	0	OUTLET	
MD.R-02	0.013	0.15	2	5	0	OUTLET	
MD.R-03	0.013	0.15	2	5	0	OUTLET	
MD.R-04	0.013	0.15	2	5	0	OUTLET	
MD.R-05	0.013	0.15	2	5	0	OUTLET	
MD.R-06	0.013	0.15	2	5	0	OUTLET	
MD.R-07	0.013	0.15	2	5	0	OUTLET	
YS.R-01	0.013	0.15	2	5	0	OUTLET	
YS.R-02	0.013	0.15	2	5	0	OUTLET	
YS.R-03	0.013	0.15	2	5	0	OUTLET	

[INFILTRATION]

Subcatchment	CurveNum	HydCon	DryTime
BBPR.R-01	70	18	2
BBPR.R-02	70	18	2
LR.R-01	70	18	2

City of Barrie - Hewitt's Secondary Plan Area Environment Assessment (EA)
 Drainage and Stormwater Management Study

LR.R-02	70	18	2
LR.R-03	70	18	2
LR.R-04	70	18	2
LR.R-05	70	18	2
LR.R-06	70	18	2
MD.R-01	82	18	2
MD.R-02	70	18	2
MD.R-03	70	18	2
MD.R-04	70	18	2
MD.R-05	70	18	2
MD.R-06	70	18	2
MD.R-07	70	18	2
YS.R-01	70	18	2
YS.R-02	70	18	2
YS.R-03	70	18	2

[AQUIFERS]

;; Por- Wilt Field Hyd Cond Tens Upper Lower Lower Bottom Water Upper
 Upper

;;Name osity Point Capac Cond Slope Slope Evap Evap Loss Elev Table
 Moist Evap Pat

;;-----

105AQ	0.453	0.085	0.19	21.8	7.5	0	0	2.3	0.002	324.57	336.57	0.1
110AQ	0.463	0.116	0.232	14.5	10.6	0	0	3.7	0.002	302.57	314.57	0.2
115AQ	0.463	0.116	0.232	14.5	10.6	0	0	3.7	0.002	302.57	314.57	0.2
120AQ	0.463	0.116	0.232	14.8	10.6	0	0	3.7	0.002	270.51	282.51	0.2
125AQ	0.463	0.116	0.232	14.5	10.6	0	0	3.7	0.002	284.62	296.62	0.2
130AQ	0.479	0.251	0.371	10	14.5	0	0	4.3	0.002	264.82	278.68	0.3
132aAQ	0.437	0.047	0.105	59.8	5.7	0	0	2.3	0.002	237.086	252.086	0.1

City of Barrie - Hewitt's Secondary Plan Area Environment Assessment (EA)
Drainage and Stormwater Management Study

132AQ	0.479	0.251	0.371	10.2	14.5	0	0	4.3	0.002	240.086	251.061	0.3
134AQ	0.463	0.116	0.232	17.5	10.6	0	0	3.7	0.002	244.085	256.085	0.2
135AQ	0.453	0.085	0.19	21.8	7.5	0	0	2.3	0.002	264.651	273.651	0.1
140aAQ	0.453	0.085	0.19	21.8	7.5	0	0	2.3	0.002	241.568	250.568	0.1
140AQ	0.501	0.135	0.284	16.2	10.8	0	0	5.2	0.002	243.568	247.994	0.2
156AQ	0.453	0.085	0.19	21.8	7.5	0	0	2.3	0.002	239.46	251.11	0.1
212AQ	0.453	0.085	0.19	21.8	7.5	0	0	2.3	0.002	236.5	240.365	0.1
220AQ	0.501	0.135	0.284	12.2	10.8	0	0	5.2	0.002	248.671	251.709	0.2
222AQ	0.453	0.085	0.19	21.8	7.5	0	0	2.3	0.002	233.686	242.681	0.1
225AQ	0.453	0.085	0.19	21.8	7.5	0	0	2.3	0.002	232.06	254.06	0.1
S190aAQ	0.453	0.085	0.19	21.8	7.5	0	0	2.3	0.002	258.51	260.22	0.1
S210aAQ	0.453	0.085	0.19	21.8	7.5	0	0	2.3	0.002	246.43	248.43	0.2
S250AQ	0.453	0.085	0.19	21.8	7.5	0	0	2.3	0.002	250.984	251.446	0.2
S251AQ	0.453	0.085	0.19	21.8	7.5	0	0	2.3	0.002	251.134	252.579	0.1
S290aAQ	0.453	0.085	0.19	21.8	7.5	0	0	2.3	0.002	252	259.41	0.1
S290bAQ	0.453	0.085	0.19	21.8	7.5	0	0	2.3	0.002	237.07	251.88	0.1

[GROUNDWATER]

Subcatchment	Aquifer	Node	Elev	A1	B1	A2	B2	A3	Depth	Elev
Ebot	Wgr	Umc								

-

[OUTFALLS]

Invert	Outfall	Stage/Table	Tide	
Name	Elev.	Type	Time Series	Gate Route To

BBP1	0	FREE	NO
------	---	------	----

;BBP1

City of Barrie - Hewitt's Secondary Plan Area Environment Assessment (EA)
Drainage and Stormwater Management Study

BBP2	0	FREE	NO
Hew1	0	FREE	NO
Hew2	266	NORMAL	NO
Hew3	0	FREE	NO
Hew4	0	FREE	NO
Hew5	0	FREE	NO
Lover's1	0	FREE	NO
Lover's2	0	FREE	NO
YSLP	0	FREE	NO

[TIMESERIES]

;;Name Date Time Value

;;-----

;SCS_24h_Type_II_133.6mm design storm, total rainfall = 133.6 mm, rain units = mm/hr.

100yr_SCS_24h_Type_II_133.6mm	0:00	1.47
100yr_SCS_24h_Type_II_133.6mm	0:15	1.47
100yr_SCS_24h_Type_II_133.6mm	0:30	1.47
100yr_SCS_24h_Type_II_133.6mm	0:45	1.47
100yr_SCS_24h_Type_II_133.6mm	1:00	1.47
100yr_SCS_24h_Type_II_133.6mm	1:15	1.47
100yr_SCS_24h_Type_II_133.6mm	1:30	1.47
100yr_SCS_24h_Type_II_133.6mm	1:45	1.47
100yr_SCS_24h_Type_II_133.6mm	2:00	1.737
100yr_SCS_24h_Type_II_133.6mm	2:15	1.737
100yr_SCS_24h_Type_II_133.6mm	2:30	1.737
100yr_SCS_24h_Type_II_133.6mm	2:45	1.737
100yr_SCS_24h_Type_II_133.6mm	3:00	1.737
100yr_SCS_24h_Type_II_133.6mm	3:15	1.737

City of Barrie - Hewitt's Secondary Plan Area Environment Assessment (EA)
Drainage and Stormwater Management Study

100yr_SCS_24h_Type_II_133.6mm	3:30	1.737
100yr_SCS_24h_Type_II_133.6mm	3:45	1.737
100yr_SCS_24h_Type_II_133.6mm	4:00	2.138
100yr_SCS_24h_Type_II_133.6mm	4:15	2.138
100yr_SCS_24h_Type_II_133.6mm	4:30	2.138
100yr_SCS_24h_Type_II_133.6mm	4:45	2.138
100yr_SCS_24h_Type_II_133.6mm	5:00	2.138
100yr_SCS_24h_Type_II_133.6mm	5:15	2.138
100yr_SCS_24h_Type_II_133.6mm	5:30	2.138
100yr_SCS_24h_Type_II_133.6mm	5:45	2.138
100yr_SCS_24h_Type_II_133.6mm	6:00	2.405
100yr_SCS_24h_Type_II_133.6mm	6:15	2.405
100yr_SCS_24h_Type_II_133.6mm	6:30	2.405
100yr_SCS_24h_Type_II_133.6mm	6:45	2.405
100yr_SCS_24h_Type_II_133.6mm	7:00	2.939
100yr_SCS_24h_Type_II_133.6mm	7:15	2.939
100yr_SCS_24h_Type_II_133.6mm	7:30	2.939
100yr_SCS_24h_Type_II_133.6mm	7:45	2.939
100yr_SCS_24h_Type_II_133.6mm	8:00	3.474
100yr_SCS_24h_Type_II_133.6mm	8:15	3.474
100yr_SCS_24h_Type_II_133.6mm	8:30	3.741
100yr_SCS_24h_Type_II_133.6mm	8:45	3.741
100yr_SCS_24h_Type_II_133.6mm	9:00	4.275
100yr_SCS_24h_Type_II_133.6mm	9:15	4.275
100yr_SCS_24h_Type_II_133.6mm	9:30	4.81
100yr_SCS_24h_Type_II_133.6mm	9:45	4.81
100yr_SCS_24h_Type_II_133.6mm	10:00	6.146
100yr_SCS_24h_Type_II_133.6mm	10:15	6.146

City of Barrie - Hewitt's Secondary Plan Area Environment Assessment (EA)
Drainage and Stormwater Management Study

100yr_SCS_24h_Type_II_133.6mm	10:30	8.283
100yr_SCS_24h_Type_II_133.6mm	10:45	8.283
100yr_SCS_24h_Type_II_133.6mm	11:00	12.826
100yr_SCS_24h_Type_II_133.6mm	11:15	12.826
100yr_SCS_24h_Type_II_133.6mm	11:30	39.546
100yr_SCS_24h_Type_II_133.6mm	11:45	163.526
100yr_SCS_24h_Type_II_133.6mm	12:00	19.238
100yr_SCS_24h_Type_II_133.6mm	12:15	19.238
100yr_SCS_24h_Type_II_133.6mm	12:30	9.886
100yr_SCS_24h_Type_II_133.6mm	12:45	9.886
100yr_SCS_24h_Type_II_133.6mm	13:00	7.214
100yr_SCS_24h_Type_II_133.6mm	13:15	7.214
100yr_SCS_24h_Type_II_133.6mm	13:30	5.611
100yr_SCS_24h_Type_II_133.6mm	13:45	5.611
100yr_SCS_24h_Type_II_133.6mm	14:00	4.008
100yr_SCS_24h_Type_II_133.6mm	14:15	4.008
100yr_SCS_24h_Type_II_133.6mm	14:30	4.008
100yr_SCS_24h_Type_II_133.6mm	14:45	4.008
100yr_SCS_24h_Type_II_133.6mm	15:00	4.008
100yr_SCS_24h_Type_II_133.6mm	15:15	4.008
100yr_SCS_24h_Type_II_133.6mm	15:30	4.008
100yr_SCS_24h_Type_II_133.6mm	15:45	4.008
100yr_SCS_24h_Type_II_133.6mm	16:00	2.405
100yr_SCS_24h_Type_II_133.6mm	16:15	2.405
100yr_SCS_24h_Type_II_133.6mm	16:30	2.405
100yr_SCS_24h_Type_II_133.6mm	16:45	2.405
100yr_SCS_24h_Type_II_133.6mm	17:00	2.405
100yr_SCS_24h_Type_II_133.6mm	17:15	2.405

City of Barrie - Hewitt's Secondary Plan Area Environment Assessment (EA)
Drainage and Stormwater Management Study

100yr_SCS_24h_Type_II_133.6mm	17:30	2.405
100yr_SCS_24h_Type_II_133.6mm	17:45	2.405
100yr_SCS_24h_Type_II_133.6mm	18:00	2.405
100yr_SCS_24h_Type_II_133.6mm	18:15	2.405
100yr_SCS_24h_Type_II_133.6mm	18:30	2.405
100yr_SCS_24h_Type_II_133.6mm	18:45	2.405
100yr_SCS_24h_Type_II_133.6mm	19:00	2.405
100yr_SCS_24h_Type_II_133.6mm	19:15	2.405
100yr_SCS_24h_Type_II_133.6mm	19:30	2.405
100yr_SCS_24h_Type_II_133.6mm	19:45	2.405
100yr_SCS_24h_Type_II_133.6mm	20:00	1.603
100yr_SCS_24h_Type_II_133.6mm	20:15	1.603
100yr_SCS_24h_Type_II_133.6mm	20:30	1.603
100yr_SCS_24h_Type_II_133.6mm	20:45	1.603
100yr_SCS_24h_Type_II_133.6mm	21:00	1.603
100yr_SCS_24h_Type_II_133.6mm	21:15	1.603
100yr_SCS_24h_Type_II_133.6mm	21:30	1.603
100yr_SCS_24h_Type_II_133.6mm	21:45	1.603
100yr_SCS_24h_Type_II_133.6mm	22:00	1.603
100yr_SCS_24h_Type_II_133.6mm	22:15	1.603
100yr_SCS_24h_Type_II_133.6mm	22:30	1.603
100yr_SCS_24h_Type_II_133.6mm	22:45	1.603
100yr_SCS_24h_Type_II_133.6mm	23:00	1.603
100yr_SCS_24h_Type_II_133.6mm	23:15	1.603
100yr_SCS_24h_Type_II_133.6mm	23:30	1.603
100yr_SCS_24h_Type_II_133.6mm	23:45	1.603
100yr_SCS_24h_Type_II_133.6mm	24:00	0

;SCS_6h_106.5mm design storm, total rainfall = 106.5 mm, rain units = mm/hr.

100yr_SCS_6h_106.5mm	0:00	7.221
100yr_SCS_6h_106.5mm	0:05	7.221
100yr_SCS_6h_106.5mm	0:10	7.221
100yr_SCS_6h_106.5mm	0:15	7.221
100yr_SCS_6h_106.5mm	0:20	7.221
100yr_SCS_6h_106.5mm	0:25	7.221
100yr_SCS_6h_106.5mm	0:30	7.221
100yr_SCS_6h_106.5mm	0:35	10.825
100yr_SCS_6h_106.5mm	0:40	10.825
100yr_SCS_6h_106.5mm	0:45	10.825
100yr_SCS_6h_106.5mm	0:50	10.825
100yr_SCS_6h_106.5mm	0:55	10.825
100yr_SCS_6h_106.5mm	1:00	10.825
100yr_SCS_6h_106.5mm	1:05	10.825
100yr_SCS_6h_106.5mm	1:10	14.429
100yr_SCS_6h_106.5mm	1:15	14.429
100yr_SCS_6h_106.5mm	1:20	14.429
100yr_SCS_6h_106.5mm	1:25	14.429
100yr_SCS_6h_106.5mm	1:30	18.033
100yr_SCS_6h_106.5mm	1:35	18.033
100yr_SCS_6h_106.5mm	1:40	18.033
100yr_SCS_6h_106.5mm	1:45	18.033
100yr_SCS_6h_106.5mm	1:50	43.286
100yr_SCS_6h_106.5mm	1:55	43.286
100yr_SCS_6h_106.5mm	2:00	43.286
100yr_SCS_6h_106.5mm	2:05	78.15
100yr_SCS_6h_106.5mm	2:10	78.15

City of Barrie - Hewitt's Secondary Plan Area Environment Assessment (EA)
Drainage and Stormwater Management Study

100yr_SCS_6h_106.5mm	2:15	81.153
100yr_SCS_6h_106.5mm	2:20	81.153
100yr_SCS_6h_106.5mm	2:25	63.12
100yr_SCS_6h_106.5mm	2:30	27.055
100yr_SCS_6h_106.5mm	2:35	27.055
100yr_SCS_6h_106.5mm	2:40	27.055
100yr_SCS_6h_106.5mm	2:45	18.033
100yr_SCS_6h_106.5mm	2:50	18.033
100yr_SCS_6h_106.5mm	2:55	18.033
100yr_SCS_6h_106.5mm	3:00	18.033
100yr_SCS_6h_106.5mm	3:05	18.033
100yr_SCS_6h_106.5mm	3:10	18.033
100yr_SCS_6h_106.5mm	3:15	18.033
100yr_SCS_6h_106.5mm	3:20	14.429
100yr_SCS_6h_106.5mm	3:25	14.429
100yr_SCS_6h_106.5mm	3:30	14.429
100yr_SCS_6h_106.5mm	3:35	14.429
100yr_SCS_6h_106.5mm	3:40	14.429
100yr_SCS_6h_106.5mm	3:45	14.429
100yr_SCS_6h_106.5mm	3:50	14.429
100yr_SCS_6h_106.5mm	3:55	10.825
100yr_SCS_6h_106.5mm	4:00	10.825
100yr_SCS_6h_106.5mm	4:05	10.825
100yr_SCS_6h_106.5mm	4:10	10.825
100yr_SCS_6h_106.5mm	4:15	10.825
100yr_SCS_6h_106.5mm	4:20	10.825
100yr_SCS_6h_106.5mm	4:25	10.825
100yr_SCS_6h_106.5mm	4:30	8.422

City of Barrie - Hewitt's Secondary Plan Area Environment Assessment (EA)
Drainage and Stormwater Management Study

100yr_SCS_6h_106.5mm	4:35	8.422
100yr_SCS_6h_106.5mm	4:40	8.422
100yr_SCS_6h_106.5mm	4:45	8.422
100yr_SCS_6h_106.5mm	4:50	8.422
100yr_SCS_6h_106.5mm	4:55	8.422
100yr_SCS_6h_106.5mm	5:00	8.422
100yr_SCS_6h_106.5mm	5:05	8.422
100yr_SCS_6h_106.5mm	5:10	8.422
100yr_SCS_6h_106.5mm	5:15	8.422
100yr_SCS_6h_106.5mm	5:20	8.422
100yr_SCS_6h_106.5mm	5:25	4.805
100yr_SCS_6h_106.5mm	5:30	4.805
100yr_SCS_6h_106.5mm	5:35	4.805
100yr_SCS_6h_106.5mm	5:40	4.805
100yr_SCS_6h_106.5mm	5:45	4.805
100yr_SCS_6h_106.5mm	5:50	4.805
100yr_SCS_6h_106.5mm	5:55	4.805
100yr_SCS_6h_106.5mm	6:00	0

;SCS_6h_70.8mm design storm, total rainfall = 70.8 mm, rain units = mm/hr.

10y_SCS_6h_70.8mm	0:00	4.8
10y_SCS_6h_70.8mm	0:05	4.8
10y_SCS_6h_70.8mm	0:10	4.8
10y_SCS_6h_70.8mm	0:15	4.8
10y_SCS_6h_70.8mm	0:20	4.8
10y_SCS_6h_70.8mm	0:25	4.8
10y_SCS_6h_70.8mm	0:30	4.8
10y_SCS_6h_70.8mm	0:35	7.196

City of Barrie - Hewitt's Secondary Plan Area Environment Assessment (EA)
Drainage and Stormwater Management Study

10y_SCS_6h_70.8mm	0:40	7.196
10y_SCS_6h_70.8mm	0:45	7.196
10y_SCS_6h_70.8mm	0:50	7.196
10y_SCS_6h_70.8mm	0:55	7.196
10y_SCS_6h_70.8mm	1:00	7.196
10y_SCS_6h_70.8mm	1:05	7.196
10y_SCS_6h_70.8mm	1:10	9.592
10y_SCS_6h_70.8mm	1:15	9.592
10y_SCS_6h_70.8mm	1:20	9.592
10y_SCS_6h_70.8mm	1:25	9.592
10y_SCS_6h_70.8mm	1:30	11.988
10y_SCS_6h_70.8mm	1:35	11.988
10y_SCS_6h_70.8mm	1:40	11.988
10y_SCS_6h_70.8mm	1:45	11.988
10y_SCS_6h_70.8mm	1:50	28.776
10y_SCS_6h_70.8mm	1:55	28.776
10y_SCS_6h_70.8mm	2:00	28.776
10y_SCS_6h_70.8mm	2:05	51.953
10y_SCS_6h_70.8mm	2:10	51.953
10y_SCS_6h_70.8mm	2:15	53.95
10y_SCS_6h_70.8mm	2:20	53.95
10y_SCS_6h_70.8mm	2:25	41.962
10y_SCS_6h_70.8mm	2:30	17.986
10y_SCS_6h_70.8mm	2:35	17.986
10y_SCS_6h_70.8mm	2:40	17.986
10y_SCS_6h_70.8mm	2:45	11.988
10y_SCS_6h_70.8mm	2:50	11.988
10y_SCS_6h_70.8mm	2:55	11.988

City of Barrie - Hewitt's Secondary Plan Area Environment Assessment (EA)
Drainage and Stormwater Management Study

10y_SCS_6h_70.8mm	3:00	11.988
10y_SCS_6h_70.8mm	3:05	11.988
10y_SCS_6h_70.8mm	3:10	11.988
10y_SCS_6h_70.8mm	3:15	11.988
10y_SCS_6h_70.8mm	3:20	9.592
10y_SCS_6h_70.8mm	3:25	9.592
10y_SCS_6h_70.8mm	3:30	9.592
10y_SCS_6h_70.8mm	3:35	9.592
10y_SCS_6h_70.8mm	3:40	9.592
10y_SCS_6h_70.8mm	3:45	9.592
10y_SCS_6h_70.8mm	3:50	9.592
10y_SCS_6h_70.8mm	3:55	7.196
10y_SCS_6h_70.8mm	4:00	7.196
10y_SCS_6h_70.8mm	4:05	7.196
10y_SCS_6h_70.8mm	4:10	7.196
10y_SCS_6h_70.8mm	4:15	7.196
10y_SCS_6h_70.8mm	4:20	7.196
10y_SCS_6h_70.8mm	4:25	7.196
10y_SCS_6h_70.8mm	4:30	5.599
10y_SCS_6h_70.8mm	4:35	5.599
10y_SCS_6h_70.8mm	4:40	5.599
10y_SCS_6h_70.8mm	4:45	5.599
10y_SCS_6h_70.8mm	4:50	5.599
10y_SCS_6h_70.8mm	4:55	5.599
10y_SCS_6h_70.8mm	5:00	5.599
10y_SCS_6h_70.8mm	5:05	5.599
10y_SCS_6h_70.8mm	5:10	5.599
10y_SCS_6h_70.8mm	5:15	5.599

City of Barrie - Hewitt's Secondary Plan Area Environment Assessment (EA)
Drainage and Stormwater Management Study

10y_SCS_6h_70.8mm	5:20	5.599
10y_SCS_6h_70.8mm	5:25	3.194
10y_SCS_6h_70.8mm	5:30	3.194
10y_SCS_6h_70.8mm	5:35	3.194
10y_SCS_6h_70.8mm	5:40	3.194
10y_SCS_6h_70.8mm	5:45	3.194
10y_SCS_6h_70.8mm	5:50	3.194
10y_SCS_6h_70.8mm	5:55	3.194
10y_SCS_6h_70.8mm	6:00	0

;SCS_24h_Type_II_89.9mm design storm, total rainfall = 89.9 mm, rain units = mm/hr.

10yr_SCS_24h_Type_II_89.9mm	0:00	0.989
10yr_SCS_24h_Type_II_89.9mm	0:15	0.989
10yr_SCS_24h_Type_II_89.9mm	0:30	0.989
10yr_SCS_24h_Type_II_89.9mm	0:45	0.989
10yr_SCS_24h_Type_II_89.9mm	1:00	0.989
10yr_SCS_24h_Type_II_89.9mm	1:15	0.989
10yr_SCS_24h_Type_II_89.9mm	1:30	0.989
10yr_SCS_24h_Type_II_89.9mm	1:45	0.989
10yr_SCS_24h_Type_II_89.9mm	2:00	1.169
10yr_SCS_24h_Type_II_89.9mm	2:15	1.169
10yr_SCS_24h_Type_II_89.9mm	2:30	1.169
10yr_SCS_24h_Type_II_89.9mm	2:45	1.169
10yr_SCS_24h_Type_II_89.9mm	3:00	1.169
10yr_SCS_24h_Type_II_89.9mm	3:15	1.169
10yr_SCS_24h_Type_II_89.9mm	3:30	1.169
10yr_SCS_24h_Type_II_89.9mm	3:45	1.169
10yr_SCS_24h_Type_II_89.9mm	4:00	1.438

City of Barrie - Hewitt's Secondary Plan Area Environment Assessment (EA)
Drainage and Stormwater Management Study

10yr_SCS_24h_Type_II_89.9mm	4:15	1.438
10yr_SCS_24h_Type_II_89.9mm	4:30	1.438
10yr_SCS_24h_Type_II_89.9mm	4:45	1.438
10yr_SCS_24h_Type_II_89.9mm	5:00	1.438
10yr_SCS_24h_Type_II_89.9mm	5:15	1.438
10yr_SCS_24h_Type_II_89.9mm	5:30	1.438
10yr_SCS_24h_Type_II_89.9mm	5:45	1.438
10yr_SCS_24h_Type_II_89.9mm	6:00	1.618
10yr_SCS_24h_Type_II_89.9mm	6:15	1.618
10yr_SCS_24h_Type_II_89.9mm	6:30	1.618
10yr_SCS_24h_Type_II_89.9mm	6:45	1.618
10yr_SCS_24h_Type_II_89.9mm	7:00	1.978
10yr_SCS_24h_Type_II_89.9mm	7:15	1.978
10yr_SCS_24h_Type_II_89.9mm	7:30	1.978
10yr_SCS_24h_Type_II_89.9mm	7:45	1.978
10yr_SCS_24h_Type_II_89.9mm	8:00	2.337
10yr_SCS_24h_Type_II_89.9mm	8:15	2.337
10yr_SCS_24h_Type_II_89.9mm	8:30	2.517
10yr_SCS_24h_Type_II_89.9mm	8:45	2.517
10yr_SCS_24h_Type_II_89.9mm	9:00	2.877
10yr_SCS_24h_Type_II_89.9mm	9:15	2.877
10yr_SCS_24h_Type_II_89.9mm	9:30	3.236
10yr_SCS_24h_Type_II_89.9mm	9:45	3.236
10yr_SCS_24h_Type_II_89.9mm	10:00	4.135
10yr_SCS_24h_Type_II_89.9mm	10:15	4.135
10yr_SCS_24h_Type_II_89.9mm	10:30	5.574
10yr_SCS_24h_Type_II_89.9mm	10:45	5.574
10yr_SCS_24h_Type_II_89.9mm	11:00	8.63

City of Barrie - Hewitt's Secondary Plan Area Environment Assessment (EA)
Drainage and Stormwater Management Study

10yr_SCS_24h_Type_II_89.9mm	11:15	8.63
10yr_SCS_24h_Type_II_89.9mm	11:30	26.61
10yr_SCS_24h_Type_II_89.9mm	11:45	110.038
10yr_SCS_24h_Type_II_89.9mm	12:00	12.946
10yr_SCS_24h_Type_II_89.9mm	12:15	12.946
10yr_SCS_24h_Type_II_89.9mm	12:30	6.653
10yr_SCS_24h_Type_II_89.9mm	12:45	6.653
10yr_SCS_24h_Type_II_89.9mm	13:00	4.855
10yr_SCS_24h_Type_II_89.9mm	13:15	4.855
10yr_SCS_24h_Type_II_89.9mm	13:30	3.776
10yr_SCS_24h_Type_II_89.9mm	13:45	3.776
10yr_SCS_24h_Type_II_89.9mm	14:00	2.697
10yr_SCS_24h_Type_II_89.9mm	14:15	2.697
10yr_SCS_24h_Type_II_89.9mm	14:30	2.697
10yr_SCS_24h_Type_II_89.9mm	14:45	2.697
10yr_SCS_24h_Type_II_89.9mm	15:00	2.697
10yr_SCS_24h_Type_II_89.9mm	15:15	2.697
10yr_SCS_24h_Type_II_89.9mm	15:30	2.697
10yr_SCS_24h_Type_II_89.9mm	15:45	2.697
10yr_SCS_24h_Type_II_89.9mm	16:00	1.618
10yr_SCS_24h_Type_II_89.9mm	16:15	1.618
10yr_SCS_24h_Type_II_89.9mm	16:30	1.618
10yr_SCS_24h_Type_II_89.9mm	16:45	1.618
10yr_SCS_24h_Type_II_89.9mm	17:00	1.618
10yr_SCS_24h_Type_II_89.9mm	17:15	1.618
10yr_SCS_24h_Type_II_89.9mm	17:30	1.618
10yr_SCS_24h_Type_II_89.9mm	17:45	1.618
10yr_SCS_24h_Type_II_89.9mm	18:00	1.618

City of Barrie - Hewitt's Secondary Plan Area Environment Assessment (EA)
Drainage and Stormwater Management Study

10yr_SCS_24h_Type_II_89.9mm	18:15	1.618
10yr_SCS_24h_Type_II_89.9mm	18:30	1.618
10yr_SCS_24h_Type_II_89.9mm	18:45	1.618
10yr_SCS_24h_Type_II_89.9mm	19:00	1.618
10yr_SCS_24h_Type_II_89.9mm	19:15	1.618
10yr_SCS_24h_Type_II_89.9mm	19:30	1.618
10yr_SCS_24h_Type_II_89.9mm	19:45	1.618
10yr_SCS_24h_Type_II_89.9mm	20:00	1.079
10yr_SCS_24h_Type_II_89.9mm	20:15	1.079
10yr_SCS_24h_Type_II_89.9mm	20:30	1.079
10yr_SCS_24h_Type_II_89.9mm	20:45	1.079
10yr_SCS_24h_Type_II_89.9mm	21:00	1.079
10yr_SCS_24h_Type_II_89.9mm	21:15	1.079
10yr_SCS_24h_Type_II_89.9mm	21:30	1.079
10yr_SCS_24h_Type_II_89.9mm	21:45	1.079
10yr_SCS_24h_Type_II_89.9mm	22:00	1.079
10yr_SCS_24h_Type_II_89.9mm	22:15	1.079
10yr_SCS_24h_Type_II_89.9mm	22:30	1.079
10yr_SCS_24h_Type_II_89.9mm	22:45	1.079
10yr_SCS_24h_Type_II_89.9mm	23:00	1.079
10yr_SCS_24h_Type_II_89.9mm	23:15	1.079
10yr_SCS_24h_Type_II_89.9mm	23:30	1.079
10yr_SCS_24h_Type_II_89.9mm	23:45	1.079
10yr_SCS_24h_Type_II_89.9mm	24:00	0
25mm	0	1.44
25mm	0:05	1.44
25mm	0:10	1.54

City of Barrie - Hewitt's Secondary Plan Area Environment Assessment (EA)
Drainage and Stormwater Management Study

25mm	0:15	1.64
25mm	0:20	1.75
25mm	0:25	1.95
25mm	0:30	1.95
25mm	0:35	2.16
25mm	0:40	2.26
25mm	0:45	2.57
25mm	0:50	2.78
25mm	0:55	3.19
25mm	1:00	3.6
25mm	1:05	4.22
25mm	1:10	5.04
25mm	1:15	6.37
25mm	1:20	8.84
25mm	1:25	14.19
25mm	1:30	35.06
25mm	1:35	70.73
25mm	1:40	26.94
25mm	1:45	15.52
25mm	1:50	10.69
25mm	1:55	8.22
25mm	2:00	6.68
25mm	2:05	5.65
25mm	2:10	4.83
25mm	2:15	4.32
25mm	2:20	3.91
25mm	2:25	3.5
25mm	2:30	3.19

City of Barrie - Hewitt's Secondary Plan Area Environment Assessment (EA)
 Drainage and Stormwater Management Study

25mm	2:35	2.98
25mm	2:40	2.78
25mm	2:45	2.57
25mm	2:50	2.47
25mm	2:55	2.26
25mm	3:00	2.16
25mm	3:05	2.06
25mm	3:10	1.95
25mm	3:15	1.95
25mm	3:20	1.75
25mm	3:25	1.75
25mm	3:30	1.64
25mm	3:35	1.64
25mm	3:40	1.54
25mm	3:45	1.44
25mm	3:50	1.44
25mm	3:55	1.44
25mm	4:00	0

;SCS_24h_Type_II_25mm design storm, total rainfall = 25 mm, rain units = mm/hr.

25mm_SCS_24h_Type_II_25mm	0:00	0.275
25mm_SCS_24h_Type_II_25mm	0:15	0.275
25mm_SCS_24h_Type_II_25mm	0:30	0.275
25mm_SCS_24h_Type_II_25mm	0:45	0.275
25mm_SCS_24h_Type_II_25mm	1:00	0.275
25mm_SCS_24h_Type_II_25mm	1:15	0.275
25mm_SCS_24h_Type_II_25mm	1:30	0.275
25mm_SCS_24h_Type_II_25mm	1:45	0.275

City of Barrie - Hewitt's Secondary Plan Area Environment Assessment (EA)
Drainage and Stormwater Management Study

25mm_SCS_24h_Type_II_25mm	2:00	0.325
25mm_SCS_24h_Type_II_25mm	2:15	0.325
25mm_SCS_24h_Type_II_25mm	2:30	0.325
25mm_SCS_24h_Type_II_25mm	2:45	0.325
25mm_SCS_24h_Type_II_25mm	3:00	0.325
25mm_SCS_24h_Type_II_25mm	3:15	0.325
25mm_SCS_24h_Type_II_25mm	3:30	0.325
25mm_SCS_24h_Type_II_25mm	3:45	0.325
25mm_SCS_24h_Type_II_25mm	4:00	0.4
25mm_SCS_24h_Type_II_25mm	4:15	0.4
25mm_SCS_24h_Type_II_25mm	4:30	0.4
25mm_SCS_24h_Type_II_25mm	4:45	0.4
25mm_SCS_24h_Type_II_25mm	5:00	0.4
25mm_SCS_24h_Type_II_25mm	5:15	0.4
25mm_SCS_24h_Type_II_25mm	5:30	0.4
25mm_SCS_24h_Type_II_25mm	5:45	0.4
25mm_SCS_24h_Type_II_25mm	6:00	0.45
25mm_SCS_24h_Type_II_25mm	6:15	0.45
25mm_SCS_24h_Type_II_25mm	6:30	0.45
25mm_SCS_24h_Type_II_25mm	6:45	0.45
25mm_SCS_24h_Type_II_25mm	7:00	0.55
25mm_SCS_24h_Type_II_25mm	7:15	0.55
25mm_SCS_24h_Type_II_25mm	7:30	0.55
25mm_SCS_24h_Type_II_25mm	7:45	0.55
25mm_SCS_24h_Type_II_25mm	8:00	0.65
25mm_SCS_24h_Type_II_25mm	8:15	0.65
25mm_SCS_24h_Type_II_25mm	8:30	0.7
25mm_SCS_24h_Type_II_25mm	8:45	0.7

City of Barrie - Hewitt's Secondary Plan Area Environment Assessment (EA)
Drainage and Stormwater Management Study

25mm_SCS_24h_Type_II_25mm	9:00	0.8
25mm_SCS_24h_Type_II_25mm	9:15	0.8
25mm_SCS_24h_Type_II_25mm	9:30	0.9
25mm_SCS_24h_Type_II_25mm	9:45	0.9
25mm_SCS_24h_Type_II_25mm	10:00	1.15
25mm_SCS_24h_Type_II_25mm	10:15	1.15
25mm_SCS_24h_Type_II_25mm	10:30	1.55
25mm_SCS_24h_Type_II_25mm	10:45	1.55
25mm_SCS_24h_Type_II_25mm	11:00	2.4
25mm_SCS_24h_Type_II_25mm	11:15	2.4
25mm_SCS_24h_Type_II_25mm	11:30	7.4
25mm_SCS_24h_Type_II_25mm	11:45	30.6
25mm_SCS_24h_Type_II_25mm	12:00	3.6
25mm_SCS_24h_Type_II_25mm	12:15	3.6
25mm_SCS_24h_Type_II_25mm	12:30	1.85
25mm_SCS_24h_Type_II_25mm	12:45	1.85
25mm_SCS_24h_Type_II_25mm	13:00	1.35
25mm_SCS_24h_Type_II_25mm	13:15	1.35
25mm_SCS_24h_Type_II_25mm	13:30	1.05
25mm_SCS_24h_Type_II_25mm	13:45	1.05
25mm_SCS_24h_Type_II_25mm	14:00	0.75
25mm_SCS_24h_Type_II_25mm	14:15	0.75
25mm_SCS_24h_Type_II_25mm	14:30	0.75
25mm_SCS_24h_Type_II_25mm	14:45	0.75
25mm_SCS_24h_Type_II_25mm	15:00	0.75
25mm_SCS_24h_Type_II_25mm	15:15	0.75
25mm_SCS_24h_Type_II_25mm	15:30	0.75
25mm_SCS_24h_Type_II_25mm	15:45	0.75

City of Barrie - Hewitt's Secondary Plan Area Environment Assessment (EA)
Drainage and Stormwater Management Study

25mm_SCS_24h_Type_II_25mm	16:00	0.45
25mm_SCS_24h_Type_II_25mm	16:15	0.45
25mm_SCS_24h_Type_II_25mm	16:30	0.45
25mm_SCS_24h_Type_II_25mm	16:45	0.45
25mm_SCS_24h_Type_II_25mm	17:00	0.45
25mm_SCS_24h_Type_II_25mm	17:15	0.45
25mm_SCS_24h_Type_II_25mm	17:30	0.45
25mm_SCS_24h_Type_II_25mm	17:45	0.45
25mm_SCS_24h_Type_II_25mm	18:00	0.45
25mm_SCS_24h_Type_II_25mm	18:15	0.45
25mm_SCS_24h_Type_II_25mm	18:30	0.45
25mm_SCS_24h_Type_II_25mm	18:45	0.45
25mm_SCS_24h_Type_II_25mm	19:00	0.45
25mm_SCS_24h_Type_II_25mm	19:15	0.45
25mm_SCS_24h_Type_II_25mm	19:30	0.45
25mm_SCS_24h_Type_II_25mm	19:45	0.45
25mm_SCS_24h_Type_II_25mm	20:00	0.3
25mm_SCS_24h_Type_II_25mm	20:15	0.3
25mm_SCS_24h_Type_II_25mm	20:30	0.3
25mm_SCS_24h_Type_II_25mm	20:45	0.3
25mm_SCS_24h_Type_II_25mm	21:00	0.3
25mm_SCS_24h_Type_II_25mm	21:15	0.3
25mm_SCS_24h_Type_II_25mm	21:30	0.3
25mm_SCS_24h_Type_II_25mm	21:45	0.3
25mm_SCS_24h_Type_II_25mm	22:00	0.3
25mm_SCS_24h_Type_II_25mm	22:15	0.3
25mm_SCS_24h_Type_II_25mm	22:30	0.3
25mm_SCS_24h_Type_II_25mm	22:45	0.3

City of Barrie - Hewitt's Secondary Plan Area Environment Assessment (EA)
Drainage and Stormwater Management Study

25mm_SCS_24h_Type_II_25mm	23:00	0.3
25mm_SCS_24h_Type_II_25mm	23:15	0.3
25mm_SCS_24h_Type_II_25mm	23:30	0.3
25mm_SCS_24h_Type_II_25mm	23:45	0.3
25mm_SCS_24h_Type_II_25mm	24:00	0

;SCS_6h_25mm design storm, total rainfall = 25 mm, rain units = mm/hr.

25mm_SCS_6h_25mm	0:00	1.695
25mm_SCS_6h_25mm	0:05	1.695
25mm_SCS_6h_25mm	0:10	1.695
25mm_SCS_6h_25mm	0:15	1.695
25mm_SCS_6h_25mm	0:20	1.695
25mm_SCS_6h_25mm	0:25	1.695
25mm_SCS_6h_25mm	0:30	1.695
25mm_SCS_6h_25mm	0:35	2.541
25mm_SCS_6h_25mm	0:40	2.541
25mm_SCS_6h_25mm	0:45	2.541
25mm_SCS_6h_25mm	0:50	2.541
25mm_SCS_6h_25mm	0:55	2.541
25mm_SCS_6h_25mm	1:00	2.541
25mm_SCS_6h_25mm	1:05	2.541
25mm_SCS_6h_25mm	1:10	3.387
25mm_SCS_6h_25mm	1:15	3.387
25mm_SCS_6h_25mm	1:20	3.387
25mm_SCS_6h_25mm	1:25	3.387
25mm_SCS_6h_25mm	1:30	4.233
25mm_SCS_6h_25mm	1:35	4.233
25mm_SCS_6h_25mm	1:40	4.233

City of Barrie - Hewitt's Secondary Plan Area Environment Assessment (EA)
Drainage and Stormwater Management Study

25mm_SCS_6h_25mm	1:45	4.233
25mm_SCS_6h_25mm	1:50	10.161
25mm_SCS_6h_25mm	1:55	10.161
25mm_SCS_6h_25mm	2:00	10.161
25mm_SCS_6h_25mm	2:05	18.345
25mm_SCS_6h_25mm	2:10	18.345
25mm_SCS_6h_25mm	2:15	19.05
25mm_SCS_6h_25mm	2:20	19.05
25mm_SCS_6h_25mm	2:25	14.817
25mm_SCS_6h_25mm	2:30	6.351
25mm_SCS_6h_25mm	2:35	6.351
25mm_SCS_6h_25mm	2:40	6.351
25mm_SCS_6h_25mm	2:45	4.233
25mm_SCS_6h_25mm	2:50	4.233
25mm_SCS_6h_25mm	2:55	4.233
25mm_SCS_6h_25mm	3:00	4.233
25mm_SCS_6h_25mm	3:05	4.233
25mm_SCS_6h_25mm	3:10	4.233
25mm_SCS_6h_25mm	3:15	4.233
25mm_SCS_6h_25mm	3:20	3.387
25mm_SCS_6h_25mm	3:25	3.387
25mm_SCS_6h_25mm	3:30	3.387
25mm_SCS_6h_25mm	3:35	3.387
25mm_SCS_6h_25mm	3:40	3.387
25mm_SCS_6h_25mm	3:45	3.387
25mm_SCS_6h_25mm	3:50	3.387
25mm_SCS_6h_25mm	3:55	2.541
25mm_SCS_6h_25mm	4:00	2.541

City of Barrie - Hewitt's Secondary Plan Area Environment Assessment (EA)
Drainage and Stormwater Management Study

25mm_SCS_6h_25mm	4:05	2.541
25mm_SCS_6h_25mm	4:10	2.541
25mm_SCS_6h_25mm	4:15	2.541
25mm_SCS_6h_25mm	4:20	2.541
25mm_SCS_6h_25mm	4:25	2.541
25mm_SCS_6h_25mm	4:30	1.977
25mm_SCS_6h_25mm	4:35	1.977
25mm_SCS_6h_25mm	4:40	1.977
25mm_SCS_6h_25mm	4:45	1.977
25mm_SCS_6h_25mm	4:50	1.977
25mm_SCS_6h_25mm	4:55	1.977
25mm_SCS_6h_25mm	5:00	1.977
25mm_SCS_6h_25mm	5:05	1.977
25mm_SCS_6h_25mm	5:10	1.977
25mm_SCS_6h_25mm	5:15	1.977
25mm_SCS_6h_25mm	5:20	1.977
25mm_SCS_6h_25mm	5:25	1.128
25mm_SCS_6h_25mm	5:30	1.128
25mm_SCS_6h_25mm	5:35	1.128
25mm_SCS_6h_25mm	5:40	1.128
25mm_SCS_6h_25mm	5:45	1.128
25mm_SCS_6h_25mm	5:50	1.128
25mm_SCS_6h_25mm	5:55	1.128
25mm_SCS_6h_25mm	6:00	0

;SCS_24h_Type_II_107.5mm design storm, total rainfall = 107.5 mm, rain units = mm/hr.

25yr_SCS_24h_Type_II_107.5mm	0:00	1.182
25yr_SCS_24h_Type_II_107.5mm	0:15	1.182

City of Barrie - Hewitt's Secondary Plan Area Environment Assessment (EA)
Drainage and Stormwater Management Study

25yr_SCS_24h_Type_II_107.5mm	0:30	1.182
25yr_SCS_24h_Type_II_107.5mm	0:45	1.182
25yr_SCS_24h_Type_II_107.5mm	1:00	1.182
25yr_SCS_24h_Type_II_107.5mm	1:15	1.182
25yr_SCS_24h_Type_II_107.5mm	1:30	1.182
25yr_SCS_24h_Type_II_107.5mm	1:45	1.182
25yr_SCS_24h_Type_II_107.5mm	2:00	1.398
25yr_SCS_24h_Type_II_107.5mm	2:15	1.398
25yr_SCS_24h_Type_II_107.5mm	2:30	1.398
25yr_SCS_24h_Type_II_107.5mm	2:45	1.398
25yr_SCS_24h_Type_II_107.5mm	3:00	1.398
25yr_SCS_24h_Type_II_107.5mm	3:15	1.398
25yr_SCS_24h_Type_II_107.5mm	3:30	1.398
25yr_SCS_24h_Type_II_107.5mm	3:45	1.398
25yr_SCS_24h_Type_II_107.5mm	4:00	1.72
25yr_SCS_24h_Type_II_107.5mm	4:15	1.72
25yr_SCS_24h_Type_II_107.5mm	4:30	1.72
25yr_SCS_24h_Type_II_107.5mm	4:45	1.72
25yr_SCS_24h_Type_II_107.5mm	5:00	1.72
25yr_SCS_24h_Type_II_107.5mm	5:15	1.72
25yr_SCS_24h_Type_II_107.5mm	5:30	1.72
25yr_SCS_24h_Type_II_107.5mm	5:45	1.72
25yr_SCS_24h_Type_II_107.5mm	6:00	1.935
25yr_SCS_24h_Type_II_107.5mm	6:15	1.935
25yr_SCS_24h_Type_II_107.5mm	6:30	1.935
25yr_SCS_24h_Type_II_107.5mm	6:45	1.935
25yr_SCS_24h_Type_II_107.5mm	7:00	2.365
25yr_SCS_24h_Type_II_107.5mm	7:15	2.365

City of Barrie - Hewitt's Secondary Plan Area Environment Assessment (EA)
Drainage and Stormwater Management Study

25yr_SCS_24h_Type_II_107.5mm	7:30	2.365
25yr_SCS_24h_Type_II_107.5mm	7:45	2.365
25yr_SCS_24h_Type_II_107.5mm	8:00	2.795
25yr_SCS_24h_Type_II_107.5mm	8:15	2.795
25yr_SCS_24h_Type_II_107.5mm	8:30	3.01
25yr_SCS_24h_Type_II_107.5mm	8:45	3.01
25yr_SCS_24h_Type_II_107.5mm	9:00	3.44
25yr_SCS_24h_Type_II_107.5mm	9:15	3.44
25yr_SCS_24h_Type_II_107.5mm	9:30	3.87
25yr_SCS_24h_Type_II_107.5mm	9:45	3.87
25yr_SCS_24h_Type_II_107.5mm	10:00	4.945
25yr_SCS_24h_Type_II_107.5mm	10:15	4.945
25yr_SCS_24h_Type_II_107.5mm	10:30	6.665
25yr_SCS_24h_Type_II_107.5mm	10:45	6.665
25yr_SCS_24h_Type_II_107.5mm	11:00	10.32
25yr_SCS_24h_Type_II_107.5mm	11:15	10.32
25yr_SCS_24h_Type_II_107.5mm	11:30	31.82
25yr_SCS_24h_Type_II_107.5mm	11:45	131.58
25yr_SCS_24h_Type_II_107.5mm	12:00	15.48
25yr_SCS_24h_Type_II_107.5mm	12:15	15.48
25yr_SCS_24h_Type_II_107.5mm	12:30	7.955
25yr_SCS_24h_Type_II_107.5mm	12:45	7.955
25yr_SCS_24h_Type_II_107.5mm	13:00	5.805
25yr_SCS_24h_Type_II_107.5mm	13:15	5.805
25yr_SCS_24h_Type_II_107.5mm	13:30	4.515
25yr_SCS_24h_Type_II_107.5mm	13:45	4.515
25yr_SCS_24h_Type_II_107.5mm	14:00	3.225
25yr_SCS_24h_Type_II_107.5mm	14:15	3.225

City of Barrie - Hewitt's Secondary Plan Area Environment Assessment (EA)
Drainage and Stormwater Management Study

25yr_SCS_24h_Type_II_107.5mm	14:30	3.225
25yr_SCS_24h_Type_II_107.5mm	14:45	3.225
25yr_SCS_24h_Type_II_107.5mm	15:00	3.225
25yr_SCS_24h_Type_II_107.5mm	15:15	3.225
25yr_SCS_24h_Type_II_107.5mm	15:30	3.225
25yr_SCS_24h_Type_II_107.5mm	15:45	3.225
25yr_SCS_24h_Type_II_107.5mm	16:00	1.935
25yr_SCS_24h_Type_II_107.5mm	16:15	1.935
25yr_SCS_24h_Type_II_107.5mm	16:30	1.935
25yr_SCS_24h_Type_II_107.5mm	16:45	1.935
25yr_SCS_24h_Type_II_107.5mm	17:00	1.935
25yr_SCS_24h_Type_II_107.5mm	17:15	1.935
25yr_SCS_24h_Type_II_107.5mm	17:30	1.935
25yr_SCS_24h_Type_II_107.5mm	17:45	1.935
25yr_SCS_24h_Type_II_107.5mm	18:00	1.935
25yr_SCS_24h_Type_II_107.5mm	18:15	1.935
25yr_SCS_24h_Type_II_107.5mm	18:30	1.935
25yr_SCS_24h_Type_II_107.5mm	18:45	1.935
25yr_SCS_24h_Type_II_107.5mm	19:00	1.935
25yr_SCS_24h_Type_II_107.5mm	19:15	1.935
25yr_SCS_24h_Type_II_107.5mm	19:30	1.935
25yr_SCS_24h_Type_II_107.5mm	19:45	1.935
25yr_SCS_24h_Type_II_107.5mm	20:00	1.29
25yr_SCS_24h_Type_II_107.5mm	20:15	1.29
25yr_SCS_24h_Type_II_107.5mm	20:30	1.29
25yr_SCS_24h_Type_II_107.5mm	20:45	1.29
25yr_SCS_24h_Type_II_107.5mm	21:00	1.29
25yr_SCS_24h_Type_II_107.5mm	21:15	1.29

City of Barrie - Hewitt's Secondary Plan Area Environment Assessment (EA)
Drainage and Stormwater Management Study

25yr_SCS_24h_Type_II_107.5mm	21:30	1.29
25yr_SCS_24h_Type_II_107.5mm	21:45	1.29
25yr_SCS_24h_Type_II_107.5mm	22:00	1.29
25yr_SCS_24h_Type_II_107.5mm	22:15	1.29
25yr_SCS_24h_Type_II_107.5mm	22:30	1.29
25yr_SCS_24h_Type_II_107.5mm	22:45	1.29
25yr_SCS_24h_Type_II_107.5mm	23:00	1.29
25yr_SCS_24h_Type_II_107.5mm	23:15	1.29
25yr_SCS_24h_Type_II_107.5mm	23:30	1.29
25yr_SCS_24h_Type_II_107.5mm	23:45	1.29
25yr_SCS_24h_Type_II_107.5mm	24:00	0

;SCS_6h_85.2mm design storm, total rainfall = 85.2 mm, rain units = mm/hr.

25yr_SCS_6h_85.2mm	0:00	5.777
25yr_SCS_6h_85.2mm	0:05	5.777
25yr_SCS_6h_85.2mm	0:10	5.777
25yr_SCS_6h_85.2mm	0:15	5.777
25yr_SCS_6h_85.2mm	0:20	5.777
25yr_SCS_6h_85.2mm	0:25	5.777
25yr_SCS_6h_85.2mm	0:30	5.777
25yr_SCS_6h_85.2mm	0:35	8.66
25yr_SCS_6h_85.2mm	0:40	8.66
25yr_SCS_6h_85.2mm	0:45	8.66
25yr_SCS_6h_85.2mm	0:50	8.66
25yr_SCS_6h_85.2mm	0:55	8.66
25yr_SCS_6h_85.2mm	1:00	8.66
25yr_SCS_6h_85.2mm	1:05	8.66
25yr_SCS_6h_85.2mm	1:10	11.543

City of Barrie - Hewitt's Secondary Plan Area Environment Assessment (EA)
Drainage and Stormwater Management Study

25yr_SCS_6h_85.2mm	1:15	11.543
25yr_SCS_6h_85.2mm	1:20	11.543
25yr_SCS_6h_85.2mm	1:25	11.543
25yr_SCS_6h_85.2mm	1:30	14.426
25yr_SCS_6h_85.2mm	1:35	14.426
25yr_SCS_6h_85.2mm	1:40	14.426
25yr_SCS_6h_85.2mm	1:45	14.426
25yr_SCS_6h_85.2mm	1:50	34.629
25yr_SCS_6h_85.2mm	1:55	34.629
25yr_SCS_6h_85.2mm	2:00	34.629
25yr_SCS_6h_85.2mm	2:05	62.52
25yr_SCS_6h_85.2mm	2:10	62.52
25yr_SCS_6h_85.2mm	2:15	64.922
25yr_SCS_6h_85.2mm	2:20	64.922
25yr_SCS_6h_85.2mm	2:25	50.496
25yr_SCS_6h_85.2mm	2:30	21.644
25yr_SCS_6h_85.2mm	2:35	21.644
25yr_SCS_6h_85.2mm	2:40	21.644
25yr_SCS_6h_85.2mm	2:45	14.426
25yr_SCS_6h_85.2mm	2:50	14.426
25yr_SCS_6h_85.2mm	2:55	14.426
25yr_SCS_6h_85.2mm	3:00	14.426
25yr_SCS_6h_85.2mm	3:05	14.426
25yr_SCS_6h_85.2mm	3:10	14.426
25yr_SCS_6h_85.2mm	3:15	14.426
25yr_SCS_6h_85.2mm	3:20	11.543
25yr_SCS_6h_85.2mm	3:25	11.543
25yr_SCS_6h_85.2mm	3:30	11.543

City of Barrie - Hewitt's Secondary Plan Area Environment Assessment (EA)
Drainage and Stormwater Management Study

25yr_SCS_6h_85.2mm	3:35	11.543
25yr_SCS_6h_85.2mm	3:40	11.543
25yr_SCS_6h_85.2mm	3:45	11.543
25yr_SCS_6h_85.2mm	3:50	11.543
25yr_SCS_6h_85.2mm	3:55	8.66
25yr_SCS_6h_85.2mm	4:00	8.66
25yr_SCS_6h_85.2mm	4:05	8.66
25yr_SCS_6h_85.2mm	4:10	8.66
25yr_SCS_6h_85.2mm	4:15	8.66
25yr_SCS_6h_85.2mm	4:20	8.66
25yr_SCS_6h_85.2mm	4:25	8.66
25yr_SCS_6h_85.2mm	4:30	6.738
25yr_SCS_6h_85.2mm	4:35	6.738
25yr_SCS_6h_85.2mm	4:40	6.738
25yr_SCS_6h_85.2mm	4:45	6.738
25yr_SCS_6h_85.2mm	4:50	6.738
25yr_SCS_6h_85.2mm	4:55	6.738
25yr_SCS_6h_85.2mm	5:00	6.738
25yr_SCS_6h_85.2mm	5:05	6.738
25yr_SCS_6h_85.2mm	5:10	6.738
25yr_SCS_6h_85.2mm	5:15	6.738
25yr_SCS_6h_85.2mm	5:20	6.738
25yr_SCS_6h_85.2mm	5:25	3.844
25yr_SCS_6h_85.2mm	5:30	3.844
25yr_SCS_6h_85.2mm	5:35	3.844
25yr_SCS_6h_85.2mm	5:40	3.844
25yr_SCS_6h_85.2mm	5:45	3.844
25yr_SCS_6h_85.2mm	5:50	3.844

City of Barrie - Hewitt's Secondary Plan Area Environment Assessment (EA)
Drainage and Stormwater Management Study

25yr_SCS_6h_85.2mm	5:55	3.844
25yr_SCS_6h_85.2mm	6:00	0

;SCS_24h_Type_II_55mm design storm, total rainfall = 55 mm, rain units = mm/hr.

2yr_SCS_24h_Type_II_55mm	0:00	0.605
2yr_SCS_24h_Type_II_55mm	0:15	0.605
2yr_SCS_24h_Type_II_55mm	0:30	0.605
2yr_SCS_24h_Type_II_55mm	0:45	0.605
2yr_SCS_24h_Type_II_55mm	1:00	0.605
2yr_SCS_24h_Type_II_55mm	1:15	0.605
2yr_SCS_24h_Type_II_55mm	1:30	0.605
2yr_SCS_24h_Type_II_55mm	1:45	0.605
2yr_SCS_24h_Type_II_55mm	2:00	0.715
2yr_SCS_24h_Type_II_55mm	2:15	0.715
2yr_SCS_24h_Type_II_55mm	2:30	0.715
2yr_SCS_24h_Type_II_55mm	2:45	0.715
2yr_SCS_24h_Type_II_55mm	3:00	0.715
2yr_SCS_24h_Type_II_55mm	3:15	0.715
2yr_SCS_24h_Type_II_55mm	3:30	0.715
2yr_SCS_24h_Type_II_55mm	3:45	0.715
2yr_SCS_24h_Type_II_55mm	4:00	0.88
2yr_SCS_24h_Type_II_55mm	4:15	0.88
2yr_SCS_24h_Type_II_55mm	4:30	0.88
2yr_SCS_24h_Type_II_55mm	4:45	0.88
2yr_SCS_24h_Type_II_55mm	5:00	0.88
2yr_SCS_24h_Type_II_55mm	5:15	0.88
2yr_SCS_24h_Type_II_55mm	5:30	0.88
2yr_SCS_24h_Type_II_55mm	5:45	0.88

City of Barrie - Hewitt's Secondary Plan Area Environment Assessment (EA)
Drainage and Stormwater Management Study

2yr_SCS_24h_Type_II_55mm	6:00	0.99
2yr_SCS_24h_Type_II_55mm	6:15	0.99
2yr_SCS_24h_Type_II_55mm	6:30	0.99
2yr_SCS_24h_Type_II_55mm	6:45	0.99
2yr_SCS_24h_Type_II_55mm	7:00	1.21
2yr_SCS_24h_Type_II_55mm	7:15	1.21
2yr_SCS_24h_Type_II_55mm	7:30	1.21
2yr_SCS_24h_Type_II_55mm	7:45	1.21
2yr_SCS_24h_Type_II_55mm	8:00	1.43
2yr_SCS_24h_Type_II_55mm	8:15	1.43
2yr_SCS_24h_Type_II_55mm	8:30	1.54
2yr_SCS_24h_Type_II_55mm	8:45	1.54
2yr_SCS_24h_Type_II_55mm	9:00	1.76
2yr_SCS_24h_Type_II_55mm	9:15	1.76
2yr_SCS_24h_Type_II_55mm	9:30	1.98
2yr_SCS_24h_Type_II_55mm	9:45	1.98
2yr_SCS_24h_Type_II_55mm	10:00	2.53
2yr_SCS_24h_Type_II_55mm	10:15	2.53
2yr_SCS_24h_Type_II_55mm	10:30	3.41
2yr_SCS_24h_Type_II_55mm	10:45	3.41
2yr_SCS_24h_Type_II_55mm	11:00	5.28
2yr_SCS_24h_Type_II_55mm	11:15	5.28
2yr_SCS_24h_Type_II_55mm	11:30	16.28
2yr_SCS_24h_Type_II_55mm	11:45	67.32
2yr_SCS_24h_Type_II_55mm	12:00	7.92
2yr_SCS_24h_Type_II_55mm	12:15	7.92
2yr_SCS_24h_Type_II_55mm	12:30	4.07
2yr_SCS_24h_Type_II_55mm	12:45	4.07

City of Barrie - Hewitt's Secondary Plan Area Environment Assessment (EA)
Drainage and Stormwater Management Study

2yr_SCS_24h_Type_II_55mm	13:00	2.97
2yr_SCS_24h_Type_II_55mm	13:15	2.97
2yr_SCS_24h_Type_II_55mm	13:30	2.31
2yr_SCS_24h_Type_II_55mm	13:45	2.31
2yr_SCS_24h_Type_II_55mm	14:00	1.65
2yr_SCS_24h_Type_II_55mm	14:15	1.65
2yr_SCS_24h_Type_II_55mm	14:30	1.65
2yr_SCS_24h_Type_II_55mm	14:45	1.65
2yr_SCS_24h_Type_II_55mm	15:00	1.65
2yr_SCS_24h_Type_II_55mm	15:15	1.65
2yr_SCS_24h_Type_II_55mm	15:30	1.65
2yr_SCS_24h_Type_II_55mm	15:45	1.65
2yr_SCS_24h_Type_II_55mm	16:00	0.99
2yr_SCS_24h_Type_II_55mm	16:15	0.99
2yr_SCS_24h_Type_II_55mm	16:30	0.99
2yr_SCS_24h_Type_II_55mm	16:45	0.99
2yr_SCS_24h_Type_II_55mm	17:00	0.99
2yr_SCS_24h_Type_II_55mm	17:15	0.99
2yr_SCS_24h_Type_II_55mm	17:30	0.99
2yr_SCS_24h_Type_II_55mm	17:45	0.99
2yr_SCS_24h_Type_II_55mm	18:00	0.99
2yr_SCS_24h_Type_II_55mm	18:15	0.99
2yr_SCS_24h_Type_II_55mm	18:30	0.99
2yr_SCS_24h_Type_II_55mm	18:45	0.99
2yr_SCS_24h_Type_II_55mm	19:00	0.99
2yr_SCS_24h_Type_II_55mm	19:15	0.99
2yr_SCS_24h_Type_II_55mm	19:30	0.99
2yr_SCS_24h_Type_II_55mm	19:45	0.99

City of Barrie - Hewitt's Secondary Plan Area Environment Assessment (EA)
Drainage and Stormwater Management Study

2yr_SCS_24h_Type_II_55mm	20:00	0.66
2yr_SCS_24h_Type_II_55mm	20:15	0.66
2yr_SCS_24h_Type_II_55mm	20:30	0.66
2yr_SCS_24h_Type_II_55mm	20:45	0.66
2yr_SCS_24h_Type_II_55mm	21:00	0.66
2yr_SCS_24h_Type_II_55mm	21:15	0.66
2yr_SCS_24h_Type_II_55mm	21:30	0.66
2yr_SCS_24h_Type_II_55mm	21:45	0.66
2yr_SCS_24h_Type_II_55mm	22:00	0.66
2yr_SCS_24h_Type_II_55mm	22:15	0.66
2yr_SCS_24h_Type_II_55mm	22:30	0.66
2yr_SCS_24h_Type_II_55mm	22:45	0.66
2yr_SCS_24h_Type_II_55mm	23:00	0.66
2yr_SCS_24h_Type_II_55mm	23:15	0.66
2yr_SCS_24h_Type_II_55mm	23:30	0.66
2yr_SCS_24h_Type_II_55mm	23:45	0.66
2yr_SCS_24h_Type_II_55mm	24:00	0

;SCS_6h_42.3mm design storm, total rainfall = 42.3 mm, rain units = mm/hr.

2yr_SCS_6h_42.3mm	0:00	2.868
2yr_SCS_6h_42.3mm	0:05	2.868
2yr_SCS_6h_42.3mm	0:10	2.868
2yr_SCS_6h_42.3mm	0:15	2.868
2yr_SCS_6h_42.3mm	0:20	2.868
2yr_SCS_6h_42.3mm	0:25	2.868
2yr_SCS_6h_42.3mm	0:30	2.868
2yr_SCS_6h_42.3mm	0:35	4.299
2yr_SCS_6h_42.3mm	0:40	4.299

City of Barrie - Hewitt's Secondary Plan Area Environment Assessment (EA)
Drainage and Stormwater Management Study

2yr_SCS_6h_42.3mm	0:45	4.299
2yr_SCS_6h_42.3mm	0:50	4.299
2yr_SCS_6h_42.3mm	0:55	4.299
2yr_SCS_6h_42.3mm	1:00	4.299
2yr_SCS_6h_42.3mm	1:05	4.299
2yr_SCS_6h_42.3mm	1:10	5.731
2yr_SCS_6h_42.3mm	1:15	5.731
2yr_SCS_6h_42.3mm	1:20	5.731
2yr_SCS_6h_42.3mm	1:25	5.731
2yr_SCS_6h_42.3mm	1:30	7.162
2yr_SCS_6h_42.3mm	1:35	7.162
2yr_SCS_6h_42.3mm	1:40	7.162
2yr_SCS_6h_42.3mm	1:45	7.162
2yr_SCS_6h_42.3mm	1:50	17.192
2yr_SCS_6h_42.3mm	1:55	17.192
2yr_SCS_6h_42.3mm	2:00	17.192
2yr_SCS_6h_42.3mm	2:05	31.04
2yr_SCS_6h_42.3mm	2:10	31.04
2yr_SCS_6h_42.3mm	2:15	32.233
2yr_SCS_6h_42.3mm	2:20	32.233
2yr_SCS_6h_42.3mm	2:25	25.07
2yr_SCS_6h_42.3mm	2:30	10.746
2yr_SCS_6h_42.3mm	2:35	10.746
2yr_SCS_6h_42.3mm	2:40	10.746
2yr_SCS_6h_42.3mm	2:45	7.162
2yr_SCS_6h_42.3mm	2:50	7.162
2yr_SCS_6h_42.3mm	2:55	7.162
2yr_SCS_6h_42.3mm	3:00	7.162

City of Barrie - Hewitt's Secondary Plan Area Environment Assessment (EA)
Drainage and Stormwater Management Study

2yr_SCS_6h_42.3mm	3:05	7.162
2yr_SCS_6h_42.3mm	3:10	7.162
2yr_SCS_6h_42.3mm	3:15	7.162
2yr_SCS_6h_42.3mm	3:20	5.731
2yr_SCS_6h_42.3mm	3:25	5.731
2yr_SCS_6h_42.3mm	3:30	5.731
2yr_SCS_6h_42.3mm	3:35	5.731
2yr_SCS_6h_42.3mm	3:40	5.731
2yr_SCS_6h_42.3mm	3:45	5.731
2yr_SCS_6h_42.3mm	3:50	5.731
2yr_SCS_6h_42.3mm	3:55	4.299
2yr_SCS_6h_42.3mm	4:00	4.299
2yr_SCS_6h_42.3mm	4:05	4.299
2yr_SCS_6h_42.3mm	4:10	4.299
2yr_SCS_6h_42.3mm	4:15	4.299
2yr_SCS_6h_42.3mm	4:20	4.299
2yr_SCS_6h_42.3mm	4:25	4.299
2yr_SCS_6h_42.3mm	4:30	3.345
2yr_SCS_6h_42.3mm	4:35	3.345
2yr_SCS_6h_42.3mm	4:40	3.345
2yr_SCS_6h_42.3mm	4:45	3.345
2yr_SCS_6h_42.3mm	4:50	3.345
2yr_SCS_6h_42.3mm	4:55	3.345
2yr_SCS_6h_42.3mm	5:00	3.345
2yr_SCS_6h_42.3mm	5:05	3.345
2yr_SCS_6h_42.3mm	5:10	3.345
2yr_SCS_6h_42.3mm	5:15	3.345
2yr_SCS_6h_42.3mm	5:20	3.345

City of Barrie - Hewitt's Secondary Plan Area Environment Assessment (EA)
Drainage and Stormwater Management Study

2yr_SCS_6h_42.3mm	5:25	1.909
2yr_SCS_6h_42.3mm	5:30	1.909
2yr_SCS_6h_42.3mm	5:35	1.909
2yr_SCS_6h_42.3mm	5:40	1.909
2yr_SCS_6h_42.3mm	5:45	1.909
2yr_SCS_6h_42.3mm	5:50	1.909
2yr_SCS_6h_42.3mm	5:55	1.909
2yr_SCS_6h_42.3mm	6:00	0

;SCS_24h_Type_II_120.6mm design storm, total rainfall = 120.6 mm, rain units = mm/hr.

50yr_SCS_24h_Type_II_120.6mm	0:00	1.327
50yr_SCS_24h_Type_II_120.6mm	0:15	1.327
50yr_SCS_24h_Type_II_120.6mm	0:30	1.327
50yr_SCS_24h_Type_II_120.6mm	0:45	1.327
50yr_SCS_24h_Type_II_120.6mm	1:00	1.327
50yr_SCS_24h_Type_II_120.6mm	1:15	1.327
50yr_SCS_24h_Type_II_120.6mm	1:30	1.327
50yr_SCS_24h_Type_II_120.6mm	1:45	1.327
50yr_SCS_24h_Type_II_120.6mm	2:00	1.568
50yr_SCS_24h_Type_II_120.6mm	2:15	1.568
50yr_SCS_24h_Type_II_120.6mm	2:30	1.568
50yr_SCS_24h_Type_II_120.6mm	2:45	1.568
50yr_SCS_24h_Type_II_120.6mm	3:00	1.568
50yr_SCS_24h_Type_II_120.6mm	3:15	1.568
50yr_SCS_24h_Type_II_120.6mm	3:30	1.568
50yr_SCS_24h_Type_II_120.6mm	3:45	1.568
50yr_SCS_24h_Type_II_120.6mm	4:00	1.93
50yr_SCS_24h_Type_II_120.6mm	4:15	1.93

City of Barrie - Hewitt's Secondary Plan Area Environment Assessment (EA)
Drainage and Stormwater Management Study

50yr_SCS_24h_Type_II_120.6mm	4:30	1.93
50yr_SCS_24h_Type_II_120.6mm	4:45	1.93
50yr_SCS_24h_Type_II_120.6mm	5:00	1.93
50yr_SCS_24h_Type_II_120.6mm	5:15	1.93
50yr_SCS_24h_Type_II_120.6mm	5:30	1.93
50yr_SCS_24h_Type_II_120.6mm	5:45	1.93
50yr_SCS_24h_Type_II_120.6mm	6:00	2.171
50yr_SCS_24h_Type_II_120.6mm	6:15	2.171
50yr_SCS_24h_Type_II_120.6mm	6:30	2.171
50yr_SCS_24h_Type_II_120.6mm	6:45	2.171
50yr_SCS_24h_Type_II_120.6mm	7:00	2.653
50yr_SCS_24h_Type_II_120.6mm	7:15	2.653
50yr_SCS_24h_Type_II_120.6mm	7:30	2.653
50yr_SCS_24h_Type_II_120.6mm	7:45	2.653
50yr_SCS_24h_Type_II_120.6mm	8:00	3.136
50yr_SCS_24h_Type_II_120.6mm	8:15	3.136
50yr_SCS_24h_Type_II_120.6mm	8:30	3.377
50yr_SCS_24h_Type_II_120.6mm	8:45	3.377
50yr_SCS_24h_Type_II_120.6mm	9:00	3.859
50yr_SCS_24h_Type_II_120.6mm	9:15	3.859
50yr_SCS_24h_Type_II_120.6mm	9:30	4.342
50yr_SCS_24h_Type_II_120.6mm	9:45	4.342
50yr_SCS_24h_Type_II_120.6mm	10:00	5.548
50yr_SCS_24h_Type_II_120.6mm	10:15	5.548
50yr_SCS_24h_Type_II_120.6mm	10:30	7.477
50yr_SCS_24h_Type_II_120.6mm	10:45	7.477
50yr_SCS_24h_Type_II_120.6mm	11:00	11.578
50yr_SCS_24h_Type_II_120.6mm	11:15	11.578

City of Barrie - Hewitt's Secondary Plan Area Environment Assessment (EA)
Drainage and Stormwater Management Study

50yr_SCS_24h_Type_II_120.6mm	11:30	35.698
50yr_SCS_24h_Type_II_120.6mm	11:45	147.614
50yr_SCS_24h_Type_II_120.6mm	12:00	17.366
50yr_SCS_24h_Type_II_120.6mm	12:15	17.366
50yr_SCS_24h_Type_II_120.6mm	12:30	8.924
50yr_SCS_24h_Type_II_120.6mm	12:45	8.924
50yr_SCS_24h_Type_II_120.6mm	13:00	6.512
50yr_SCS_24h_Type_II_120.6mm	13:15	6.512
50yr_SCS_24h_Type_II_120.6mm	13:30	5.065
50yr_SCS_24h_Type_II_120.6mm	13:45	5.065
50yr_SCS_24h_Type_II_120.6mm	14:00	3.618
50yr_SCS_24h_Type_II_120.6mm	14:15	3.618
50yr_SCS_24h_Type_II_120.6mm	14:30	3.618
50yr_SCS_24h_Type_II_120.6mm	14:45	3.618
50yr_SCS_24h_Type_II_120.6mm	15:00	3.618
50yr_SCS_24h_Type_II_120.6mm	15:15	3.618
50yr_SCS_24h_Type_II_120.6mm	15:30	3.618
50yr_SCS_24h_Type_II_120.6mm	15:45	3.618
50yr_SCS_24h_Type_II_120.6mm	16:00	2.171
50yr_SCS_24h_Type_II_120.6mm	16:15	2.171
50yr_SCS_24h_Type_II_120.6mm	16:30	2.171
50yr_SCS_24h_Type_II_120.6mm	16:45	2.171
50yr_SCS_24h_Type_II_120.6mm	17:00	2.171
50yr_SCS_24h_Type_II_120.6mm	17:15	2.171
50yr_SCS_24h_Type_II_120.6mm	17:30	2.171
50yr_SCS_24h_Type_II_120.6mm	17:45	2.171
50yr_SCS_24h_Type_II_120.6mm	18:00	2.171
50yr_SCS_24h_Type_II_120.6mm	18:15	2.171

City of Barrie - Hewitt's Secondary Plan Area Environment Assessment (EA)
Drainage and Stormwater Management Study

50yr_SCS_24h_Type_II_120.6mm	18:30	2.171
50yr_SCS_24h_Type_II_120.6mm	18:45	2.171
50yr_SCS_24h_Type_II_120.6mm	19:00	2.171
50yr_SCS_24h_Type_II_120.6mm	19:15	2.171
50yr_SCS_24h_Type_II_120.6mm	19:30	2.171
50yr_SCS_24h_Type_II_120.6mm	19:45	2.171
50yr_SCS_24h_Type_II_120.6mm	20:00	1.447
50yr_SCS_24h_Type_II_120.6mm	20:15	1.447
50yr_SCS_24h_Type_II_120.6mm	20:30	1.447
50yr_SCS_24h_Type_II_120.6mm	20:45	1.447
50yr_SCS_24h_Type_II_120.6mm	21:00	1.447
50yr_SCS_24h_Type_II_120.6mm	21:15	1.447
50yr_SCS_24h_Type_II_120.6mm	21:30	1.447
50yr_SCS_24h_Type_II_120.6mm	21:45	1.447
50yr_SCS_24h_Type_II_120.6mm	22:00	1.447
50yr_SCS_24h_Type_II_120.6mm	22:15	1.447
50yr_SCS_24h_Type_II_120.6mm	22:30	1.447
50yr_SCS_24h_Type_II_120.6mm	22:45	1.447
50yr_SCS_24h_Type_II_120.6mm	23:00	1.447
50yr_SCS_24h_Type_II_120.6mm	23:15	1.447
50yr_SCS_24h_Type_II_120.6mm	23:30	1.447
50yr_SCS_24h_Type_II_120.6mm	23:45	1.447
50yr_SCS_24h_Type_II_120.6mm	24:00	0

;SCS_6h_95.9mm design storm, total rainfall = 95.9 mm, rain units = mm/hr.

50yr_SCS_6h_95.9mm	0:00	6.502
50yr_SCS_6h_95.9mm	0:05	6.502
50yr_SCS_6h_95.9mm	0:10	6.502

City of Barrie - Hewitt's Secondary Plan Area Environment Assessment (EA)
Drainage and Stormwater Management Study

50yr_SCS_6h_95.9mm	0:15	6.502
50yr_SCS_6h_95.9mm	0:20	6.502
50yr_SCS_6h_95.9mm	0:25	6.502
50yr_SCS_6h_95.9mm	0:30	6.502
50yr_SCS_6h_95.9mm	0:35	9.747
50yr_SCS_6h_95.9mm	0:40	9.747
50yr_SCS_6h_95.9mm	0:45	9.747
50yr_SCS_6h_95.9mm	0:50	9.747
50yr_SCS_6h_95.9mm	0:55	9.747
50yr_SCS_6h_95.9mm	1:00	9.747
50yr_SCS_6h_95.9mm	1:05	9.747
50yr_SCS_6h_95.9mm	1:10	12.993
50yr_SCS_6h_95.9mm	1:15	12.993
50yr_SCS_6h_95.9mm	1:20	12.993
50yr_SCS_6h_95.9mm	1:25	12.993
50yr_SCS_6h_95.9mm	1:30	16.238
50yr_SCS_6h_95.9mm	1:35	16.238
50yr_SCS_6h_95.9mm	1:40	16.238
50yr_SCS_6h_95.9mm	1:45	16.238
50yr_SCS_6h_95.9mm	1:50	38.978
50yr_SCS_6h_95.9mm	1:55	38.978
50yr_SCS_6h_95.9mm	2:00	38.978
50yr_SCS_6h_95.9mm	2:05	70.371
50yr_SCS_6h_95.9mm	2:10	70.371
50yr_SCS_6h_95.9mm	2:15	73.076
50yr_SCS_6h_95.9mm	2:20	73.076
50yr_SCS_6h_95.9mm	2:25	56.838
50yr_SCS_6h_95.9mm	2:30	24.362

City of Barrie - Hewitt's Secondary Plan Area Environment Assessment (EA)
Drainage and Stormwater Management Study

50yr_SCS_6h_95.9mm	2:35	24.362
50yr_SCS_6h_95.9mm	2:40	24.362
50yr_SCS_6h_95.9mm	2:45	16.238
50yr_SCS_6h_95.9mm	2:50	16.238
50yr_SCS_6h_95.9mm	2:55	16.238
50yr_SCS_6h_95.9mm	3:00	16.238
50yr_SCS_6h_95.9mm	3:05	16.238
50yr_SCS_6h_95.9mm	3:10	16.238
50yr_SCS_6h_95.9mm	3:15	16.238
50yr_SCS_6h_95.9mm	3:20	12.993
50yr_SCS_6h_95.9mm	3:25	12.993
50yr_SCS_6h_95.9mm	3:30	12.993
50yr_SCS_6h_95.9mm	3:35	12.993
50yr_SCS_6h_95.9mm	3:40	12.993
50yr_SCS_6h_95.9mm	3:45	12.993
50yr_SCS_6h_95.9mm	3:50	12.993
50yr_SCS_6h_95.9mm	3:55	9.747
50yr_SCS_6h_95.9mm	4:00	9.747
50yr_SCS_6h_95.9mm	4:05	9.747
50yr_SCS_6h_95.9mm	4:10	9.747
50yr_SCS_6h_95.9mm	4:15	9.747
50yr_SCS_6h_95.9mm	4:20	9.747
50yr_SCS_6h_95.9mm	4:25	9.747
50yr_SCS_6h_95.9mm	4:30	7.584
50yr_SCS_6h_95.9mm	4:35	7.584
50yr_SCS_6h_95.9mm	4:40	7.584
50yr_SCS_6h_95.9mm	4:45	7.584
50yr_SCS_6h_95.9mm	4:50	7.584

City of Barrie - Hewitt's Secondary Plan Area Environment Assessment (EA)
Drainage and Stormwater Management Study

50yr_SCS_6h_95.9mm	4:55	7.584
50yr_SCS_6h_95.9mm	5:00	7.584
50yr_SCS_6h_95.9mm	5:05	7.584
50yr_SCS_6h_95.9mm	5:10	7.584
50yr_SCS_6h_95.9mm	5:15	7.584
50yr_SCS_6h_95.9mm	5:20	7.584
50yr_SCS_6h_95.9mm	5:25	4.327
50yr_SCS_6h_95.9mm	5:30	4.327
50yr_SCS_6h_95.9mm	5:35	4.327
50yr_SCS_6h_95.9mm	5:40	4.327
50yr_SCS_6h_95.9mm	5:45	4.327
50yr_SCS_6h_95.9mm	5:50	4.327
50yr_SCS_6h_95.9mm	5:55	4.327
50yr_SCS_6h_95.9mm	6:00	0

;SCS_24h_Type_II_76mm design storm, total rainfall = 76 mm, rain units = mm/hr.

5yr_SCS_24h_Type_II_76mm	0:00	0.836
5yr_SCS_24h_Type_II_76mm	0:15	0.836
5yr_SCS_24h_Type_II_76mm	0:30	0.836
5yr_SCS_24h_Type_II_76mm	0:45	0.836
5yr_SCS_24h_Type_II_76mm	1:00	0.836
5yr_SCS_24h_Type_II_76mm	1:15	0.836
5yr_SCS_24h_Type_II_76mm	1:30	0.836
5yr_SCS_24h_Type_II_76mm	1:45	0.836
5yr_SCS_24h_Type_II_76mm	2:00	0.988
5yr_SCS_24h_Type_II_76mm	2:15	0.988
5yr_SCS_24h_Type_II_76mm	2:30	0.988
5yr_SCS_24h_Type_II_76mm	2:45	0.988

City of Barrie - Hewitt's Secondary Plan Area Environment Assessment (EA)
Drainage and Stormwater Management Study

5yr_SCS_24h_Type_II_76mm	3:00	0.988
5yr_SCS_24h_Type_II_76mm	3:15	0.988
5yr_SCS_24h_Type_II_76mm	3:30	0.988
5yr_SCS_24h_Type_II_76mm	3:45	0.988
5yr_SCS_24h_Type_II_76mm	4:00	1.216
5yr_SCS_24h_Type_II_76mm	4:15	1.216
5yr_SCS_24h_Type_II_76mm	4:30	1.216
5yr_SCS_24h_Type_II_76mm	4:45	1.216
5yr_SCS_24h_Type_II_76mm	5:00	1.216
5yr_SCS_24h_Type_II_76mm	5:15	1.216
5yr_SCS_24h_Type_II_76mm	5:30	1.216
5yr_SCS_24h_Type_II_76mm	5:45	1.216
5yr_SCS_24h_Type_II_76mm	6:00	1.368
5yr_SCS_24h_Type_II_76mm	6:15	1.368
5yr_SCS_24h_Type_II_76mm	6:30	1.368
5yr_SCS_24h_Type_II_76mm	6:45	1.368
5yr_SCS_24h_Type_II_76mm	7:00	1.672
5yr_SCS_24h_Type_II_76mm	7:15	1.672
5yr_SCS_24h_Type_II_76mm	7:30	1.672
5yr_SCS_24h_Type_II_76mm	7:45	1.672
5yr_SCS_24h_Type_II_76mm	8:00	1.976
5yr_SCS_24h_Type_II_76mm	8:15	1.976
5yr_SCS_24h_Type_II_76mm	8:30	2.128
5yr_SCS_24h_Type_II_76mm	8:45	2.128
5yr_SCS_24h_Type_II_76mm	9:00	2.432
5yr_SCS_24h_Type_II_76mm	9:15	2.432
5yr_SCS_24h_Type_II_76mm	9:30	2.736
5yr_SCS_24h_Type_II_76mm	9:45	2.736

City of Barrie - Hewitt's Secondary Plan Area Environment Assessment (EA)
Drainage and Stormwater Management Study

5yr_SCS_24h_Type_II_76mm	10:00	3.496
5yr_SCS_24h_Type_II_76mm	10:15	3.496
5yr_SCS_24h_Type_II_76mm	10:30	4.712
5yr_SCS_24h_Type_II_76mm	10:45	4.712
5yr_SCS_24h_Type_II_76mm	11:00	7.296
5yr_SCS_24h_Type_II_76mm	11:15	7.296
5yr_SCS_24h_Type_II_76mm	11:30	22.496
5yr_SCS_24h_Type_II_76mm	11:45	93.024
5yr_SCS_24h_Type_II_76mm	12:00	10.944
5yr_SCS_24h_Type_II_76mm	12:15	10.944
5yr_SCS_24h_Type_II_76mm	12:30	5.624
5yr_SCS_24h_Type_II_76mm	12:45	5.624
5yr_SCS_24h_Type_II_76mm	13:00	4.104
5yr_SCS_24h_Type_II_76mm	13:15	4.104
5yr_SCS_24h_Type_II_76mm	13:30	3.192
5yr_SCS_24h_Type_II_76mm	13:45	3.192
5yr_SCS_24h_Type_II_76mm	14:00	2.28
5yr_SCS_24h_Type_II_76mm	14:15	2.28
5yr_SCS_24h_Type_II_76mm	14:30	2.28
5yr_SCS_24h_Type_II_76mm	14:45	2.28
5yr_SCS_24h_Type_II_76mm	15:00	2.28
5yr_SCS_24h_Type_II_76mm	15:15	2.28
5yr_SCS_24h_Type_II_76mm	15:30	2.28
5yr_SCS_24h_Type_II_76mm	15:45	2.28
5yr_SCS_24h_Type_II_76mm	16:00	1.368
5yr_SCS_24h_Type_II_76mm	16:15	1.368
5yr_SCS_24h_Type_II_76mm	16:30	1.368
5yr_SCS_24h_Type_II_76mm	16:45	1.368

City of Barrie - Hewitt's Secondary Plan Area Environment Assessment (EA)
Drainage and Stormwater Management Study

5yr_SCS_24h_Type_II_76mm	17:00	1.368
5yr_SCS_24h_Type_II_76mm	17:15	1.368
5yr_SCS_24h_Type_II_76mm	17:30	1.368
5yr_SCS_24h_Type_II_76mm	17:45	1.368
5yr_SCS_24h_Type_II_76mm	18:00	1.368
5yr_SCS_24h_Type_II_76mm	18:15	1.368
5yr_SCS_24h_Type_II_76mm	18:30	1.368
5yr_SCS_24h_Type_II_76mm	18:45	1.368
5yr_SCS_24h_Type_II_76mm	19:00	1.368
5yr_SCS_24h_Type_II_76mm	19:15	1.368
5yr_SCS_24h_Type_II_76mm	19:30	1.368
5yr_SCS_24h_Type_II_76mm	19:45	1.368
5yr_SCS_24h_Type_II_76mm	20:00	0.912
5yr_SCS_24h_Type_II_76mm	20:15	0.912
5yr_SCS_24h_Type_II_76mm	20:30	0.912
5yr_SCS_24h_Type_II_76mm	20:45	0.912
5yr_SCS_24h_Type_II_76mm	21:00	0.912
5yr_SCS_24h_Type_II_76mm	21:15	0.912
5yr_SCS_24h_Type_II_76mm	21:30	0.912
5yr_SCS_24h_Type_II_76mm	21:45	0.912
5yr_SCS_24h_Type_II_76mm	22:00	0.912
5yr_SCS_24h_Type_II_76mm	22:15	0.912
5yr_SCS_24h_Type_II_76mm	22:30	0.912
5yr_SCS_24h_Type_II_76mm	22:45	0.912
5yr_SCS_24h_Type_II_76mm	23:00	0.912
5yr_SCS_24h_Type_II_76mm	23:15	0.912
5yr_SCS_24h_Type_II_76mm	23:30	0.912
5yr_SCS_24h_Type_II_76mm	23:45	0.912

5yr_SCS_24h_Type_II_76mm 24:00 0

;SCS_6h_59.5mm design storm, total rainfall = 59.5 mm, rain units = mm/hr.

5yr_SCS_6h_59.5mm	0:00	4.034
5yr_SCS_6h_59.5mm	0:05	4.034
5yr_SCS_6h_59.5mm	0:10	4.034
5yr_SCS_6h_59.5mm	0:15	4.034
5yr_SCS_6h_59.5mm	0:20	4.034
5yr_SCS_6h_59.5mm	0:25	4.034
5yr_SCS_6h_59.5mm	0:30	4.034
5yr_SCS_6h_59.5mm	0:35	6.048
5yr_SCS_6h_59.5mm	0:40	6.048
5yr_SCS_6h_59.5mm	0:45	6.048
5yr_SCS_6h_59.5mm	0:50	6.048
5yr_SCS_6h_59.5mm	0:55	6.048
5yr_SCS_6h_59.5mm	1:00	6.048
5yr_SCS_6h_59.5mm	1:05	6.048
5yr_SCS_6h_59.5mm	1:10	8.061
5yr_SCS_6h_59.5mm	1:15	8.061
5yr_SCS_6h_59.5mm	1:20	8.061
5yr_SCS_6h_59.5mm	1:25	8.061
5yr_SCS_6h_59.5mm	1:30	10.075
5yr_SCS_6h_59.5mm	1:35	10.075
5yr_SCS_6h_59.5mm	1:40	10.075
5yr_SCS_6h_59.5mm	1:45	10.075
5yr_SCS_6h_59.5mm	1:50	24.183
5yr_SCS_6h_59.5mm	1:55	24.183
5yr_SCS_6h_59.5mm	2:00	24.183

City of Barrie - Hewitt's Secondary Plan Area Environment Assessment (EA)
Drainage and Stormwater Management Study

5yr_SCS_6h_59.5mm	2:05	43.661
5yr_SCS_6h_59.5mm	2:10	43.661
5yr_SCS_6h_59.5mm	2:15	45.339
5yr_SCS_6h_59.5mm	2:20	45.339
5yr_SCS_6h_59.5mm	2:25	35.264
5yr_SCS_6h_59.5mm	2:30	15.115
5yr_SCS_6h_59.5mm	2:35	15.115
5yr_SCS_6h_59.5mm	2:40	15.115
5yr_SCS_6h_59.5mm	2:45	10.075
5yr_SCS_6h_59.5mm	2:50	10.075
5yr_SCS_6h_59.5mm	2:55	10.075
5yr_SCS_6h_59.5mm	3:00	10.075
5yr_SCS_6h_59.5mm	3:05	10.075
5yr_SCS_6h_59.5mm	3:10	10.075
5yr_SCS_6h_59.5mm	3:15	10.075
5yr_SCS_6h_59.5mm	3:20	8.061
5yr_SCS_6h_59.5mm	3:25	8.061
5yr_SCS_6h_59.5mm	3:30	8.061
5yr_SCS_6h_59.5mm	3:35	8.061
5yr_SCS_6h_59.5mm	3:40	8.061
5yr_SCS_6h_59.5mm	3:45	8.061
5yr_SCS_6h_59.5mm	3:50	8.061
5yr_SCS_6h_59.5mm	3:55	6.048
5yr_SCS_6h_59.5mm	4:00	6.048
5yr_SCS_6h_59.5mm	4:05	6.048
5yr_SCS_6h_59.5mm	4:10	6.048
5yr_SCS_6h_59.5mm	4:15	6.048
5yr_SCS_6h_59.5mm	4:20	6.048

City of Barrie - Hewitt's Secondary Plan Area Environment Assessment (EA)
Drainage and Stormwater Management Study

5yr_SCS_6h_59.5mm	4:25	6.048
5yr_SCS_6h_59.5mm	4:30	4.705
5yr_SCS_6h_59.5mm	4:35	4.705
5yr_SCS_6h_59.5mm	4:40	4.705
5yr_SCS_6h_59.5mm	4:45	4.705
5yr_SCS_6h_59.5mm	4:50	4.705
5yr_SCS_6h_59.5mm	4:55	4.705
5yr_SCS_6h_59.5mm	5:00	4.705
5yr_SCS_6h_59.5mm	5:05	4.705
5yr_SCS_6h_59.5mm	5:10	4.705
5yr_SCS_6h_59.5mm	5:15	4.705
5yr_SCS_6h_59.5mm	5:20	4.705
5yr_SCS_6h_59.5mm	5:25	2.685
5yr_SCS_6h_59.5mm	5:30	2.685
5yr_SCS_6h_59.5mm	5:35	2.685
5yr_SCS_6h_59.5mm	5:40	2.685
5yr_SCS_6h_59.5mm	5:45	2.685
5yr_SCS_6h_59.5mm	5:50	2.685
5yr_SCS_6h_59.5mm	5:55	2.685
5yr_SCS_6h_59.5mm	6:00	0

;Hurricane Hazel (Southern Ontario) design storm for 0 - 25 km², total rainfall = 211 mm (100%), rain units = mm/hr.

Hurricane_Hazel_(Southern_Ontario)	0	6.33
Hurricane_Hazel_(Southern_Ontario)	1	4.22
Hurricane_Hazel_(Southern_Ontario)	2	6.33
Hurricane_Hazel_(Southern_Ontario)	3	12.66
Hurricane_Hazel_(Southern_Ontario)	4	16.88

City of Barrie - Hewitt's Secondary Plan Area Environment Assessment (EA)
Drainage and Stormwater Management Study

Hurricane_Hazel_(Southern_Ontario)	5	12.66
Hurricane_Hazel_(Southern_Ontario)	6	23.21
Hurricane_Hazel_(Southern_Ontario)	7	12.66
Hurricane_Hazel_(Southern_Ontario)	8	12.66
Hurricane_Hazel_(Southern_Ontario)	9	52.75
Hurricane_Hazel_(Southern_Ontario)	10	37.98
Hurricane_Hazel_(Southern_Ontario)	11	12.66
Hurricane_Hazel_(Southern_Ontario)	12	0

NO_RAIN	0:0	0
NO_RAIN	0:5	0.1
NO_RAIN	0:10	0

;SCS_6h_1mm design storm, total rainfall = 1 mm, rain units = mm/hr.

SCS_6h_1mm_Jordan	0:00	0.0678
SCS_6h_1mm_Jordan	0:05	0.0678
SCS_6h_1mm_Jordan	0:10	0.0678
SCS_6h_1mm_Jordan	0:15	0.0678
SCS_6h_1mm_Jordan	0:20	0.0678
SCS_6h_1mm_Jordan	0:25	0.0678
SCS_6h_1mm_Jordan	0:30	0.0678
SCS_6h_1mm_Jordan	0:35	0.102
SCS_6h_1mm_Jordan	0:40	0.102
SCS_6h_1mm_Jordan	0:45	0.102
SCS_6h_1mm_Jordan	0:50	0.102
SCS_6h_1mm_Jordan	0:55	0.102
SCS_6h_1mm_Jordan	1:00	0.102
SCS_6h_1mm_Jordan	1:05	0.102

City of Barrie - Hewitt's Secondary Plan Area Environment Assessment (EA)
Drainage and Stormwater Management Study

SCS_6h_1mm_Jordan	1:10	0.135
SCS_6h_1mm_Jordan	1:15	0.135
SCS_6h_1mm_Jordan	1:20	0.135
SCS_6h_1mm_Jordan	1:25	0.135
SCS_6h_1mm_Jordan	1:30	0.169
SCS_6h_1mm_Jordan	1:35	0.169
SCS_6h_1mm_Jordan	1:40	0.169
SCS_6h_1mm_Jordan	1:45	0.169
SCS_6h_1mm_Jordan	1:50	0.406
SCS_6h_1mm_Jordan	1:55	0.406
SCS_6h_1mm_Jordan	2:00	0.406
SCS_6h_1mm_Jordan	2:05	0.734
SCS_6h_1mm_Jordan	2:10	0.734
SCS_6h_1mm_Jordan	2:15	0.762
SCS_6h_1mm_Jordan	2:20	0.762
SCS_6h_1mm_Jordan	2:25	0.593
SCS_6h_1mm_Jordan	2:30	0.254
SCS_6h_1mm_Jordan	2:35	0.254
SCS_6h_1mm_Jordan	2:40	0.254
SCS_6h_1mm_Jordan	2:45	0.169
SCS_6h_1mm_Jordan	2:50	0.169
SCS_6h_1mm_Jordan	2:55	0.169
SCS_6h_1mm_Jordan	3:00	0.169
SCS_6h_1mm_Jordan	3:05	0.169
SCS_6h_1mm_Jordan	3:10	0.169
SCS_6h_1mm_Jordan	3:15	0.169
SCS_6h_1mm_Jordan	3:20	0.135
SCS_6h_1mm_Jordan	3:25	0.135

City of Barrie - Hewitt's Secondary Plan Area Environment Assessment (EA)
Drainage and Stormwater Management Study

SCS_6h_1mm_Jordan	3:30	0.135
SCS_6h_1mm_Jordan	3:35	0.135
SCS_6h_1mm_Jordan	3:40	0.135
SCS_6h_1mm_Jordan	3:45	0.135
SCS_6h_1mm_Jordan	3:50	0.135
SCS_6h_1mm_Jordan	3:55	0.102
SCS_6h_1mm_Jordan	4:00	0.102
SCS_6h_1mm_Jordan	4:05	0.102
SCS_6h_1mm_Jordan	4:10	0.102
SCS_6h_1mm_Jordan	4:15	0.102
SCS_6h_1mm_Jordan	4:20	0.102
SCS_6h_1mm_Jordan	4:25	0.102
SCS_6h_1mm_Jordan	4:30	0.0791
SCS_6h_1mm_Jordan	4:35	0.0791
SCS_6h_1mm_Jordan	4:40	0.0791
SCS_6h_1mm_Jordan	4:45	0.0791
SCS_6h_1mm_Jordan	4:50	0.0791
SCS_6h_1mm_Jordan	4:55	0.0791
SCS_6h_1mm_Jordan	5:00	0.0791
SCS_6h_1mm_Jordan	5:05	0.0791
SCS_6h_1mm_Jordan	5:10	0.0791
SCS_6h_1mm_Jordan	5:15	0.0791
SCS_6h_1mm_Jordan	5:20	0.0791
SCS_6h_1mm_Jordan	5:25	0.0451
SCS_6h_1mm_Jordan	5:30	0.0451
SCS_6h_1mm_Jordan	5:35	0.0451
SCS_6h_1mm_Jordan	5:40	0.0451
SCS_6h_1mm_Jordan	5:45	0.0451

City of Barrie - Hewitt's Secondary Plan Area Environment Assessment (EA)
Drainage and Stormwater Management Study

SCS_6h_1mm_Jordan	5:50	0.0451
SCS_6h_1mm_Jordan	5:55	0.0451
SCS_6h_1mm_Jordan	6:00	0

[REPORT]

INPUT YES

CONTROLS NO

SUBCATCHMENTS ALL

NODES ALL

LINKS ALL

[TAGS]

[MAP]

DIMENSIONS 606333.733248916 4908994.96264225 612745.416193986
4914048.05798445

UNITS Meters

[COORDINATES]

::Node	X-Coord	Y-Coord
;-----		
BBP1	611021.01	4913493.338
BBP2	611941.319	4913802.745
Hew1	608648.027	4909837.19
Hew2	608826.481	4911301.51
Hew3	610463.218	4910453.891
Hew4	610173.659	4911746.907
Hew5	612453.976	4912521.533

City of Barrie - Hewitt's Secondary Plan Area Environment Assessment (EA)
Drainage and Stormwater Management Study

Lover's1	607119.607	4909322.963
Lover's2	607172.873	4910758.344
YSLP	609746.016	4910504.209

[VERTICES]

::Link	X-Coord	Y-Coord
;-----		

[POLYGONS]

::Subcatchment	X-Coord	Y-Coord
;-----		
BBPR.R-01	611011.526	4913510.233
BBPR.R-01	611191.448	4913568.867
BBPR.R-01	611196.737	4913577.769
BBPR.R-01	611215.05	4913580.792
BBPR.R-01	611225.952	4913579.622
BBPR.R-01	611497.89	4913666.276
BBPR.R-01	611506.571	4913635.923
BBPR.R-01	611451.785	4913618.042
BBPR.R-01	611445.839	4913607.774
BBPR.R-01	611407.29	4913594.915
BBPR.R-01	611396.353	4913598.118
BBPR.R-01	611020.977	4913474.46
BBPR.R-01	611011.526	4913510.233
BBPR.R-02	611497.05	4913666.72
BBPR.R-02	611947.283	4913818.372
BBPR.R-02	611948.399	4913800.599
BBPR.R-02	611833.176	4913752.526

City of Barrie - Hewitt's Secondary Plan Area Environment Assessment (EA)
Drainage and Stormwater Management Study

BBPR.R-02	611815.467	4913744.135
BBPR.R-02	611508.906	4913637.798
BBPR.R-02	611497.05	4913666.72
LR.R-01	606904.484	4909296.359
LR.R-01	606919.725	4909287.756
LR.R-01	606976.747	4909304.18
LR.R-01	607035.589	4909317.978
LR.R-01	607109.825	4909340.881
LR.R-01	607123.682	4909308.357
LR.R-01	607023.416	4909274.848
LR.R-01	606921.81	4909241.761
LR.R-01	606919.211	4909237.735
LR.R-01	606920.309	4909224.918
LR.R-01	606903.881	4909224.649
LR.R-01	606886.818	4909290.326
LR.R-01	606904.484	4909296.359
LR.R-02	607110.706	4909341.348
LR.R-02	607384.988	4909433.471
LR.R-02	607645.565	4909521.406
LR.R-02	608040.403	4909654.055
LR.R-02	608052.051	4909621.054
LR.R-02	607658.551	4909487.983
LR.R-02	607477.884	4909428.802
LR.R-02	607124.133	4909307.922
LR.R-02	607110.706	4909341.348
LR.R-03	608040.451	4909652.312
LR.R-03	608625.074	4909851.508
LR.R-03	608636.487	4909819.872

City of Barrie - Hewitt's Secondary Plan Area Environment Assessment (EA)
Drainage and Stormwater Management Study

LR.R-03	608051.136	4909620.652
LR.R-03	608040.451	4909652.312
LR.R-04	608627.655	4909852.14
LR.R-04	609111.075	4910014.959
LR.R-04	609758.01	4910239.222
LR.R-04	609761.023	4910244.421
LR.R-04	609778.861	4910228.245
LR.R-04	609812.777	4910239.112
LR.R-04	609810.278	4910264.814
LR.R-04	609824.844	4910258.881
LR.R-04	610104.296	4910354.201
LR.R-04	610125.511	4910321.607
LR.R-04	609828.566	4910221.872
LR.R-04	609817.324	4910214.475
LR.R-04	609816.447	4910205.192
LR.R-04	609784.614	4910193.33
LR.R-04	609771.029	4910202.369
LR.R-04	609116.503	4909981.333
LR.R-04	608638.668	4909820.962
LR.R-04	608627.655	4909852.14
LR.R-05	610102.083	4910357.806
LR.R-05	610459.339	4910471.948
LR.R-05	610472.204	4910440.221
LR.R-05	610127.314	4910323.819
LR.R-05	610102.083	4910357.806
LR.R-06	610462.474	4910474.602
LR.R-06	611044.274	4910667.537
LR.R-06	611537.658	4910828.7

City of Barrie - Hewitt's Secondary Plan Area Environment Assessment (EA)
Drainage and Stormwater Management Study

LR.R-06	611559.864	4910830.245
LR.R-06	611577.649	4910816.556
LR.R-06	611567.301	4910805.884
LR.R-06	611044.869	4910632.563
LR.R-06	610474.744	4910440.982
LR.R-06	610462.474	4910474.602
MD.R-01	606641.267	4910533.825
MD.R-01	606625.173	4910609.56
MD.R-01	606644.914	4910613.83
MD.R-01	606646.065	4910603.978
MD.R-01	606656.974	4910603.169
MD.R-01	607170.263	4910771.476
MD.R-01	607183.8	4910731.228
MD.R-01	606666.546	4910562.854
MD.R-01	606656.837	4910550.851
MD.R-01	606660.959	4910541.047
MD.R-01	606641.267	4910533.825
MD.R-02	607175.23	4910770.58
MD.R-02	607356.586	4910824.876
MD.R-02	607365.319	4910835.877
MD.R-02	607374.199	4910837.997
MD.R-02	607381.13	4910838.111
MD.R-02	607604.768	4910910.885
MD.R-02	607611.585	4910917.907
MD.R-02	607626.389	4910921.112
MD.R-02	607640.349	4910915.42
MD.R-02	608099.312	4911072.042
MD.R-02	608104.149	4911079.031

City of Barrie - Hewitt's Secondary Plan Area Environment Assessment (EA)
Drainage and Stormwater Management Study

MD.R-02	608142.667	4911085.591
MD.R-02	608565.234	4911225.849
MD.R-02	608576.65	4911194.454
MD.R-02	608218.214	4911069.076
MD.R-02	607777.904	4910922.623
MD.R-02	607385.837	4910792.784
MD.R-02	607367.169	4910783.593
MD.R-02	607184.725	4910735.192
MD.R-02	607175.23	4910770.58
MD.R-03	608568.017	4911225.192
MD.R-03	608621.476	4911242.877
MD.R-03	608624.48	4911252.381
MD.R-03	608645.431	4911260.082
MD.R-03	608652.947	4911251.804
MD.R-03	608925.505	4911340.371
MD.R-03	608937.638	4911308.013
MD.R-03	608580.149	4911192.823
MD.R-03	608568.017	4911225.192
MD.R-04	608928.683	4911339.383
MD.R-04	609056.548	4911382.471
MD.R-04	609056.425	4911389.821
MD.R-04	609072.178	4911393.235
MD.R-04	609085.963	4911388.214
MD.R-04	609192.788	4911428.861
MD.R-04	609202.832	4911395.418
MD.R-04	608938.657	4911310.13
MD.R-04	608928.683	4911339.383
MD.R-05	609272.444	4911455.401

City of Barrie - Hewitt's Secondary Plan Area Environment Assessment (EA)
Drainage and Stormwater Management Study

MD.R-05	609273.78	4911462.308
MD.R-05	609360.248	4911498.884
MD.R-05	609374.718	4911515.931
MD.R-05	609399.935	4911520.555
MD.R-05	609420.902	4911527.208
MD.R-05	609860.225	4911662.721
MD.R-05	610162.022	4911765.482
MD.R-05	610176.339	4911728.963
MD.R-05	609910.117	4911641.504
MD.R-05	609635.494	4911551.813
MD.R-05	609613.42	4911548.292
MD.R-05	609444.804	4911484.545
MD.R-05	609393.421	4911468.98
MD.R-05	609360.987	4911454.782
MD.R-05	609236.374	4911406.483
MD.R-05	609203.851	4911397.536
MD.R-05	609193.215	4911429.426
MD.R-05	609272.444	4911455.401
MD.R-06	610164.292	4911762.192
MD.R-06	611348.13	4912167.676
MD.R-06	611634.19	4912261.791
MD.R-06	611738.451	4912292.052
MD.R-06	611750.333	4912265.676
MD.R-06	611091.05	4912049.383
MD.R-06	610439.536	4911821.892
MD.R-06	610183.851	4911732.134
MD.R-06	610164.292	4911762.192
MD.R-07	611742.228	4912294.025

City of Barrie - Hewitt's Secondary Plan Area Environment Assessment (EA)
Drainage and Stormwater Management Study

MD.R-07	612439.229	4912530.002
MD.R-07	612449.209	4912503.595
MD.R-07	611750.301	4912267.574
MD.R-07	611742.228	4912294.025
YS.R-01	609729.499	4910496.698
YS.R-01	609761.944	4910503.242
YS.R-01	609805.699	4910267.258
YS.R-01	609812.17	4910240.931
YS.R-01	609777.354	4910231.934
YS.R-01	609767.407	4910249.792
YS.R-01	609729.499	4910496.698
YS.R-02	609672.787	4910786.526
YS.R-02	609706.416	4910794.29
YS.R-02	609759.452	4910508.006
YS.R-02	609727.028	4910500.252
YS.R-02	609672.787	4910786.526
YS.R-03	609405.407	4911459.658
YS.R-03	609441.466	4911478.377
YS.R-03	609542.836	4911307.894
YS.R-03	609596.024	4911209.1
YS.R-03	609635.5	4911114.606
YS.R-03	609661.062	4911036.492
YS.R-03	609704.515	4910795.545
YS.R-03	609671.28	4910788.945
YS.R-03	609636.519	4910963.578
YS.R-03	609621.489	4911046.401
YS.R-03	609591.027	4911145.579
YS.R-03	609551.906	4911218.933

YS.R-03 609405.407 4911459.658

[SYMBOLS]

;;Gage X-Coord Y-Coord

;;-----

Proposed ROW Hydrologic Results – PCSWMM Model

[TITLE]

Hewitt's Secondary Plan Area (SPA) Road Improvements and Widening Environmental Assessment (EA) Drainage and Stormwater Management Study, Hatch, 2016.

Rainfall: Developed from RJ Burnside, Hewitt's SIS, 2016

Catchments Delineated from the proposed road profile.

Catchment Parameters: Developed from the proposed ROW highest %Impervious of 80% for maximum peak flow and volume estimates.

Catchment widths set to the width of the ROW flowing to the outlet.

Modeling by: DJ

Checked by: WB

[OPTIONS]

```

;;Options      Value
;-----
FLOW_UNITS      CMS
INFILTRATION    CURVE_NUMBER
FLOW_ROUTING    DYNWAVE
START_DATE      09/05/2014
START_TIME      00:00:00
REPORT_START_DATE 09/05/2014
REPORT_START_TIME 00:00:00
END_DATE        09/06/2014
END_TIME        00:00:00
SWEEP_START     01/01
SWEEP_END       12/31
DRY_DAYS        0
REPORT_STEP     00:00:05
WET_STEP        00:00:05
DRY_STEP        00:00:05
ROUTING_STEP    5
ALLOW_PONDING  YES
INERTIAL_DAMPING PARTIAL
VARIABLE_STEP   0.75
LENGTHENING_STEP 0
MIN_SURFAREA    0
NORMAL_FLOW_LIMITED BOTH
SKIP_STEADY_STATE NO
FORCE_MAIN_EQUATION H-W
LINK_OFFSETS    ELEVATION
MIN_SLOPE       0
MAX_TRIALS      8
HEAD_TOLERANCE  0.0015
SYS_FLOW_TOL    5
LAT_FLOW_TOL    5
MINIMUM_STEP    0.5
THREADS         1
  
```

[EVAPORATION]

;;Type Parameters

```

;;-----
CONSTANT    0.0
DRY_ONLY    NO
  
```

[RAINGAGES]

```

;;                    Rain    Time   Snow   Data
;;Name                Type    Intrvl Catch Source
;;-----
100yr_SCS_24h_Type_II_133.6mm    INTENSITY 0:15   1.0    TIMESERIES
100yr_SCS_24h_Type_II_133.6mm
100yr_SCS_6h_106.5mm                INTENSITY 0:05   1.0    TIMESERIES 100yr_SCS_6h_106.5mm
10yr_SCS_24h_Type_II_89.9mm        INTENSITY 0:15   1.0    TIMESERIES
10yr_SCS_24h_Type_II_89.9mm
10yr_SCS_6h_70.8mm                 INTENSITY 0:05   1.0    TIMESERIES 10y_SCS_6h_70.8mm
25mm                                 INTENSITY 0:05   1.0    TIMESERIES 25mm
25mm_SCS_24h_Type_II_25mm          INTENSITY 0:15   1.0    TIMESERIES
25mm_SCS_24h_Type_II_25mm
25mm_SCS_6h_25mm                    INTENSITY 0:05   1.0    TIMESERIES 25mm_SCS_6h_25mm
25yr_SCS_24h_Type_II_107.5mm       INTENSITY 0:15   1.0    TIMESERIES
25yr_SCS_24h_Type_II_107.5mm
25yr_SCS_6h_85.2mm                 INTENSITY 0:05   1.0    TIMESERIES 25yr_SCS_6h_85.2mm
2yr_SCS_24h_Type_II_55mm            INTENSITY 0:15   1.0    TIMESERIES
2yr_SCS_24h_Type_II_55mm
2yr_SCS_6h_42.3mm                  INTENSITY 0:05   1.0    TIMESERIES 2yr_SCS_6h_42.3mm
50yr_SCS_24h_Type_II_120.6mm       INTENSITY 0:15   1.0    TIMESERIES
50yr_SCS_24h_Type_II_120.6mm
50yr_SCS_6h_95.9mm                 INTENSITY 0:05   1.0    TIMESERIES 50yr_SCS_6h_95.9mm
5yr_SCS_24h_Type_II_76mm            INTENSITY 0:15   1.0    TIMESERIES
5yr_SCS_24h_Type_II_76mm
5yr_SCS_6h_59.5mm                  INTENSITY 0:05   1.0    TIMESERIES 5yr_SCS_6h_59.5mm
Hurricane_Hazel_(Southern_Ontario) INTENSITY 1:00   1.0    TIMESERIES
Hurricane_Hazel_(Southern_Ontario)
NO_RAIN                               INTENSITY 0:05   1.0    TIMESERIES NO_RAIN
SCS_6h_1mm_Jordan                   INTENSITY 0:05   1.0    TIMESERIES SCS_6h_1mm_Jordan
  
```

[SUBCATCHMENTS]

```

;;                                Total    Pcnt.    Pcnt.    Curb    Snow
;;Name                Raingage    Outlet    Area    Imperv    Width    Slope    Length    Pack
;;-----
BBPR.R-01            100yr_SCS_24h_Type_II_133.6mm    BBP1   2.08    80    34    0.5    0
BBPR.R-02            100yr_SCS_24h_Type_II_133.6mm    BBP2   1.12    80    34    0.5    0
LR.R-01              100yr_SCS_24h_Type_II_133.6mm    Lover's1   0.99    80    34    2.6    0
LR.R-02              100yr_SCS_24h_Type_II_133.6mm    Lover's1   3.5    80    34    2    0
LR.R-03              100yr_SCS_24h_Type_II_133.6mm    Hew1   2.16    80    34    2.8    0
LR.R-04              100yr_SCS_24h_Type_II_133.6mm    Hew1   5.84    80    34    1.4    0
LR.R-05              100yr_SCS_24h_Type_II_133.6mm    Hew3   1.47    80    34    3    0
LR.R-06              100yr_SCS_24h_Type_II_133.6mm    Hew3   3.97    80    34    0.8    0
MD.R-01              100yr_SCS_24h_Type_II_133.6mm    Lover's2   2.49    80    41    1.9    0
MD.R-02              100yr_SCS_24h_Type_II_133.6mm    Lover's2   6.03    80    41    2    0
MD.R-03              100yr_SCS_24h_Type_II_133.6mm    Hew2   1.32    80    34    1.1    0
  
```

City of Barrie - Hewitt's Secondary Plan Area Environment Assessment (EA)
Drainage and Stormwater Management Study

MD.R-04	100yr_SCS_24h_Type_II_133.6mm Hew2	0.98	80	34	0.6	0
MD.R-05	100yr_SCS_24h_Type_II_133.6mm Hew4	3.89	80	39	1	0
MD.R-06	100yr_SCS_24h_Type_II_133.6mm Hew4	4.97	80	34	1.4	0
MD.R-07	100yr_SCS_24h_Type_II_133.6mm Hew5	2.02	80	27	0.7	0
YS.R-01	100yr_SCS_24h_Type_II_133.6mm YSLP	0.99	80	34	1	0
YS.R-02	100yr_SCS_24h_Type_II_133.6mm YSLP	0.99	80	34	0.5	0
YS.R-03	100yr_SCS_24h_Type_II_133.6mm Hew4	2.5	80	34	0.5	0

[SUBAREAS]

Subcatchment	N-Imperv	N-Perv	S-Imperv	S-Perv	PctZero	RouteTo	PctRouted
BBPR.R-01	0.013	0.15	2	5	0	OUTLET	
BBPR.R-02	0.013	0.15	2	5	0	OUTLET	
LR.R-01	0.013	0.15	2	5	0	OUTLET	
LR.R-02	0.013	0.15	2	5	0	OUTLET	
LR.R-03	0.013	0.15	2	5	0	OUTLET	
LR.R-04	0.013	0.15	2	5	0	OUTLET	
LR.R-05	0.013	0.15	2	5	0	OUTLET	
LR.R-06	0.013	0.15	2	5	0	OUTLET	
MD.R-01	0.013	0.15	2	5	0	OUTLET	
MD.R-02	0.013	0.15	2	5	0	OUTLET	
MD.R-03	0.013	0.15	2	5	0	OUTLET	
MD.R-04	0.013	0.15	2	5	0	OUTLET	
MD.R-05	0.013	0.15	2	5	0	OUTLET	
MD.R-06	0.013	0.15	2	5	0	OUTLET	
MD.R-07	0.013	0.15	2	5	0	OUTLET	
YS.R-01	0.013	0.15	2	5	0	OUTLET	
YS.R-02	0.013	0.15	2	5	0	OUTLET	
YS.R-03	0.013	0.15	2	5	0	OUTLET	

[INFILTRATION]

Subcatchment	CurveNum	HydCon	DryTime
BBPR.R-01	70	18	2
BBPR.R-02	70	18	2
LR.R-01	70	18	2
LR.R-02	70	18	2
LR.R-03	70	18	2
LR.R-04	70	18	2
LR.R-05	70	18	2
LR.R-06	70	18	2
MD.R-01	82	18	2
MD.R-02	70	18	2
MD.R-03	70	18	2
MD.R-04	70	18	2
MD.R-05	70	18	2
MD.R-06	70	18	2
MD.R-07	70	18	2
YS.R-01	70	18	2
YS.R-02	70	18	2
YS.R-03	70	18	2

[AQUIFERS]

;;Name	Porosity	Wilt Point	Field Capac	Hyd Cond	Cond Cond	Tens Slope	Upper Slope	Lower Evap	Lower Evap	Bottom Loss	Water Elev	Upper Table	Upper Moist	Upper Evap	Upper Pat
105AQ	0.453	0.085	0.19	21.8	7.5	0	0	2.3	0.002	324.57	336.57	0.1			
110AQ	0.463	0.116	0.232	14.5	10.6	0	0	3.7	0.002	302.57	314.57	0.2			
115AQ	0.463	0.116	0.232	14.5	10.6	0	0	3.7	0.002	302.57	314.57	0.2			
120AQ	0.463	0.116	0.232	14.8	10.6	0	0	3.7	0.002	270.51	282.51	0.2			
125AQ	0.463	0.116	0.232	14.5	10.6	0	0	3.7	0.002	284.62	296.62	0.2			
130AQ	0.479	0.251	0.371	10	14.5	0	0	4.3	0.002	264.82	278.68	0.3			
132aAQ	0.437	0.047	0.105	59.8	5.7	0	0	2.3	0.002	237.086	252.086	0.1			
132AQ	0.479	0.251	0.371	10.2	14.5	0	0	4.3	0.002	240.086	251.061	0.3			
134AQ	0.463	0.116	0.232	17.5	10.6	0	0	3.7	0.002	244.085	256.085	0.2			
135AQ	0.453	0.085	0.19	21.8	7.5	0	0	2.3	0.002	264.651	273.651	0.1			
140aAQ	0.453	0.085	0.19	21.8	7.5	0	0	2.3	0.002	241.568	250.568	0.1			
140AQ	0.501	0.135	0.284	16.2	10.8	0	0	5.2	0.002	243.568	247.994	0.2			
156AQ	0.453	0.085	0.19	21.8	7.5	0	0	2.3	0.002	239.46	251.11	0.1			
212AQ	0.453	0.085	0.19	21.8	7.5	0	0	2.3	0.002	236.5	240.365	0.1			
220AQ	0.501	0.135	0.284	12.2	10.8	0	0	5.2	0.002	248.671	251.709	0.2			
222AQ	0.453	0.085	0.19	21.8	7.5	0	0	2.3	0.002	233.686	242.681	0.1			
225AQ	0.453	0.085	0.19	21.8	7.5	0	0	2.3	0.002	232.06	254.06	0.1			
S190aAQ	0.453	0.085	0.19	21.8	7.5	0	0	2.3	0.002	258.51	260.22	0.1			
S210aAQ	0.453	0.085	0.19	21.8	7.5	0	0	2.3	0.002	246.43	248.43	0.2			
S250AQ	0.453	0.085	0.19	21.8	7.5	0	0	2.3	0.002	250.984	251.446	0.2			
S251AQ	0.453	0.085	0.19	21.8	7.5	0	0	2.3	0.002	251.134	252.579	0.1			
S290aAQ	0.453	0.085	0.19	21.8	7.5	0	0	2.3	0.002	252	259.41	0.1			
S290bAQ	0.453	0.085	0.19	21.8	7.5	0	0	2.3	0.002	237.07	251.88	0.1			

[GROUNDWATER]

;;Subcatchment	Aquifer	Node	Elev	A1	B1	A2	B2	A3	Depth	Elev	Ebot	Wgr
Umc												

[OUTFALLS]

;;Name	Invert Elev.	Outfall Type	Stage/Table Time Series	Tide Gate Route To
BBP1	0	FREE		NO
BBP1				
BBP2	0	FREE		NO
Hew1	0	FREE		NO
Hew2	266	NORMAL		NO
Hew3	0	FREE		NO
Hew4	0	FREE		NO
Hew5	0	FREE		NO
Lover's1	0	FREE		NO
Lover's2	0	FREE		NO
YSLP	0	FREE		NO

[TIMESERIES]

Name	Date	Time	Value
;SCS_24h_Type_II_133.6mm design storm, total rainfall = 133.6 mm, rain units = mm/hr.			
100yr_SCS_24h_Type_II_133.6mm		0:00	1.47
100yr_SCS_24h_Type_II_133.6mm		0:15	1.47
100yr_SCS_24h_Type_II_133.6mm		0:30	1.47
100yr_SCS_24h_Type_II_133.6mm		0:45	1.47
100yr_SCS_24h_Type_II_133.6mm		1:00	1.47
100yr_SCS_24h_Type_II_133.6mm		1:15	1.47
100yr_SCS_24h_Type_II_133.6mm		1:30	1.47
100yr_SCS_24h_Type_II_133.6mm		1:45	1.47
100yr_SCS_24h_Type_II_133.6mm		2:00	1.737
100yr_SCS_24h_Type_II_133.6mm		2:15	1.737
100yr_SCS_24h_Type_II_133.6mm		2:30	1.737
100yr_SCS_24h_Type_II_133.6mm		2:45	1.737
100yr_SCS_24h_Type_II_133.6mm		3:00	1.737
100yr_SCS_24h_Type_II_133.6mm		3:15	1.737
100yr_SCS_24h_Type_II_133.6mm		3:30	1.737
100yr_SCS_24h_Type_II_133.6mm		3:45	1.737
100yr_SCS_24h_Type_II_133.6mm		4:00	2.138
100yr_SCS_24h_Type_II_133.6mm		4:15	2.138
100yr_SCS_24h_Type_II_133.6mm		4:30	2.138
100yr_SCS_24h_Type_II_133.6mm		4:45	2.138
100yr_SCS_24h_Type_II_133.6mm		5:00	2.138
100yr_SCS_24h_Type_II_133.6mm		5:15	2.138
100yr_SCS_24h_Type_II_133.6mm		5:30	2.138
100yr_SCS_24h_Type_II_133.6mm		5:45	2.138
100yr_SCS_24h_Type_II_133.6mm		6:00	2.405
100yr_SCS_24h_Type_II_133.6mm		6:15	2.405
100yr_SCS_24h_Type_II_133.6mm		6:30	2.405
100yr_SCS_24h_Type_II_133.6mm		6:45	2.405
100yr_SCS_24h_Type_II_133.6mm		7:00	2.939
100yr_SCS_24h_Type_II_133.6mm		7:15	2.939
100yr_SCS_24h_Type_II_133.6mm		7:30	2.939
100yr_SCS_24h_Type_II_133.6mm		7:45	2.939
100yr_SCS_24h_Type_II_133.6mm		8:00	3.474
100yr_SCS_24h_Type_II_133.6mm		8:15	3.474
100yr_SCS_24h_Type_II_133.6mm		8:30	3.741
100yr_SCS_24h_Type_II_133.6mm		8:45	3.741
100yr_SCS_24h_Type_II_133.6mm		9:00	4.275
100yr_SCS_24h_Type_II_133.6mm		9:15	4.275
100yr_SCS_24h_Type_II_133.6mm		9:30	4.81
100yr_SCS_24h_Type_II_133.6mm		9:45	4.81
100yr_SCS_24h_Type_II_133.6mm		10:00	6.146
100yr_SCS_24h_Type_II_133.6mm		10:15	6.146
100yr_SCS_24h_Type_II_133.6mm		10:30	8.283
100yr_SCS_24h_Type_II_133.6mm		10:45	8.283
100yr_SCS_24h_Type_II_133.6mm		11:00	12.826
100yr_SCS_24h_Type_II_133.6mm		11:15	12.826
100yr_SCS_24h_Type_II_133.6mm		11:30	39.546
100yr_SCS_24h_Type_II_133.6mm		11:45	163.526

City of Barrie - Hewitt's Secondary Plan Area Environment Assessment (EA)
Drainage and Stormwater Management Study

100yr_SCS_24h_Type_II_133.6mm	12:00	19.238
100yr_SCS_24h_Type_II_133.6mm	12:15	19.238
100yr_SCS_24h_Type_II_133.6mm	12:30	9.886
100yr_SCS_24h_Type_II_133.6mm	12:45	9.886
100yr_SCS_24h_Type_II_133.6mm	13:00	7.214
100yr_SCS_24h_Type_II_133.6mm	13:15	7.214
100yr_SCS_24h_Type_II_133.6mm	13:30	5.611
100yr_SCS_24h_Type_II_133.6mm	13:45	5.611
100yr_SCS_24h_Type_II_133.6mm	14:00	4.008
100yr_SCS_24h_Type_II_133.6mm	14:15	4.008
100yr_SCS_24h_Type_II_133.6mm	14:30	4.008
100yr_SCS_24h_Type_II_133.6mm	14:45	4.008
100yr_SCS_24h_Type_II_133.6mm	15:00	4.008
100yr_SCS_24h_Type_II_133.6mm	15:15	4.008
100yr_SCS_24h_Type_II_133.6mm	15:30	4.008
100yr_SCS_24h_Type_II_133.6mm	15:45	4.008
100yr_SCS_24h_Type_II_133.6mm	16:00	2.405
100yr_SCS_24h_Type_II_133.6mm	16:15	2.405
100yr_SCS_24h_Type_II_133.6mm	16:30	2.405
100yr_SCS_24h_Type_II_133.6mm	16:45	2.405
100yr_SCS_24h_Type_II_133.6mm	17:00	2.405
100yr_SCS_24h_Type_II_133.6mm	17:15	2.405
100yr_SCS_24h_Type_II_133.6mm	17:30	2.405
100yr_SCS_24h_Type_II_133.6mm	17:45	2.405
100yr_SCS_24h_Type_II_133.6mm	18:00	2.405
100yr_SCS_24h_Type_II_133.6mm	18:15	2.405
100yr_SCS_24h_Type_II_133.6mm	18:30	2.405
100yr_SCS_24h_Type_II_133.6mm	18:45	2.405
100yr_SCS_24h_Type_II_133.6mm	19:00	2.405
100yr_SCS_24h_Type_II_133.6mm	19:15	2.405
100yr_SCS_24h_Type_II_133.6mm	19:30	2.405
100yr_SCS_24h_Type_II_133.6mm	19:45	2.405
100yr_SCS_24h_Type_II_133.6mm	20:00	1.603
100yr_SCS_24h_Type_II_133.6mm	20:15	1.603
100yr_SCS_24h_Type_II_133.6mm	20:30	1.603
100yr_SCS_24h_Type_II_133.6mm	20:45	1.603
100yr_SCS_24h_Type_II_133.6mm	21:00	1.603
100yr_SCS_24h_Type_II_133.6mm	21:15	1.603
100yr_SCS_24h_Type_II_133.6mm	21:30	1.603
100yr_SCS_24h_Type_II_133.6mm	21:45	1.603
100yr_SCS_24h_Type_II_133.6mm	22:00	1.603
100yr_SCS_24h_Type_II_133.6mm	22:15	1.603
100yr_SCS_24h_Type_II_133.6mm	22:30	1.603
100yr_SCS_24h_Type_II_133.6mm	22:45	1.603
100yr_SCS_24h_Type_II_133.6mm	23:00	1.603
100yr_SCS_24h_Type_II_133.6mm	23:15	1.603
100yr_SCS_24h_Type_II_133.6mm	23:30	1.603
100yr_SCS_24h_Type_II_133.6mm	23:45	1.603
100yr_SCS_24h_Type_II_133.6mm	24:00	0

;SCS_6h_106.5mm design storm, total rainfall = 106.5 mm, rain units = mm/hr.

City of Barrie - Hewitt's Secondary Plan Area Environment Assessment (EA)
Drainage and Stormwater Management Study

100yr_SCS_6h_106.5mm	0:00	7.221
100yr_SCS_6h_106.5mm	0:05	7.221
100yr_SCS_6h_106.5mm	0:10	7.221
100yr_SCS_6h_106.5mm	0:15	7.221
100yr_SCS_6h_106.5mm	0:20	7.221
100yr_SCS_6h_106.5mm	0:25	7.221
100yr_SCS_6h_106.5mm	0:30	7.221
100yr_SCS_6h_106.5mm	0:35	10.825
100yr_SCS_6h_106.5mm	0:40	10.825
100yr_SCS_6h_106.5mm	0:45	10.825
100yr_SCS_6h_106.5mm	0:50	10.825
100yr_SCS_6h_106.5mm	0:55	10.825
100yr_SCS_6h_106.5mm	1:00	10.825
100yr_SCS_6h_106.5mm	1:05	10.825
100yr_SCS_6h_106.5mm	1:10	14.429
100yr_SCS_6h_106.5mm	1:15	14.429
100yr_SCS_6h_106.5mm	1:20	14.429
100yr_SCS_6h_106.5mm	1:25	14.429
100yr_SCS_6h_106.5mm	1:30	18.033
100yr_SCS_6h_106.5mm	1:35	18.033
100yr_SCS_6h_106.5mm	1:40	18.033
100yr_SCS_6h_106.5mm	1:45	18.033
100yr_SCS_6h_106.5mm	1:50	43.286
100yr_SCS_6h_106.5mm	1:55	43.286
100yr_SCS_6h_106.5mm	2:00	43.286
100yr_SCS_6h_106.5mm	2:05	78.15
100yr_SCS_6h_106.5mm	2:10	78.15
100yr_SCS_6h_106.5mm	2:15	81.153
100yr_SCS_6h_106.5mm	2:20	81.153
100yr_SCS_6h_106.5mm	2:25	63.12
100yr_SCS_6h_106.5mm	2:30	27.055
100yr_SCS_6h_106.5mm	2:35	27.055
100yr_SCS_6h_106.5mm	2:40	27.055
100yr_SCS_6h_106.5mm	2:45	18.033
100yr_SCS_6h_106.5mm	2:50	18.033
100yr_SCS_6h_106.5mm	2:55	18.033
100yr_SCS_6h_106.5mm	3:00	18.033
100yr_SCS_6h_106.5mm	3:05	18.033
100yr_SCS_6h_106.5mm	3:10	18.033
100yr_SCS_6h_106.5mm	3:15	18.033
100yr_SCS_6h_106.5mm	3:20	14.429
100yr_SCS_6h_106.5mm	3:25	14.429
100yr_SCS_6h_106.5mm	3:30	14.429
100yr_SCS_6h_106.5mm	3:35	14.429
100yr_SCS_6h_106.5mm	3:40	14.429
100yr_SCS_6h_106.5mm	3:45	14.429
100yr_SCS_6h_106.5mm	3:50	14.429
100yr_SCS_6h_106.5mm	3:55	10.825
100yr_SCS_6h_106.5mm	4:00	10.825
100yr_SCS_6h_106.5mm	4:05	10.825
100yr_SCS_6h_106.5mm	4:10	10.825

City of Barrie - Hewitt's Secondary Plan Area Environment Assessment (EA)
Drainage and Stormwater Management Study

100yr_SCS_6h_106.5mm	4:15	10.825
100yr_SCS_6h_106.5mm	4:20	10.825
100yr_SCS_6h_106.5mm	4:25	10.825
100yr_SCS_6h_106.5mm	4:30	8.422
100yr_SCS_6h_106.5mm	4:35	8.422
100yr_SCS_6h_106.5mm	4:40	8.422
100yr_SCS_6h_106.5mm	4:45	8.422
100yr_SCS_6h_106.5mm	4:50	8.422
100yr_SCS_6h_106.5mm	4:55	8.422
100yr_SCS_6h_106.5mm	5:00	8.422
100yr_SCS_6h_106.5mm	5:05	8.422
100yr_SCS_6h_106.5mm	5:10	8.422
100yr_SCS_6h_106.5mm	5:15	8.422
100yr_SCS_6h_106.5mm	5:20	8.422
100yr_SCS_6h_106.5mm	5:25	4.805
100yr_SCS_6h_106.5mm	5:30	4.805
100yr_SCS_6h_106.5mm	5:35	4.805
100yr_SCS_6h_106.5mm	5:40	4.805
100yr_SCS_6h_106.5mm	5:45	4.805
100yr_SCS_6h_106.5mm	5:50	4.805
100yr_SCS_6h_106.5mm	5:55	4.805
100yr_SCS_6h_106.5mm	6:00	0

;SCS_6h_70.8mm design storm, total rainfall = 70.8 mm, rain units = mm/hr.

10y_SCS_6h_70.8mm	0:00	4.8
10y_SCS_6h_70.8mm	0:05	4.8
10y_SCS_6h_70.8mm	0:10	4.8
10y_SCS_6h_70.8mm	0:15	4.8
10y_SCS_6h_70.8mm	0:20	4.8
10y_SCS_6h_70.8mm	0:25	4.8
10y_SCS_6h_70.8mm	0:30	4.8
10y_SCS_6h_70.8mm	0:35	7.196
10y_SCS_6h_70.8mm	0:40	7.196
10y_SCS_6h_70.8mm	0:45	7.196
10y_SCS_6h_70.8mm	0:50	7.196
10y_SCS_6h_70.8mm	0:55	7.196
10y_SCS_6h_70.8mm	1:00	7.196
10y_SCS_6h_70.8mm	1:05	7.196
10y_SCS_6h_70.8mm	1:10	9.592
10y_SCS_6h_70.8mm	1:15	9.592
10y_SCS_6h_70.8mm	1:20	9.592
10y_SCS_6h_70.8mm	1:25	9.592
10y_SCS_6h_70.8mm	1:30	11.988
10y_SCS_6h_70.8mm	1:35	11.988
10y_SCS_6h_70.8mm	1:40	11.988
10y_SCS_6h_70.8mm	1:45	11.988
10y_SCS_6h_70.8mm	1:50	28.776
10y_SCS_6h_70.8mm	1:55	28.776
10y_SCS_6h_70.8mm	2:00	28.776
10y_SCS_6h_70.8mm	2:05	51.953
10y_SCS_6h_70.8mm	2:10	51.953

City of Barrie - Hewitt's Secondary Plan Area Environment Assessment (EA)
Drainage and Stormwater Management Study

10y_SCS_6h_70.8mm	2:15	53.95
10y_SCS_6h_70.8mm	2:20	53.95
10y_SCS_6h_70.8mm	2:25	41.962
10y_SCS_6h_70.8mm	2:30	17.986
10y_SCS_6h_70.8mm	2:35	17.986
10y_SCS_6h_70.8mm	2:40	17.986
10y_SCS_6h_70.8mm	2:45	11.988
10y_SCS_6h_70.8mm	2:50	11.988
10y_SCS_6h_70.8mm	2:55	11.988
10y_SCS_6h_70.8mm	3:00	11.988
10y_SCS_6h_70.8mm	3:05	11.988
10y_SCS_6h_70.8mm	3:10	11.988
10y_SCS_6h_70.8mm	3:15	11.988
10y_SCS_6h_70.8mm	3:20	9.592
10y_SCS_6h_70.8mm	3:25	9.592
10y_SCS_6h_70.8mm	3:30	9.592
10y_SCS_6h_70.8mm	3:35	9.592
10y_SCS_6h_70.8mm	3:40	9.592
10y_SCS_6h_70.8mm	3:45	9.592
10y_SCS_6h_70.8mm	3:50	9.592
10y_SCS_6h_70.8mm	3:55	7.196
10y_SCS_6h_70.8mm	4:00	7.196
10y_SCS_6h_70.8mm	4:05	7.196
10y_SCS_6h_70.8mm	4:10	7.196
10y_SCS_6h_70.8mm	4:15	7.196
10y_SCS_6h_70.8mm	4:20	7.196
10y_SCS_6h_70.8mm	4:25	7.196
10y_SCS_6h_70.8mm	4:30	5.599
10y_SCS_6h_70.8mm	4:35	5.599
10y_SCS_6h_70.8mm	4:40	5.599
10y_SCS_6h_70.8mm	4:45	5.599
10y_SCS_6h_70.8mm	4:50	5.599
10y_SCS_6h_70.8mm	4:55	5.599
10y_SCS_6h_70.8mm	5:00	5.599
10y_SCS_6h_70.8mm	5:05	5.599
10y_SCS_6h_70.8mm	5:10	5.599
10y_SCS_6h_70.8mm	5:15	5.599
10y_SCS_6h_70.8mm	5:20	5.599
10y_SCS_6h_70.8mm	5:25	3.194
10y_SCS_6h_70.8mm	5:30	3.194
10y_SCS_6h_70.8mm	5:35	3.194
10y_SCS_6h_70.8mm	5:40	3.194
10y_SCS_6h_70.8mm	5:45	3.194
10y_SCS_6h_70.8mm	5:50	3.194
10y_SCS_6h_70.8mm	5:55	3.194
10y_SCS_6h_70.8mm	6:00	0

;SCS_24h_Type_II_89.9mm design storm, total rainfall = 89.9 mm, rain units = mm/hr.

10yr_SCS_24h_Type_II_89.9mm	0:00	0.989
10yr_SCS_24h_Type_II_89.9mm	0:15	0.989
10yr_SCS_24h_Type_II_89.9mm	0:30	0.989

City of Barrie - Hewitt's Secondary Plan Area Environment Assessment (EA)
Drainage and Stormwater Management Study

10yr_SCS_24h_Type_II_89.9mm	0:45	0.989
10yr_SCS_24h_Type_II_89.9mm	1:00	0.989
10yr_SCS_24h_Type_II_89.9mm	1:15	0.989
10yr_SCS_24h_Type_II_89.9mm	1:30	0.989
10yr_SCS_24h_Type_II_89.9mm	1:45	0.989
10yr_SCS_24h_Type_II_89.9mm	2:00	1.169
10yr_SCS_24h_Type_II_89.9mm	2:15	1.169
10yr_SCS_24h_Type_II_89.9mm	2:30	1.169
10yr_SCS_24h_Type_II_89.9mm	2:45	1.169
10yr_SCS_24h_Type_II_89.9mm	3:00	1.169
10yr_SCS_24h_Type_II_89.9mm	3:15	1.169
10yr_SCS_24h_Type_II_89.9mm	3:30	1.169
10yr_SCS_24h_Type_II_89.9mm	3:45	1.169
10yr_SCS_24h_Type_II_89.9mm	4:00	1.438
10yr_SCS_24h_Type_II_89.9mm	4:15	1.438
10yr_SCS_24h_Type_II_89.9mm	4:30	1.438
10yr_SCS_24h_Type_II_89.9mm	4:45	1.438
10yr_SCS_24h_Type_II_89.9mm	5:00	1.438
10yr_SCS_24h_Type_II_89.9mm	5:15	1.438
10yr_SCS_24h_Type_II_89.9mm	5:30	1.438
10yr_SCS_24h_Type_II_89.9mm	5:45	1.438
10yr_SCS_24h_Type_II_89.9mm	6:00	1.618
10yr_SCS_24h_Type_II_89.9mm	6:15	1.618
10yr_SCS_24h_Type_II_89.9mm	6:30	1.618
10yr_SCS_24h_Type_II_89.9mm	6:45	1.618
10yr_SCS_24h_Type_II_89.9mm	7:00	1.978
10yr_SCS_24h_Type_II_89.9mm	7:15	1.978
10yr_SCS_24h_Type_II_89.9mm	7:30	1.978
10yr_SCS_24h_Type_II_89.9mm	7:45	1.978
10yr_SCS_24h_Type_II_89.9mm	8:00	2.337
10yr_SCS_24h_Type_II_89.9mm	8:15	2.337
10yr_SCS_24h_Type_II_89.9mm	8:30	2.517
10yr_SCS_24h_Type_II_89.9mm	8:45	2.517
10yr_SCS_24h_Type_II_89.9mm	9:00	2.877
10yr_SCS_24h_Type_II_89.9mm	9:15	2.877
10yr_SCS_24h_Type_II_89.9mm	9:30	3.236
10yr_SCS_24h_Type_II_89.9mm	9:45	3.236
10yr_SCS_24h_Type_II_89.9mm	10:00	4.135
10yr_SCS_24h_Type_II_89.9mm	10:15	4.135
10yr_SCS_24h_Type_II_89.9mm	10:30	5.574
10yr_SCS_24h_Type_II_89.9mm	10:45	5.574
10yr_SCS_24h_Type_II_89.9mm	11:00	8.63
10yr_SCS_24h_Type_II_89.9mm	11:15	8.63
10yr_SCS_24h_Type_II_89.9mm	11:30	26.61
10yr_SCS_24h_Type_II_89.9mm	11:45	110.038
10yr_SCS_24h_Type_II_89.9mm	12:00	12.946
10yr_SCS_24h_Type_II_89.9mm	12:15	12.946
10yr_SCS_24h_Type_II_89.9mm	12:30	6.653
10yr_SCS_24h_Type_II_89.9mm	12:45	6.653
10yr_SCS_24h_Type_II_89.9mm	13:00	4.855
10yr_SCS_24h_Type_II_89.9mm	13:15	4.855

10yr_SCS_24h_Type_II_89.9mm	13:30	3.776
10yr_SCS_24h_Type_II_89.9mm	13:45	3.776
10yr_SCS_24h_Type_II_89.9mm	14:00	2.697
10yr_SCS_24h_Type_II_89.9mm	14:15	2.697
10yr_SCS_24h_Type_II_89.9mm	14:30	2.697
10yr_SCS_24h_Type_II_89.9mm	14:45	2.697
10yr_SCS_24h_Type_II_89.9mm	15:00	2.697
10yr_SCS_24h_Type_II_89.9mm	15:15	2.697
10yr_SCS_24h_Type_II_89.9mm	15:30	2.697
10yr_SCS_24h_Type_II_89.9mm	15:45	2.697
10yr_SCS_24h_Type_II_89.9mm	16:00	1.618
10yr_SCS_24h_Type_II_89.9mm	16:15	1.618
10yr_SCS_24h_Type_II_89.9mm	16:30	1.618
10yr_SCS_24h_Type_II_89.9mm	16:45	1.618
10yr_SCS_24h_Type_II_89.9mm	17:00	1.618
10yr_SCS_24h_Type_II_89.9mm	17:15	1.618
10yr_SCS_24h_Type_II_89.9mm	17:30	1.618
10yr_SCS_24h_Type_II_89.9mm	17:45	1.618
10yr_SCS_24h_Type_II_89.9mm	18:00	1.618
10yr_SCS_24h_Type_II_89.9mm	18:15	1.618
10yr_SCS_24h_Type_II_89.9mm	18:30	1.618
10yr_SCS_24h_Type_II_89.9mm	18:45	1.618
10yr_SCS_24h_Type_II_89.9mm	19:00	1.618
10yr_SCS_24h_Type_II_89.9mm	19:15	1.618
10yr_SCS_24h_Type_II_89.9mm	19:30	1.618
10yr_SCS_24h_Type_II_89.9mm	19:45	1.618
10yr_SCS_24h_Type_II_89.9mm	20:00	1.079
10yr_SCS_24h_Type_II_89.9mm	20:15	1.079
10yr_SCS_24h_Type_II_89.9mm	20:30	1.079
10yr_SCS_24h_Type_II_89.9mm	20:45	1.079
10yr_SCS_24h_Type_II_89.9mm	21:00	1.079
10yr_SCS_24h_Type_II_89.9mm	21:15	1.079
10yr_SCS_24h_Type_II_89.9mm	21:30	1.079
10yr_SCS_24h_Type_II_89.9mm	21:45	1.079
10yr_SCS_24h_Type_II_89.9mm	22:00	1.079
10yr_SCS_24h_Type_II_89.9mm	22:15	1.079
10yr_SCS_24h_Type_II_89.9mm	22:30	1.079
10yr_SCS_24h_Type_II_89.9mm	22:45	1.079
10yr_SCS_24h_Type_II_89.9mm	23:00	1.079
10yr_SCS_24h_Type_II_89.9mm	23:15	1.079
10yr_SCS_24h_Type_II_89.9mm	23:30	1.079
10yr_SCS_24h_Type_II_89.9mm	23:45	1.079
10yr_SCS_24h_Type_II_89.9mm	24:00	0

25mm	0	1.44
25mm	0:05	1.44
25mm	0:10	1.54
25mm	0:15	1.64
25mm	0:20	1.75
25mm	0:25	1.95
25mm	0:30	1.95

25mm	0:35	2.16
25mm	0:40	2.26
25mm	0:45	2.57
25mm	0:50	2.78
25mm	0:55	3.19
25mm	1:00	3.6
25mm	1:05	4.22
25mm	1:10	5.04
25mm	1:15	6.37
25mm	1:20	8.84
25mm	1:25	14.19
25mm	1:30	35.06
25mm	1:35	70.73
25mm	1:40	26.94
25mm	1:45	15.52
25mm	1:50	10.69
25mm	1:55	8.22
25mm	2:00	6.68
25mm	2:05	5.65
25mm	2:10	4.83
25mm	2:15	4.32
25mm	2:20	3.91
25mm	2:25	3.5
25mm	2:30	3.19
25mm	2:35	2.98
25mm	2:40	2.78
25mm	2:45	2.57
25mm	2:50	2.47
25mm	2:55	2.26
25mm	3:00	2.16
25mm	3:05	2.06
25mm	3:10	1.95
25mm	3:15	1.95
25mm	3:20	1.75
25mm	3:25	1.75
25mm	3:30	1.64
25mm	3:35	1.64
25mm	3:40	1.54
25mm	3:45	1.44
25mm	3:50	1.44
25mm	3:55	1.44
25mm	4:00	0

;SCS_24h_Type_II_25mm design storm, total rainfall = 25 mm, rain units = mm/hr.

25mm_SCS_24h_Type_II_25mm	0:00	0.275
25mm_SCS_24h_Type_II_25mm	0:15	0.275
25mm_SCS_24h_Type_II_25mm	0:30	0.275
25mm_SCS_24h_Type_II_25mm	0:45	0.275
25mm_SCS_24h_Type_II_25mm	1:00	0.275
25mm_SCS_24h_Type_II_25mm	1:15	0.275
25mm_SCS_24h_Type_II_25mm	1:30	0.275

City of Barrie - Hewitt's Secondary Plan Area Environment Assessment (EA)
Drainage and Stormwater Management Study

25mm_SCS_24h_Type_II_25mm	1:45	0.275
25mm_SCS_24h_Type_II_25mm	2:00	0.325
25mm_SCS_24h_Type_II_25mm	2:15	0.325
25mm_SCS_24h_Type_II_25mm	2:30	0.325
25mm_SCS_24h_Type_II_25mm	2:45	0.325
25mm_SCS_24h_Type_II_25mm	3:00	0.325
25mm_SCS_24h_Type_II_25mm	3:15	0.325
25mm_SCS_24h_Type_II_25mm	3:30	0.325
25mm_SCS_24h_Type_II_25mm	3:45	0.325
25mm_SCS_24h_Type_II_25mm	4:00	0.4
25mm_SCS_24h_Type_II_25mm	4:15	0.4
25mm_SCS_24h_Type_II_25mm	4:30	0.4
25mm_SCS_24h_Type_II_25mm	4:45	0.4
25mm_SCS_24h_Type_II_25mm	5:00	0.4
25mm_SCS_24h_Type_II_25mm	5:15	0.4
25mm_SCS_24h_Type_II_25mm	5:30	0.4
25mm_SCS_24h_Type_II_25mm	5:45	0.4
25mm_SCS_24h_Type_II_25mm	6:00	0.45
25mm_SCS_24h_Type_II_25mm	6:15	0.45
25mm_SCS_24h_Type_II_25mm	6:30	0.45
25mm_SCS_24h_Type_II_25mm	6:45	0.45
25mm_SCS_24h_Type_II_25mm	7:00	0.55
25mm_SCS_24h_Type_II_25mm	7:15	0.55
25mm_SCS_24h_Type_II_25mm	7:30	0.55
25mm_SCS_24h_Type_II_25mm	7:45	0.55
25mm_SCS_24h_Type_II_25mm	8:00	0.65
25mm_SCS_24h_Type_II_25mm	8:15	0.65
25mm_SCS_24h_Type_II_25mm	8:30	0.7
25mm_SCS_24h_Type_II_25mm	8:45	0.7
25mm_SCS_24h_Type_II_25mm	9:00	0.8
25mm_SCS_24h_Type_II_25mm	9:15	0.8
25mm_SCS_24h_Type_II_25mm	9:30	0.9
25mm_SCS_24h_Type_II_25mm	9:45	0.9
25mm_SCS_24h_Type_II_25mm	10:00	1.15
25mm_SCS_24h_Type_II_25mm	10:15	1.15
25mm_SCS_24h_Type_II_25mm	10:30	1.55
25mm_SCS_24h_Type_II_25mm	10:45	1.55
25mm_SCS_24h_Type_II_25mm	11:00	2.4
25mm_SCS_24h_Type_II_25mm	11:15	2.4
25mm_SCS_24h_Type_II_25mm	11:30	7.4
25mm_SCS_24h_Type_II_25mm	11:45	30.6
25mm_SCS_24h_Type_II_25mm	12:00	3.6
25mm_SCS_24h_Type_II_25mm	12:15	3.6
25mm_SCS_24h_Type_II_25mm	12:30	1.85
25mm_SCS_24h_Type_II_25mm	12:45	1.85
25mm_SCS_24h_Type_II_25mm	13:00	1.35
25mm_SCS_24h_Type_II_25mm	13:15	1.35
25mm_SCS_24h_Type_II_25mm	13:30	1.05
25mm_SCS_24h_Type_II_25mm	13:45	1.05
25mm_SCS_24h_Type_II_25mm	14:00	0.75
25mm_SCS_24h_Type_II_25mm	14:15	0.75

25mm_SCS_24h_Type_II_25mm	14:30	0.75
25mm_SCS_24h_Type_II_25mm	14:45	0.75
25mm_SCS_24h_Type_II_25mm	15:00	0.75
25mm_SCS_24h_Type_II_25mm	15:15	0.75
25mm_SCS_24h_Type_II_25mm	15:30	0.75
25mm_SCS_24h_Type_II_25mm	15:45	0.75
25mm_SCS_24h_Type_II_25mm	16:00	0.45
25mm_SCS_24h_Type_II_25mm	16:15	0.45
25mm_SCS_24h_Type_II_25mm	16:30	0.45
25mm_SCS_24h_Type_II_25mm	16:45	0.45
25mm_SCS_24h_Type_II_25mm	17:00	0.45
25mm_SCS_24h_Type_II_25mm	17:15	0.45
25mm_SCS_24h_Type_II_25mm	17:30	0.45
25mm_SCS_24h_Type_II_25mm	17:45	0.45
25mm_SCS_24h_Type_II_25mm	18:00	0.45
25mm_SCS_24h_Type_II_25mm	18:15	0.45
25mm_SCS_24h_Type_II_25mm	18:30	0.45
25mm_SCS_24h_Type_II_25mm	18:45	0.45
25mm_SCS_24h_Type_II_25mm	19:00	0.45
25mm_SCS_24h_Type_II_25mm	19:15	0.45
25mm_SCS_24h_Type_II_25mm	19:30	0.45
25mm_SCS_24h_Type_II_25mm	19:45	0.45
25mm_SCS_24h_Type_II_25mm	20:00	0.3
25mm_SCS_24h_Type_II_25mm	20:15	0.3
25mm_SCS_24h_Type_II_25mm	20:30	0.3
25mm_SCS_24h_Type_II_25mm	20:45	0.3
25mm_SCS_24h_Type_II_25mm	21:00	0.3
25mm_SCS_24h_Type_II_25mm	21:15	0.3
25mm_SCS_24h_Type_II_25mm	21:30	0.3
25mm_SCS_24h_Type_II_25mm	21:45	0.3
25mm_SCS_24h_Type_II_25mm	22:00	0.3
25mm_SCS_24h_Type_II_25mm	22:15	0.3
25mm_SCS_24h_Type_II_25mm	22:30	0.3
25mm_SCS_24h_Type_II_25mm	22:45	0.3
25mm_SCS_24h_Type_II_25mm	23:00	0.3
25mm_SCS_24h_Type_II_25mm	23:15	0.3
25mm_SCS_24h_Type_II_25mm	23:30	0.3
25mm_SCS_24h_Type_II_25mm	23:45	0.3
25mm_SCS_24h_Type_II_25mm	24:00	0

;SCS_6h_25mm design storm, total rainfall = 25 mm, rain units = mm/hr.

25mm_SCS_6h_25mm	0:00	1.695
25mm_SCS_6h_25mm	0:05	1.695
25mm_SCS_6h_25mm	0:10	1.695
25mm_SCS_6h_25mm	0:15	1.695
25mm_SCS_6h_25mm	0:20	1.695
25mm_SCS_6h_25mm	0:25	1.695
25mm_SCS_6h_25mm	0:30	1.695
25mm_SCS_6h_25mm	0:35	2.541
25mm_SCS_6h_25mm	0:40	2.541
25mm_SCS_6h_25mm	0:45	2.541

25mm_SCS_6h_25mm	0:50	2.541
25mm_SCS_6h_25mm	0:55	2.541
25mm_SCS_6h_25mm	1:00	2.541
25mm_SCS_6h_25mm	1:05	2.541
25mm_SCS_6h_25mm	1:10	3.387
25mm_SCS_6h_25mm	1:15	3.387
25mm_SCS_6h_25mm	1:20	3.387
25mm_SCS_6h_25mm	1:25	3.387
25mm_SCS_6h_25mm	1:30	4.233
25mm_SCS_6h_25mm	1:35	4.233
25mm_SCS_6h_25mm	1:40	4.233
25mm_SCS_6h_25mm	1:45	4.233
25mm_SCS_6h_25mm	1:50	10.161
25mm_SCS_6h_25mm	1:55	10.161
25mm_SCS_6h_25mm	2:00	10.161
25mm_SCS_6h_25mm	2:05	18.345
25mm_SCS_6h_25mm	2:10	18.345
25mm_SCS_6h_25mm	2:15	19.05
25mm_SCS_6h_25mm	2:20	19.05
25mm_SCS_6h_25mm	2:25	14.817
25mm_SCS_6h_25mm	2:30	6.351
25mm_SCS_6h_25mm	2:35	6.351
25mm_SCS_6h_25mm	2:40	6.351
25mm_SCS_6h_25mm	2:45	4.233
25mm_SCS_6h_25mm	2:50	4.233
25mm_SCS_6h_25mm	2:55	4.233
25mm_SCS_6h_25mm	3:00	4.233
25mm_SCS_6h_25mm	3:05	4.233
25mm_SCS_6h_25mm	3:10	4.233
25mm_SCS_6h_25mm	3:15	4.233
25mm_SCS_6h_25mm	3:20	3.387
25mm_SCS_6h_25mm	3:25	3.387
25mm_SCS_6h_25mm	3:30	3.387
25mm_SCS_6h_25mm	3:35	3.387
25mm_SCS_6h_25mm	3:40	3.387
25mm_SCS_6h_25mm	3:45	3.387
25mm_SCS_6h_25mm	3:50	3.387
25mm_SCS_6h_25mm	3:55	2.541
25mm_SCS_6h_25mm	4:00	2.541
25mm_SCS_6h_25mm	4:05	2.541
25mm_SCS_6h_25mm	4:10	2.541
25mm_SCS_6h_25mm	4:15	2.541
25mm_SCS_6h_25mm	4:20	2.541
25mm_SCS_6h_25mm	4:25	2.541
25mm_SCS_6h_25mm	4:30	1.977
25mm_SCS_6h_25mm	4:35	1.977
25mm_SCS_6h_25mm	4:40	1.977
25mm_SCS_6h_25mm	4:45	1.977
25mm_SCS_6h_25mm	4:50	1.977
25mm_SCS_6h_25mm	4:55	1.977
25mm_SCS_6h_25mm	5:00	1.977

City of Barrie - Hewitt's Secondary Plan Area Environment Assessment (EA)
 Drainage and Stormwater Management Study

25mm_SCS_6h_25mm	5:05	1.977
25mm_SCS_6h_25mm	5:10	1.977
25mm_SCS_6h_25mm	5:15	1.977
25mm_SCS_6h_25mm	5:20	1.977
25mm_SCS_6h_25mm	5:25	1.128
25mm_SCS_6h_25mm	5:30	1.128
25mm_SCS_6h_25mm	5:35	1.128
25mm_SCS_6h_25mm	5:40	1.128
25mm_SCS_6h_25mm	5:45	1.128
25mm_SCS_6h_25mm	5:50	1.128
25mm_SCS_6h_25mm	5:55	1.128
25mm_SCS_6h_25mm	6:00	0

;SCS_24h_Type_II_107.5mm design storm, total rainfall = 107.5 mm, rain units = mm/hr.

25yr_SCS_24h_Type_II_107.5mm	0:00	1.182
25yr_SCS_24h_Type_II_107.5mm	0:15	1.182
25yr_SCS_24h_Type_II_107.5mm	0:30	1.182
25yr_SCS_24h_Type_II_107.5mm	0:45	1.182
25yr_SCS_24h_Type_II_107.5mm	1:00	1.182
25yr_SCS_24h_Type_II_107.5mm	1:15	1.182
25yr_SCS_24h_Type_II_107.5mm	1:30	1.182
25yr_SCS_24h_Type_II_107.5mm	1:45	1.182
25yr_SCS_24h_Type_II_107.5mm	2:00	1.398
25yr_SCS_24h_Type_II_107.5mm	2:15	1.398
25yr_SCS_24h_Type_II_107.5mm	2:30	1.398
25yr_SCS_24h_Type_II_107.5mm	2:45	1.398
25yr_SCS_24h_Type_II_107.5mm	3:00	1.398
25yr_SCS_24h_Type_II_107.5mm	3:15	1.398
25yr_SCS_24h_Type_II_107.5mm	3:30	1.398
25yr_SCS_24h_Type_II_107.5mm	3:45	1.398
25yr_SCS_24h_Type_II_107.5mm	4:00	1.72
25yr_SCS_24h_Type_II_107.5mm	4:15	1.72
25yr_SCS_24h_Type_II_107.5mm	4:30	1.72
25yr_SCS_24h_Type_II_107.5mm	4:45	1.72
25yr_SCS_24h_Type_II_107.5mm	5:00	1.72
25yr_SCS_24h_Type_II_107.5mm	5:15	1.72
25yr_SCS_24h_Type_II_107.5mm	5:30	1.72
25yr_SCS_24h_Type_II_107.5mm	5:45	1.72
25yr_SCS_24h_Type_II_107.5mm	6:00	1.935
25yr_SCS_24h_Type_II_107.5mm	6:15	1.935
25yr_SCS_24h_Type_II_107.5mm	6:30	1.935
25yr_SCS_24h_Type_II_107.5mm	6:45	1.935
25yr_SCS_24h_Type_II_107.5mm	7:00	2.365
25yr_SCS_24h_Type_II_107.5mm	7:15	2.365
25yr_SCS_24h_Type_II_107.5mm	7:30	2.365
25yr_SCS_24h_Type_II_107.5mm	7:45	2.365
25yr_SCS_24h_Type_II_107.5mm	8:00	2.795
25yr_SCS_24h_Type_II_107.5mm	8:15	2.795
25yr_SCS_24h_Type_II_107.5mm	8:30	3.01
25yr_SCS_24h_Type_II_107.5mm	8:45	3.01
25yr_SCS_24h_Type_II_107.5mm	9:00	3.44

City of Barrie - Hewitt's Secondary Plan Area Environment Assessment (EA)
Drainage and Stormwater Management Study

25yr_SCS_24h_Type_II_107.5mm	9:15	3.44
25yr_SCS_24h_Type_II_107.5mm	9:30	3.87
25yr_SCS_24h_Type_II_107.5mm	9:45	3.87
25yr_SCS_24h_Type_II_107.5mm	10:00	4.945
25yr_SCS_24h_Type_II_107.5mm	10:15	4.945
25yr_SCS_24h_Type_II_107.5mm	10:30	6.665
25yr_SCS_24h_Type_II_107.5mm	10:45	6.665
25yr_SCS_24h_Type_II_107.5mm	11:00	10.32
25yr_SCS_24h_Type_II_107.5mm	11:15	10.32
25yr_SCS_24h_Type_II_107.5mm	11:30	31.82
25yr_SCS_24h_Type_II_107.5mm	11:45	131.58
25yr_SCS_24h_Type_II_107.5mm	12:00	15.48
25yr_SCS_24h_Type_II_107.5mm	12:15	15.48
25yr_SCS_24h_Type_II_107.5mm	12:30	7.955
25yr_SCS_24h_Type_II_107.5mm	12:45	7.955
25yr_SCS_24h_Type_II_107.5mm	13:00	5.805
25yr_SCS_24h_Type_II_107.5mm	13:15	5.805
25yr_SCS_24h_Type_II_107.5mm	13:30	4.515
25yr_SCS_24h_Type_II_107.5mm	13:45	4.515
25yr_SCS_24h_Type_II_107.5mm	14:00	3.225
25yr_SCS_24h_Type_II_107.5mm	14:15	3.225
25yr_SCS_24h_Type_II_107.5mm	14:30	3.225
25yr_SCS_24h_Type_II_107.5mm	14:45	3.225
25yr_SCS_24h_Type_II_107.5mm	15:00	3.225
25yr_SCS_24h_Type_II_107.5mm	15:15	3.225
25yr_SCS_24h_Type_II_107.5mm	15:30	3.225
25yr_SCS_24h_Type_II_107.5mm	15:45	3.225
25yr_SCS_24h_Type_II_107.5mm	16:00	1.935
25yr_SCS_24h_Type_II_107.5mm	16:15	1.935
25yr_SCS_24h_Type_II_107.5mm	16:30	1.935
25yr_SCS_24h_Type_II_107.5mm	16:45	1.935
25yr_SCS_24h_Type_II_107.5mm	17:00	1.935
25yr_SCS_24h_Type_II_107.5mm	17:15	1.935
25yr_SCS_24h_Type_II_107.5mm	17:30	1.935
25yr_SCS_24h_Type_II_107.5mm	17:45	1.935
25yr_SCS_24h_Type_II_107.5mm	18:00	1.935
25yr_SCS_24h_Type_II_107.5mm	18:15	1.935
25yr_SCS_24h_Type_II_107.5mm	18:30	1.935
25yr_SCS_24h_Type_II_107.5mm	18:45	1.935
25yr_SCS_24h_Type_II_107.5mm	19:00	1.935
25yr_SCS_24h_Type_II_107.5mm	19:15	1.935
25yr_SCS_24h_Type_II_107.5mm	19:30	1.935
25yr_SCS_24h_Type_II_107.5mm	19:45	1.935
25yr_SCS_24h_Type_II_107.5mm	20:00	1.29
25yr_SCS_24h_Type_II_107.5mm	20:15	1.29
25yr_SCS_24h_Type_II_107.5mm	20:30	1.29
25yr_SCS_24h_Type_II_107.5mm	20:45	1.29
25yr_SCS_24h_Type_II_107.5mm	21:00	1.29
25yr_SCS_24h_Type_II_107.5mm	21:15	1.29
25yr_SCS_24h_Type_II_107.5mm	21:30	1.29
25yr_SCS_24h_Type_II_107.5mm	21:45	1.29

25yr_SCS_24h_Type_II_107.5mm	22:00	1.29
25yr_SCS_24h_Type_II_107.5mm	22:15	1.29
25yr_SCS_24h_Type_II_107.5mm	22:30	1.29
25yr_SCS_24h_Type_II_107.5mm	22:45	1.29
25yr_SCS_24h_Type_II_107.5mm	23:00	1.29
25yr_SCS_24h_Type_II_107.5mm	23:15	1.29
25yr_SCS_24h_Type_II_107.5mm	23:30	1.29
25yr_SCS_24h_Type_II_107.5mm	23:45	1.29
25yr_SCS_24h_Type_II_107.5mm	24:00	0

;SCS_6h_85.2mm design storm, total rainfall = 85.2 mm, rain units = mm/hr.

25yr_SCS_6h_85.2mm	0:00	5.777
25yr_SCS_6h_85.2mm	0:05	5.777
25yr_SCS_6h_85.2mm	0:10	5.777
25yr_SCS_6h_85.2mm	0:15	5.777
25yr_SCS_6h_85.2mm	0:20	5.777
25yr_SCS_6h_85.2mm	0:25	5.777
25yr_SCS_6h_85.2mm	0:30	5.777
25yr_SCS_6h_85.2mm	0:35	8.66
25yr_SCS_6h_85.2mm	0:40	8.66
25yr_SCS_6h_85.2mm	0:45	8.66
25yr_SCS_6h_85.2mm	0:50	8.66
25yr_SCS_6h_85.2mm	0:55	8.66
25yr_SCS_6h_85.2mm	1:00	8.66
25yr_SCS_6h_85.2mm	1:05	8.66
25yr_SCS_6h_85.2mm	1:10	11.543
25yr_SCS_6h_85.2mm	1:15	11.543
25yr_SCS_6h_85.2mm	1:20	11.543
25yr_SCS_6h_85.2mm	1:25	11.543
25yr_SCS_6h_85.2mm	1:30	14.426
25yr_SCS_6h_85.2mm	1:35	14.426
25yr_SCS_6h_85.2mm	1:40	14.426
25yr_SCS_6h_85.2mm	1:45	14.426
25yr_SCS_6h_85.2mm	1:50	34.629
25yr_SCS_6h_85.2mm	1:55	34.629
25yr_SCS_6h_85.2mm	2:00	34.629
25yr_SCS_6h_85.2mm	2:05	62.52
25yr_SCS_6h_85.2mm	2:10	62.52
25yr_SCS_6h_85.2mm	2:15	64.922
25yr_SCS_6h_85.2mm	2:20	64.922
25yr_SCS_6h_85.2mm	2:25	50.496
25yr_SCS_6h_85.2mm	2:30	21.644
25yr_SCS_6h_85.2mm	2:35	21.644
25yr_SCS_6h_85.2mm	2:40	21.644
25yr_SCS_6h_85.2mm	2:45	14.426
25yr_SCS_6h_85.2mm	2:50	14.426
25yr_SCS_6h_85.2mm	2:55	14.426
25yr_SCS_6h_85.2mm	3:00	14.426
25yr_SCS_6h_85.2mm	3:05	14.426
25yr_SCS_6h_85.2mm	3:10	14.426
25yr_SCS_6h_85.2mm	3:15	14.426

City of Barrie - Hewitt's Secondary Plan Area Environment Assessment (EA)
Drainage and Stormwater Management Study

25yr_SCS_6h_85.2mm	3:20	11.543
25yr_SCS_6h_85.2mm	3:25	11.543
25yr_SCS_6h_85.2mm	3:30	11.543
25yr_SCS_6h_85.2mm	3:35	11.543
25yr_SCS_6h_85.2mm	3:40	11.543
25yr_SCS_6h_85.2mm	3:45	11.543
25yr_SCS_6h_85.2mm	3:50	11.543
25yr_SCS_6h_85.2mm	3:55	8.66
25yr_SCS_6h_85.2mm	4:00	8.66
25yr_SCS_6h_85.2mm	4:05	8.66
25yr_SCS_6h_85.2mm	4:10	8.66
25yr_SCS_6h_85.2mm	4:15	8.66
25yr_SCS_6h_85.2mm	4:20	8.66
25yr_SCS_6h_85.2mm	4:25	8.66
25yr_SCS_6h_85.2mm	4:30	6.738
25yr_SCS_6h_85.2mm	4:35	6.738
25yr_SCS_6h_85.2mm	4:40	6.738
25yr_SCS_6h_85.2mm	4:45	6.738
25yr_SCS_6h_85.2mm	4:50	6.738
25yr_SCS_6h_85.2mm	4:55	6.738
25yr_SCS_6h_85.2mm	5:00	6.738
25yr_SCS_6h_85.2mm	5:05	6.738
25yr_SCS_6h_85.2mm	5:10	6.738
25yr_SCS_6h_85.2mm	5:15	6.738
25yr_SCS_6h_85.2mm	5:20	6.738
25yr_SCS_6h_85.2mm	5:25	3.844
25yr_SCS_6h_85.2mm	5:30	3.844
25yr_SCS_6h_85.2mm	5:35	3.844
25yr_SCS_6h_85.2mm	5:40	3.844
25yr_SCS_6h_85.2mm	5:45	3.844
25yr_SCS_6h_85.2mm	5:50	3.844
25yr_SCS_6h_85.2mm	5:55	3.844
25yr_SCS_6h_85.2mm	6:00	0

;SCS_24h_Type_II_55mm design storm, total rainfall = 55 mm, rain units = mm/hr.

2yr_SCS_24h_Type_II_55mm	0:00	0.605
2yr_SCS_24h_Type_II_55mm	0:15	0.605
2yr_SCS_24h_Type_II_55mm	0:30	0.605
2yr_SCS_24h_Type_II_55mm	0:45	0.605
2yr_SCS_24h_Type_II_55mm	1:00	0.605
2yr_SCS_24h_Type_II_55mm	1:15	0.605
2yr_SCS_24h_Type_II_55mm	1:30	0.605
2yr_SCS_24h_Type_II_55mm	1:45	0.605
2yr_SCS_24h_Type_II_55mm	2:00	0.715
2yr_SCS_24h_Type_II_55mm	2:15	0.715
2yr_SCS_24h_Type_II_55mm	2:30	0.715
2yr_SCS_24h_Type_II_55mm	2:45	0.715
2yr_SCS_24h_Type_II_55mm	3:00	0.715
2yr_SCS_24h_Type_II_55mm	3:15	0.715
2yr_SCS_24h_Type_II_55mm	3:30	0.715
2yr_SCS_24h_Type_II_55mm	3:45	0.715

City of Barrie - Hewitt's Secondary Plan Area Environment Assessment (EA)
Drainage and Stormwater Management Study

2yr_SCS_24h_Type_II_55mm	4:00	0.88
2yr_SCS_24h_Type_II_55mm	4:15	0.88
2yr_SCS_24h_Type_II_55mm	4:30	0.88
2yr_SCS_24h_Type_II_55mm	4:45	0.88
2yr_SCS_24h_Type_II_55mm	5:00	0.88
2yr_SCS_24h_Type_II_55mm	5:15	0.88
2yr_SCS_24h_Type_II_55mm	5:30	0.88
2yr_SCS_24h_Type_II_55mm	5:45	0.88
2yr_SCS_24h_Type_II_55mm	6:00	0.99
2yr_SCS_24h_Type_II_55mm	6:15	0.99
2yr_SCS_24h_Type_II_55mm	6:30	0.99
2yr_SCS_24h_Type_II_55mm	6:45	0.99
2yr_SCS_24h_Type_II_55mm	7:00	1.21
2yr_SCS_24h_Type_II_55mm	7:15	1.21
2yr_SCS_24h_Type_II_55mm	7:30	1.21
2yr_SCS_24h_Type_II_55mm	7:45	1.21
2yr_SCS_24h_Type_II_55mm	8:00	1.43
2yr_SCS_24h_Type_II_55mm	8:15	1.43
2yr_SCS_24h_Type_II_55mm	8:30	1.54
2yr_SCS_24h_Type_II_55mm	8:45	1.54
2yr_SCS_24h_Type_II_55mm	9:00	1.76
2yr_SCS_24h_Type_II_55mm	9:15	1.76
2yr_SCS_24h_Type_II_55mm	9:30	1.98
2yr_SCS_24h_Type_II_55mm	9:45	1.98
2yr_SCS_24h_Type_II_55mm	10:00	2.53
2yr_SCS_24h_Type_II_55mm	10:15	2.53
2yr_SCS_24h_Type_II_55mm	10:30	3.41
2yr_SCS_24h_Type_II_55mm	10:45	3.41
2yr_SCS_24h_Type_II_55mm	11:00	5.28
2yr_SCS_24h_Type_II_55mm	11:15	5.28
2yr_SCS_24h_Type_II_55mm	11:30	16.28
2yr_SCS_24h_Type_II_55mm	11:45	67.32
2yr_SCS_24h_Type_II_55mm	12:00	7.92
2yr_SCS_24h_Type_II_55mm	12:15	7.92
2yr_SCS_24h_Type_II_55mm	12:30	4.07
2yr_SCS_24h_Type_II_55mm	12:45	4.07
2yr_SCS_24h_Type_II_55mm	13:00	2.97
2yr_SCS_24h_Type_II_55mm	13:15	2.97
2yr_SCS_24h_Type_II_55mm	13:30	2.31
2yr_SCS_24h_Type_II_55mm	13:45	2.31
2yr_SCS_24h_Type_II_55mm	14:00	1.65
2yr_SCS_24h_Type_II_55mm	14:15	1.65
2yr_SCS_24h_Type_II_55mm	14:30	1.65
2yr_SCS_24h_Type_II_55mm	14:45	1.65
2yr_SCS_24h_Type_II_55mm	15:00	1.65
2yr_SCS_24h_Type_II_55mm	15:15	1.65
2yr_SCS_24h_Type_II_55mm	15:30	1.65
2yr_SCS_24h_Type_II_55mm	15:45	1.65
2yr_SCS_24h_Type_II_55mm	16:00	0.99
2yr_SCS_24h_Type_II_55mm	16:15	0.99
2yr_SCS_24h_Type_II_55mm	16:30	0.99

City of Barrie - Hewitt's Secondary Plan Area Environment Assessment (EA)
Drainage and Stormwater Management Study

2yr_SCS_24h_Type_II_55mm	16:45	0.99
2yr_SCS_24h_Type_II_55mm	17:00	0.99
2yr_SCS_24h_Type_II_55mm	17:15	0.99
2yr_SCS_24h_Type_II_55mm	17:30	0.99
2yr_SCS_24h_Type_II_55mm	17:45	0.99
2yr_SCS_24h_Type_II_55mm	18:00	0.99
2yr_SCS_24h_Type_II_55mm	18:15	0.99
2yr_SCS_24h_Type_II_55mm	18:30	0.99
2yr_SCS_24h_Type_II_55mm	18:45	0.99
2yr_SCS_24h_Type_II_55mm	19:00	0.99
2yr_SCS_24h_Type_II_55mm	19:15	0.99
2yr_SCS_24h_Type_II_55mm	19:30	0.99
2yr_SCS_24h_Type_II_55mm	19:45	0.99
2yr_SCS_24h_Type_II_55mm	20:00	0.66
2yr_SCS_24h_Type_II_55mm	20:15	0.66
2yr_SCS_24h_Type_II_55mm	20:30	0.66
2yr_SCS_24h_Type_II_55mm	20:45	0.66
2yr_SCS_24h_Type_II_55mm	21:00	0.66
2yr_SCS_24h_Type_II_55mm	21:15	0.66
2yr_SCS_24h_Type_II_55mm	21:30	0.66
2yr_SCS_24h_Type_II_55mm	21:45	0.66
2yr_SCS_24h_Type_II_55mm	22:00	0.66
2yr_SCS_24h_Type_II_55mm	22:15	0.66
2yr_SCS_24h_Type_II_55mm	22:30	0.66
2yr_SCS_24h_Type_II_55mm	22:45	0.66
2yr_SCS_24h_Type_II_55mm	23:00	0.66
2yr_SCS_24h_Type_II_55mm	23:15	0.66
2yr_SCS_24h_Type_II_55mm	23:30	0.66
2yr_SCS_24h_Type_II_55mm	23:45	0.66
2yr_SCS_24h_Type_II_55mm	24:00	0

;SCS_6h_42.3mm design storm, total rainfall = 42.3 mm, rain units = mm/hr.

2yr_SCS_6h_42.3mm	0:00	2.868
2yr_SCS_6h_42.3mm	0:05	2.868
2yr_SCS_6h_42.3mm	0:10	2.868
2yr_SCS_6h_42.3mm	0:15	2.868
2yr_SCS_6h_42.3mm	0:20	2.868
2yr_SCS_6h_42.3mm	0:25	2.868
2yr_SCS_6h_42.3mm	0:30	2.868
2yr_SCS_6h_42.3mm	0:35	4.299
2yr_SCS_6h_42.3mm	0:40	4.299
2yr_SCS_6h_42.3mm	0:45	4.299
2yr_SCS_6h_42.3mm	0:50	4.299
2yr_SCS_6h_42.3mm	0:55	4.299
2yr_SCS_6h_42.3mm	1:00	4.299
2yr_SCS_6h_42.3mm	1:05	4.299
2yr_SCS_6h_42.3mm	1:10	5.731
2yr_SCS_6h_42.3mm	1:15	5.731
2yr_SCS_6h_42.3mm	1:20	5.731
2yr_SCS_6h_42.3mm	1:25	5.731
2yr_SCS_6h_42.3mm	1:30	7.162

2yr_SCS_6h_42.3mm	1:35	7.162
2yr_SCS_6h_42.3mm	1:40	7.162
2yr_SCS_6h_42.3mm	1:45	7.162
2yr_SCS_6h_42.3mm	1:50	17.192
2yr_SCS_6h_42.3mm	1:55	17.192
2yr_SCS_6h_42.3mm	2:00	17.192
2yr_SCS_6h_42.3mm	2:05	31.04
2yr_SCS_6h_42.3mm	2:10	31.04
2yr_SCS_6h_42.3mm	2:15	32.233
2yr_SCS_6h_42.3mm	2:20	32.233
2yr_SCS_6h_42.3mm	2:25	25.07
2yr_SCS_6h_42.3mm	2:30	10.746
2yr_SCS_6h_42.3mm	2:35	10.746
2yr_SCS_6h_42.3mm	2:40	10.746
2yr_SCS_6h_42.3mm	2:45	7.162
2yr_SCS_6h_42.3mm	2:50	7.162
2yr_SCS_6h_42.3mm	2:55	7.162
2yr_SCS_6h_42.3mm	3:00	7.162
2yr_SCS_6h_42.3mm	3:05	7.162
2yr_SCS_6h_42.3mm	3:10	7.162
2yr_SCS_6h_42.3mm	3:15	7.162
2yr_SCS_6h_42.3mm	3:20	5.731
2yr_SCS_6h_42.3mm	3:25	5.731
2yr_SCS_6h_42.3mm	3:30	5.731
2yr_SCS_6h_42.3mm	3:35	5.731
2yr_SCS_6h_42.3mm	3:40	5.731
2yr_SCS_6h_42.3mm	3:45	5.731
2yr_SCS_6h_42.3mm	3:50	5.731
2yr_SCS_6h_42.3mm	3:55	4.299
2yr_SCS_6h_42.3mm	4:00	4.299
2yr_SCS_6h_42.3mm	4:05	4.299
2yr_SCS_6h_42.3mm	4:10	4.299
2yr_SCS_6h_42.3mm	4:15	4.299
2yr_SCS_6h_42.3mm	4:20	4.299
2yr_SCS_6h_42.3mm	4:25	4.299
2yr_SCS_6h_42.3mm	4:30	3.345
2yr_SCS_6h_42.3mm	4:35	3.345
2yr_SCS_6h_42.3mm	4:40	3.345
2yr_SCS_6h_42.3mm	4:45	3.345
2yr_SCS_6h_42.3mm	4:50	3.345
2yr_SCS_6h_42.3mm	4:55	3.345
2yr_SCS_6h_42.3mm	5:00	3.345
2yr_SCS_6h_42.3mm	5:05	3.345
2yr_SCS_6h_42.3mm	5:10	3.345
2yr_SCS_6h_42.3mm	5:15	3.345
2yr_SCS_6h_42.3mm	5:20	3.345
2yr_SCS_6h_42.3mm	5:25	1.909
2yr_SCS_6h_42.3mm	5:30	1.909
2yr_SCS_6h_42.3mm	5:35	1.909
2yr_SCS_6h_42.3mm	5:40	1.909
2yr_SCS_6h_42.3mm	5:45	1.909

City of Barrie - Hewitt's Secondary Plan Area Environment Assessment (EA)
 Drainage and Stormwater Management Study

2yr_SCS_6h_42.3mm	5:50	1.909
2yr_SCS_6h_42.3mm	5:55	1.909
2yr_SCS_6h_42.3mm	6:00	0

;SCS_24h_Type_II_120.6mm design storm, total rainfall = 120.6 mm, rain units = mm/hr.

50yr_SCS_24h_Type_II_120.6mm	0:00	1.327
50yr_SCS_24h_Type_II_120.6mm	0:15	1.327
50yr_SCS_24h_Type_II_120.6mm	0:30	1.327
50yr_SCS_24h_Type_II_120.6mm	0:45	1.327
50yr_SCS_24h_Type_II_120.6mm	1:00	1.327
50yr_SCS_24h_Type_II_120.6mm	1:15	1.327
50yr_SCS_24h_Type_II_120.6mm	1:30	1.327
50yr_SCS_24h_Type_II_120.6mm	1:45	1.327
50yr_SCS_24h_Type_II_120.6mm	2:00	1.568
50yr_SCS_24h_Type_II_120.6mm	2:15	1.568
50yr_SCS_24h_Type_II_120.6mm	2:30	1.568
50yr_SCS_24h_Type_II_120.6mm	2:45	1.568
50yr_SCS_24h_Type_II_120.6mm	3:00	1.568
50yr_SCS_24h_Type_II_120.6mm	3:15	1.568
50yr_SCS_24h_Type_II_120.6mm	3:30	1.568
50yr_SCS_24h_Type_II_120.6mm	3:45	1.568
50yr_SCS_24h_Type_II_120.6mm	4:00	1.93
50yr_SCS_24h_Type_II_120.6mm	4:15	1.93
50yr_SCS_24h_Type_II_120.6mm	4:30	1.93
50yr_SCS_24h_Type_II_120.6mm	4:45	1.93
50yr_SCS_24h_Type_II_120.6mm	5:00	1.93
50yr_SCS_24h_Type_II_120.6mm	5:15	1.93
50yr_SCS_24h_Type_II_120.6mm	5:30	1.93
50yr_SCS_24h_Type_II_120.6mm	5:45	1.93
50yr_SCS_24h_Type_II_120.6mm	6:00	2.171
50yr_SCS_24h_Type_II_120.6mm	6:15	2.171
50yr_SCS_24h_Type_II_120.6mm	6:30	2.171
50yr_SCS_24h_Type_II_120.6mm	6:45	2.171
50yr_SCS_24h_Type_II_120.6mm	7:00	2.653
50yr_SCS_24h_Type_II_120.6mm	7:15	2.653
50yr_SCS_24h_Type_II_120.6mm	7:30	2.653
50yr_SCS_24h_Type_II_120.6mm	7:45	2.653
50yr_SCS_24h_Type_II_120.6mm	8:00	3.136
50yr_SCS_24h_Type_II_120.6mm	8:15	3.136
50yr_SCS_24h_Type_II_120.6mm	8:30	3.377
50yr_SCS_24h_Type_II_120.6mm	8:45	3.377
50yr_SCS_24h_Type_II_120.6mm	9:00	3.859
50yr_SCS_24h_Type_II_120.6mm	9:15	3.859
50yr_SCS_24h_Type_II_120.6mm	9:30	4.342
50yr_SCS_24h_Type_II_120.6mm	9:45	4.342
50yr_SCS_24h_Type_II_120.6mm	10:00	5.548
50yr_SCS_24h_Type_II_120.6mm	10:15	5.548
50yr_SCS_24h_Type_II_120.6mm	10:30	7.477
50yr_SCS_24h_Type_II_120.6mm	10:45	7.477
50yr_SCS_24h_Type_II_120.6mm	11:00	11.578
50yr_SCS_24h_Type_II_120.6mm	11:15	11.578

City of Barrie - Hewitt's Secondary Plan Area Environment Assessment (EA)
Drainage and Stormwater Management Study

50yr_SCS_24h_Type_II_120.6mm	11:30	35.698
50yr_SCS_24h_Type_II_120.6mm	11:45	147.614
50yr_SCS_24h_Type_II_120.6mm	12:00	17.366
50yr_SCS_24h_Type_II_120.6mm	12:15	17.366
50yr_SCS_24h_Type_II_120.6mm	12:30	8.924
50yr_SCS_24h_Type_II_120.6mm	12:45	8.924
50yr_SCS_24h_Type_II_120.6mm	13:00	6.512
50yr_SCS_24h_Type_II_120.6mm	13:15	6.512
50yr_SCS_24h_Type_II_120.6mm	13:30	5.065
50yr_SCS_24h_Type_II_120.6mm	13:45	5.065
50yr_SCS_24h_Type_II_120.6mm	14:00	3.618
50yr_SCS_24h_Type_II_120.6mm	14:15	3.618
50yr_SCS_24h_Type_II_120.6mm	14:30	3.618
50yr_SCS_24h_Type_II_120.6mm	14:45	3.618
50yr_SCS_24h_Type_II_120.6mm	15:00	3.618
50yr_SCS_24h_Type_II_120.6mm	15:15	3.618
50yr_SCS_24h_Type_II_120.6mm	15:30	3.618
50yr_SCS_24h_Type_II_120.6mm	15:45	3.618
50yr_SCS_24h_Type_II_120.6mm	16:00	2.171
50yr_SCS_24h_Type_II_120.6mm	16:15	2.171
50yr_SCS_24h_Type_II_120.6mm	16:30	2.171
50yr_SCS_24h_Type_II_120.6mm	16:45	2.171
50yr_SCS_24h_Type_II_120.6mm	17:00	2.171
50yr_SCS_24h_Type_II_120.6mm	17:15	2.171
50yr_SCS_24h_Type_II_120.6mm	17:30	2.171
50yr_SCS_24h_Type_II_120.6mm	17:45	2.171
50yr_SCS_24h_Type_II_120.6mm	18:00	2.171
50yr_SCS_24h_Type_II_120.6mm	18:15	2.171
50yr_SCS_24h_Type_II_120.6mm	18:30	2.171
50yr_SCS_24h_Type_II_120.6mm	18:45	2.171
50yr_SCS_24h_Type_II_120.6mm	19:00	2.171
50yr_SCS_24h_Type_II_120.6mm	19:15	2.171
50yr_SCS_24h_Type_II_120.6mm	19:30	2.171
50yr_SCS_24h_Type_II_120.6mm	19:45	2.171
50yr_SCS_24h_Type_II_120.6mm	20:00	1.447
50yr_SCS_24h_Type_II_120.6mm	20:15	1.447
50yr_SCS_24h_Type_II_120.6mm	20:30	1.447
50yr_SCS_24h_Type_II_120.6mm	20:45	1.447
50yr_SCS_24h_Type_II_120.6mm	21:00	1.447
50yr_SCS_24h_Type_II_120.6mm	21:15	1.447
50yr_SCS_24h_Type_II_120.6mm	21:30	1.447
50yr_SCS_24h_Type_II_120.6mm	21:45	1.447
50yr_SCS_24h_Type_II_120.6mm	22:00	1.447
50yr_SCS_24h_Type_II_120.6mm	22:15	1.447
50yr_SCS_24h_Type_II_120.6mm	22:30	1.447
50yr_SCS_24h_Type_II_120.6mm	22:45	1.447
50yr_SCS_24h_Type_II_120.6mm	23:00	1.447
50yr_SCS_24h_Type_II_120.6mm	23:15	1.447
50yr_SCS_24h_Type_II_120.6mm	23:30	1.447
50yr_SCS_24h_Type_II_120.6mm	23:45	1.447
50yr_SCS_24h_Type_II_120.6mm	24:00	0

;SCS_6h_95.9mm design storm, total rainfall = 95.9 mm, rain units = mm/hr.

50yr_SCS_6h_95.9mm	0:00	6.502
50yr_SCS_6h_95.9mm	0:05	6.502
50yr_SCS_6h_95.9mm	0:10	6.502
50yr_SCS_6h_95.9mm	0:15	6.502
50yr_SCS_6h_95.9mm	0:20	6.502
50yr_SCS_6h_95.9mm	0:25	6.502
50yr_SCS_6h_95.9mm	0:30	6.502
50yr_SCS_6h_95.9mm	0:35	9.747
50yr_SCS_6h_95.9mm	0:40	9.747
50yr_SCS_6h_95.9mm	0:45	9.747
50yr_SCS_6h_95.9mm	0:50	9.747
50yr_SCS_6h_95.9mm	0:55	9.747
50yr_SCS_6h_95.9mm	1:00	9.747
50yr_SCS_6h_95.9mm	1:05	9.747
50yr_SCS_6h_95.9mm	1:10	12.993
50yr_SCS_6h_95.9mm	1:15	12.993
50yr_SCS_6h_95.9mm	1:20	12.993
50yr_SCS_6h_95.9mm	1:25	12.993
50yr_SCS_6h_95.9mm	1:30	16.238
50yr_SCS_6h_95.9mm	1:35	16.238
50yr_SCS_6h_95.9mm	1:40	16.238
50yr_SCS_6h_95.9mm	1:45	16.238
50yr_SCS_6h_95.9mm	1:50	38.978
50yr_SCS_6h_95.9mm	1:55	38.978
50yr_SCS_6h_95.9mm	2:00	38.978
50yr_SCS_6h_95.9mm	2:05	70.371
50yr_SCS_6h_95.9mm	2:10	70.371
50yr_SCS_6h_95.9mm	2:15	73.076
50yr_SCS_6h_95.9mm	2:20	73.076
50yr_SCS_6h_95.9mm	2:25	56.838
50yr_SCS_6h_95.9mm	2:30	24.362
50yr_SCS_6h_95.9mm	2:35	24.362
50yr_SCS_6h_95.9mm	2:40	24.362
50yr_SCS_6h_95.9mm	2:45	16.238
50yr_SCS_6h_95.9mm	2:50	16.238
50yr_SCS_6h_95.9mm	2:55	16.238
50yr_SCS_6h_95.9mm	3:00	16.238
50yr_SCS_6h_95.9mm	3:05	16.238
50yr_SCS_6h_95.9mm	3:10	16.238
50yr_SCS_6h_95.9mm	3:15	16.238
50yr_SCS_6h_95.9mm	3:20	12.993
50yr_SCS_6h_95.9mm	3:25	12.993
50yr_SCS_6h_95.9mm	3:30	12.993
50yr_SCS_6h_95.9mm	3:35	12.993
50yr_SCS_6h_95.9mm	3:40	12.993
50yr_SCS_6h_95.9mm	3:45	12.993
50yr_SCS_6h_95.9mm	3:50	12.993
50yr_SCS_6h_95.9mm	3:55	9.747
50yr_SCS_6h_95.9mm	4:00	9.747

City of Barrie - Hewitt's Secondary Plan Area Environment Assessment (EA)
 Drainage and Stormwater Management Study

50yr_SCS_6h_95.9mm	4:05	9.747
50yr_SCS_6h_95.9mm	4:10	9.747
50yr_SCS_6h_95.9mm	4:15	9.747
50yr_SCS_6h_95.9mm	4:20	9.747
50yr_SCS_6h_95.9mm	4:25	9.747
50yr_SCS_6h_95.9mm	4:30	7.584
50yr_SCS_6h_95.9mm	4:35	7.584
50yr_SCS_6h_95.9mm	4:40	7.584
50yr_SCS_6h_95.9mm	4:45	7.584
50yr_SCS_6h_95.9mm	4:50	7.584
50yr_SCS_6h_95.9mm	4:55	7.584
50yr_SCS_6h_95.9mm	5:00	7.584
50yr_SCS_6h_95.9mm	5:05	7.584
50yr_SCS_6h_95.9mm	5:10	7.584
50yr_SCS_6h_95.9mm	5:15	7.584
50yr_SCS_6h_95.9mm	5:20	7.584
50yr_SCS_6h_95.9mm	5:25	4.327
50yr_SCS_6h_95.9mm	5:30	4.327
50yr_SCS_6h_95.9mm	5:35	4.327
50yr_SCS_6h_95.9mm	5:40	4.327
50yr_SCS_6h_95.9mm	5:45	4.327
50yr_SCS_6h_95.9mm	5:50	4.327
50yr_SCS_6h_95.9mm	5:55	4.327
50yr_SCS_6h_95.9mm	6:00	0

;SCS_24h_Type_II_76mm design storm, total rainfall = 76 mm, rain units = mm/hr.

5yr_SCS_24h_Type_II_76mm	0:00	0.836
5yr_SCS_24h_Type_II_76mm	0:15	0.836
5yr_SCS_24h_Type_II_76mm	0:30	0.836
5yr_SCS_24h_Type_II_76mm	0:45	0.836
5yr_SCS_24h_Type_II_76mm	1:00	0.836
5yr_SCS_24h_Type_II_76mm	1:15	0.836
5yr_SCS_24h_Type_II_76mm	1:30	0.836
5yr_SCS_24h_Type_II_76mm	1:45	0.836
5yr_SCS_24h_Type_II_76mm	2:00	0.988
5yr_SCS_24h_Type_II_76mm	2:15	0.988
5yr_SCS_24h_Type_II_76mm	2:30	0.988
5yr_SCS_24h_Type_II_76mm	2:45	0.988
5yr_SCS_24h_Type_II_76mm	3:00	0.988
5yr_SCS_24h_Type_II_76mm	3:15	0.988
5yr_SCS_24h_Type_II_76mm	3:30	0.988
5yr_SCS_24h_Type_II_76mm	3:45	0.988
5yr_SCS_24h_Type_II_76mm	4:00	1.216
5yr_SCS_24h_Type_II_76mm	4:15	1.216
5yr_SCS_24h_Type_II_76mm	4:30	1.216
5yr_SCS_24h_Type_II_76mm	4:45	1.216
5yr_SCS_24h_Type_II_76mm	5:00	1.216
5yr_SCS_24h_Type_II_76mm	5:15	1.216
5yr_SCS_24h_Type_II_76mm	5:30	1.216
5yr_SCS_24h_Type_II_76mm	5:45	1.216
5yr_SCS_24h_Type_II_76mm	6:00	1.368

City of Barrie - Hewitt's Secondary Plan Area Environment Assessment (EA)
Drainage and Stormwater Management Study

5yr_SCS_24h_Type_II_76mm	6:15	1.368
5yr_SCS_24h_Type_II_76mm	6:30	1.368
5yr_SCS_24h_Type_II_76mm	6:45	1.368
5yr_SCS_24h_Type_II_76mm	7:00	1.672
5yr_SCS_24h_Type_II_76mm	7:15	1.672
5yr_SCS_24h_Type_II_76mm	7:30	1.672
5yr_SCS_24h_Type_II_76mm	7:45	1.672
5yr_SCS_24h_Type_II_76mm	8:00	1.976
5yr_SCS_24h_Type_II_76mm	8:15	1.976
5yr_SCS_24h_Type_II_76mm	8:30	2.128
5yr_SCS_24h_Type_II_76mm	8:45	2.128
5yr_SCS_24h_Type_II_76mm	9:00	2.432
5yr_SCS_24h_Type_II_76mm	9:15	2.432
5yr_SCS_24h_Type_II_76mm	9:30	2.736
5yr_SCS_24h_Type_II_76mm	9:45	2.736
5yr_SCS_24h_Type_II_76mm	10:00	3.496
5yr_SCS_24h_Type_II_76mm	10:15	3.496
5yr_SCS_24h_Type_II_76mm	10:30	4.712
5yr_SCS_24h_Type_II_76mm	10:45	4.712
5yr_SCS_24h_Type_II_76mm	11:00	7.296
5yr_SCS_24h_Type_II_76mm	11:15	7.296
5yr_SCS_24h_Type_II_76mm	11:30	22.496
5yr_SCS_24h_Type_II_76mm	11:45	93.024
5yr_SCS_24h_Type_II_76mm	12:00	10.944
5yr_SCS_24h_Type_II_76mm	12:15	10.944
5yr_SCS_24h_Type_II_76mm	12:30	5.624
5yr_SCS_24h_Type_II_76mm	12:45	5.624
5yr_SCS_24h_Type_II_76mm	13:00	4.104
5yr_SCS_24h_Type_II_76mm	13:15	4.104
5yr_SCS_24h_Type_II_76mm	13:30	3.192
5yr_SCS_24h_Type_II_76mm	13:45	3.192
5yr_SCS_24h_Type_II_76mm	14:00	2.28
5yr_SCS_24h_Type_II_76mm	14:15	2.28
5yr_SCS_24h_Type_II_76mm	14:30	2.28
5yr_SCS_24h_Type_II_76mm	14:45	2.28
5yr_SCS_24h_Type_II_76mm	15:00	2.28
5yr_SCS_24h_Type_II_76mm	15:15	2.28
5yr_SCS_24h_Type_II_76mm	15:30	2.28
5yr_SCS_24h_Type_II_76mm	15:45	2.28
5yr_SCS_24h_Type_II_76mm	16:00	1.368
5yr_SCS_24h_Type_II_76mm	16:15	1.368
5yr_SCS_24h_Type_II_76mm	16:30	1.368
5yr_SCS_24h_Type_II_76mm	16:45	1.368
5yr_SCS_24h_Type_II_76mm	17:00	1.368
5yr_SCS_24h_Type_II_76mm	17:15	1.368
5yr_SCS_24h_Type_II_76mm	17:30	1.368
5yr_SCS_24h_Type_II_76mm	17:45	1.368
5yr_SCS_24h_Type_II_76mm	18:00	1.368
5yr_SCS_24h_Type_II_76mm	18:15	1.368
5yr_SCS_24h_Type_II_76mm	18:30	1.368
5yr_SCS_24h_Type_II_76mm	18:45	1.368

City of Barrie - Hewitt's Secondary Plan Area Environment Assessment (EA)
Drainage and Stormwater Management Study

5yr_SCS_24h_Type_II_76mm	19:00	1.368
5yr_SCS_24h_Type_II_76mm	19:15	1.368
5yr_SCS_24h_Type_II_76mm	19:30	1.368
5yr_SCS_24h_Type_II_76mm	19:45	1.368
5yr_SCS_24h_Type_II_76mm	20:00	0.912
5yr_SCS_24h_Type_II_76mm	20:15	0.912
5yr_SCS_24h_Type_II_76mm	20:30	0.912
5yr_SCS_24h_Type_II_76mm	20:45	0.912
5yr_SCS_24h_Type_II_76mm	21:00	0.912
5yr_SCS_24h_Type_II_76mm	21:15	0.912
5yr_SCS_24h_Type_II_76mm	21:30	0.912
5yr_SCS_24h_Type_II_76mm	21:45	0.912
5yr_SCS_24h_Type_II_76mm	22:00	0.912
5yr_SCS_24h_Type_II_76mm	22:15	0.912
5yr_SCS_24h_Type_II_76mm	22:30	0.912
5yr_SCS_24h_Type_II_76mm	22:45	0.912
5yr_SCS_24h_Type_II_76mm	23:00	0.912
5yr_SCS_24h_Type_II_76mm	23:15	0.912
5yr_SCS_24h_Type_II_76mm	23:30	0.912
5yr_SCS_24h_Type_II_76mm	23:45	0.912
5yr_SCS_24h_Type_II_76mm	24:00	0

;SCS_6h_59.5mm design storm, total rainfall = 59.5 mm, rain units = mm/hr.

5yr_SCS_6h_59.5mm	0:00	4.034
5yr_SCS_6h_59.5mm	0:05	4.034
5yr_SCS_6h_59.5mm	0:10	4.034
5yr_SCS_6h_59.5mm	0:15	4.034
5yr_SCS_6h_59.5mm	0:20	4.034
5yr_SCS_6h_59.5mm	0:25	4.034
5yr_SCS_6h_59.5mm	0:30	4.034
5yr_SCS_6h_59.5mm	0:35	6.048
5yr_SCS_6h_59.5mm	0:40	6.048
5yr_SCS_6h_59.5mm	0:45	6.048
5yr_SCS_6h_59.5mm	0:50	6.048
5yr_SCS_6h_59.5mm	0:55	6.048
5yr_SCS_6h_59.5mm	1:00	6.048
5yr_SCS_6h_59.5mm	1:05	6.048
5yr_SCS_6h_59.5mm	1:10	8.061
5yr_SCS_6h_59.5mm	1:15	8.061
5yr_SCS_6h_59.5mm	1:20	8.061
5yr_SCS_6h_59.5mm	1:25	8.061
5yr_SCS_6h_59.5mm	1:30	10.075
5yr_SCS_6h_59.5mm	1:35	10.075
5yr_SCS_6h_59.5mm	1:40	10.075
5yr_SCS_6h_59.5mm	1:45	10.075
5yr_SCS_6h_59.5mm	1:50	24.183
5yr_SCS_6h_59.5mm	1:55	24.183
5yr_SCS_6h_59.5mm	2:00	24.183
5yr_SCS_6h_59.5mm	2:05	43.661
5yr_SCS_6h_59.5mm	2:10	43.661
5yr_SCS_6h_59.5mm	2:15	45.339

5yr_SCS_6h_59.5mm	2:20	45.339
5yr_SCS_6h_59.5mm	2:25	35.264
5yr_SCS_6h_59.5mm	2:30	15.115
5yr_SCS_6h_59.5mm	2:35	15.115
5yr_SCS_6h_59.5mm	2:40	15.115
5yr_SCS_6h_59.5mm	2:45	10.075
5yr_SCS_6h_59.5mm	2:50	10.075
5yr_SCS_6h_59.5mm	2:55	10.075
5yr_SCS_6h_59.5mm	3:00	10.075
5yr_SCS_6h_59.5mm	3:05	10.075
5yr_SCS_6h_59.5mm	3:10	10.075
5yr_SCS_6h_59.5mm	3:15	10.075
5yr_SCS_6h_59.5mm	3:20	8.061
5yr_SCS_6h_59.5mm	3:25	8.061
5yr_SCS_6h_59.5mm	3:30	8.061
5yr_SCS_6h_59.5mm	3:35	8.061
5yr_SCS_6h_59.5mm	3:40	8.061
5yr_SCS_6h_59.5mm	3:45	8.061
5yr_SCS_6h_59.5mm	3:50	8.061
5yr_SCS_6h_59.5mm	3:55	6.048
5yr_SCS_6h_59.5mm	4:00	6.048
5yr_SCS_6h_59.5mm	4:05	6.048
5yr_SCS_6h_59.5mm	4:10	6.048
5yr_SCS_6h_59.5mm	4:15	6.048
5yr_SCS_6h_59.5mm	4:20	6.048
5yr_SCS_6h_59.5mm	4:25	6.048
5yr_SCS_6h_59.5mm	4:30	4.705
5yr_SCS_6h_59.5mm	4:35	4.705
5yr_SCS_6h_59.5mm	4:40	4.705
5yr_SCS_6h_59.5mm	4:45	4.705
5yr_SCS_6h_59.5mm	4:50	4.705
5yr_SCS_6h_59.5mm	4:55	4.705
5yr_SCS_6h_59.5mm	5:00	4.705
5yr_SCS_6h_59.5mm	5:05	4.705
5yr_SCS_6h_59.5mm	5:10	4.705
5yr_SCS_6h_59.5mm	5:15	4.705
5yr_SCS_6h_59.5mm	5:20	4.705
5yr_SCS_6h_59.5mm	5:25	2.685
5yr_SCS_6h_59.5mm	5:30	2.685
5yr_SCS_6h_59.5mm	5:35	2.685
5yr_SCS_6h_59.5mm	5:40	2.685
5yr_SCS_6h_59.5mm	5:45	2.685
5yr_SCS_6h_59.5mm	5:50	2.685
5yr_SCS_6h_59.5mm	5:55	2.685
5yr_SCS_6h_59.5mm	6:00	0

;Hurricane Hazel (Southern Ontario) design storm for 0 - 25 km², total rainfall = 211 mm (100%), rain units = mm/hr.

Hurricane_Hazel_(Southern_Ontario)	0	6.33
Hurricane_Hazel_(Southern_Ontario)	1	4.22
Hurricane_Hazel_(Southern_Ontario)	2	6.33

City of Barrie - Hewitt's Secondary Plan Area Environment Assessment (EA)
Drainage and Stormwater Management Study

Hurricane_Hazel_(Southern_Ontario)	3	12.66
Hurricane_Hazel_(Southern_Ontario)	4	16.88
Hurricane_Hazel_(Southern_Ontario)	5	12.66
Hurricane_Hazel_(Southern_Ontario)	6	23.21
Hurricane_Hazel_(Southern_Ontario)	7	12.66
Hurricane_Hazel_(Southern_Ontario)	8	12.66
Hurricane_Hazel_(Southern_Ontario)	9	52.75
Hurricane_Hazel_(Southern_Ontario)	10	37.98
Hurricane_Hazel_(Southern_Ontario)	11	12.66
Hurricane_Hazel_(Southern_Ontario)	12	0

NO_RAIN	0:0	0
NO_RAIN	0:5	0.1
NO_RAIN	0:10	0

;SCS_6h_1mm design storm, total rainfall = 1 mm, rain units = mm/hr.

SCS_6h_1mm_Jordan	0:00	0.0678
SCS_6h_1mm_Jordan	0:05	0.0678
SCS_6h_1mm_Jordan	0:10	0.0678
SCS_6h_1mm_Jordan	0:15	0.0678
SCS_6h_1mm_Jordan	0:20	0.0678
SCS_6h_1mm_Jordan	0:25	0.0678
SCS_6h_1mm_Jordan	0:30	0.0678
SCS_6h_1mm_Jordan	0:35	0.102
SCS_6h_1mm_Jordan	0:40	0.102
SCS_6h_1mm_Jordan	0:45	0.102
SCS_6h_1mm_Jordan	0:50	0.102
SCS_6h_1mm_Jordan	0:55	0.102
SCS_6h_1mm_Jordan	1:00	0.102
SCS_6h_1mm_Jordan	1:05	0.102
SCS_6h_1mm_Jordan	1:10	0.135
SCS_6h_1mm_Jordan	1:15	0.135
SCS_6h_1mm_Jordan	1:20	0.135
SCS_6h_1mm_Jordan	1:25	0.135
SCS_6h_1mm_Jordan	1:30	0.169
SCS_6h_1mm_Jordan	1:35	0.169
SCS_6h_1mm_Jordan	1:40	0.169
SCS_6h_1mm_Jordan	1:45	0.169
SCS_6h_1mm_Jordan	1:50	0.406
SCS_6h_1mm_Jordan	1:55	0.406
SCS_6h_1mm_Jordan	2:00	0.406
SCS_6h_1mm_Jordan	2:05	0.734
SCS_6h_1mm_Jordan	2:10	0.734
SCS_6h_1mm_Jordan	2:15	0.762
SCS_6h_1mm_Jordan	2:20	0.762
SCS_6h_1mm_Jordan	2:25	0.593
SCS_6h_1mm_Jordan	2:30	0.254
SCS_6h_1mm_Jordan	2:35	0.254
SCS_6h_1mm_Jordan	2:40	0.254
SCS_6h_1mm_Jordan	2:45	0.169
SCS_6h_1mm_Jordan	2:50	0.169

City of Barrie - Hewitt's Secondary Plan Area Environment Assessment (EA)
 Drainage and Stormwater Management Study

SCS_6h_1mm_Jordan	2:55	0.169
SCS_6h_1mm_Jordan	3:00	0.169
SCS_6h_1mm_Jordan	3:05	0.169
SCS_6h_1mm_Jordan	3:10	0.169
SCS_6h_1mm_Jordan	3:15	0.169
SCS_6h_1mm_Jordan	3:20	0.135
SCS_6h_1mm_Jordan	3:25	0.135
SCS_6h_1mm_Jordan	3:30	0.135
SCS_6h_1mm_Jordan	3:35	0.135
SCS_6h_1mm_Jordan	3:40	0.135
SCS_6h_1mm_Jordan	3:45	0.135
SCS_6h_1mm_Jordan	3:50	0.135
SCS_6h_1mm_Jordan	3:55	0.102
SCS_6h_1mm_Jordan	4:00	0.102
SCS_6h_1mm_Jordan	4:05	0.102
SCS_6h_1mm_Jordan	4:10	0.102
SCS_6h_1mm_Jordan	4:15	0.102
SCS_6h_1mm_Jordan	4:20	0.102
SCS_6h_1mm_Jordan	4:25	0.102
SCS_6h_1mm_Jordan	4:30	0.0791
SCS_6h_1mm_Jordan	4:35	0.0791
SCS_6h_1mm_Jordan	4:40	0.0791
SCS_6h_1mm_Jordan	4:45	0.0791
SCS_6h_1mm_Jordan	4:50	0.0791
SCS_6h_1mm_Jordan	4:55	0.0791
SCS_6h_1mm_Jordan	5:00	0.0791
SCS_6h_1mm_Jordan	5:05	0.0791
SCS_6h_1mm_Jordan	5:10	0.0791
SCS_6h_1mm_Jordan	5:15	0.0791
SCS_6h_1mm_Jordan	5:20	0.0791
SCS_6h_1mm_Jordan	5:25	0.0451
SCS_6h_1mm_Jordan	5:30	0.0451
SCS_6h_1mm_Jordan	5:35	0.0451
SCS_6h_1mm_Jordan	5:40	0.0451
SCS_6h_1mm_Jordan	5:45	0.0451
SCS_6h_1mm_Jordan	5:50	0.0451
SCS_6h_1mm_Jordan	5:55	0.0451
SCS_6h_1mm_Jordan	6:00	0

[REPORT]
 INPUT YES
 CONTROLS NO
 SUBCATCHMENTS ALL
 NODES ALL
 LINKS ALL

[TAGS]

[MAP]
 DIMENSIONS 606333.733248916 4908994.96264225 612745.416193986 4914048.05798445
 UNITS Meters

[COORDINATES]

;;Node	X-Coord	Y-Coord
BBP1	611021.01	4913493.338
BBP2	611941.319	4913802.745
Hew1	608648.027	4909837.19
Hew2	608826.481	4911301.51
Hew3	610463.218	4910453.891
Hew4	610173.659	4911746.907
Hew5	612453.976	4912521.533
Lover's1	607119.607	4909322.963
Lover's2	607172.873	4910758.344
YSLP	609746.016	4910504.209

[VERTICES]

;;Link	X-Coord	Y-Coord
--------	---------	---------

[POLYGONS]

;;Subcatchment	X-Coord	Y-Coord
BBPR.R-01	611011.526	4913510.233
BBPR.R-01	611191.448	4913568.867
BBPR.R-01	611196.737	4913577.769
BBPR.R-01	611215.05	4913580.792
BBPR.R-01	611225.952	4913579.622
BBPR.R-01	611497.89	4913666.276
BBPR.R-01	611506.571	4913635.923
BBPR.R-01	611451.785	4913618.042
BBPR.R-01	611445.839	4913607.774
BBPR.R-01	611407.29	4913594.915
BBPR.R-01	611396.353	4913598.118
BBPR.R-01	611020.977	4913474.46
BBPR.R-01	611011.526	4913510.233
BBPR.R-02	611497.05	4913666.72
BBPR.R-02	611947.283	4913818.372
BBPR.R-02	611948.399	4913800.599
BBPR.R-02	611833.176	4913752.526
BBPR.R-02	611815.467	4913744.135
BBPR.R-02	611508.906	4913637.798
BBPR.R-02	611497.05	4913666.72
LR.R-01	606904.484	4909296.359
LR.R-01	606919.725	4909287.756
LR.R-01	606976.747	4909304.18
LR.R-01	607035.589	4909317.978
LR.R-01	607109.825	4909340.881
LR.R-01	607123.682	4909308.357
LR.R-01	607023.416	4909274.848
LR.R-01	606921.81	4909241.761
LR.R-01	606919.211	4909237.735

City of Barrie - Hewitt's Secondary Plan Area Environment Assessment (EA)
Drainage and Stormwater Management Study

LR.R-01	606920.309	4909224.918
LR.R-01	606903.881	4909224.649
LR.R-01	606886.818	4909290.326
LR.R-01	606904.484	4909296.359
LR.R-02	607110.706	4909341.348
LR.R-02	607384.988	4909433.471
LR.R-02	607645.565	4909521.406
LR.R-02	608040.403	4909654.055
LR.R-02	608052.051	4909621.054
LR.R-02	607658.551	4909487.983
LR.R-02	607477.884	4909428.802
LR.R-02	607124.133	4909307.922
LR.R-02	607110.706	4909341.348
LR.R-03	608040.451	4909652.312
LR.R-03	608625.074	4909851.508
LR.R-03	608636.487	4909819.872
LR.R-03	608051.136	4909620.652
LR.R-03	608040.451	4909652.312
LR.R-04	608627.655	4909852.14
LR.R-04	609111.075	4910014.959
LR.R-04	609758.01	4910239.222
LR.R-04	609761.023	4910244.421
LR.R-04	609778.861	4910228.245
LR.R-04	609812.777	4910239.112
LR.R-04	609810.278	4910264.814
LR.R-04	609824.844	4910258.881
LR.R-04	610104.296	4910354.201
LR.R-04	610125.511	4910321.607
LR.R-04	609828.566	4910221.872
LR.R-04	609817.324	4910214.475
LR.R-04	609816.447	4910205.192
LR.R-04	609784.614	4910193.33
LR.R-04	609771.029	4910202.369
LR.R-04	609116.503	4909981.333
LR.R-04	608638.668	4909820.962
LR.R-04	608627.655	4909852.14
LR.R-05	610102.083	4910357.806
LR.R-05	610459.339	4910471.948
LR.R-05	610472.204	4910440.221
LR.R-05	610127.314	4910323.819
LR.R-05	610102.083	4910357.806
LR.R-06	610462.474	4910474.602
LR.R-06	611044.274	4910667.537
LR.R-06	611537.658	4910828.7
LR.R-06	611559.864	4910830.245
LR.R-06	611577.649	4910816.556
LR.R-06	611567.301	4910805.884
LR.R-06	611044.869	4910632.563
LR.R-06	610474.744	4910440.982
LR.R-06	610462.474	4910474.602
MD.R-01	606641.267	4910533.825

City of Barrie - Hewitt's Secondary Plan Area Environment Assessment (EA)
Drainage and Stormwater Management Study

MD.R-01	606625.173	4910609.56
MD.R-01	606644.914	4910613.83
MD.R-01	606646.065	4910603.978
MD.R-01	606656.974	4910603.169
MD.R-01	607170.263	4910771.476
MD.R-01	607183.8	4910731.228
MD.R-01	606666.546	4910562.854
MD.R-01	606656.837	4910550.851
MD.R-01	606660.959	4910541.047
MD.R-01	606641.267	4910533.825
MD.R-02	607175.23	4910770.58
MD.R-02	607356.586	4910824.876
MD.R-02	607365.319	4910835.877
MD.R-02	607374.199	4910837.997
MD.R-02	607381.13	4910838.111
MD.R-02	607604.768	4910910.885
MD.R-02	607611.585	4910917.907
MD.R-02	607626.389	4910921.112
MD.R-02	607640.349	4910915.42
MD.R-02	608099.312	4911072.042
MD.R-02	608104.149	4911079.031
MD.R-02	608142.667	4911085.591
MD.R-02	608565.234	4911225.849
MD.R-02	608576.65	4911194.454
MD.R-02	608218.214	4911069.076
MD.R-02	607777.904	4910922.623
MD.R-02	607385.837	4910792.784
MD.R-02	607367.169	4910783.593
MD.R-02	607184.725	4910735.192
MD.R-02	607175.23	4910770.58
MD.R-03	608568.017	4911225.192
MD.R-03	608621.476	4911242.877
MD.R-03	608624.48	4911252.381
MD.R-03	608645.431	4911260.082
MD.R-03	608652.947	4911251.804
MD.R-03	608925.505	4911340.371
MD.R-03	608937.638	4911308.013
MD.R-03	608580.149	4911192.823
MD.R-03	608568.017	4911225.192
MD.R-04	608928.683	4911339.383
MD.R-04	609056.548	4911382.471
MD.R-04	609056.425	4911389.821
MD.R-04	609072.178	4911393.235
MD.R-04	609085.963	4911388.214
MD.R-04	609192.788	4911428.861
MD.R-04	609202.832	4911395.418
MD.R-04	608938.657	4911310.13
MD.R-04	608928.683	4911339.383
MD.R-05	609272.444	4911455.401
MD.R-05	609273.78	4911462.308
MD.R-05	609360.248	4911498.884

City of Barrie - Hewitt's Secondary Plan Area Environment Assessment (EA)
Drainage and Stormwater Management Study

MD.R-05	609374.718	4911515.931
MD.R-05	609399.935	4911520.555
MD.R-05	609420.902	4911527.208
MD.R-05	609860.225	4911662.721
MD.R-05	610162.022	4911765.482
MD.R-05	610176.339	4911728.963
MD.R-05	609910.117	4911641.504
MD.R-05	609635.494	4911551.813
MD.R-05	609613.42	4911548.292
MD.R-05	609444.804	4911484.545
MD.R-05	609393.421	4911468.98
MD.R-05	609360.987	4911454.782
MD.R-05	609236.374	4911406.483
MD.R-05	609203.851	4911397.536
MD.R-05	609193.215	4911429.426
MD.R-05	609272.444	4911455.401
MD.R-06	610164.292	4911762.192
MD.R-06	611348.13	4912167.676
MD.R-06	611634.19	4912261.791
MD.R-06	611738.451	4912292.052
MD.R-06	611750.333	4912265.676
MD.R-06	611091.05	4912049.383
MD.R-06	610439.536	4911821.892
MD.R-06	610183.851	4911732.134
MD.R-06	610164.292	4911762.192
MD.R-07	611742.228	4912294.025
MD.R-07	612439.229	4912530.002
MD.R-07	612449.209	4912503.595
MD.R-07	611750.301	4912267.574
MD.R-07	611742.228	4912294.025
YS.R-01	609729.499	4910496.698
YS.R-01	609761.944	4910503.242
YS.R-01	609805.699	4910267.258
YS.R-01	609812.17	4910240.931
YS.R-01	609777.354	4910231.934
YS.R-01	609767.407	4910249.792
YS.R-01	609729.499	4910496.698
YS.R-02	609672.787	4910786.526
YS.R-02	609706.416	4910794.29
YS.R-02	609759.452	4910508.006
YS.R-02	609727.028	4910500.252
YS.R-02	609672.787	4910786.526
YS.R-03	609405.407	4911459.658
YS.R-03	609441.466	4911478.377
YS.R-03	609542.836	4911307.894
YS.R-03	609596.024	4911209.1
YS.R-03	609635.5	4911114.606
YS.R-03	609661.062	4911036.492
YS.R-03	609704.515	4910795.545
YS.R-03	609671.28	4910788.945
YS.R-03	609636.519	4910963.578

YS.R-03	609621.489	4911046.401
YS.R-03	609591.027	4911145.579
YS.R-03	609551.906	4911218.933
YS.R-03	609405.407	4911459.658

[SYMBOLS]

;;Gage X-Coord Y-Coord
;;-----