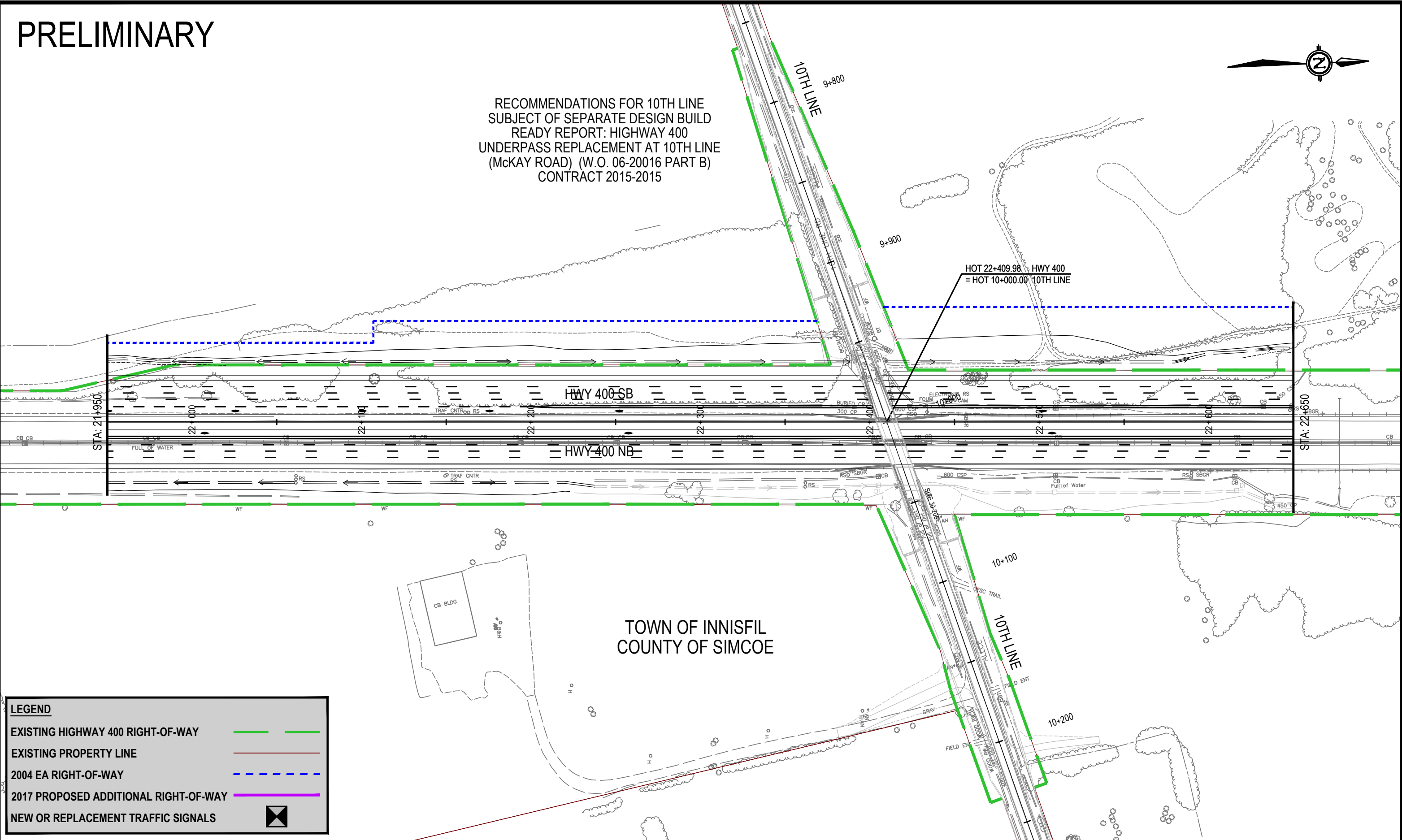


APPENDIX B

MTO Highway 400 TESR Update Preliminary Design - Excerpt

PRELIMINARY

RECOMMENDATIONS FOR 10TH LINE
SUBJECT OF SEPARATE DESIGN BUILD
READY REPORT: HIGHWAY 400
UNDERPASS REPLACEMENT AT 10TH LINE
(McKAY ROAD) (W.O. 06-20016 PART B)
CONTRACT 2015-2015



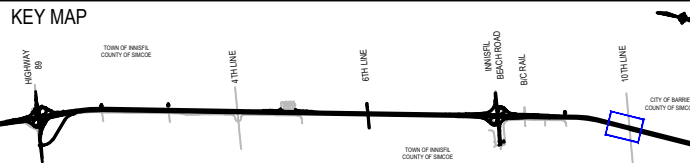
TOWN OF INNISFIL
COUNTY OF SIMCOE

LEGEND

- EXISTING HIGHWAY 400 RIGHT-OF-WAY
- EXISTING PROPERTY LINE
- 2004 EA RIGHT-OF-WAY
- 2017 PROPOSED ADDITIONAL RIGHT-OF-WAY
- NEW OR REPLACEMENT TRAFFIC SIGNALS



HIGHWAY 400
HIGHWAY 89 TO JUNCTION AT HIGHWAY 11
W.O. 06-20016



HIGHWAY 400
RECOMMENDED PLAN
STATION 21+950 TO STATION 22+650

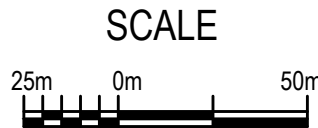
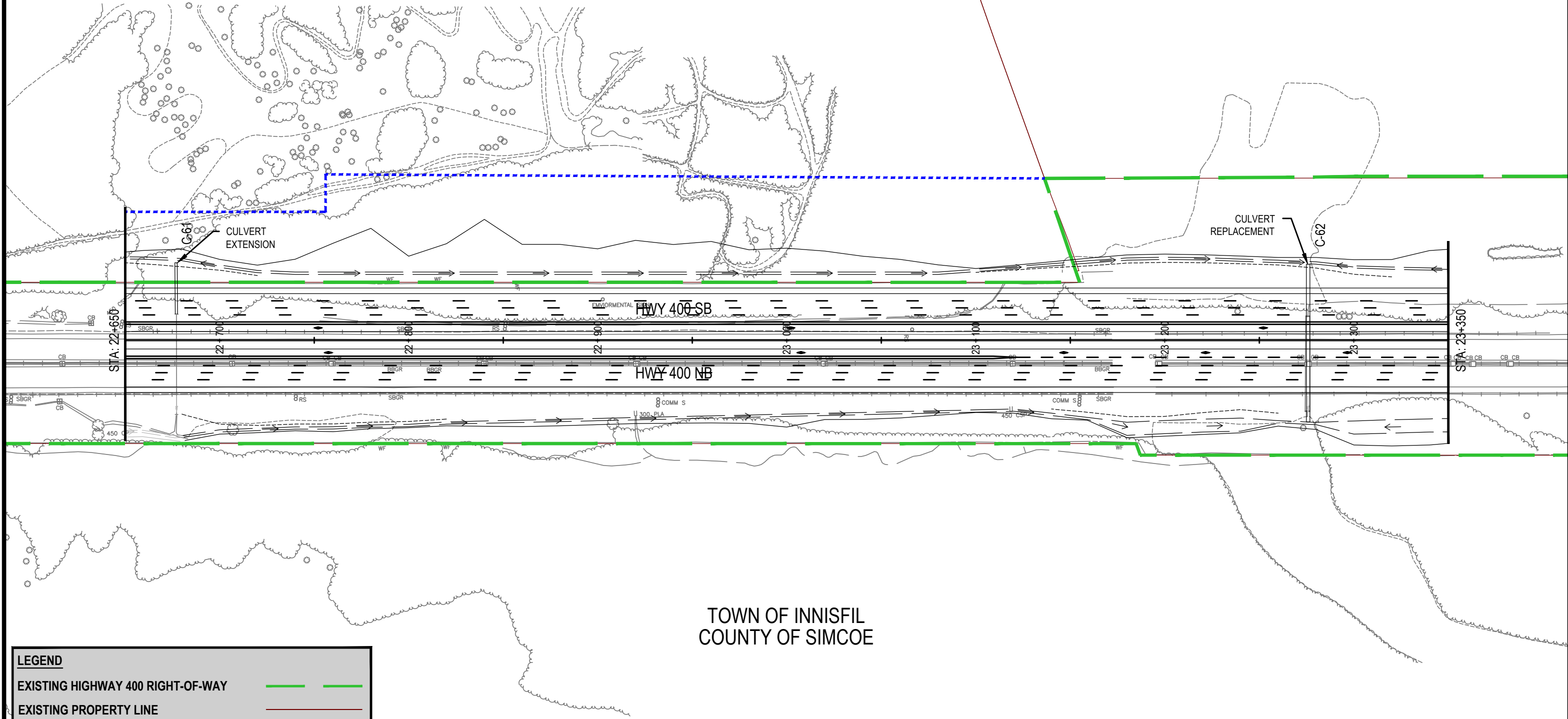


PLATE
22

PRELIMINARY

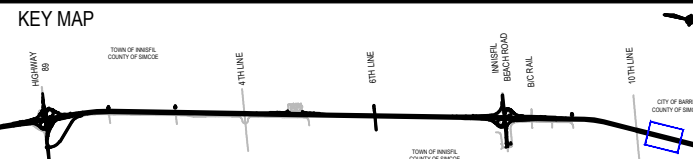


TOWN OF INNISFIL
COUNTY OF SIMCOE

LEGEND	
EXISTING HIGHWAY 400 RIGHT-OF-WAY	
EXISTING PROPERTY LINE	
2004 EA RIGHT-OF-WAY	
2017 PROPOSED ADDITIONAL RIGHT-OF-WAY	
NEW OR REPLACEMENT TRAFFIC SIGNALS	



HIGHWAY 400
HIGHWAY 89 TO JUNCTION AT HIGHWAY 11
W.O. 06-20016



HIGHWAY 400
RECOMMENDED PLAN
STATION 22+650 TO STATION 23+350

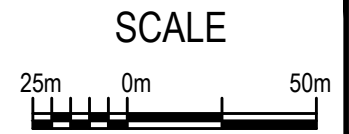
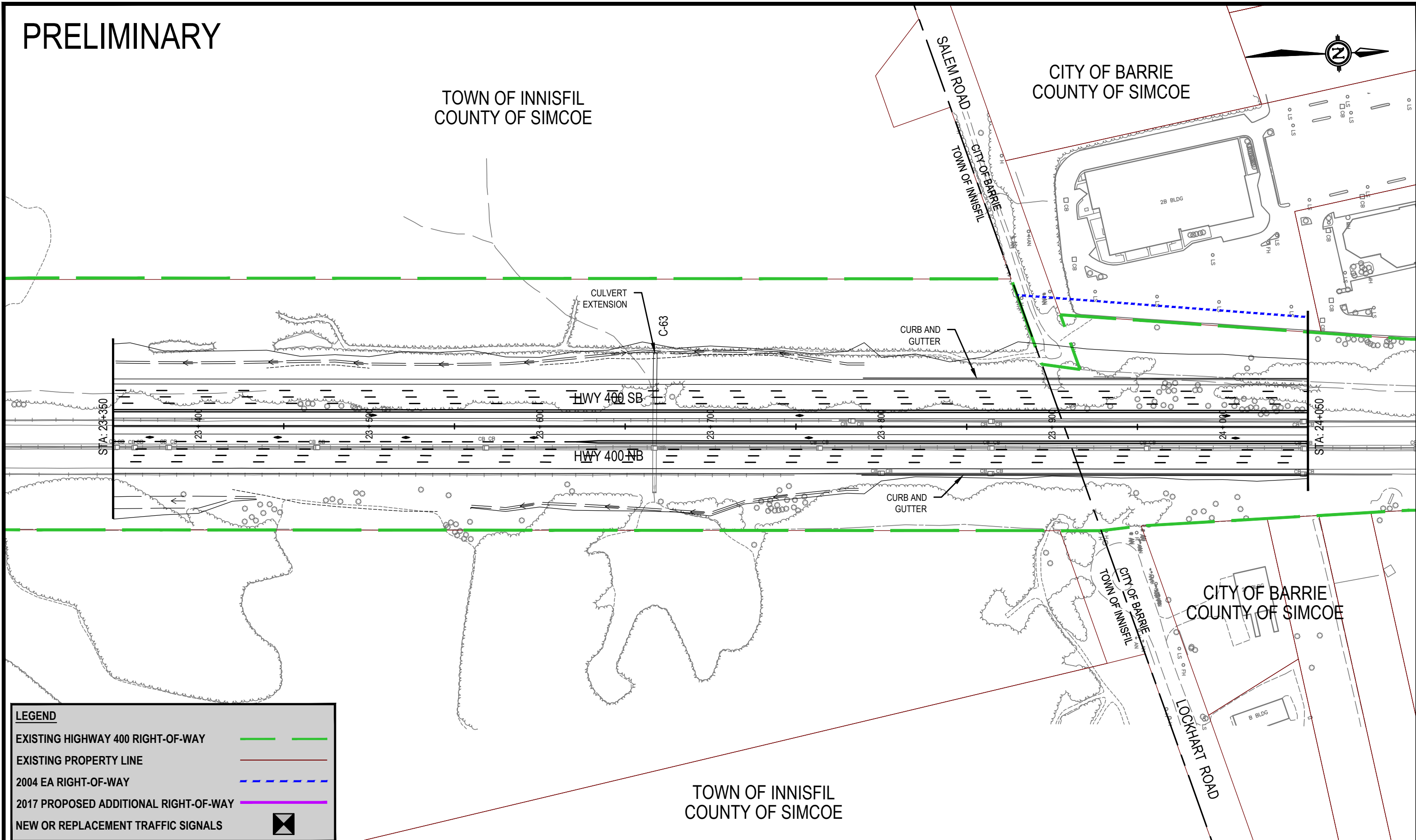


PLATE
23

PRELIMINARY

TOWN OF INNISFIL
COUNTY OF SIMCOE

CITY OF BARRIE
COUNTY OF SIMCOE



LEGEND

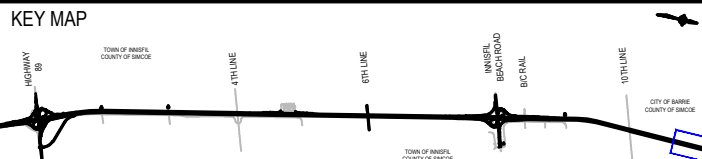
- EXISTING HIGHWAY 400 RIGHT-OF-WAY — — — — —
- EXISTING PROPERTY LINE — — — — —
- 2004 EA RIGHT-OF-WAY - - - - -
- 2017 PROPOSED ADDITIONAL RIGHT-OF-WAY — — — — —
- NEW OR REPLACEMENT TRAFFIC SIGNALS

TOWN OF INNISFIL
COUNTY OF SIMCOE

CITY OF BARRIE
COUNTY OF SIMCOE



HIGHWAY 400
HIGHWAY 89 TO JUNCTION AT HIGHWAY 11
W.O. 06-20016



HIGHWAY 400
RECOMMENDED PLAN
STATION 23+350 TO STATION 24+050

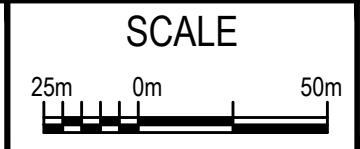


PLATE
24