

CITY HALL
70 COLLIER STREET
TEL. (705) 726-4242
FAX. (705) 739-4247



P.O. BOX 400
BARRIE, ONTARIO
L4M 4T5

THE CORPORATION OF THE CITY OF BARRIE
Engineering Department
"Committed to Total Service Excellence"

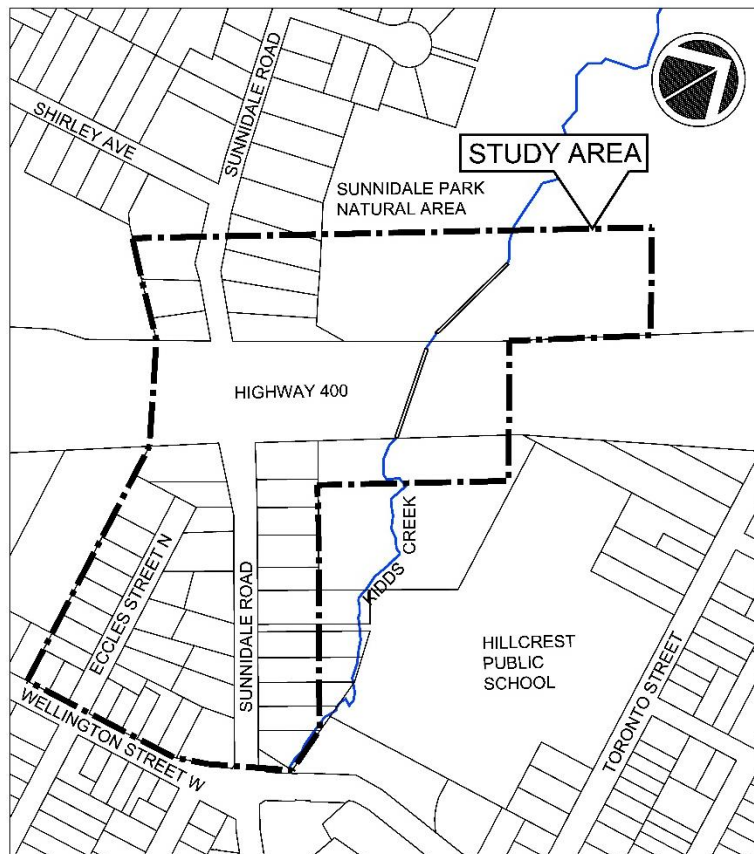
May 17, 2019

File: E01-SU

To: All Area Residents / Business Owners / Tenants / Agencies:

Re: **Sunnidale Road Sanitary Sewer Relocation**
Municipal Class Environmental Assessment Phases 1 & 2
Public Comments Invited

The City of Barrie (City) is undertaking a study to determine the preferred alignment to relocate the existing sanitary sewer off of the Sunnidale Road Bridge as requested by the Ministry of Transportation. The Study Area is identified in the figure below:



Project Scope

This project is being planned under Schedule B of the Municipal Class Environmental Assessment (Class EA) to study alternative alignments and assess the relative environmental, social, economic and cultural impacts.

Preliminary Study Results

A comprehensive list of alternative alignments has been developed and evaluated. The preliminary preferred alignment is Alternative 3E (see attached drawing). The project plans and project file are available on the City of Barrie website at barrie.ca → City Hall → Environmental Assessment Studies → Sunnidale Road Sanitary Sewer Relocation.

Public, First Nations and Agency Comments Invited

Input and comments are invited, for incorporation into the planning and design of this project (see attached comment sheet) and will be received until June 14, 2019. Subject to comments received and the receipt of necessary approvals, the City intends to proceed with the design and construction of this project.

If you have any questions and / or concerns, please feel free to contact the undersigned at (705) 739-4220, extension 5117, or e-mail Brett.Gratrix@barrie.ca.

Yours truly,

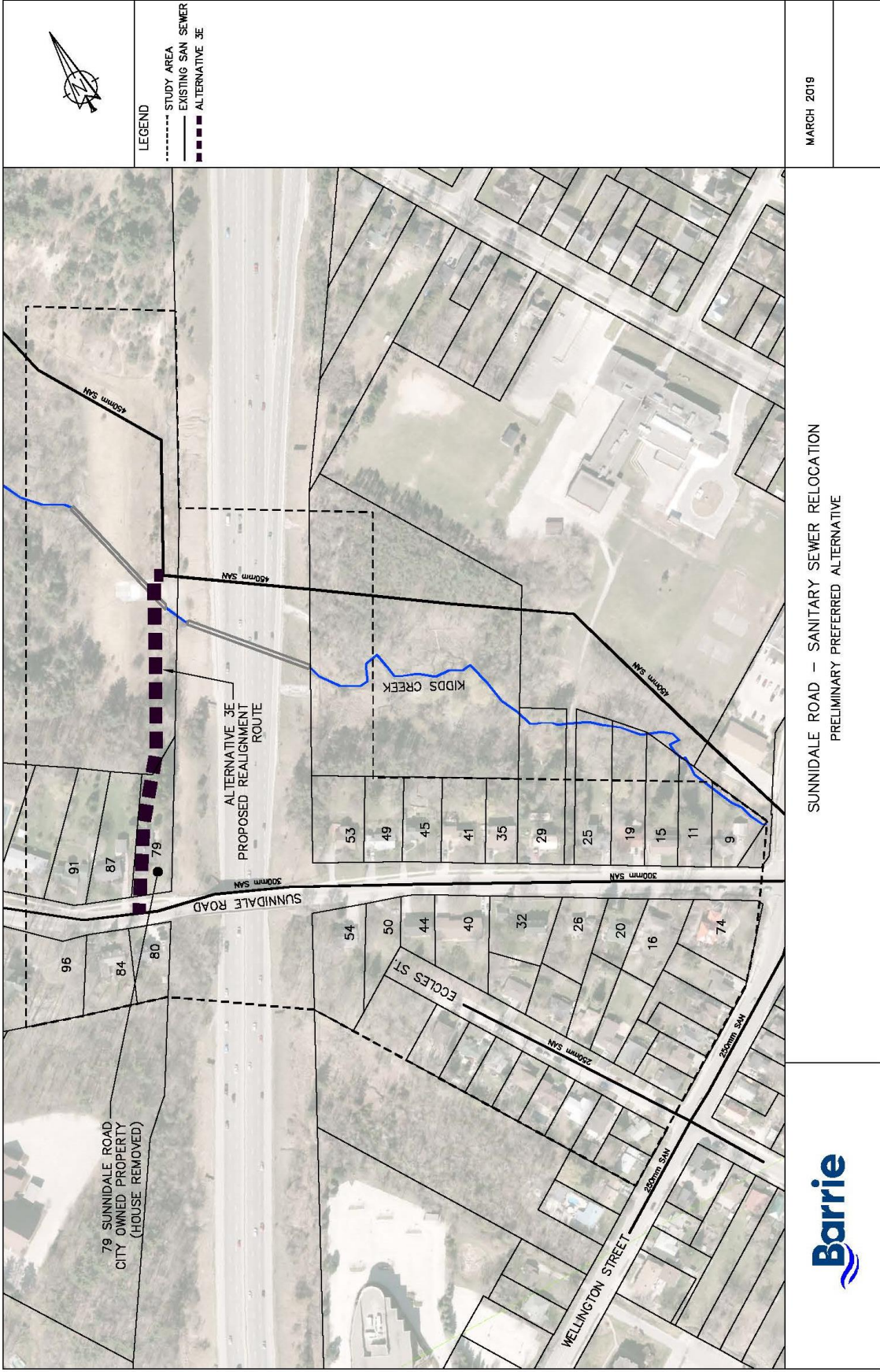


Brett Gratrix, P. Eng.
Infrastructure Planning Engineer

BG/sm

Attachments

p



LEGEND

- STUDY AREA
- EXISTING SAN SEWER
- ALTERNATIVE 3E



MARCH 2019

SUNNIDALE ROAD – SANITARY SEWER RELOCATION
 PRELIMINARY PREFERRED ALTERNATIVE

