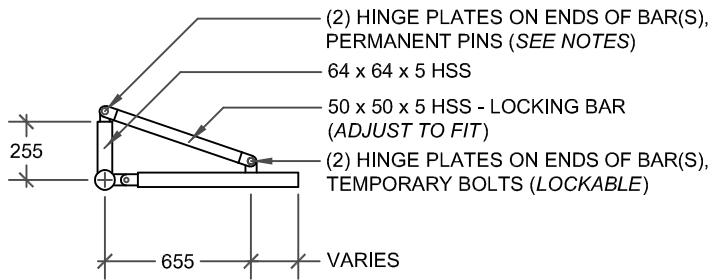
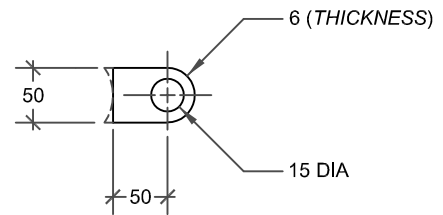


HINGE PLATE
(SEE DETAIL THIS PAGE)
APPLY PRISMATIC REFLECTIVE
MARKING TAPE TO BOTH SIDES
OF GATE
64 x 64 x 5 HSS
TERMINAL POST - 89mm DIA
WITH CAP

COMPACTED SELECT
SUBGRADE
(95% S.P.M.D.D.) OR
UNDISTURBED SOIL
ALL CONCRETE FOOTINGS ARE
TO BE 20MPa AFTER 28 DAYS



SECTION A-A



HINGE PLATE DETAIL

1. TERMINAL POSTS ARE TO BE SCHEDULE 40.
2. WELDING SHALL CONFORM TO C.S.A. SPECIFICATION W59.
3. HINGE PINS 15mmØ GALVANIZED BOLTS WITH LOCK NUTS WELDED.
4. GATES TO BE PRE-MANUFACTURED AND HOT DIPPED GALVANIZED.
5. ALL DIMENSIONS ARE IN MILLIMETRES UNLESS OTHERWISE SHOWN.
6. SPACING BETWEEN GATES IS FIXED AT 1000mm.
7. FOR INSTALLATION PURPOSES THE LOCKABLE HINGE PLATES SHALL BE SECURED WITH 15mmØ GALVANIZED BOLTS AND LOCK NUTS.
8. ALL ENDS SHALL BE CLOSED WITH NO VISIBLE OPENINGS.
9. ANY OPENINGS FROM THE GALVANIZATION PROCESS SHALL BE FILLED TO PREVENT HORNET AND WASP NESTING OPPORTUNITIES.
10. THIS DETAIL TO BE USED IN CONJUNCTION WITH P1209 AND P1215.



GATE VEHICULAR CONTROL

REV No. 2 DATE: APR 2023
SCALE: N.T.S.

P1216