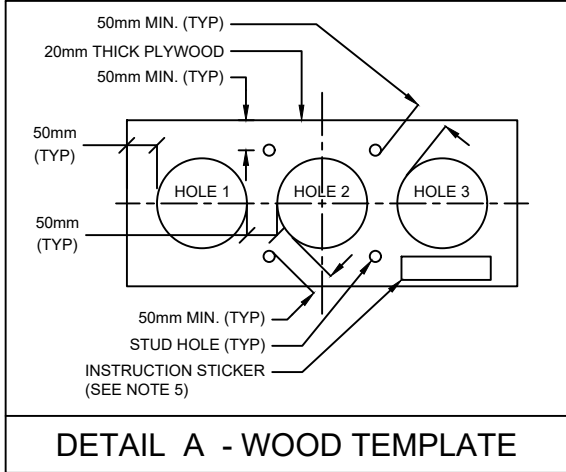


ASSEMBLY DIMENSIONS			
BOLT CIRCLE DIA. (mm) 'A'	BOLT DISTANCE (mm) 'B'	ANCHORAGE DEPTH (mm) 'C'	BOLT DIA. (mm)
242	171	457	22
406	287	457	32



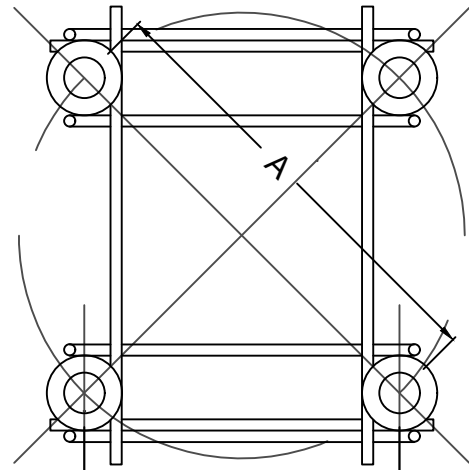
DETAIL A - WOOD TEMPLATE

INSTRUCTIONS:

- DO NOT REMOVE STUDS FROM THREADED FERRULES.
- PLACE ANCHORAGE IN FOOTING WITH WOOD TEMPLATE OVER FORMWORK.
- TIE ANCHORAGE TO STEEL IN FOOTING.
- TIE ANCHORAGE TO DUCTS.
- ADJUST FOR LEVEL USING A CARPENTER'S LEVEL SEVERAL WAYS ON THE TEMPLATE.
- SECURE IN THE LEVEL POSITION PRIOR TO POURING CONCRETE TO THE TOP OF THE FORMWORK.
- REMOVE WOOD TEMPLATE AND FINISH CONCRETE ON TOP OF FOOTING AS SOON AS CONCRETE HAS AN INITIAL SET. REPLACE TEMPLATE AND PLACE BOLTS FULLY TO THREADED FERRULES (HAND TIGHT).

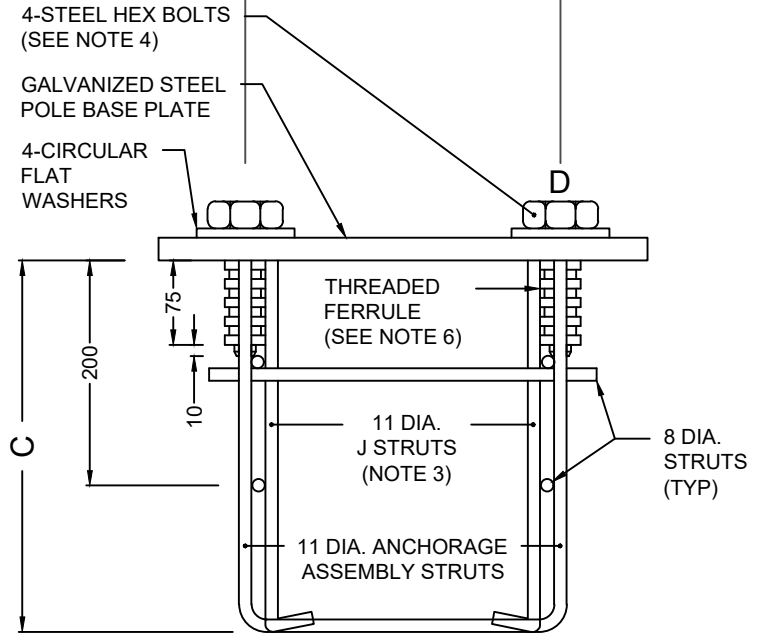
NOTES:

- ALL DIMENSIONS ARE IN MILLIMETERS UNLESS OTHERWISE SHOWN.
- FOR CONCRETE FOOTING DETAILS, SEE R347.
- J STRUTS NOT REQUIRED IN ASSEMBLY WITH BOLT CIRCLE DIAMETER LESS THAN 406mm.
- BOLTS SHALL BE FACTORY SET IN FERRULE, HAND TIGHTENED WITH ANTI-SEIZE COMPOUND.
- PLYWOOD TEMPLATE WITH INSTRUCTION STICKER TO BE PROVIDED FOR ACCURATE SETTING OF THE ANCHORAGE ASSEMBLY.
- PLUG HOLES IN FERRULE TO KEEP THREADS CLEAN FROM CONCRETE.



PLAN

AN ANTI-SEIZE COMPOUND SHALL BE APPLIED TO ALL BOLTS



ELEVATION



ANCHORAGE ASSEMBLY

REV No.	DATE: APR 2023
3	SCALE: N.T.S.

R346