

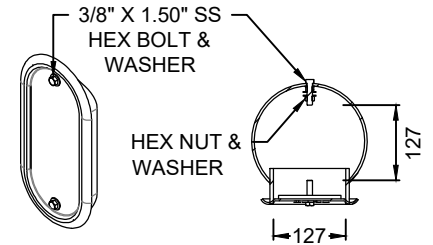
HANDHOLE RING
DETAIL 'A'

BASE PLATE & SHROUD
DETAIL 'C'

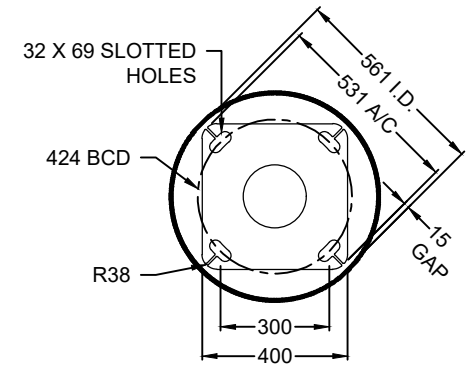
POLE SPECIFICATIONS:

SECTION:
COLOUR:
FINISH:

**ROUND
RAL BLACK 2100 SABLE
MATTE**



HANDHOLE COVER & ELEVATION
DETAIL 'B'



BASE PLATE & SHROUD ELEVATION
DETAIL 'D'

NOTES:

- ALL DIMENSIONS ARE IN MILLIMETERS UNLESS OTHERWISE SHOWN.
- POLES SHALL BE PLACED SO THAT HANDHOLES ARE FACING AWAY FROM ROADWAY.
- HANDHOLE WIRING CONNECTIONS TO LUMINAIRE SHALL BE AS PER OPSD 2255.020.
- ALL WIRING APERTURES TO BE DE-BURRED & PROTECTED WITH GREY ZINC RICH PAINT.
- FOR ORIENTATION AND LOCATION OF POLES AND EQUIPMENT SEE LAYOUT DRAWINGS.
- FOR ANCHORAGE ASSEMBLY DETAILS, SEE R346.
- FOR POLE MOUNTING AND CONCRETE FOOTING DETAILS, SEE R347.
- POLES SHALL BE DESIGN TO MEET CSA S6-14, WIND PRESSURE OF 535 PA.
- MANUFACTURER TO CERTIFY MAX EPA (M²) AT POLE TOP.
- ALL STEEL SHALL COMPLY WITH CSA G40.21 (GRADE 350W; BASE PLATES GRADE 300W).
- ALL WELDING PER CSA W59.1 BY CWB-CERTIFIED FABRICATOR (CSA W47.1).
- POLES SHALL BE HOT-DIP GALVANIZED IN ACCORDANCE WITH ASTM A123 / CSA G164.
- POWDER COAT FINISH SHALL COMPLY WITH AAMA 2604 FOR WEATHER, UV, AND COLOR RETENTION PERFORMANCE, MIN 60 μ M THICKNESS, WITH ADHESION PER ASTM B449.



ROUND STEEL DECORATIVE POLE BASE MOUNTED

REV No. 1
DATE: SEP 2025
SCALE: N.T.S.

R371