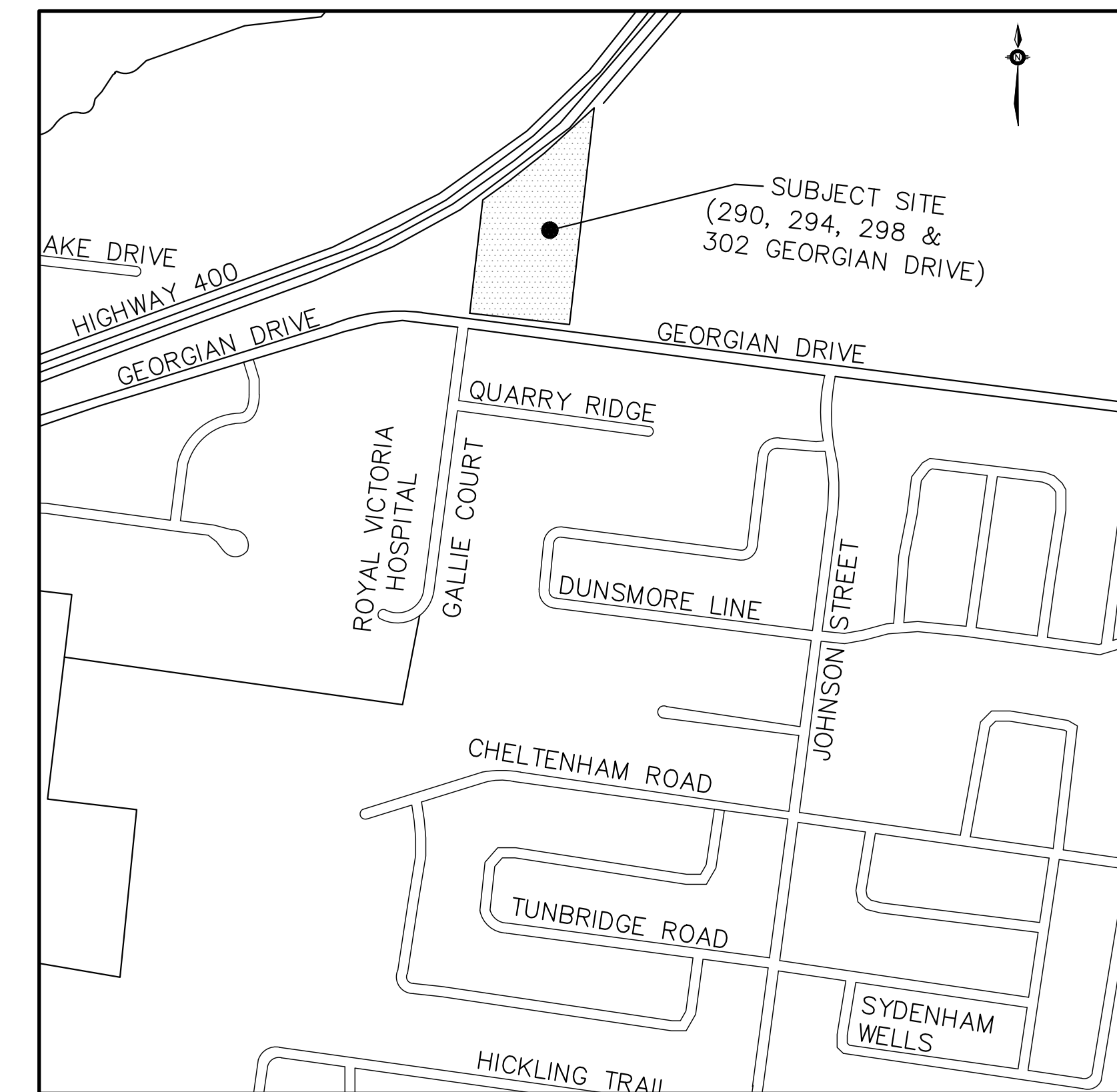


THE GEORGIAN APARTMENTS 290, 294, 298, & 302 GEORGIAN DRIVE

DRAWING LIST:

ND-1	NOTES AND DETAILS
SG-1	SITE GRADING PLAN
SS-1	SITE SERVICING PLAN
STM-1	PRE-DEVELOPMENT CATCHMENT PLAN
STM-2	POST-DEVELOPMENT CATCHMENT PLAN
EPR-1	EROSION PROTECTION AND REMOVALS PLAN

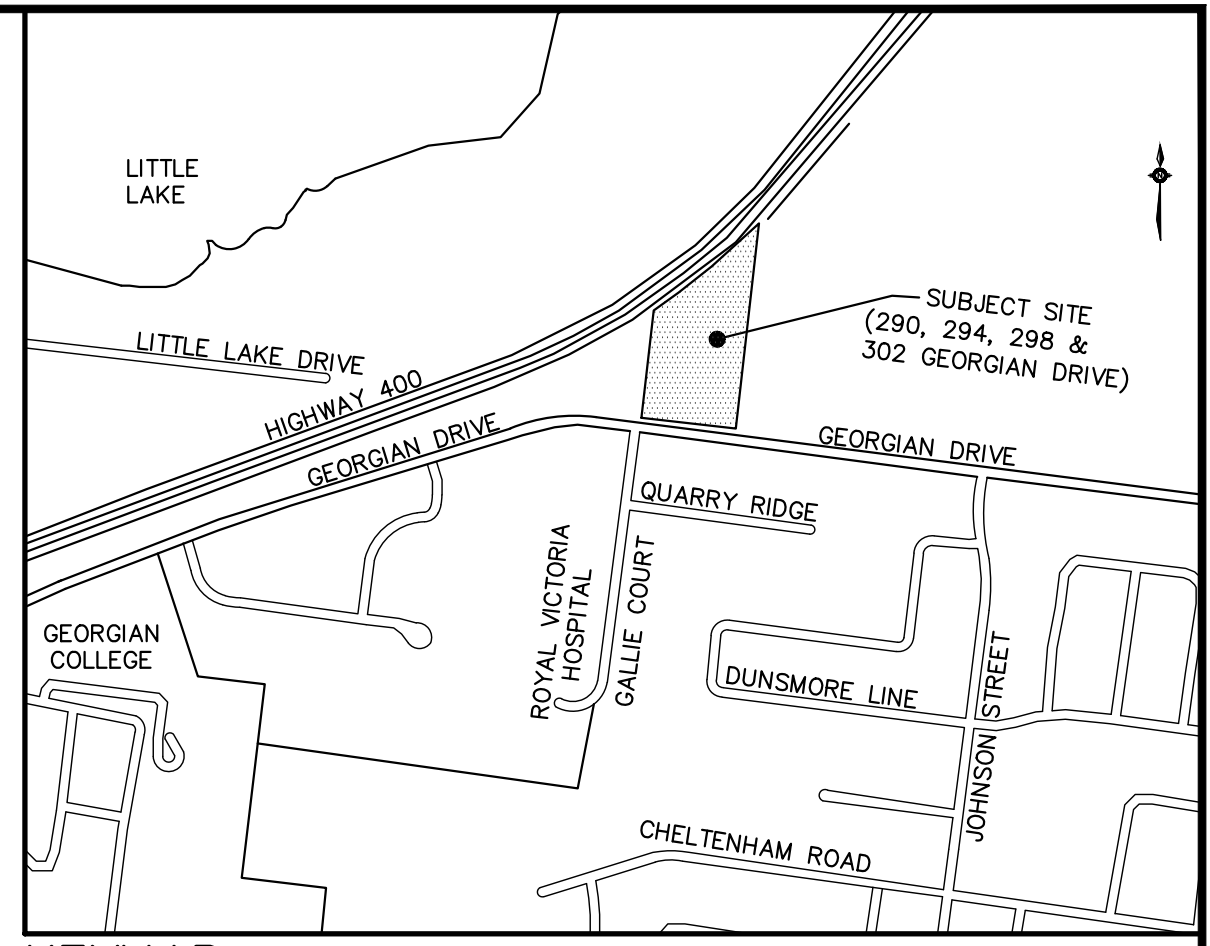
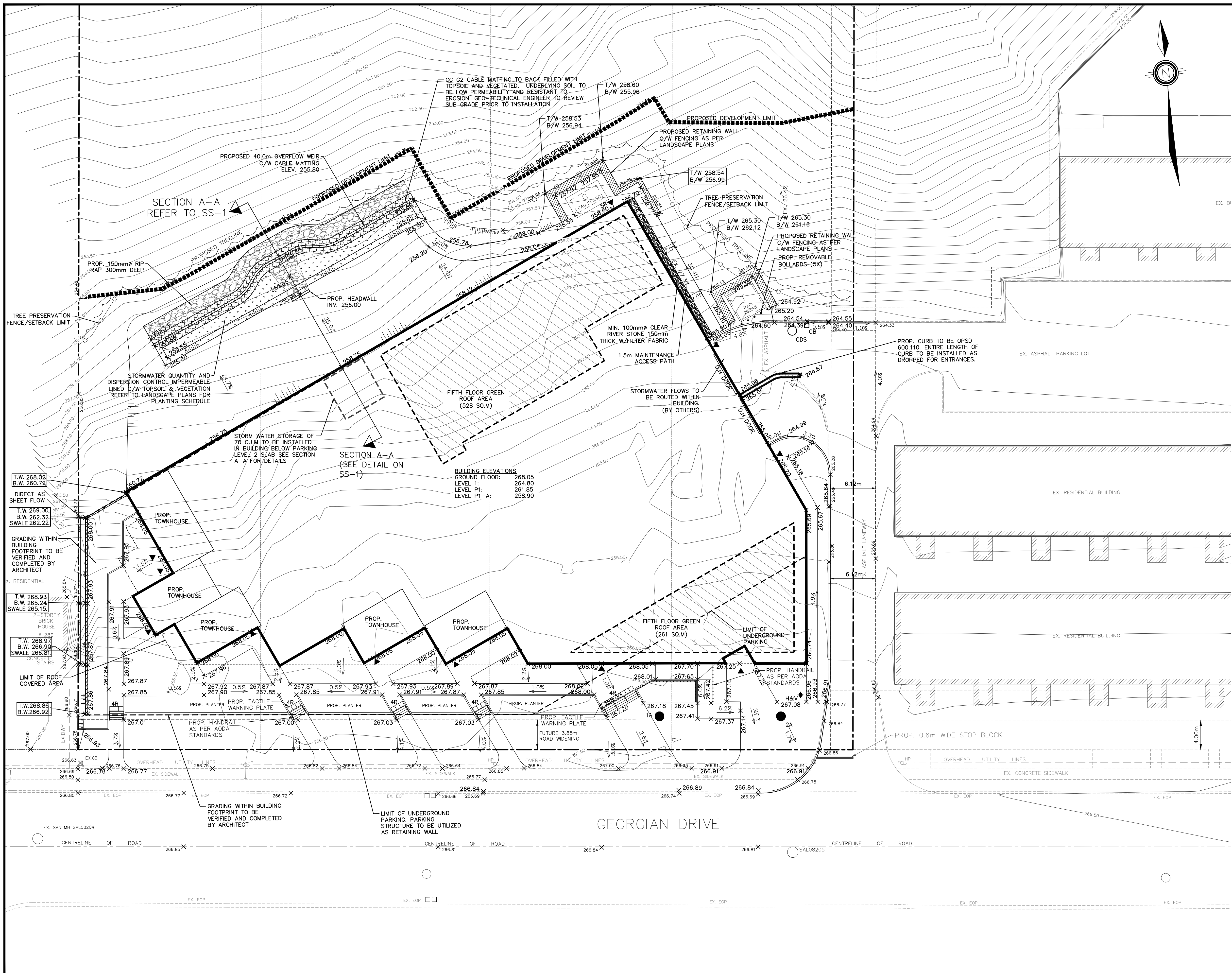


CITY OF BARRIE
70 COLLIER ST.
BARRIE, ON
L4M 4T5

ATRIA DEVELOPMENT
6 CARLAW AVE. SUITE 200
TORONTO, ON
M4M 2R5



PEARSON
ENGINEERING
PEARSONENG.COM PH. 705.719.4785



LEGEND

- SAN MAINTENANCE HOLE
- CATCH BASIN
- ▣ DOUBLE CATCH BASIN
- ⊕ DOUBLE CATCH BASIN MAINTENANCE HOLE
- ⊙ CATCH BASIN MAINTENANCE HOLE
- STORM MAINTENANCE HOLE
- x 386.96 PROPOSED ELEVATION
- o 386.96 EXISTING ELEVATION
- PROPOSED GRADE
- SERVICE CAP
- ◆ FIRE HYDRANT
- ⊕ WATER VALVE
- ⊙ CURB STOP
- H.P. HYDRO POLE
- ▣ BELL PEDESTAL
- ▣ HYDRO TRANSFORMER
- ⊙ LIGHT STANDARD
- ⊙ WATER METER
- BARRIER CURB
- GENERATOR PAD
- TRANSFORMER PAD
- PROP. DEVELOPMENT LIMIT

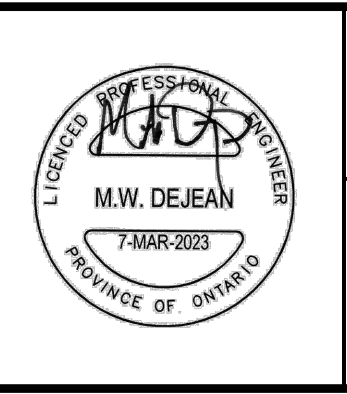
P:\AutoCAD\Working\Folders\18037--BASE_REV1.dwg Layout:SG-1 Plotted: May 07, 2023 @ 1:32pm by emalkase @ PEARSON ENGINEERING LTD.

SITE BENCHMARK:
 LOCATED AT TOP OF HYDRANT SPINDLE ON THE SOUTH SIDE OF GEORGIAN DRIVE, SOUTH EAST OF SITE.
 ELEV. 267.46m

SURVEY:
 TOPOGRAPHIC SURVEY COMPLETED BY RUDY MAK SURVEYING LTD. AND ISSUED ON AUGUST 1, 2014.

NO.	REVISION NOTE	DATE	BY
8.	REVISED AS PER CITY OF BARRIE COMMENTS	03/07/23	JPE
7.	REVISED AS PER CITY OF BARRIE COMMENTS	01/26/23	PCO
6.	REVISED AS PER CITY OF BARRIE COMMENTS	09/13/22	JPE
5.	REVISED AS PER CITY OF BARRIE COMMENTS	03/07/22	MJWP
4.	REVISED AS PER CITY OF BARRIE COMMENTS	09/08/21	JPE

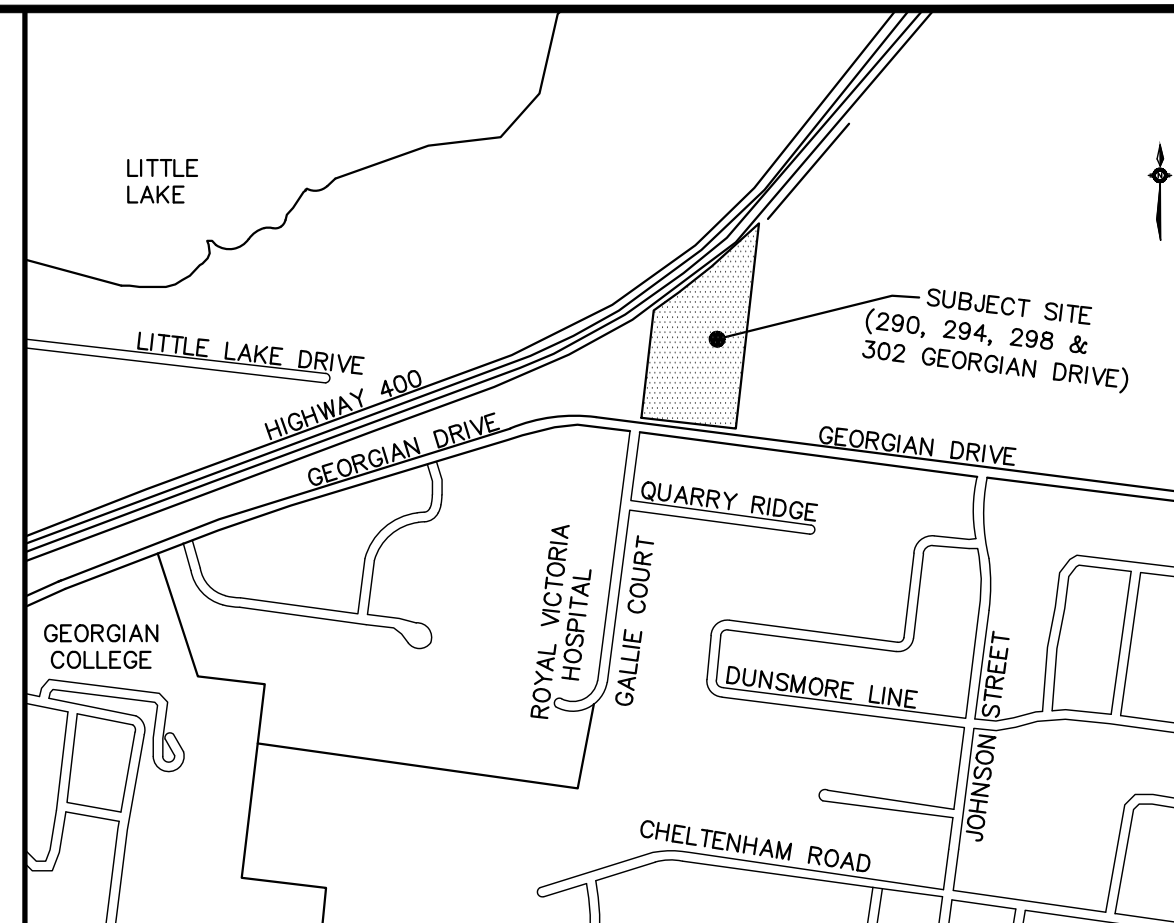
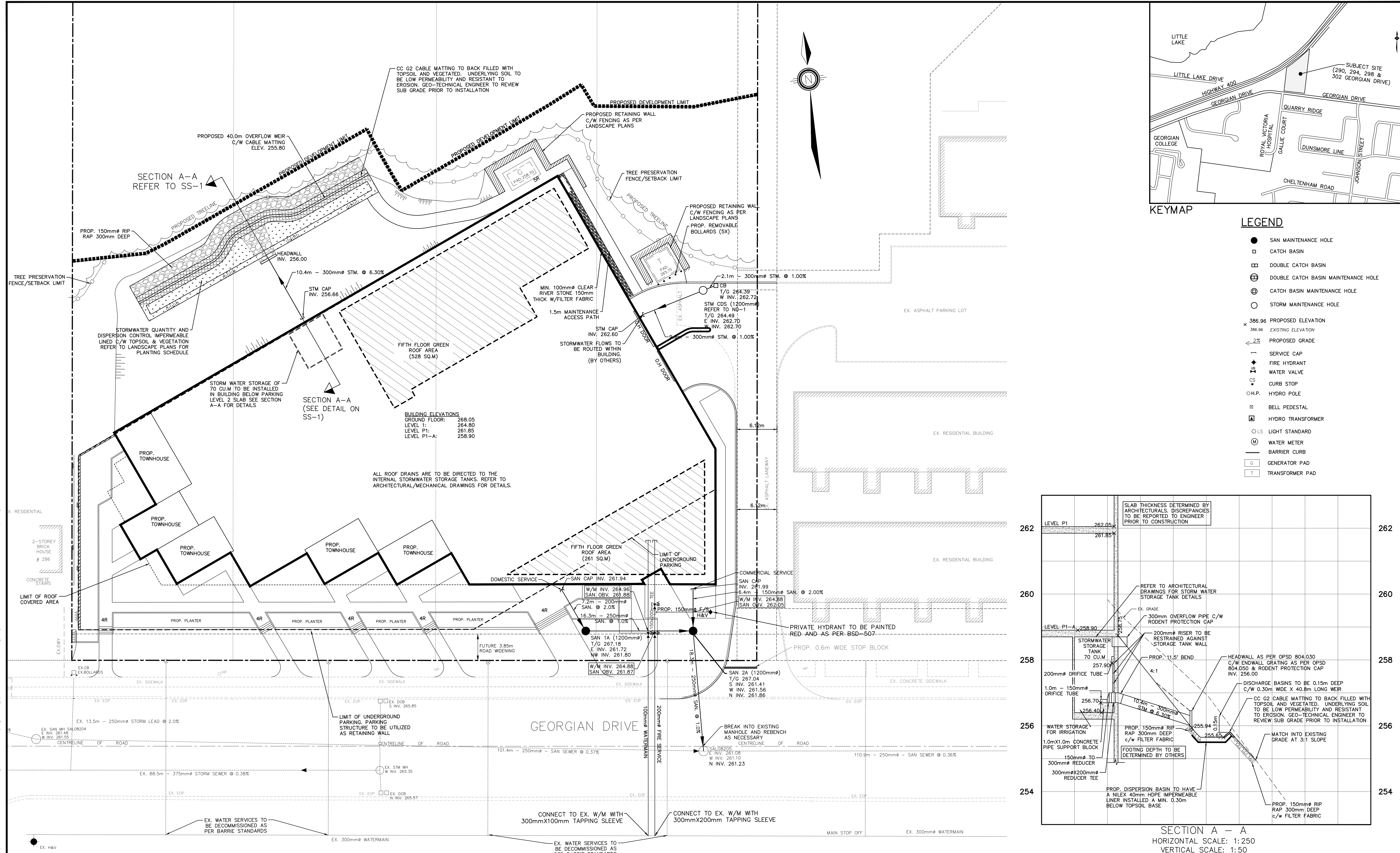
CONTROL MONUMENTS:
HORIZONTAL:
 00119713803 - SOUTHWEST CORNER OF GEORGIAN DR & PENETANGUISHENE RD. EASTING 607787.028 NORTHING 4918904.790
 00119713804 - SOUTH SIDE OF GEORGIAN DR. ~110m WEST OF LARKIN DR. EASTING 607477.286 NORTHING 4918937.253
VERTICAL:
 03120030002 - CAP - EASTING 606202 NORTHING 4918802
 RVH HELIPORT AT WEST ENTRANCE. ELEV: 260.583
 00820038068 - CAP - EASTING 606084, NORTHING 4918831
 N.SIDE OF GEORGIAN DR. ~105m EAST OF GOVERNORS DR. ELEV: 258.425



THE GEORGIAN APARTMENTS
 290,294,298,&302 GEORGIAN DRIVE
 BARRIE, ONTARIO

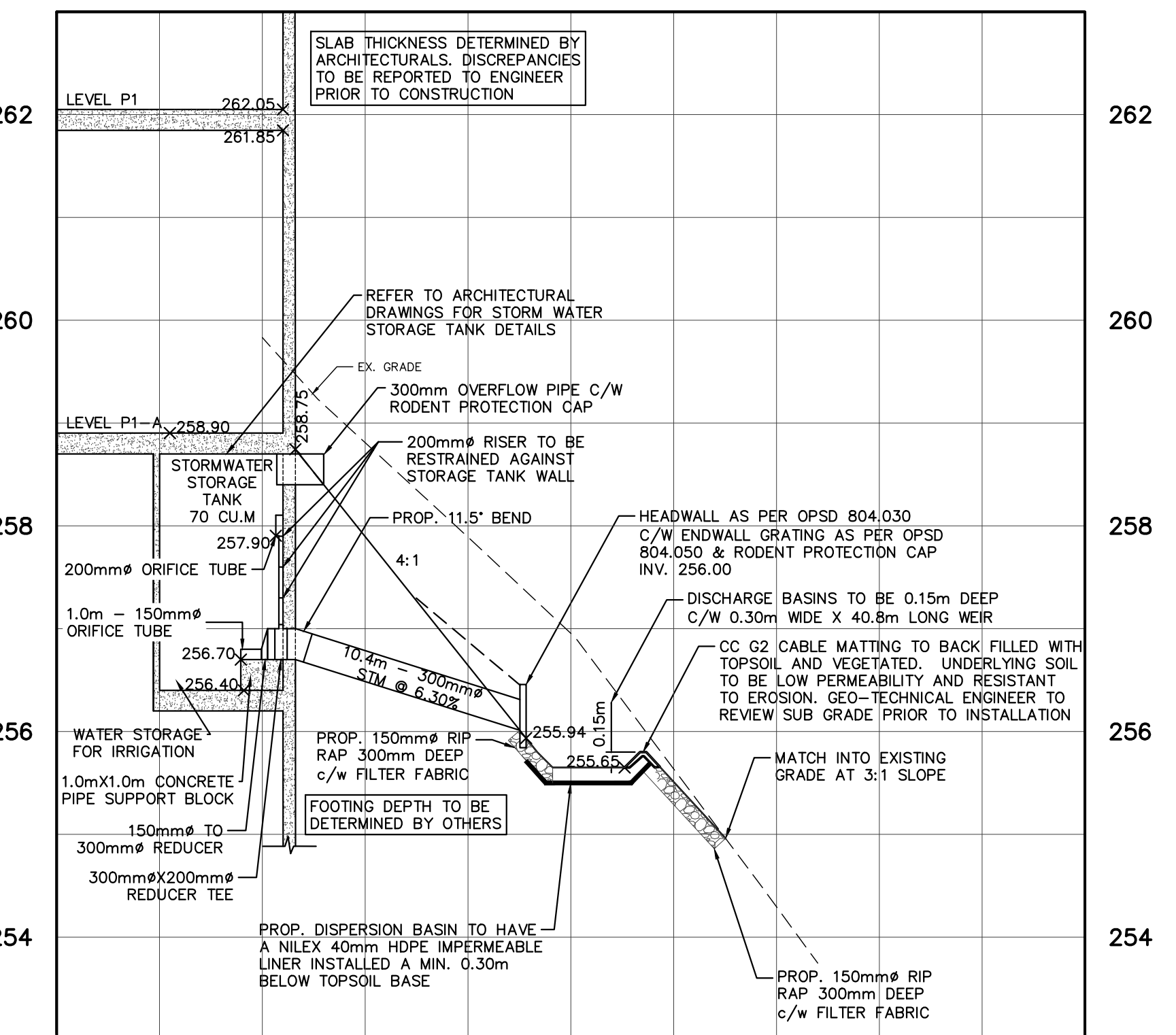
SITE GRADING PLAN

DESIGNED BY	PCO	HORIZ SCALE	1:250	PROJECT #	18037
DRAWN BY	MKRW	VERT SCALE		DRAWING #	SG-1
CHECKED BY	GMP	DATE	SEPTEMBER 2018	REVISION #	8



LEGEND

- SAN MAINTENANCE HOLE
- CATCH BASIN
- ▣ DOUBLE CATCH BASIN
- ⊕ DOUBLE CATCH BASIN MAINTENANCE HOLE
- ⊙ CATCH BASIN MAINTENANCE HOLE
- STORM MAINTENANCE HOLE
- x 386.96 PROPOSED ELEVATION
- 386.96 EXISTING ELEVATION
- 2% PROPOSED GRADE
- SERVICE CAP
- FIRE HYDRANT
- WATER VALVE
- CURB STOP
- O.H.P.
- BELL PEDESTAL
- HYDRO TRANSFORMER
- LIGHT STANDARD
- WATER METER
- BARRIER CURB
- GENERATOR PAD
- TRANSFORMER PAD

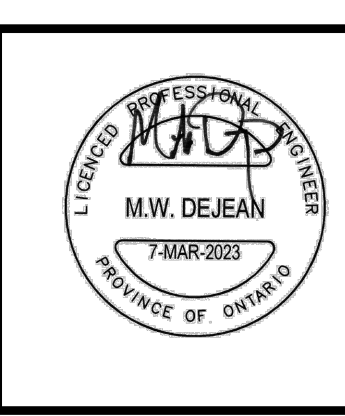


SITE BENCHMARK:
 LOCATED AT TOP OF HYDRANT SPINDLE ON THE SOUTH SIDE OF GEORGIAN DRIVE, SOUTH EAST OF SITE.
 ELEV. 267.46m

SURVEY:
 TOPOGRAPHIC SURVEY COMPLETED BY RUDY MAK SURVEYING LTD. AND ISSUED ON AUGUST 1, 2014.

NO.	REVISION NOTE	DATE	BY
8.	REVISED AS PER CITY OF BARRIE COMMENTS	03/07/23	JPE
7.	REVISED AS PER CITY OF BARRIE COMMENTS	01/26/23	PCO
6.	REVISED AS PER CITY OF BARRIE COMMENTS	09/13/22	JPE
5.	REVISED AS PER CITY OF BARRIE COMMENTS	03/07/22	MJWP
4.	REVISED AS PER CITY OF BARRIE COMMENTS	09/08/21	JPE
NO.	REVISION NOTE	DATE	BY

CONTROL MONUMENTS:
HORIZONTAL
 00119713803 - SOUTHWEST CORNER OF GEORGIAN DR & PENETANGUISHENE DR. EASTING 607787.028 NORTHING 4918904.790
 00119713804 - SOUTH SIDE OF GEORGIAN DR. ~110m WEST OF LARKIN DR. EASTING 607477.286 NORTHING 4918937.253
VERTICAL
 03120030002 - CAP - EASTING 606202 NORTHING 4918802 ELEV: 260.583
 RVH HELIPOINT AT WEST ENTRANCE. ELEV: 260.583
 00820038068 - CAP - EASTING 606084, NORTHING 4918831 ELEV: 258.425
 N.SIDE OF GEORGIAN DR. ~105m EAST OF GOVERNORS DR. ELEV: 258.425



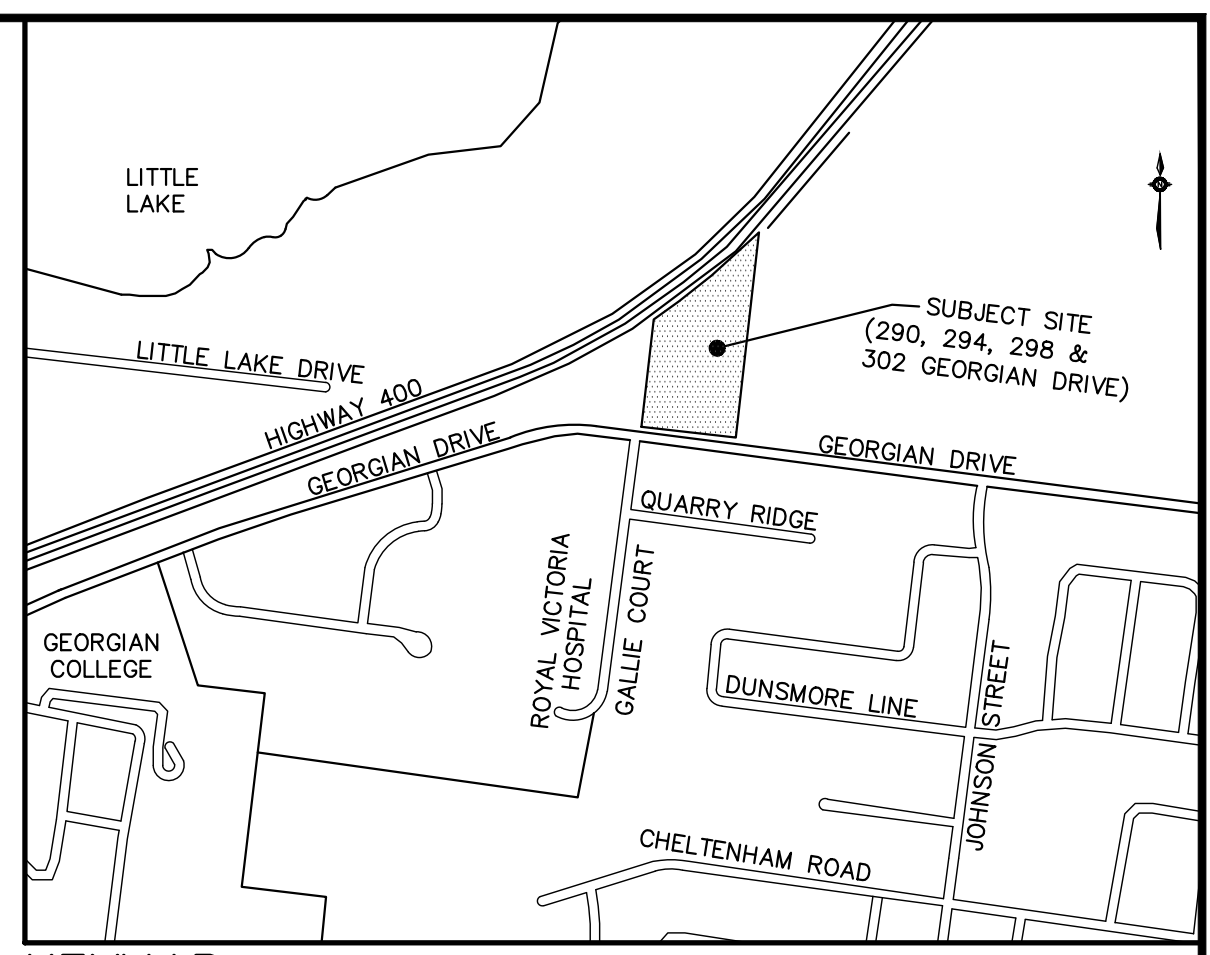
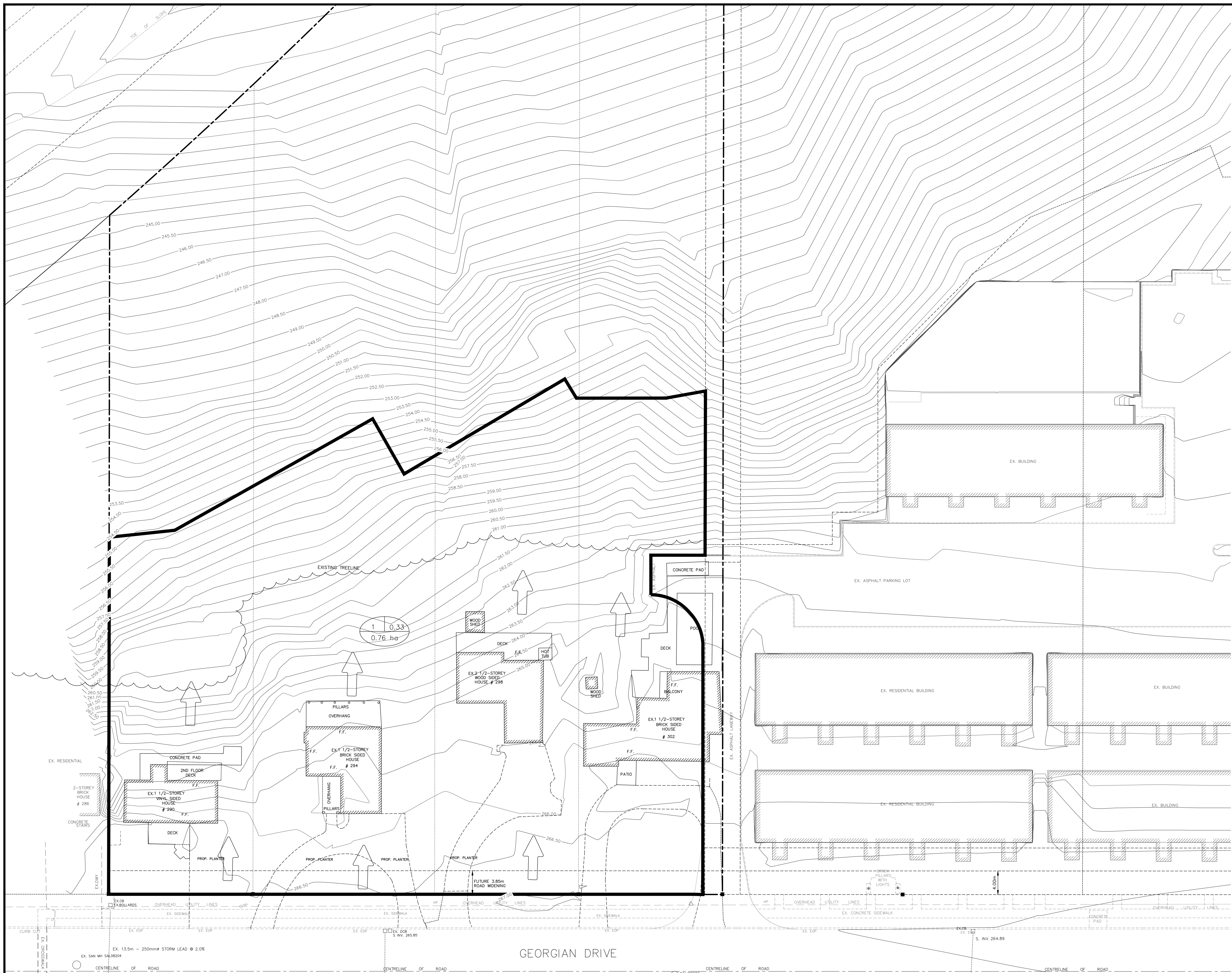
THE GEORGIAN APARTMENTS
 290,294,298,&302 GEORGIAN DRIVE
 BARRIE, ONTARIO

SITE SERVICING PLAN

DESIGNED BY	PCO	HORIZ SCALE	1:250	PROJECT #	18037
DRAWN BY	MJWP	VERT SCALE		DRAWING #	SS-1
CHECKED BY	GMP	DATE	SEPTEMBER 2018	REVISION #	8



P:\AutoCAD\Working\Folders\18037 - TMD, 290-302 Georgian Dr., Barrie\Engineering\18037-BASE_VIEW.dwg Layout:SS-1 Plotted Mar 07, 2023 @ 1:32pm by emakcse @ PEARSON ENGINEERING LTD.



KEYMAP

LEGEND

- SAN MAINTENANCE HOLE
 - CATCH BASIN
 - ▣ DOUBLE CATCH BASIN
 - ⊕ DOUBLE CATCH BASIN MAINTENANCE HOLE
 - ⊙ CATCH BASIN MAINTENANCE HOLE
 - STORM MAINTENANCE HOLE
 - x 386.96 PROPOSED ELEVATION
 - 386.96 EXISTING ELEVATION
 - ← 2% PROPOSED GRADE
 - SERVICE CAP
 - ◆ FIRE HYDRANT
 - ⊕ WATER VALVE
 - CS CURB STOP
 - H.P. HYDRO POLE
 - ⊕ BELL PEDESTAL
 - ⊕ HYDRO TRANSFORMER
 - ⊕ LIGHT STANDARD
 - ⊕ WATER METER
 - BARRIER CURB
 - ➔ OVERLAND FLOW DIRECTION
- CATCHMENT AREA RUNOFF COEFFICIENT
- 1 0.33
- 0.76 ha
- AREA
- CATCHMENT BOUNDARY

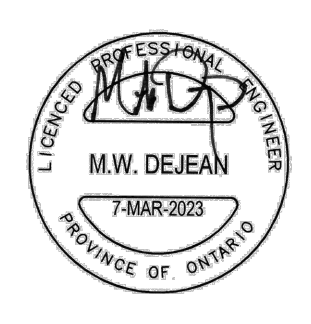
P:\AutoCAD\Working\Folders\18037 - TMD, 290-302 Georgian Dr., Barrie\Engineering\18037-BASE_REV1.dwg Layout:STM-1 Plotted Mar 07, 2023 @ 1:32pm by emalkoske @ PEARSON ENGINEERING LTD.

SITE BENCHMARK:
 LOCATED AT TOP OF HYDRANT SPINDLE ON THE SOUTH SIDE OF
 GEORGIAN DRIVE, ACROSS FROM SITE.
 ELEV. 267.46m

SURVEY:
 TOPOGRAPHIC SURVEY COMPLETED BY RUDY MAK SURVEYING LTD.
 AND ISSUED ON AUGUST 1, 2014.

NO.	REVISION NOTE	DATE	BY
8.	REVISED AS PER CITY OF BARRIE COMMENTS	03/07/23	JPE
7.	REVISED AS PER CITY OF BARRIE COMMENTS	01/26/23	PCO
6.	REVISED AS PER CITY OF BARRIE COMMENTS	09/13/22	JPE
5.	REVISED AS PER CITY OF BARRIE COMMENTS	03/07/22	MJWP
4.	REVISED AS PER CITY OF BARRIE COMMENTS	09/08/21	JPE

CONTROL MONUMENTS:
HORIZONTAL
 00119713803 - SOUTHWEST CORNER OF GEORGIAN DR & PENETANGUISHENE RD.
 EASTING 607787.028 NORTHING 4918904.790
 00119713804 - SOUTH SIDE OF GEORGIAN DR. ~110m WEST OF LARKIN DR.
 EASTING 607477.286 NORTHING 4918937.253
VERTICAL
 03120030002 - CAP - EASTING 606202 NORTHING 4918802 ELEV: 260.583
 RVH HELIPORT AT WEST ENTRANCE. ELEV: 260.583
 00820038068 - CAP - EASTING 606084, NORTHING 4918831 ELEV: 258.425
 N. SIDE OF GEORGIAN DR. ~105m EAST OF GOVERNORS DR. ELEV: 258.425

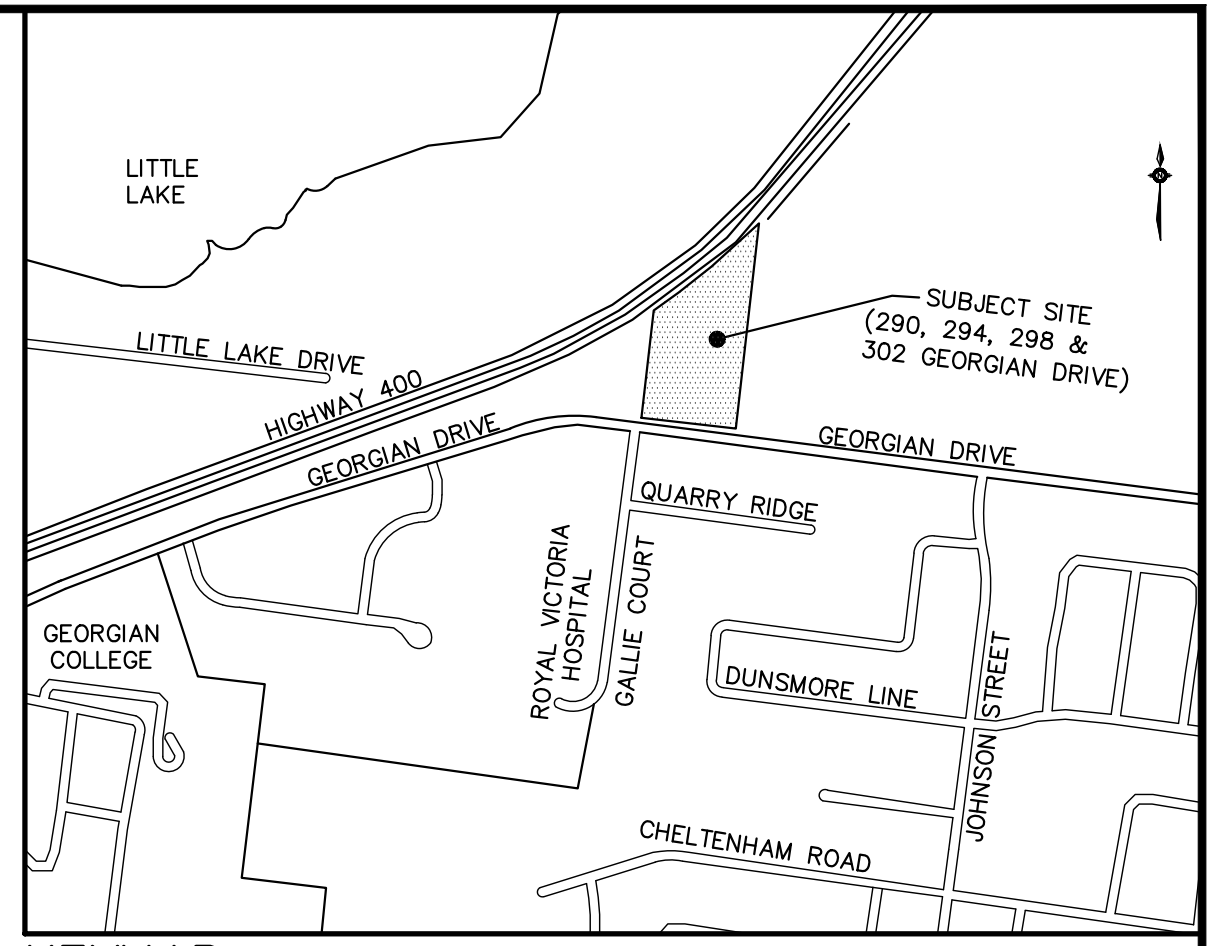
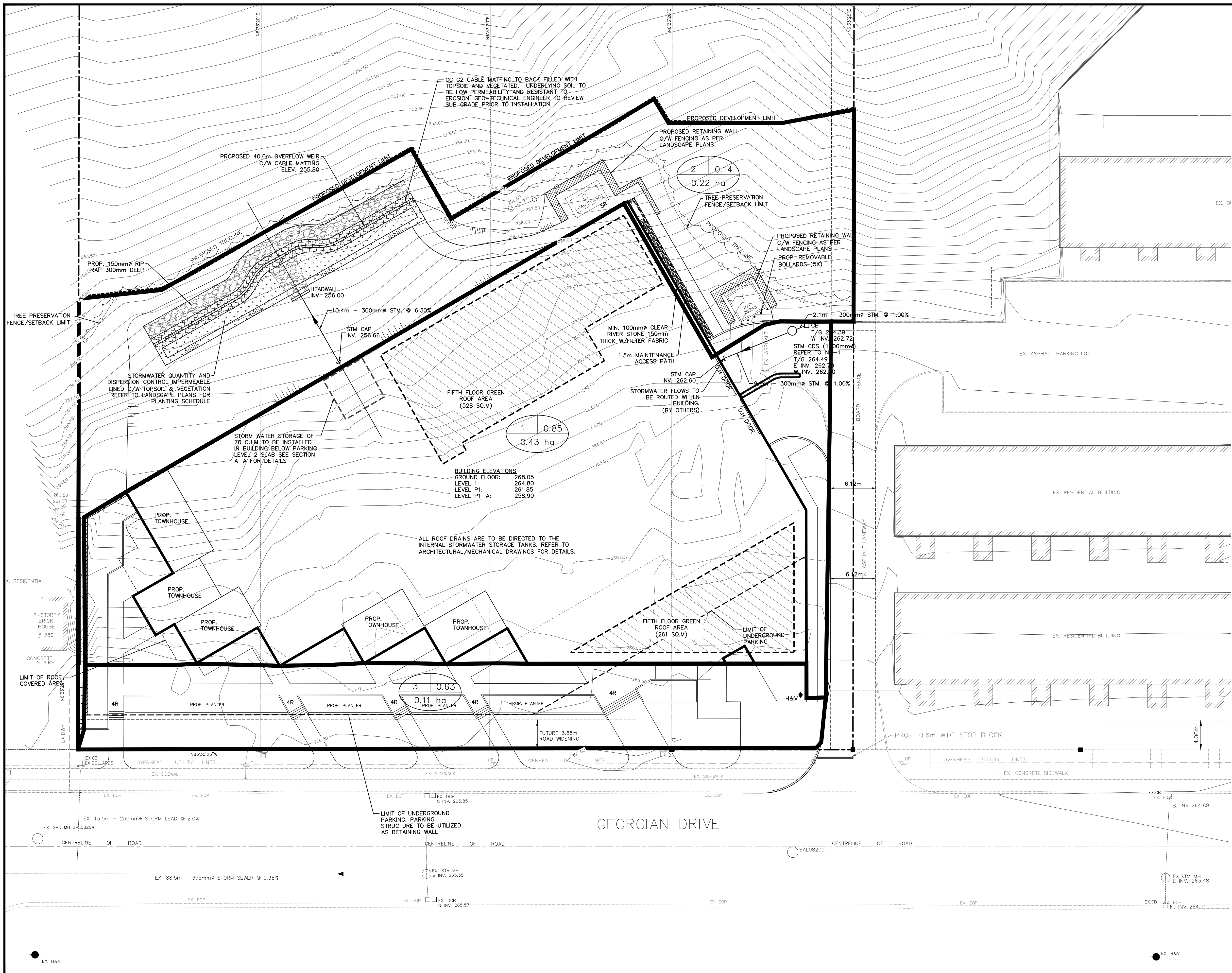


THE GEORGIAN APARTMENTS
 290,294,298,&302 GEORGIAN DRIVE
 BARRIE, ONTARIO

PRE-DEVELOPMENT STORM DRAINAGE PLAN

PEARSON ENGINEERING
 PEARSONENG.COM PH. 705.719.4785

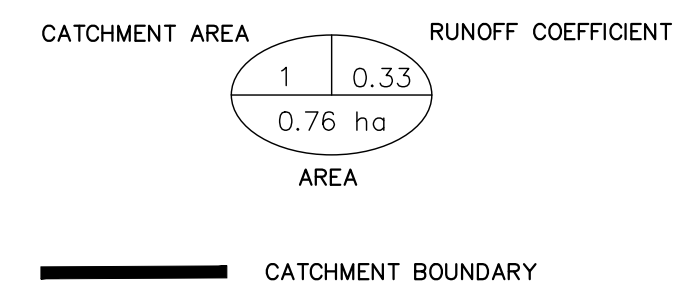
DESIGNED BY	PCO	HORIZ SCALE	1:250	PROJECT #	18037
DRAWN BY	MJRW	VERT SCALE		DRAWING #	STM-1
CHECKED BY	GMP	DATE	SEPTEMBER 2018	REVISION #	8



KEYMAP

LEGEND

- SAN MAINTENANCE HOLE
- CATCH BASIN
- ▣ DOUBLE CATCH BASIN
- ⊕ DOUBLE CATCH BASIN MAINTENANCE HOLE
- ⊗ CATCH BASIN MAINTENANCE HOLE
- STORM MAINTENANCE HOLE
- x 386.96 PROPOSED ELEVATION
- 386.96 EXISTING ELEVATION
- 2% PROPOSED GRADE
- SERVICE CAP
- ◆ FIRE HYDRANT
- ⊕ WATER VALVE
- CS CURB STOP
- H.P. HYDRO POLE
- ⊠ BELL PEDESTAL
- ⊠ HYDRO TRANSFORMER
- ⊙ LS LIGHT STANDARD
- ⊙ WATER METER
- BARRIER CURB
- ➔ OVERLAND FLOW DIRECTION



P:\A\100000\Working\Folders\18037 - TMD, 290-294 Georgian Dr., Barrie\Engineering\18037-BASE_VIEW.dwg Layout:STM-2 Plotted Mar 07, 2023 @ 1:32pm by emalloske @ PEARSON ENGINEERING LTD.

SITE BENCHMARK:
 LOCATED AT TOP OF HYDRANT SPINDLE ON THE SOUTH SIDE OF GEORGIAN DRIVE, ACROSS FROM SITE.
 ELEV. 267.46m

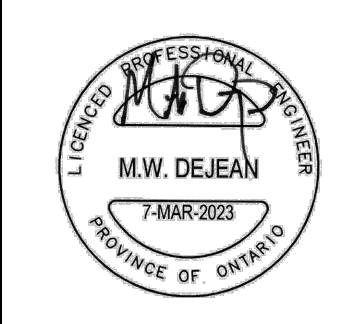
SURVEY:
 TOPOGRAPHIC SURVEY COMPLETED BY RUDY MAK SURVEYING LTD. AND ISSUED ON AUGUST 1, 2014.

NO.	REVISION NOTE	DATE	BY
8.	REVISED AS PER CITY OF BARRIE COMMENTS	03/07/23	JPE
7.	REVISED AS PER CITY OF BARRIE COMMENTS	01/26/23	PCO
6.	REVISED AS PER CITY OF BARRIE COMMENTS	09/13/22	JPE
5.	REVISED AS PER CITY OF BARRIE COMMENTS	03/07/22	MJWP
4.	REVISED AS PER CITY OF BARRIE COMMENTS	09/08/21	JPE
NO.	REVISION NOTE		

CONTROL MONUMENTS:

HORIZONTAL
 00119713803 - SOUTHWEST CORNER OF GEORGIAN DR & PENETANGUISHENE RD. EASTING 607787.028 NORTHING 4918904.790
 00119713804 - SOUTH SIDE OF GEORGIAN DR. ~110m WEST OF LARKIN DR. EASTING 607477.286 NORTHING 4918937.253

VERTICAL
 03120030002 - CAP - EASTING 606202 NORTHING 4918802
 RVH HELIPOINT AT WEST ENTRANCE. ELEV: 260.583
 00820038068 - CAP - EASTING 606084, NORTHING 4918831
 N. SIDE OF GEORGIAN DR. ~105m EAST OF GOVERNORS DR. ELEV: 258.425



THE GEORGIAN APARTMENTS
 290,294,298,&302 GEORGIAN DRIVE
 BARRIE, ONTARIO

POST DEVELOPMENT STORM DRAINAGE PLAN

PEARSON ENGINEERING
 PEARSONENG.COM PH. 705.719.4785

DESIGNED BY	PCO	HORIZ SCALE	1:250	PROJECT #	18037
DRAWN BY	MJRW	VERT SCALE		DRAWING #	STM-2
CHECKED BY	GMP	DATE	SEPTEMBER 2018	REVISION #	8

