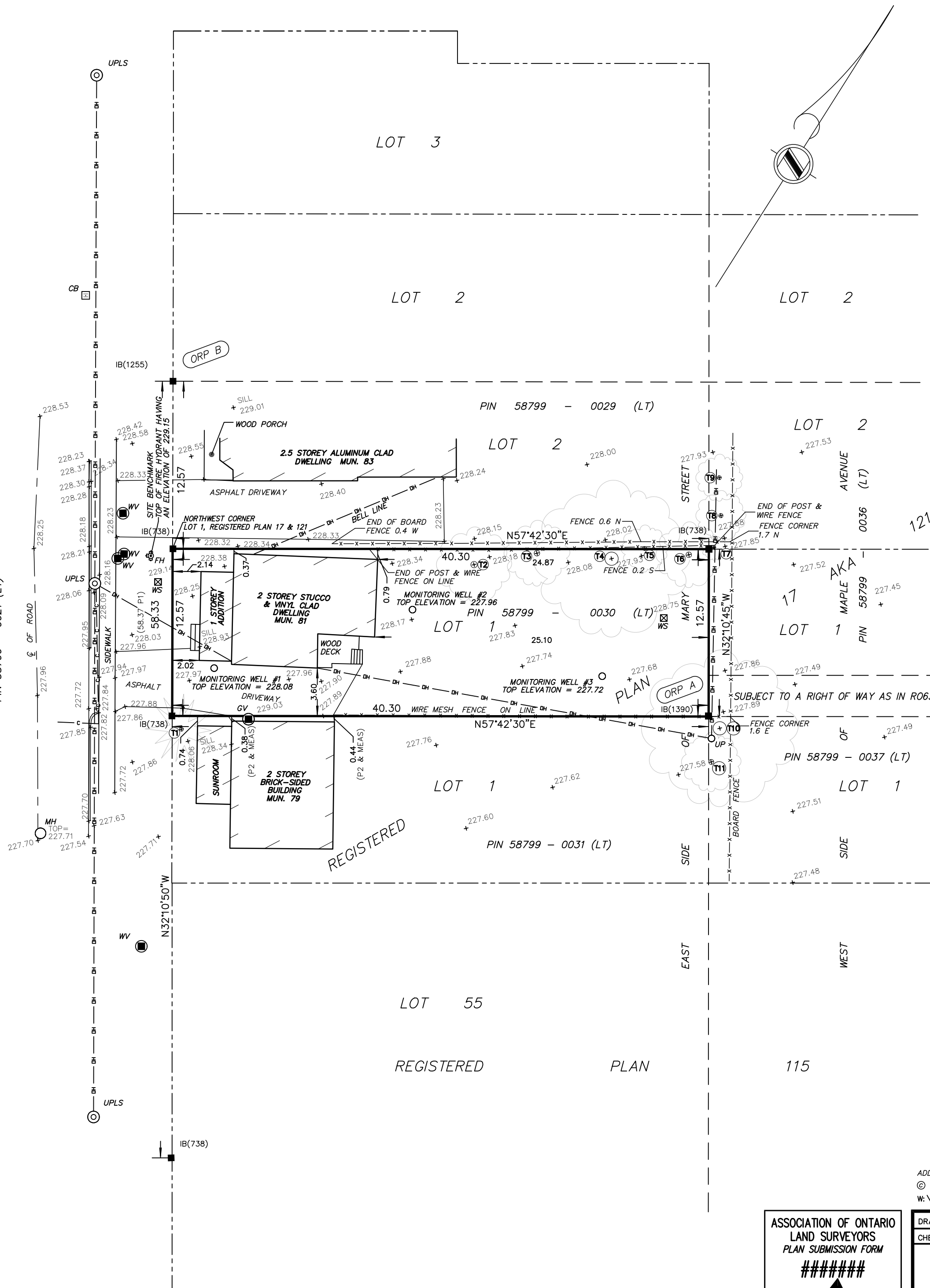




MARY STREET
(BY REGISTERED PLAN 17 AKA 121)
PIN 58799 - 0021 (LT)



PLAN OF SURVEY SHOWING TOPOGRAPHIC FEATURES
OF PART OF
LOT 1
EAST SIDE OF MARY STREET
REGISTERED PLAN 17 AKA 121
CITY OF BARRIE
COUNTY OF SIMCOE

SCALE 1 : 250
5 4 3 2 1 0 5 10 15 Metres

RAIKES GEOMATICS INC.
2020

METRIC

DISTANCES AND COORDINATES SHOWN ON THIS PLAN ARE IN METRES AND CAN BE CONVERTED TO FEET BY DIVIDING BY 0.3048

BEARING NOTE

BEARINGS HEREON ARE UTM GRID BEARINGS AND ARE DERIVED FROM OBSERVED REFERENCE POINTS (ORPs), A AND B, BY REAL TIME NETWORK (RTN) OBSERVATIONS AND ARE REFERRED TO THE CENTRAL MERIDIAN 81°W IN ZONE 17 BASED ON NAD83 ORIGINAL (2010 EPOCH).

BEARING ROTATION

FOR BEARING COMPARISONS, A ROTATION OF 0°28'20" COUNTERCLOCKWISE WAS APPLIED TO REGISTERED PLAN 17 (P1)

DISTANCE NOTE

DISTANCES SHOWN ON THIS PLAN ARE HORIZONTAL GROUND DISTANCES AND CAN BE CONVERTED TO GRID DISTANCES BY MULTIPLYING BY THE COMBINED SCALE FACTOR OF 0.999703.

ELEVATION NOTE

ELEVATIONS ARE GEODETIC IN ORIGIN AND WERE DERIVED FROM GNSS OBSERVATIONS AND THE PRECISE POINT POSITIONING (PPP) SERVICE AND ARE REFERRED TO THE CGVD28 (HTV2.0) DATUM.

LEGEND

- DENOTES FOUND MONUMENT
- IB DENOTES IRON BAR
- 738 DENOTES R.C. KIRKPATRICK, OLS
- 1255 DENOTES RODNEY C. RAIKES SURVEYING LTD.
- 1390 DENOTES PAUL R. KITCHEN SURVEYING LTD.
- UPLS DENOTES UTILITY POLE WITH LIGHT STANDARD
- UP DENOTES UTILITY POLE
- OH DENOTES OVERHEAD HYDRO
- FH DENOTES FIRE HYDRANT
- GV DENOTES GAS VALVE
- WS DENOTES WOOD STAKE
- WV DENOTES WATER VALVE
- MH DENOTES MANHOLE
- CB DENOTES CATCH BASIN
- CONC. DENOTES CONCRETE
- ☒ DENOTES CENTRELINE
- + DENOTES EXISTING ELEVATION
- P1 DENOTES REGISTERED PLAN 17 AKA 121
- P2 DENOTES PLAN OF SURVEY BY R.C. KIRKPATRICK DATED AUGUST 30, 1972

OBSERVED REFERENCE POINTS (ORPs) ARE DERIVED FROM GNSS OBSERVATIONS USING THE CAN-NET VRS NETWORK, UTM ZONE 17 (81° LONGITUDE) NAD83 CSRS (2010 EPOCH) COORDINATES TO URBAN ACCURACY PER SEC. 14 (2) OF O.REG 216/10		
UTM NAD83 CSRS COORDINATE TABLE		
POINT ID	NORTHING	EASTING
ORP A	4916037.98	604087.67
ORP B	4916037.72	604040.25
COORDINATES CANNOT, IN THEMSELVES, BE USED TO RE-ESTABLISH CORNERS OR BOUNDARIES SHOWN ON THIS PLAN		

SURVEYOR'S CERTIFICATE

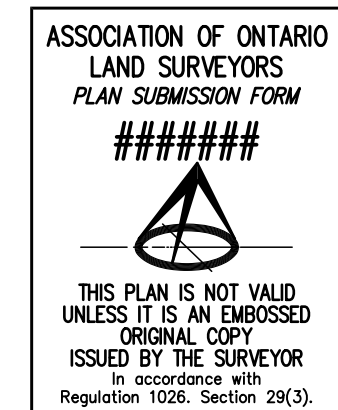
I CERTIFY THAT:

- THIS SURVEY AND PLAN ARE CORRECT AND IN ACCORDANCE WITH THE SURVEYS ACT, THE SURVEYORS ACT AND THE REGULATIONS MADE UNDER THEM.
- THE SURVEY WAS COMPLETED ON THE 11th DAY OF NOVEMBER 2022.

DATE

PETER T. RAIKES, BSc., CLS, MRICS
ONTARIO LAND SURVEYOR

ADDITIONAL COPIES AVAILABLE AT "www.landsurveyrecords.com"
© COPYRIGHT RAIKES GEOMATICS INC., 2020
W:\PROJECTS\PROJECTS_2020\206054\MSCAD\206054_TOP0.DWG



DRAWN BY : RJP	PROJECT No. 206054
CHECKED BY : CPR	

RAIKES
GEOMATICS INC.

Barrie Office: (705) 722 - 6222
Midland Office: (705) 526 - 7552
Email : info@survey4u.com

642 Welham Road, Barrie, ON L4N 9A1
529 Elizabeth Street, Midland, ON L4R 2A2
Website : survey4u.com

TREE TABLE		
POINT	TYPE	DIAMETER
T1	CONIFEROUS	0.3 M
T2	DECIDUOUS	0.48 M
T3	DECIDUOUS	0.42 M
T4	DECIDUOUS	1.0 M
T5	DECIDUOUS	0.3 M
T6	DECIDUOUS	0.42 M
T7	DECIDUOUS	0.16 M
T8	DECIDUOUS	0.32 M
T9	DECIDUOUS	0.3 M
T10	DECIDUOUS	1.0 M
T11	DECIDUOUS	0.38 M

REVISIONS TABLE		
DATE	BY	COMMENT
2020-07-24	EKJ	RELEASED FOR DESIGN
2022-11-11	JJR	ADDED TREES, MONITORING WELLS AND FOUND STAKES