

## 1. DRAWINGS

- THE NOTES ON THIS SHEET APPLY TO ALL WORKS UNDER THIS CONTRACT UNLESS OTHERWISE NOTED ON THE SPECIFIC DETAIL DWGS.
- THE STANDARD DRAWINGS OF THE LOCAL MUNICIPALITY, ONTARIO PROVINCIAL STANDARDS AND SPECIFICATIONS (OPSS) AND THE ONTARIO PROVINCIAL STANDARD DRAWINGS (OPSD) CONSTITUTE PART OF THE PLANS OF THIS CONTRACT.
- ORDER OF PRECEDENCE OF STANDARD DRAWINGS IS FIRSTLY THE LOCAL MUNICIPALITY AND SECONDLY ONTARIO PROVINCIAL STANDARD DRAWINGS.
- THE STANDARD DRAWINGS INCLUDED WITH THESE PLANS ARE PROVIDED FOR CONVENIENCE ONLY AND ARE NOT TO BE CONSTRUED TO BE A COMPLETE SET FOR THE PURPOSE OF THE CONTRACT. IT IS THE CONTRACTOR'S RESPONSIBILITY TO OBTAIN ALL RELEVANT STANDARD DRAWINGS AND SPECIFICATIONS AS REQUIRED FOR THIS CONTRACT.

## 2. MEASUREMENTS

- ALL DIMENSIONS ARE IN METRES, EXCEPT PIPE DIAMETERS, WHICH ARE IN MILLIMETRES, UNLESS SPECIFIED OTHERWISE.
- ALL DIMENSIONS SHALL BE CHECKED AND VERIFIED IN THE FIELD BY THE CONTRACTOR PRIOR TO ANY CONSTRUCTION, AND ANY DISCREPANCIES MUST BE REPORTED IMMEDIATELY TO THE ENGINEER.

## 3. GENERAL

- EXISTING SERVICES AND UTILITIES SHOWN ON THESE CONTRACT DRAWINGS ARE BASED ON THE BEST INFORMATION AVAILABLE AND THEIR LOCATIONS ARE NOT GUARANTEED. THE CONTRACTOR SHALL INTERPRET THIS INFORMATION AS THEY WISH WITH THE UNDERSTANDING THAT THE OWNER DISCLAIMS ALL RESPONSIBILITY FOR ITS ACCURACY AND/OR SUFFICIENCY. THE CONTRACTOR IS REQUIRED TO NOTIFY THE VARIOUS UTILITY COMPANIES 48 HOURS PRIOR TO THE COMMENCEMENT OF ANY WORK.
- NATIVE MATERIAL, SUITABLE FOR BACKFILL, SHALL BE COMPACTED TO 95% STANDARD PROCTOR MAXIMUM DRY DENSITY.
- GRANULAR MATERIAL, USED FOR BACKFILL, SHALL BE PLACED IN LAYERS 150mm IN DEPTH MAXIMUM AND COMPACTED TO 100% STANDARD PROCTOR MAXIMUM DRY DENSITY.
- ALL DISTURBED AREAS ARE TO BE REINSTATED TO THEIR ORIGINAL CONDITION OR BETTER, AS DETERMINED BY THE ENGINEER. ALL GRASS AND VEGETATION COVERED AREAS SHALL BE RESTORED BY PLACING 200mm OF APPROVED TOPSOIL AND NURSERY SOO UNLESS NOTED OTHERWISE.

## 4. PARKING LOT

- NATIVE SUBGRADE TO BE COMPACTED TO MINIMUM 98% STANDARD PROCTOR MAXIMUM DRY DENSITY.
- PAVEMENT STRUCTURE TO BE CONFIRMED BY GEOTECHNICAL ENGINEER PRIOR TO START OF CONSTRUCTION
- THE PARKING LOT PAVEMENT STRUCTURE SHALL CONSIST OF THE FOLLOWING:
  - LIGHT DUTY
    - 50mm HL4
    - 50mm HL8
    - 150mm GRANULAR "A"
    - 350mm GRANULAR "B"
  - HEAVY DUTY
    - 50mm HL4
    - 50mm HL8
    - 150mm GRANULAR "A"
    - 350mm GRANULAR "B"

## 5. SEWERS

- INTERNAL SANITARY SEWERS AND LATERALS TO BE MINIMUM 150mm DIAMETER PVC DR 28 WITH JOINTS CONFORMING TO CSA STANDARD A257.3.
- SEWERS SHALL BE CONSTRUCTED WITH BEDDING AS PER OPSD 802.010 (GRANULAR 'A' EMBEDMENT MATERIAL), UNLESS APPROVED OTHERWISE BY THE ENGINEER.
- PRECAST MANHOLES SHALL BE 1200mm DIAMETER UNLESS OTHERWISE SPECIFIED, AND SHALL BE IN ACCORDANCE WITH OPSD 701.010. FRAME AND GRATE TO BE "TYPE A" CLOSED COVER AND TO CONFORM TO OPSD 401.010.
- MANHOLE TOPS ARE TO BE SET TO FINAL GRADE.

## 6. WATERMAINS

- THE MINIMUM HORIZONTAL SEPARATION BETWEEN THE WATERMAIN AND THE SANITARY/STORM SEWER IS TO BE 2.5 METERS.
- A MINIMUM OF 0.5m VERTICAL CLEARANCE BETWEEN THE WATERMAIN, SANITARY, STORM AND/OR ALL UTILITIES MUST BE KEPT, WHILE STILL MAINTAINING A MINIMUM DEPTH OF COVER AT ALL TIMES. WHERE WATERMAIN CONFLICTS WITH SEWER PIPE, DEFLECT WATERMAIN HORIZONTALLY OR VERTICALLY TO OBTAIN MINIMUM COVER AND VERTICAL CLEARANCE.
- WATERMAINS SHALL BE PVC DR 18 AND INSTALLED WITH A MINIMUM COVER OF 1.7m (MEASURED FROM FINISHED GRADE TO TOP OF WATERMAIN). IF MINIMUM COVER CAN NOT BE ACHIEVED, INSULATION AS PER DETAIL PROVIDED.
- WATERMAIN SHALL BE CONSTRUCTED WITH BEDDING AS PER OPSD 802.010 (GRANULAR 'A' EMBEDMENT MATERIAL) FOR FLEXIBLE PIPES.
- COPPER WATER SERVICES 25mm DIA. SHALL BE EMBEDDED IN SAND 100mm ABOVE AND BELOW TO CONFORM TO OPSS 1104.010.
- WATERMAIN BEDDING SHALL ADHERE TO THE MUNICIPAL STANDARD AND BE PLACED MIN 150mm BELOW AND 300mm ABOVE THE WATERMAIN.
- CONCRETE THRUST BLOCKS ARE TO BE INSTALLED AT ALL TEES, BENDS, HYDRANTS, ENDS OF MAINS AND CONNECTIONS 100mm AND LARGER AS PER STANDARD DRAWINGS. ALL BENDS TO BE MECHANICALLY RESTRAINED.
- ALL JOINTS MUST BE MECHANICALLY RESTRAINED AND THRUST BLOCKED.
- ANY EXISTING, ON SITE, WATER WELLS MUST BE DECOMMISSIONED.
- WHERE A COPPER SERVICE MUST BE JOINED UNDER THE FLOOR, THE COPPER SHALL BE JOINED BY SILVER SOLDER CONNECTION ONLY.
- ALL SERVICE PIPE MATERIAL MUST BE DUCTILE IRON AND MECHANICALLY RESTRAINED FROM THE RESTRAINED FROM THE RESTRAINING FLANGE TO A MINIMUM OF 3 METERS' OUTSIDE THE FOUNDATION. ALL DUCTILE SHALL BE POLY WRAPPED FOR ADDED PROTECTION.
- OPERATION OF FIRE HYDRANTS AND VALVES ON POTABLE WATER BY OTHER THAN MUNICIPAL CITY DEPARTMENT IS PROHIBITED.
- THE CITY WILL SWAB, CHLORINATE AND FLUSH ALL NEW SERVICES. THE CONTRACTOR SHALL PERFORM PRESSURE TEST WITH WATER FIELD COORDINATOR WITNESSING.
- EXTERNAL CONTRACTOR TO COORDINATE WITH INTERNAL CONTRACTOR ON ALL INSTALLATION, SWABBING, CHLORINATING AND TESTING WITNESSED BY WATER FIELD SERVICES COORDINATOR.
- MECHANICAL RESTRAINTS WILL BE REQUIRED ON ALL HYDRANTS. A MINIMUM OF TWO PIPE LENGTHS OF EITHER SIDE OF THE HYDRANT TEE CONNECTION. HYDRANTS TO BE PAINTED RED.
- TRACING WIRE (#12 TWO STRANDED COPPER) TO BE INSTALLED ON THE TOTAL LENGTH OF ALL PVC WATERMAINS AND BROUGHT UP AT EACH HYDRANT AND CONNECTED TO FLANGE BOLT.
- SERVICE CONNECTIONS SHALL BE PLACED AT A MINIMUM SEPARATION OF 1.0m AND A MINIMUM OF 0.6m FROM JOINTS.
- CONTRACTOR TO PROVIDE PLAN FOR REMOVING CHLORINATED WATER FROM SITE.
- A CHLORINATION TAIL SHALL BE INSTALLED JUST BEHIND TAPPING VALVE TO FACILITATE CHLORINATING SERVICE, TO BE REMOVED AFTER TESTING.

GENERAL NOTES									
1. DRAWINGS									
A. ALL DRAWINGS SHALL BE PRODUCED IN ACCORDANCE WITH CURRENT CITY OF BARRIE STANDARDS & TIMERS FOR PLAN & PROFILE DRAWINGS, GENERAL SERVICE PLAN & LID GRADING PLANS.									
2. MEASUREMENTS									
A. ALL DIMENSIONS ARE IN METRES, EXCEPT PIPE DIAMETERS, WHICH ARE IN MILLIMETRES, UNLESS SPECIFIED OTHERWISE.									
3. GENERAL									
A. ALL WORK SHALL BE IN ACCORDANCE WITH CURRENT CITY OF BARRIE STANDARD DRAWINGS (BSD) AND ONTARIO PROVINCIAL STANDARD DRAWINGS (OPSD).									
B. ORDER OF PRECEDENCE OF STANDARD DRAWINGS IS FIRSTLY CITY OF BARRIE STANDARD DRAWINGS (BSD) AND SECONDLY ONTARIO PROVINCIAL STANDARD DRAWINGS (OPSD).									
C. LOCATION OF EXISTING SERVICES ARE NOT GUARANTEED. THE CONTRACTOR IS REQUIRED TO NOTIFY THE VARIOUS UTILITY COMPANIES 48 HOURS PRIOR TO THE COMMENCEMENT OF ANY WORK.									
D. A ROAD OCCUPANCY PERMIT IS REQUIRED FROM THE BARRIE AND PUBLIC OPERATIONS BRANCH PRIOR TO THE COMMENCEMENT OF WORK WITHIN ANY CITY RIGHT-OF-WAY.									
E. A SITE ALTERATION PERMIT IS REQUIRED FROM THE ENGINEERING DEPARTMENT PRIOR TO THE COMMENCEMENT OF ANY EARTH WORKS ON THE SITE.									
F. NATIVE MATERIAL, SUITABLE FOR BACKFILL, SHALL BE COMPACTED TO 95% STANDARD PROCTOR MAXIMUM DRY DENSITY.									
G. GRANULAR MATERIAL, USED FOR BACKFILL, SHALL BE PLACED IN LAYERS 150mm IN DEPTH MAXIMUM AND COMPACTED TO 100% STANDARD PROCTOR MAXIMUM DRY DENSITY.									
H. ALL DISTURBED AREAS ARE TO BE REINSTATED TO THEIR ORIGINAL CONDITION OR BETTER, AS DETERMINED BY THE CITY ENGINEERING DEPARTMENT.									
I. ALL SILT CONTROL AND EROSION PROTECTION DEVICES ARE TO BE IN PLACE PRIOR TO THE COMMENCEMENT OF CONSTRUCTION AND SHALL REMAIN IN PLACE AND BE MAINTAINED BY THE CONTRACTOR UNTIL CONSTRUCTION IS COMPLETE AND THE GRASS HAS ESTABLISHED GROWTH, SUBJECT TO APPROVAL OF THE CITY ENGINEERING DEPARTMENT.									
CITY OF BARRIE STANDARD		3. IS NOTE, SEE REVISION & 31. ADDED		J.S.		05.01.10		APPROVED	
GENERAL NOTES		1. S.D. - "ENGINEERING"		B.R.		05.10.08		SCALE: N.T.S.	
NO.		REVISION		APPROVED		DATE		BSD-N6	

GENERAL NOTES									
1. TYPICAL DETAIL ONLY. TRENCH PROTECTION SHALL BE DESIGNED TO MEET THE CITY OF BARRIE STANDARD DRAWINGS (BSD) AND ONTARIO PROVINCIAL STANDARD DRAWINGS (OPSD).									
2. TRENCH PROTECTION SHALL BE DESIGNED TO MEET THE CITY OF BARRIE STANDARD DRAWINGS (BSD) AND ONTARIO PROVINCIAL STANDARD DRAWINGS (OPSD).									
3. INDICATING THE BOTTOM OF THE TRENCH MAY BE REQUIRED IF EXISTING INFRASTRUCTURE IS UNDER WATERMAIN.									
4. ALL UNITS IN MILLIMETRES UNLESS OTHERWISE NOTED.									
CITY OF BARRIE STANDARD DETAIL		TYPICAL INSULATION DETAIL		REVISED		DATE: FEB 2015		APPROVED	
NO.		REVISION		APPROVED		DATE		BSD-514	

GENERAL NOTES - WATERMAIN									
1. CONTRACTOR SHALL NOTIFY THE CITY OF BARRIE WATER OPERATIONS DEPARTMENT A MINIMUM OF 48 HOURS IN ADVANCE OF THEIR INTENTION TO PERFORM WORK ON WATER INFRASTRUCTURE.									
2. LOCATION OF HYDRANTS AND VALVES ON THE TOTAL WATER SYSTEM OR OTHER THAN QUALIFIED WATER OPERATIONS STAFF AS PRESENTED BY CURRENT BARRIE CITY SERVICE FILES ARE PER THE CURRENT FILES BY PLAN. THE CITY WATER OPERATIONS STAFF WILL MARK, PRESERVE THE CHANGELINE AND JOURNAL ANY IMPROVEMENTS.									
3. MINIMUM COVER OVER WATERMAIN SHALL BE 1.7m. THE MINIMUM HORIZONTAL SEPARATION BETWEEN WATERMAIN AND SEWERS SHALL BE 2.5m. MINIMUM COVER OVER WATERMAIN SHALL BE 1.7m. THE MINIMUM HORIZONTAL SEPARATION BETWEEN WATERMAIN AND SEWERS SHALL BE 2.5m. MINIMUM COVER OVER WATERMAIN SHALL BE 1.7m. THE MINIMUM HORIZONTAL SEPARATION BETWEEN WATERMAIN AND SEWERS SHALL BE 2.5m.									
4. WATERMAIN SHALL BE INSTALLED IN BEDDING AS PER OPSD 802.010 (GRANULAR 'A' EMBEDMENT MATERIAL) FOR FLEXIBLE PIPES AND OPSD 802.010 (GRANULAR 'A' EMBEDMENT MATERIAL) FOR RIGID PIPES UNLESS OTHERWISE APPROVED BY THE DIRECTOR OF WATER OPERATIONS. ALTERNATIVE EMBEDMENT MATERIAL, SAND WITH 10% GRANULAR, IS PERMITTED FOR RIGID PIPES UNLESS OTHERWISE APPROVED BY THE DIRECTOR OF WATER OPERATIONS. ALTERNATIVE EMBEDMENT MATERIAL, SAND WITH 10% GRANULAR, IS PERMITTED FOR RIGID PIPES UNLESS OTHERWISE APPROVED BY THE DIRECTOR OF WATER OPERATIONS.									
5. WATERMAIN SHALL BE INSTALLED IN BEDDING AS PER OPSD 802.010 (GRANULAR 'A' EMBEDMENT MATERIAL) FOR FLEXIBLE PIPES AND OPSD 802.010 (GRANULAR 'A' EMBEDMENT MATERIAL) FOR RIGID PIPES UNLESS OTHERWISE APPROVED BY THE DIRECTOR OF WATER OPERATIONS. ALTERNATIVE EMBEDMENT MATERIAL, SAND WITH 10% GRANULAR, IS PERMITTED FOR RIGID PIPES UNLESS OTHERWISE APPROVED BY THE DIRECTOR OF WATER OPERATIONS.									
6. WATERMAIN SHALL BE INSTALLED IN BEDDING AS PER OPSD 802.010 (GRANULAR 'A' EMBEDMENT MATERIAL) FOR FLEXIBLE PIPES AND OPSD 802.010 (GRANULAR 'A' EMBEDMENT MATERIAL) FOR RIGID PIPES UNLESS OTHERWISE APPROVED BY THE DIRECTOR OF WATER OPERATIONS. ALTERNATIVE EMBEDMENT MATERIAL, SAND WITH 10% GRANULAR, IS PERMITTED FOR RIGID PIPES UNLESS OTHERWISE APPROVED BY THE DIRECTOR OF WATER OPERATIONS.									
7. NEW WATERMAIN TO BE PVC DR 18 OR 20mm MINIMUM GUTTER FROM CURB AS PER THE APPROVED MANUFACTURERS PRODUCTS FOR LINEAR WATER SYSTEMS LIST.									
8. TRACING WIRE SHALL BE #12 AWG AND 18 INCHES LONG. COPPER OR ALUMINUM SHALL BE INSTALLED ON THE TOTAL LENGTH OF ALL WATERMAIN AND BACKFILL AT EACH JOINT AND CONNECTED TO FLANGE BOLT. ALL SPICES TO BE USED CONFORM TO THE APPROVED MANUFACTURERS PRODUCTS FOR LINEAR WATER SYSTEMS LIST.									
9. ALL WATER SERVICES SHALL BE MINIMUM 25mm PVC DR 28 OR 30mm COULDN'T HAVE POLYETHYLENE UNLESS OTHERWISE APPROVED BY THE DIRECTOR OF WATER OPERATIONS. WATER SERVICES SHALL BE USED WHEN TAPPING INTO PVC WATERMAIN.									
10. SERVICE TAPPING SHALL BE PLACED AT A MINIMUM SEPARATION OF 1.0m AND A MINIMUM OF 0.6m FROM JOINTS, END OF PIPE.									
11. WHEN PIPES ARE TO BE INSTALLED AS PER OPSD 802.010 AND REMOVED AS DIRECTED, SHABBING SHOULD BE TO SUPPLY BY A WATER OPERATIONS STAFF REPRESENTATIVE. ALL BENDS ARE TO BE MECHANICALLY RESTRAINED.									
12. ALL NEW WORK STOPS ARE TO BE KEPT AT PROPERLY LANE AND OUT OF DRAINAGE AND ROADWAYS.									
CITY OF BARRIE STANDARD DETAIL		GENERAL NOTES - WATERMAIN		REVISED		DATE: FEB 2015		APPROVED	
NO.		REVISION		APPROVED		DATE		BSD-500	

GENERAL NOTES - SANITARY SEWER									
1. TYPICAL DETAIL ONLY. TRENCH PROTECTION SHALL BE DESIGNED TO MEET THE CITY OF BARRIE STANDARD DRAWINGS (BSD) AND ONTARIO PROVINCIAL STANDARD DRAWINGS (OPSD).									
2. TRENCH PROTECTION SHALL BE DESIGNED TO MEET THE CITY OF BARRIE STANDARD DRAWINGS (BSD) AND ONTARIO PROVINCIAL STANDARD DRAWINGS (OPSD).									
3. INDICATING THE BOTTOM OF THE TRENCH MAY BE REQUIRED IF EXISTING INFRASTRUCTURE IS UNDER WATERMAIN.									
4. ALL UNITS IN MILLIMETRES UNLESS OTHERWISE NOTED.									
CITY OF BARRIE STANDARD		GENERAL NOTES - SANITARY SEWERS		REVISED		DATE: FEB 2015		APPROVED	
NO.		REVISION		APPROVED		DATE		BSD-N3	

GENERAL NOTES - STORM SEWER									
1. TYPICAL DETAIL ONLY. TRENCH PROTECTION SHALL BE DESIGNED TO MEET THE CITY OF BARRIE STANDARD DRAWINGS (BSD) AND ONTARIO PROVINCIAL STANDARD DRAWINGS (OPSD).									
2. TRENCH PROTECTION SHALL BE DESIGNED TO MEET THE CITY OF BARRIE STANDARD DRAWINGS (BSD) AND ONTARIO PROVINCIAL STANDARD DRAWINGS (OPSD).									
3. INDICATING THE BOTTOM OF THE TRENCH MAY BE REQUIRED IF EXISTING INFRASTRUCTURE IS UNDER WATERMAIN.									
4. ALL UNITS IN MILLIMETRES UNLESS OTHERWISE NOTED.									
CITY OF BARRIE STANDARD		GENERAL NOTES - STORM SEWERS		REVISED		DATE: FEB 2015		APPROVED	
NO.		REVISION		APPROVED		DATE		BSD-N5	

GENERAL NOTES - SANITARY SEWER									
1. TYPICAL DETAIL ONLY. TRENCH PROTECTION SHALL BE DESIGNED TO MEET THE CITY OF BARRIE STANDARD DRAWINGS (BSD) AND ONTARIO PROVINCIAL STANDARD DRAWINGS (OPSD).									
2. TRENCH PROTECTION SHALL BE DESIGNED TO MEET THE CITY OF BARRIE STANDARD DRAWINGS (BSD) AND ONTARIO PROVINCIAL STANDARD DRAWINGS (OPSD).									
3. INDICATING THE BOTTOM OF THE TRENCH MAY BE REQUIRED IF EXISTING INFRASTRUCTURE IS UNDER WATERMAIN.									
4. ALL UNITS IN MILLIMETRES UNLESS OTHERWISE NOTED.									
CITY OF BARRIE STANDARD		GENERAL NOTES - SANITARY SEWERS		REVISED		DATE: FEB 2015		APPROVED	
NO.		REVISION		APPROVED		DATE		BSD-N4	

CONCRETE SIDEWALK RAMPS AT UNSIGNALIZED INTERSECTIONS									
1. TYPICAL DETAIL ONLY. TRENCH PROTECTION SHALL BE DESIGNED TO MEET THE CITY OF BARRIE STANDARD DRAWINGS (BSD) AND ONTARIO PROVINCIAL STANDARD DRAWINGS (OPSD).									
2. TRENCH PROTECTION SHALL BE DESIGNED TO MEET THE CITY OF BARRIE STANDARD DRAWINGS (BSD) AND ONTARIO PROVINCIAL STANDARD DRAWINGS (OPSD).									
3. INDICATING THE BOTTOM OF THE TRENCH MAY BE REQUIRED IF EXISTING INFRASTRUCTURE IS UNDER WATERMAIN.									
4. ALL UNITS IN MILLIMETRES UNLESS OTHERWISE NOTED.									
CITY OF BARRIE STANDARD DETAIL		CONCRETE SIDEWALK RAMPS AT UNSIGNALIZED INTERSECTIONS		REVISED		DATE: OCT 2017		APPROVED	
NO.		REVISION		APPROVED		DATE		BSD-318	

PAVEMENT LAP JOINT									
1. TYPICAL DETAIL ONLY. TRENCH PROTECTION SHALL BE DESIGNED TO MEET THE CITY OF BARRIE STANDARD DRAWINGS (BSD) AND ONTARIO PROVINCIAL STANDARD DRAWINGS (OPSD).									
2. TRENCH PROTECTION SHALL BE DESIGNED TO MEET THE CITY OF BARRIE STANDARD DRAWINGS (BSD) AND ONTARIO PROVINCIAL STANDARD DRAWINGS (OPSD).									
3. INDICATING THE BOTTOM OF THE TRENCH MAY BE REQUIRED IF EXISTING INFRASTRUCTURE IS UNDER WATERMAIN.									
4. ALL UNITS IN MILLIMETRES UNLESS OTHERWISE NOTED.									
CITY OF BARRIE STANDARD DETAIL		PAVEMENT LAP JOINT		REVISED		DATE: OCT 2017		APPROVED	
NO.		REVISION		APPROVED		DATE		BSD-318	

BACKFLOW FLAP VALVE DETAIL									
1. TYPICAL DETAIL ONLY. TRENCH PROTECTION SHALL BE DESIGNED TO MEET THE CITY OF BARRIE STANDARD DRAWINGS (BSD) AND ONTARIO PROVINCIAL STANDARD DRAWINGS (OPSD).									
2. TRENCH PROTECTION SHALL BE DESIGNED TO MEET THE CITY OF BARRIE STANDARD DRAWINGS (BSD) AND ONTARIO PROVINCIAL STANDARD DRAWINGS (OPSD).									
3. INDICATING THE BOTTOM OF THE TRENCH MAY BE REQUIRED IF EXISTING INFRASTRUCTURE IS UNDER WATERMAIN.									
4. ALL UNITS IN MILLIMETRES UNLESS OTHERWISE NOTED.									
CITY OF BARRIE STANDARD DETAIL		BACKFLOW FLAP VALVE DETAIL		REVISED		DATE: OCT 2017		APPROVED	
NO.		REVISION		APPROVED		DATE		BSD-318	

CONCRETE BARRIER CURB									
1. TYPICAL DETAIL ONLY. TRENCH PROTECTION SHALL BE DESIGNED TO MEET THE CITY OF BARRIE STANDARD DRAWINGS (BSD) AND ONTARIO PROVINCIAL STANDARD DRAWINGS (OPSD).									
2. TRENCH PROTECTION SHALL BE DESIGNED TO MEET THE CITY OF BARRIE STANDARD DRAWINGS (BSD) AND ONTARIO PROVINCIAL STANDARD DRAWINGS (OPSD).									
3. INDICATING THE BOTTOM OF THE TRENCH MAY BE REQUIRED IF EXISTING INFRASTRUCTURE IS UNDER WATERMAIN.									
4. ALL UNITS IN MILLIMETRES UNLESS OTHERWISE NOTED.									
CITY OF BARRIE STANDARD DETAIL		CONCRETE BARRIER CURB		REVISED		DATE: OCT 2017		APPROVED	
NO.		REVISION		APPROVED		DATE		BSD-318	

ORIFICE PIPE DETAIL									
1. TYPICAL DETAIL ONLY. TRENCH PROTECTION SHALL BE DESIGNED TO MEET THE CITY OF BARRIE STANDARD DRAWINGS (BSD) AND ONTARIO PROVINCIAL STANDARD DRAWINGS (OPSD).									
2. TRENCH PROTECTION SHALL BE DESIGNED TO MEET THE CITY OF BARRIE STANDARD DRAWINGS (BSD) AND ONTARIO PROVINCIAL STANDARD DRAWINGS (OPSD).									
3. INDICATING THE BOTTOM OF THE TRENCH MAY BE REQUIRED IF EXISTING INFRASTRUCTURE IS UNDER WATERMAIN.									
4. ALL UNITS IN MILLIMETRES UNLESS OTHERWISE NOTED.									
CITY OF BARRIE STANDARD DETAIL		ORIFICE PIPE DETAIL		REVISED		DATE: OCT 2017		APPROVED	
NO.		REVISION		APPROVED		DATE		BSD-318	

**Gerrits**  
ENGINEERING

222 Mapleview Drive West, Suite 300  
Barrie, ON L4N 9E7 Canada  
Tel: 705.737.2503  
Fax: 705.737.1772  
www.gerrits.com

This drawing has been created electronically.  
Handwritten or manual revisions to the drawing are only valid when accompanied by the design engineer's initials.

Do not scale drawings.  
Check and verify all dimensions and information on the drawings and report all errors or omissions to the Consultant before proceeding with the work. This drawing shall not be reproduced in any manner, in part or in whole, for any project other than that for which it was prepared.  
This drawing, and all design concepts it contains, are an instrument of professional service and remain the property of Gerrits Engineering.

This drawing may have been reduced.  
0 5 10 20 30 40 50mm  
0" 1/4" 1/2" 1" 1 1/2" 2"

No.	Issuance Description	YY/MM/DD
1.	CLIENT REVIEW	23/01/12
2.	SITE PLAN SUBMISSION	23/02/24
3.	SITE PLAN APPROVAL	23/05/15

## SITE PLAN APPROVAL

Issued For:

Client

TAYJES HOLDING INC.

Project

221 MAPLEVIEW DRIVE, WEST DEVELOPMENT

Drawing:

## NOTES & DETAILS

Project No.	1150-003	Designed by:	MPO	Checked by:	KF
Scale:	1:300	Drawn by:	MPO	Approved by:	JDM
Orientation		Stamp			



Drawing No.

ND-1

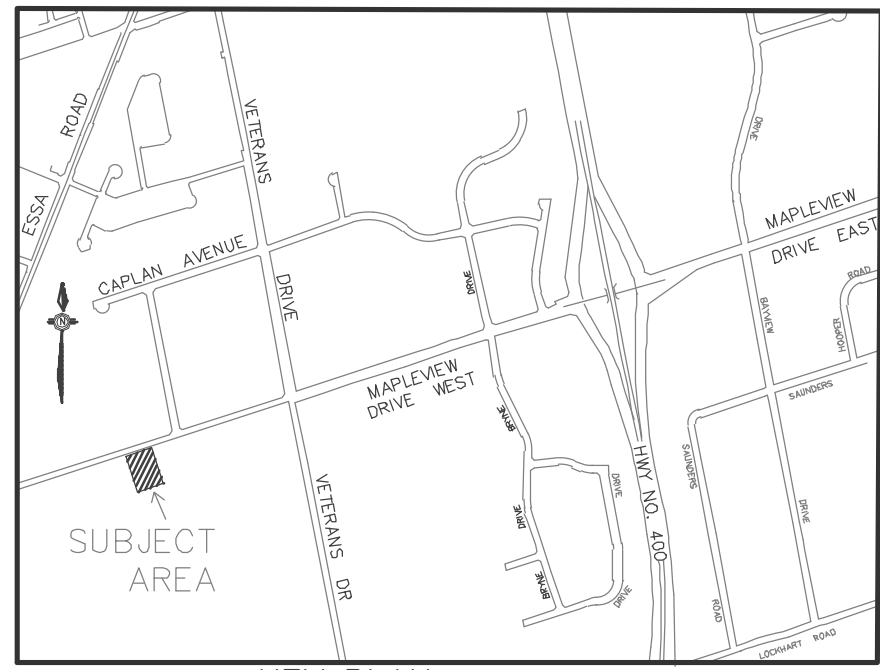
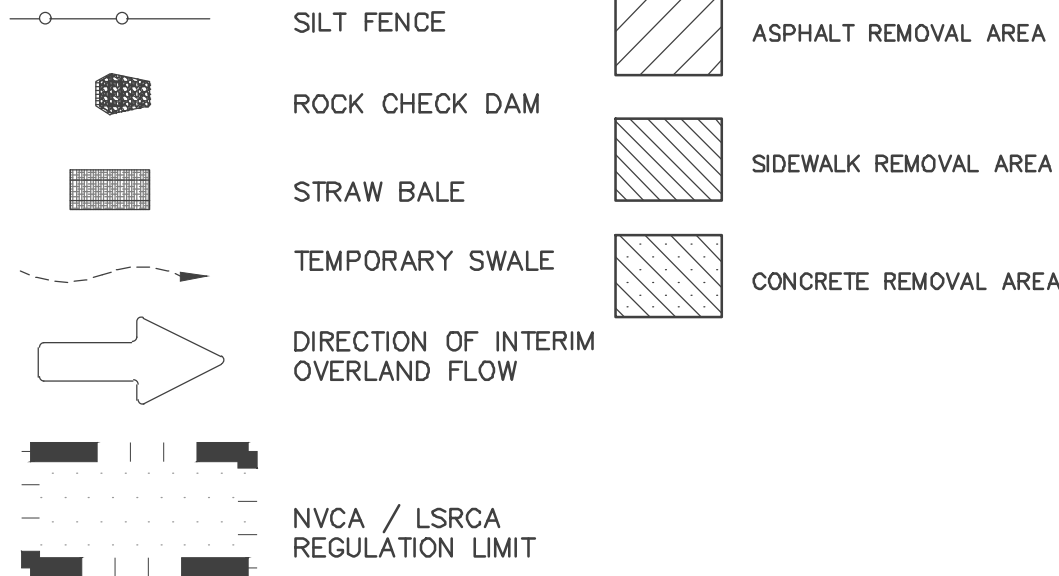
NOTES FOR SEDIMENT & EROSION CONTROL

- DISTURBED AREAS THAT HAVE FAILED TO HAVE STABLE GROUND COVER ESTABLISHED BY OCTOBER 30TH SHALL BE PROTECTED WITH A SILTATION CONTROL FENCE OR STRAW MULCH ETC. AND MAINTAINED BY THE CONTRACTOR UNTIL VEGETATION BECOMES ESTABLISHED IN THE SUBSEQUENT GROWING SEASON.
- ANY DEWATERING WASTE SHALL BE DISCHARGED TO A VEGETATED AREA AT LEAST 30 M FROM ANY WATERCOURSE AND FILTERED. FILTERING METHODS MUST BE APPROVED BY THE SITE ADMINISTRATOR.
- SILT FENCE SHALL BE PUT IN PLACE PRIOR TO AND MAINTAINED DURING ALL GRADING. SILT FENCE SHALL COMPLY WITH OPSD 219.110 FOR LIGHT DUTY AND / OR OPSD 219.130 FOR HEAVY DUTY; UNLESS NOTED OTHERWISE. SILT FENCE TO BE INSPECTED PRIOR TO COMMENCEMENT OF EARTH GRADING ACTIVITIES. SILT FENCE TO BE INSPECTED AND REPAIRED OR REPLACED IF DAMAGED AS DIRECTED BY THE SITE ADMINISTRATOR. SILT CONTROLS TO BE INSPECTED ON A REGULAR BASIS AND AFTER EVERY RAIN EVENT. INSTALLATION SHALL BE TO THE MANUFACTURER'S SUGGESTED SPECIFICATIONS.
- THE CONTRACTOR SHALL BE PREPARED FOR UNEXPECTED CONDITIONS AND ACCORDINGLY HAVE STOCKPILED MATERIALS ON SITE FOR NECESSARY REPAIRS AS A RESULT OF FAILED OR INADEQUATE CONTROL MEASURES. ALL SEDIMENT AND EROSION CONTROL MEASURES SHALL BE INSPECTED AT LEAST ONCE A WEEK, AND AFTER EVERY RAINFALL EVENT.
- MUD MATS WHERE CONSTRUCTION TRAFFIC ENTERS OR LEAVES THE SITE SHALL BE USED. MUD MATS TO BE 300mm IN DEPTH, 6.0m WIDE BY 20.0m LONG, FIRST 10.0m TO 150mm# CLEAR STONE WITH THE REMAINING 10.0m CONSISTING OF 50mm# CLEAR STONE; OR MEET MUNICIPAL STANDARDS WHERE IDENTIFIED.
- CONTRACTOR SHALL OBTAIN A CURRENT COPY AND BECOME FAMILIAR WITH OPSS 805, CONSTRUCTION SPECIFICATION FOR TEMPORARY EROSION AND SEDIMENT CONTROL MEASURES AS WELL AS ALL APPLICABLE MUNICIPAL STANDARDS.
- THE CONTRACTOR MAY CONSIDER ALTERNATIVE SEDIMENT AND EROSION CONTROL MEASURES. SUCH MEASURES SHOULD BE PRESENTED IN WRITING FOR APPROVAL OF THE SITE ADMINISTRATOR AND MUST BE APPROVED IN WRITING BY THE CONSERVATION AUTHORITY.
- THE TOPS OF ALL FILTER FABRIC MUST BE A MINIMUM OF 1.0 METRES ABOVE THE GROUND LEVEL AND ATTACHED TO THE FENCE WITH A CONTINUOUS STEEL WIRE. ALTERNATIVELY, THE FILTER FABRIC MUST BE FOLDED OVER THE TOP OF THE FENCE AND ATTACHED TO THE FENCE WITH WIRE LOOPED THROUGH THE FABRIC ON BOTH SIDES OF THE FENCE. FILTER FABRIC IS TO BE TERRAFIX 270R OR EQUIVALENT.
- ALL DISTURBED GROUND LEFT INACTIVE SHALL BE STABILIZED BY SEEDING, SODDING, MULCHING, OR COVERING OR OTHER EQUIVALENT CONTROL MEASURES. THIS PERIOD OF INACTIVITY SHALL BE AT THE DISCRETION OF THE MUNICIPAL DIRECTOR OF ENGINEERING BUT SHALL NOT EXCEED (30) DAYS OR SUCH LONGER PERIOD DEEMED ADVISABLE BY THE MUNICIPAL DIRECTOR OF ENGINEERING.
- CONTRACTOR SHALL INSTALL AND MAINTAIN CATCHBASIN SEDIMENT BARRIERS THROUGHOUT THE SITE DURING ALL CONSTRUCTION ACTIVITIES IN ORDER TO MITIGATE SEDIMENT ENTERING THE STORM STORM SEWERS.
- NO FUEL TO BE STORED ON SITE. IN CASE OF A SPILL PLEASE CONTACT: MOECC SPILLS ACTION CENTER 1-800-268-6060.
- SEDIMENT CONTROLS ARE TO REMAIN IN PLACE UNTIL WRITTEN DIRECTION IS RECEIVED FROM THE ENGINEER REGARDING THEIR REMOVAL.
- EROSION AND SEDIMENT CONTROLS WILL BE INSPECTED ON AS PER MUNICIPAL REQUIREMENTS OR AFTER SIGNIFICANT RAINFALL EVENTS.

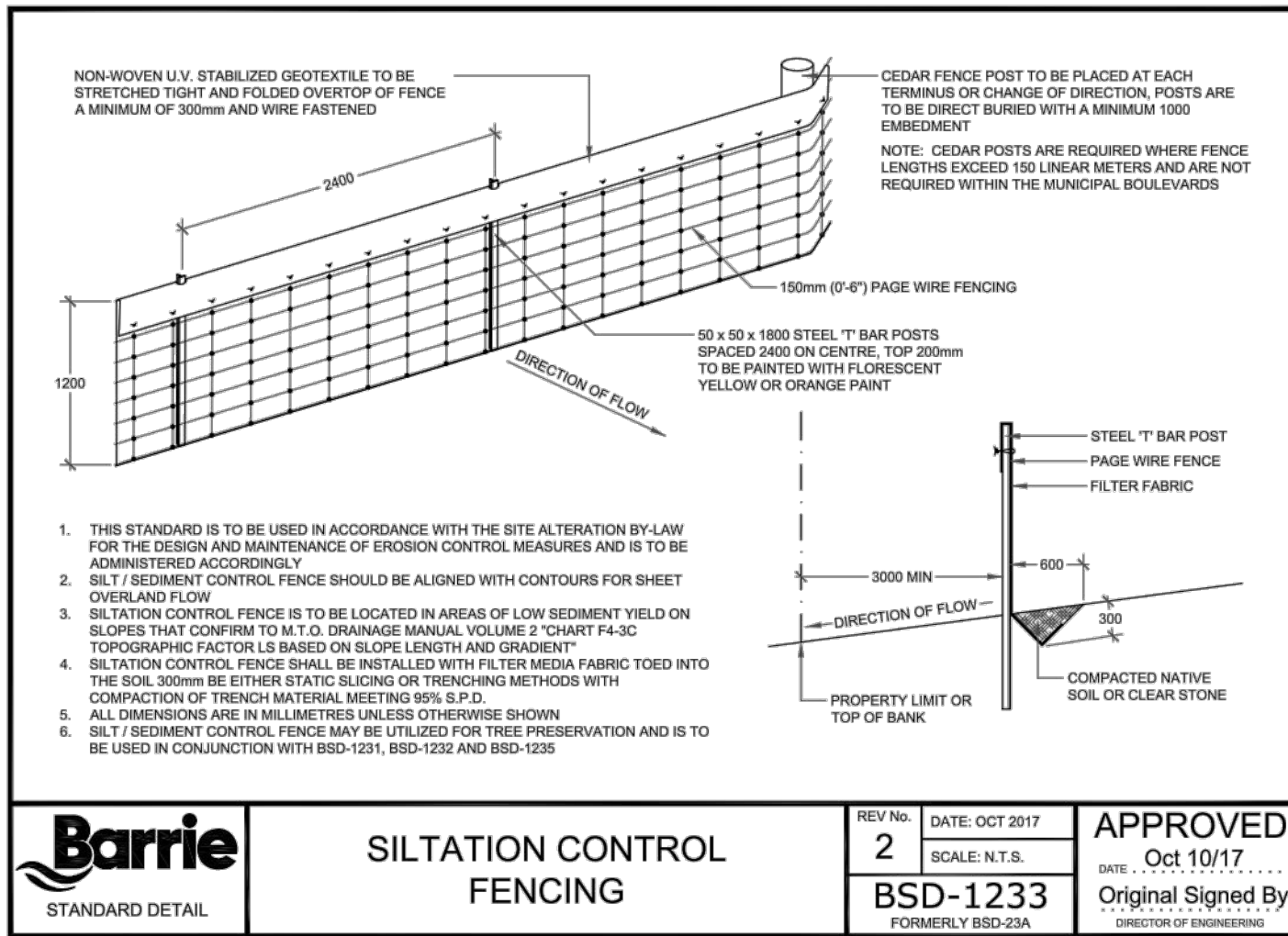
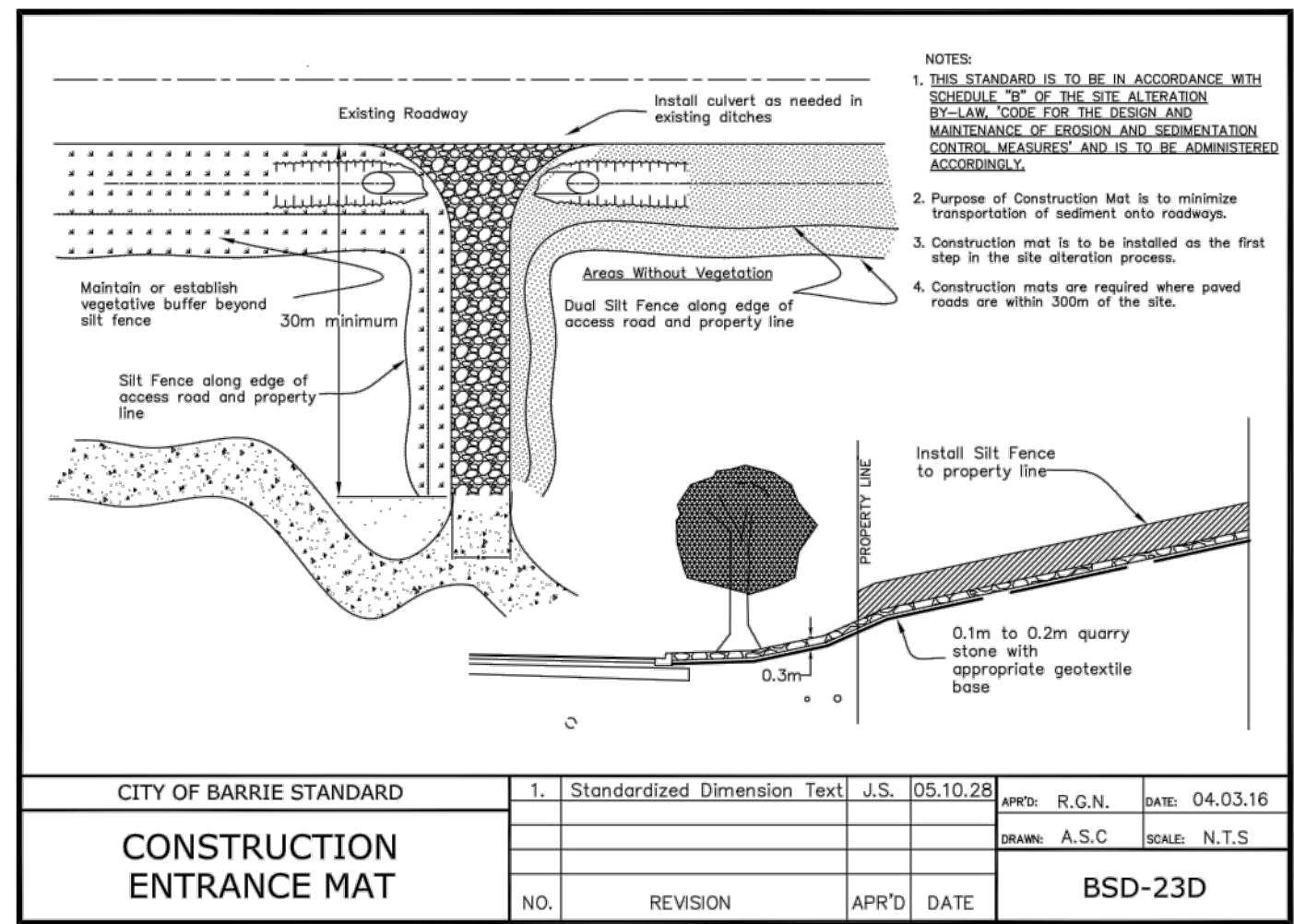
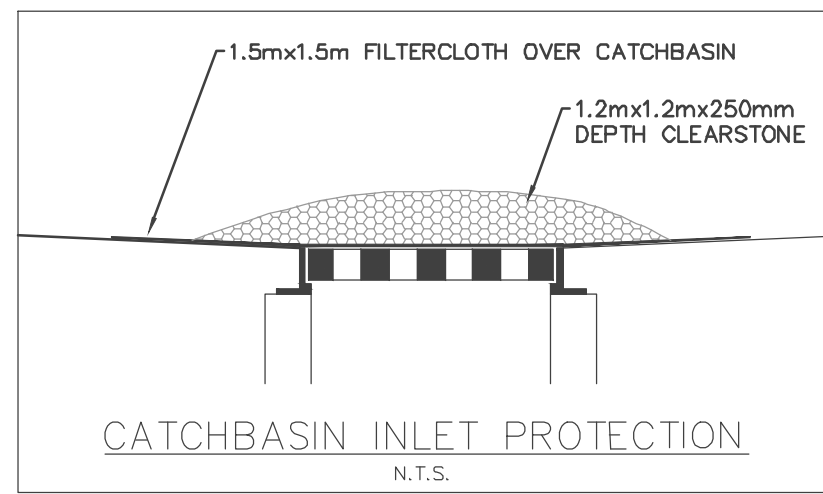
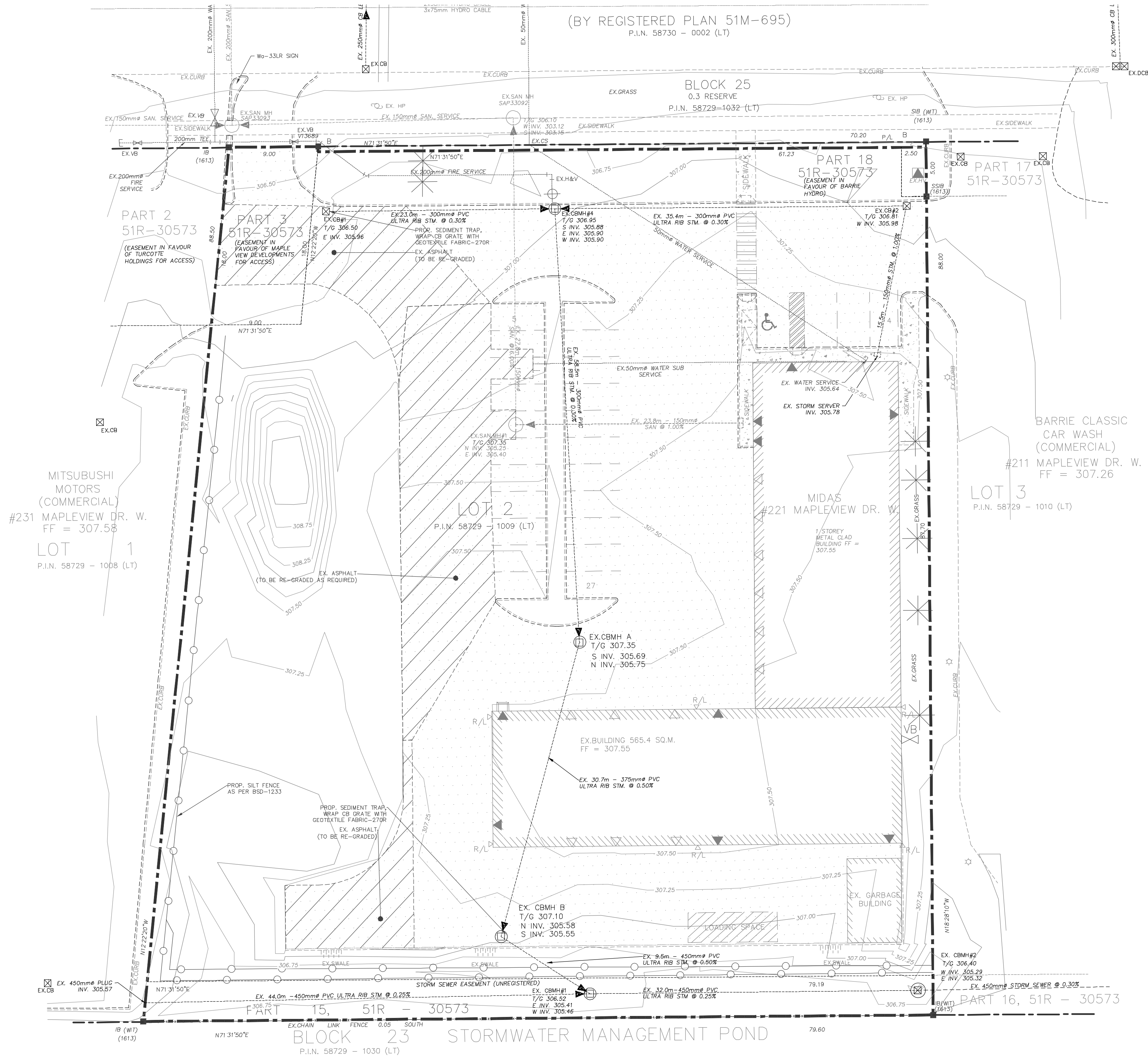
SEQUENCE OF CONSTRUCTION

- ENGINEER TO BE NOTIFIED PRIOR TO INITIATION OF ANY ON SITE WORKS.
- SILT FENCE AND CONSTRUCTION ACCESS MATS TO BE INSTALLED PRIOR TO THE COMMENCEMENT OF ANY WORKS ONSITE.
- VEGETATION REMOVAL MAY COMMENCE AFTER ALL SILT FENCE IS INSTALLED AND APPROVED BY THE ENGINEER.
- COMMENCE WITH EARTH EXCAVATION AND SITE SERVICING (TO BE REMOVED FROM SITE - NO STOCKPILE).
- EROSION CONTROL MEASURES TO BE MAINTAINED AS DIRECTED BY THE ENGINEER DURING THE CONSTRUCTION PERIOD. ADDITIONAL CONTROL MEASURES MAY BE REQUIRED AT THE DISCRETION OF THE ENGINEER.
- ALL DISTURBED GROUND LEFT INACTIVE FOR MORE THAN 30 DAYS SHALL BE STABILIZED WITH SEED, SOD, MULCH OR OTHER ADEQUATE COVERING, AS INSTRUCTED BY THE ENGINEER.

LEGEND



Site Area	6559.7 sq.m.
Area of Alteration	1600 sq.m.
Existing Land Use	LIGHT INDUSTRIAL (LI)
Adjoining Property Land Use	LIGHT INDUSTRIAL (LI)
Soil Type	SANDY LOAM (Ans)



**Gerrits**  
ENGINEERING

222 Mapleview Drive West, Suite 300  
Barrie, ON L4N 9E7 Canada  
Tel: 705.737.3303  
Fax: 705.737.1772  
www.gerrits.com

This drawing has been created electronically.

Handwritten or manual revisions to the drawing are only valid when accompanied by the design engineer's initials.

Do not scale drawings.  
Check and verify all dimensions and information on the drawings and report all errors or omissions to the Consultant before proceeding with the work.  
This drawing shall not be reproduced in any manner, in part or in whole, for any project other than that for which it was prepared.  
This drawing, and all design concepts it contains, are an instrument of professional service and remain the property of Gerrits Engineering.

This drawing may have been reduced.

No.	Issuance Description	YY/MM/DD
1.	CLIENT REVIEW	23/01/12
2.	SITE PLAN SUBMISSION	23/02/24
3.	SITE PLAN APPROVAL	23/05/15

Issued For:

SITE PLAN APPROVAL

Client

TAYJES HOLDING INC.

Project

221 MAPLEVIEW DRIVE, WEST DEVELOPMENT

Drawing

EROSION & SEDIMENT CONTROL PLAN & REMOVALS PLAN

Project No.	1150-003	Designed by:	MPO	Checked by:	KF
Scale:	1:250	Drawn by:	MPO	Approved by:	JDM
Orientation	Stamp				



Drawing No.

ESC-RM-1



	PRIVACY FENCE
	ACOUSTIC FENCE
	CHAIN LINK FENCE
	SILT FENCE
	GAS LINE
	HYDRO LINE
	BELL LINE

- 
- LANDSCAPE AREA
- ASPHALT AREA
- GRAVEL AREA
- CONCRETE AREA

222 Mapleview Drive West, Suite 300  
Barrie, ON L4N 9E7 Canada  
Tel.: 705.737.3303  
Fax.: 705.737.1772  
[www.gerreng.com](http://www.gerreng.com)

No.	Issuance Description	YY/MM/DD
1.	CLIENT REVIEW	23/01/12
2.	SITE PLAN SUBMISSION	23/02/24
3.	SITE PLAN APPROVAL	23/05/15

## SITE PLAN APPROVAL

TAYJES HOLDING INC.

Project  
221 MAPLEVIEW DRIVE, WEST  
DEVELOPMENT

### Drawing

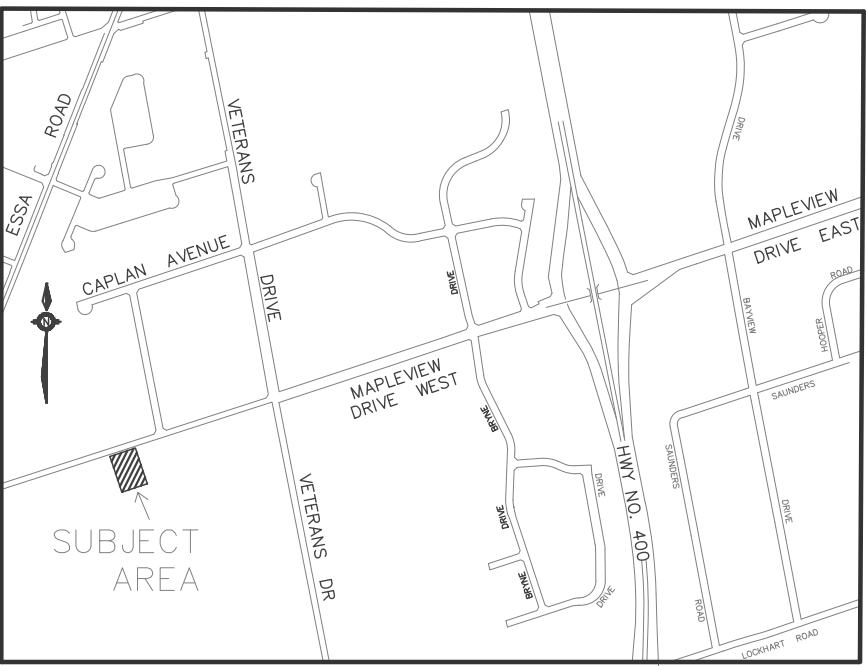
## SITE SERVICING PLAN

Project No.	1150-003	Designed by: MPO	Checked by: KF
Scale:	1:250	Drawn by: MPO	Approved by: JDM
Orientation	Stamp		



Drawing No.

SS-1



KEY PLAN  
N.T.S.

LEGEND

- PRIVACY FENCE
- ACOUSTIC FENCE
- CHAIN LINK FENCE
- SILT FENCE
- GAS LINE
- HYDRO LINE
- BELL LINE
- SAN# EXISTING SANITARY MAINTENANCE HOLE
- SAN# PROPOSED SANITARY MAINTENANCE HOLE
- CB# EXISTING CATCH BASIN
- CB# PROPOSED CATCH BASIN
- STM# EXISTING STORM MAINTENANCE HOLE
- STM# PROPOSED STORM MAINTENANCE HOLE
- SERVICE CAP
- HYD&V# EXISTING FIRE HYDRANT
- VB# PROPOSED FIRE HYDRANT
- VB# EXISTING VALVE BOX
- VB# PROPOSED VALVE BOX
- PROPOSED SIGN
- EXISTING LIGHT POLE
- MANDOOR
- OVERHEAD DOOR
- FIRE DEPT CONNECTION

- LANDSCAPE AREA
- ASPHALT AREA
- GRAVEL AREA
- CONCRETE AREA

**Gerrits**  
ENGINEERING

222 Mapleview Drive West, Suite 300  
Barrie, ON L4N 9E7 Canada  
Tel: 705.737.3303  
Fax: 705.737.1772  
www.gerritseng.com

This drawing has been created electronically.  
Handwritten or manual revisions to the drawing are only valid when accompanied by the design engineer's initials.

Do not scale drawings.  
Check and verify all dimensions and information on the drawings and report all errors or omissions to the Consultant before proceeding with the work.  
This drawing shall not be reproduced in any manner, in part or in whole, for any project other than that for which it was prepared.  
This drawing, and all design concepts it contains, are an instrument of professional service and remain the property of Gerrits Engineering.

This drawing may have been reduced.  
0 5 10 20 30 40 50mm  
0' 1/4" 1/2" 1" 1 1/2" 2"

No.	Issuance Description	YYMMDD
1.	CLIENT REVIEW	2301/12
2.	SITE PLAN SUBMISSION	2302/24
3.	SITE PLAN APPROVAL	2305/15

Issued For:

SITE PLAN APPROVAL

Client

TAYJES HOLDING INC.

Project

221 MAPLEVIEW DRIVE, WEST  
DEVELOPMENT

Drawing:

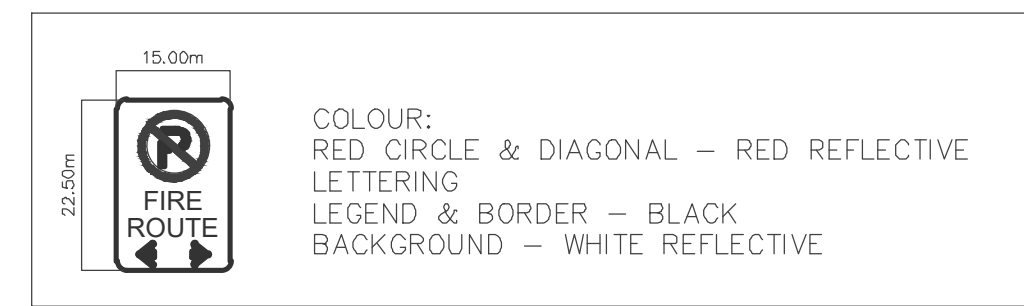
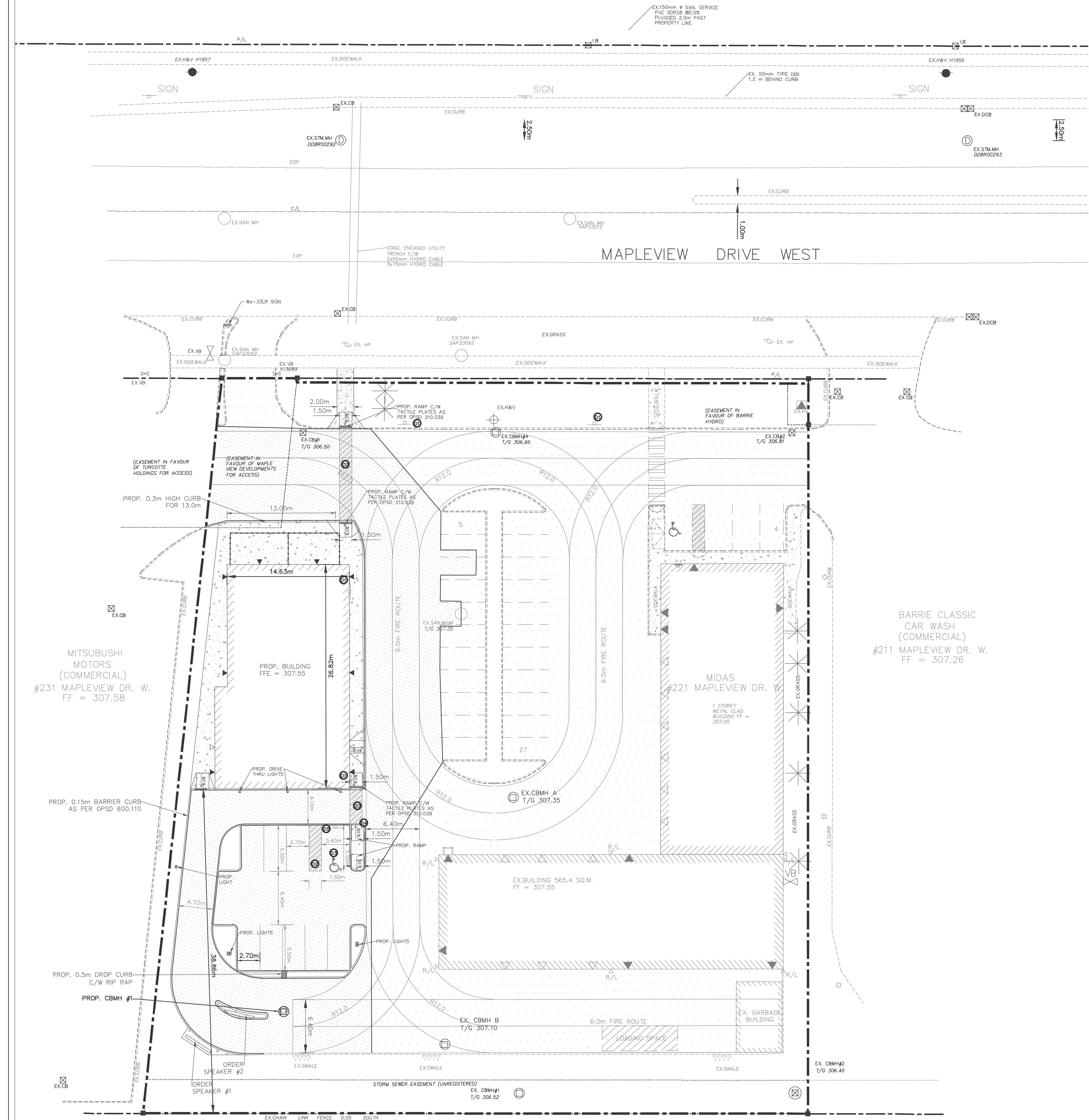
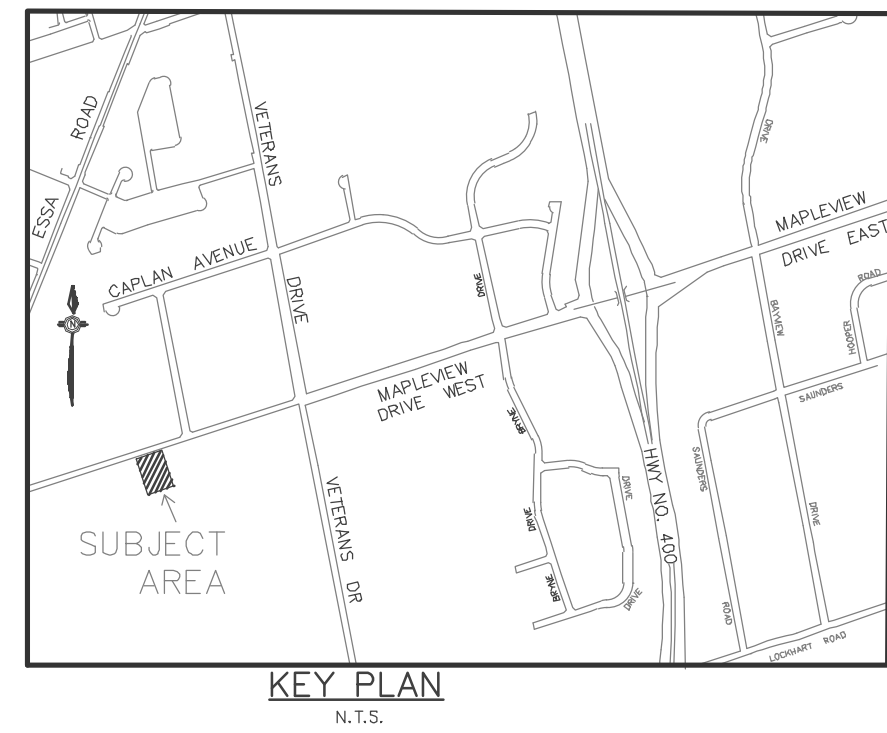
SITE GRADING PLAN

Project No.	1150-003	Designed by: MPO	Checked by: KJF
Scale:	1:250	Drawn by: MPO	Approved by: JDM
Orientation	Stamp		

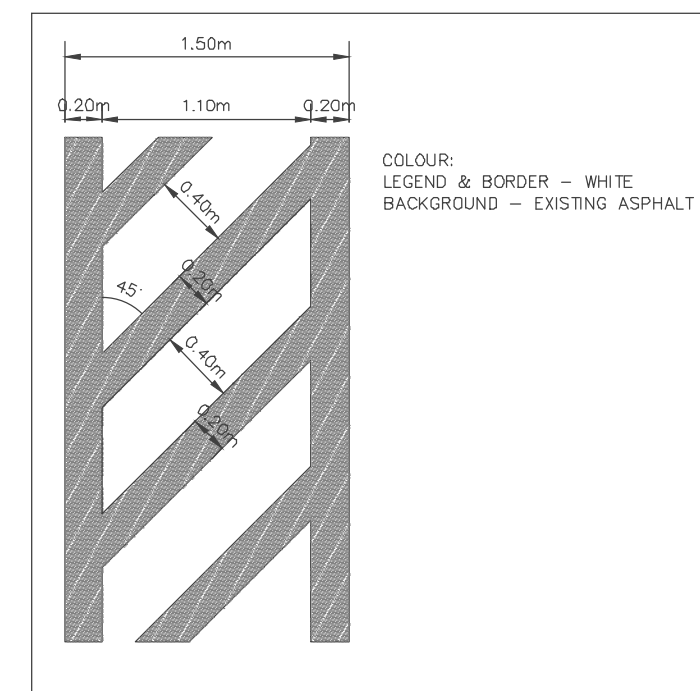


Drawing No.

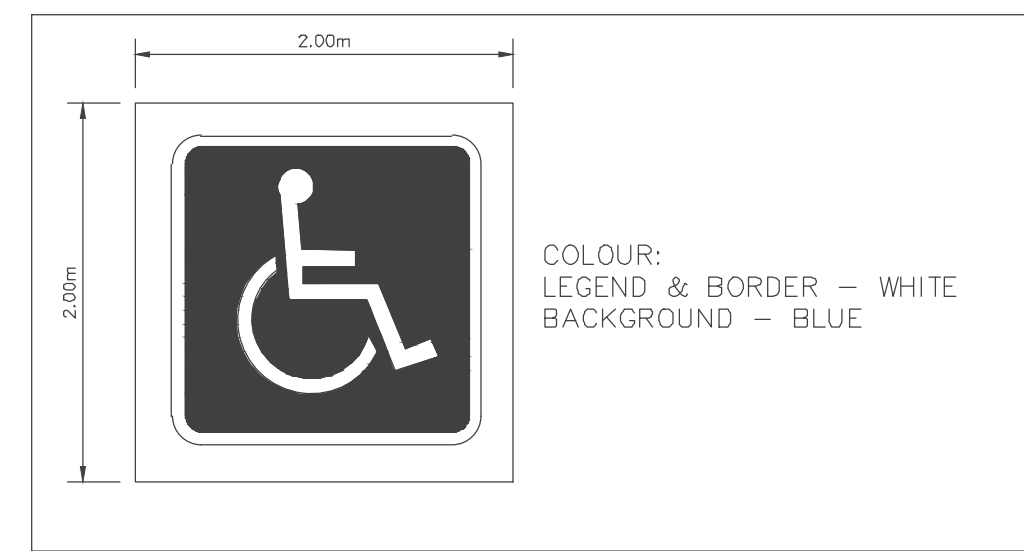
SG-1



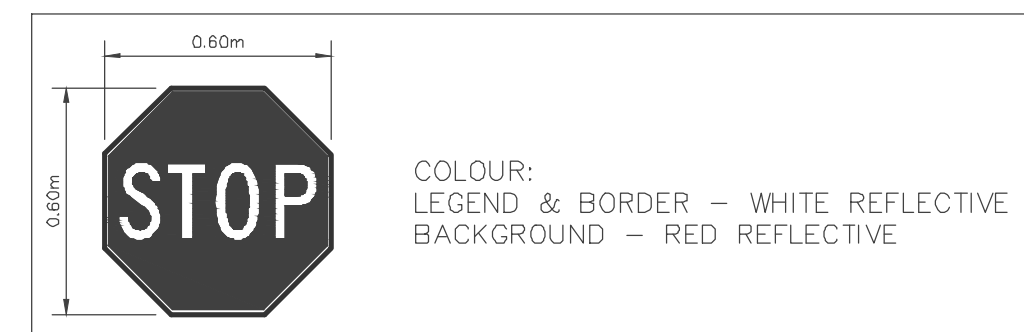
D1 FIRE ROUTE SIGN DETAIL  
N.T.S.



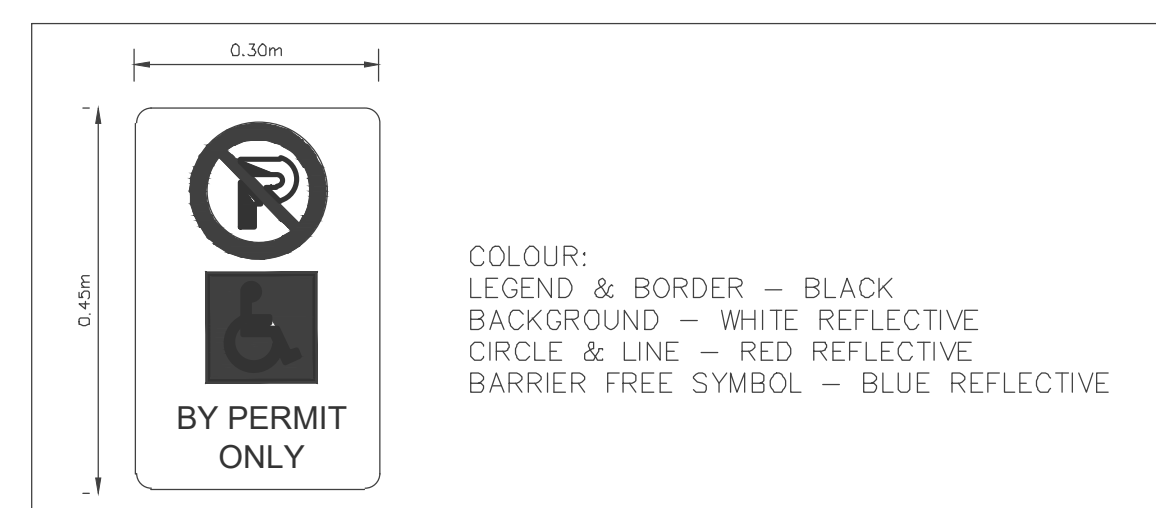
D2 ACCESSIBLE PARKING WALK DETAIL  
N.T.S.



D3 H.C. PAVEMENT MARKING DETAILS  
N.T.S.



D4 STOP SIGN DETAIL  
N.T.S.



D5 BARRIER FREE PARKING SIGN DETAIL RB-93  
N.T.S.

## 1. PAVEMENT MARKING NOTES

- \*\*\*ALL PAVEMENT MARKING PAINT TO BE ORGANIC SOLVENT BASED 2 COATS, AS PER OPSS 1714\*\*

**Gerrits**  
ENGINEERING

222 Mapleview Drive West, Suite 300  
Barrie, ON L4N 9E7 Canada  
Tel.: 705.737.3303  
Fax.: 705.737.1772  
www.gerrits.com

This drawing has been created electronically.  
Handwritten or manual revisions to the drawing are only valid when accompanied by the design engineer's initials.

Do not scale drawings.  
Check and verify all dimensions and information on the drawings and report all errors or omissions to the Consultant before proceeding with the work.  
This drawing shall not be reproduced in any manner, in part or in whole, for any project other than that for which it was prepared.  
This drawing, and all design concepts it contains, are an instrument of professional service and remain the property of Gerrits Engineering.

This drawing may have been reduced.  
0 5 10 20 30 40 50mm  
0" 1/4" 1/2" 1" 1 1/2" 2"

No.	Issuance Description	YY/MM/DD
1.	CLIENT REVIEW	23/01/12
2.	SITE PLAN SUBMISSION	23/02/24
3.	SITE PLAN APPROVAL	23/05/15

Issued For:

## SITE PLAN APPROVAL

Client

TAYJES HOLDING INC.

Project

221 MAPLEVIEW DRIVE, WEST DEVELOPMENT

Drawing:

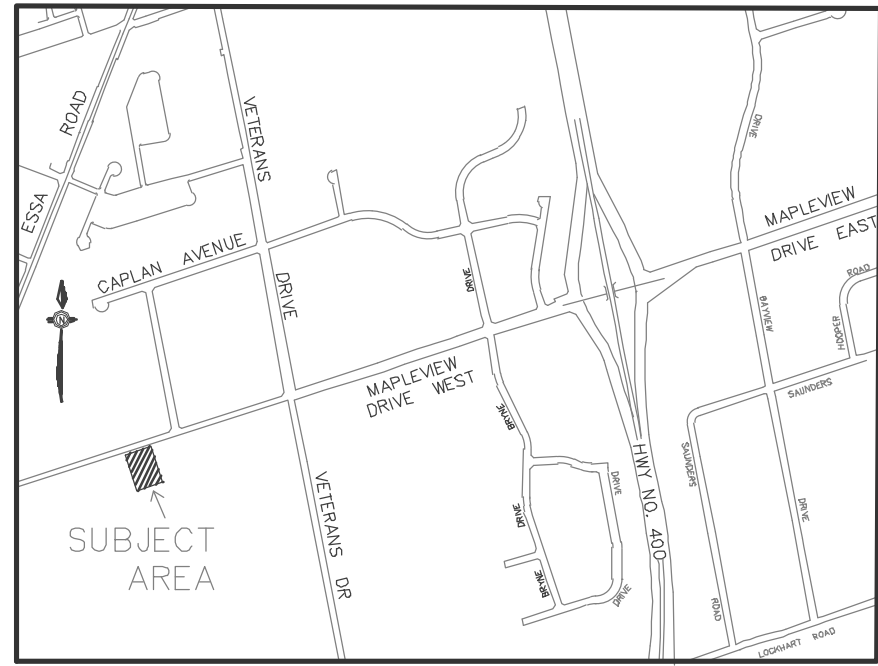
## PAVEMENT MARKINGS PLAN

Project No.	1150-003	Designed by:	MPO	Checked by:	KF
Scale:	1:250	Drawn by:	MPO	Approved by:	JDM
Orientation	Stamp				



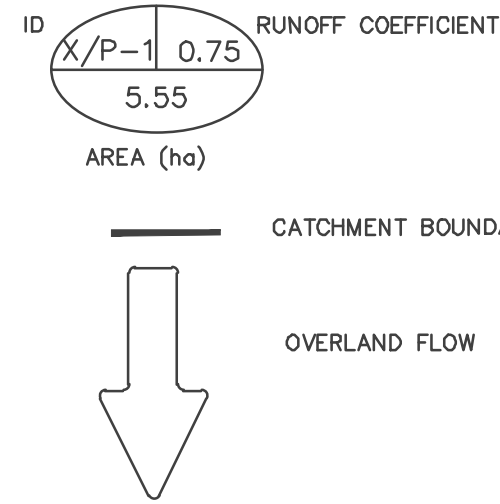
Drawing No.

PM-1



KEY PLAN  
N.T.S.

LEGEND



**Gerrits**  
ENGINEERING

222 Mapleview Drive West, Suite 300  
Barrie, ON L4N 9E7 Canada  
Tel.: 705.737.3303  
Fax.: 705.737.1772  
www.gerrits.com

This drawing has been created electronically.

Handwritten or manual revisions to the drawing are only valid when accompanied by the design engineer's initials.

Do not scale drawings.  
Check and verify all dimensions and information on the drawings and report all errors or omissions to the Consultant before proceeding with the work.  
This drawing shall not be reproduced in any manner, in part or in whole, for any project other than that for which it was prepared.  
This drawing, and all design concepts it contains, are an instrument of professional service and remain the property of Gerrits Engineering.

This drawing may have been reduced.  
0 5 10 20 30 40 50mm  
0" 1/4" 1/2" 1" 1 1/2" 2"

No.	Issuance Description	YY/MM/DD
1.	CLIENT REVIEW	23/01/12
2.	SITE PLAN SUBMISSION	23/02/24
3.	SITE PLAN APPROVAL	23/05/15

Issued For:

SITE PLAN APPROVAL

Client

TAYJES HOLDING INC.

Project

221 MAPLEVIEW DRIVE, WEST  
DEVELOPMENT

Drawing:

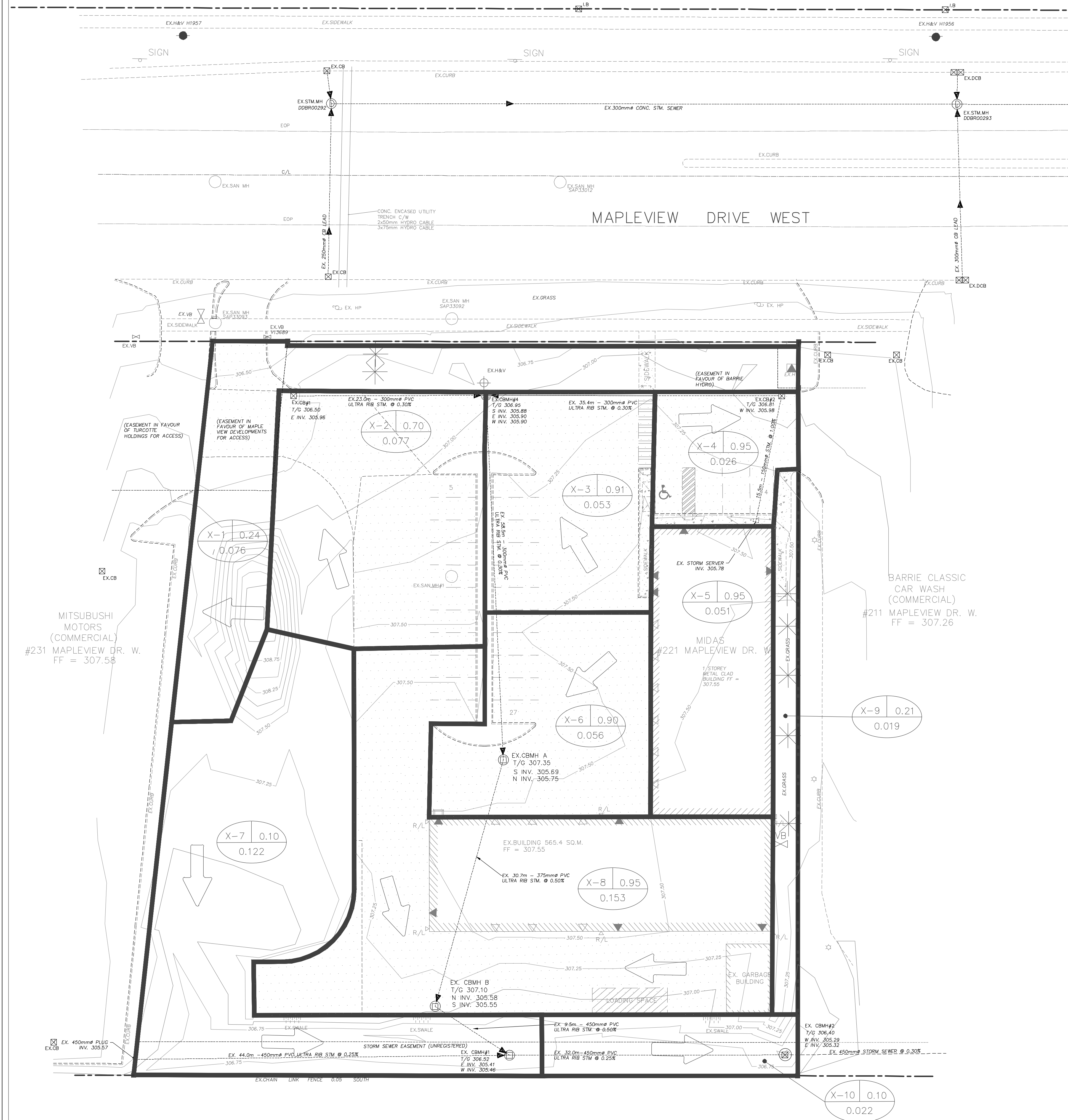
PRE-DEVELOPMENT  
STORMWATER  
DRAINAGE PLAN

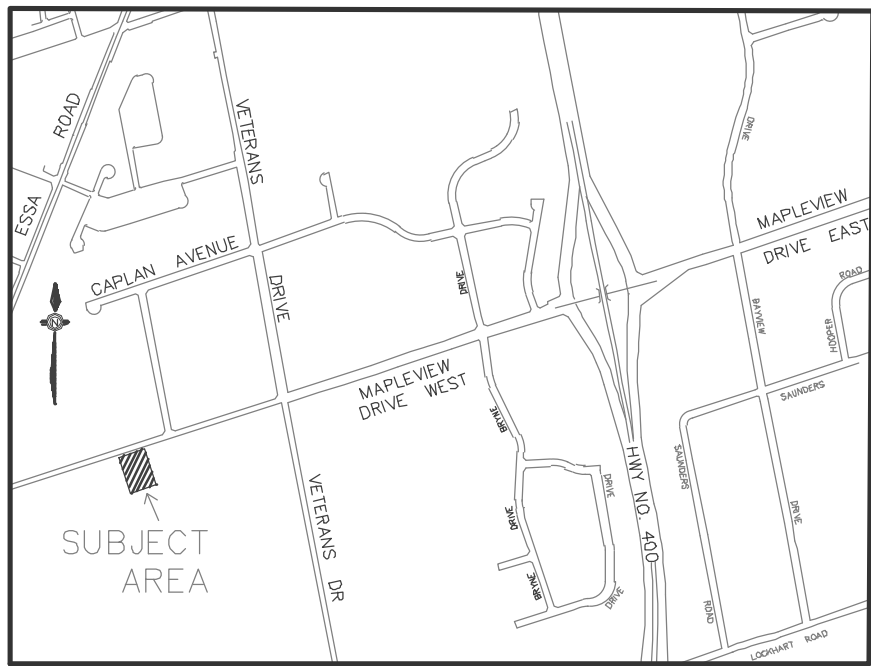
Project No.	1150-003	Designed by: MPO	Checked by: KF
Scale:	1:250	Drawn by: MPO	Approved by: JDM
Orientation	Stamp		



Drawing No.

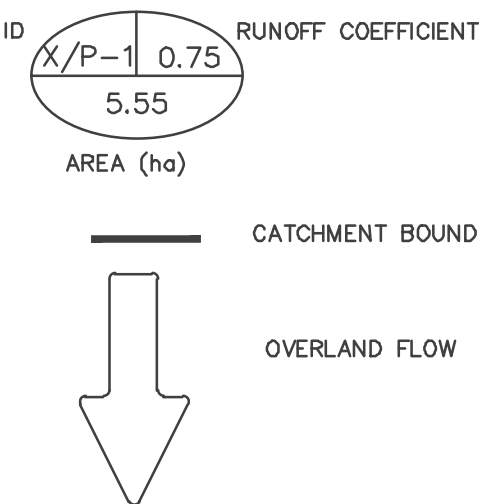
STM-1





KEY PLAN  
N.T.S.

LEGEND



**Gerrits**  
ENGINEERING

222 Mapleview Drive West, Suite 300  
Barrie, ON L4N 9E7 Canada  
Tel.: 705.737.3303  
Fax.: 705.737.1772  
www.gerrits.com

This drawing has been created electronically.

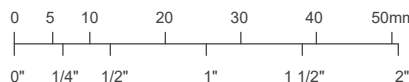
Handwritten or manual revisions to the drawing are only valid when accompanied by the design engineer's initials.

Do not scale drawings.

Check and verify all dimensions and information on the drawings and report all errors or omissions to the Consultant before proceeding with the work. This drawing shall not be reproduced in any manner, in part or in whole, for any project other than that for which it was prepared.

This drawing, and all design concepts it contains, are an instrument of professional service and remain the property of Gerrits Engineering.

This drawing may have been reduced.



No.	Issuance Description	YY/MM/DD
1.	CLIENT REVIEW	23/01/12
2.	SITE PLAN SUBMISSION	23/02/24
3.	SITE PLAN APPROVAL	23/05/15

Issued For:

SITE PLAN APPROVAL

Client

TAYJES HOLDING INC.

Project

221 MAPLEVIEW DRIVE, WEST  
DEVELOPMENT

Drawing:

POST DEVELOPMENT  
STORMWATER  
DRAINAGE PLAN

Project No.	1150-003	Designed by:	MPO	Checked by:	KF
Scale:	1:250	Drawn by:	MPO	Approved by:	JDM
Orientation	Stamp				



Drawing No.

STM-2

