

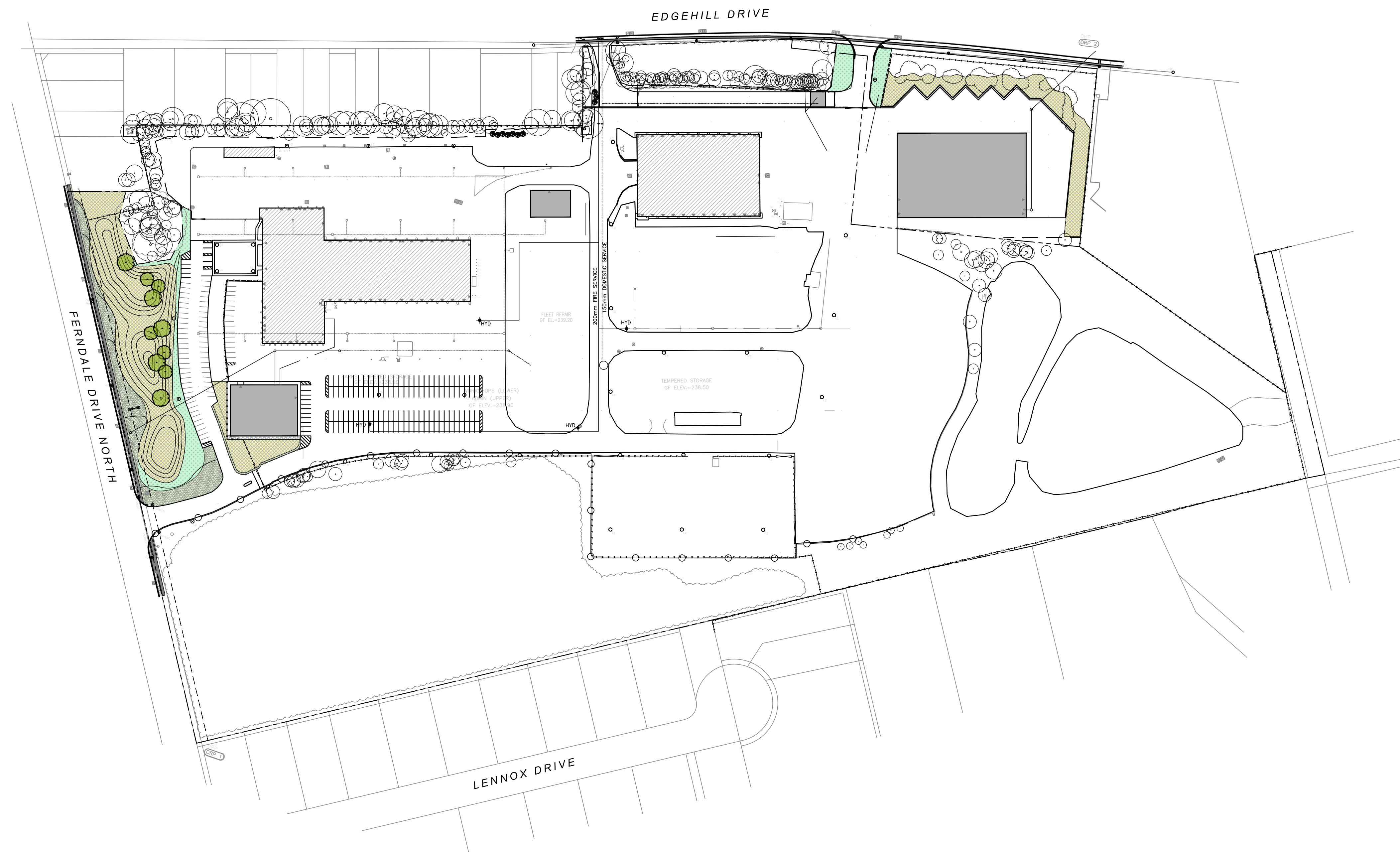
# BARRIE OPERATIONS CENTRE REDEVELOPMENT - PHASE 1

165 FERNDAL DRIVE NORTH, ON

CLIENT:  
CITY OF BARRIE

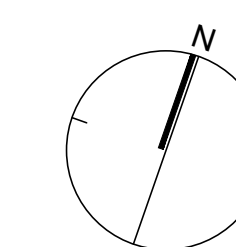
## LANDSCAPE DRAWINGS

ISSUED FOR 1ST SPA SUBMISSION  
JULY 25, 2023



**LIST OF DRAWINGS:**

SHEET NO.	SHEET NAME
L100	LANDSCAPE PLAN
L101	LANDSCAPE DETAIL PLAN
L102	LANDSCAPE DETAIL PLAN
L500	LANDSCAPE DETAILS



KEYMAP  
NTS

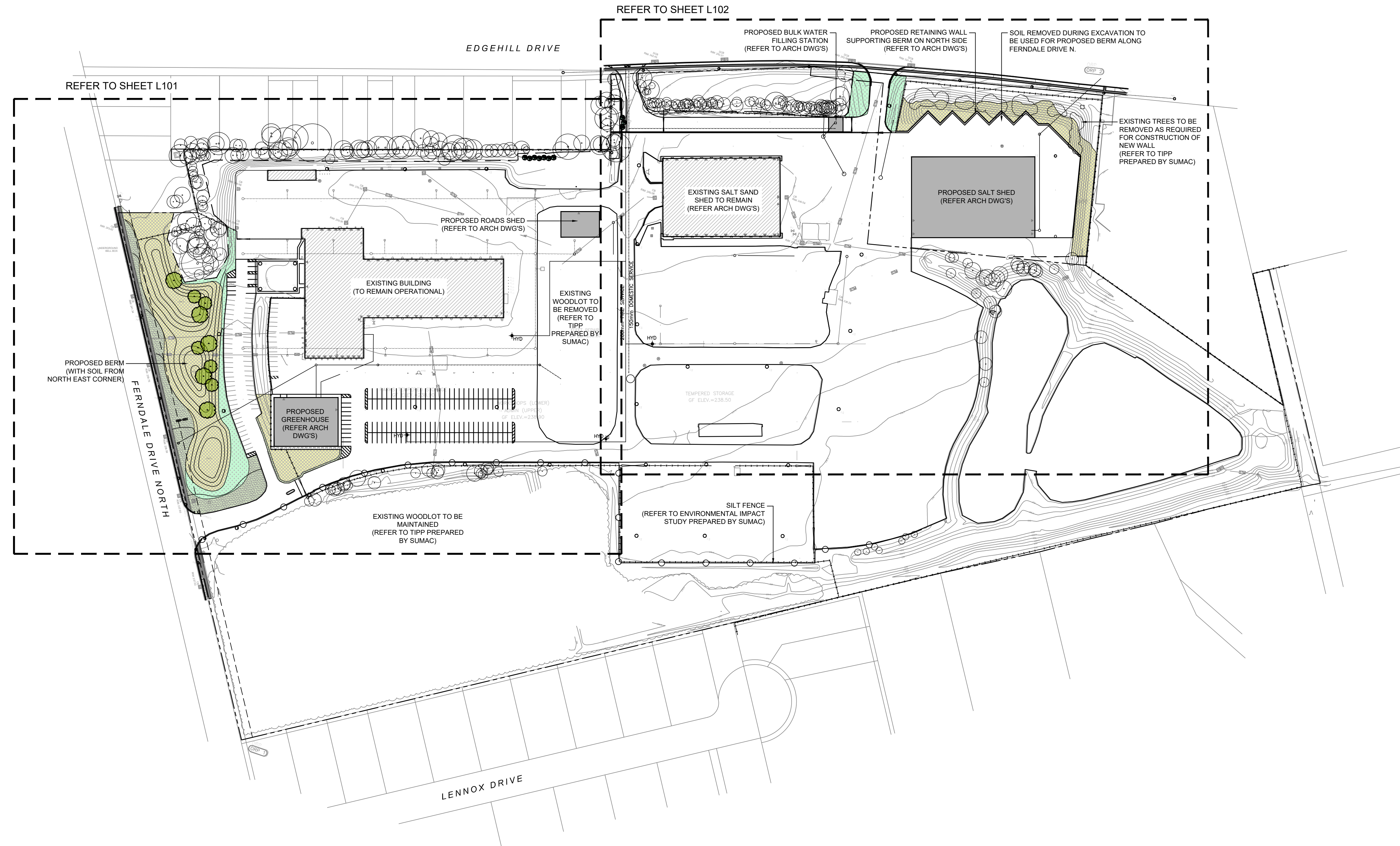
**NAK**  
design strategies

421 RONCESVALLES AVENUE, TORONTO, ON M6R 2N1 CANADA  
T 416.340.8700 F 416.340.7100 [NAKDESIGNSTRATEGIES.COM](http://NAKDESIGNSTRATEGIES.COM)

CONTRACTOR SHALL CHECK ALL DIMENSIONS ON THE WORK AND REPORT ANY DISCREPANCY TO THE LANDSCAPE ARCHITECT BEFORE PROCEEDING. ALL DRAWINGS AND SPECIFICATIONS ARE THE PROPERTY OF THE LANDSCAPE ARCHITECT AND MUST BE RETURNED AT THE COMPLETION OF THE WORK. THIS DRAWING IS NOT TO BE USED FOR CONSTRUCTION UNTIL SIGNED BY THE LANDSCAPE ARCHITECT.

KEY MAP

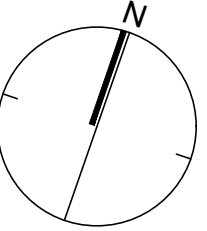
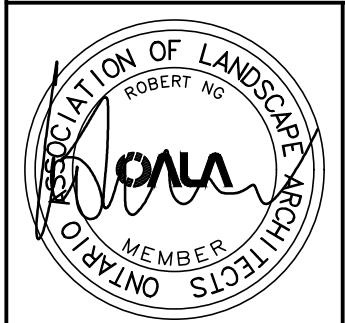
LEGEND



REVISIONS

No.	Description	Date
1	Issued for 1st SPA Submission	Jul. 25/23

CITY APPROVAL STAMP



421 RONCESVALLES AVENUE, TORONTO, ON M4R 2N1 CANADA  
T 416.340.8700 F 416.340.7100 [NAKDESIGNSTRATEGIES.COM](http://NAKDESIGNSTRATEGIES.COM)

**PROJECT**  
**BARRIE OPERATIONS CENTRE**  
**REDEVELOPMENT - STAGE 1**  
 165 Ferndale Drive N. Barrie, Ontario

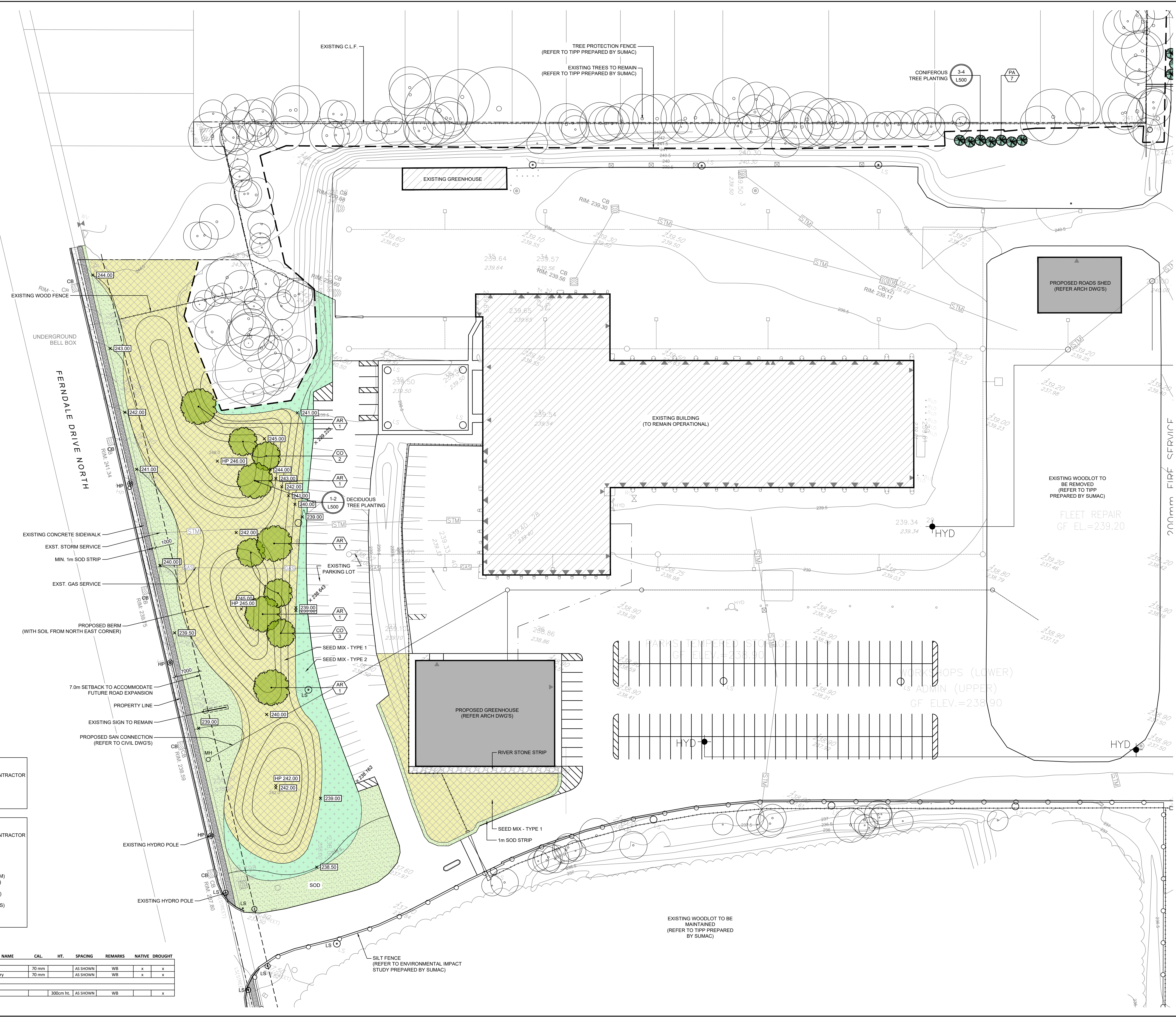
**OWNER**  
 City of Barrie

**TITLE**  
 LANDSCAPE PLAN

DATE: JULY 2023  
 SCALE: 1:1500  
 DRAWN: BL  
 CHECKED: RN  
 JOB NO.: 23-120

SHEET  
**L100**

NOTES:  
1. LOCATION OF BIRD BOXES AND BAT BOXES TO BE DETERMINED ON SITE AS PER SITE CONDITIONS.



**SEED MIX - TYPE 1**

APPLICATION METHOD: TERRASEEDING BY APPROVED CONTRACTOR

80%	RED FESCUE (FESTUCA RUBRA)
20%	CANADA WILD RYE (ELYMUS CANADENSIS)
100%	SEED RATE : 500g/180m <sup>2</sup> OR 25Kg/HA

**SEED MIX - TYPE 2**

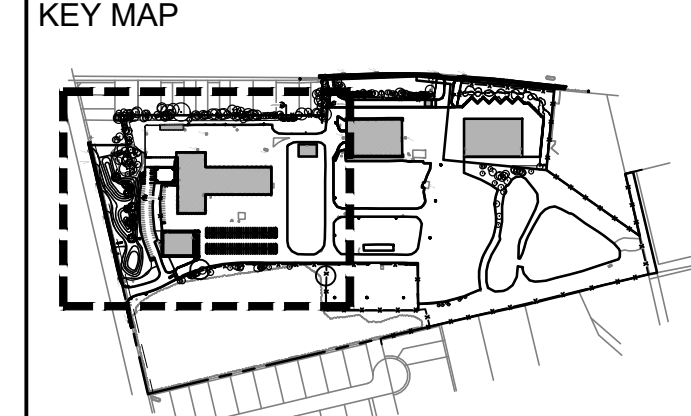
APPLICATION METHOD: TERRASEEDING BY APPROVED CONTRACTOR  
SIMCOE COUNTY NATIVE SEED MIXTURE - 6850  
BY ONTARIO SEED COMPANY

12%	BLACK EYED SUSAN (RUDBECKIA HIRTA)
20%	CANADA WILD RYE (ELYMUS CANADENSIS)
20%	INDIANGRASS (SORGHASTRUM NUTANS)
20%	LITTLE BLUESTEM (SCHIZACHYRIUM SCOPARIUM)
15%	NEW ENGLAND ASTER (ASTER NOVAE-ANGLIAE)
1%	WILD BERGAMOT (MONARDA FISTULOSA)
4%	CANADA GOLDENROD (SOLIDAGO CANADENSIS)
5%	COMMON MILKWEED (ASCLEPIAS SYRACA)
20%	SAND DROSEED (SPOROBOLOUS CRYPTANDRUS)
1%	SMOOTH BLUE ASTER (ASTER LAEVIS)
100%	SEED RATE : 500g/180m <sup>2</sup> OR 25Kg/HA

**Plant Schedule**

KEY	QTY	BOTANICAL NAME	COMMON NAME	CAL.	HT.	SPACING	REMARKS	NATIVE	DROUGHT
<b>Deciduous Trees</b>									
AR	5	Acer rubrum	Red maple	70 mm		AS SHOWN	WB	x	x
CD	5	Celtis occidentalis	Common Hackberry	70 mm		AS SHOWN	WB	x	x
<b>Coniferous Trees</b>									
PA	10	Picea abies	Norway Spruce		300cm ht.	AS SHOWN	WB		x

CONTRACTOR SHALL CHECK ALL DIMENSIONS ON THE WORK AND REPORT ANY DISCREPANCY TO THE LANDSCAPE ARCHITECT BEFORE PROCEEDING. ALL DRAWINGS AND SPECIFICATIONS ARE THE PROPERTY OF THE LANDSCAPE ARCHITECT AND MUST BE RETURNED AT THE COMPLETION OF THE WORK. THIS DRAWING IS NOT TO BE USED FOR CONSTRUCTION UNTIL SIGNED BY THE LANDSCAPE ARCHITECT.



- LEGEND**
- PROPERTY LINE
  - SETBACK TO ACCOMMODATE FUTURE ROAD EXPANSION
  - TREE PROTECTION FENCE
  - SILT FENCE
- PLANTING**
- EXISTING TREE TO REMAIN (REFER TO TIPP PREPARED BY SUMAC FOR)
  - PROPOSED DECIDUOUS TREE
  - PROPOSED CONIFEROUS TREE
  - SEED MIX - TYPE 1
  - SEED MIX - TYPE 2
  - EXISTING SOD TO REMAIN
  - PROPOSED SOD
- PAVING**
- EXISTING CONCRETE SIDEWALK TO REMAIN

- DETAIL KEY**
- 1 - DETAIL #
  - L400 - DETAIL #
- PLANTING KEYS**
- XX - TREE SPECIES QTY.
  - XX - SHRUB/PERENNIAL SPECIES QTY.
- UTILITIES**
- SL - STREET LIGHT
  - HP - HYDRO POLE
  - CB - CATCH BASIN
  - MH - MAN HOLE
- GRADING**
- +680.00 - EXST. GRADE
  - x [239.00] - PROP. GRADE

**REVISIONS**

No.	Description	Date
1	Issued for 1st SPA Submission	Jul. 25/23

**CITY APPROVAL STAMP**

**NAK design strategies**

421 RONCESVALLES AVENUE, TORONTO, ON M4R 2N1 CANADA  
T 416.340.8700 F 416.340.7100 [NAKDESIGNSTRATEGIES.COM](http://NAKDESIGNSTRATEGIES.COM)

**PROJECT**  
BARRIE OPERATIONS CENTRE REDEVELOPMENT - STAGE 1  
165 Ferridale Drive N. Barrie, Ontario

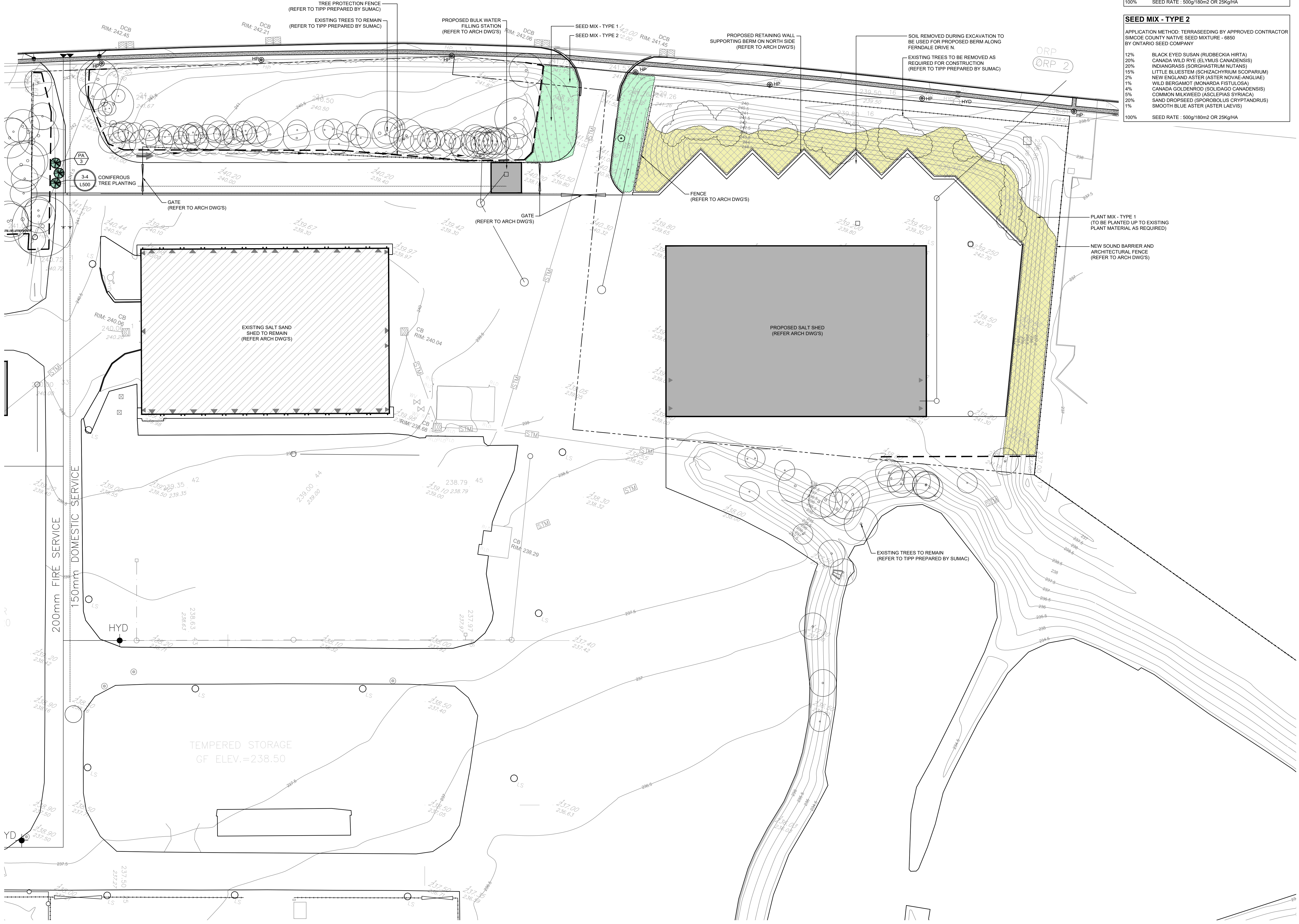
**OWNER**  
City of Barrie

**TITLE**  
LANDSCAPE DETAIL PLAN

**DATE:** JULY 2023  
**SCALE:** 1:500  
**DRAWN:** BL  
**CHECKED:** RN  
**JOB NO.:** 23-120

**SHEET**  
**L101**

- NOTES:
1. LOCATION OF BIRD BOXES AND BAT BOXES TO BE DETERMINED ON SITE AS PER SITE CONDITIONS.
  2. REFER TO L101 FOR TREE PLANTING SCHEDULE.



**SEED MIX - TYPE 1**

APPLICATION METHOD: TERRASEEDING BY APPROVED CONTRACTOR

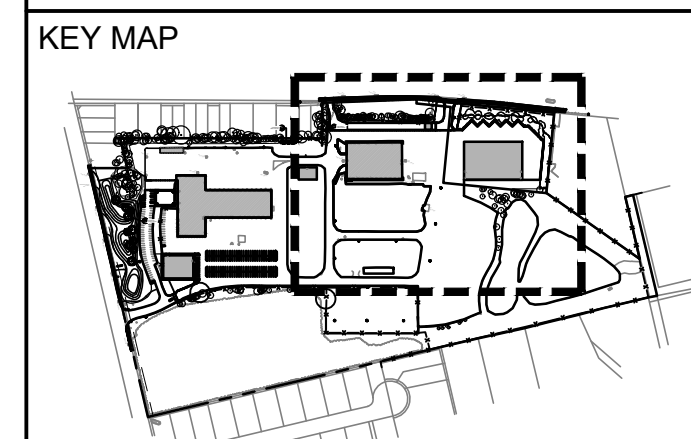
80%	RED FESCUE (FESTUCA RUBRA)
20%	CANADA WILD RYE (ELYMUS CANADENSIS)
100%	SEED RATE : 500g/180m <sup>2</sup> OR 25Kg/HA

**SEED MIX - TYPE 2**

APPLICATION METHOD: TERRASEEDING BY APPROVED CONTRACTOR  
SIMCOE COUNTY NATIVE SEED MIXTURE - 6850  
BY ONTARIO SEED COMPANY

12%	BLACK EYED SUSAN (RUDBECKIA HIRTA)
20%	CANADA WILD RYE (ELYMUS CANADENSIS)
20%	INDIANGRASS (SORGHASTRUM NUTANS)
15%	LITTLE BLUESTEM (SCHIZACHYRIUM SCOPARIUM)
2%	NEW ENGLAND ASTER (ASTER NOVAE-ANGLIAE)
1%	WILD BERGAMOT (MONARDA FISTULOSA)
4%	CANADA GOLDENROD (SOLIDAGO CANADENSIS)
5%	COMMON MILKWEED (ASCLEPIAS SYRIACA)
20%	SAND DROPSIDE (SPOROBOLUS CRYPTANDRUS)
1%	SMOOTH BLUE ASTER (ASTER LAEVIS)
100%	SEED RATE : 500g/180m <sup>2</sup> OR 25Kg/HA



**LEGEND**

- PROPERTY LINE
- SETBACK TO ACCOMMODATE FUTURE ROAD EXPANSION
- TREE PROTECTION FENCE
- SILT FENCE

**PLANTING**

- EXISTING TREE TO REMAIN (REFER TO TIPP PREPARED BY SUMAC FOR)
- PROPOSED DECIDUOUS TREE
- PROPOSED CONIFEROUS TREE
- SEED MIX - TYPE 1
- SEED MIX - TYPE 2
- EXISTING SOD TO REMAIN
- PROPOSED SOD

**PAVING**

- EXISTING CONCRETE SIDEWALK TO REMAIN

**DETAIL KEY**

1 - DETAIL #  
L400 - DETAIL #

**PLANTING KEYS**

XX/00 - TREE SPECIES QTY.  
XX/00 - SHRUB/PERENNIAL SPECIES QTY.

**UTILITIES**

- SL - STREET LIGHT
- HP - HYDRO POLE
- CB - CATCH BASIN
- MH - MAN HOLE

**GRADING**

+0.00 - EXST. GRADE  
x [239.00] - PROP. GRADE

**REVISIONS**

No.	Description	Date
1	Issued for 1st SPA Submission	Jul. 25/23

**CITY APPROVAL STAMP**

**NAK design strategies**

421 RONCESVALLES AVENUE, TORONTO, ON M4R 2N1 CANADA  
T 416.340.8700 F 416.340.7100 [NAKDESIGNSTRATEGIES.COM](http://NAKDESIGNSTRATEGIES.COM)

**PROJECT**

**BARRIE OPERATIONS CENTRE REDEVELOPMENT - STAGE 1**  
165 Ferndale Drive N. Barrie, Ontario

**OWNER**

City of Barrie

**TITLE**

LANDSCAPE DETAIL PLAN

**DATE:** JULY 2023 **SHEET**

**SCALE:** 1:500

**DRAWN:** BL

**CHECKED:** RN

**JOB NO.:** 23-120

**L102**

CONTRACTOR SHALL CHECK ALL DIMENSIONS ON THE WORK AND REPORT ANY DISCREPANCY TO THE LANDSCAPE ARCHITECT BEFORE PROCEEDING. ALL DRAWINGS AND SPECIFICATIONS ARE THE PROPERTY OF THE LANDSCAPE ARCHITECT AND MUST BE RETURNED AT THE COMPLETION OF THE WORK. THIS DRAWING IS NOT TO BE USED FOR CONSTRUCTION UNTIL SIGNED BY THE LANDSCAPE ARCHITECT.

KEY MAP

LEGEND

DO NOT PRUNE LEADERS, TREES WITH DAMAGED OR MISSING LEADERS WILL NOT BE ACCEPTED

TREE CROWN NOTES:

- REMOVE AT TIME OF PLANTING ANY DEAD, BROKEN OR DAMAGED LIMBS INCLUDING INTERFERING BRANCHES, DOUBLE LEADERS AND NARROW BRANCH UNIONS
- REMOVE ALL LABELS AND TAGS AT TIME OF PLANTING
- TREES ARE TO BE PLANTED PLUM AND HAVE BOTH FULL FORM AND HEALTHY CANOPY STRUCTURE. ANY TREES WHICH DO NOT MEET THIS CRITERIA AND/OR HAVE WEAK BRANCHING STRUCTURE, DO NOT HAVE STRAIGHT TRUNKS OR HAVE UNBALANCED CROWNS WILL NOT BE ACCEPTED

TREES ARE TO BE STAKED WITH (2) TWO SOFTWOOD STAKES (38x38x2000mm) EXTENDING 300mm INTO FIRM GROUND AT AN ANGLE AND SECURED VERTICALLY PRIOR TO BACKFILLING THE TREE PIT. SECURE USING #12 GAUGE GALVANIZED WIRE ENCASED IN 12mm DIAMETER REINFORCED RUBBER HOSE (ENSURING WIRE ENDS DO NOT PROTRUDE) OR APPROVED EQUIVALENT. STAKING HARDWARE TO BE REMOVED AFTER ONE GROWING SEASON

BURLAP WRAP TREE FROM TOP OF ROOT BALL TO FIRST BRANCH UNION AND SECURE WITH BIODEGRADABLE TIES. REMOVE AFTER ONE GROWING SEASON

KEEP MULCH 50-100mm AWAY FROM TRUNK

FORM A 100mm HIGH EARTH SAUCER BEYOND THE EDGE OF THE ROOT BALL AND COVER WITH 100mm OF SHREDDED CEDAR MULCH

LOOSEN OR SCARIFY THE INSIDE SURFACE OF THE PLANTING HOLE PRIOR TO INSTALLATION OF THE TREE

IMPORTED FRAGILE SCREENED LOAM TOPSOIL COMPACTED TO ELIMINATE AIR POCKETS

PLACE ROOT BALL ON UNEXCAVATED OR TAMPED SOIL

- ALL CALIPER TREE PLANTING SHALL HAVE A MINIMUM 600mm DIAMETER ROOT BALL
- CUT AND REMOVE ALL WIRE, ROPE AND BURLAP FROM THE TOP 150mm OF THE ROOT BALL AT THE TIME OF PLANTING
- FOR POORLY DRAINAGE OR COMPACTED SOILS THE ROOT BALL SHALL BE PLACED SO THAT THE ROOT COLLAR IS A MAXIMUM OF 100mm ABOVE THE FINISHED GRADE. FOR ALL OTHER INSTALLATIONS THE ROOT COLLAR SHALL BE AT OR 50mm ABOVE FINISHED GRADE
- ALL TREES WITHIN 3.0m OF A SIDEWALK OR DRIVEWAY MUST ALSO HAVE A COORDINATED INSTALLATION OF AN APPROVED ROOT BARRIER INSTALLED IN ADDITION TO THE TREE FOR ALL STREETSCAPE APPLICATIONS
- ALL TWINE AND BURLAP MUST BE BIODEGRADABLE (UNTRATED)
- ALL DIMENSIONS ARE IN MILLIMETRES UNLESS OTHERWISE NOTED

Barrie DECIDUOUS TREE PLANTING REV No. 5 DATE: APR 2023 SCALE: N.T.S. P1310

DO NOT PRUNE LEADERS, TREES WITH DAMAGED OR MISSING LEADERS WILL NOT BE ACCEPTED

TREE CROWN NOTES:

- REMOVE AT TIME OF PLANTING ANY DEAD, BROKEN OR DAMAGED LIMBS INCLUDING INTERFERING BRANCHES, DOUBLE LEADERS AND NARROW BRANCH UNIONS
- REMOVE ALL LABELS AND TAGS AT TIME OF PLANTING
- TREES ARE TO BE PLANTED PLUM AND HAVE BOTH FULL FORM AND HEALTHY CANOPY STRUCTURE. ANY TREES WHICH DO NOT MEET THIS CRITERIA AND/OR HAVE WEAK BRANCHING STRUCTURE, DO NOT HAVE STRAIGHT TRUNKS OR HAVE UNBALANCED CROWNS WILL NOT BE ACCEPTED

TREES ARE TO BE STAKED WITH (2) TWO SOFTWOOD STAKES (38x38x2000mm) EXTENDING 300mm INTO FIRM GROUND AT AN ANGLE AND SECURED VERTICALLY PRIOR TO BACKFILLING THE TREE PIT. SECURE USING #12 GAUGE GALVANIZED WIRE ENCASED IN 12mm DIAMETER REINFORCED RUBBER HOSE (ENSURING WIRE ENDS DO NOT PROTRUDE) OR APPROVED EQUIVALENT. STAKING HARDWARE TO BE REMOVED AFTER ONE GROWING SEASON

BURLAP WRAP TREE FROM TOP OF ROOT BALL TO FIRST BRANCH UNION AND SECURE WITH BIODEGRADABLE TIES. REMOVE AFTER ONE GROWING SEASON

KEEP MULCH 50-100mm AWAY FROM TRUNK

FORM A 100mm HIGH EARTH SAUCER BEYOND THE EDGE OF THE ROOT BALL AND COVER WITH 100mm OF SHREDDED CEDAR MULCH

LOOSEN OR SCARIFY THE INSIDE SURFACE OF THE PLANTING HOLE PRIOR TO INSTALLATION OF THE TREE

IMPORTED FRAGILE SCREENED LOAM TOPSOIL COMPACTED TO ELIMINATE AIR POCKETS

PLACE ROOT BALL ON UNEXCAVATED OR TAMPED SOIL

- ALL CALIPER TREE PLANTING SHALL HAVE A MINIMUM 600mm DIAMETER ROOT BALL
- CUT AND REMOVE ALL WIRE, ROPE AND BURLAP FROM THE TOP 150mm OF THE ROOT BALL AT THE TIME OF PLANTING
- EXCAVATION TO BE BACKFILLED WITH IMPORTED FRAGILE SCREENED TOPSOIL WHICH IS TO BE FIRMLY COMPACTED TO ELIMINATE AIR POCKETS AND PREVENT SETTLEMENT
- EXPOSED SOIL SHALL BE RE-SEEDDED OR IN A RESTORATION ENVIRONMENT SEEDED WITH A SIMCOE COUNTY NATIVE SEED MIX AND ANNUAL RYE NURSE CROP
- ALL TWINE AND BURLAP MUST BE BIODEGRADABLE (UNTRATED)
- ALL DIMENSIONS ARE IN MILLIMETRES UNLESS OTHERWISE NOTED

Barrie DECIDUOUS TREE SLOPE PLANTING REV No. 2 DATE: APR 2023 SCALE: N.T.S. P1311

DO NOT PRUNE LEADERS, TREES WITH DAMAGED OR MISSING LEADERS WILL NOT BE ACCEPTED

TREE CROWN NOTES:

- REMOVE AT TIME OF PLANTING ANY DEAD, BROKEN OR DAMAGED LIMBS INCLUDING INTERFERING BRANCHES, DOUBLE LEADERS AND NARROW BRANCH UNIONS
- REMOVE ALL LABELS AND TAGS AT TIME OF PLANTING
- BINDING AND TIES MUST BE REMOVED IMMEDIATELY FOLLOWING THE INSTALLATION OF THE TREE
- TREE HEIGHT IS MEASURED FROM THE FIRST WHORL AND NOT THE TOP OF LEADER
- TREES ARE TO BE PLANTED PLUM AND HAVE BOTH FULL FORM AND HEALTHY CANOPY STRUCTURE. ANY TREES WHICH DO NOT MEET THIS CRITERIA AND/OR HAVE WEAK BRANCHING STRUCTURE, DO NOT HAVE STRAIGHT TRUNKS OR HAVE UNBALANCED CROWNS WILL NOT BE ACCEPTED

TREES ARE TO BE STAKED WITH (2) TWO SOFTWOOD STAKES (38x38x2000mm) EXTENDING 300mm INTO FIRM GROUND AT AN ANGLE AND SECURED VERTICALLY PRIOR TO BACKFILLING THE TREE PIT. SECURE USING #12 GAUGE GALVANIZED WIRE ENCASED IN 12mm DIAMETER REINFORCED RUBBER HOSE (ENSURING WIRE ENDS DO NOT PROTRUDE) OR APPROVED EQUIVALENT. STAKING HARDWARE TO BE REMOVED AFTER ONE GROWING SEASON

BURLAP WRAP TREE FROM TOP OF ROOT BALL TO FIRST BRANCH UNION AND SECURE WITH BIODEGRADABLE TIES. REMOVE AFTER ONE GROWING SEASON

KEEP MULCH 50-100mm AWAY FROM TRUNK

FORM A 100mm HIGH EARTH SAUCER BEYOND THE EDGE OF THE ROOT BALL AND COVER WITH 100mm OF SHREDDED CEDAR MULCH

LOOSEN OR SCARIFY THE INSIDE SURFACE OF THE PLANTING HOLE PRIOR TO INSTALLATION OF THE TREE

IMPORTED FRAGILE SCREENED LOAM TOPSOIL COMPACTED TO ELIMINATE AIR POCKETS

PLACE ROOT BALL ON UNEXCAVATED OR TAMPED SOIL

- ALL CONIFEROUS TREE PLANTING SHALL HAVE A MINIMUM 600mm DIAMETER ROOT BALL
- CUT AND REMOVE ALL WIRE, ROPE AND BURLAP FROM THE TOP 150mm OF THE ROOT BALL AT THE TIME OF PLANTING
- FOR POORLY DRAINAGE OR COMPACTED SOILS THE ROOT BALL SHALL BE PLACED SO THAT THE ROOT COLLAR IS A MAXIMUM OF 100mm ABOVE THE FINISHED GRADE. FOR ALL OTHER INSTALLATIONS THE ROOT COLLAR SHALL BE AT OR 50mm ABOVE FINISHED GRADE
- EXPOSED SOIL SHALL BE RE-SEEDDED OR IN A RESTORATION ENVIRONMENT SEEDED WITH A SIMCOE COUNTY NATIVE SEED MIX AND ANNUAL RYE NURSE CROP
- ALL TWINE AND BURLAP MUST BE BIODEGRADABLE (UNTRATED)
- ALL DIMENSIONS ARE IN MILLIMETRES UNLESS OTHERWISE NOTED

Barrie CONIFEROUS TREE PLANTING REV No. 5 DATE: APR 2023 SCALE: N.T.S. P1312

DO NOT PRUNE LEADERS, TREES WITH DAMAGED OR MISSING LEADERS WILL NOT BE ACCEPTED

TREE CROWN NOTES:

- REMOVE AT TIME OF PLANTING ANY DEAD, BROKEN OR DAMAGED LIMBS INCLUDING INTERFERING BRANCHES, DOUBLE LEADERS AND NARROW BRANCH UNIONS
- REMOVE ALL LABELS AND TAGS AT TIME OF PLANTING
- BINDING AND TIES MUST BE REMOVED IMMEDIATELY FOLLOWING THE INSTALLATION OF THE TREE
- TREE HEIGHT IS MEASURED FROM THE FIRST WHORL AND NOT THE TOP OF LEADER
- TREES ARE TO BE PLANTED PLUM AND HAVE BOTH FULL FORM AND HEALTHY CANOPY STRUCTURE. ANY TREES WHICH DO NOT MEET THIS CRITERIA AND/OR HAVE WEAK BRANCHING STRUCTURE, DO NOT HAVE STRAIGHT TRUNKS OR HAVE UNBALANCED CROWNS WILL NOT BE ACCEPTED

TREES ARE TO BE STAKED WITH (2) TWO SOFTWOOD STAKES (38x38x2000mm) EXTENDING 300mm INTO FIRM GROUND AT AN ANGLE AND SECURED VERTICALLY PRIOR TO BACKFILLING THE TREE PIT. SECURE USING #12 GAUGE GALVANIZED WIRE ENCASED IN 12mm DIAMETER REINFORCED RUBBER HOSE (ENSURING WIRE ENDS DO NOT PROTRUDE) OR APPROVED EQUIVALENT. STAKING HARDWARE TO BE REMOVED AFTER ONE GROWING SEASON

BURLAP WRAP TREE FROM TOP OF ROOT BALL TO FIRST BRANCH UNION AND SECURE WITH BIODEGRADABLE TIES. REMOVE AFTER ONE GROWING SEASON

KEEP MULCH 50-100mm AWAY FROM TRUNK

FORM A 100mm HIGH EARTH SAUCER BEYOND THE EDGE OF THE ROOT BALL AND COVER WITH 100mm OF SHREDDED CEDAR MULCH

LOOSEN OR SCARIFY THE INSIDE SURFACE OF THE PLANTING HOLE PRIOR TO INSTALLATION OF THE TREE

IMPORTED FRAGILE SCREENED LOAM TOPSOIL COMPACTED TO ELIMINATE AIR POCKETS

PLACE ROOT BALL ON UNEXCAVATED OR TAMPED SOIL

- ALL CONIFEROUS TREE PLANTING SHALL HAVE A MINIMUM 600mm DIAMETER ROOT BALL
- CUT AND REMOVE ALL WIRE, ROPE AND BURLAP FROM THE TOP 150mm OF THE ROOT BALL AT THE TIME OF PLANTING
- EXCAVATION TO BE BACKFILLED WITH IMPORTED FRAGILE SCREENED TOPSOIL WHICH IS TO BE FIRMLY COMPACTED TO ELIMINATE AIR POCKETS AND PREVENT SETTLEMENT
- EXPOSED SOIL SHALL BE RE-SEEDDED OR IN A RESTORATION ENVIRONMENT SEEDED WITH A SIMCOE COUNTY NATIVE SEED MIX AND ANNUAL RYE NURSE CROP
- ALL TWINE AND BURLAP MUST BE BIODEGRADABLE (UNTRATED)
- ALL DIMENSIONS ARE IN MILLIMETRES UNLESS OTHERWISE NOTED

Barrie CONIFEROUS TREE SLOPE PLANTING REV No. 2 DATE: APR 2023 SCALE: N.T.S. P1313

1 DECIDUOUS TREE PLANTING N.T.S.

2 DECIDUOUS TREE SLOPE PLANTING N.T.S.

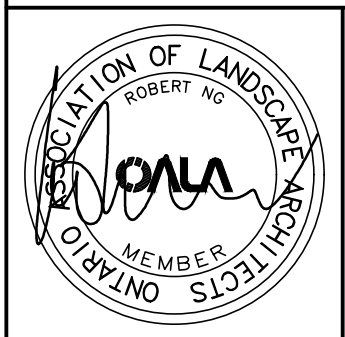
3 CONIFEROUS TREE PLANTING N.T.S.

4 CONIFEROUS TREE SLOPE PLANTING N.T.S.

REVISIONS

No.	Description	Date
1	Issued for 1st SPA Submission	Jul. 25/23

CITY APPROVAL STAMP



421 RONCEVALES AVENUE, TORONTO, ON M4R 2N1 CANADA  
T 416.340.8700 F 416.340.7100 NAKDESIGNSTRATEGIES.COM

PROJECT  
BARRIE OPERATIONS CENTRE  
REDEVELOPMENT - STAGE 1  
165 Ferndale Drive N. Barrie, Ontario

OWNER  
City of Barrie

TITLE  
LANDSCAPE DETAILS

DATE: JULY 2023 SHEET  
SCALE: AS SHOWN  
DRAWN: BL  
CHECKED: RN  
JOB NO.: 23-120  
**L500**

SPACING DISTANCES

	LARGE TREE	SMALL TREE
MINIMUM DISTANCE BETWEEN TREES	9000	6000

SETBACK DISTANCES

	LARGE TREE	SMALL TREE
FROM EDGE OF SIDEWALK	1500	1000
FROM EDGE OF DRIVEWAY	2000	2000
BELOW GRADE UTILITIES	1000	1000
TRANSFORMERS	1500	1500
BACK EDGE OF CURB	2000	1000
FIRE HYDRANT	3000	3000
STREET LIGHT	6000	3000
CORNER SIDE YARD **	10000	10000
CORNER FRONT YARD **	15000	15000
CORNER APPROACH FRONT WITH STOP SIGN **	25000	25000
CORNER SIDE YARD WITH STOP SIGN **	20000	20000

\*\* REFER TO LAYOUT DETAIL THIS PAGE

- SETBACK REQUIREMENTS FOR APPROACH AND CORRESPONDING SIDE YARDS WITH STOP SIGNS ALSO APPLY TO TRAFFIC SIGNALS AND PEDESTRIAN CROSS WALKS
- ALL DIMENSIONS ARE IN MILLIMETRES UNLESS OTHERWISE NOTED
- FOR LAYOUT OF TREES WITHIN PLANS OF SUBDIVISION, ABOVE GRADE UTILITIES SUCH AS STREET LIGHTS AND TRANSFORMERS ARE TO BE GROUPED TOGETHER WHERE POSSIBLE TO MAXIMIZE STREETSCAPE OPPORTUNITIES
- APPROVED PLANT LIST IS AVAILABLE FROM EITHER PARKS PLANNING AND DEVELOPMENT SECTION OR THE FORESTRY SECTION
- SMALL AND LARGE TREES ARE DEFINED BY BOTH GROWING HABIT AND CANOPY WIDTH AT MATURITY

Barrie TREE STREET LAYOUT REV No. 2 DATE: APR 2023 SCALE: N.T.S. P1315

5 TREE STREET LAYOUT N.T.S.

- THE CONTRACTOR SHALL REVIEW ALL INFORMATION IN THE DRAWINGS, DETAILS AND SPECIFICATIONS FOR THIS PROJECT, AND REPORT ANY DISCREPANCY OR SUBSTITUTION TO THE CONTRACT ADMINISTRATOR IN WRITING PRIOR TO COMMENCEMENT OF WORK
- ALL PLANTING MATERIAL, AND OPERATIONS TO MEET OR EXCEED THE HORTICULTURAL STANDARDS OF THE CANADIAN NURSERY LANDSCAPE ASSOCIATION AND LANDSCAPE ONTARIO. ALL PLANT MATERIAL TO BE NO.1 GRADE NURSERY STOCK. THE CITY OF BARRIE RETAINS THE RIGHT TO REFUSE ANY UNSATISFACTORY STOCK
- DECIDUOUS STREET TREES SHALL BE A MINIMUM OF 60mm CALIPER WITH A STRAIGHT CENTRAL LEADER AND WELL BRANCHED 1.5m ABOVE GRADE UNLESS OTHERWISE STATED, REFER TO P1310
- THE CONTRACTOR SHALL VERIFY THE LOCATION OF ALL UTILITIES AND IS RESPONSIBLE FOR ANY DAMAGE TO SERVICES, EXISTING VEGETATION, OR ANY OTHER FEATURES TO BE RETAINED
- THE CONTRACTOR SHALL STAKE OUT ALL PLANTING LOCATIONS FOR APPROVAL BY THE CONTRACT ADMINISTRATOR, AND/OR CITY STAFF PRIOR TO PLANTING
- FOR ALL LANDSCAPE PLANS, ALL DIMENSIONS ARE TO BE SHOWN IN MILLIMETRES UNLESS OTHERWISE INDICATED
- COMPLY WITH THE FOLLOWING PLANTING SETBACKS AS ILLUSTRATED ON P1315
- ALL PLANT MATERIAL AND WORKMANSHIP WILL BE INSPECTED AND IS UNDER WARRANTY FOR A MINIMUM OF TWO YEARS FROM THE DATE OF WRITTEN ACCEPTANCE. ALL PLANT MATERIAL MUST BE IN A HEALTHY, VIGOROUS GROWING CONDITION SATISFACTORY TO THE CONTRACT ADMINISTRATOR AT THE END OF THE WARRANTY PERIOD, OR TO BE REPLACED AT THE CONTRACTOR'S EXPENSE
- WATER AT TIME OF PLANTING AND WHENEVER DEEMED NECESSARY TO MAINTAIN THE TREES IN A HEALTHY CONDITION
- INSTALLATION OF THE PLANT MATERIAL PRIOR TO INSPECTION BY THE LANDSCAPE ARCHITECT AND/OR CITY STAFF WILL BE THE CONTRACTOR'S RESPONSIBILITY. THE LANDSCAPE ARCHITECT AND/OR CITY OF BARRIE RESERVES THE RIGHT TO REJECT ANY PLANTS, WHETHER INSTALLED OR NOT, WHICH DO NOT CONFORM TO THE SPECIFICATIONS AND/OR SITE DRAWINGS. REMOVE ALL REJECTED PLANTS FROM THE SITE IMMEDIATELY. DO NOT REMOVE ANY LABELS FROM PLANTS UNTIL PLANTS HAVE BEEN INSPECTED AND APPROVED BY THE LANDSCAPE ARCHITECT AND/OR CITY STAFF
- NO ACCESSIBLE OPEN HOLE TREE PITS SHALL BE PERMITTED OVERNIGHT. ALL OPEN PITS SHALL BE ADEQUATELY PROTECTED BY BARRIERS OR FILLED IN WITH SOIL PRIOR TO THE END OF EACH PLANTING DAY
- IN THE EVENT OF A DISCREPANCY BETWEEN A PLANT LIST AND DRAWING, THE DRAWING WILL BE ASSUMED TO BE CORRECT
- DO NOT PRUNE LEADERS, TREES WITH DAMAGED OR MISSING LEADERS WILL NOT BE ACCEPTED

Barrie NOTES STREETSCAPE BOULEVARD TREE PLANTING REV No. 2 DATE: APR 2023 SCALE: N.T.S. P1321

6 NOTES STREETSCAPE BOULEVARD TREE PLANTING N.T.S.