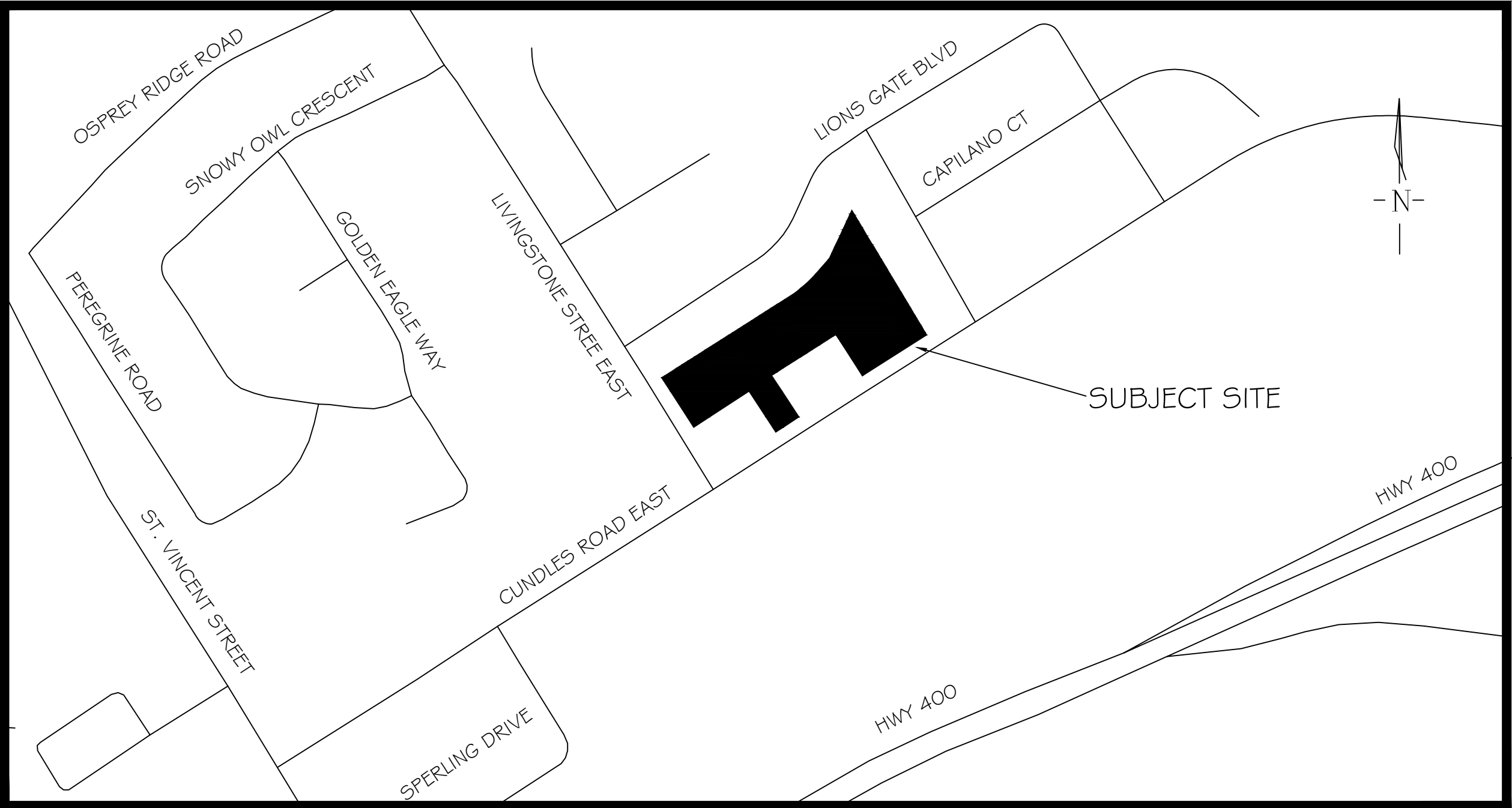


290 CUNDLES ROAD EAST, BARRIE, ON

MUNICIPAL FILE: D28-080-2022

LANDMARK ENVIRONMENTAL GROUP LTD.

PROJECT NO. LA 769-23



KEY PLAN N.T.S.

DRAWING LIST:

- EX-1 : EXISTING CONDITIONS
- TP-1 : TREE PRESERVATION PLAN
- TP-2: TREE PRESERVATION PLAN
- LD-1 : DETAILS I

CLIENT:

CAL-PARC DEVELOPMENTS INC.

MUNICIPALITY:



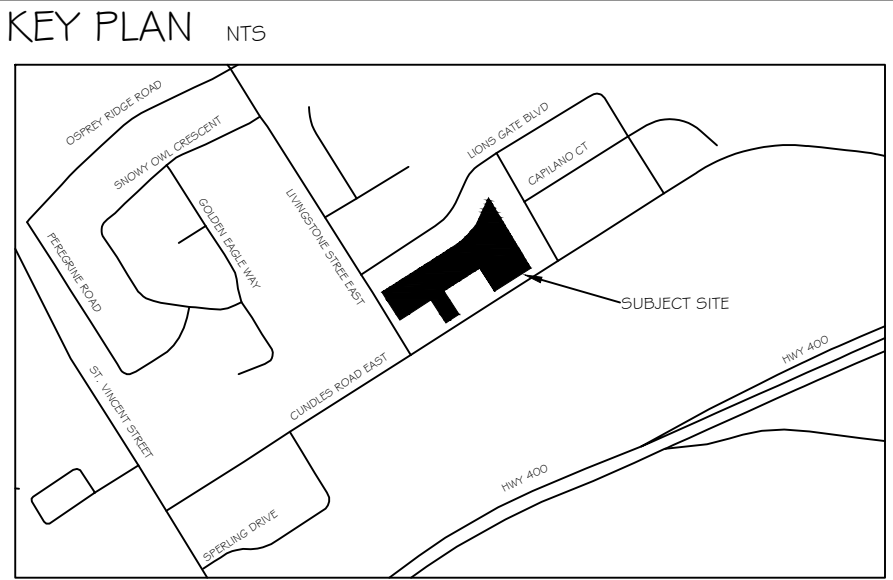
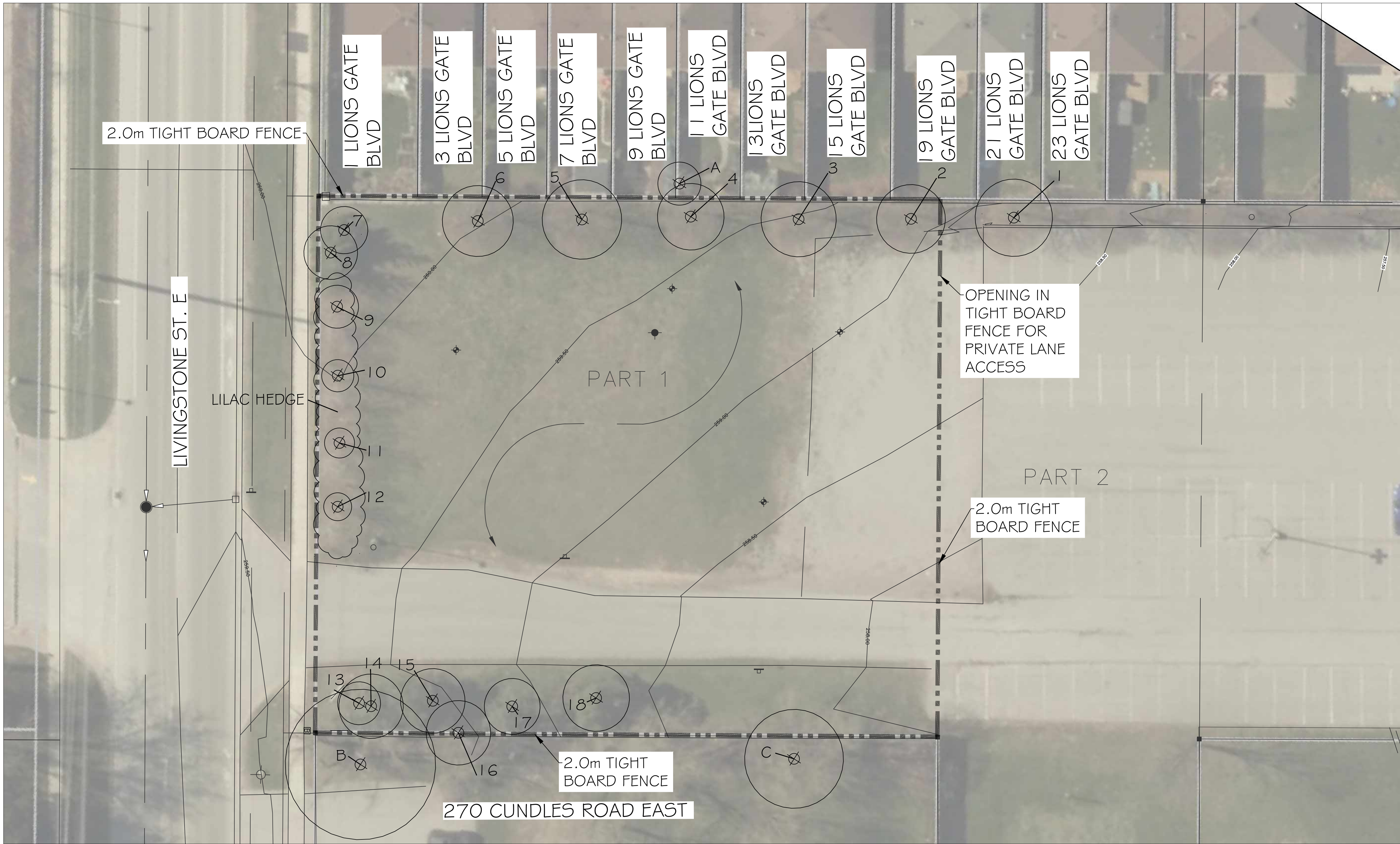
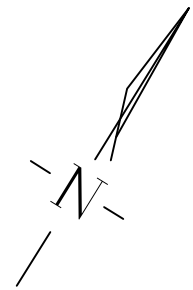
CITY OF BARRIE
70 COLLIER STREET, P.O. BOX 400,
BARRIE, ON
L4M 4T5

LANDSCAPE ARCHITECT:



LANDMARK
ENVIRONMENTAL GROUP LTD
Landscape Architects
Consulting Arborists
Urban Forestry

LANDSCAPE ARCHITECTS
& CONSULTING ARBORISTS
OFFICE: 705-796-1122
info@LEGroupLtd.com
www.LEGroupLtd.com



GENERAL NOTES

The Client and its contractors are responsible for all utility locates and confirming all setbacks, elevations, grades, etc. prior to installation of the constructed works. The Contractor is to report any discrepancies in writing to the Landscape Architect prior to proceeding with the works to determine the impact and suitability of the proposed works. The Landscape Architect will not be responsible for any unapproved adjustments on site. Construction of the works must conform to Authority requirements and applicable codes where they have jurisdiction.

All specifications and drawings are instruments of service and are the property and ownership of the Landmark Environmental Group Ltd. As such, the drawings shall not be modified or reproduced without the expressed written consent of Landmark Environmental Group Ltd. or they will be considered void. The said drawings are for Site Plan approval only and may require additional detailing prior to tender and construction.

The Landmark Environmental Group Ltd. is not liable for errors or omissions from the use of these drawings prior to approval, seal, signature and date, and will be considered void. It is advised that the Contractor contact the Landscape Architect prior to commencement of the construction works to ensure that the Contractor has the latest approved drawings.

The Landmark Environmental Group Ltd. is not responsible for the accuracy of the base drawing information (eg Survey, Architectural, Engineering, etc. If there are any discrepancies, the Contractor will refer to the appropriate base drawing information and report discrepancies on the Landscape Drawings to the Landscape Architect.

© Copyright Landmark Environmental Group Ltd.

- LEGEND**
- PROPERTY BOUNDARY
 - TREE LOCATION WITH CANOPY
 - OFFSITE TREE LOCATION WITH CANOPY

3	JULY 27-23	D.L.	ISSUED FOR UPDATE DRAWINGS AS PER SITE PLAN
2	JULY 10-23	D.L.	ISSUED FOR UPDATE DRAWINGS AS PER NEW SURVEY
1	MAY 30-23	B.B.	ISSUED FOR UPDATE DRAWINGS AS PER NEW SITE PLAN

NO	DATE	BY	REVISIONS
----	------	----	-----------

STAMP	APPROVAL

AERIAL SOURCED FROM SIMCOE COUNTY GIS.

	LANDSCAPE ARCHITECTS & CONSULTING ARBORISTS
ENVIRONMENTAL GROUP LTD	OFFICE: 705-796-1122
Landscape Architects Consulting Arborists Urban Forestry	info@LEGroupLtd.com www.LEGroupLtd.com

CLIENT:	CAL-PARC DEVELOPMENTS INC
PROJECT:	290 CUNDLES ROAD, BARRIE
LEGAL DESCRIPTION:	BLOCK 12, PLAN 51M718, BARRIE
DRAWING:	EXISTING CONDITIONS
SCALE BAR: 4m 0 4 8 12 Scale = 1:200	
PROJECT NO.: LA 769-23	SCALE: 1:200
MUNICIPAL FILE NO.: D28-080-2022	DATE: FEB 24, 2023
DRAWN BY: B.B./D.L.	CHECKED BY: J.H.
	DRAWING No.: EX-1

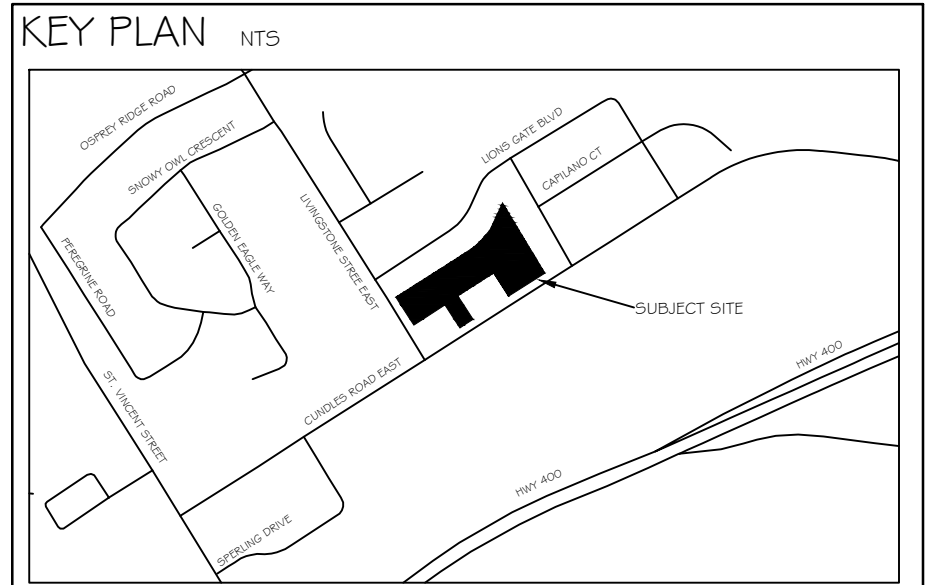
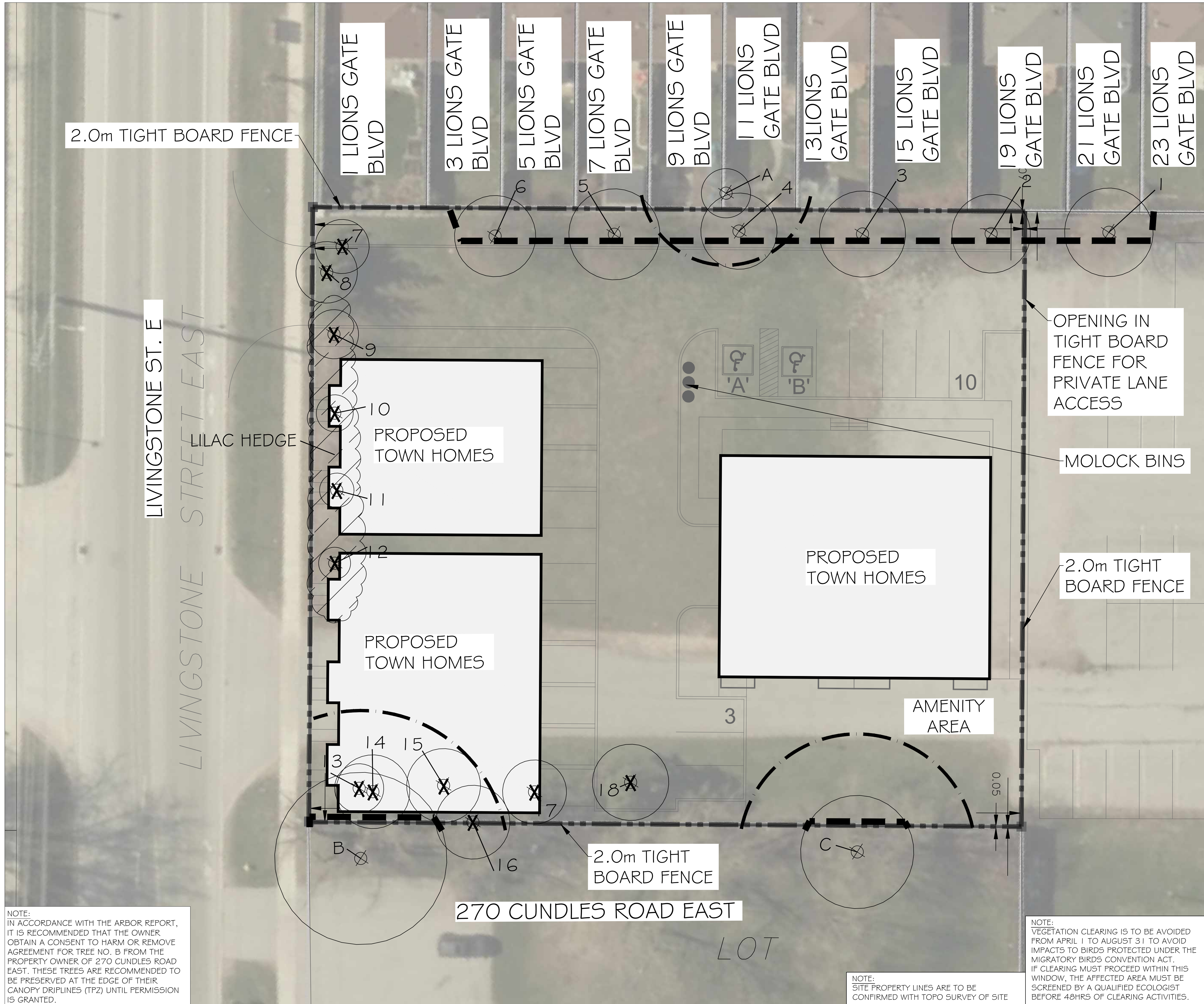
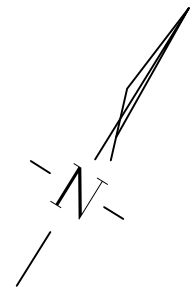
ONSITE TREE INVENTORY						
KEY	BOTANICAL NAME	COMMON NAME	DBH (cm)	COMMENTS	CONDITION	CANOPY RADIUS (m)
1	<i>Tilia cordata</i>	Little Leaf Linden	34.5	multiple leaders included bark, bark wounding from pruning, epicormic branching,	3 Fair	3.6
2	<i>Tilia cordata</i>	Little Leaf Linden	28	multiple leaders included bark, epicormic branching, bark bulges	3 Fair	3.2
3	<i>Tilia cordata</i>	Little Leaf Linden	30.5	multiple leaders included bark, epicormic branching, coppice growth pruned	3 Fair	3.5
4	<i>Tilia cordata</i>	Little Leaf Linden	32.5	branch stubs from pruning, epicormic branching	2 Marginal	3.1
5	<i>Tilia cordata</i>	Little Leaf Linden	32.5	multiple leaders included bark, epicormic branching, pruned	3 Fair	3.7
6	<i>Tilia cordata</i>	Little Leaf Linden	34	multiple leaders included bark, pruned, branch stubs, yellow belly sapsucker	3 Fair	3.3
7	<i>Picea glauca</i>	White Spruce	15	Lower branch dieback, spruce gall	3 Fair	2.2
8	<i>Picea glauca</i>	White Spruce	18	leader died lateral grew, Lower branch dieback, sap pitching	2 Marginal	2.5
9	<i>Acer x freemanii</i>	Freeman Maple	16	bark wounding, salt damage, epicormic branching	1 Poor	2.0
10	<i>Acer x freemanii</i>	Freeman Maple	15	salt damage, epicormic branching, multiple leaders	1 Poor	1.5
11	<i>Acer x freemanii</i>	Freeman Maple	13.5	epicormic branching, branch dieback, salt damage	1 Poor	1.4
12	<i>Acer x freemanii</i>	Freeman Maple	13	salt damage, epicormic branching, branch dieback	1 Poor	1.3
13	<i>Picea glauca</i>	White Spruce	17.5	Lower branch dieback, epicormic branching, bark inclusion	1 Poor	2.0
14	<i>Picea glauca</i>	White Spruce	29	Lower branch pruning, epicormic branching, suppressed under willow	1 Poor	3.0
15	<i>Picea glauca</i>	White Spruce	23	Lower branch pruning, epicormic branching, sap pitching	3 Fair	3.0
16	<i>Salix fragilis</i>	Crack Willow	55	epicormic branching, stems cut, branch dieback, broken branches	1 Poor	3.0
17	<i>Picea glauca</i>	White Spruce	27	Lower branch pruning, branch dieback, sap pitching,	1 Poor	2.6
18	<i>Picea glauca</i>	White Spruce	27	Lower branch pruning, sap pitching, epicormic branching	1 Poor	3.1

OFFSITE TREE INVENTORY				
KEY	BOTANICAL NAME	COMMON NAME	CANOPY RADIUS (m)	
A	<i>Acer platanoides</i>	Norway Maple	3.0	
B	<i>Salix fragilis</i>	Crack Willow	7.0	
C	<i>Salix fragilis</i>	Crack Willow	4.6	

NOTE:
IN ACCORDANCE WITH THE ARBOR REPORT, IT IS RECOMMENDED THAT THE OWNER OBTAIN A CONSENT TO HARM OR REMOVE AGREEMENT FOR TREE NO. B FROM THE PROPERTY OWNER OF 270 CUNDLES ROAD EAST. THESE TREES ARE RECOMMENDED TO BE PRESERVED AT THE EDGE OF THEIR CANOPY DRIPLINES (TPZ) UNTIL PERMISSION IS GRANTED.

NOTE:
SITE PROPERTY LINES ARE TO BE CONFIRMED WITH TOPO SURVEY OF SITE

NOTE:
VEGETATION CLEARING IS TO BE AVOIDED FROM APRIL 1 TO AUGUST 31 TO AVOID IMPACTS TO BIRDS PROTECTED UNDER THE MIGRATORY BIRDS CONVENTION ACT. IF CLEARING MUST PROCEED WITHIN THIS WINDOW, THE AFFECTED AREA MUST BE SCREENED BY A QUALIFIED ECOLOGIST BEFORE 48HRS OF CLEARING ACTIVITIES.



GENERAL NOTES

The Client and its contractors are responsible for all utility locates and confirming all setbacks, elevations, grades, etc. prior to installation of the constructed works. The Contractor is to report any discrepancies in writing to the Landscape Architect prior to proceeding with the works to determine the impact and suitability of the proposed works. The Landscape Architect will not be responsible for any unapproved adjustments on site. Construction of the works must conform to Authority requirements and applicable codes where they have jurisdiction.

All specifications and drawings are instruments of service and are the property and ownership of the Landmark Environmental Group Ltd. As such, the drawings shall not be modified or reproduced without the expressed written consent of Landmark Environmental Group Ltd. or they will be considered void. The said drawings are for Site Plan approval only and may require additional detailing prior to tender and construction.

The Landmark Environmental Group Ltd. is not liable for errors or omissions from the use of these drawings prior to approval, seal, signature and date, and will be considered void. It is advised that the Contractor contact the Landscape Architect prior to commencement of the construction works to ensure that the Contractor has the latest approved drawings.

The Landmark Environmental Group Ltd. is not responsible for the accuracy of the base drawing information (eg Survey, Architectural, Engineering, etc.). If there are any discrepancies, the Contractor will refer to the appropriate base drawing information and report discrepancies on the Landscape Drawings to the Landscape Architect.

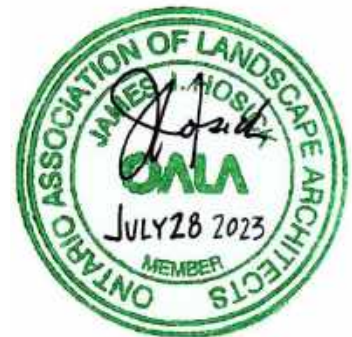
© Copyright Landmark Environmental Group Ltd.

LEGEND			
----	PROPERTY BOUNDARY		
⊕ ²	TREE LOCATION WITH CANOPY		
⊕ ^A	OFFSITE TREE LOCATION WITH CANOPY		
---	TREE PRESERVATION FENCING		
---	5m FOUNDATION LIMIT		
X	TREE RECOMMENDED TO BE REMOVED		
▨	TREE CANOPY TO BE REMOVED		

3	JULY 27-23	D.L.	ISSUED FOR UPDATE DRAWINGS AS PER SITE PLAN
2	JULY 10-23	D.L.	ISSUED FOR UPDATE DRAWINGS AS PER NEW SURVEY
1	MAY 30-23	B.B.	ISSUED FOR UPDATE DRAWINGS AS PER NEW SITE PLAN

NO	DATE	BY	REVISIONS
----	------	----	-----------

STAMP



APPROVAL

AERIAL SOURCED FROM SIMCOE COUNTY GIS.
CONCEPT SITE PLAN PROVIDED BY INNOVATIVE
PLANNING SOLUTIONS FILE # 22 - 1256

LANDMARK
ENVIRONMENTAL GROUP LTD
Landscape Architects
Consulting Arborists
Urban Forestry

**LANDSCAPE ARCHITECTS
& CONSULTING ARBORISTS**
OFFICE: 705-796-1122
info@LEGroupLtd.com
www.LEGroupLtd.com

CLIENT: CAL-PARC DEVELOPMENTS INC

PROJECT: 290 CUNDLES ROAD, BARRIE

LEGAL DESCRIPTION: BLOCK 12, PLAN 51M718, BARRIE

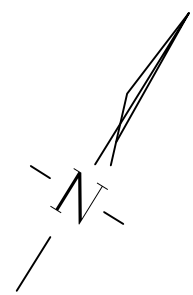
DRAWING: TREE PRESERVATION PLAN 1

SCALE BAR: 3m 0 3 6 9
Scale = 1:150

PROJECT NO.: LA 769-23
MUNICIPAL FILE NO.: D28-080-2022

SCALE: 1:150
DATE: FEB 24, 2023

DRAWN BY: B.B /D.L.
CHECKED BY: J.H.
DRAWING No.: TP-1



2.0m TIGHT BOARD FENCE

LIVINGSTONE ST. E
LIVINGSTONE STREET EAST

LILAC HEDGE

1 LIONS GATE
BLVD

3 LIONS GATE
BLVD

5 LIONS GATE
BLVD

7 LIONS GATE
BLVD

9 LIONS GATE
BLVD

11 LIONS
GATE BLVD

13 LIONS
GATE BLVD

15 LIONS
GATE BLVD

19 LIONS
GATE BLVD

21 LIONS
GATE BLVD

23 LIONS
GATE BLVD

PROPOSED
TOWN HOMES

PROPOSED
TOWN HOMES

PROPOSED
TOWN HOMES

AMENITY
AREA

2.0m TIGHT
BOARD FENCE

270 CUNDLES ROAD EAST

LOT

OPENING IN
TIGHT BOARD
FENCE FOR
PRIVATE LANE
ACCESS

MOLOCK BINS

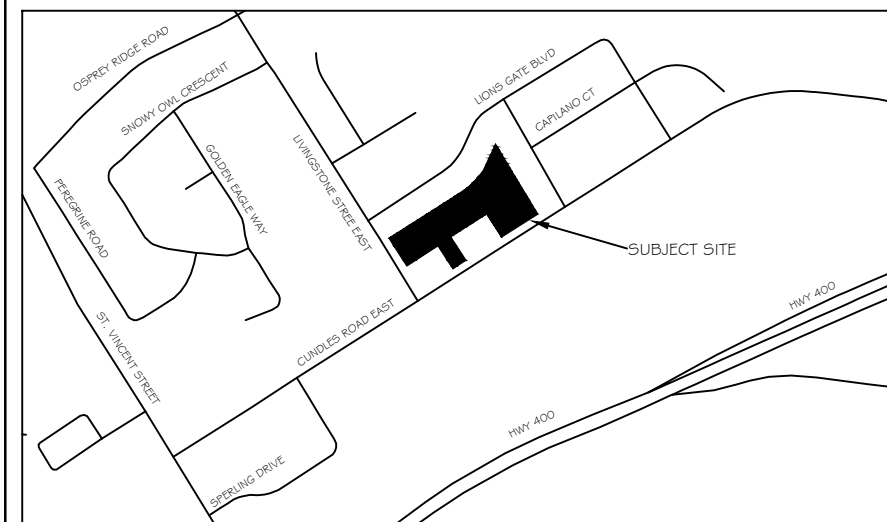
2.0m TIGHT
BOARD FENCE

NOTE:
IN ACCORDANCE WITH THE ARBOR REPORT,
IT IS RECOMMENDED THAT THE OWNER
OBTAIN A CONSENT TO HARM OR REMOVE
AGREEMENT FOR TREE NO. B FROM THE
PROPERTY OWNER OF 270 CUNDLES ROAD
EAST. THESE TREES ARE RECOMMENDED TO
BE PRESERVED AT THE EDGE OF THEIR
CANOPY DRIPLINES (TPZ) UNTIL PERMISSION
IS GRANTED.

NOTE:
SITE PROPERTY LINES ARE TO BE
CONFIRMED WITH TOPO SURVEY OF SITE

NOTE:
VEGETATION CLEARING IS TO BE AVOIDED
FROM APRIL 1 TO AUGUST 31 TO AVOID
IMPACTS TO BIRDS PROTECTED UNDER THE
MIGRATORY BIRDS CONVENTION ACT.
IF CLEARING MUST PROCEED WITHIN THIS
WINDOW, THE AFFECTED AREA MUST BE
SCREENED BY A QUALIFIED ECOLOGIST
BEFORE 48HRS OF CLEARING ACTIVITIES.

KEY PLAN NTS



GENERAL NOTES

The Client and its contractors are responsible for all utility locates and confirming all setbacks, elevations, grades, etc. prior to installation of the constructed works. The Contractor is to report any discrepancies in writing to the Landscape Architect prior to proceeding with the works to determine the impact and suitability of the proposed works. The Landscape Architect will not be responsible for any unapproved adjustments on site. Construction of the works must conform to Authority requirements and applicable codes where they have jurisdiction.

All specifications and drawings are instruments of service and are the property and ownership of the Landmark Environmental Group Ltd. As such, the drawings shall not be modified or reproduced without the expressed written consent of Landmark Environmental Group Ltd. or they will be considered void. The said drawings are for Site Plan approval only and may require additional detailing prior to tender and construction.

The Landmark Environmental Group Ltd. is not liable for errors or omissions from the use of these drawings prior to approval, seal, signature and date, and will be considered void. It is advised that the Contractor contact the Landscape Architect prior to commencement of the construction works to ensure that the Contractor has the latest approved drawings.

The Landmark Environmental Group Ltd. is not responsible for the accuracy of the base drawing information (eg Survey, Architectural, Engineering, etc. If there are any discrepancies, the Contractor will refer to the appropriate base drawing information and report discrepancies on the Landscape Drawings to the Landscape Architect.

© Copyright Landmark Environmental Group Ltd.

LEGEND

--- PROPERTY BOUNDARY

⊕² TREE LOCATION WITH CANOPY

⊕^A OFFSITE TREE LOCATION WITH CANOPY

--- TREE PRESERVATION FENCING

--- 5m FOUNDATION LIMIT

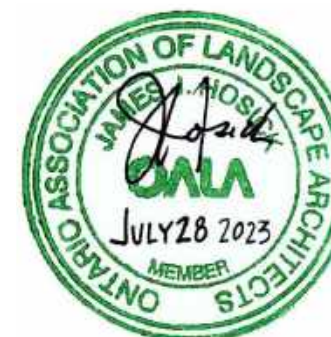
X TREE RECOMMENDED TO BE REMOVED

▨ TREE CANOPY TO BE REMOVED

3	JULY 27-23	D.L.	ISSUED FOR UPDATE DRAWINGS AS PER SITE PLAN
2	JULY 10-23	D.L.	ISSUED FOR UPDATE DRAWINGS AS PER NEW SURVEY
1	MAY 30-23	B.B.	ISSUED FOR UPDATE DRAWINGS AS PER NEW SITE PLAN

NO	DATE	BY	REVISIONS
----	------	----	-----------

STAMP APPROVAL



AERIAL SOURCED FROM SIMCOE COUNTY GIS.
CONCEPT SITE PLAN PROVIDED BY INNOVATIVE
PLANNING SOLUTIONS FILE # 22 - 1256

LANDMARK
ENVIRONMENTAL GROUP LTD
Landscape Architects
Consulting Arborists
Urban Forestry

**LANDSCAPE ARCHITECTS
& CONSULTING ARBORISTS**
OFFICE: 705-796-1122
info@LEGroupLtd.com
www.LEGroupLtd.com

CLIENT: CAL-PARC DEVELOPMENTS INC

PROJECT: 290 CUNDLES ROAD, BARRIE

LEGAL DESCRIPTION: BLOCK 12, PLAN 51M718, BARRIE

DRAWING: TREE PRESERVATION PLAN 2

SCALE BAR: 3m 0 3 6 9
Scale = 1:150

PROJECT NO.: LA 769-23
MUNICIPAL FILE NO.: D28-080-2022

SCALE: 1:150
DATE: FEB 24, 2023

DRAWN BY: B.B /D.L. CHECKED BY: J.H. DRAWING No.: TP-2

