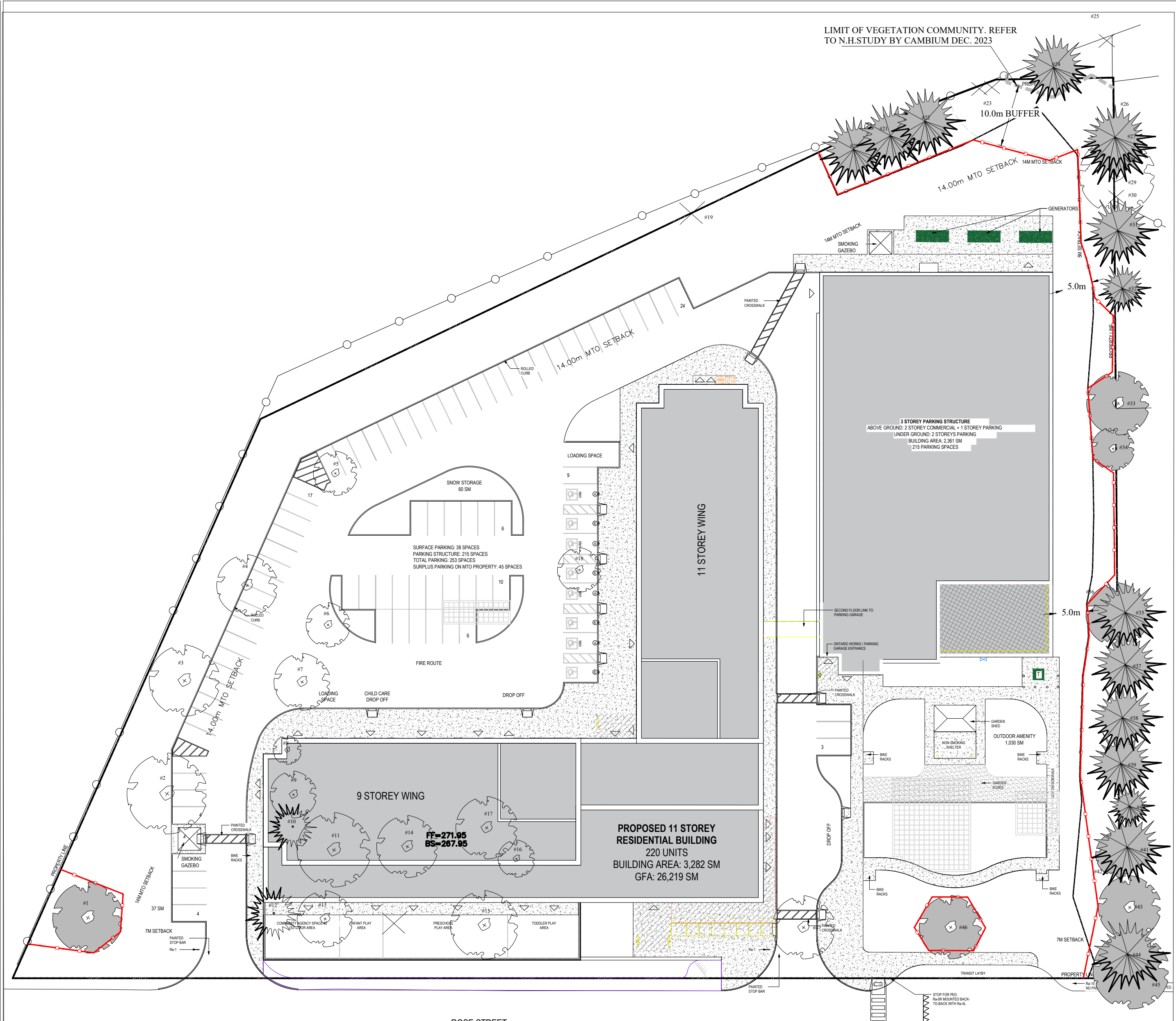




TREE INVENTORY 1:500



TREE PRESERVATION PLAN 1:500



GENERAL NOTES

CONTRACTOR IS RESPONSIBLE FOR ALL LOCATES INCLUDING ALL UNDERGROUND SERVICES PRIOR TO ANY EXCAVATION OR INSTALLATIONS. THE CONTRACTOR IS REQUIRED TO NOTIFY THE VARIOUS UTILITY COMPANIES 48 HOURS PRIOR TO THE COMMENCEMENT OF ANY WORK.

ANY ACCOMPANYING DOCUMENTATION RELATING TO THE LANDSCAPE PLAN AND/OR PRESERVATION PLAN SUCH AS TENDER DOCUMENTS AND CHANGE NOTICES ARE TO BE ENDORSED BY J.D.B. ASSOCIATES LIMITED PRIOR TO THE BEGINNING OF ANY SITE WORKS. IN THE EVENT THAT A DISCREPANCY THE DRAWING SHALL BE ASSUMED CORRECT.

IT IS THE RESPONSIBILITY OF THE PERSON OR PERSONS RESPONSIBLE FOR THE CONSTRUCTED WORKS TO NOTIFY THE LANDSCAPE ARCHITECT WHEN PREPARED FOR ANY REQUIRED INSPECTIONS AND SIGN OFFS.

SCHEDULED MEETINGS SHALL TAKE PLACE AT THE CLOSEST MUTUALLY CONVENIENT TIME.

No.	REVISION	DATE	APRVD
1.	COMPLETED FOR SUBMISSION TO THE CITY OF BARRIE	April 26, 2024	ST

ALL DRAWINGS AND SPECIFICATIONS ARE INSTRUMENTS OF SERVICE AND ARE THE PROPERTY OF JDB ASSOCIATES LIMITED. DRAWINGS ARE NOT TO BE MODIFIED AND/OR REPRODUCED WITHOUT THE WRITTEN CONSENT OF JDB ASSOCIATES LIMITED. REPRODUCTION OF DRAWINGS IN ANY FORM WITHOUT THE CONSENT OF JDB ASSOCIATES LIMITED VOIDS THE DRAWING AT WHICH TIME JDB ASSOCIATES LIMITED ACCEPTS NO LIABILITY FOR THE DRAWING CONTENT OR WORKS RESULTING FROM SAID REPRODUCTION.

DRAWINGS MAY BE REPRODUCED BY MUNICIPAL AND GOVERNMENT AGENCIES RESPONSIBLE FOR APPROVALS FOR THEIR OWN USE. JDB ASSOCIATES RESERVES THE RIGHT TO WITHDRAW ANY DRAWING(S) FROM GOVERNMENT OR MUNICIPAL AGENCIES WHETHER APPROVED OR NOT IN THE EVENT THAT ACCOUNTS ARE NOT SETTLED OR REMAIN OUTSTANDING.

IT IS THE RESPONSIBILITY OF THE CONTRACTOR TO VERIFY ALL DIMENSIONS ON THE SITE AND REPORT ANY DISCREPANCIES OR VARIATIONS FROM THE SUPPLIED INFORMATION TO THE LANDSCAPE ARCHITECT WITH THE PROJECT. JDB ASSOCIATES LIMITED IS NOT RESPONSIBLE FOR THE ACCURACY OF SURVEY, ARCHITECTURAL, MECHANICAL, ENGINEERING OR ELECTRICAL INFORMATION SHOWN ON THE DRAWING. FOR FURTHER INFORMATION REFER TO APPROPRIATE SURVEY, ARCHITECTURAL, MECHANICAL, ENGINEERING OR ELECTRICAL DRAWINGS PRIOR TO PROCEEDING WITH ANY WORKS.

THIS DRAWING IS NOT TO BE SCALED.

LEGEND

- SUBJECT LANDS.
- EXTENTS OF ENVIRONMENTALLY PROTECTED AREAS.
- EXISTING CHAIN LINK FENCE TO REMAIN
- EXISTING TREES SHARED WITH/ OR ON ADJACENT SITE AND HIGH VALUE TREES ON SITE TO BE PRESERVED.
- EXISTING TREES TO BE REMOVED.
- TREE IDENTIFICATION NUMBER. REFER TO TREE LIST ON THIS PAGE
- TREE PRESERVATION / SILTATION FENCE AS PER P-1232 ON TP-2.
- DEAD TREES TO BE REMOVED

Note:  
There is 1 native trees proposed to be removed on site.  
COB Ecological offset = 1trees X \$500/tree = \$500

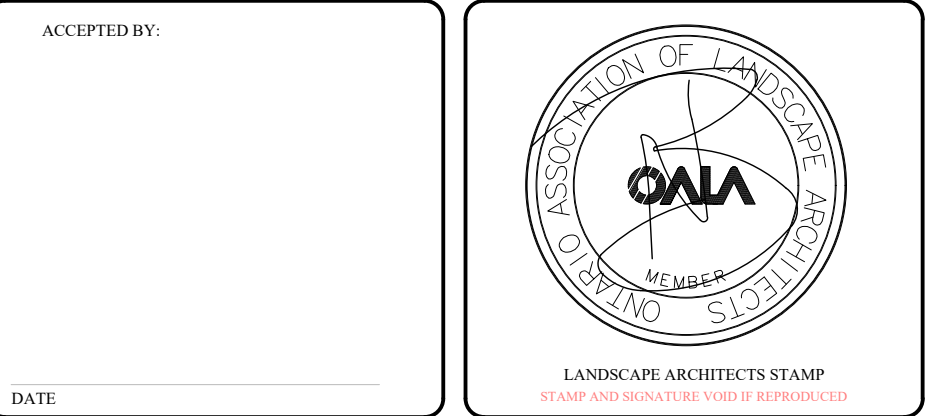
Note:  
- NO ENDANGERED SPECIES OF TREES HAVE BEEN IDENTIFIED ON THIS SITE AND ADJACENT LANDS.  
- TREE LOCATIONS HAVE BEEN SURVEYED BY "BOWERS JONES FOURNIER SURVEYING LTD., MAY 26, 2021."  
OTHER BOUNDARY TREES HAVE BEEN TRIANGULATED.

Tree Inventory Table:

Tree #	# of Trees	Common Name	Botanical Name	DBH (cm)	Height (m)	Crown Ø (m)	Maturity	Health Conditions
1	1	Acer platanoides 'Crimson King'	Crimson Norway Maple	45	12	12	Mature	Good
2	1	Acer platanoides	Norway Maple	50	12	13	Mature	Good
3	1	Acer platanoides	Norway Maple	48	12	12	Mature	Good-Fair
4	1	Acer platanoides	Norway Maple	36	12	10	Mature	Fair-Poor
5	1	Acer platanoides 'Crimson King'	Crimson Norway Maple	36	10	7	Mature	Poor
6	1	Tilia cordata	Linden	38	14	7	Mature	Good-Fair
7	1	Tilia cordata	Linden	35	10	9	Mature	Good
8	1	Tilia cordata	Linden	34	8	4.5	Mature	Poor
9	1	Tilia cordata	Linden	35	12	7.5	Mature	Good-Fair
10	1	Picea pungens	Colorado Blue Spruce	44	14	7	Mature	Good
11	1	Acer saccharum	Sugar Maple	60	14	12	Mature	Good
12	1	Picea pungens	Colorado Blue Spruce	43	12	6.5	Mature	Fair
13	1	Acer platanoides 'Crimson King'	Crimson Norway Maple	50	12	9	Mature	Good
14	1	Tilia cordata	Linden	40	10	10	Mature	Good
15	1	Acer platanoides 'Crimson King'	Crimson Norway Maple	57	14	11	Mature	Good
16	1	Tilia cordata	Linden	38	14	6	Mature	Good
17	1	Tilia cordata	Linden	40	12	10	Mature	Good-Fair
18	1	Malus sylvestris	Crab Apple	35	7	7	Mature	Poor
19	1		Dead tree					
20	1	Pinus nigra	Austrian Pine	37+22+22+25	10	10	Mature	Fair
21	1	Pinus nigra	Austrian Pine	34	11	10	Mature	Fair
22	1	Pinus nigra	Austrian Pine	42	12	10.5	Mature	Good
23	2		Dead					
24	1	Pinus sylvestris	Scots Pine	54	16	10	Mature	Poor
25	1		Dead					
26	1		Dead Ash					
27	1	Picea abies	Norway Spruce	50	18	13	Mature	Good
28	1	Picea abies	Norway Spruce	45	18	13	Mature	Good
29	1	Quercus rubra	Red Oak	24	18	12	Mature	Good
30	1		Dead Norway Spruce					
31	1	Picea abies	Norway Spruce	60	20	13	Mature	Good
32	1	Picea abies	Norway Spruce	50	20	9	Mature	Fair
33	1	Acer negundo	Manitoba Maple	35	10	10	Mature	Fair
34	1	Juglans nigra	Walnut	25	10	7	Mature	Fair
35	1	Picea abies	Norway Spruce	40	20	10	Mature	Good
36	1	Morus alba	White Mulberry	10	10.5	10	Mature	Fair
37	1	Picea abies	Norway Spruce	60	20	14	Mature	Good
38	1	Picea abies	Norway Spruce	38	20	14	Mature	Good
39	1	Picea abies	Norway Spruce	60	20	14	Mature	Good
40	1	Picea abies	Norway Spruce	30	18	8	Mature	Fair
41	1	Picea abies	Norway Spruce	14	20	12	Imature	Good
42	1	Morus alba	White Mulberry	10+15	8	7	Mature	Fair-Poor
43	1	Acer platanoides	Norway Maple	60	18	9	Mature	Fair
44	1	Picea abies	Norway Spruce	70	20	14	Mature	Fair
45	1	Acer platanoides	Norway Maple	32	11	12	Mature	Good
46	1	Acer platanoides 'Crimson King'	Crimson Norway Maple	65	12	10	Mature	Good
47	1	Acer platanoides 'Crimson King'	Crimson Norway Maple	69	12	10	Mature	Good

BASE PLAN REVISED: FEBRUARY, 2024

Client info:  
County of Simcoe, Social Housing Department  
1110 Highway #26, Midhurst, Ontario L9X 1N6  
Phone: 705-726-9300 Ext. 1055

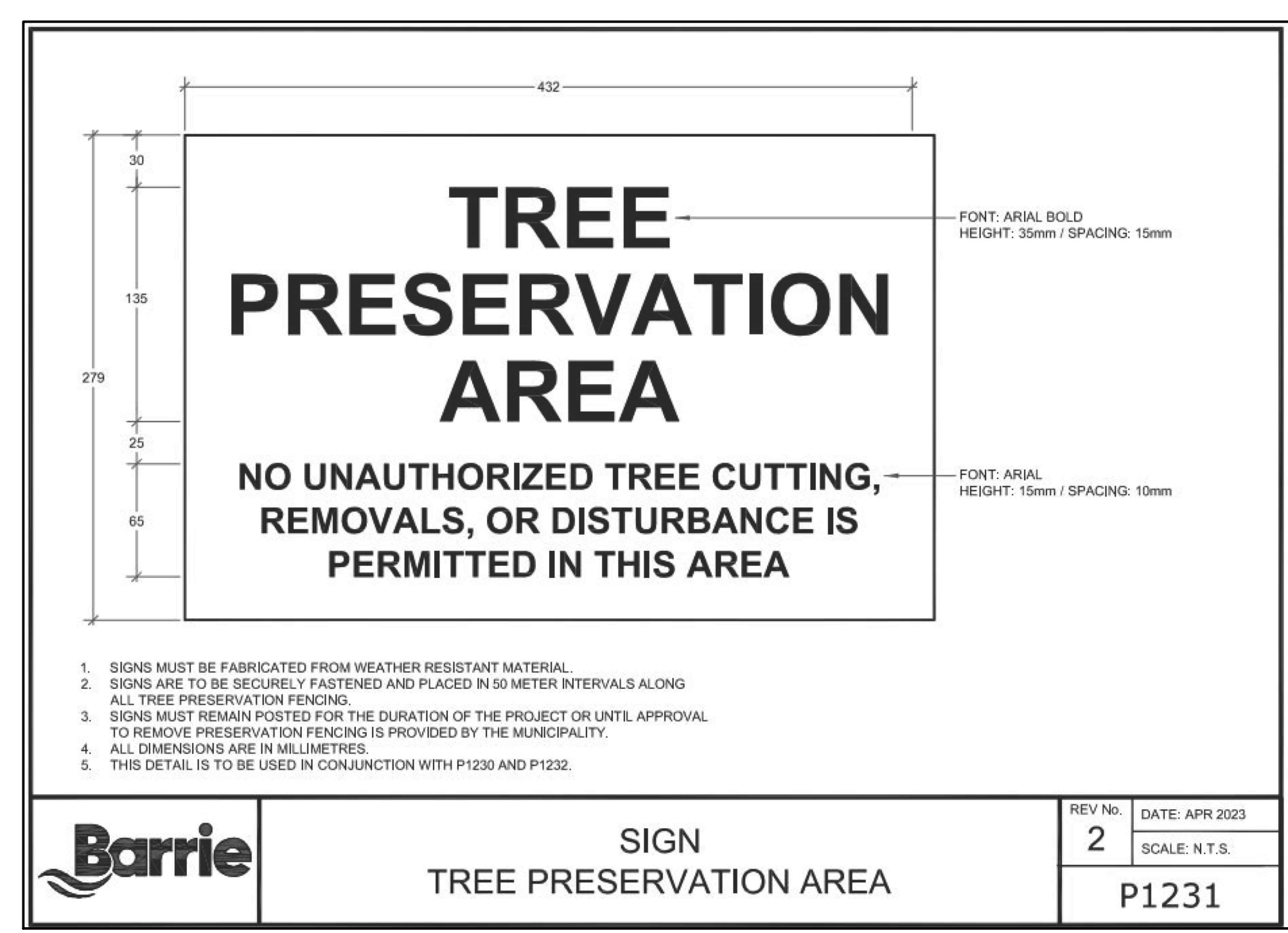
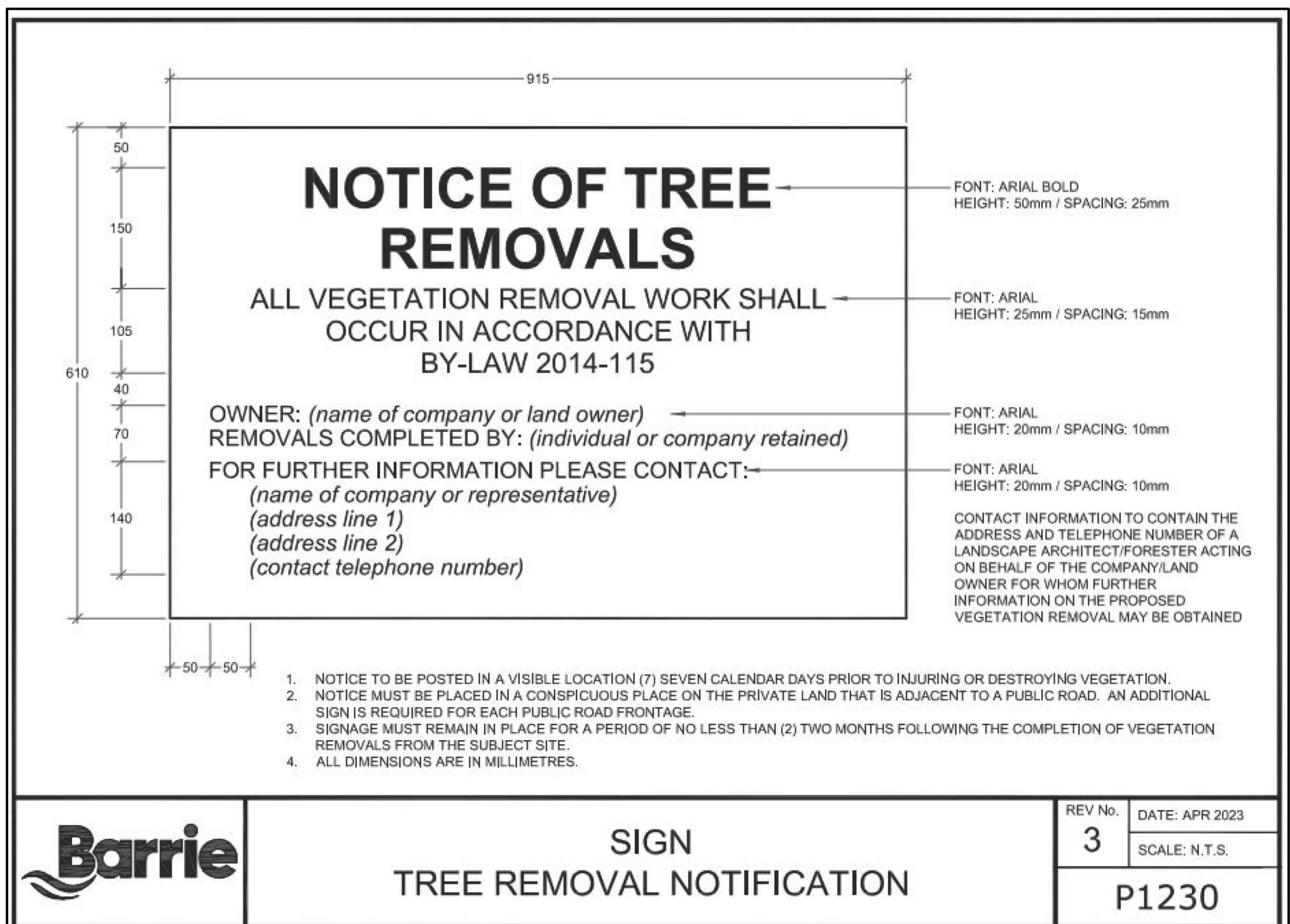
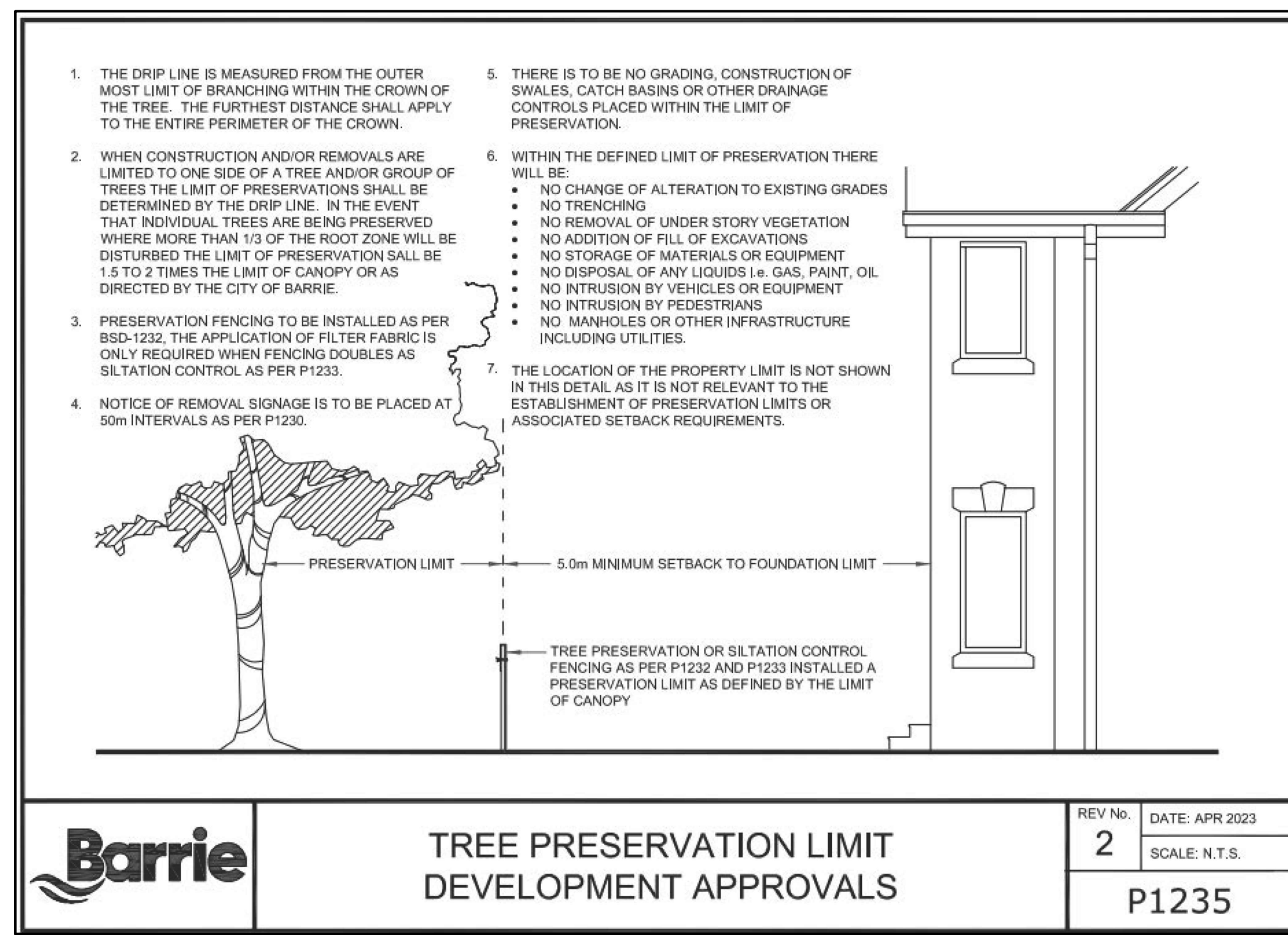
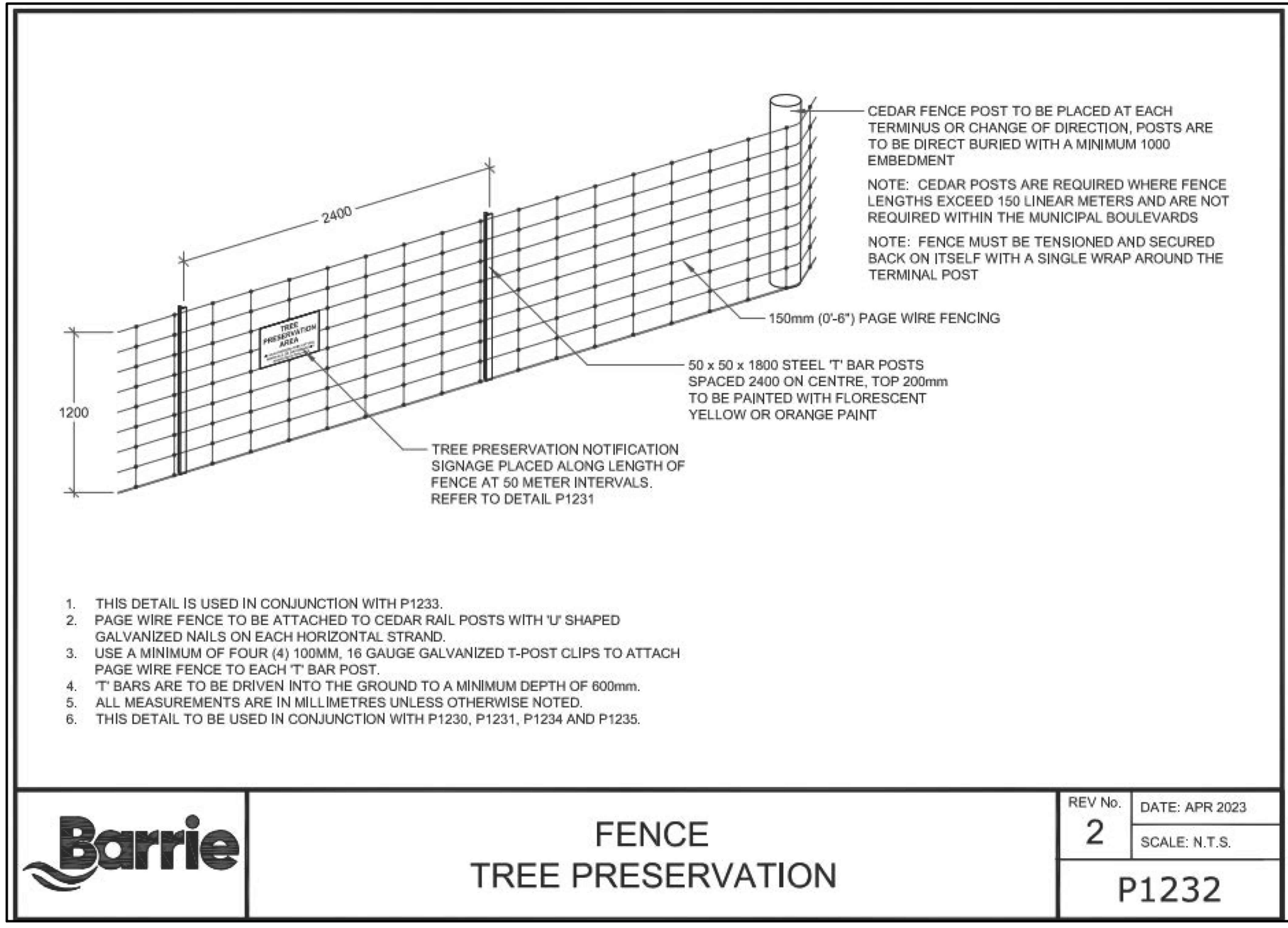


JDB ASSOCIATES LTD.  
Urban Designers  
Landscape Architects  
Arborealists  
274 Burton Ave., Suite 1201  
Barrie, Ontario  
L4N 5W4  
Fax: 705-722-5660  
Tel: 705-722-6278

20 ROSE STREET  
PART OF LOTS 7 AND 8, REGISTERED PLAN 114  
City of Barrie

TREE INVENTORY/PRESERVATION PLAN

SCALE: AS SHOWN	DESIGNED BY: ST	REVIEWED BY: NB
CITY FILE No. D28-087-2022	OUR FILE REF. # 30-23	TP-1



THE INTENT OF TREE PRESERVATION AND PROTECTION IS TO PROVIDE AN INVENTORY OF EXISTING TREES ON SITE. IT IS NOT A SURVEY AND THEREFORE THE EXACT LOCATION OF EXISTING TREES MUST BE VERIFIED ON SITE PRIOR TO THE COMMENCEMENT OF ANY CONSTRUCTION WORKS.

ALL TREES TO BE PRESERVED SHALL BE INDICATED AND MARKED AS SUCH ON SITE BY THE LANDSCAPE ARCHITECT PRIOR TO THE COMMENCING OF THE CLEARING AND GRUBBING CONTRACT.

AS PART OF THE CLEARING AND GRUBBING CONTRACTUAL WORK, TREES LOCATED AT THE EDGES OF ALL PRESERVATION AREAS REGARDLESS OF SIZE ARE TO BE PRUNED OF DEAD AND DISEASED LIMBS AND INDIVIDUAL SPECIMENS AND ARE TO BE REMOVED IN ACCORDANCE WITH ACCEPTED HORTICULTURAL PRACTICES AND TO THE SATISFACTION OF THE CITY OF BARRIE UNDER THE DIRECT SUPERVISION OF THE LANDSCAPE ARCHITECT.

IN THE EVENT THAT A TREE THAT HAS BEEN DESIGNATED FOR PRESERVATION IS DAMAGED OR REMOVED WITHOUT PRIOR WRITTEN PERMISSION FROM THE LANDSCAPE ARCHITECT AND CITY OF BARRIE, THE LAND OWNER SHALL BE RESPONSIBLE FOR THE REMOVAL AND OR DAMAGE AS OUTLINED IN BYLAW 2014-115, SECTION 15.

**SPECIFICATIONS FOR PRESERVATION & PROTECTION**

PRIOR TO THE COMMENCEMENT OF ANY CONSTRUCTION WORKS, ALL TREES OR BLOCKS OF TREES THAT HAVE BEEN DESIGNATED FOR PRESERVATION, AS INDICATED ON THE ACCOMPANYING PLAN SHALL BE FULLY PROTECTED BY THE ERECTION OF HOARDING OUTSIDE OF OR AT THE DRIP LINE (REFER TO BSD-1235).

EQUIPMENT OR VEHICLES SHALL NOT BE PARKED, REPAIRED OR REFUELED WITHIN TREE PROTECTION ZONE, CONSTRUCTION MATERIALS SHALL NOT BE STORED AND EARTH MATERIALS SHALL NOT BE STOCKPILED WITHIN THE DRIP LINE AREA OF ANY TREE NOT DESIGNATED FOR REMOVAL.

ANY TREES NOT DESIGNATED FOR REMOVAL SHALL NOT HAVE RIGGING CABLES ATTACHED OR WRAPPED AROUND THEM. NOR SHALL ANY CONTAMINANTS BE DUMPED WITHIN THE PROTECTIVE AREAS. FURTHER, NO CONTAMINANTS SHALL BE DUMPED OR FLUSHED WHERE THEY MAY COME INTO CONTACT WITH THE FEEDER ROOTS OF THE TREES TO BE PRESERVED.

THE CONTRACTOR OR LAND OWNER SHALL TAKE EVERY PRECAUTION TO PREVENT DAMAGE TO TREES OR SHRUBS THAT ARE NOT DESIGNATED FOR REMOVAL AS PER THE ACCOMPANYING PLAN.

UNLESS THE CONTRACT WORK SPECIFICALLY REQUIRES WORK WITHIN THE DRIP LINE OF TREES NOT DESIGNATED FOR REMOVAL, EQUIPMENT SHALL NOT BE OPERATED WITHIN THAT DRIP LINE AREA. WHEN CONTRACT WORK MUST BE COMPLETED WITHIN THE DRIP LINE OF TREES NOT DESIGNATED FOR REMOVAL, OPERATION OF EQUIPMENT WITHIN THAT DRIP LINE SHALL BE KEPT TO THE MINIMUM AMOUNT REQUIRED TO COMPLETE THE WORKS. PRIOR TO THE COMMENCEMENT OF SUCH WORKS THE LANDSCAPE ARCHITECT AND CITY OF BARRIE MUST BE GIVEN WRITTEN NOTIFICATION AND WILL SUBSEQUENTLY BE REQUIRED TO INSPECT SAID WORKS.

THE CONTRACTOR'S OPERATION SHALL IN NO WAY CAUSE DAMAGE TO THE TRUNK OR BRANCHES OF TREES NOT DESIGNATED FOR REMOVAL.

THE CONTRACTOR'S OPERATION SHALL NOT CAUSE FLOODING OR SEDIMENT DEPOSITS IN AREAS WHERE TREES ARE NOT DESIGNATED FOR REMOVAL.

IN THE EVENT THAT IT IS NECESSARY TO REMOVE LIMBS OR PORTIONS OF TREES NOT DESIGNATED FOR REMOVAL, WRITTEN APPROVAL AND DIRECTION MUST BE GIVEN BY THE LANDSCAPE ARCHITECT AND CITY OF BARRIE PRIOR TO ANY WORKS. THE REMOVALS MUST BE EXECUTED CAREFULLY AND IN ACCORDANCE WITH STANDARD HORTICULTURAL PRACTICES AND TECHNIQUES.

IN THE EVENT THAT GRADES AROUND A TREE DESIGNATED FOR PRESERVATION ARE TO BE CHANGED, THE DEVELOPER, AGENT OR LAND OWNER SHALL BE REQUIRED TO TAKE PRECAUTIONS TO PRESERVE THE TREE, SUCH AS DRY WELLING AND ROOT FEEDING. THE PROTECTION MEASURES MUST BE DONE TO THE SATISFACTION OF THE LANDSCAPE ARCHITECT AND CITY OF BARRIE.

THE DEVELOPER SHALL BE RESPONSIBLE FOR THE MAINTENANCE AND/OR REMOVAL OF DEAD, DYING, DISEASED TREES WITHIN THE LIMIT OF THIS PLAN UNTIL END OF GENERAL MAINTENANCE.

**NOTES FOR TREE PRESERVATION AND PROTECTION**

**NOTE:**  
NO TREE CUTTING SHALL OCCUR BETWEEN APRIL 1<sup>ST</sup> AND OCTOBER 31<sup>ST</sup> UNLESS CLEARANCE FROM M.N.R. AND M.E.C.P. IS PROVIDED.

1. PROTECTION AREA IS INITIALLY IDENTIFIED IN THE FIELD BY A LICENSED ONTARIO SURVEYOR. THIS LINE APPROXIMATELY ESTABLISHES THE LIMITS OF TREE PRESERVATION SUBJECT TO AN ON-SITE MEETING WITH CITY OF BARRIE PARKS PLANNING STAFF AND THE LANDSCAPE ARCHITECT/ARBORIST.

2. THE LANDSCAPE ARCHITECT/ARBORIST AND THE CITY OF BARRIE PARKS PLANNING STAFF MEET TO REVIEW THE SURVEYED LINE PRIOR TO ANY TREE REMOVAL OCCURRING, AND TO ADJUST THE LINE WHERE APPROPRIATE TO REFLECT THE ACTUAL NATURE OF A TREAED AREA AS OPPOSED TO A STRAIGHT CUT LINE.

3. TREES THAT ARE SUSCEPTIBLE TO FALLING ONTO PRIVATE PROPERTY OR MUNICIPAL PROPERTY FROM WITHIN THE TREE PRESERVATION ZONE WILL BE IDENTIFIED FOR REMOVAL. REMOVAL WILL TAKE PLACE AS PRESCRIBED IN ITEM #6 BELOW.

4. ONCE THE SITE VISIT HAS CONCLUDED, THEN TREE PRESERVATION FENCING WILL BE ERECTED ALONG THE AGREED TREE PRESERVATION LINE.

5. FULL TREE REMOVAL OUTSIDE OF THE TREAED AREAS MAY OCCUR ONCE THE PRESERVATION FENCING HAS BEEN ERECTED, TREE REMOVAL PERMIT ISSUED, AND SIGNAGE POSTED A MINIMUM OF 7 DAYS PRIOR TO COMMENCING TREE REMOVAL ACTIVITIES ON SITE (AS PER BY-LAW 2014-115).

6. TREES ARE TO BE FELLED IN SUCH A MANNER AS TO NOT DISTURB VEGETATION TO REMAIN. NO MACHINERY OR EQUIPMENT SHALL BE OPERATED OR STORED WITHIN THE DRIPLINE OF PROTECTED TREES.

7. STUMP REMOVALS ARE TO BE IMPLEMENTED AS TO NOT TO DISTURB THE GROUND WITHIN THE TREE PRESERVATION ZONE.

8. ONCE TREE REMOVAL HAS OCCURRED, AND PRIOR TO THE ISSUANCE OF THE UNDERGROUND CERTIFICATE, A RE-INSPECTION OF THE TREE PRESERVATION AREAS MUST OCCUR WITH CITY OF BARRIE STAFF AND THE LANDSCAPE ARCHITECT/ARBORIST. ANY ADDITIONAL TREES TO BE REMOVED WILL BE NOTED BY THE CITY OF BARRIE PARKS PLANNING STAFF AND LANDSCAPE ARCHITECT/ARBORIST.

9. ALL TREES ON ADJACENT PRIVATE LAND SHALL RECEIVE DRIPLINE PROTECTION.



**GENERAL NOTES**

CONTRACTOR IS RESPONSIBLE FOR ALL LOCATES INCLUDING ALL UNDERGROUND SERVICES PRIOR TO ANY EXCAVATION OR INSTALLATIONS. THE CONTRACTOR IS REQUIRED TO NOTIFY THE VARIOUS UTILITY COMPANIES 48 HOURS PRIOR TO THE COMMENCEMENT OF ANY WORK.

ANY ACCOMPANYING DOCUMENTATION RELATING TO THE LANDSCAPE PLAN AND/OR PRESERVATION PLAN SUCH AS TENDER DOCUMENTS AND CHANGE NOTICES ARE TO BE ENDORSED BY JDB ASSOCIATES LIMITED PRIOR TO THE BEGINNING OF ANY SITE WORKS. IN THE EVENT THAT A DISCREPANCY THE DRAWING SHALL BE ASSUMED CORRECT.

IT IS THE RESPONSIBILITY OF THE PERSON OR PERSONS RESPONSIBLE FOR THE CONSTRUCTED WORKS TO NOTIFY THE LANDSCAPE ARCHITECT WHEN PREPARED FOR ANY REQUIRED INSPECTIONS AND SIGN OFFS.

SCHEDULED MEETINGS SHALL TAKE PLACE AT THE CLOSEST MUTUALLY CONVENIENT TIME.

No.	REVISION	DATE	APRVD.
1.	COMPLETED FOR SUBMISSION TO THE CITY OF BARRIE	April 26, 2024	SIT

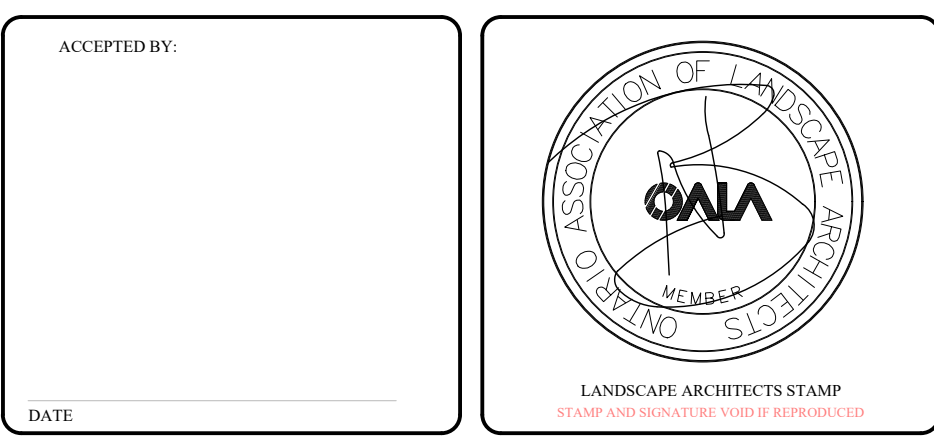
ALL DRAWINGS AND SPECIFICATIONS ARE INSTRUMENTS OF SERVICE AND ARE THE PROPERTY OF JDB ASSOCIATES LIMITED. DRAWINGS ARE NOT TO BE MODIFIED AND/OR REPRODUCED WITHOUT THE WRITTEN CONSENT OF JDB ASSOCIATES LIMITED. REPRODUCTION OF DRAWINGS IN ANY FORM WITHOUT THE CONSENT OF JDB ASSOCIATES LIMITED VOIDS THE DRAWING AT WHICH TIME JDB ASSOCIATES LIMITED ACCEPTS NO LIABILITY FOR THE DRAWING CONTENT OR WORKS RESULTING FROM SAID REPRODUCTION. DRAWINGS MAY BE REPRODUCED BY MUNICIPAL AND GOVERNMENT AGENCIES RESPONSIBLE FOR APPROVALS FOR THEIR OWN USE. JDB ASSOCIATES RESERVES THE RIGHT TO WITHDRAW ANY DRAWING(S) FROM GOVERNMENT OR MUNICIPAL AGENCIES WHETHER APPROVED OR NOT IN THE EVENT THAT ACCOUNTS ARE NOT SETTLED OR REMAIN OUTSTANDING.

IT IS THE RESPONSIBILITY OF THE CONTRACTOR TO VERIFY ALL DIMENSIONS ON THE SITE AND REPORT ANY DISCREPANCIES OR VARIATIONS FROM THE SUPPLIED INFORMATION TO THE LANDSCAPE ARCHITECT WITH THE PROJECT. JDB ASSOCIATES LIMITED IS NOT RESPONSIBLE FOR THE ACCURACY OF SURVEY, ARCHITECTURAL, MECHANICAL, ENGINEERING OR ELECTRICAL INFORMATION SHOWN ON THE DRAWING. FOR FURTHER INFORMATION REFER TO APPROPRIATE SURVEY, ARCHITECTURAL, MECHANICAL, ENGINEERING OR ELECTRICAL DRAWINGS PRIOR TO PROCEEDING WITH ANY WORKS.

THIS DRAWING IS NOT TO BE SCALED.

BASE PLAN REVISED: FEBRUARY, 2024

Client info:  
**County of Simcoe, Social Housing Department**  
1110 Highway #26, Midhurst, Ontario L9X 1N6  
Phone: 705-726-9300 Ext. 1055



**JDB ASSOCIATES LTD.**  
Urban Designers  
Landscape Architects  
Arborists  
274 Burton Ave., Suite 1201  
Barrie, Ontario L4N 5W4  
Fax: 705-722-5660  
Tel: 705-722-6278

20 ROSE STREET  
PART OF LOTS 7 AND 8, REGISTERED PLAN 114  
City of Barrie

**TREE PRESERVATION DETAILS**

SCALE:	DESIGNED BY:	REVIEWED BY:
NTS	SIT	NB
CITY FILE No. D28-087-2022	OUR FILE REF. # 30-23	TP-2