

Table 1. Detailed Tree Inventory

Location: 623 Yonge Street at Big Bay Point Road, Barrie Date: 8 October 2023 Surveyor: AC/BA

Location	Tree #	Common Name	Scientific Name	Diameter at Breast Height (DBH) (cm)	Trunk Integrity	Crown Structure	Crown Verticality	Crown Dieback	Dipline (m)	Minimum Tree Protection Zone (m)	Comments	Preservation Value - High/Low		Proposed Action
												(H, M, L)	(1, 2, 3)	
623 Yonge Street	1	Red Maple	<i>Acer rubrum</i>	20.5	FG	FG	FG	2	1.5	Minor lean, minor epicormic branching	M	3	Remove	
623 Yonge Street	2	Red Maple	<i>Acer rubrum</i>	13	FG	FG	FG	2	1.5	Moderate asymmetrical crown, minor epicormic branching, minor lean	M	3	Remove	
623 Yonge Street	3	Red Maple	<i>Acer rubrum</i>	15	F	FG	FG	2	1.5	Moderate asymmetrical crown, moderate epicormic branching, minor lean	M	3	Remove	
623 Yonge Street	4	Sugar Maple	<i>Acer saccharum</i>	14	F	F	F	20	2	Small root flare, moderate epicormic branching	L	3	Preserve	
623 Yonge Street	5	Fir species	<i>Abies sp.</i>	10	F	F	F	5	1	Minor chlorosis	L	3	Remove	
623 Yonge Street	6	Fir species	<i>Abies sp.</i>	8	F	PF	PF	10	1	Dead leader, minor chlorosis, crook	L	3	Remove	
623 Yonge Street	7	Red Maple	<i>Acer rubrum</i>	20.5	FG	FG	FG	2.5	1.5	Moderate epicormic branching	M	3	Remove	
623 Yonge Street	8	Fir species	<i>Abies sp.</i>	10	P	P	P	30	1	Almost dead	L	3	Remove	
623 Yonge Street	9	Fir species	<i>Abies sp.</i>	17	F	F	F	30	2	Double leader, chlorosis	L	3	Remove	
623 Yonge Street	10	Norway Maple	<i>Acer platanoides</i>	5-10	F	F	F	2	1	Union at base, minor lean	L	3	Remove	
623 Yonge Street	11	Sugar Maple	<i>Acer saccharum</i>	~22	FG	FG	FG	3	1.5	Small root flare, moderate epicormic branching	M	3	Remove	
515 Big Bay Point Road	12	Blue Spruce	<i>Picea pungens</i>	35	G	FG	FG	3	2.5	Minor vine competition	M	3	Preserve	
517 Big Bay Point Road	13	Norway Maple	<i>Acer platanoides</i>	~45	FG	FG	FG	4	2.5	Moderate girdling root, minor pruning wounds	M	3	Preserve	
515 Big Bay Point Road	14	White Spruce	<i>Picea glauca</i>	48	FG	F	F	4	2.5		M	3	Remove	
515 Big Bay Point Road	15	White Spruce	<i>Picea glauca</i>	47	FG	F	F	10	4	2.5	M	3	Preserve	
517 Big Bay Point Road	16	Black Walnut	<i>Juglans nigra</i>	15	FG	FG	FG	1.5	1.5	Moderate vine competition	L	3	Preserve	
515 Big Bay Point Road	17	Balsam Fir	<i>Abies balsamea</i>	43	FG	FG	FG	3	2.5	Minor stem wound with decay, minor broken branches, moderate vine competition	M	3	Remove	
515 Big Bay Point Road	18	Blue Spruce	<i>Picea pungens</i>	41	F	FG	FG	3	2.5	Moderate vine competition, minor bow	M	3	Remove	
515 Big Bay Point Road	19	Manitoba Maple	<i>Acer negundo</i>	12.5	F	F	F	3.5	1.5	Moderate lean	L	3	Remove	
515 Big Bay Point Road	20	Eastern Red Cedar	<i>Juniperus virginiana</i>	34	FG	F	F	40	3	2	Sparse, minor lean	L	3	Remove
515 Big Bay Point Road	21	Sugar Maple	<i>Acer saccharum</i>	44	FG	F	F	5	2.5	Minor epicormic branching, moderate vertical scaffold limbs with included bark	M	3	Remove	
623 Yonge Street	22	Sugar Maple	<i>Acer saccharum</i>	30, 19, 36, 24, 19, 15	PF	PF	PF	5	2.5	Small root flare, union near base with heavily included bark, vertical scaffold limbs with moderate included bark, moderate pruning wounds with decay, moderate pruning wounds, moderate asymmetrical crown due to competition	L	3	Remove	
623 Yonge Street	23	Norway Maple	<i>Acer platanoides</i>	39, 39, 5, 27, 17	PF	PF	PF	4	3	Moderate epicormic branching, union at 0.25m with moderate included bark, deadwood with fruiting bodies, lean, moderate cracks	L	3	Remove	
623 Yonge Street	24	Fir species	<i>Abies sp.</i>	9	FG	FG	FG	1	1		M	3	Remove	
623 Yonge Street	25	Fir species	<i>Abies sp.</i>	9	F	PF	PF	60	1	1	L	3	Remove	
623 Yonge Street	26	Red Oak	<i>Quercus macrocarpa</i>	18.5	G	FG	FG	2	1.5	Minor epicormic branching	M	3	Remove	
623 Yonge Street	27	Blue Spruce	<i>Picea pungens</i>	37	FG	F	F	3	2	Moderate vine competition	M	3	Remove	
623 Yonge Street	P28	Eastern White Cedar	<i>Thuja occidentalis</i>	6.5-16	F	F	F	1	1.5	~21 trees, significant vine competition, ~13 trees with raised crowns	L	3	Remove - portion	
517 Big Bay Point Road	29	Manitoba Maple	<i>Acer negundo</i>	~30, 25, 19	F	F	F	3	2	Moderate pruning wounds with decay, union near base	L	3	Preserve	
623 Yonge Street	30	Manitoba Maple	<i>Acer negundo</i>	14.9	PF	PF	PF	3.5	1.5	Two trees, moderate lean, major stem wound with decay, moderate epicormic branching	L	3	Preserve	
521 Big Bay Point Road	31	Sugar Maple	<i>Acer saccharum</i>	~10	G	G	G	2	1		M	3	Preserve	
521 Big Bay Point Road	32	Sugar Maple	<i>Acer saccharum</i>	~9	G	G	G	2	1		M	3	Preserve	
623 Yonge Street	P33	Eastern White Cedar	<i>Thuja occidentalis</i>	5-11	FG	FG	FG	2	1.5	2 trees, minor deadwood, minor lean	M	3	Preserve	
649 Yonge Street	34	Red Maple	<i>Acer rubrum</i>	18.5	G	FG	FG	3.5	1.5		M	3	Preserve	
649 Yonge Street	35	Red Maple	<i>Acer rubrum</i>	12	G	FG	FG	2	1.5	Minor asymmetrical crown	M	3	Preserve	
623 Yonge Street	36	Australian Pine	<i>Pinus nigra</i>	25	G	FG	FG	3	1.5		M	3	Preserve	
623 Yonge Street	37	Australian Pine	<i>Pinus nigra</i>	26	FG	FG	FG	2	2	Minor lean	M	3	Preserve	
623 Yonge Street	38	Apple species	<i>Malus sp.</i>	12.5, 12 (17)	F	F	F	2.5	1.5	Union near base with moderate included bark, moderate epicormic branching, moderate cracks	L	3	Preserve	
623 Yonge Street	39	Australian Pine	<i>Pinus nigra</i>	~14	G	G	G	2	1.5		M	3	Preserve	
623 Yonge Street	40	Freeman Maple	<i>Acer x freemanii</i>	25	FG	FG	FG	3.5	1.5	Moderate epicormic branching, minor lean	M	3	Preserve	
623 Yonge Street	41	Freeman Maple	<i>Acer x freemanii</i>	23	FG	FG	FG	3	1.5	Minor asymmetrical crown, minor lean, moderate epicormic branching	M	3	Preserve	
623 Yonge Street	42	Fir species	<i>Abies sp.</i>	11	DEAD						L	3	Remove	
623 Yonge Street	43	Fir species	<i>Abies sp.</i>	10	G	G	G	1	1		M	3	Preserve	

**NOTICE OF TREE REMOVALS**  
ALL VEGETATION REMOVAL WORK SHALL OCCUR IN ACCORDANCE WITH BY-LAW 2014-115

OWNER (name of property or land owner) - [blank]  
PROXIMATE COUNCIL Elected (for residential or company related) - [blank]  
FOR FULL DETAILS OF TREE REMOVAL CONTACT: [blank] (within the 2 week removal period)

Barrie TREE REMOVAL NOTIFICATION TEMPLATE 2 BSD-1230

**TREE PRESERVATION AREA**  
NO UNAUTHORIZED TREE CUTTING, REMOVALS, OR DISTURBANCE IS PERMITTED IN THIS AREA

Barrie TREE PRESERVATION AREA TEMPLATE 1 BSD-1231

**TREE PRESERVATION FENCING**

Barrie TREE PRESERVATION FENCING 1 BSD-1232

**LIMIT OF TREE PROTECTION FOR ACTIVITIES ON MUNICIPAL RIGHT-OF-WAYS**

Barrie LIMIT OF TREE PROTECTION FOR ACTIVITIES ON MUNICIPAL RIGHT-OF-WAYS 1 BSD-1234

**LIMIT OF TREE PRESERVATION FOR DEVELOPMENT APPROVALS**

Barrie LIMIT OF TREE PRESERVATION FOR DEVELOPMENT APPROVALS 1 BSD-1235

**TREE HOARDING DETAIL FOR ACTIVITIES ON MUNICIPAL RIGHT-OF-WAYS**

Barrie TREE HOARDING DETAIL FOR ACTIVITIES ON MUNICIPAL RIGHT-OF-WAYS 1 BSD-1236

**LEGEND**

- 1 Tree Identification Number\*
- Surveyed Tree Location with Dipline By Arborist
- Tree Location and Dipline By Arborist
- Minimum Tree Protection Zone (mTPZ)\*
- Required Tree Preservation Fencing (BSD-1232)
- ✗ Required Tree Removal

\*Please refer to Table 1 for the detailed tree inventory and minimum tree protection zone distances. Trees were located using the topographic survey provided or aerial photo interpretation and estimations made in the field.

**TREE PRESERVATION NOTES**

No alteration or disturbance to existing grades, storage of construction materials or equipment, storage of soil, construction waste or debris, disposal of any deleterious materials, or movement of vehicles, equipment or pedestrians is permitted within the minimum Tree Protection Zone.

Bi-monthly Tree Preservation Fencing inspections must be conducted and reports submitted to the City of Barrie during the period of active construction on the site.

It is the applicants' responsibility to discuss potential impacts to trees located near or wholly on adjacent properties or on shared boundary lines with their neighbours. Should such trees be injured to the point of instability or death, the applicant may be held responsible through civil action.

Prior to site disturbance, the owner must confirm that no migratory birds are making use of the site for nesting. The owner must ensure that the works are in conformance with the Migratory Bird Convention Act and no migratory bird nests will be impacted by the proposed work. No trees may be removed during the period of March 15 to August 31.



Submission and Revision Notes

No.	Description	Date	By
3			
2			
1	Report and Plan Submission	21 December 2022	AC

Source Data: IBW Surveyors (survey), K. Paul Architect Inc. (site plan)

**Project:**  
623 Yonge Street and 515 Big Bay Point Road (D28-039-2023)  
623 Yonge Street, Barrie, ON

**Client:**  
Suncor c/o I.G.P. Realty Advisors Inc.  
19 Galsworthy Avenue  
Scarborough, ON  
M1R 2N5

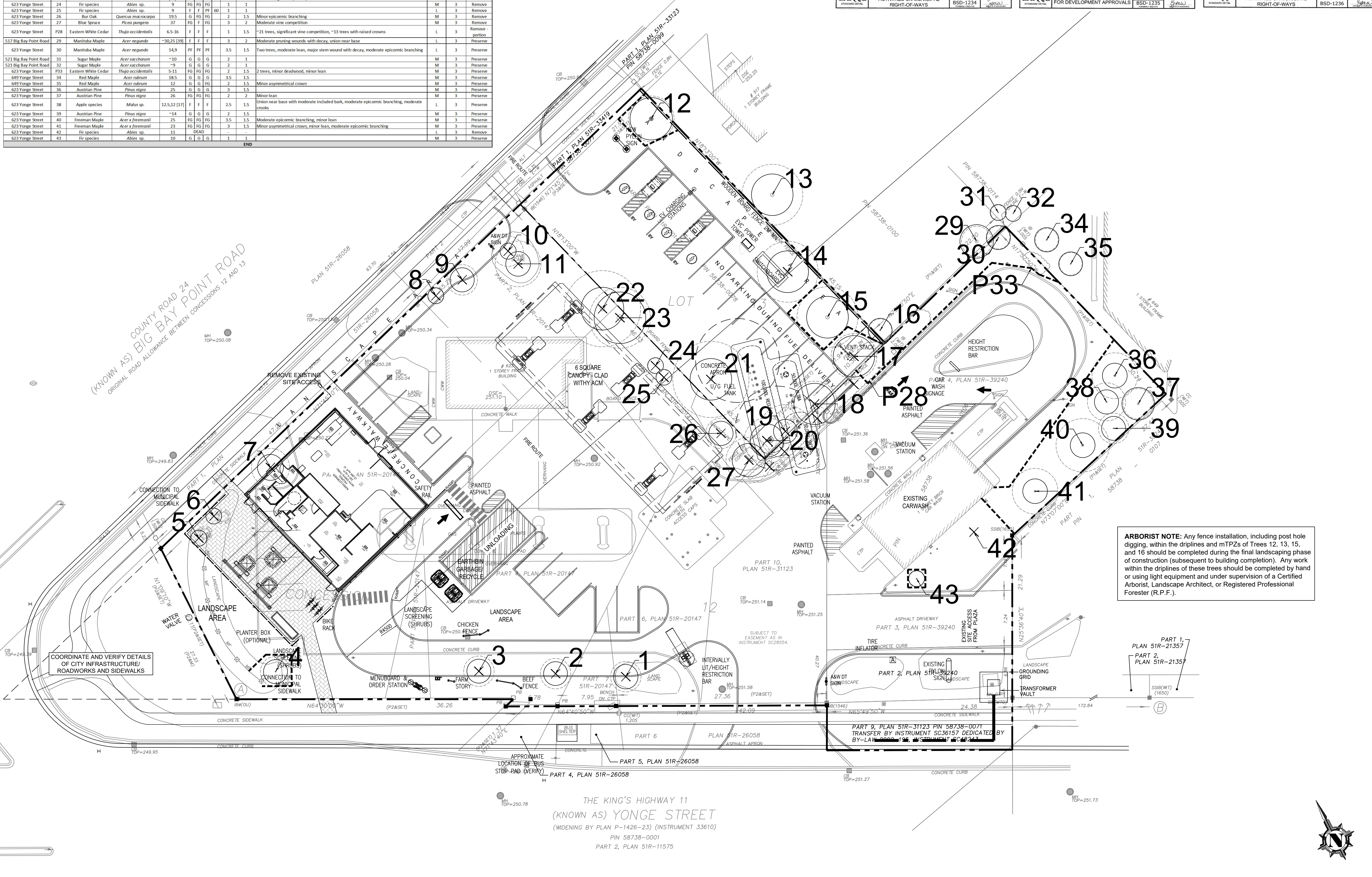
**Date:**  
21 December 2023

**Amy Choi Consulting**  
www.achiconsulting.ca  
info@achiconsulting.ca  
647.983.8817

**ISA Certified Arborist**  
Amy Choi, B.Sc. (Env.), M.Sc.F.  
ISA Certified Arborist #ON-1609A  
ISA Tree Risk Assessment Qualified

**TREE PRESERVATION PLAN**

Drawing TP-1 Scale 1:250



**ARBORIST NOTE:** Any fence installation, including post hole digging, within the dielines and mTPZs of Trees 12, 13, 15 and 18 should be completed during the final landscaping phase of construction (subsequent to building completion). Any work within the dielines of these trees should be completed by hand or using light equipment and under supervision of a Certified Arborist, Landscape Architect, or Registered Professional Forester (R.P.F.).

THE KING'S HIGHWAY 11  
(KNOWN AS) YONGE STREET  
(WIDENING BY PLAN P-1426-23) (INSTRUMENT 33610)  
PIN 58738-0001  
PART 2, PLAN 51R-11575

