

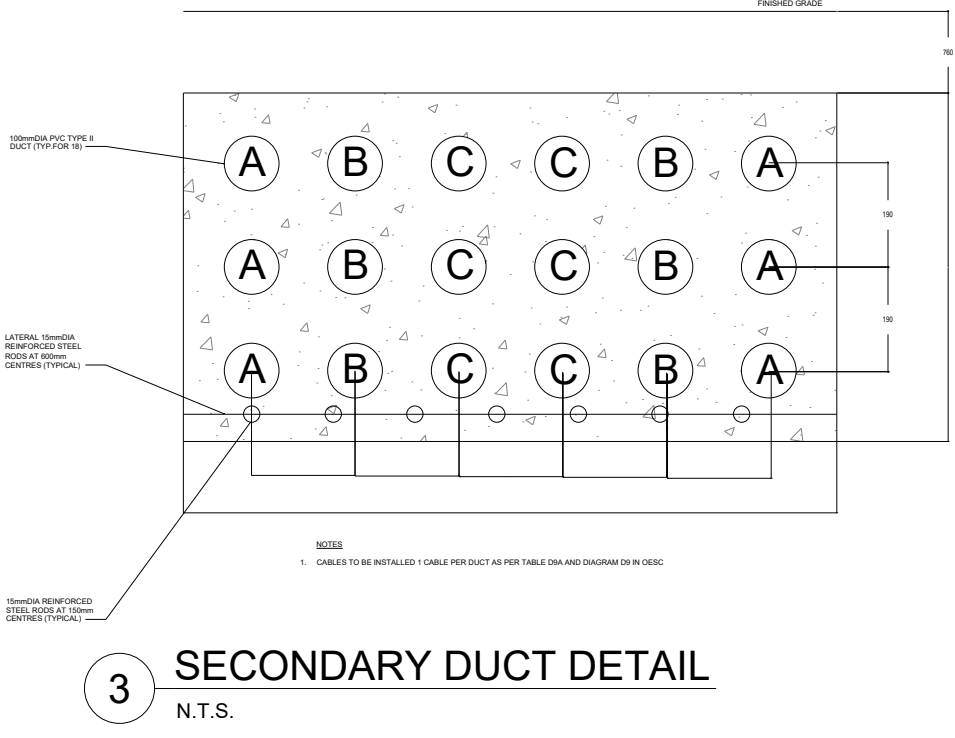
BARRIER-FREE PARKING STALLS TO BE SIGNED (R6-93) AND MARKED IN ACCORDANCE WITH ONTARIO TRAFFIC MANUAL BOOK 5 - REGULATORY SIGNS

1 SITE PLAN - ELECTRICAL
1:350

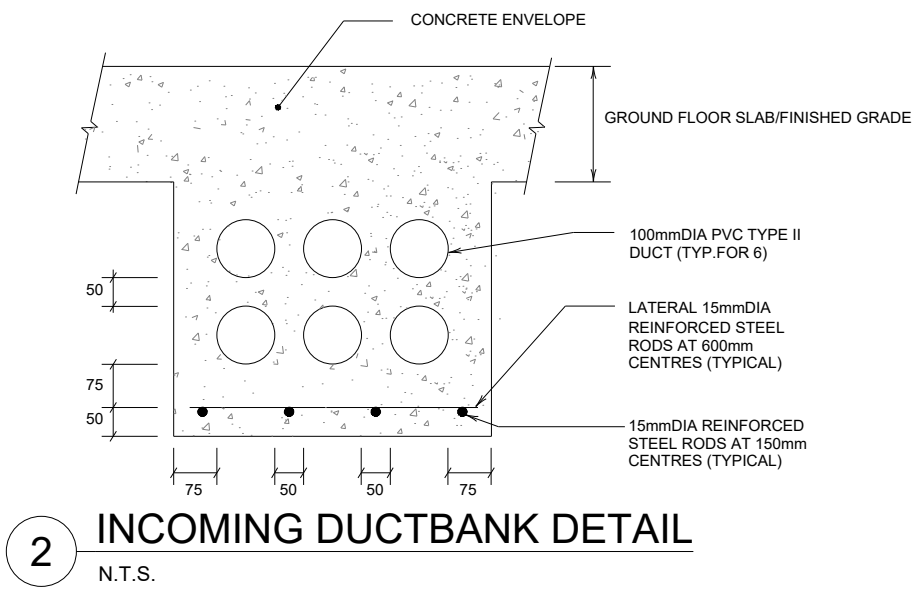
ELECTRICAL SITE PLAN NOTES

- REFER TO ARCHITECTURAL ELEVATION DRAWINGS FOR EXACT LOCATION OF BUILDING MOUNTED LIGHTING FIXTURES
- RUN MINIMUM #8 AWG WIRE TO EXTERIOR LIGHTING FIXTURES.
- ELECTRICAL CONTRACTOR TO INSTALL PRIMARY DUCT BANK FROM TRANSFORMER TO PROPERTY LINE AS PER NT POWER STANDARDS.
- CLEARANCE AROUND TRANSFORMER TO BE MAINTAINED AS PER NT POWER STANDARDS.
- ELECTRICAL CONTRACTOR SHALL CONTACT NT POWER FOR INSPECTION OF THE CIVIL WORK (TRANSFORMER FOUNDATION, GROUND GRID, BOLLARDS AND PRIMARY CONCRETE ENCASED DUCT BANK.
- SECONDARY CABLES AND LUGS SHALL BE AS PER NT POWER STANDARDS

4 INCOMING HYDRO SERVICE DETAIL
N.T.S.



3 SECONDARY DUCT DETAIL
N.T.S.



2 INCOMING DUCTBANK DETAIL
N.T.S.

Queen's Quay Terminal
207 Queen's Quay West, Suite 615
Toronto, Ontario, M5J 1A7
Tel: 416-598-2920
Fax: 416-598-5394
www.mcw.com

SEAL:

2024/08/23
PROVINCE OF ONTARIO

PERMIT:

KEY PLAN:

1	ISSUED FOR SPA	2024-08-23
No.	Issuance	Date

CROWN (BARRIE) DEVELOPMENTS INC.	
1012 YONGE STREET	
PROJECT NO:	DRAWN:
24223-01	RL
SCALE:	CHECKED:
1:350	SB
ISSUED:	
2024-08-23	
SHEET NAME:	
ELECTRICAL SITE PLAN	
SHEET NUMBER:	
E001	