

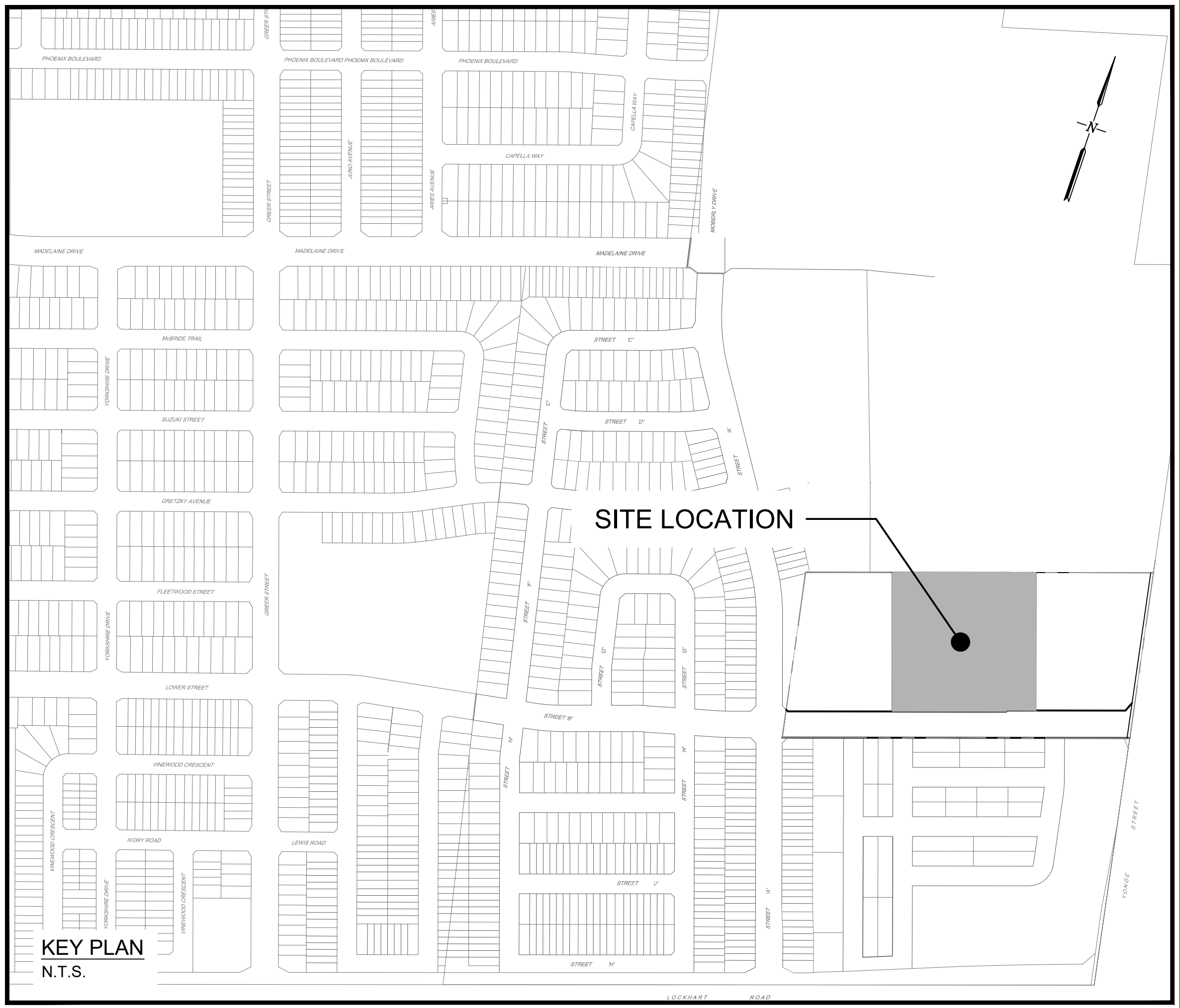
CROWN (BARRIE) DEVELOPMENTS INC.

1012 YONGE STREET

CROWN (BARRIE) DEVELOPMENTS INC.
400 CREDITSTONE ROAD, UNIT 37
CONCORD, ON
L4K 3Z3



R.J. Burnside & Associates Limited
128 Wellington St. W., Suite 301
Barrie, Ontario, L4N 8J6
telephone 1-800-265-9662
web www.rjburnside.com

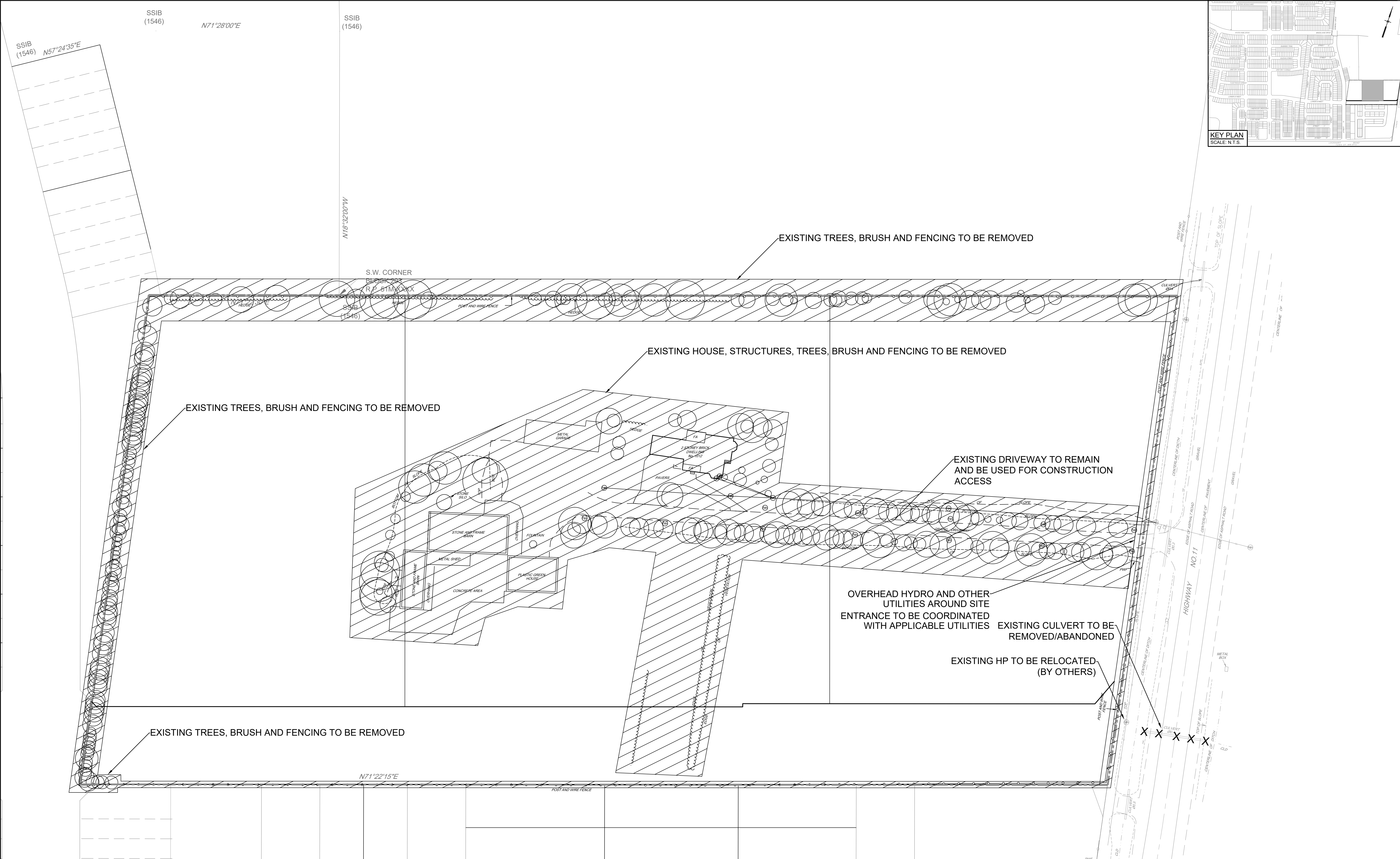


DRAWING INDEX

SHEET NUMBER	SHEET TITLE
REM1	REMOVALS PLAN
GRD1	SITE GRADING PLAN
SRV1	SERVICING PLAN
SWM1	INTERIM POND PLAN
SWM2	INTERIM POND DETAILS
ESC1	EROSION AND SEDIMENT CONTROL
ESC2	EROSION AND SEDIMENT CONTROL NOTES AND DETAILS

Burnside Project No. 300057940

ISSUED FOR CLIENT COORDINATION - 24/08/06



1. This drawing is the exclusive property of R. J. Burnside & Associates Limited. The reproduction of any part without prior written consent of this office is strictly prohibited.

2. The contractor shall verify all dimensions, levels, and datums on site and report any discrepancies or omissions to this office prior to construction.

3. This drawing is to be read and understood in conjunction with all other plans and documents applicable to this project.

No.	Issue / Revision	Date
1	ISSUED FOR CLIENT COORDINATION	24/08/06

Auth: EG

SITE PLAN
PREPARED BY: SRN ARCHITECTS INC.
DATE: 2024-05-22
TOPOGRAPHIC & LEGAL
PREPARED BY: GUIDO PAPA SURVEYING
TOPO DATE: JANUARY 4, 2019
BENCHMARK NOTES
ELEVATIONS SHOWN HEREON ARE GEODETIC AND ARE DERIVED FROM STATION 03120110014 (COSINE), HAVING AN ELEVATION OF 268.081m AND VERIFIED BY STATION 03120110013, HAVING AN ELEVATION OF 252.807m.

LEGEND:
LIMIT OF REMOVALS
LIMIT OF CONSTRUCTION
X X X X ITEM TO BE REMOVED/ABANDONED

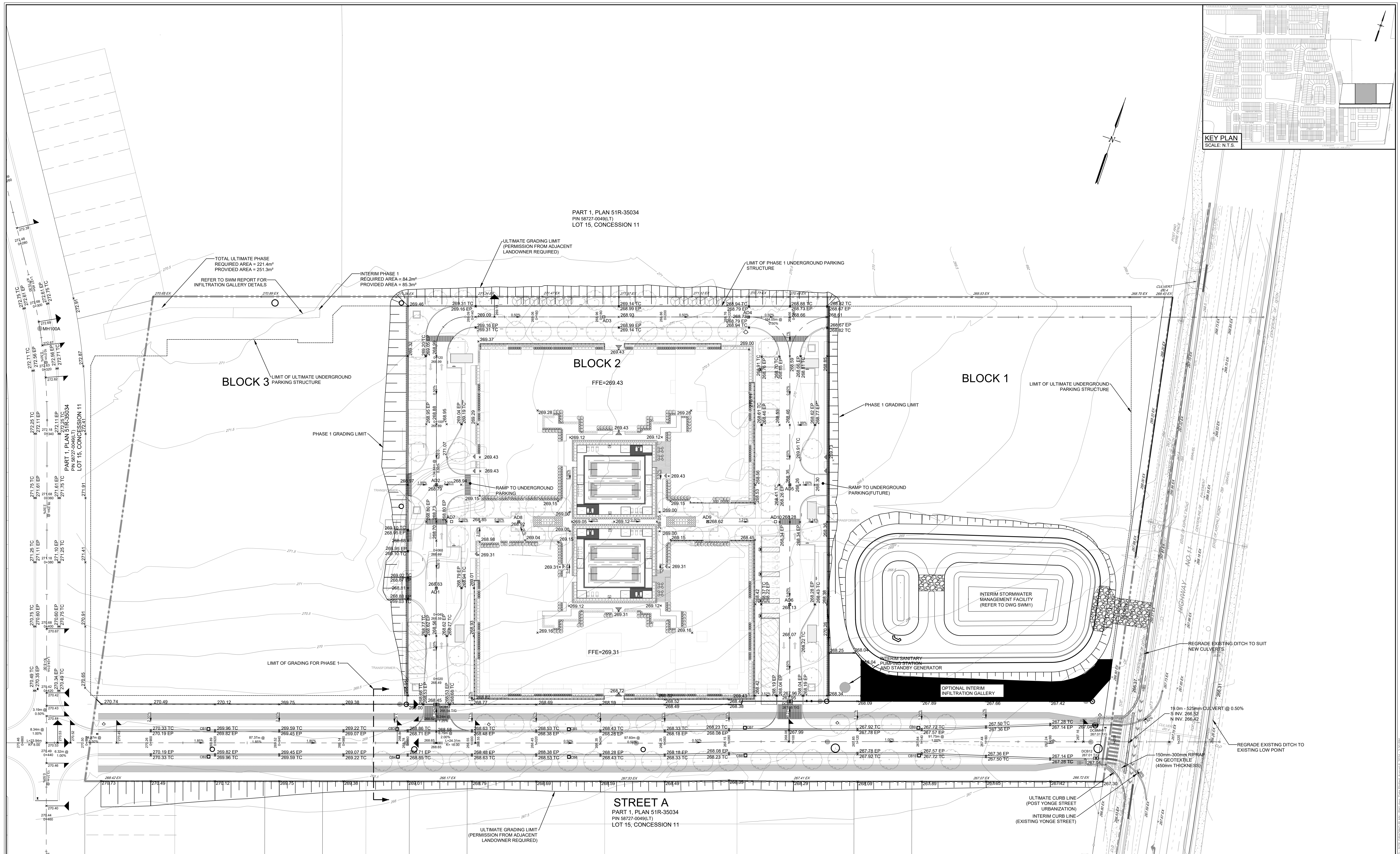
BURNSIDE
R. J. Burnside & Associates Limited
128 Wellington St. W., Suite 301
Barrie, Ontario, L4N 8J6
telephone 1-800-355-9862
web www.rjburnside.com

Client
CROWN (BARRIE) DEVELOPMENTS INC.
400 CREDITSTONE ROAD, UNIT 37
CONCORD, ON
L4K 3Z3

Drawing Title
1012 YONGE STREET
REMOVALS PLAN

Drawn	Checked	Designed	Checked	Date
S.D.	E.G.	S.D.	E.G.	24/06/11
Project No. 300057940	Contract No.	Revision No. 0	Drawing No. REM1	

Scale
1:500
0 5.0 10.0 20.0 30.0m



1. This drawing is the exclusive property of R. J. Burnside & Associates Limited. The reproduction of any part without prior written consent of this office is strictly prohibited.	No.	Issue / Revision	Date	Auth.	SITE PLAN	Auth.	Drawing Title	Drawing No.		
					PREPARED BY: SRN ARCHITECTS INC. DATE: 2024-05-22				LEGEND:	Drawing Title
					1 ISSUED FOR CLIENT COORDINATION					
2. The contractor shall verify all dimensions, levels, and datums on site and report any discrepancies or omissions to this office prior to construction.					TOPOGRAPHIC & LEGAL PREPARED BY: GUIDO PAPA SURVEYING TOPO DATE: JANUARY 4, 2019					
3. This drawing is to be read and understood in conjunction with all other plans and documents applicable to this project.					BENCHMARK NOTES ELEVATIONS SHOWN HEREON ARE GEODETIC AND ARE DERIVED FROM STATION 03120110014 (COSINE), HAVING AN ELEVATION OF 268.681m AND VERIFIED BY STATION 03120110015, HAVING AN ELEVATION OF 252.807m.					
								</		

NOTES:

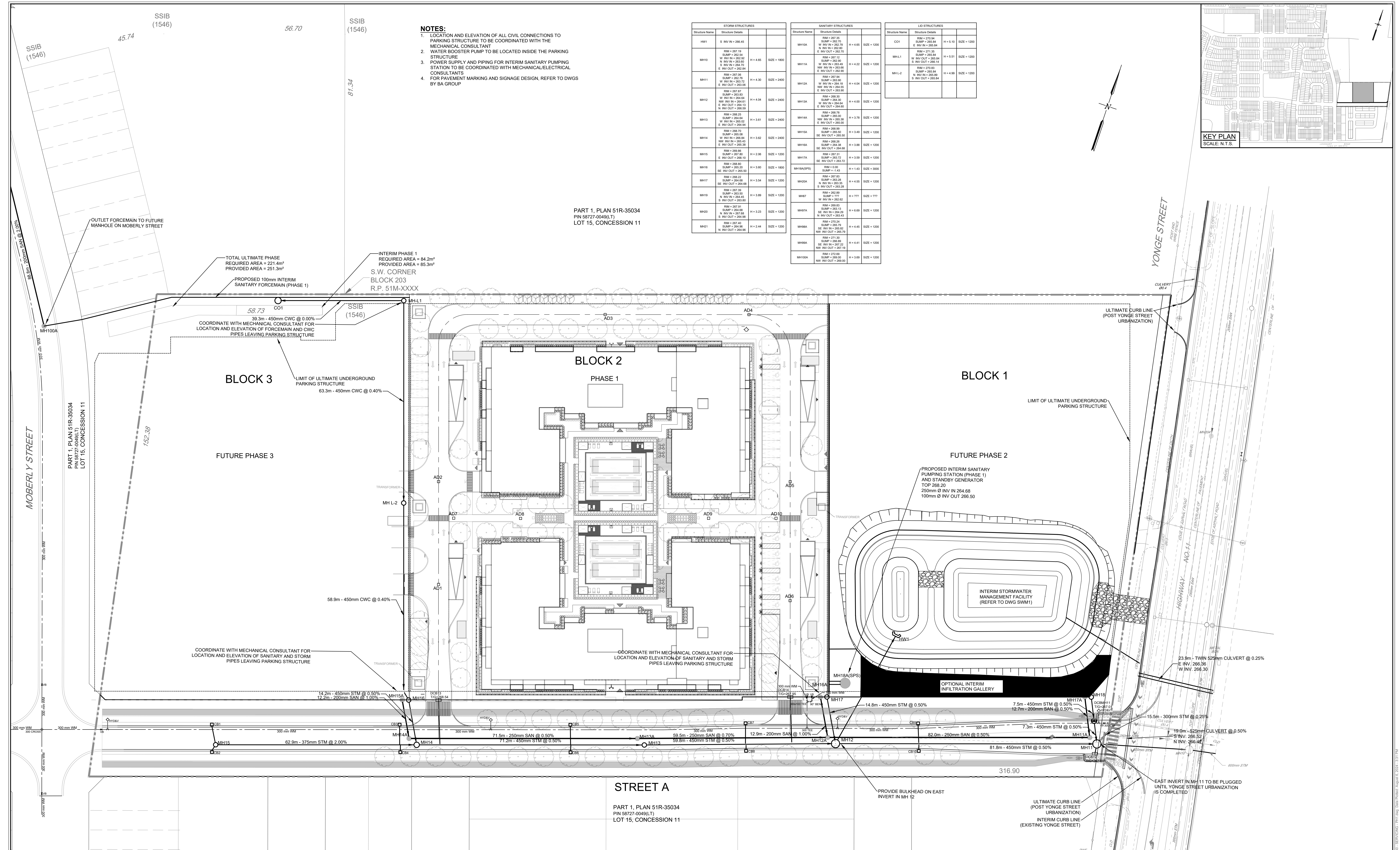
1. LOCATION AND ELEVATION OF ALL CIVIL CONNECTIONS TO PARKING STRUCTURE TO BE COORDINATED WITH THE MECHANICAL CONSULTANT
2. WATER BOOSTER PUMP TO BE LOCATED INSIDE THE PARKING STRUCTURE
3. POWER SUPPLY AND PIPING FOR INTERIM SANITARY PUMPING STATION TO BE COORDINATED WITH MECHANICAL/ELECTRICAL CONSULTANTS
4. FOR PAVEMENT MARKING AND SIGNAGE DESIGN, REFER TO DWGS BY BA GROUP

STORM STRUCTURES		
Structure Name	Structure Details	
MH1	S INV IN = 268.45 RM = 267.19 SLUMP = 262.44 W INV IN = 262.78 N INV IN = 262.80 E INV OUT = 262.70	
MH10	RM = 267.19 SLUMP = 262.44 W INV IN = 262.82 N INV IN = 262.80 E INV OUT = 262.84 H = 4.65 SIZE = 1800	
MH11	RM = 267.06 SLUMP = 262.76 W INV IN = 262.72 N INV IN = 262.72 E INV OUT = 262.84 H = 4.30 SIZE = 2400	
MH12	RM = 267.87 SLUMP = 264.84 W INV IN = 264.64 N INV IN = 264.70 E INV OUT = 264.13 H = 4.04 SIZE = 2400	
MH13	RM = 268.25 SLUMP = 264.84 W INV IN = 265.02 N INV IN = 265.02 E INV OUT = 265.00 H = 3.61 SIZE = 2400	
MH14	RM = 268.70 SLUMP = 265.08 W INV IN = 265.84 N INV IN = 265.43 E INV OUT = 265.36 H = 3.62 SIZE = 2400	
MH15	RM = 269.86 SLUMP = 267.80 E INV OUT = 268.10 H = 2.06 SIZE = 1200	
MH16	RM = 268.80 SLUMP = 265.20 SE INV OUT = 265.90 H = 3.80 SIZE = 1800	
MH17	RM = 269.20 SLUMP = 264.66 SE INV OUT = 264.66 H = 3.54 SIZE = 1200	
MH18	RM = 267.39 SLUMP = 262.80 N INV IN = 264.45 S INV OUT = 263.90 H = 3.89 SIZE = 1200	
MH20	RM = 267.81 SLUMP = 264.66 N INV IN = 265.86 S INV OUT = 265.86 H = 3.23 SIZE = 1200	
MH21	RM = 267.40 SLUMP = 264.36 N INV OUT = 264.96 H = 2.44 SIZE = 1200	

SANITARY STRUCTURES		
Structure Name	Structure Details	
MH10A	RM = 267.35 SLUMP = 267.19 W INV IN = 262.78 N INV IN = 262.80 E INV OUT = 262.70 H = 4.65 SIZE = 1200	
MH11A	RM = 267.06 SLUMP = 262.76 W INV IN = 262.72 N INV IN = 262.72 E INV OUT = 262.84 H = 4.32 SIZE = 1200	
MH12A	RM = 267.84 SLUMP = 264.84 W INV IN = 264.18 N INV IN = 264.70 E INV OUT = 264.13 H = 4.04 SIZE = 1200	
MH13A	RM = 268.25 SLUMP = 264.84 W INV IN = 265.00 N INV IN = 265.00 E INV OUT = 265.00 H = 4.00 SIZE = 1200	
MH14A	RM = 268.70 SLUMP = 265.08 W INV IN = 265.84 N INV IN = 265.36 E INV OUT = 265.00 H = 3.78 SIZE = 1200	
MH15A	RM = 268.69 SLUMP = 265.00 SE INV OUT = 265.90 H = 3.40 SIZE = 1200	
MH16A	RM = 268.80 SLUMP = 264.36 SE INV OUT = 264.66 H = 3.88 SIZE = 1200	
MH17A	RM = 267.31 SLUMP = 263.72 SE INV OUT = 263.72 H = 3.59 SIZE = 1200	
MH18A(SPS)	RM = 0.00 SLUMP = 1.40 H = 1.43 SIZE = 3000	
MH20A	RM = 267.83 SLUMP = 263.28 N INV IN = 263.20 S INV OUT = 263.28 H = 4.55 SIZE = 1200	
MH27	RM = 262.80 SLUMP = 777 W INV IN = 262.82 H = 777 SIZE = 777	
MH27A	RM = 265.83 SLUMP = 263.13 SE INV IN = 264.29 W INV IN = 265.43 H = 6.69 SIZE = 1200	
MH28A	RM = 270.24 SLUMP = 265.79 SE INV IN = 265.82 NW INV IN = 265.79 H = 4.45 SIZE = 1200	
MH29A	RM = 271.30 SLUMP = 266.89 SE INV IN = 267.22 NW INV IN = 267.19 H = 4.41 SIZE = 1200	
MH10A	RM = 270.60 SLUMP = 269.00 NW INV IN = 269.00 H = 3.89 SIZE = 1200	

LID STRUCTURES		
Structure Name	Structure Details	
CD1	RM = 270.34 SLUMP = 265.84 E INV IN = 265.84 H = 5.10 SIZE = 1000	
MH-L1	RM = 271.35 SLUMP = 265.84 W INV OUT = 265.84 S INV OUT = 265.14 H = 5.51 SIZE = 1000	
MH-L2	RM = 270.83 SLUMP = 265.84 N INV IN = 265.89 S INV OUT = 265.84 H = 4.99 SIZE = 1000	

PART 1, PLAN 51R-35034
PIN 58727-0049(LT)
LOT 15, CONCESSION 11



STREET A

PART 1, PLAN 51R-35034
PIN 58727-0049(LT)
LOT 15, CONCESSION 11

1. This drawing is the exclusive property of R. J. Burnside & Associates Limited. The reproduction of any part without prior written consent of this office is strictly prohibited.
2. The contractor shall verify all dimensions, levels, and datums on site and report any discrepancies or omissions to this office prior to construction.
3. This drawing is to be read and understood in conjunction with all other plans and documents applicable to this project.

No.	Issue / Revision	Date	Auth.
1	ISSUED FOR CLIENT COORDINATION	24/08/06	EG

SITE PLAN
PREPARED BY: SRN ARCHITECTS INC.
DATE: 2024-05-22
TOPOGRAPHIC & LEGAL
PREPARED BY: GUIDO PAPA SURVEYING
TOPO DATE: JANUARY 4, 2019
BENCHMARK NOTES
ELEVATIONS SHOWN HEREON ARE
GEODETIC AND ARE DERIVED FROM
STATION 03120110014 (COSINE), HAVING
AN ELEVATION OF 268.681m AND VERIFIED
BY STATION 03120110013, HAVING AN
ELEVATION OF 252.807m.

LEGEND:

- MH13 PROPOSED STORM SEWER & MANHOLE
- MH13A PROPOSED SANITARY SEWER & MANHOLE
- PROPOSED SINGLE CATCHBASIN / AREA DRAIN
- PROPOSED SIDE INLET CATCHBASIN
- PROPOSED DOUBLE CATCHBASIN
- PROPOSED WATERMAIN
- PROPOSED HYDRANT
- PROPOSED VALVE AND BOX
- LIMIT OF CONSTRUCTION



R. J. Burnside & Associates Limited
128 Wellington St. W., Suite 301
Barrie, Ontario, L4N 6J6
Telephone 1-800-255-9862
web www.rjburnside.com

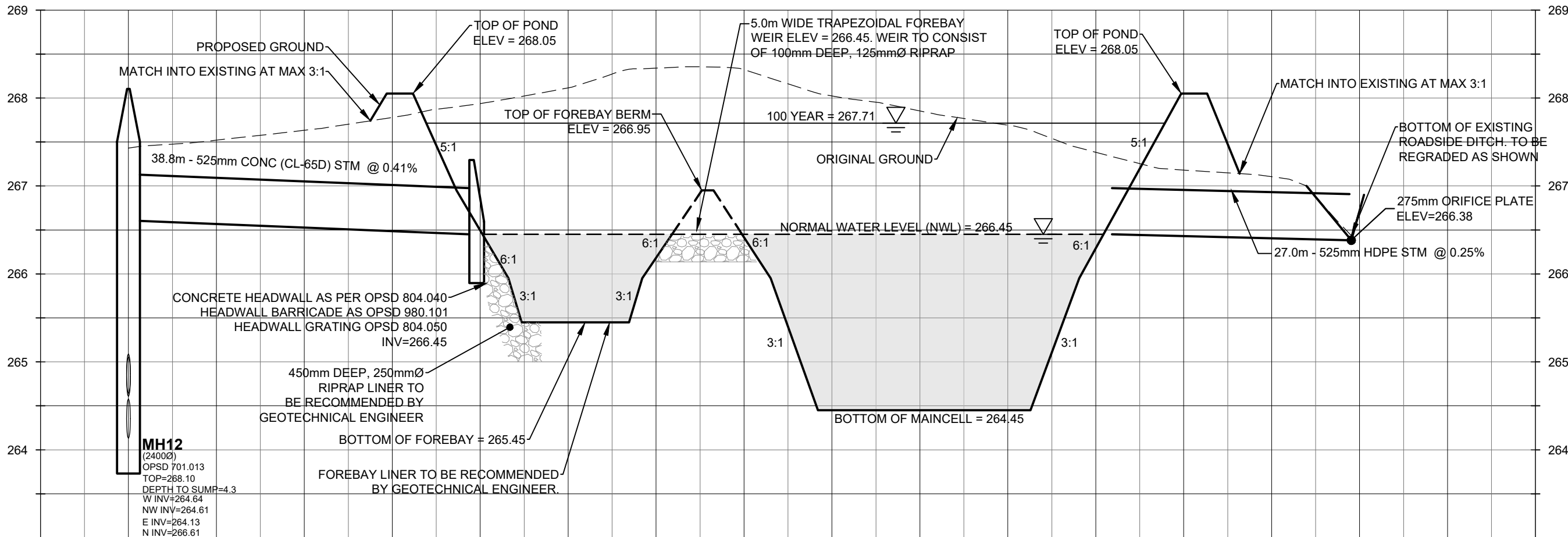
Client
CROWN (BARRIE) DEVELOPMENTS INC.
400 CREDITSTONE ROAD, UNIT 37
CONCORD, ON
L4K 3Z3

1012 YONGE STREET

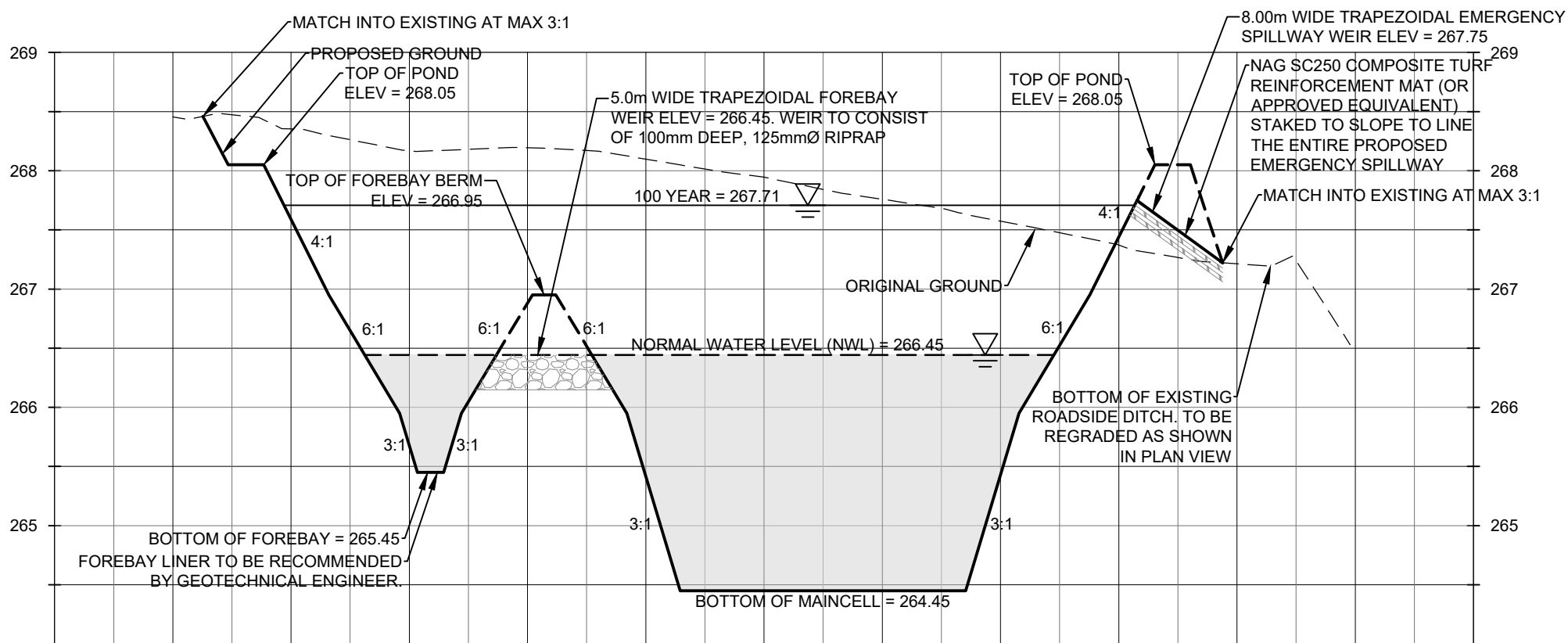
SERVICING PLAN

Drawn	Checked	S.D.	Designed	Checked	Date	Drawing No.
S.D.	E.G.	S.D.	E.G.		24/06/11	
Project No.	Contract No.	Contract No.	Revision No.			
300057940			0			
Scale	1:500	0	5.0	10.0	20.0	30.0m

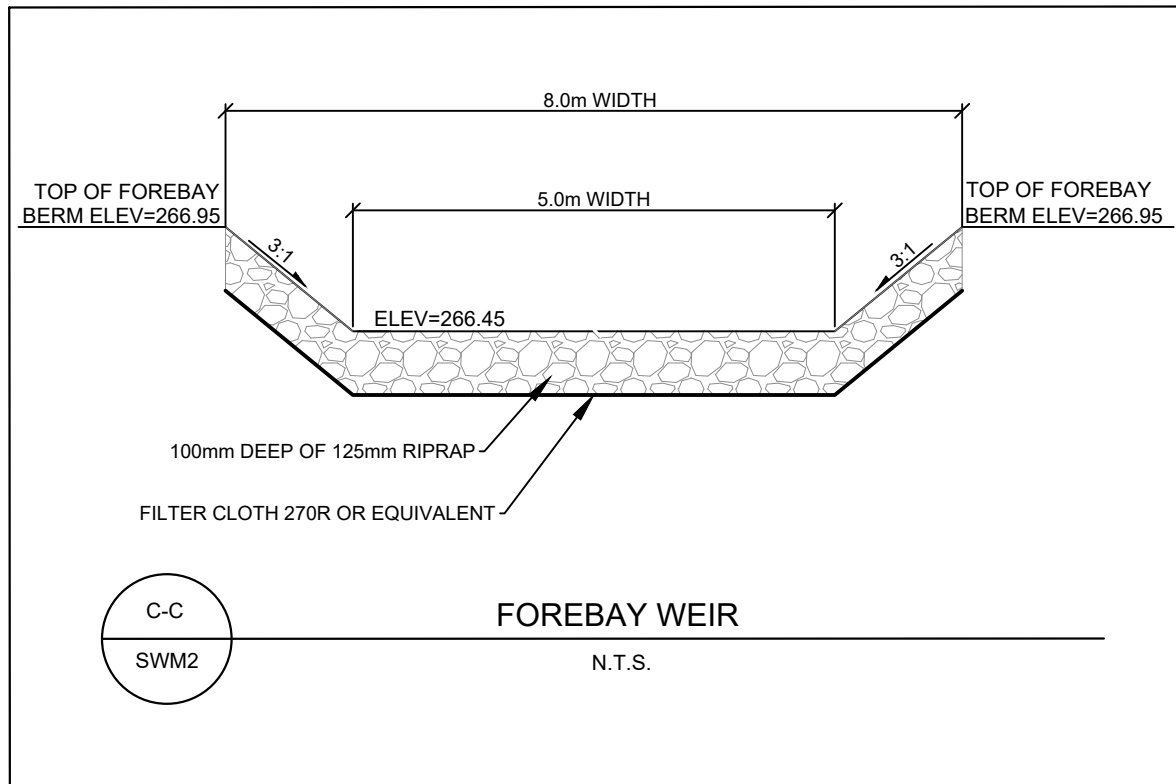
SRV1



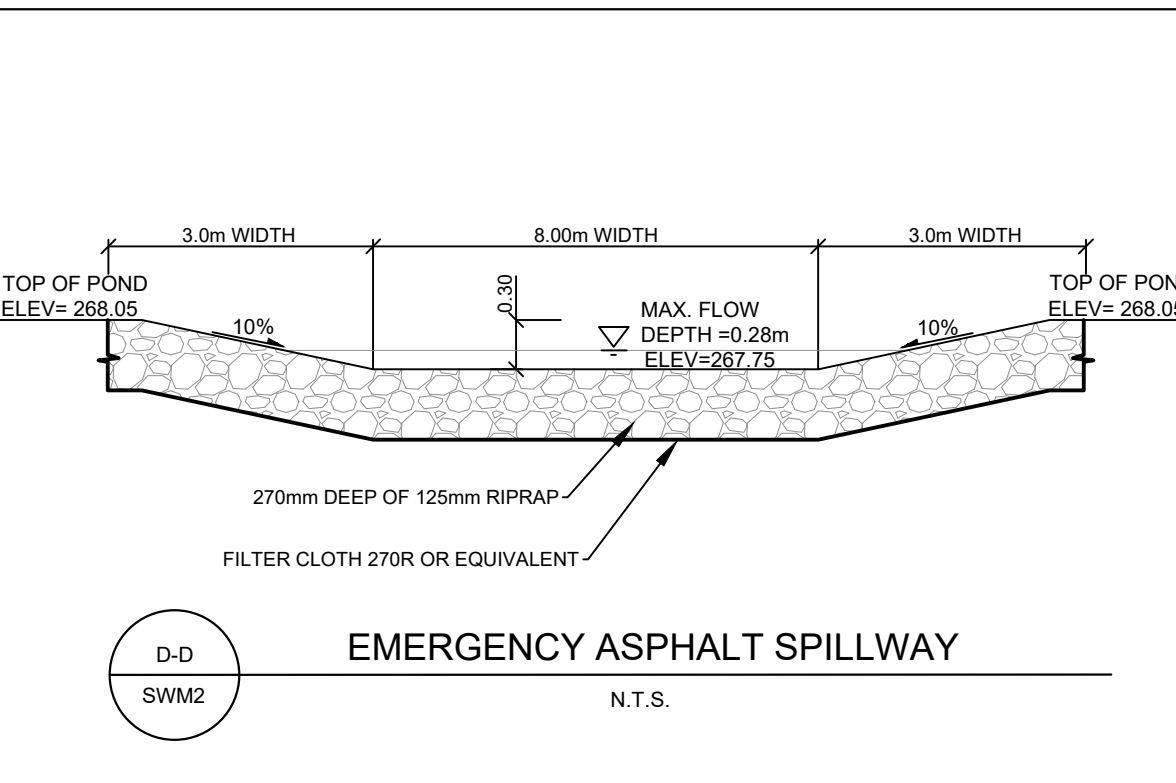
A-A SWMF SECTION
SCALE 1:500H 1:50V



B-B SWMF SECTION
SCALE 1:500H 1:50V



- TOPSOIL
1. ALL TOPSOIL TO MEET THE CITY OF BARRIE STANDARDS
 2. BERM SLOPES TO BE FINISHED WITH A 450mm DEPTH OF TOPSOIL EXTENDING 1m INTO THE POND.
 3. THE BOTTOM OF THE MAINCELL OF POND TO HAVE A MINIMUM DEPTH OF TOPSOIL OF 200mm.
 4. REFER TO LANDSCAPING DRAWING FOR SEEDING AND PLANTING NOTES



1. This drawing is the exclusive property of R. J. Burnside & Associates Limited. The reproduction of any part without prior written consent of this office is strictly prohibited.
2. The contractor shall verify all dimensions, levels, and datums on site and report any discrepancies or omissions to this office prior to construction.
3. This drawing is to be read and understood in conjunction with all other plans and documents applicable to this project.

No.	Issue / Revision	Date
1	ISSUED FOR CLIENT COORDINATION	24/08/06

SITE PLAN
PREPARED BY: SRN ARCHITECTS INC.
DATE: 2024-05-22
TOPOGRAPHIC & LEGAL
PREPARED BY: GUIDO PAPA SURVEYING
TOPO DATE: JANUARY 4, 2019
BENCHMARK NOTES
ELEVATIONS SHOWN HEREON ARE
GEODETIC AND ARE DERIVED FROM
STATION 03120110014 (COSINE), HAVING
AN ELEVATION OF 268.881m AND VERIFIED
BY STATION 03120110013, HAVING AN
ELEVATION OF 252.807m.

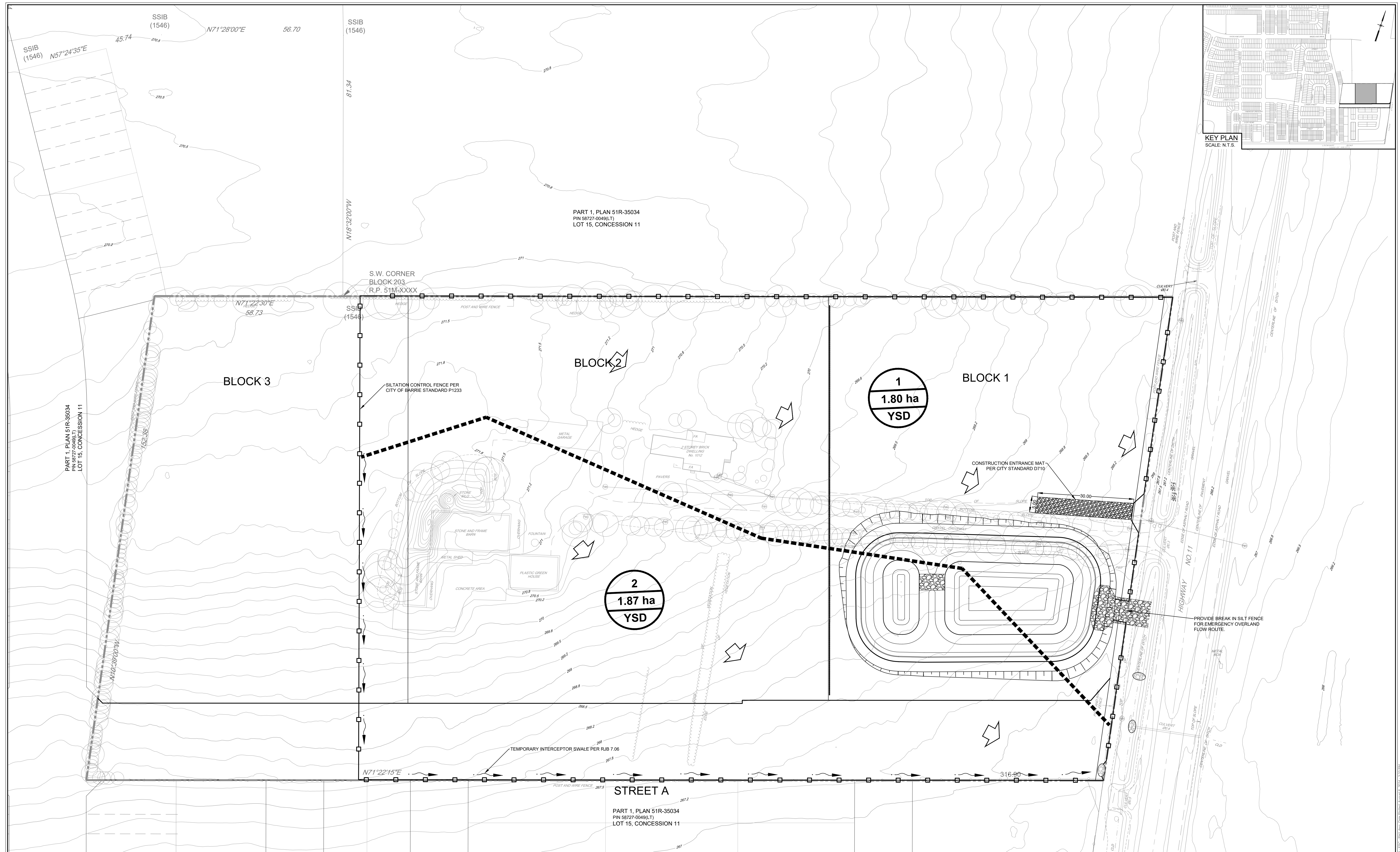


R.J. Burnside & Associates Limited
128 Wellington St. W., Suite 301
Barrie, Ontario, L4N 6J6
telephone 1-800-355-6662
web www.rjburnside.com

Drawing Title
1012 YONGE STREET
INTERIM POND DETAILS

Client
CROWN (BARRIE) DEVELOPMENTS INC.
400 CREDITSTONE ROAD, UNIT 37
CONCORD, ON
L4K 3Z3

Drawn	Checked	Designed	Checked	Date	Drawing No.
M.H.	J.S.	S.F.	J.S.	24/06/11	SWM2
Project No. 300057940	Contract No.	Revision No. 0	CONTRACT NO.		
Scale AS NOTED					



1. This drawing is the exclusive property of R. J. Burnside & Associates Limited. The reproduction of any part without prior written consent of this office is strictly prohibited.
2. The contractor shall verify all dimensions, levels, and datums on site and report any discrepancies or omissions to this office prior to construction.
3. This drawing is to be read and understood in conjunction with all other plans and documents applicable to this project.

[illegible]

Auth.	SITE PLAN
EG	PREPARED BY: SRN ARCHITECTS INC. DATE: 2024-05-22
	TOPOGRAPHIC & LEGAL
	PREPARED BY: GUIDO PAPA SURVEYING TOPO DATE: JANUARY 4, 2019
	BENCHMARK NOTES
	ELEVATIONS SHOWN HEREON ARE GEODETIC AND ARE DERIVED FROM STATION 03120110014 (COSINE), HAVING AN ELEVATION OF 268.681m AND VERIFIED BY STATION 03120110013, HAVING AN ELEVATION OF 252.807m.




[illegible]

--	--

LEGEND:

The legend defines the following symbols:

- AREA ID:** Represented by a circle containing the number 2.
- DRAINAGE AREA:** Represented by a circle containing the text 1.87 ha.
- RECEIVING BODY (YONGE STREET DITCH):** Represented by a circle containing the text YSD.
- CATCHMENT BOUNDARY:** Represented by a thick dashed line.
- SILTATION CONTROL FENCE PER CITY OF BARRIE STANDARD P1233:** Represented by a small square symbol.
- LIMIT OF CONSTRUCTION:** Represented by a thin dashed line.
- EXISTING CONTOUR ELEVATIONS:** Represented by a line with a small circle and the value 200.

	OVERLAND FLOW DIRECTION
	ROCK CHECK DAM
	TEMPORARY INTERCEPTOR SWALE PER RJB 7.06

The image shows the Burnside logo, which consists of a stylized 'B' inside a circle, followed by the word 'BURNSIDE' in a serif font. To the right of the logo, the contact information for R.J. Burnside & Associates Limited is listed: 128 Wellington St. W., Suite 301, Barrie, Ontario, L4N 8J6, telephone 1-800-255-5662, and web www.rjburnside.com.

Drawing Title					ESC1
1012 YONGE STREET					
EROSION AND SEDIMENT CONTROL					
Drawn		Checked		Designed	
S.D.		E.G.		E.G.	
Project No.		Contract No.		Date	
3000657940		CONTRACT NO.		2/4/06/11	
Revision No.		0			
<div style="display: flex; align-items: center;"> <div style="margin-right: 10px;">Scale</div> <div style="flex-grow: 1;"> </div> </div>					

CONSTRUCTION SCHEDULE 2024/2025

TOPSOIL STRIPPING, TEMPORARY SEDIMENT BASIN CONSTRUCTION AND BULK EARTHWORKS - 2024

- CONSTRUCTION ACCESS TO REMAIN FROM EXISTING SUBDIVISION VIA TEMPORARY ACCESS ROAD AND MUD MAT.
- ALL PERIMETER SILT FENCE AS PER DRAWING C901 TO BE INSPECTED AND MAINTAINED.
- TOPSOIL STRIPPING IS ONLY TO OCCUR TO THE TOPSOIL STRIPPING BOUNDARY AS SHOWN ON DRAWING C901.
- TOPSOIL STRIPPING TO BE MINIMIZED TO FACILITATE THE CONSTRUCTION OF SEDIMENT BASIN C ONCE AREA IS CONSTRUCTED AND COMPLETELY FUNCTIONING BULK TOPSOIL STRIPPING CAN COMMENCE.
- TOPSOIL STRIPPING TO BE COMPLETED WITHIN THE DEVELOPMENT AREA.
- TOPSOIL TO BE STOCKPILED AS DIRECTED ON SITE FROM OWNER AND CONSULTANT.
- TOPSOIL PILES TO BE STABILIZED WITH HYDROSEED WITHIN 48 HOURS OF STOCKPILE COMPLETION AND SEDIMENT FENCING IS TO BE INSTALLED AROUND THE PERIMETER OF EACH PILE.
- BULK EARTHWORKS, INCLUDING CUT-TO-FILL OPERATIONS TO BE COMPLETE PER DRAWINGS C901.
- SEDIMENT BASINS ARE TO REMAIN AND BE MAINTAINED UNTIL NO LONGER REQUIRED UNDER FUTURE SERVING AND ROAD WORKS CONTRACT.
- ALL ESC MEASURES TO BE MONITORED TO ENSURE THEY ARE FUNCTIONING PROPERLY.

SEEDING NOTES

- SEED APPLICATION IS TO FOLLOW TOPSOIL STRIPPING IF AREA IS TO BE LEFT FOR 30 DAYS PRIOR TO EARTHWORKS OPERATION.
- SEED TO BE APPLIED AFTER COMPLETION OF BULK EARTHWORKS. ALL SLOPES, EXCAVATIONS AND HIGH EROSION, SEDIMENT MIGRATION AREAS TO BE STABILIZED WITHIN 48 HOURS OF COMPLETION OF WORKS. ADDITIONAL SEEDING TO BE PROVIDED IN AREAS THAT ARE TO BE LEFT DISTURBED FOR GREATER THAN 30 DAYS.
- APPROVED CITY OF BARRIE HYDROSEED MIX
 - HYDROSEED WITH FIBRETAC AT 100 kg/ha
- SEED MIXTURE
 - 48% ANNUAL RYE GRASS
 - 48% FALL RYE
 - 4% RED CLOVER

CONSTRUCTION NOTES

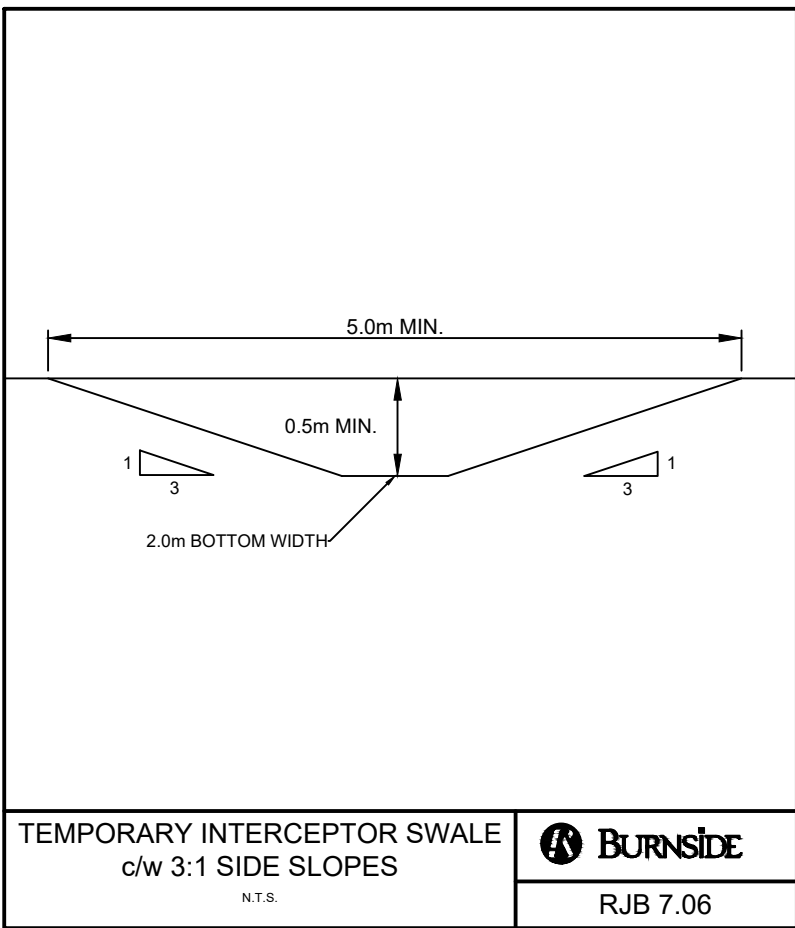
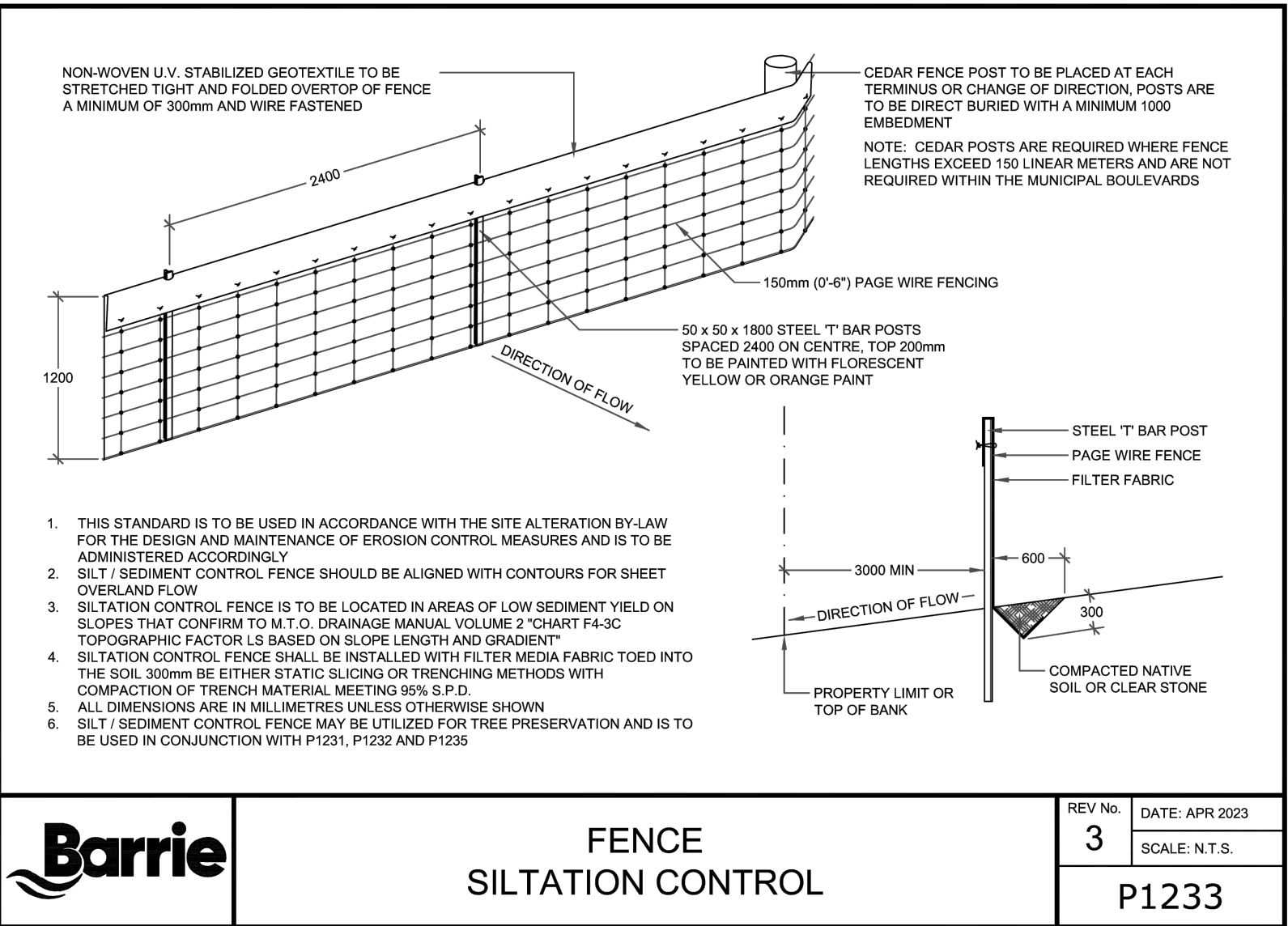
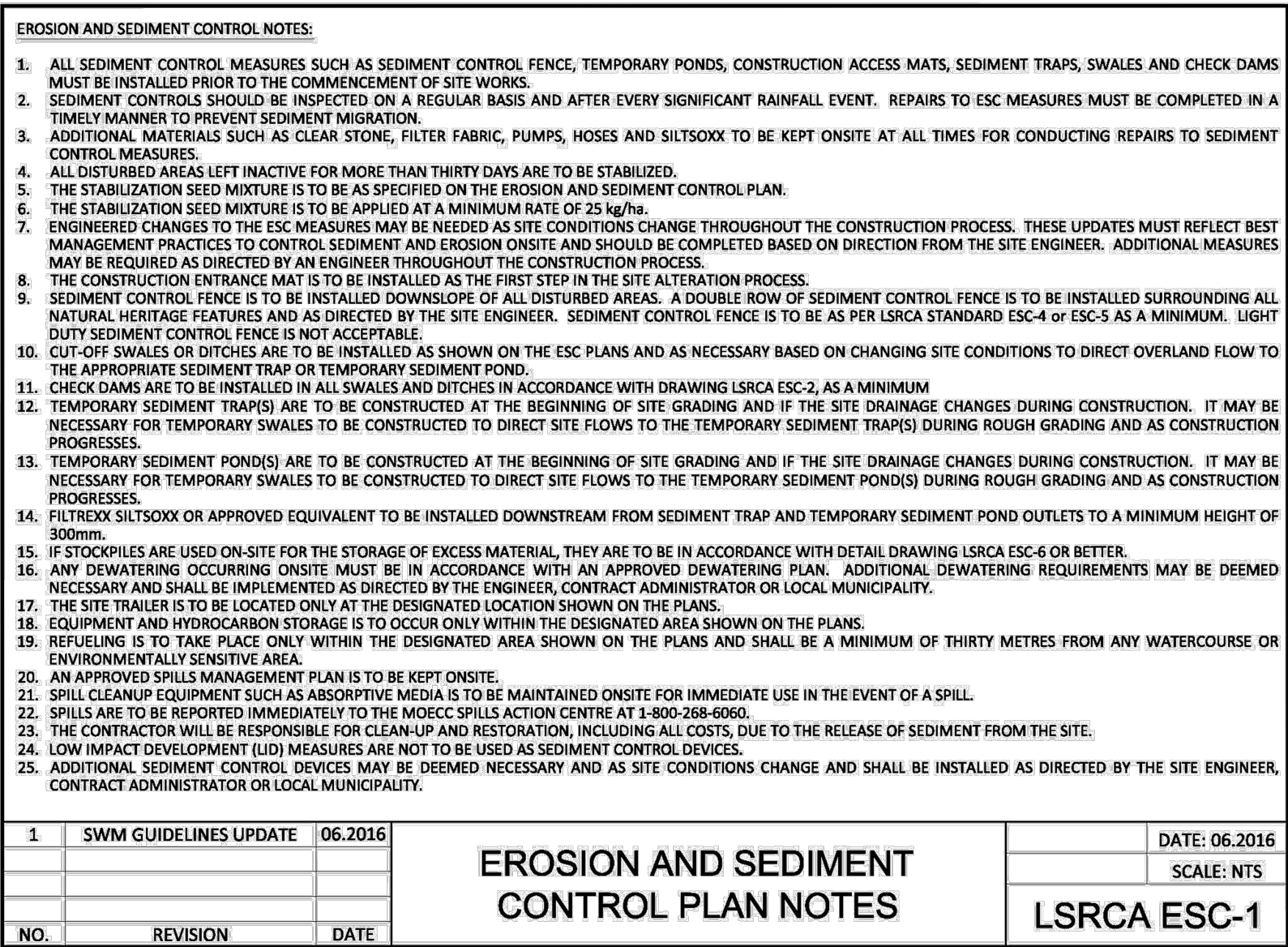
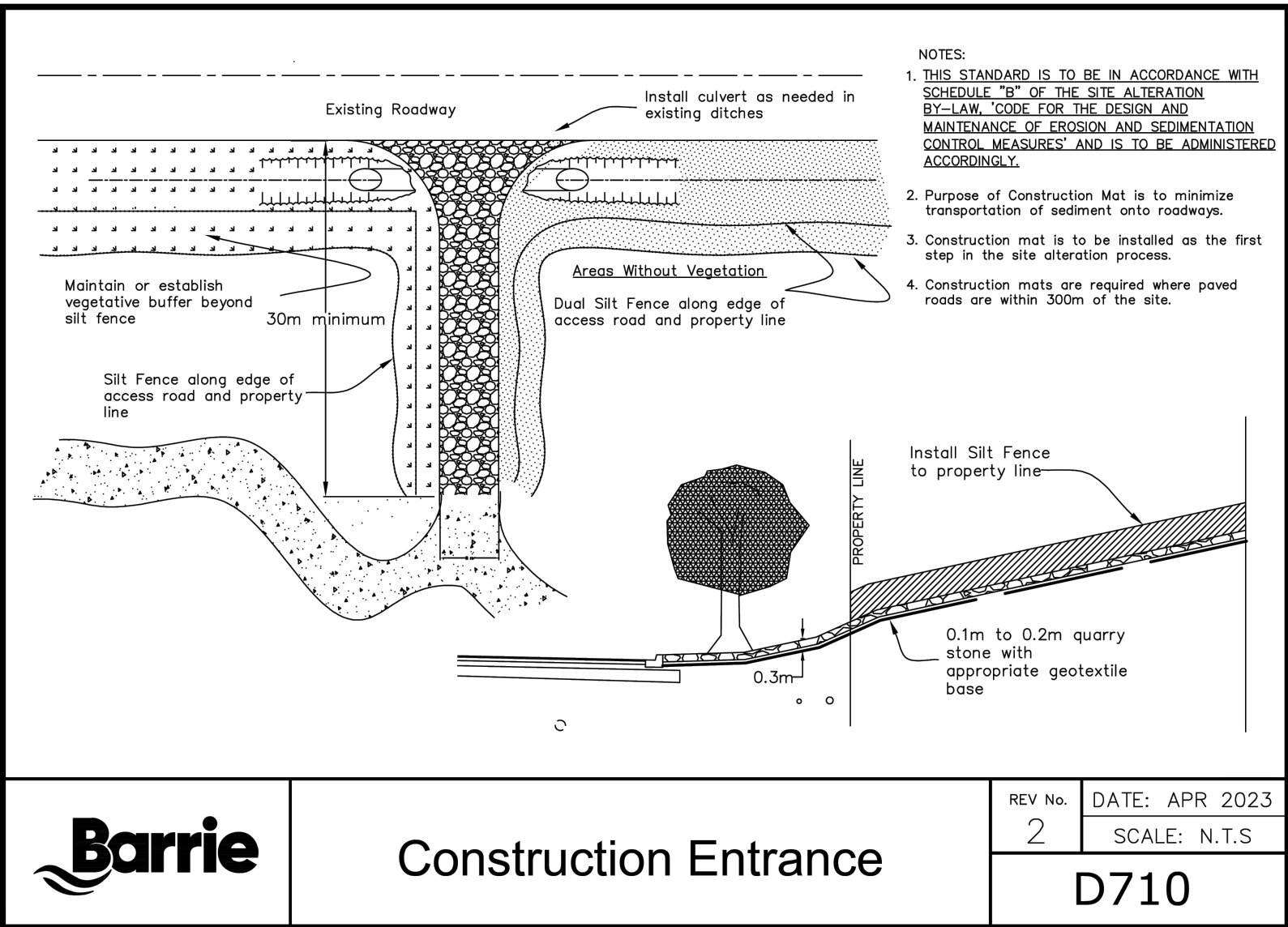
- ALL SEDIMENT AND EROSION CONTROL MEASURES SHALL BE INSTALLED PRIOR TO THE COMMENCEMENT OF CONSTRUCTION AND SHALL REMAIN IN PLACE UNTIL ALL DISTURBED AREAS HAVE BEEN STABILIZED.
- SEDIMENT BASIN OUTLETS TO REMAIN IN PLACE UNTIL ULTIMATE POND OUTLET IS CONSTRUCTED.
- BLADE CUT SWALES ARE TO BE CHECKED REGULARLY FOR EROSION. ADDITIONAL ROCK CHECK DAMS MAY BE REQUIRED AT THE DISCRETION OF THE ENGINEER.
- ALL DISTURBED GROUND LEFT INACTIVE FOR MORE THEN 30 DAYS SHALL BE STABILIZED BY SEEDING, SODDING, MULCHING, OR COVERING OF OTHER EQUIVALENT CONTROL MEASURES.
- THE CONTRACTOR SHALL CONSTRUCT ANY ADDITIONAL SWALES THAT MAY BE NECESSARY TO DIRECT RUNOFF TO EX. OUTLET.
- EROSION CONTROLS TO BE MAINTAINED AS DIRECTED BY THE ENGINEER DURING THE CONSTRUCTION PERIOD.
- ALL EROSION AND SEDIMENT CONTROL MEASURES MUST BE INSPECTED, CLEANED AND MAINTAINED BY THE CONTRACTOR AFTER EACH STORM EVENT. EROSION AND SEDIMENTATION CONTROL DEVICES MUST BE INSPECTED ON A REGULAR BASIS AND AFTER EVERY RAINFALL EVENT. EACH MUST BE MAINTAINED AND REPAIRED IN A TIMELY MANNER TO PREVENT SEDIMENT FROM LEAVING THE SITE.
- ALL CONSTRUCTION VEHICLES THAT ACCESS THE SITE ARE TO USE THE DESIGNED CONSTRUCTION ENTRANCE FROM THE EXISTING DEVELOPMENT TO THE NORTH.
- STOCKPILE LOCATIONS ARE TO BE APPROVED BY THE ENGINEER.
- EROSION AND SEDIMENT CONTROL MEASURES ARE TO BE REMOVED BY THE CONTRACTOR ONCE GROUND COVER IS ESTABLISHED AND LANDSCAPING IS COMPLETE AND IS APPROVED BY THE ENGINEER.
- ALL DISTURBED AREAS THAT HAVE BEEN STRIPPED OF TOPSOIL SHALL BE STABILIZED BY SEEDING, SODDING, MULCHING, OR OTHER ACCEPTABLE CONTROL MEASURES. THE PERIOD OF TIME OF INACTIVITY SHALL NOT EXCEED THIRTY(30) DAYS UNLESS OTHERWISE PERMITTED BY THE DIRECTOR OF ENVIRONMENTAL SERVICES.
- ALL WASTE AND UNUSED CONSTRUCTION MATERIALS (INCLUDING GARBAGE, CLEANING WASTES, WASTEWATER OR ANY HAZARDOUS MATERIALS) SHALL BE PROPERLY DISPOSED OF AND NOT ALLOWED TO BE MIXED WITH SOIL AND CARRIED BY RUNOFF FROM THE SITE INTO A RECEIVING WATERCOURSE OR STORM SEWER SYSTEM.


CONTINGENCY NOTES

- IF UNFORESEEN EVENTS CAUSE THE STRATEGIES SET OUT IN THIS PLAN TO BE INSUFFICIENT OR INAPPROPRIATE TO MEET THE OBJECTIVE, THE CONTRACTOR IS EXPECTED TO RESPOND IN A TIMELY MANNER WITH ALL REASONABLE MEASURES CONSISTENT WITH SAFETY. TO PREVENT, COUNTERACT OR REMEDY DOWNSTREAM SEDIMENTATION AND EROSION.
- IF A SPILL OCCURS IT SHALL BE REPORTED TO THE MINISTRY OF THE ENVIRONMENT, CONSERVATION AND PARKS, AND THE MINISTRY OF NATURAL RESOURCES. THE ON CALL CITY OF BARRIE ENVIRONMENTAL OFFICER SHOULD ALSO BE NOTIFIED VIA PAGER (705-720-5056).
- IF APPROVAL AGENCIES DETERMINE THAT LONG TERM DAMAGE TO THE NATURAL ENVIRONMENT HAS OCCURRED DUE TO FAILURE OF THIS PLAN TO CONTROL SEDIMENTS, A RESTORATION PLAN WILL BE DEVELOPED BY THE CONTRACTOR IN CONSULTATION WITH, AND APPROVAL FROM, THE AGENCIES FOR IMPLEMENTATION BY THE CONTRACTOR.

1. ALL PERMIT HOLDERS SHALL:

- (1.1) NOTIFY THE DIRECTOR OF ENGINEERING WITHIN 48 HOURS PRIOR TO ANY SITE ALTERATION ACTIVITY;
 - (1.2) NOTIFY ALL RESIDENTS, WITHIN A 500 METER RADIUS OF THE SITE, THREE (3) WEEKS BEFORE THE COMMENCEMENT OF SITE ALTERATION;
 - (1.3) NOTIFY THE DIRECTOR OF ENGINEERING OF THE COMPLETION OF ANY EROSION AND SEDIMENT CONTROL MEASURES, WITHIN 48 HRS AFTER INSTALLATION;
 - (1.4) NOTIFY THE DIRECTOR OF ENGINEERING OF THE REMOVAL OF ANY EROSION AND SEDIMENT CONTROL MEASURES, WITHIN A 48 HRS AFTER DECOMMISSIONING;
 - (1.5) OBTAIN PERMISSION IN WRITING FROM THE DIRECTOR OF ENGINEERING PRIOR TO MODIFYING THE SITE ALTERATION PLAN;
 - (1.6) INSTALL ALL EROSION AND SEDIMENT CONTROL MEASURES, AS IDENTIFIED IN THE APPROVED SITE ALTERATION PLAN, PRIOR TO SOIL STRIPPING;
 - (1.7) MAINTAIN ALL ROAD DRAINAGE SYSTEMS, STORMWATER DRAINAGE SYSTEMS, CONTROL MEASURED AND OTHER FACILITIES IDENTIFIED IN THE APPROVED SITE ALTERATION PLAN;
 - (1.8) REPAIR ANY EROSION OR SEDIMENTATION DAMAGE TO ADJOINING SURFACES AND WATERCOURSES RESULTING FROM SITE ALTERATION ACTIVITIES;
 - (1.9) INSPECT THE EROSION AND SEDIMENT CONTROL MEASURES AT LEAST ONCE PER WEEK AND AFTER EACH RAINFALL AND PROVIDE WRITTEN INSPECTION REPORTS TO THE CITY. COMPLETE ANY REPAIRS WITHIN 48 HOURS TO THE SATISFACTION OF THE DIRECTOR OF ENVIRONMENTAL SERVICES;
 - (1.10) ALLOW EMPLOYEES OF THE CITY AND/OR ANY OTHER PERSON(S) WORKING ON BEHALF OF THE CITY, TO ENTER THE SITE FOR THE PURPOSES OF INSPECTING FOR COMPLIANCE WITH THE APPROVED SITE ALTERATION PLAN OR FOR PERFORMING ANY WORK NECESSARY TO BRING THE SITE INTO COMPLIANCE WITH THE APPROVED SITE ALTERATION PLAN;
 - (1.11) MAINTAIN A CURRENT COPY OF THE APPROVED SITE ALTERATION PLAN AND PERMIT ON THE SITE, AS WELL AS, COPIES OF ALL INSPECTION REPORTS, AT ALL TIMES;
 - (1.12) BE RESPONSIBLE FOR THE ACTIVITIES OF AGENTS, SERVANTS, EMPLOYEES, CONTRACTORS AND SUBCONTRACTORS WHO MAY CREATE A SITUATION OF NON-COMPLIANCE OF THE PERMIT;
 - (1.13) CONSTRUCT ADDITIONAL EROSION AND SEDIMENT CONTROL MEASURES, NOT IDENTIFIED IN THE SITE ALTERATION PLAN, AS DEEMED NECESSARY BY THE DIRECTOR OF ENVIRONMENTAL SERVICES TO ENSURE NO EROSION AND SEDIMENT DAMAGE TO THE ADJACENT SITES; AND
 - (1.14) NOT REMOVE TREES OR OTHER VEGETATION DESIGNED AS ENVIRONMENTALLY SIGNIFICANT OR OTHERWISE TO BE PROTECTED UNLESS PERMISSION IS OBTAINED FROM THE CITY.
2. THE CITY MAY:
- (2.1) INSPECT THE SITE PERIODICALLY TO ENSURE COMPLIANCE WITH THE BY-LAW, PARTICULARLY THE SITE ALTERATION PLAN, THAT WAS APPROVED AS PART OF THE PERMIT;
 - (2.2) UPON FAILURE BY PERMIT HOLDER TO COMPLETE ALL OR PART OF THE WORKS IN THE TIME STIPULATED IN THE APPROVED SITE ALTERATION PLAN, DRAW THE APPROPRIATE AMOUNT FROM THE SECURITIES DEPOSITED AND USE FUNDS TO ARRANGE FOR THE COMPLETION OF THE SAID WORKS, OR ANY PART THEREOF;
 - (2.3) UPON FAILURE BY THE PERMIT HOLDER TO INSTALL, REPAIR, MAINTAIN OR DECOMMISSION A SPECIFIC EROSION AND SEDIMENT CONTROL AS REQUESTED BY THE CITY, AND IN THE TIME REQUESTED, AUTHORIZED THE USE OF ALL OR PART OF THE SECURITIES TO PAY FOR THE ASSOCIATED COSTS INCURRED, AT THE DIRECTOR OF ENGINEERING'S DISCRETION AS DEEMED NECESSARY AT ANY TIME, OR
 - (2.4) IN THE CASE OF EMERGENCY REPAIRS OR CLEAN-UP, UNDERTAKE THE NECESSARY WORKS AT THE EXPENSE OF THE PERMIT HOLDER AND REIMBURSE ITSELF OUT OF SECURITIES POSTED BY THE PERMIT HOLDER; AND
 - (2.5) INFORM THE APPLICATION, WHERE NECESSARY, THAT ADDITIONAL INFORMATION IS REQUIRED TO ENSURE THAT EROSION AND SEDIMENT DAMAGE DOES NOT OCCUR TO ADJACENT SITES FROM THE ACTIVITIES ON THE SITE.



<div>1. This drawing is the exclusive property of R. J. Burnside & Associates Limited. The reproduction of any part without prior written consent of this office is strictly prohibited.</div> <div>2. The contractor shall verify all dimensions, levels, and datums on site and report any discrepancies or omissions to this office prior to construction.</div> <div>3. This drawing is to be read and understood in conjunction with all other plans and documents applicable to this project.</div>	<table><tr><th>No.</th><th>Issue / Revision</th><th>Date</th><th>Auth.</th></tr><tr><td>1</td><td>ISSUED FOR CLIENT COORDINATION</td><td>24/08/06</td><td>EG</td></tr><tr><td> </td><td> </td><td> </td><td> </td></tr><tr><td> </td><td> </td><td> </td><td> </td></tr><tr><td> </td><td> </td><td> </td><td> </td></tr><tr><td> </td><td> </td><td> </td><td> </td></tr><tr><td> </td><td> </td><td> </td><td> </td></tr><tr><td> </td><td> </td><td> </td><td> </td></tr></table>	No.	Issue / Revision	Date	Auth.	1	ISSUED FOR CLIENT COORDINATION	24/08/06	EG																									<div><div>SITE PLAN</div><div>PREPARED BY: SRN ARCHITECTS INC. DATE: 2024-05-22</div><div>TOPOGRAPHIC & LEGAL</div><div>PREPARED BY: GUIDO PAPA SURVEYING TOPO DATE: JANUARY 4, 2019</div><div>BENCHMARK NOTES</div><div>ELEVATIONS SHOWN HEREON ARE GEODETIC AND ARE DERIVED FROM STATION 03120110014 (COSINE), HAVING AN ELEVATION OF 268.681m AND VERIFIED BY STATION 03120110013, HAVING AN ELEVATION OF 252.807m.</div></div>	<div>LEGEND:</div>	<div>Client</div> <div>CROWN (BARRIE) DEVELOPMENTS INC. 400 CREDITSTONE ROAD, UNIT 37 CONCORD, ON L4K 3Z3</div>	<div><div> BURNSIDE</div><div>R. J. Burnside & Associates Limited 128 Wellington St. W., Suite 301 Barrie, Ontario, L4N 8J6 telephone 1-800-265-9662 web www.rjburnside.com</div></div>	<div>Drawing Title</div> <div>1012 YONGE STREET</div> <div>EROSION AND SEDIMENT CONTROL NOTES AND DETAILS</div> <table><tr><td>Drawn S.D.</td><td>Checked E.G.</td><td>Designed S.D.</td><td>Checked E.G.</td><td>Date 24/06/11</td><td>Drawing No.</td></tr><tr><td>Project No. 300057940</td><td>Contract No.</td><td>CONTRACT NO.</td><td>Revision No. 0</td><td> </td><td>ESC2</td></tr><tr><td>Scale AS NOTED</td><td colspan="4"> </td><td> </td></tr></table>	Drawn S.D.	Checked E.G.	Designed S.D.	Checked E.G.	Date 24/06/11	Drawing No.	Project No. 300057940	Contract No.	CONTRACT NO.	Revision No. 0		ESC2	Scale AS NOTED					
	No.	Issue / Revision	Date	Auth.																																																				
	1	ISSUED FOR CLIENT COORDINATION	24/08/06	EG																																																				
Drawn S.D.	Checked E.G.	Designed S.D.	Checked E.G.	Date 24/06/11	Drawing No.																																																			
Project No. 300057940	Contract No.	CONTRACT NO.	Revision No. 0		ESC2																																																			
Scale AS NOTED																																																								