

Tree Preservation Plan

MAPLEVIEW DR. AND 20TH SIDEROAD

BARRIE, ONTARIO

Prepared for

DIV Development (Barrie) Limited

130 ADELAIDE STREET WEST, SUITE 2200

TORONTO, ONTARIO M5H 3P5

September 20, 2022

Project No. P2022-635

Prepared by



GeoProcess
RESEARCH ASSOCIATES



Table of Contents

1. Introduction.....	3
1.1. Site Description.....	3
2. Study Methodology	3
3. Inventory Results.....	4
3.1. Community Descriptions.....	5
4. Proposed Development.....	6
5. Discussion	6
5.1. Trees to be Removed.....	6
5.2. Trees to be Retained.....	6
6. Tree Protection Measures.....	7
7. Protected Species.....	8
8. Summary and Recommendations	9

List of Tables

Table 1. Summary of Tree Ownership	4
Table 2. Tree Inventory Results.....	10

List of Maps

Map 1. Key Map	11
Map 2a to 2k. Tree Preservation Plan	11
Map 3. Site Plan	11



1. Introduction



GeoProcess Research Associates Inc. (GeoProcess) was retained by DIV Development (Barrie) Limited to complete a Tree Inventory and Preservation Plan. The “subject property” envelops four (4) parcels of land at the corner of Mapleview Drive and 20th Sideroad in Barrie, Ontario (Map 1). The subject property is the proposed site of a large-scale residential and community development.

An inventory and assessment of existing trees was undertaken in accordance with the proposed development plan. This report was prepared under the following applicable municipal by-laws and guidelines of the City of Barrie, including:

- Tree Protection Manual- City of Barrie (2019)
- City of Barrie Tree Preservation By-law 2005-120
- City of Barrie Public Tree By-law 2009-098

1.1. Site Description

The subject property (~ 80 ha) is on the southern edge of the City of Barrie’s municipal boundary and is approximately 2.5 km south of Lake Simcoe. A Natural Heritage Feature is located centrally within the subject property and is comprised of a woodland and an unevaluated wetland. Another unevaluated wetland occurs in the northern portion of the property and contains a channelized watercourse (Sandy Cove Creek). The watercourse and wetland features are regulated by the Lake Simcoe Region Conservation Authority (LSRCA). Two homesteads previously occurred on the subject property and have been demolished, however, the landscape trees remain.

2. Study Methodology

GeoProcess conducted field studies in April 2022 to identify and assess the existing trees for the subject property including 6 m of adjacent lands. An assessment of individual trees included all trees 10 cm Diameter at Breast Height (DBH) or greater. Trees were described in terms of:

- Species (dominant and secondary)- common and botanical names
- Size (average DBH and/or height)
- Dripline (canopy spread)
- Health (noted disease, hazards or structural issues)
- Condition - condition of trees were assessed as follows:
 - *Trunk integrity (TI)*: conditions on trunk that might affect likelihood of failure based on factors including co-dominant stems, cracks, decay, poor taper, lean, response growth, abnormal or missing/dead bark, etc.
 - *Crown Structure (CS)*: condition on crown structure that might affect likelihood of failure including live crown ratio, presence of defects (including bark, weak attachments, cracks, decay, cavities), crown density.



- *Crown Vigor (CV)*: an assessment of overall tree health classified as weak/under stress (poor), average vigor for its species and site condition with some signs of stress (fair), growing well and appears to be free of significant health stress factors (good).
- Comments - additional relevant detail

Trees were surveyed using a handheld GPS (+/- 3 m error). Species nomenclature and ranking are based on the Ministry of Natural Resources and Forestry Natural Heritage Information Centre species list.

For the purpose of this report, tree ownership is defined as:

- **Private Tree** means trees with stem(s) situated on the Subject property;
- **Neighbouring Tree** means trees with stem (s) situated on adjacent private property; and,
- **Public Tree** means trees with stem(s) situated on land owned by the City of Barrie.
- **Boundary Tree** means trees with stem(s) from the ground level to the first branch straddles a property line of a lot.

3. Inventory Results

Four-hundred and fifty (450) trees were documented in the tree inventory, with DBH ranging from 10 cm to 113 cm. The inventory documented three hedgerows, two rows of street trees, planted fruit trees, and patches of landscape trees throughout the subject property. Tree ownership is summarized in Table 1. Refer to Table 2 for the full tree inventory summary and Map 2a to 2k for the locations of trees documented in the tree inventory.

Table 1. Summary of Tree Ownership

Ownership Category	Number of Trees
Private	375
Public	5
Neighboring	52
Boundary	18
Total	450

3.1. Community Descriptions

Street trees are parallel to Lockhart Rd and 20th Sideroad and dominant species included Silver Maple (*Acer saccharinum*), Red Oak (*Quercus rubra*), Norway Maple (*Acer platanoides*), Sugar Maple (*Acer saccharum*), and the occasional Manitoba Maple (*Acer negundo*). Several suitable bat snag trees were observed adjacent to Lockhart Rd.

Hedgerows on and bordering the subject property were inventoried. Descriptions of the three hedgerows that were inventoried during the assessment are as follows:

- **Hedgerow 1** is located adjacent to Lockhart Rd. and continues north until merges with the Natural Heritage System (NHS). The trees in this feature are dominant in American Basswood (*Tilia americana*), Black Cherry (*Prunus serotina*), Sugar Maple (*Acer saccharum*), and Manitoba Maple (*Acer negundo*) with the occasional American Elm (*Ulmus americana*).
- **Hedgerow 2** is located east, central to the subject property and adjacent to 20th Sideroad. This feature continues west from 20th Sideroad and merges with the NHS. This hedgerow is dominant in Red Oak (*Quercus rubra*), Sugar Maple (*Acer saccharum*), with the occasional White Ash (*Fraxinus americana*).
- **Hedgerow 3** is located northwest of the central woodland, bordering the subject property. This feature occurs in a general north-south direction and connects a portion of the riparian area of the watercourse to the central NHS. This hedgerow is dominant in Sugar Maple (*Acer saccharum*), American Basswood (*Tilia americana*), Ironwood (*Ostrya virginiana*), White Ash (*Fraxinus americana*), and the occasional American Elm (*Ulmus americana*) and Black Cherry (*Prunus serotina*).

Landscape tree groupings were documented in two locations on the subject property where former homesteads were once located. One grouping of landscape trees exists adjacent to Lockhart Rd on the south end of the property, and include dominant tree species of Eastern White Cedar (*Thuja occidentalis*), Red Oak (*Quercus rubra*), and Sugar Maple (*Acer saccharum*). The second grouping occurs on the north end of the subject property adjacent to Mapleview Dr. East and the dominant tree species include Norway Spruce (*Picea abies*), Eastern White Cedar (*Thuja occidentalis*), and the occasional Sugar Maple (*Acer saccharum*).

Fruit trees were planted centrally north within the subject property. These fruit trees spanned south of the watercourse and continue in a south direction until joining the central NHS. The fruit tree species include Apple, Pear, and Plum.

4. Proposed Development

The proposed works include the construction of 146 stacked townhouses, 143 condo townhouses, 113 street townhouses, and 609 single detached homes. A school and adjacent park, two parkettes and three stormwater management facilities are also proposed. A 30 m vegetation protection zone is proposed for the large NHS and the channelized watercourse in the north is to be redesigned.

The proposed redesigned channel will include a naturalized watercourse with a natural meander and riffle/pool design. The associated channel corridor will be divided into two sub-corridors, including the wetland and the associated side slopes. Refer to Map 3 for the proposed site plan.

5. Discussion

The following section provides a discussion and analysis of development related impacts and tree preservation guidelines relative to the proposed development and existing conditions.

5.1. Trees to be Removed

The removal of 275 individual trees is required to accommodate the proposed development and channel reconstruction. The removal of an additional 149 trees is recommended due to overall poor and/or hazardous condition.

Five of the trees proposed for removal are protected by City By-laws. Any requests for removal, cutting, pruning, or relocating of a tree protected by City By-laws must be made in writing to the Director of Roads, Parks and Fleet. Written authorization may require the issuance of a Tree Removal Permit.

Seventy trees proposed for removal require written consent from the adjacent property owner. Of the 70 trees, 19 are consider hazard trees.

5.2. Trees to be Retained

Preservation of 34 individual trees will be possible with the use of the recommended tree protection measures, as shown on Map 2a to 2k. An effort should be made to preserve the healthy trees within the western hedgerow, as they are on the neighbouring property and would be along the rear yards of several of the proposed townhouse lots. Tree protection measures will have to be implemented prior to the proposed grading works to ensure tree resources designated for retention are not impacted by the development. However, it possible that the neighbouring property will be developing the edge in future. In which case there is an understanding that these trees can be removed.

6. Tree Protection Measures

This Tree Preservation Plan was prepared to address tree saving requirements of the City of Barrie Tree By-Law 2014-115 and the Tree Protection Manual version 4, dated Jan. 2019. For construction projects longer than 2 weeks (10 business days), the minimum Tree Protection (TPZ) must be delineated by a preservation fence following the City of Barrie Standard Details BSD-1232 (Figure 1). This may be used in conjunction with siltation control.

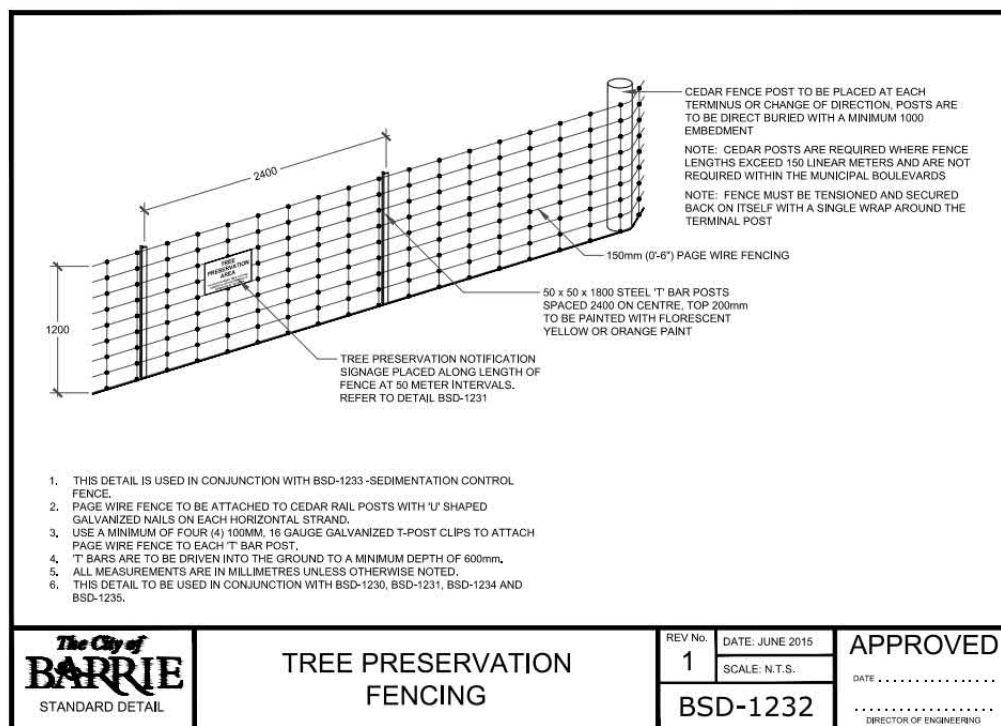


Figure 1. City of Barrie Standard Details BSD-1232

The following is a list of the basic rules of surrounding work near or under a TPZ:

- No excavating or trenching is permitted within the minimum TPZ;
- Directional micro tunnelling and boring is permitted within (under) a TPZ as long as it is at a minimum depth of 1 metre; and,
- When using open face cuts, root pruning must be completed by a qualified arborist or approved tree professional.

A sign that is similar to Figure 2 may be required to be mounted on all sides of a Tree Protection Barrier for trees protected by the Trees on City Streets By-law and the Private Tree By-law. The sign should be a minimum of 40cm x 60cm and made of white gator board or equivalent material.

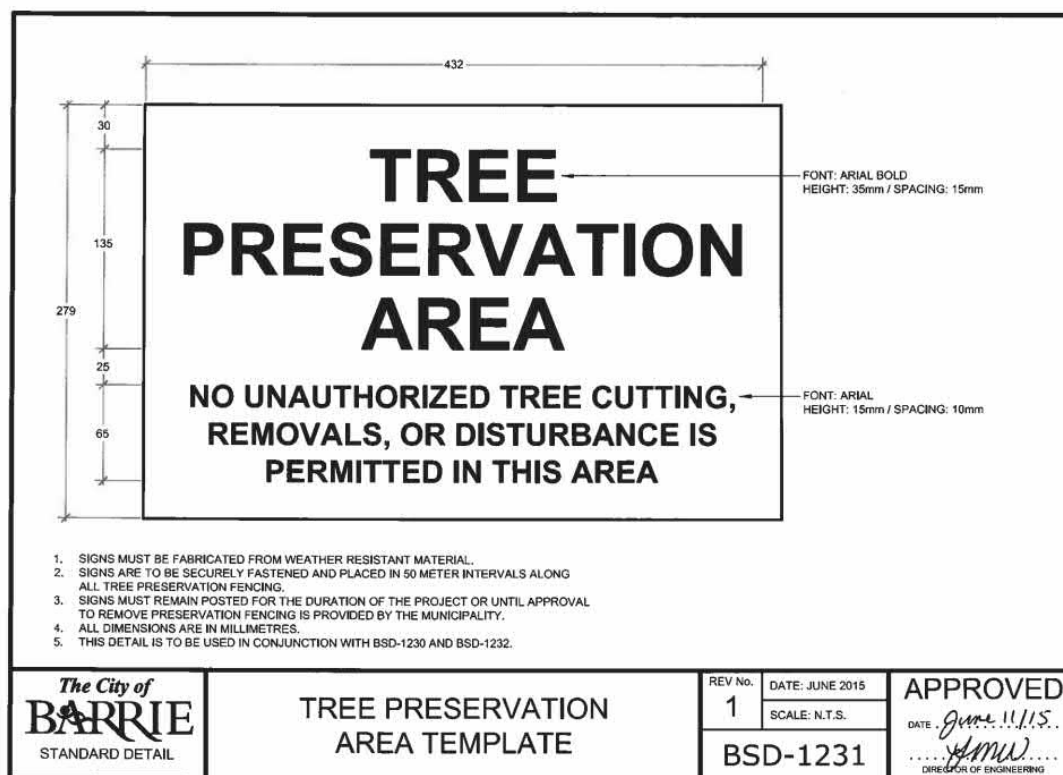


Figure 2. City of Barrie Standard Details BSD-1231

7. Protected Species

The Migratory Birds Convention Act (1994) protects the nests of migratory birds in Canada. Trees to be removed from the site should be removed outside of the migratory bird-nesting window. Following Environment Canada's guidelines, the migratory bird nesting window is from April 1 to August 31. Trees may be removed during this restricted period if the trees are inspected for nests by a qualified avian biologist within 48 hours of removal. It is recommended that tree removals entirely avoid the MBCA nesting timing window.

No protected tree species listed under the Endangered Species Act (2007) were observed on the subject property.

8. Summary and Recommendations

The findings of the study indicate a total of 450 individual trees on and within six metres of the proposed development. The removal of 275 individual trees is required to accommodate the proposed development and channel reconstruction. The removal of an additional 149 trees is recommended due to poor and/or hazardous condition. Preservation of 34 individual trees will be possible with the use of the recommended tree protection measures. The following recommendations are suggested to minimize impacts to trees identified for preservation.

- Tree protection barriers and fencing should be erected at locations as prescribed on Map 2a to 2k. All tree protection measures should follow the guidelines as set out in the tree preservation plan notes and the tree preservation fencing detail.
- Branches and roots that extend beyond prescribed tree protection zones that require pruning must be pruned by a certified arborist or other tree professionals. All pruning of tree roots and branches must be in accordance with Good Arboricultural Standards.
- Site visits, during all phases of construction (pre, during and post) is recommended by either a certified arborist (I.S.A.) or registered professional forester (R.P.F.) to ensure proper utilization of tree protection barriers. Trees should also be inspected for damage incurred during construction to ensure appropriate pruning or other measures are implemented.
- Five of the trees proposed for removal are protected by City By-laws and require written consent and or a permit for removal. The party responsible for injury to the trees shall replace the trees based on the appraisal methods outlined by the City of Barrie.

The information and recommendations noted in this report is based on the information provided at the time the report was prepared. Any updates or changes in design, require the review of the preliminary Tree Preservation Plan in relation to the changes presented. There may be revisions to this report to address site changes as it relates to the trees identified. Any plantings proposed will be provided through the Landscape Plan provided by others (i.e., Landscape Architect) as part of the site plan application.

Regards,

GEOPROCESS RESEARCH ASSOCIATES INC



Meghan Douglas, B.Sc., ERPG
Wildlife Ecologist, ISA Certified Arborist #ON-
2826A

Table 2. Tree Inventory Results

Tree Number	Ownership	Common Name	Scientific Name	DBH (cm)	TI	CS	CV	DL	Action	COMMENTS
1	Private	White Ash	<i>Fraxinus americana</i>	17	G	G	G	2	Remove	
2	Private	Red Oak	<i>Quercus rubra</i>	28.5	G	G	G	3	Remove	LDD cases
3	Private	Red Oak	<i>Quercus rubra</i>	28.5	G	G	G	3	Remove	LDD case
4	Private	Red Oak	<i>Quercus rubra</i>	16.5	G	G	G	2	Remove	LDD
5	Private	Red Oak	<i>Quercus rubra</i>	27	G	G	G	3	Remove	LDD, and grape vine
6	Private	Red Oak	<i>Quercus rubra</i>	14	G	F	F	2	Remove	canopy competition
7	Private	Red Oak	<i>Quercus rubra</i>	13	G	F	G	2	Remove	canopy comp
8	Private	Red Oak	<i>Quercus rubra</i>	12	G	G	G	2	Remove	LDD
9	Private	Red Oak	<i>Quercus rubra</i>	21.5	G	G	G	3	Remove	LDD eggs, canopy comp
10	Private	Red Oak	<i>Quercus rubra</i>	10.5/28.5	G	G	G	3	Remove	
11	Private	Norway Maple	<i>Acer platanoides</i>	20	G	G	G	2	Remove	
12	Private	Norway Maple	<i>Acer platanoides</i>	26.5	G	G	G	3	Remove	
13	Private	Norway Maple	<i>Acer platanoides</i>	46	G	G	G	4	Remove	
14	Private	White Birch	<i>Betula papyrifera</i>	27	G	G	G	3	Remove	LDD egg masses
15	Private	Norway Maple	<i>Acer platanoides</i>	53	G	G	G	6	Remove	cankers
16	Private	Silver Maple	<i>Acer saccharinum</i>	27/25/26	F	F	F	3	Remove	included bark, crack in trunk
17	Private	Norway Maple	<i>Acer platanoides</i>	34.5	G	F	G	4	Remove	cracked lower stem
18	Private	Silver Maple	<i>Acer saccharinum</i>	44.5, 17.5, 36	F	G	G	5	Remove	included bark
19	Private	Silver Maple	<i>Acer saccharinum</i>	37	G	G	G	4	Remove	
20	Private	Silver Maple	<i>Acer saccharinum</i>	51	G	G	G	6	Remove	
21	Private	Silver Maple	<i>Acer saccharinum</i>	52	F	G	G	6	Remove	one weak trunk
22	Private	Silver Maple	<i>Acer saccharinum</i>	45	G	G	G	5	Remove	
23	Private	Silver Maple	<i>Acer saccharinum</i>	7*10-20	F	F	G	4	Remove	trunk competition from multi-stem growth
24	Private	Silver Maple	<i>Acer saccharinum</i>	46	G	G	G	5	Remove	
25	Private	Silver Maple	<i>Acer saccharinum</i>	44	F	F	G	4	Remove	epicormic branching, new trunk growth from main trunk
26	Private	Silver Maple	<i>Acer saccharinum</i>	26	G	G	G	4	Remove	
27	Private	Silver Maple	<i>Acer saccharinum</i>	41.5	F	G	G	4	Remove	trunk crack



Tree Number	Ownership	Common Name	Scientific Name	DBH (cm)	TI	CS	CV	DL	Action	COMMENTS
28	Private	Norway Maple	<i>Acer platanoides</i>	37.5	G	G	G	4	Remove	
29	Private	Norway Maple	<i>Acer platanoides</i>	40.5	G	G	G	4	Remove	
30	Private	Norway Maple	<i>Acer platanoides</i>		F	F	F	5	Remove	flaking bark
31	Private	Silver Maple	<i>Acer saccharinum</i>	32	F	F	G	4	Remove	lower dead branches
32	Private	Norway Maple	<i>Acer platanoides</i>	20.5,15,13.5	G	G	G	3	Remove	
33	Private	Manitoba Maple	<i>Acer negundo</i>	22/19.5	F	G	G	3	Remove	
34	Private	Norway Maple	<i>Acer platanoides</i>	28	G	G	G	3	Remove	
35	Private	Manitoba Maple	<i>Acer negundo</i>	46.5	F	F	F	5	Remove	
36	Private	Norway Maple	<i>Acer platanoides</i>	37	G	G	G	3	Remove	Crimson King"
37	Private	Norway Maple	<i>Acer platanoides</i>	31	G	G	G	2	Remove	LDD eggs
38	Private	Norway Maple	<i>Acer platanoides</i>	13.5-19*4	F	G	G	7	Remove	inclusion bark low to ground,
39	Private	Norway Maple	<i>Acer platanoides</i>	21/19/15	G	G	G	3	Remove	
40	Private	Norway Maple	<i>Acer platanoides</i>	29	P	F	F	3	Remove	rotten trunk
41	Private	Norway Maple	<i>Acer platanoides</i>	31.5	F	G	G	3	Remove	crack in trunk, LDD
42	Private	Norway Maple	<i>Acer platanoides</i>	29.5,22.5	G	G	G	3	Remove	LDD,
43	Private	Norway Maple	<i>Acer platanoides</i>	47	G	G	G	6	Remove	db lower
44	Private	Norway Maple	<i>Acer platanoides</i>	32	P	F	F	6	Remove	rotted trunk
45	Private	Norway Maple	<i>Acer platanoides</i>	19-25	G	G	G	5	Remove	MS,
46	Private	Norway Maple	<i>Acer platanoides</i>	43.5	F	G	G	6	Remove	exposed root trunks
47	Private	Norway Maple	<i>Acer platanoides</i>	50	G	G	G	6	Remove	bleaching
48	Private	Silver Maple	<i>Acer sacharinum</i>	37, 37	F	G	G	6	Remove	pot for split lower base
49	Private	Silver Maple	<i>Acer sacharinum</i>	23, 17	G	G	G	5	Remove	old rotting wood at base
50	Private	Silver Maple	<i>Acer sacharinum</i>	70, 35	G	G	G	6	Remove	cd, db
51	Private	Silver Maple	<i>Acer sacharinum</i>	38, 20	G	G	G	5	Remove	Cd
52	Private	Silver Maple	<i>Acer sacharinum</i>	51	G	G	G	4	Remove	
53	Private	Silver Maple	<i>Acer sacharinum</i>	50	G	G	G	5	Remove	
54	Private	Silver Maple	<i>Acer sacharinum</i>	48	F	G	G	5	Remove	included bark
55	Private	Norway Maple	<i>Acer platanoides</i>	55	G	G	G	4	Remove	
56	Private	Norway Maple	<i>Acer platanoides</i>	47	G	G	G	5	Remove	

Tree Number	Ownership	Common Name	Scientific Name	DBH (cm)	TI	CS	CV	DL	Action	COMMENTS
57	Private	Norway Maple	<i>Acer platanoides</i>	53	G	G	G	5	Remove	exposed roots
58	Private	Norway Maple	<i>Acer platanoides</i>	43	G	G	G	5	Remove	dead lower branches
59	Private	Norway Maple	<i>Acer platanoides</i>	29	G	G	G	2	Remove	'Crimson King"
60	Private	Norway Maple	<i>Acer platanoides</i>	28.5	G	G	G	2	Remove	'Crimson King"
61	Private	Norway Maple	<i>Acer platanoides</i>	31.5	G	G	G	2	Remove	'Crimson King"
62	Private	Norway Maple	<i>Acer platanoides</i>	24	F	G	G	2	Remove	divot in trunk, epicormic branching
63	Private	Sugar Maple	<i>Acer saccharum</i>	40	P	F	F	4	Remove	trunk rot cavity
64	Private	Sugar Maple	<i>Acer saccharum</i>	70	D	D	D	0	Remove	
65	Private	Sugar Maple	<i>Acer saccharum</i>	80	P	P	P	5	Remove	rotten trunk, lightening damage
66	Private	Sugar Maple	<i>Acer saccharum</i>	71	P	P	P	5	Remove	snag habitat, hazard branch, cracks, cavities
67	Private	American Elm	<i>Ulmus americana</i>	19	P	P	P	4	Remove	DSV, dead maple trunk next to trunk
68	Private	Sugar Maple	<i>Acer saccharum</i>	109	F	F	F	6	Remove	snag habitat, db, cavities, crack, exposed roots
69	Private	Sugar Maple	<i>Acer saccharum</i>	57	P	P	P	5	Remove	
70	Private	Sugar Maple	<i>Acer saccharum</i>	50	D	D	D	5	Remove	dead trunk
71	Private	Sugar Maple	<i>Acer saccharum</i>	60	G	F	F	6	Remove	
72	Private	Sugar Maple	<i>Acer saccharum</i>	55	P	F	F	6	Remove	snag, cracks in trunk, cavities
73	Private	Sugar Maple	<i>Acer saccharum</i>	80	F	F	G	7	Remove	cavity, cracks, snag
74	Private	Sugar Maple	<i>Acer saccharum</i>	65	D	D	D	6	Remove	snag
75	Private	Sugar Maple	<i>Acer saccharum</i>	60	F	F	F	5	Remove	cavity,
76	Private	White Ash	<i>Fraxinus americana</i>	16	F	F	F	2	Remove	EAB
77	Private	Northern Catalpa		25	P	P	P	3	Remove	almost dead
78	Private	American Elm	<i>Ulmus americana</i>	60	D	D	D	4	Remove	dead
79	Private	Norway Maple	<i>Acer platanoides</i>	33	G	G	G	5	Remove	man made hole next to trunk
80	Private	Norway Maple	<i>Acer platanoides</i>	12	P	P	P	2	Remove	
81	Private	Norway Maple	<i>Acer platanoides</i>	20	G	G	G	2	Remove	bleaching on trunk
82	Private	Norway Maple	<i>Acer platanoides</i>	22.5	G	G	G	2	Remove	
83	Private	Red Pine	<i>Pinus resinosa</i>	24	G	G	G	3	Remove	
84	Private	Black Locust	<i>Robinia pseudoacacia</i>	40	F	F	F	4	Remove	crack in trunk
85	Private	Black Locust	<i>Robinia pseudoacacia</i>	13	D	D	D	2	Remove	dead

Tree Number	Ownership	Common Name	Scientific Name	DBH (cm)	TI	CS	CV	DL	Action	COMMENTS
86	Private	Red Pine	<i>Pinus resinosa</i>	22	G	G	G	2	Remove	
87	Private	Eastern White Cedar	<i>Thuja occidentalis</i>	15.5	D	D	D	-	Remove	dead
88	Private	Eastern White Cedar	<i>Thuja occidentalis</i>	15	F	F	F	2	Remove	lean, dead stem, cd
89	Private	Black Locust	<i>Robinia pseudoacacia</i>	60	D	D	D	-	Remove	dead
90	Private	Black Locust	<i>Robinia pseudoacacia</i>	35	D	D	D	-	Remove	dead
91	Private	Black Locust	<i>Robinia pseudoacacia</i>	14	F	F	F	2	Remove	nail in trunk
92	Private	Black Locust	<i>Robinia pseudoacacia</i>	12.5	F	F	F	2	Remove	
93	Private	Black Locust	<i>Robinia pseudoacacia</i>	32	F	F	F	3	Remove	
94	Private	Silver Maple	<i>Acer sacharinum</i>	27,40	F	G	G	5	Remove	cd, epicormic branching, lean
95	Private	Eastern White Cedar	<i>Thuja occidentalis</i>	10	G	G	G	2	Remove	
96	Private	Eastern White Cedar	<i>Thuja occidentalis</i>	12	G	G	G	2	Remove	
97	Private	Eastern White Cedar	<i>Thuja occidentalis</i>	16	G	G	G	2	Remove	
98	Private	Eastern White Cedar	<i>Thuja occidentalis</i>	17	G	G	G	2	Remove	
99	Private	Black Locust	<i>Robinia pseudoacacia</i>	28, 24	G	G	G	3	Remove	
100	Private	Black Locust	<i>Robinia pseudoacacia</i>	23.5	F	F	F	2	Remove	
101	Private	Black Locust	<i>Robinia pseudoacacia</i>	11, 14	F	F	F	2	Remove	
102	Private	Sugar Maple	<i>Acer saccharum</i>	22	G	G	G	2	Remove	
103	Private	Black Locust	<i>Robinia pseudoacacia</i>	95	D	D	D	-	Remove	dead, rotten trunk
104	Private	Eastern White Cedar	<i>Thuja occidentalis</i>	10,14,15	G	G	G	2	Remove	ms
105	Private	Nothern Catalpa	<i>Catalpa speciosa</i>	40	F	F	F	4	Remove	broken branch
106	Private	Sugar Maple	<i>Acer saccharum</i>	17.5, 24.5	G	G	G	2	Remove	cd, included bark
107	Private	Sugar Maple	<i>Acer saccharum</i>	22	G	G	G	2	Remove	
108	Private	Sugar Maple	<i>Acer saccharum</i>	16	G	G	G	2	Remove	
109	Private	Eastern White Cedar	<i>Thuja occidentalis</i>	17-May	G	G	G	2	Remove	
110	Private	Sugar Maple	<i>Acer saccharum</i>	50	F	F	G	5	Remove	LDD, flaking bark, cracks, crevices
111	Private	Sugar Maple	<i>Acer saccharum</i>	24.5/22	G	G	G	3	Remove	
112	Private	fruit tree	UNK	26	G	G	G	3	Remove	
113	Private	White Ash	<i>Fraxinus americana</i>	85	G	F	F	7	Remove	
114	Private	Hawthorne sp.	<i>Crataegus sp.</i>	21	G	G	G	2	Remove	

Tree Number	Ownership	Common Name	Scientific Name	DBH (cm)	TI	CS	CV	DL	Action	COMMENTS
115	Private	White Ash	<i>Fraxinus americana</i>	92	F	F	F	6	Remove	
116	Private	White Ash	<i>Fraxinus americana</i>	22, <65	P	P	P	6	Remove	
117	Private	Red Oak	<i>Quercus rubra</i>	16	G	G	G	2	Remove	
118	Private	Red Oak	<i>Quercus rubra</i>	26	G	G	G	3	Remove	LDD
119	Private	Red Oak	<i>Quercus rubra</i>	30.5	G	G	G	3	Remove	
120	Private	Red Oak	<i>Quercus rubra</i>	15.5	F	G	G	2	Remove	trunk from larger tree causing abrasions
121	Private	Red Oak	<i>Quercus rubra</i>	24.5	G	G	G	3	Remove	LDD
122	Private	Red Oak	<i>Quercus rubra</i>	12.5	G	G	G	2	Remove	
123	Private	Red Oak	<i>Quercus rubra</i>	28	G	G	G	3	Remove	LDD
124	Private	Red Oak	<i>Quercus rubra</i>	19.5	G	G	G	2	Remove	LDD
125	Private	Red Oak	<i>Quercus rubra</i>	36	G	G	G	3	Remove	LDD
126	Private	Red Oak	<i>Quercus rubra</i>	34	G	G	G	3	Remove	
127	Private	Red Oak	<i>Quercus rubra</i>	23	G	G	G	2	Remove	LDD
128	Private	Red Oak	<i>Quercus rubra</i>	40.5	G	G	G	3	Remove	LDD
129	Private	Red Oak	<i>Quercus rubra</i>	15	G	G	G	2	Remove	
130	Private	Red Oak	<i>Quercus rubra</i>	23	G	G	G	2	Remove	
131	Private	Red Oak	<i>Quercus rubra</i>	27	G	G	G	3	Remove	canopy comp
145	Private	Scots Pine	<i>Pinus sylvestris</i>	16.5	G	F	F	2	Remove	
146	Private	Eastern White Cedar Hedgerow	<i>Thuja occidentalis</i>	56* 2-18 cm	G	G	G	-	Remove	cluster of cedars
147	Private	Eastern White Cedar	<i>Thuja occidentalis</i>	10	G	G	G	2	Remove	
148	Private	Eastern White Cedar	<i>Thuja occidentalis</i>	17	G	G	G	2	Remove	
149	Private	Crack Willow	<i>Salix fragilis</i>	>100	G	G	G	8	Remove	ms, db, combined dbh greater than 100
150	Private	Fruit Tree	<i>Unknown</i>	12.5	P	P	P	2	Remove	lean, snapped at base
151	Private	Fruit Tree	<i>Unknown</i>	15-20	G	G	G	2	Remove	
152	Private	Fruit Tree	<i>Unknown</i>	15-20	G	G	G	2	Remove	growing in a fence
153	Private	Fruit Tree	<i>Unknown</i>	25-Dec	G	G	G	2	Remove	growing through fence
154	Private	Fruit Tree	<i>Unknown</i>	15-Dec	G	G	G	2	Remove	growing through fence
155	Private	Apple spp.	<i>Malus sp.</i>	20-Oct	G	G	G	2	Remove	fence through trunk
156	Private	Apple spp.	<i>Malus sp.</i>	15-20	G	G	G	2	Remove	

Tree Number	Ownership	Common Name	Scientific Name	DBH (cm)	TI	CS	CV	DL	Action	COMMENTS
157	Private	Apple spp.	<i>Malus sp.</i>	15-28	P	F	F	3	Remove	
158	Private	Apple spp.	<i>Malus sp.</i>	15-20	P	F	F	2	Remove	
159	Private	Sugar Maple		66	G	G	G	6	Remove	DB in canopy
160	Private	Black Cherry	<i>Prunus serotina</i>	26	F	F	F	3	Remove-hazard	vitis riparia, db in canopy, large broken limb and sap
161	Private	Basswood	<i>Tilia americana</i>	13,18,10	G	F	F	2	Retain	comp with ash
162	Private	White Ash	<i>Fraxinus americana</i>	43	F	G	G	4	Remove-hazard	bleaching, eab,
163	Private	American Elm	<i>Ulmus americana</i>	42	G	G	G	4	Remove	,vitis riparia
164	Private	Apple sp.	<i>Malus sp.</i>	14	G	G	G	2	Remove	
165	Private	White Ash	<i>Fraxinus americana</i>	14	F	F	F	2	Remove-hazard	comp with malus, eab
166	Private	Apple sp.	<i>Malus sp.</i>	15-20	P	P	P	2	Remove-hazard	2 dead stems, fence
167	Private	White Ash	<i>Fraxinus americana</i>	30	D	D	D	-	Remove-hazard	dead
168	Private	White Ash	<i>Fraxinus americana</i>	13	D	D	D	-	Remove-hazard	dead
169	Private	Apple sp.	<i>Malus sp.</i>	15	F	F	F	2	Remove-hazard	4 fruit trees in fence
170	Private	White Ash	<i>Fraxinus americana</i>	15, 14	P	P	P	2	Remove-hazard	
171	Private	White Ash	<i>Fraxinus americana</i>	13	P	P	P	2	Remove-hazard	almost dead
172	Private	White Ash	<i>Fraxinus americana</i>	14	P	P	P	2	Remove-hazard	
173	Private	White Ash	<i>Fraxinus americana</i>	15	P	P	P	2	Remove-hazard	
174	Private	White Ash	<i>Fraxinus americana</i>	26	P	P	P	3	Remove-hazard	
175	Private	White Ash	<i>Fraxinus americana</i>	22, 22	P	P	P	2	Remove-hazard	cd



Tree Number	Ownership	Common Name	Scientific Name	DBH (cm)	TI	CS	CV	DL	Action	COMMENTS
176	Private	Apple spp.	<i>malus</i>	17-Oct	F	F	F	2	Remove-hazard	fence
177	Private	White Ash	<i>Fraxinus americana</i>	22	P	P	P	2	Remove-hazard	
178	Private	Sugar Maple	<i>Acer saccharum</i>	22-29	G	G	G	4	Retain	comp with ash, cd
179	Private	White Ash	<i>Fraxinus americana</i>	23x3	P	P	P	2	Remove-hazard	bleaching
180	Private	White Ash	<i>Fraxinus americana</i>	26.5	P	P	F	2	Remove-hazard	bleaching
181	Private	Sweet Cherry	<i>prunus avium</i>	24	F	F	F	2	Remove-hazard	
182	Private	White Ash	<i>Fraxinus americana</i>	50	P	P	P	4	Remove-hazard	almost dead
184	Private	White Ash	<i>Fraxinus americana</i>	15	P	P	P	2	Remove-hazard	vine
185	Private	White Ash	<i>Fraxinus americana</i>	43	P	P	P	3	Remove-hazard	tag 452, adjacent property of fence
186	Private	American Elm	<i>Ulmus americana</i>	18	G	F	F	2	Remove-hazard	canopy comp
187	Boundary	White Ash	<i>Fraxinus americana</i>	15	P	P	P	2	Remove-hazard	
188	Neighbouring	White Ash	<i>Fraxinus americana</i>	48	P	P	P	3	Remove-hazard	
189	Private	Norway Maple	<i>Acer platanoides</i>	14	G	G	G	2	Remove	
190	Private	White Ash	<i>Fraxinus americana</i>	48,60	P	P	P	4	Remove-hazard	cd, dead almost
191	Private	American Elm	<i>Ulmus americana</i>	40	G	G	G	4	Remove	off property
192	Private	Apple spp.	<i>Malus spp.</i>	15-20	G	G	G	2	Remove	off property
193	Private	White Ash	<i>Fraxinus americana</i>	15	F	F	F	2	Remove-hazard	OP
194	Private	White Ash	<i>Fraxinus americana</i>	28, 24	D	D	D	-	Remove-hazard	dead



Tree Number	Ownership	Common Name	Scientific Name	DBH (cm)	TI	CS	CV	DL	Action	COMMENTS
195	Boundary	White Ash	<i>Fraxinus americana</i>	20	P	P	P	2	Remove-hazard	fence
196	Private	White Ash	<i>Fraxinus americana</i>	21.5	P	P	P	2	Remove-hazard	
197	Boundary	White Ash	<i>Fraxinus americana</i>	38	P	P	P	3	Remove-hazard	
198	Boundary	American Elm	<i>Ulmus americana</i>	14	G	F	G	2	Retain	competition
199	Boundary	American Elm	<i>Ulmus americana</i>	14	F	F	F	2	Remove-hazard	competition
200	Boundary	White Ash	<i>Fraxinus americana</i>	30	P	P	P	3	Remove-hazard	
201	Neighbouring	Ironwood	<i>Ostrya virginiana</i>	19.5	G	G	G	2	Retain	
202	Neighbouring	Ironwood	<i>Ostrya virginiana</i>	14	G	F	G	2	Retain	canopy competition
203	Neighbouring	Sugar Maple	<i>Acer Saccharum</i>	30	G	G	G	3	Retain	
204	Neighbouring	American Elm	<i>Ulmus americana</i>	18	G	G	F	2	Retain	vine comp
205	Neighbouring	White Ash	<i>Fraxinus americana</i>	35	P	P	P	3	Remove-hazard	
206	Neighbouring	White Ash	<i>Fraxinus americana</i>	35	P	P	P	3	Remove-hazard	
207	Neighbouring	Ironwood	<i>Ostrya virginiana</i>	20	G	G	G	2	Retain	
208	Neighbouring	Ironwood	<i>Ostrya virginiana</i>	17	G	G	G	2	Retain	
209	Neighbouring	Ironwood	<i>Ostrya virginiana</i>	22	G	G	G	2	Retain	
210	Neighbouring	White Ash	<i>Fraxinus americana</i>	25	P	P	P	2	Remove-hazard	
211	Neighbouring	Ironwood	<i>Ostrya virginiana</i>	13-Dec	G	G	G	2	Retain	vine competition
212	Neighbouring	White Ash	<i>Fraxinus americana</i>	33	P	P	P	3	Remove-hazard	
213	Neighbouring	Ironwood	<i>Ostrya virginiana</i>	10	G	G	G	2	Retain	
214	Neighbouring	White Ash	<i>Fraxinus americana</i>	22	P	P	P	2	Remove-hazard	
215	Neighbouring	Ironwood	<i>Ostrya virginiana</i>	21.5/16	G	G	G	2	Retain	
216	Neighbouring	Ironwood	<i>Ostrya virginiana</i>	15	F	G	G	2	Retain	competition with trunks



Tree Number	Ownership	Common Name	Scientific Name	DBH (cm)	TI	CS	CV	DL	Action	COMMENTS
217	Boundary	Ironwood	<i>Ostrya virginiana</i>	16	G	G	G	2	Retain	
218	Neighbouring	White Ash	<i>Fraxinus americana</i>	2*17	P	P	P	3	Remove-hazard	
219	Private	White Ash	<i>Fraxinus americana</i>	22.5	P	P	P	2	Remove-hazard	
220	Neighbouring	White Ash	<i>Fraxinus americana</i>	20	P	P	P	2	Remove-hazard	
221	Boundary	Ironwood	<i>Ostrya virginiana</i>	18-Oct	G	G	G	2	Retain	
222	Boundary	Fraxinus americana	<i>Fraxinus americana</i>	29,42	P	P	P	4	Remove-hazard	
223	Boundary	Sugar Maple	<i>Acer saccharum</i>	30	G	G	G	4	Retain	
224	Neighbouring	Ironwood	<i>Ostrya virginiana</i>	10	G	G	G	2	Retain	
225	Neighbouring	White Ash	<i>Fraxinus americana</i>	43	P	P	P	4	Remove-hazard	
226	Private	Sugar Maple	<i>Acer saccharum</i>	29	G	G	G	3	Retain	
227	Private	Sugar Maple	<i>Acer saccharum</i>	38.5	G	G	G	4	Remove	
228	Neighbouring	Sugar Maple	<i>Acer saccharum</i>	47	G	G	G	5	Remove	
229	Boundary	Ironwood	<i>Ostrya virginiana</i>	16.5	G	G	G	2	Retain	
230	Boundary	White Ash	<i>Fraxinus americana</i>	16.5	P	P	P	2	Remove-hazard	
231	Private	Hawthorne sp.	<i>Crataegus sp.</i>	15	G	G	G	2	Retain	
232	Boundary	Sugar Maple	<i>Acer saccharum</i>	21	G	G	G	2	Retain	dark bark
233	Neighbouring	American Elm	<i>Ulmus americana</i>	16	F	F	F	2	Remove-hazard	
234	Private	Sugar Maple	<i>Acer saccharum</i>	70	F	G	G	7	Remove-hazard	
235	Private	Sugar Maple	<i>Acer saccharum</i>	17.5	F	F	F	2	Remove-hazard	comp
236	Private	Sugar Maple	<i>Acer saccharum</i>	36	G	F	F	3	Remove	dead main canopy branches
237	Neighbouring	Black Cherry	<i>Prunus serotina</i>	30.5	F	F	F	3	Remove	one trunk dead
238	Private	Sugar Maple	<i>Acer saccharum</i>	75	G	G	G	6	Remove	



Tree Number	Ownership	Common Name	Scientific Name	DBH (cm)	TI	CS	CV	DL	Action	COMMENTS
239	Private	Sugar Maple	<i>Acer saccharum</i>	33	G	G	G	4	Remove	
240	Private	Sugar Maple	<i>Acer saccharum</i>	65	G	G	G	7	Remove	
241	Private	Sugar Maple	<i>Acer saccharum</i>	17	G	P	P	2	Remove	dead canopy
242	Private	Sugar Maple	<i>Acer saccharum</i>	16	P	P	P	2	Remove	
243	Private	American Basswood	<i>Tilia americana</i>	27/49/50	G	G	G	5	Remove	
244	Private	American Basswood	<i>Tilia americana</i>	21	F	P	P	2	Remove	in btw 2 trees
245	Private	Sugar Maple	<i>Acer saccharum</i>	53	G	G	G	6	Remove	
246	Neighbouring	American Basswood	<i>Tilia americana</i>	11.5	G	G	G	2	Retain	
247	Neighbouring	Sugar Maple	<i>Acer saccharum</i>	60	G	G	G	6	Retain	
248	Neighbouring	Sugar Maple	<i>Acer saccharum</i>	45	G	G	G	5	Retain	
249	Private	White Ash	<i>Fraxinus americana</i>	43.5	G	G	G	5	Remove	
250	Neighbouring	Ironwood	<i>Ostrya virginiana</i>	14.5	G	G	G	2	Retain	slight lean
251	Neighbouring	Black Cherry	<i>Prunus serotina</i>	32	G	G	G	3	Retain	
252	Neighbouring	Sugar Maple	<i>Acer saccharum</i>	55	G	G	G	6	Retain	
253	Neighbouring	Ironwood	<i>Ostrya virginiana</i>	14	F	F	F	2	Remove-hazard	comp
254	Neighbouring	Sugar Maple	<i>Acer saccharum</i>	86	F	G	G	8	Retain	some cracks on trunk
255	Neighbouring	White Ash	<i>Fraxinus americana</i>	15.5	G	G	G	2	Retain	
256	Neighbouring	Sugar Maple	<i>Acer saccharum</i>	21	G	G	G	2	Retain	
257	Boundary	Sugar Maple	<i>Acer saccharum</i>	52	P	F	F	6	Remove-hazard	comp
258	Neighbouring	Black Cherry	<i>Prunus serotina</i>	43	G	G	G	5	Retain	tr to north is pr ser
259	Neighbouring	White Ash	<i>Fraxinus americana</i>	15	G	G	G	2	Retain	
260	Neighbouring	Sugar Maple	<i>Acer saccharum</i>	67.5	G	G	G	6	Retain	
261	Boundary	Sugar Maple	<i>Acer saccharum</i>	53	G	G	G	6	Retain	
262	Private	Sugar Maple	<i>Acer saccharum</i>	113	G	G	G	8	Remove	
263	Private	American Beech	<i>Fagus grandifolia</i>	10	G	G	G	2	Retain	
264	Private	Sugar Maple	<i>Acer saccharum</i>	75	F	F	F	6	Retain	DB, crack, cavities
265	Private	Red Oak	<i>Quercus rubra</i>	17.5	G	G	G	2	Remove	

Tree Number	Ownership	Common Name	Scientific Name	DBH (cm)	TI	CS	CV	DL	Action	COMMENTS
266	Private	Sugar Maple	<i>Acer saccharum</i>	79	P	P	F	8	Remove	Snag, crack, cavities, dead branch, Fungus growing on trunk
267	Private	Sugar Maple	<i>Acer saccharum</i>	84	P	F	F	8	Remove	dead branch, split trunk, suitable snag, fungus
268	Private	Sugar Maple	<i>Acer saccharum</i>	78	P	F	F	5	Remove	Gouge in trunk, crack, co-dominant, second trunk dead
269	Private	Norway Maple	<i>Acer plantanoides</i>	31	G	G	G	3	Remove	
270	Private	Red Oak	<i>Quercus rubra</i>	26	G	G	G	2	Remove	
271	Private	Scot's Pine	<i>Pinus sylvestris</i>	17	G	G	G	2	Remove	
272	Private	Red Oak	<i>Quercus rubra</i>	26	G	G	G	3	Remove	LDD
273	Private	Red Oak	<i>Quercus rubra</i>	18	G	G	G	2	Remove	LDD
274	Private	Red Oak	<i>Quercus rubra</i>	13	G	G	G	2	Remove	LDD
275	Private	Sugar Maple	<i>Acer saccharum</i>	81	P	F	F	8	Remove	Trunk split, dead half way up the tree, crack, cavities, suitable snag
276	Private	Red Oak	<i>Quercus rubra</i>	14	G	G	G	2	Remove	LDD
277	Private	Sugar Maple	<i>Acer saccharum</i>	72	P	P	P	7	Remove	EUST nest, snag, 30% alive, dead/rotting trunk
278	Private	Sugar Maple	<i>Acer saccharum</i>	69	P	P	P	7	Remove	Snag, snag fallen on tree, cavities
279	Private	Red Oak	<i>Quercus rubra</i>	21	G	G	G	2	Remove	CDX4
280	Private	Norway Maple	<i>Acer plantanoides</i>	32, 29	G	G	G	3	Remove	
281	Private	Norway Maple	<i>Acer plantanoides</i>	33	G	G	G	3	Remove	LDD
282	Private	Norway Maple	<i>Acer plantanoides</i>	32, 29	G	G	G	3	Remove	
283	Private	Norway Maple	<i>Acer plantanoides</i>	35, 13	G	G	G	3	Remove	LDD, Broken branch, co-dominant
284	Private	Norway maple	<i>Acer plantanoides</i>	13,15,22,11	G	G	G	2	Remove	CD X4
285	Private	Norway Maple	<i>Acer plantanoides</i>	30	G	G	G	3	Remove	
286	Private	Norway Maple	<i>Acer plantanoides</i>	31	G	G	G	3	Remove	LDD
287	Private	Norway Maple	<i>Acer plantanoides</i>	28	G	G	G	4	Remove	Comp with Manitoba Maple
289	Private	White Ash	<i>Fraxinus americana</i>	29	P	P	P	3	Remove	EAB, Epics, almost dead
290	Private	White Ash	<i>Fraxinus americana</i>	14	D	D	D	-	Remove	Dead
291	Private	Norway Maple	<i>Acer plantanoides</i>	10 to 28	G	G	G	4	Remove	MSX7, inclusions at base
292	Private	White Ash	<i>Fraxinus americana</i>	21	P	P	P	3	Remove	EAB, Epics at base
293	Private	Norway Maple	<i>Acer plantanoides</i>	21	G	G	G	2	Remove	Vine competition

Tree Number	Ownership	Common Name	Scientific Name	DBH (cm)	TI	CS	CV	DL	Action	COMMENTS
294	Private	Norway Maple	<i>Acer plantanoides</i>	21	G	G	G	2	Remove	Epics, co-dominant
295	Private	Norway Maple	<i>Acer plantanoides</i>	40, 32	G	G	G	4	Remove	CD
296	Private	Norway Maple	<i>Acer plantanoides</i>	31, 15, 17	G	G	G	3	Remove	CDX3, LDD, DB
297	Private	Norway Maple	<i>Acer plantanoides</i>	21, 13, 38	G	G	G	4	Remove	CDx3, LDD, Inclusion bark
298	Private	Norway Maple	<i>Acer plantanoides</i>	24,32	F	G	G	2	Remove	CD, LDD, Inclusion bark, canker
299	Private	Norway Maple	<i>Acer plantanoides</i>	17.5	G	G	G	2	Remove	LDD
300	Private	Norway Maple	<i>Acer plantanoides</i>	23.5	G	G	G	2	Remove	
301	Private	Norway Maple	<i>Acer plantanoides</i>	24	G	G	G	2	Remove	LDD
302	Private	Norway Maple	<i>Acer plantanoides</i>	26, 16	G	G	G	2	Remove	CD, LDD eggs
303	Private	Manitoba Maple	<i>Acer negundo</i>	14.5	F	F	F	2	Remove	Stunted, epics, lean
304	Private	Norway maple	<i>Acer plantanoides</i>	21	G	G	G	2	Remove	Broken branch, dead branch
305	Private	Manitoba maple	<i>Acer negundo</i>	15	F	F	F	2	Remove	Lean, canker at base
306	Neighbouring	Norway Maple	<i>Acer plantanoides</i>	24, 17	F	G	G	2	Remove	LDD, CD
307	Neighbouring	Basswood	<i>Tilia americana</i>	17,41,35,28	G	G	G	4	Remove	MSX4
308	Neighbouring	Basswood	<i>Tilia americana</i>	48, 32	F	F	F	3	Remove	CD
309	Neighbouring	Basswood	<i>Tilia americana</i>	31.5, 28	G	G	G	3	Remove	CDX2, Comp, LDD, cav, suitable snag
310	Neighbouring	Basswood	<i>Tilia americana</i>	38,27, 15	G	G	G	3	Remove	CDX3, Comp, LDD, cav, suitable snag
311	Neighbouring	Basswood	<i>Tilia americana</i>	41.5, 31,21,13	G	G	G	4	Remove	MSX4, Comp
312	Neighbouring	Hawthorn sp.		24,24	P	P	P	2	Remove	Rotten base
313	Neighbouring	Black Cherry	<i>Prunus nigra</i>	40, 45, 34	P	P	P	4	Remove	MS, one trunk dead
314	Neighbouring	Basswood	<i>Tilia americana</i>	34	G	G	G	3	Remove	Vine comp.
315	Private	Manitoba maple	<i>Acer negundo</i>	25	G	G	G	3	Remove	Lean
316	Private	American Elm	<i>Ulmus americana</i>	20	F	F	F	2	Remove	Vine comp.
317	Private	Black Cherry	<i>Prunus nigra</i>	28- 34	F	F	F	3	Remove	Boundary Tree and off property. Vine, american woodcock nest at basae
318	Private	Manitoba maple	<i>Acer negundo</i>	15	G	G	G	2	Remove	lean
319	Private	Manitoba Maple	<i>Acer negundo</i>	18	G	G	G	2	Remove	Lean, vine
320	Private	Manitoba Maple	<i>Acer negundo</i>	17.5	G	G	G	2	Remove	Lean, comp, off property
321	Private	Manitoba Maple	<i>Acer negundo</i>	19	G	G	G	2	Remove	lean, hawthorn comp

Tree Number	Ownership	Common Name	Scientific Name	DBH (cm)	TI	CS	CV	DL	Action	COMMENTS
322	Boundary	Basswood	<i>Tilia americana</i>	est. 24	G	G	G	2	Remove	Off property, boundary tree
323	Private	Black Cherry	<i>Prunus nigra</i>	30, 35, 40, 42	P	F	F	4	Remove	Off property, MS, competition
324	Private	Sugar Maple	<i>Acer saccharum</i>	16	G	G	G	2	Remove	Off property
325	Neighbouring	Sugar Maple	<i>Acer saccharum</i>	18	G	G	G	4	Remove	Off property
326	Neighbouring	Sugar Maple	<i>Acer saccharum</i>	41	G	G	G	3	Remove	growing through fence, competition
327	Neighbouring	American Elm	<i>Ulmus americana</i>	36	G	G	G	3	Remove	Competition
328	Neighbouring	Basswood	<i>Tilia americana</i>	55,61,63, 45	G	G	G	6	Remove	Off property, MS, competition
329	Neighbouring	Sugar Maple	<i>Acer saccharum</i>	135	P	G	G	7	Remove	Snag, fence through tree, cracks, cavities, rot
330	Neighbouring	Black Cherry	<i>Prunus nigra</i>	21	P	P	F	2	Remove	DB
331	Boundary	Basswood	<i>Tilia americana</i>	30-45	G	G	G	3	Remove	MS X 5
332	Boundary	Basswood	<i>Tilia americana</i>	17,15,13	G	G	G	2	Remove	
333	Private	Basswood	<i>Tilia americana</i>	15-30	G	G	G	3	Remove	MS X8
334	Private	Black Cherry	<i>Prunus nigra</i>	29	F	F	F	3	Remove	
335	Private	Basswood	<i>Tilia americana</i>	33, 29, 18	G	G	G	3	Remove	
336	Private	Sugar Maple	<i>Acer saccharum</i>	16	G	G	G	2	Remove	
337	Private	Basswood	<i>Tilia americana</i>	31	G	G	G	3	Remove	
343	Private	Eastern White Cedar	<i>Thuja occidentalis</i>	20	G	G	G	2	Remove	
344	Private	Eastern White Cedar	<i>Thuja occidentalis</i>	21	G	G	G	2	Remove	
345	Private	Eastern White Cedar	<i>Thuja occidentalis</i>	27	G	G	G	3	Remove	
346	Private	Eastern White Cedar	<i>Thuja occidentalis</i>	19,15	G	G	G	2	Remove	
347	Private	Eastern White Cedar	<i>Thuja occidentalis</i>	31	G	G	G	3	Remove	
348	Private	Eastern White Cedar	<i>Thuja occidentalis</i>	18	G	G	G	2	Remove	
349	Private	Eastern White Cedar	<i>Thuja occidentalis</i>	34	G	G	G	3	Remove	
350	Private	Eastern White Cedar	<i>Thuja occidentalis</i>	22	G	G	G	2	Remove	
351	Private	Eastern White Cedar	<i>Thuja occidentalis</i>	15	G	G	G	2	Remove	
352	Private	Eastern White Cedar	<i>Thuja occidentalis</i>	17	F	F	F	2	Remove	
353	Private	Eastern White Cedar	<i>Thuja occidentalis</i>	14	G	G	G	2	Remove	
354	Private	Eastern White Cedar	<i>Thuja occidentalis</i>	22	G	G	G	2	Remove	
355	Private	Eastern White Cedar	<i>Thuja occidentalis</i>	13	F	F	F	2	Remove	



Tree Number	Ownership	Common Name	Scientific Name	DBH (cm)	TI	CS	CV	DL	Action	COMMENTS
356	Private	Sugar Maple	<i>Acer saccharum</i>	86	P	P	F	6	Remove	Split trunk, broken branches, broken trunk, external damages
357	Private	Sugar Maple	<i>Acer saccharum</i>	68	F	F	F	5	Remove	suitable snag, trunk split, broken branches, cavity, trunk rot, fallen tree on tree.
358	Private	Norway Spruce	<i>Picea abies</i>	45.5	D	D	D	5	Remove	Dead
359	Private	Norway Spruce	<i>Picea abies</i>	68	F	F	F	7	Remove	
360	Public	Norway Spruce	<i>Picea abies</i>	24, 16	P	P	P	2	Remove	CD,
361	Public	Norway Spruce	<i>Picea abies</i>	45, 28	P	P	P	4	Remove	
362	Public	Norway Spruce	<i>Picea abies</i>	65	F	G	G	7	Remove	damage to branches
363	Public	Norway Spruce	<i>Picea abies</i>	53	P	P	P	5	Remove	trunk broken in half, external damages
364	Public	Norway Spruce	<i>Picea abies</i>	57	F	F	F	5	Remove	
365	Private	Norway Spruce	<i>Picea abies</i>	56	F	F	F	5	Remove	branch and trunk damage, broken branches, dead branches
366	Private	Sugar Maple	<i>Acer saccharum</i>	81	P	P	P	7	Remove	almost dead, cracks and broken trunk
367	Private	Sugar Maple	<i>Acer saccharum</i>	61	F	G	G	6	Remove	trunk broken near top
368	Private	Sugar Maple	<i>Acer saccharum</i>	96	P	P	P	8	Remove	snapped trunk, growing through fence, cracks, cavities, suitable snag
369	Private	Trembling Aspen	<i>Populus tremuloides</i>	15	F	G	G	2	Remove	second trunk broken/dead. CD
370	Private	Trembling Aspen	<i>Populus tremuloides</i>	21	G	G	G	2	Remove	
371	Private	White Pine	<i>Pinus strobus</i>	19	G	G	G	2	Remove	
372	Private	Scot's Pine	<i>Pinus sylvestris</i>	23	G	G	G	2	Remove	
373	Private	Scot's Pine	<i>Pinus sylvestris</i>	18	F	G	G	2	Remove	Strong lean
374	Private	Scot's Pine	<i>Pinus sylvestris</i>	19	P	F	F	2	Remove	trunk broken in half
375	Private	Scot's Pine	<i>Pinus sylvestris</i>	20	D	D	D	2	Remove	Dead
376	Private	Scot's Pine	<i>Pinus sylvestris</i>	21	D	D	D	2	Remove	
381	Private	Trembling Aspen	<i>Populus tremuloides</i>	13.5, 16	G	G	G	2	Remove	
382	Private	Balsam Poplar	<i>Populus balsamifera</i>	10	G	G	G	2	Remove	
383	Private	Willow Species	<i>Salix spp.</i>	19.5	G	G	G	2	Remove	
384	Private	Balsam Poplar	<i>Populus balsamifera</i>	10.5	G	G	G	2	Remove	
385	Private	Willow Species	<i>Salix spp.</i>	14, 10	G	G	G	2	Remove	

Tree Number	Ownership	Common Name	Scientific Name	DBH (cm)	TI	CS	CV	DL	Action	COMMENTS
386	Private	Balsam Poplar	<i>Populus balsamifera</i>	10	G	G	G	2	Remove	
387	Private	Balsam Poplar	<i>Populus balsamifera</i>	10	G	G	G	2	Remove	
388	Private	Balsam Poplar	<i>Populus balsamifera</i>	11, 10	G	G	G	2	Remove	
389	Private	Balsam Poplar	<i>Populus balsamifera</i>	11	G	G	G	2	Remove	
390	Private	Balsam Poplar	<i>Populus balsamifera</i>	10	G	G	G	2	Remove	
391	Private	Balsam Poplar	<i>Populus balsamifera</i>	10	G	G	G	2	Remove	
392	Private	Balsam Poplar	<i>Populus balsamifera</i>	10	G	G	G	2	Remove	
393	Private	Balsam Poplar	<i>Populus balsamifera</i>	10	G	G	G	2	Remove	
394	Private	Balsam Poplar	<i>Populus balsamifera</i>	11	G	G	G	2	Remove	
395	Private	Balsam Poplar	<i>Populus balsamifera</i>	12	G	G	G	2	Remove	
396	Private	Balsam Poplar	<i>Populus balsamifera</i>	18	G	G	G	2	Remove	
397	Private	Eastern White Cedar	<i>Thuja occidentalis</i>	19	G	G	G	2	Remove	
398	Private	Willow Species	<i>Salix spp.</i>	18	G	G	G	2	Remove	
402	Private	Green Ash	<i>Fraxinus pennsylvanica</i>	11	G	G	G	2	Remove	
403	Private	Manitoba Maple	<i>Acer negundo</i>	14	G	G	G	2	Remove	
404	Private	Crack Willow	<i>Salix fragilis</i>	62	F	F	F	6	Remove	broken limbs and stem
405	Private	Crack Willow	<i>Salix fragilis</i>	60	F	F	F	6	Remove	broken branches
406	Private	Willow Species	<i>Salix spp.</i>	42	G	F	G	4	Remove	broken limb
407	Private	Willow Species	<i>Salix spp.</i>	40	G	G	G	4	Remove	
408	Private	Willow Species	<i>Salix spp.</i>	30	G	G	G	4	Remove	
409	Private	Willow Species	<i>Salix spp.</i>	21	F	G	G	2	Remove	lean
410	Private	Willow Species	<i>Salix spp.</i>	26	F	G	G	3	Remove	lean
411	Private	Eastern White Cedar	<i>Thuja occidentslis</i>	12	G	G	G	2	Remove	
412	Private	Eastern White Cedar	<i>Thuja occidentslis</i>	11	G	G	G	2	Remove	
413	Private	Trembling Aspen	<i>Populus tremuloides</i>	10	G	G	G	2	Remove	
414	Private	Trembling Aspen	<i>Populus tremuloides</i>	10	G	G	G	2	Remove	



Codes			
DBH	Diameter at Breast Height	(cm)	
TI	Trunk Integrity	(G,F,P)	
CV	Crown Structure	(G,F,P)	
CV	Crown Vigor	(G,F,P)	
DL	Dripline	(m)	
CD	Codominant		
MS	multi-stem		
LDD	European gypsy moth (<i>Lymantria dispar dispar</i>)		
EAB	Emerald Ash Borer (<i>Agrilus planipennis</i>)		



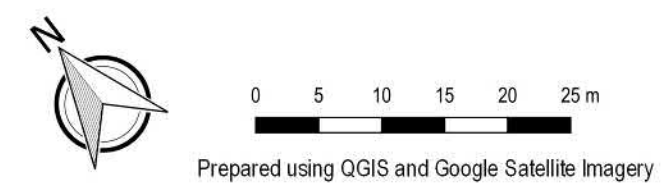


Maps





- Legend**
- Subject Property
 - 30 m Natural Heritage System Buffer
 - Site Plan
 - Tree Protection Fencing
 - Tree to be Removed

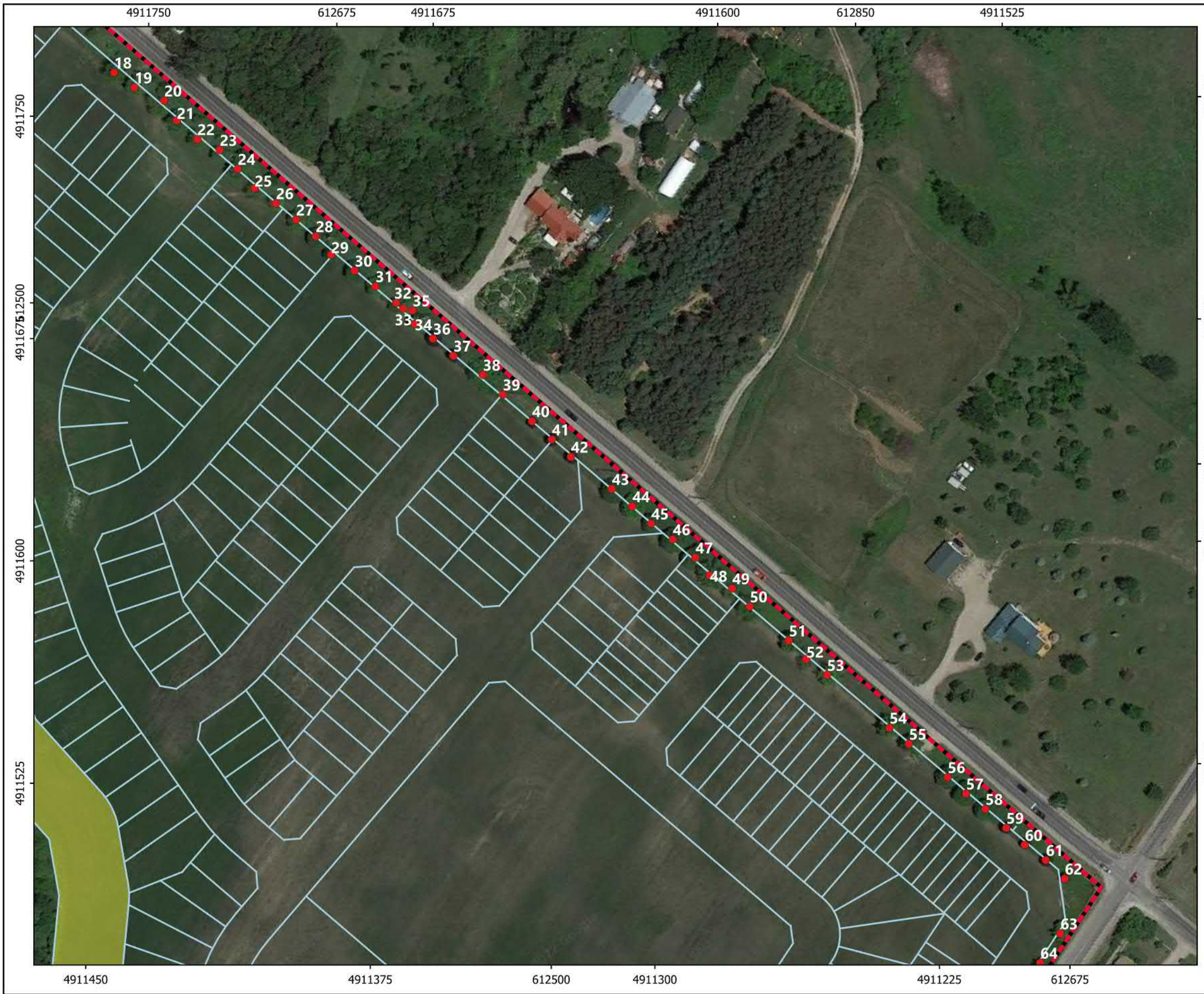


CREATED BY:	MD	PROJECT NO.:	P2022-635
CHECKED BY:	IR	DATE:	Sep 20, 2022

Map 2a.

Trees 1 to 17 and 113 to 130

Tree Preservation Plan
Mapleview Drive and 20th Sideroad
DIV Development (Barrie) Limited




Legend

- Subject Property
- 30 m Natural Heritage System Buffer
- Site Plan
- Tree to be Removed

0 15 30 45 60 75 m

Prepared using QGIS and Google Satellite Imagery



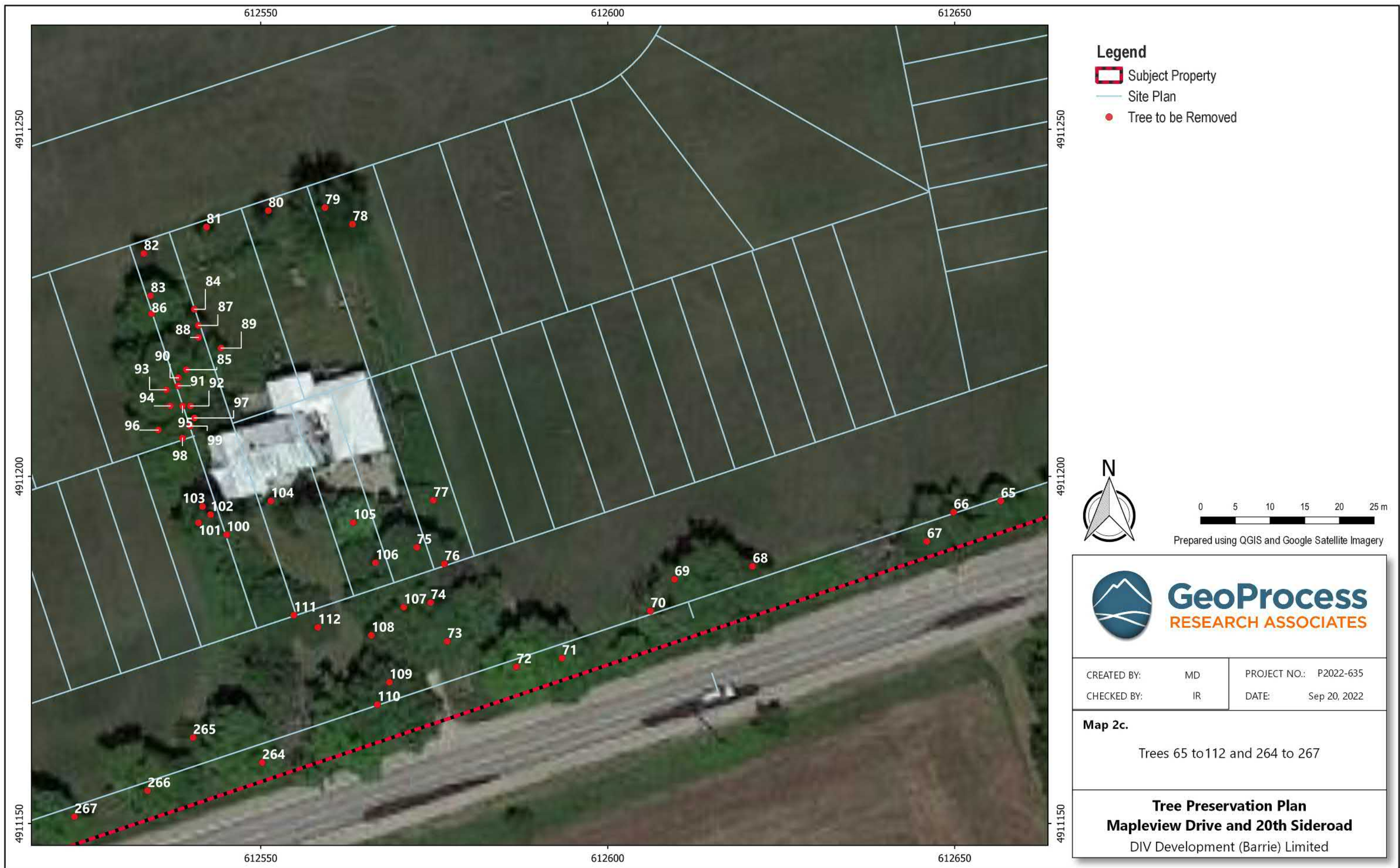
GeoProcess
RESEARCH ASSOCIATES

CREATED BY:	MD	PROJECT NO.:	P2022-635
CHECKED BY:	IR	DATE:	Sep 20, 2022

Map 2b.

Trees 18 to 64

Tree Preservation Plan
Mapleview Drive and 20th Sideroad
DIV Development (Barrie) Limited





- Legend**
- Subject Property
 - Site Plan
 - Tree to be Removed



Prepared using QGIS and Google Satellite Imagery



GeoProcess
RESEARCH ASSOCIATES

CREATED BY: MD
CHECKED BY: IR

PROJECT NO.: P2022-635
DATE: Sep 20, 2022

Map 2d.

Trees 268 to 306

Tree Preservation Plan
Mapleview Drive and 20th Sideroad
DIV Development (Barrie) Limited



Legend

-  Subject Property
-  30 m Buffer
-  Site Plan
-  Tree Protection Fencing
-  Tree to be Removed



0 5 10 15 20 25 m

Prepared using QGIS and Google Satellite Imagery



GeoProcess
RESEARCH ASSOCIATES

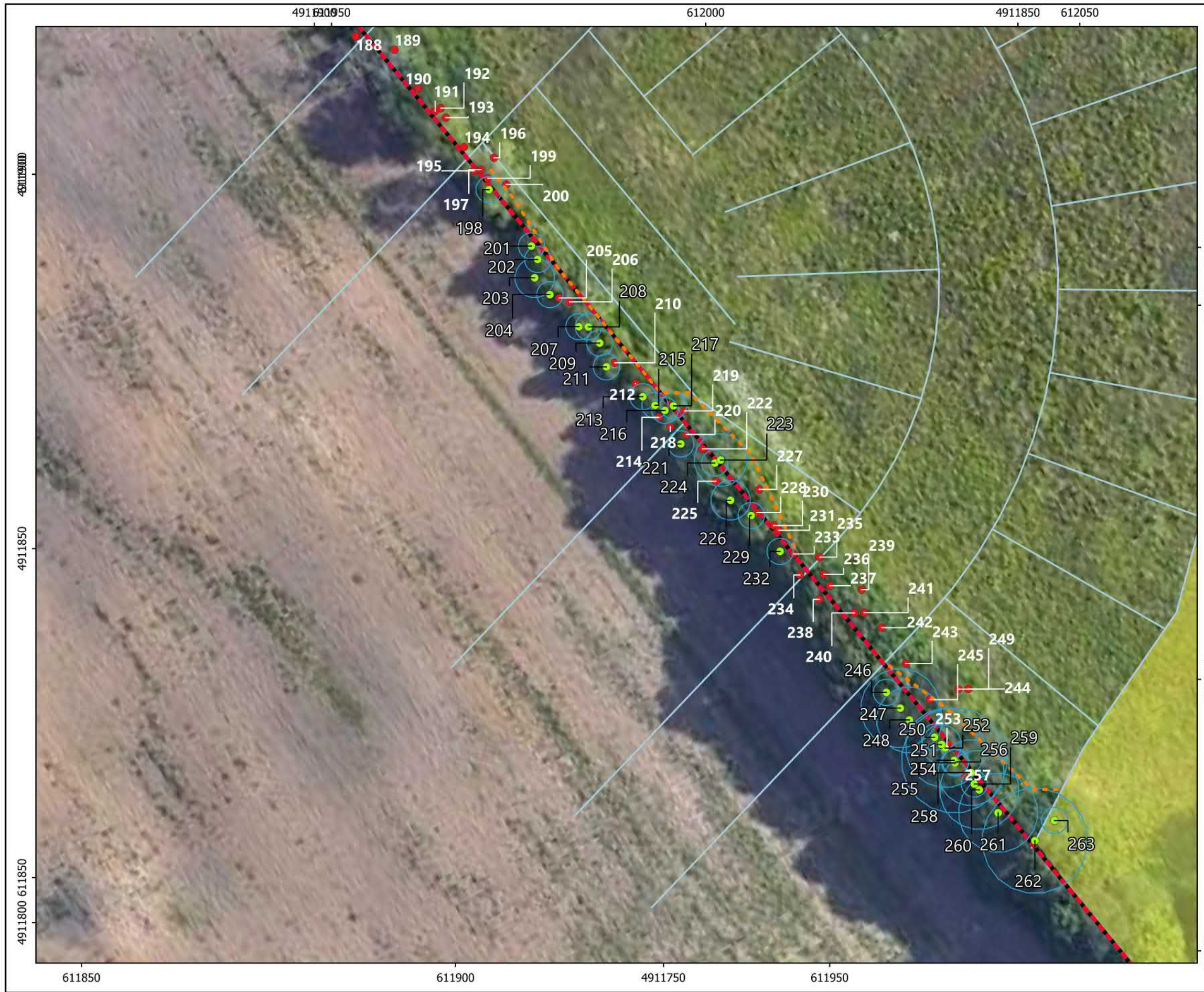
CREATED BY: MD
CHECKED BY: IR

PROJECT NO.: P2022-635
DATE: Sep 20, 2022

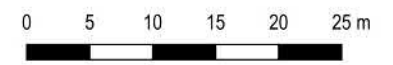
Map 2e.

Trees 307 to 338

Tree Preservation Plan
Mapleview Drive and 20th Sideroad
DIV Development (Barrie) Limited



- Legend**
- Subject Property
 - 30 m Buffer
 - Site Plan
 - Tree to be Removed
 - Trees to be Retained
 - Dripline Measurement (m)
 - Tree Protection Fencing



Prepared using QGIS and Google Satellite Imagery



GeoProcess
RESEARCH ASSOCIATES

CREATED BY: MD
CHECKED BY: IR

PROJECT NO.: P2022-635
DATE: Sep 20, 2022

Map 2f.

Trees 188 to 263

Tree Preservation Plan
Mapview Drive and 20th Sideroad
DIV Development (Barrie) Limited



- Legend**
- Subject Property
 - Site Plan
 - Tree to be Removed



Prepared using QGIS and Google Satellite Imagery



GeoProcess
RESEARCH ASSOCIATES

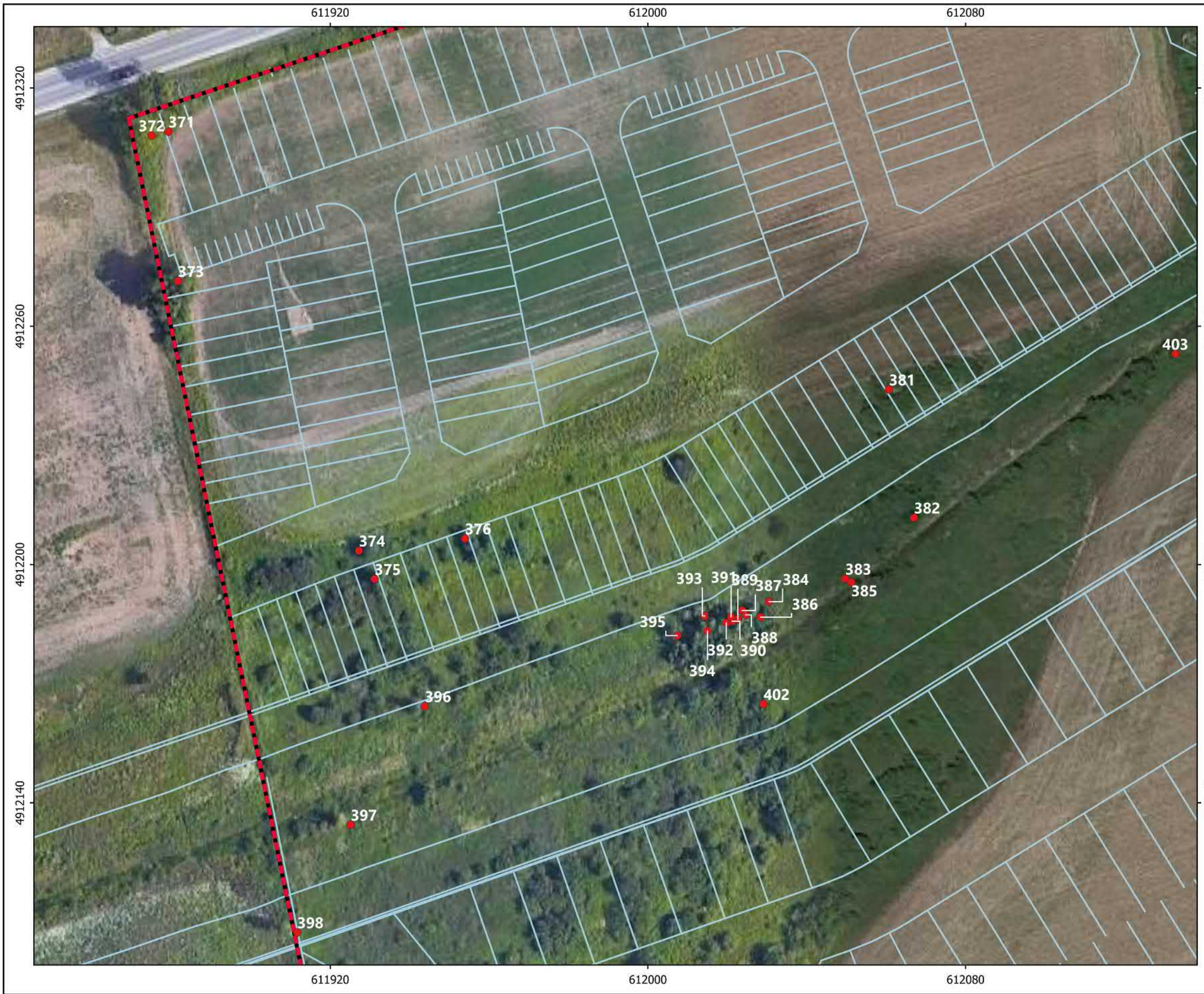
CREATED BY: MD
CHECKED BY: IR

PROJECT NO.: P2022-635
DATE: Sep 20, 2022

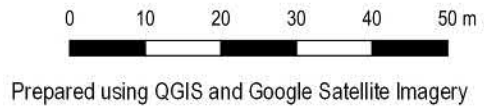
Map 2g.

Trees 161 to 187 and 399 to 401

Tree Preservation Plan
Mapleview Drive and 20th Sideroad
DIV Development (Barrie) Limited



- Legend**
-  Subject Property
 -  Site Plan
 -  Tree to be Removed



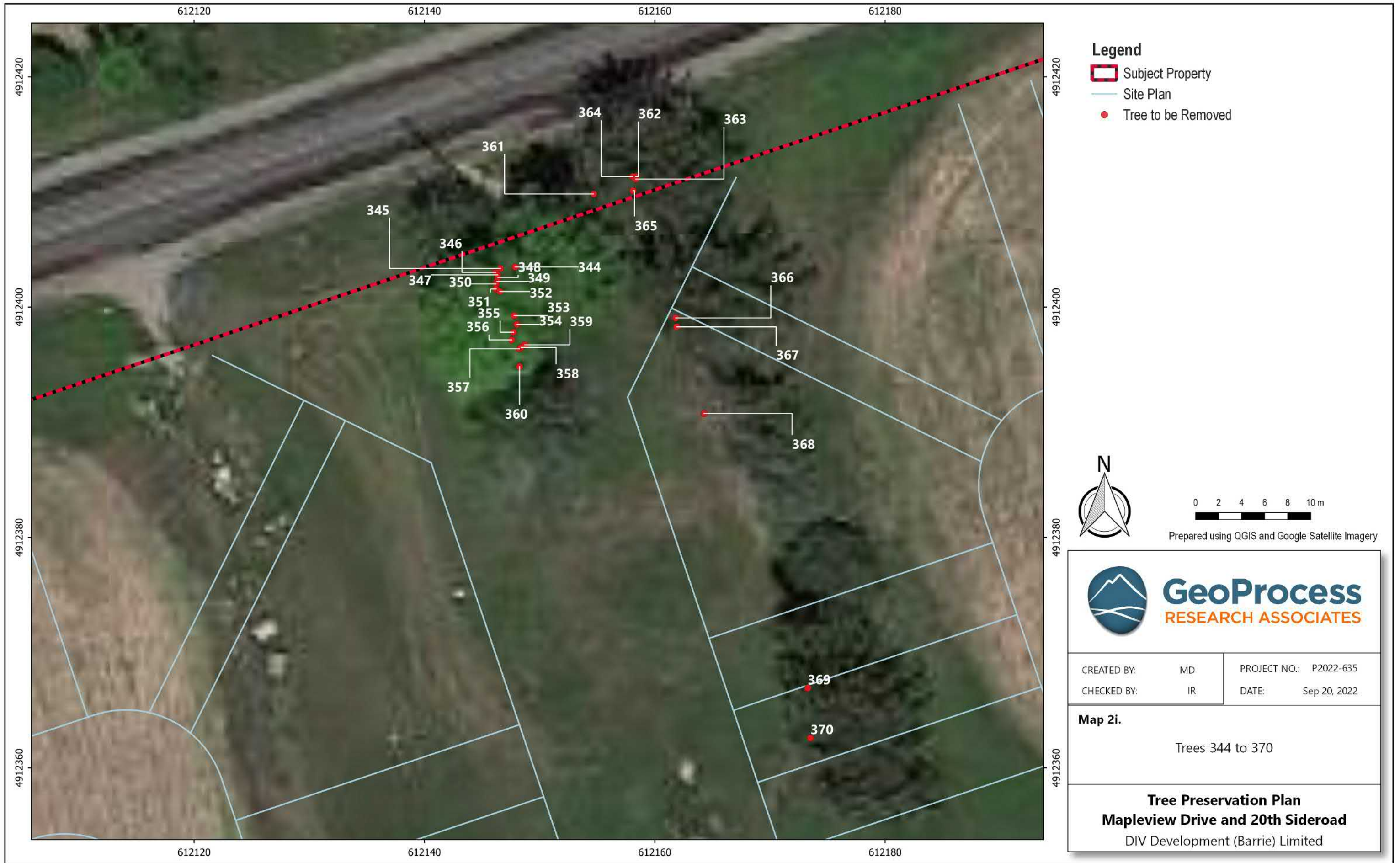
GeoProcess
RESEARCH ASSOCIATES

CREATED BY: MD
CHECKED BY: IR

PROJECT NO.: P2022-635
DATE: Sep 20, 2022

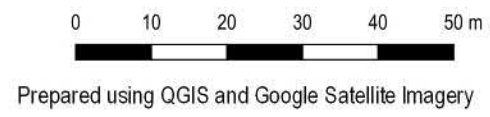
Map 2h.
Trees 371 to 376, 381 to 398 and 402, 403

Tree Preservation Plan
Mapleview Drive and 20th Sideroad
DIV Development (Barrie) Limited





- Legend**
- Subject Property
 - 30 m Buffer
 - Site Plan
 - Tree to be Removed



GeoProcess
RESEARCH ASSOCIATES

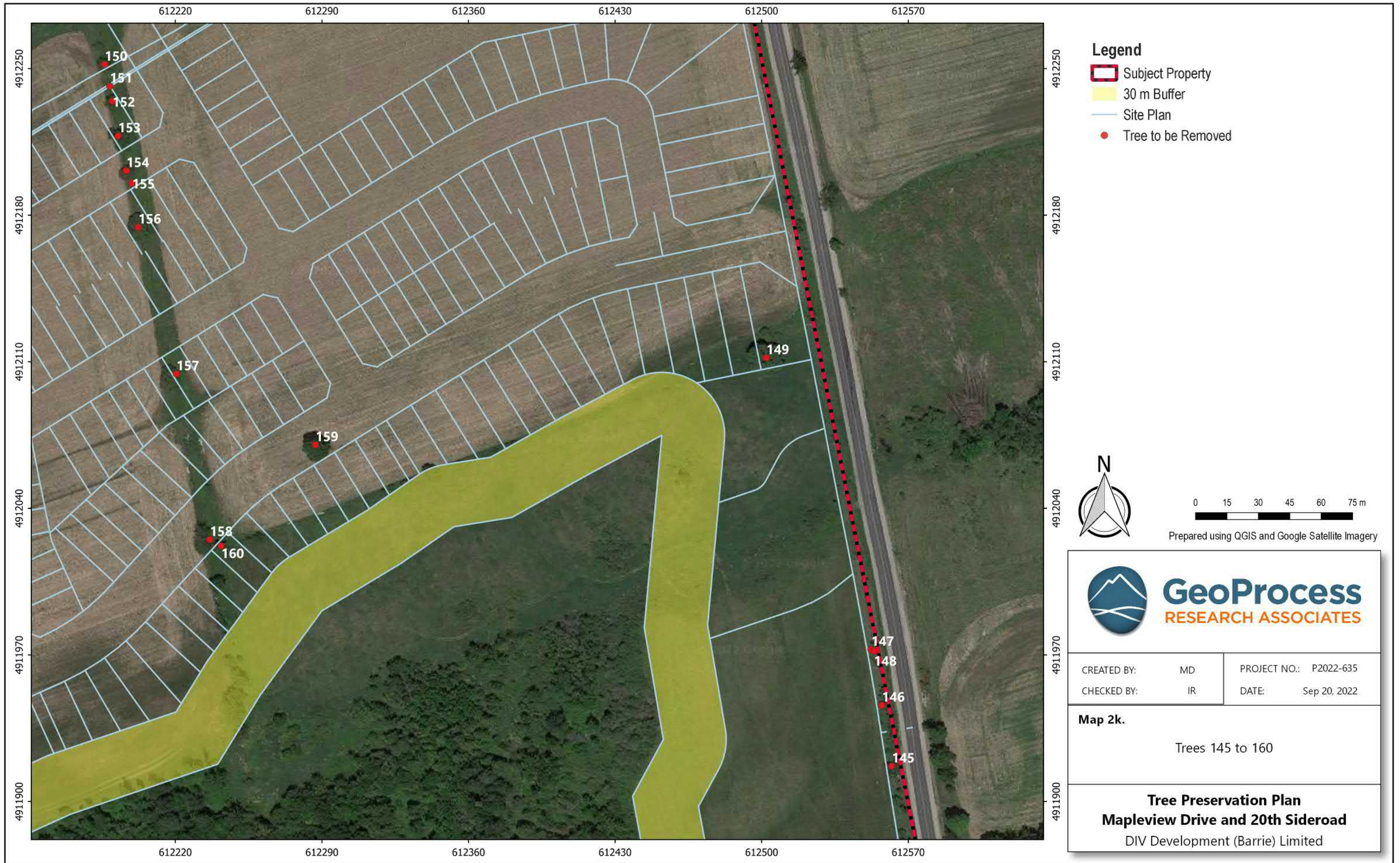
CREATED BY: MD
CHECKED BY: IR

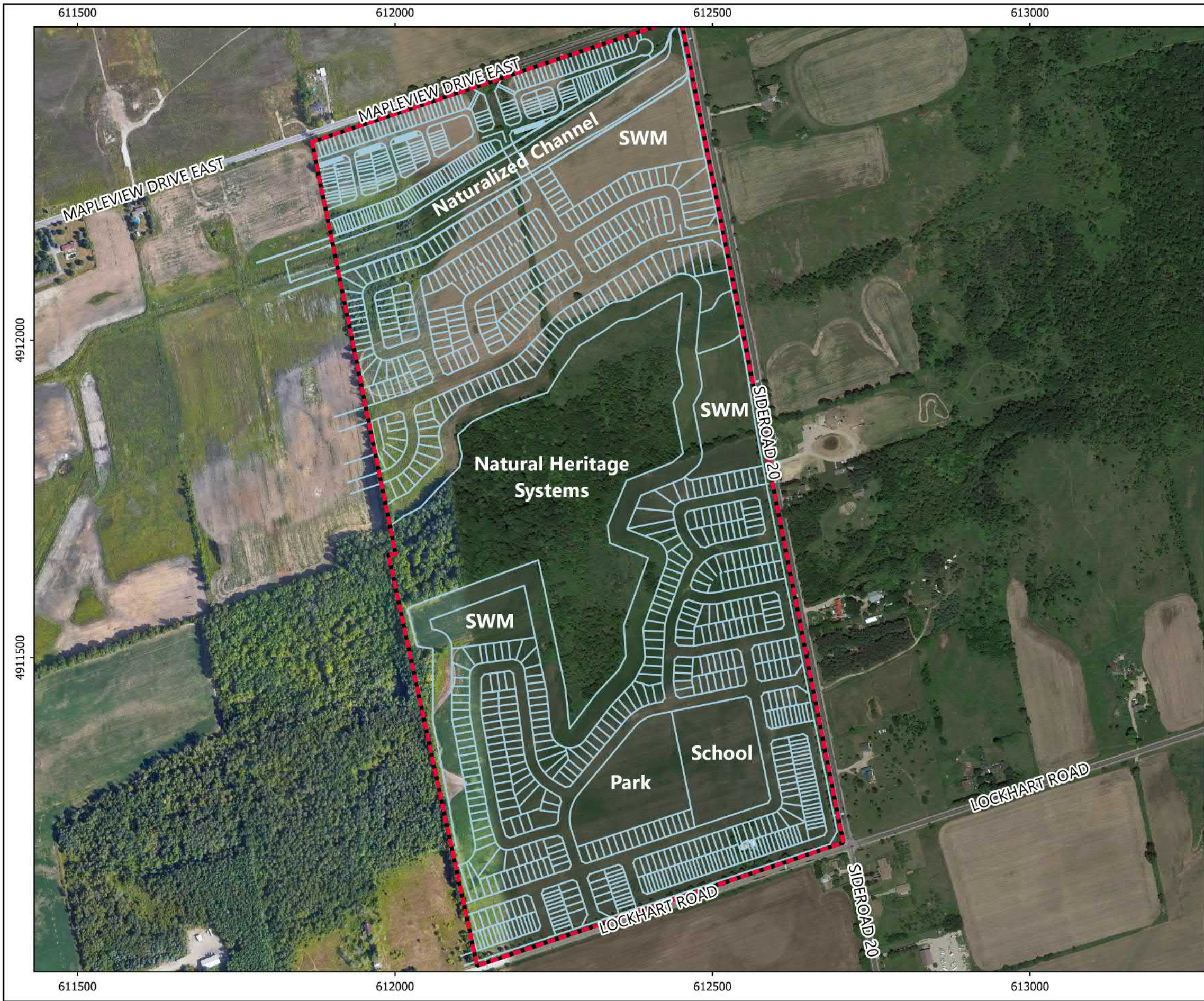
PROJECT NO.: P2022-635
DATE: Sep 20, 2022

Map 2j.

Trees 404 to 414

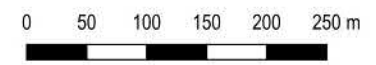
Tree Preservation Plan
Mapleview Drive and 20th Sideroad
DIV Development (Barrie) Limited





Legend

-  Subject Property
-  Site Plan



Prepared using QGIS and Google Satellite Imagery



GeoProcess
RESEARCH ASSOCIATES

CREATED BY: MD
CHECKED BY: IR

PROJECT NO.: P2022-635
DATE: Sep 20, 2022

Map 3.

Site Plan

Tree Preservation Plan
Mapleview Drive and 20th Sideroad
DIV Development (Barrie) Limited