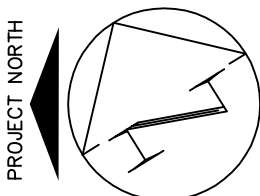
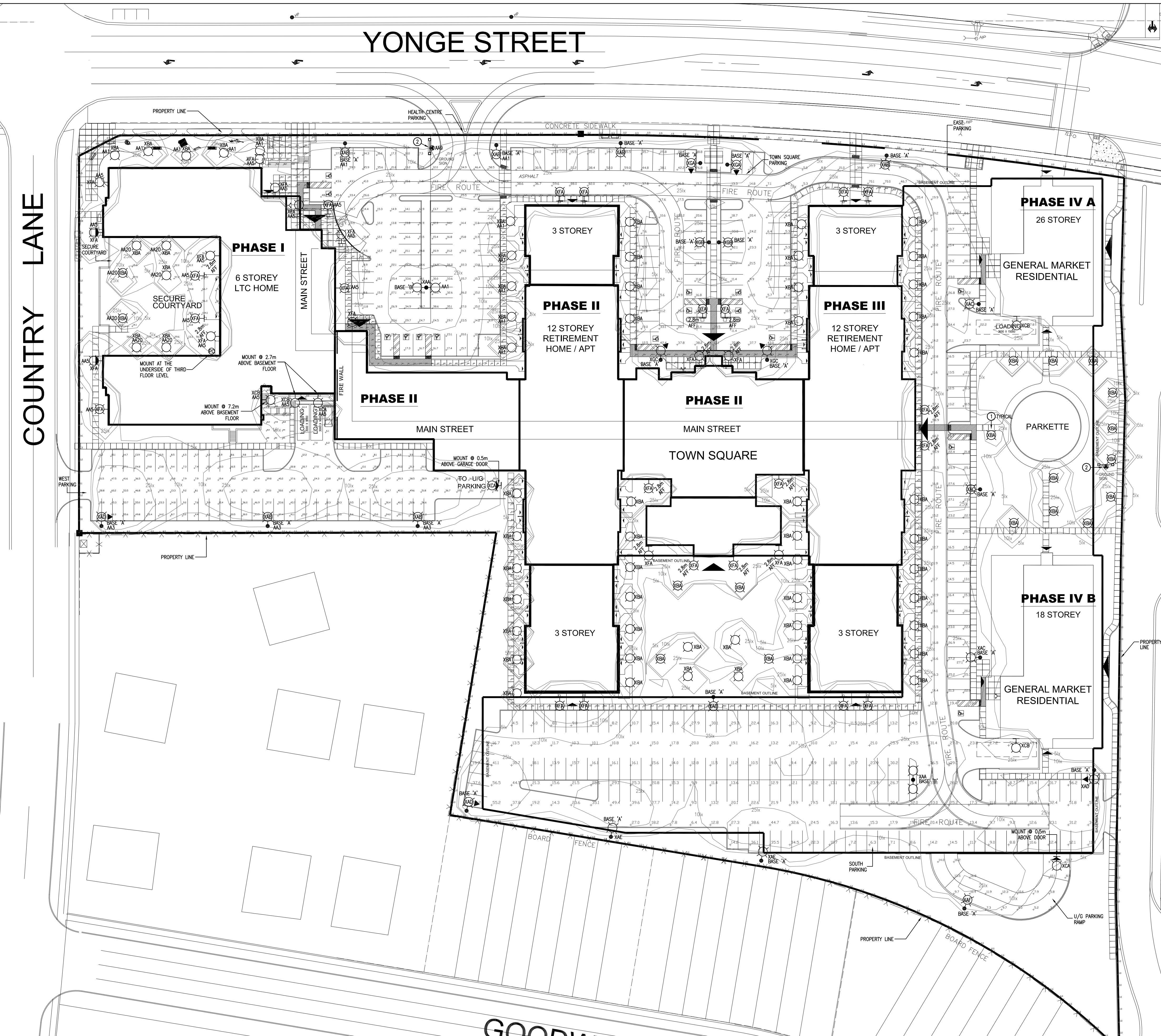


COUNTRY LANE



SITE LIGHTING PLAN
SCALE 1:500

YONGE STREET



ELECTRICAL LEGEND

USE	SYMBOL	DESCRIPTION	USE	SYMBOL	DESCRIPTION
LIGHTING			RECEPTACLES		
✓		LINEAR LIGHT FIXTURE 'x'	✓		DUPLEX RECEPTACLE
✓		BOLLARD LIGHT FIXTURE 'x'	✓		RECEPTACLE ABOVE MILLWORK
✓		WALL MOUNTED LIGHT FIXTURE 'x'	✓		RECEPTACLE IN KICK SPACE
✓		POLE MOUNTED LIGHT FIXTURE 'x'	✓		SPLIT RECEPTACLE
✓		SPOT OR FLOOD LIGHT FIXTURE 'x'	✓		GFCI RECEPTACLE
✓		WALL SCONCE LIGHT FIXTURE 'x'	✓		UPS-BACKED RECEPTACLE
✓		NIGHT LIGHT FIXTURE	✓		RECEPTACLE, 20A, T-SLOT
✓		EMERGENCY LIGHT FIXTURE - WALL	✓		DUPLEX RECEPTACLE WITH USB CHARGER
✓		EMERGENCY LIGHT FIXTURE - CEILING	✓		2-POLE OR 3-POLE RECEPTACLE
✓		EMERGENCY BATTERY PACK 'x'	✓		FLOOR/TABLE MOUNTED OUTLET
✓		EXIT FIXTURE 'x'	✓		CEILING/DECK MOUNTED OUTLET
SWITCHING & CONTROLS			EQUIPMENT & DISTRIBUTION		
✓		SWITCH	✓		MOTOR
✓		MULTIPLE GANG SWITCHES	✓		NON-FUSED DISCONNECT SWITCH
✓		3-WAY SWITCH	✓		FUSED DISCONNECT SWITCH
✓		4-WAY SWITCH	✓		MANUAL STARTER
✓		SWITCH 'x'	✓		COMBINATION STARTER
✓		OCCUPANCY/VACANCY SENSOR 'x'	✓		MAGNETIC STARTER
✓		OCCUPANCY/VACANCY SENSOR 'x' EMERGENCY	✓		RELAY/CONTACTOR
✓		DAYLIGHT SENSOR	✓		EQUIPMENT IDENTIFIER
✓		EMERGENCY RELAY PACK	✓		DISTRIBUTION PANEL
✓		PHOTO CELL	✓		ELECTRIC BASEBOARD HEATER
✓		DIMMER SWITCH (LIGHT)	✓		ELECTRIC FAN FORCED HEATER
✓		DIMMER SWITCH (LINE VOLTAGE)	✓		ELECTRIC HEATER IDENTIFIER
✓		DIMMER SWITCH 'x'	✓		CONDUIT ABOVE GRADE
✓		VARIABLE SPEED CONTROLLER	✓		CONDUIT BELOW GRADE
✓		TIME SWITCH	✓		PROTECTIVE GUARD
✓		TIME CLOCK	✓		JUNCTION BOX
✓		PUSH BUTTON SWITCH	✓		MOTORIZED DAMPER
✓		THERMOSTAT (RA-REVERSE ACTING)	✓		CLOCK
✓		FIRESTAT	✓		DIRECT CONNECTION
✓		POWER DOOR PUSH BUTTON	✓		BAS RELAY
✓		POWER DOOR LOCKING DEVICE	✓		ADJUSTABLE FREQUENCY DRIVE
✓		CALL STATION	FIRE ALARM		
✓		EMERGENCY PUSH BUTTON	✓		ADDRESSABLE SMOKE DETECTOR
COMMUNICATIONS & IT			✓		ADDRESSABLE FIXED HEAT DETECTOR
✓		VOICE OUTLET	✓		ADDRESSABLE R.O.R. HEAT DETECTOR
✓		DATA OUTLET	✓		CONVENTIONAL SMOKE DETECTOR (MODEL SUITE)
✓		DATA & VOICE OUTLET	✓		CONVENTIONAL FIXED HEAT DETECTOR (H-HIGH TEMP)
✓		AUDIO/VIDEO INLET/OUTLET	✓		CONVENTIONAL R.O.R. HEAT DETECTOR (H-HIGH TEMP)
✓		OUTLET ABOVE MILLWORK	✓		DETECTOR WITH RELAY BASE
✓		FLOOR/TABLE MOUNTED OUTLET	✓		DETECTOR WITH DUCT HOUSING
✓		CEILING/DECK MOUNTED OUTLET	✓		ADDRESSABLE PULL STATION
✓		RACKWAY COMMUNICATIONS OUTLET	✓		CONVENTIONAL PULL STATION
✓		MICROPHONE OUTLET	✓		INPUT MODULE
✓		PUBLIC ADDRESS CEILING SPEAKER	✓		RELAY MODULE
✓		SOUND SYSTEM - CEILING SPEAKER	✓		ADDRESSABLE ZONE ISOLATOR
✓		SOUND SYSTEM - WALL SPEAKER	✓		ELECTRONICALLY SUPERVISED VALVE
✓		ASSISTIVE LISTENING RECEIVER/AMPLIFIER	✓		LOW PRESSURE SWITCH
✓		ASSISTIVE LISTENING DOME SENSOR	✓		FLOW SWITCH
✓		WALL SPEAKER 'x'	✓		BELL
✓		DOOR/PROGRAM BELL	✓		BELL/SSTROBE
✓		AUDIO/VISUAL BEACON	✓		HORN
✓		HANGER	✓		HORN/SSTROBE
✓		SOUND OUTLET	✓		SPEAKER
SECURITY			✓		SPEAKER/SSTROBE
✓		SURVEILLANCE CAMERA 'x'	✓		STROBE
✓		CARD READER	✓		SPECIAL FUNCTION SIGNAL
✓		ELECTRONIC FOB READER	✓		SIGNALLING DEVICE - CEILING
✓		ELECTRIC HINGE	✓		END OF LINE RESISTOR
✓		ELECTROMAGNETIC LOCK	✓		SUITE SIGNAL ISOLATOR
✓		DOOR CONTACT	✓		SUITE SIGNAL SILENCE SWITCH
✓		DOOR STRIKE	✓		FIRE FIGHTER EMERGENCY TELEPHONE
✓		DOOR RELEASE PUSH BUTTON	✓		DOOR HOLDER
✓		ELECTRONIC KEYPAD	✓		DOOR CLOSER
✓		SIREN	✓		SMOKE ALARM
✓		INTEGRATION MODULE BOX	✓		SMOKE/CARBON MONOXIDE ALARM
✓		NURSE CALL STATION 'x'	✓		SMOKE/CARBON MONOXIDE ALARM RELAY
✓		NURSE CALL DOME LIGHT	✓		FIRE SMOKE DAMPER
INCIDENTALS			✓		ABOVE FINISHED GRADE
✓		EXISTING, TO REMAIN UNCHANGED	✓		ABOVE FINISHED FLOOR
✓		RELOCATED	✓		ABOVE FINISHED CEILING
✓		EXISTING, TO BE MODIFIED	✓		BELOW FINISHED GRADE
✓		EXISTING, TO BE DELETED	✓		BELOW FINISHED FLOOR
✓		WET LOCATION (*CATEGORY 1)	✓		BELOW FINISHED CEILING
✓		CORROSIVE LOCATION (*CATEGORY 2)	✓		WEATHER PROOF
* CATEGORY DEFINITIONS ARE AS PER SECTION 22 OF THE ONTARIO ELECTRICAL SAFETY CODE.			✓		MECHANICAL POWER SUPPLY

SITE LIGHTING NOTES

- IN AREA ABOVE PARKING GARAGE, MOUNT BOLLARD ON FLOATING CONCRETE BASE. SEE LIGHT BOLLARD DETAIL.
- PROVIDE DIRECT CONNECTION TO NEW SIGN. PROVIDE POWER AND COMMS CONDUITS. SEE FUTURE SIGN DETAIL. PROVIDE POWER WIRING FROM CONTROLLED CIRCUIT INDICATED.

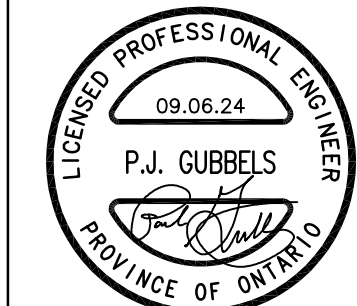
GENERAL NOTES

- THIS DRAWING INDICATES THE PROPOSED OUTDOOR LIGHTING FIXTURES FOR THIS DEVELOPMENT. THE PHOTOMETRIC DATA ILLUSTRATED INDICATES LINES OF MAINTAINED HORIZONTAL ILLUMINATION AS WELL AS POINT-BY-POINT VALUES IN LUX. THE PHOTOMETRIC DATA DOES NOT TAKE INTO ACCOUNT CONTRIBUTIONS FROM ANY STREET LIGHTING FIXTURES.
- ALL EXTERIOR FIXTURES ARE FULL CUT OFF AND DARK SKY / NIGHT TIME FRIENDLY. SITE LIGHTING HAS BEEN DESIGNED TO CONSIDER ALL BUILDING AND USER NEEDS.



REVISIONS

ISSUED	2024-08-14	ISSUED FOR ALTC TECHNICAL REVIEW
	2024-07-18	ISSUED FOR SITE PLAN APPROVAL
	2024-08-15	ISSUED FOR BUILDING PERMIT SUBMISSION
	2024-09-06	ISSUED FOR SPA SUBMISSION #2



MNE Engineering, Inc.
22 Kewco Place - Box A
Kitchener, Ontario N2C 2G5
(519) 884-9408
www.mneengineering.ca



THE VILLAGE OF INNIS LANDING

800 YONGE ST, BARRIE, ON

Drawing Title: SITE LIGHTING PLAN

& LEGEND

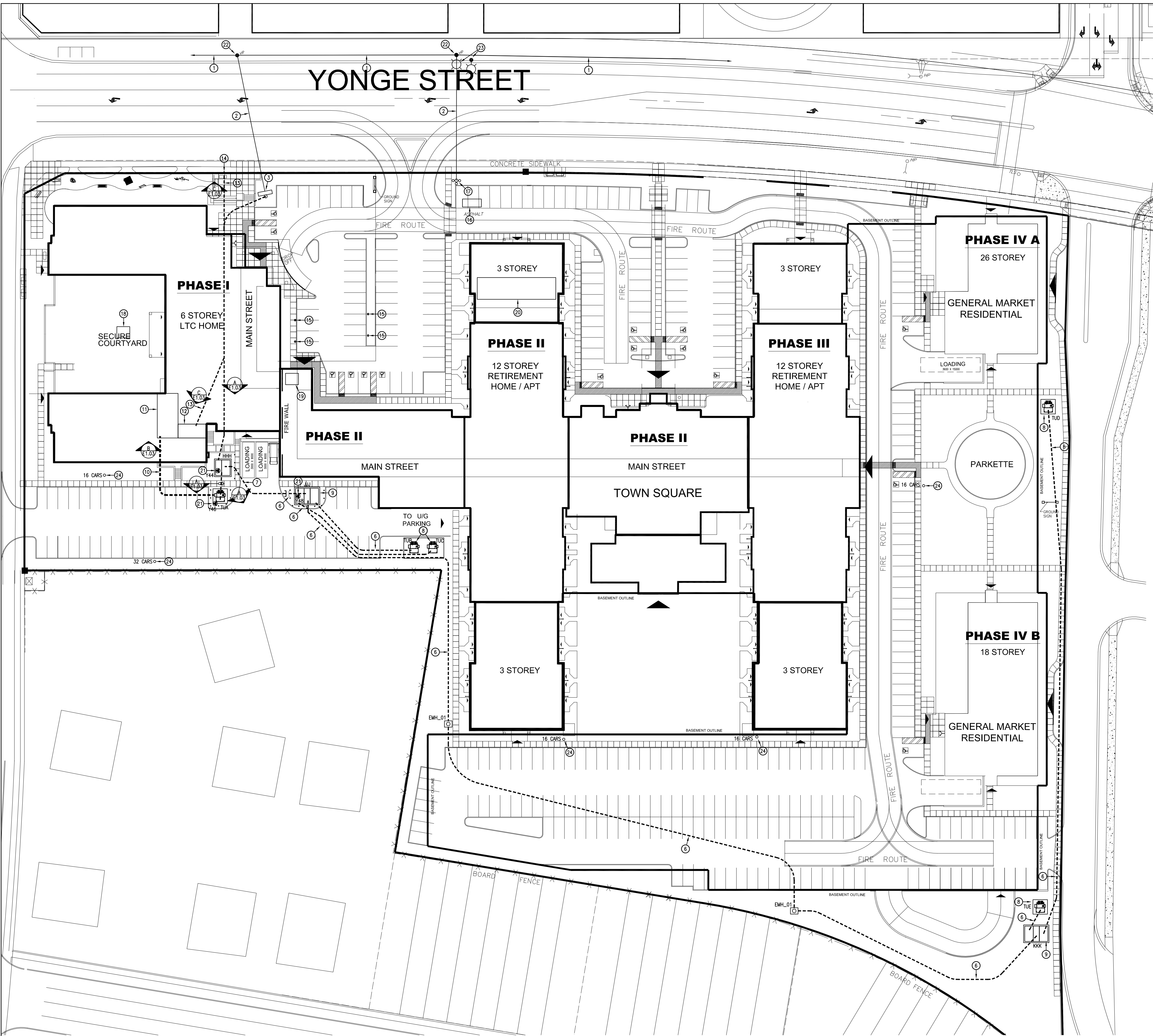
Checked By: P.J.G.

Project No.: 22049

Drawn By: K.M.M.

Date: JANUARY 2024

E1.01



SITE ELECTRICAL NOTES:

- EXISTING AERIAL POWER INFRASTRUCTURE SHALL REMAIN AND BE REWORKED AS REQUIRED BY ALECTRA.
- AERIAL WIRING PROVIDED BY ALECTRA. COORDINATE ALL INSTALLATIONS WITH ALECTRA.
- NEW POLE PROVIDED BY THE ELECTRICAL CONTRACTOR INCLUDING:
 - FREE-STANDING CONCRETE POLE, 50' TALL.
 - CUSTOMER-OWNED GANG-OPERATED FUSED LOAD BREAK SWITCH (SEE SPECIFICATIONS).
 - ALL GROUNDING, #2/0 BARE CU DOWN CONDUCTOR, TWO GROUND RODS AND 6"x6" GROUND MAT IN 12" DEEP CRUSHED STONE AT SWITCH HANDLE TO ESA REQUIREMENTS. SEE OESC SPEC 34.
 - BOND GROUND MAT TO SWITCH HANDLE WITH 2-2/0 CU OR EQUAL.
 - PRIMARY CONDUCTOR TERMINATION ON LOAD SIDE OF SWITCH INCLUDING 46KV STRESS CONES.
 - FRAMING TO OESC SPEC 18.4.
 - INSULATORS, LIGHTNING ARRESTERS, ETC.
 - FASTENERS, HARDWARE, LUGS, CONNECTORS, ETC. TO FORM A COMPLETE INSTALLATION.
- HIGH VOLTAGE DUCT BANK BY THIS CONTRACTOR. SEE SECTION AND SINGLE LINE DIAGRAM. COORDINATE LOCATION OF DUCT BANK WITH SANITARY, STORM AND WATER PIPING INSTALLATIONS AND MAINTAIN MAXIMUM CLEARANCE.
- PAD-MOUNTED POWER TRANSFORMER PROVIDED BY THE ELECTRICAL CONTRACTOR. SEE SPECIFICATIONS.
- APPROXIMATE PATH OF FUTURE HIGH VOLTAGE DUCT BANK SERVING FUTURE BUILDINGS. FOR REFERENCE ONLY. EXTENSION OF DUCT BEYOND POINT INDICATED SHALL NOT BE INCLUDED AS PART OF THIS PROJECT.
- HIGH VOLTAGE DUCT BANK BY THIS CONTRACTOR FROM SWITCHGEAR HHH TO 2.0M BEYOND THE EXTENT OF PHASE I. SEE SECTION AND SINGLE LINE DIAGRAM. CAP AND SEAL CONDUITS. MEASURE AND MARK LOCATION ON SITE AND ON AS-BUILTS. COORDINATE LOCATION OF DUCT BANK WITH SANITARY, STORM AND WATER PIPING INSTALLATIONS AND MAINTAIN MAXIMUM CLEARANCE.
- PROPOSED LOCATION OF FUTURE TRANSFORMER TO SERVE FUTURE PHASES. FOR REFERENCE ONLY. TRANSFORMER SHALL NOT BE INCLUDED AS PART OF THIS PROJECT.
- PROPOSED LOCATION OF FUTURE HIGH VOLTAGE SWITCHGEAR TO SERVE FUTURE PHASES. FOR REFERENCE ONLY. SWITCHGEAR SHALL NOT BE INCLUDED AS PART OF THIS CONTRACT.
- NEW SECONDARY DUCTBANK BY THIS CONTRACTOR. SEE SECTIONS AND SINGLE LINE DIAGRAM.
- APPROXIMATE LOCATION OF MAIN ELECTRICAL ROOM ON THE LOWER FLOOR LEVEL. SEE FLOOR PLANS.
- APPROXIMATE LOCATION OF MAIN COMMUNICATIONS ROOM ON THE LOWER FLOOR LEVEL. SEE FLOOR PLANS.
- NEW COMMUNICATIONS DUCTBANK BY THIS CONTRACTOR. SEE SECTION FOR DETAILS.
- TERMINATE COMMUNICATIONS DUCT BANK AT PROPERTY LINE. CAP AND SEAL DUCTS AND INDICATE PRECISE LOCATION ON AS BUILT DRAWINGS. COORDINATE WITH UTILITIES.
- ELECTRICAL HAND HOLE MOUNTED FLUSH WITH FINISHED GRADE/SIDEWALK CENTRE POSITIONED 0.5M BACK FROM EDGE OF CURB, CENTERED ON PARKING LINES WHERE APPLICABLE TO SERVE FUTURE EV CHARGING STATIONS. EXTEND ONE 38MM PVC CONDUIT FROM EACH HANDHOLE TO MAIN ELEC ROOM.
- SUGGESTED LOCATION OF TEMPORARY (CONSTRUCTION) ELECTRICAL SERVICE ENTRANCE, METERING & DISTRIBUTION EQUIPMENT IN WEATHERPROOF SEA CONTAINER. REFER TO SPECIFICATIONS FOR DETAILS.
- SUGGESTED LOCATION OF TEMPORARY SERVICE TRANSFORMER POLE. TRANSFORMERS AND POLE TOP PRIMARY TERMINATIONS BY ALECTRA. ALL OTHER WORK BY THIS CONTRACTOR. REFER TO SPECIFICATIONS FOR DETAILS.
- APPROX LOCATION OF TOWER CRANE. PROVIDE ELECTRICAL SERVICE TO CRANE AS DESCRIBED IN THE SPECIFICATIONS.
- APPROX LOCATION OF TEMPORARY CONSTRUCTION ELEVATOR. PROVIDE ELECTRICAL SERVICE AS DESCRIBED IN THE SPECIFICATIONS.
- APPROX LOCATION OF CONSTRUCTION TRAILER COMPLEX. PROVIDE ELECTRICAL SERVICE TO TRAILERS AS DESCRIBED IN THE SPECIFICATIONS.
- PROVIDE DIRECT CONNECTION TO ANTI-CONDENSATION HEATER IN SWITCHGEAR/TRANSFORMER FROM THE CIRCUIT INDICATED.
- ALL POLE TOP WORK BY ALECTRA/OTHERS.
- TO FACILITATE TEMPORARY CONSTRUCTION SERVICE CONNECTIONS, THE EXISTING MUNICIPALLY OWNED STREET LIGHT SHALL BE REMOVED AND PLACED ON A NEW ADJACENT TEMPORARY WOOD POLE. ONCE THE TEMPORARY SERVICE IS NO LONGER REQUIRED, THE STREET LIGHT SHALL BE REINSTATED ON THE EXISTING PERMANENT POLE AND THE TEMPORARY WOOD POLE REMOVED. ALL THIS WORK SHALL BE PERFORMED BY OTHERS INDEPENDENT OF THIS CONTRACT.
- PROVIDE 2-75MM PVC CONDUITS FROM THIS LOCATION TO THE MAIN ELECTRICAL ROOM TO SERVE FUTURE EV CHARGERS FOR THE QTY OF PARKING SPACES INDICATED. TERMINATE CONDUITS SIMILAR TO FUTURE SIGN DETAIL.

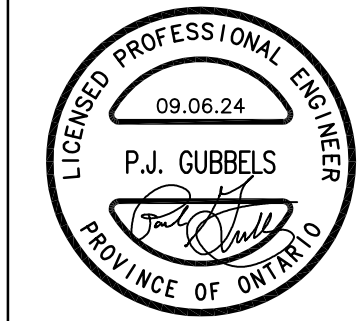
UTILITY CONTACTS, CHARGES & COORDINATION

THE ELECTRICAL CONTRACTOR SHALL CARRY CASH ALLOWANCES FOR WORK BEING PERFORMED BY OTHERS. REFER TO THE "ELECTRICAL SPECIFICATIONS" FOR DETAILS.

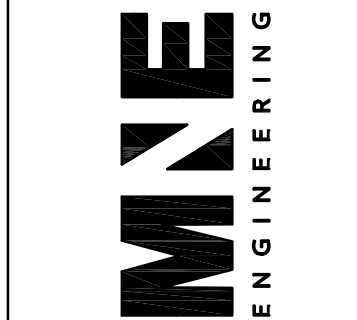
THE ELECTRICAL CONTRACTOR SHALL BE RESPONSIBLE FOR THE COORDINATION WITH THE VARIOUS UTILITIES AND SHALL CONTACT THEM AT A SUITABLE TIME DURING THE CONSTRUCTION SO THAT THE NECESSARY SERVICES ARE INSTALLED IN A TIMELY FASHION. ENSURE THAT EACH OF THE UTILITIES LISTED HEREIN OBTAINS A FULL COPY OF THE ELECTRICAL DRAWINGS & SPECIFICATIONS FOR COORDINATION & REVIEW:

POWER: Mr. Geoff Harris Alectra Utilities 55 Patterson Road Barrie, ON L4N 3V9 Tel: (705) 722-7244 Cell: (705) 623-6861 Email: geoff.harris@electrautilities.com	TELEPHONE: Mr. Andrew Fournier Bell Canada Access Network 40 Beacon Road Barrie, ON L4M 3B1 Tel: (705) 812-7244 Cell: (705) 627-0897 Email: andrew.fournier@bell.ca	CATV: Ms. Xinyi Wang Rogers Communication Canada Inc. 1 Spurling Drive Barrie, ON L4M 6B8 Tel: (705) 812-4587 Email: Xinyi.Wang@rci.rogers.com
---	--	--

REVISED	REVISIONS
2024-08-14	ISSUED FOR MLTC TECHNICAL REVIEW
2024-07-18	ISSUED FOR SITE PLAN APPROVAL
2024-08-15	ISSUED FOR BUILDING PERMIT SUBMISSION
2024-09-06	ISSUED FOR SPA SUBMISSION #2



MNE Engineering, Inc.
22 Kewco Place - Box A
Kitchener, Ontario N2C 2G5
(519) 884-9408
www.mneengineering.ca



THE VILLAGE OF INNIS LANDING
800 YONGE ST, BARRIE, ON

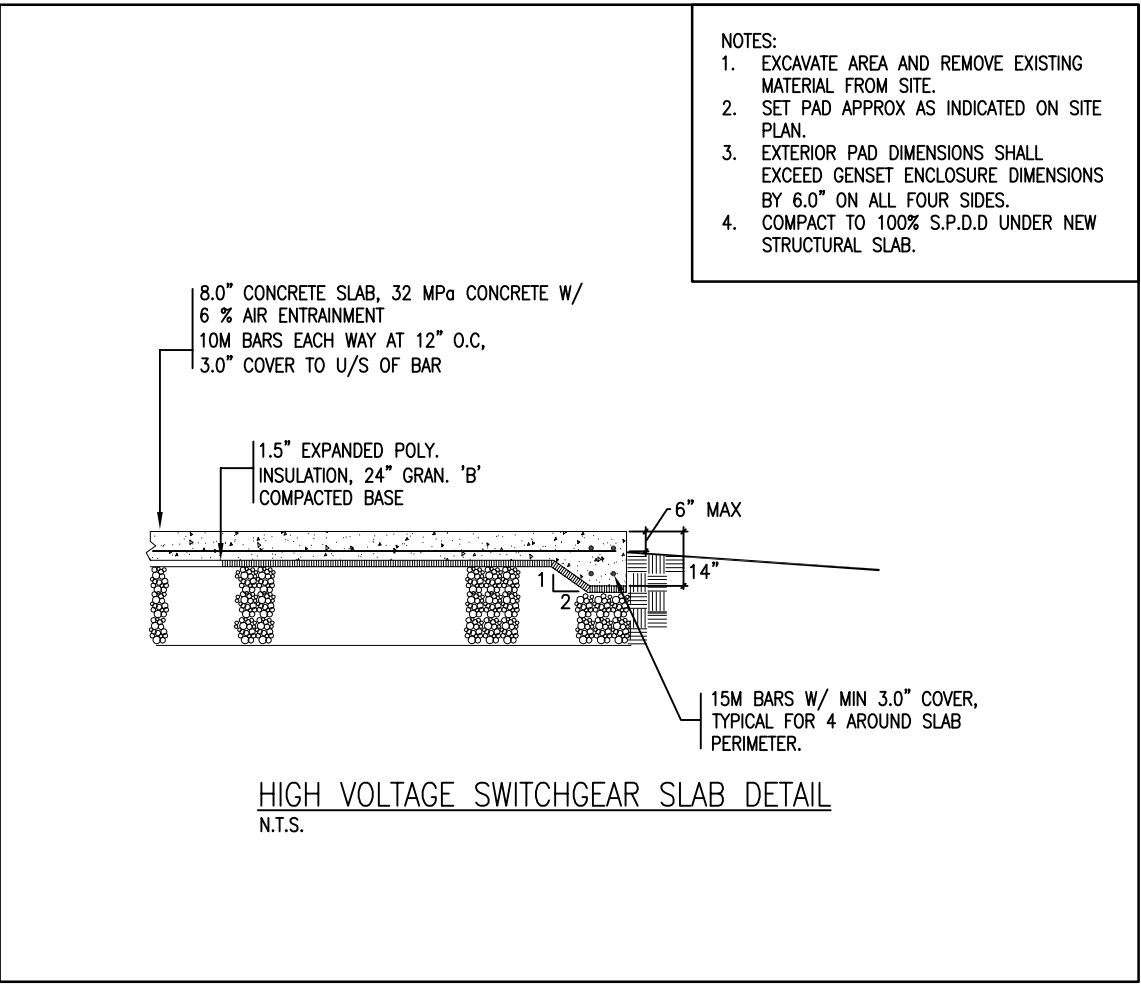
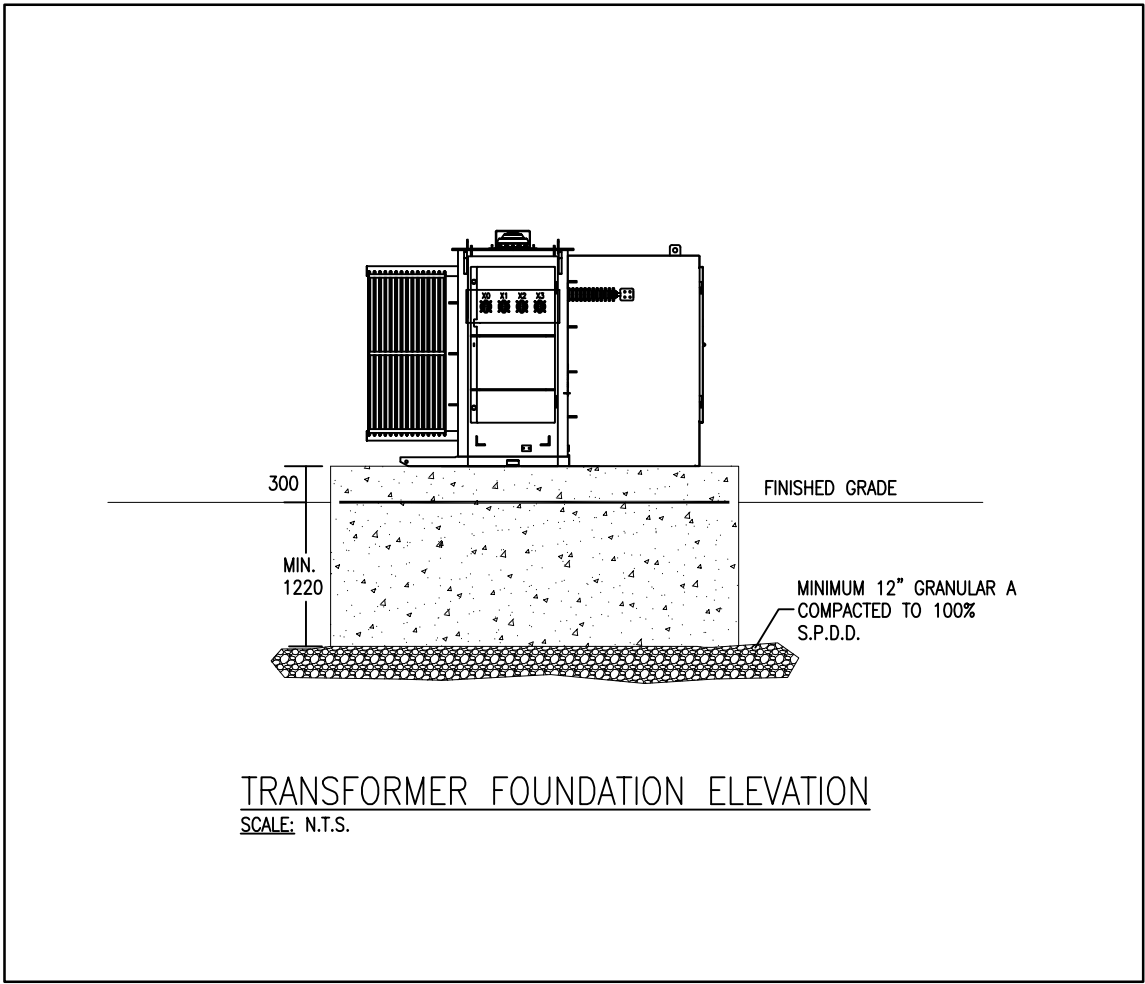
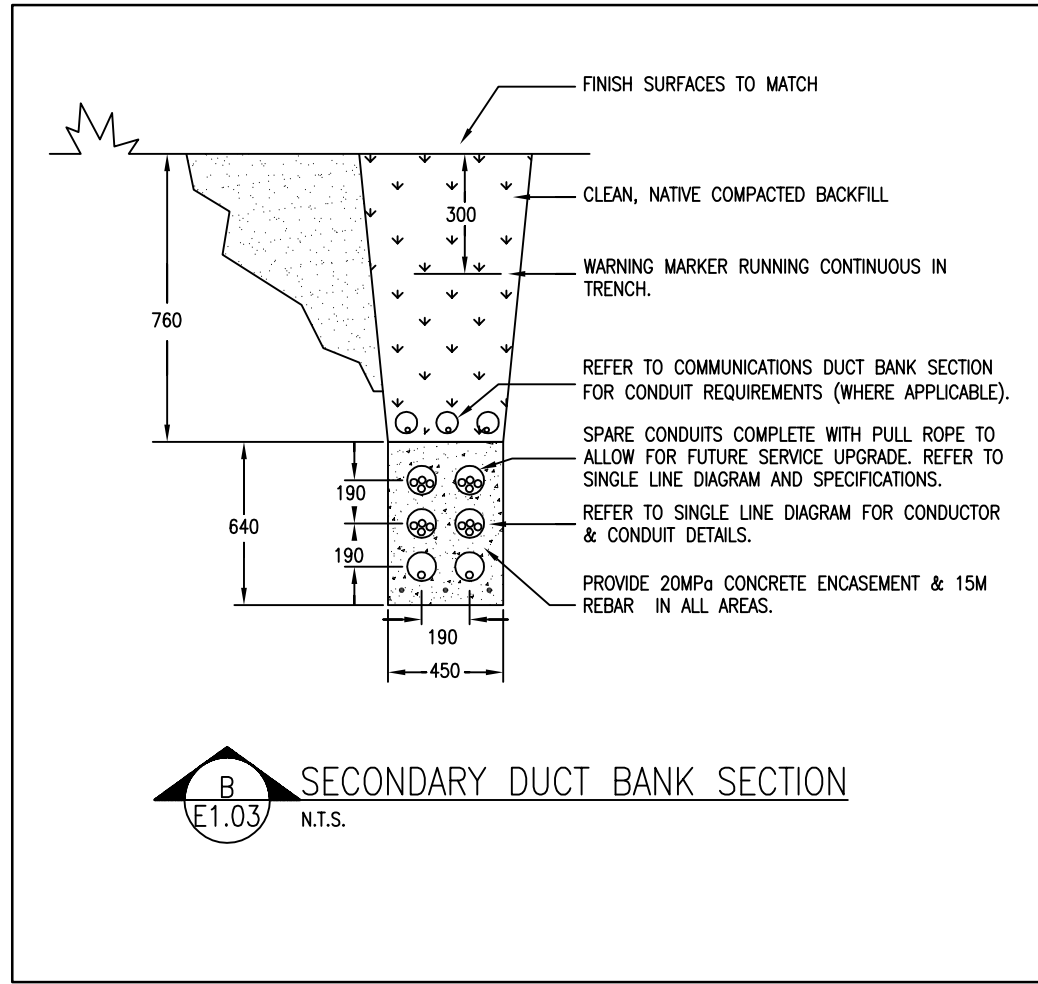
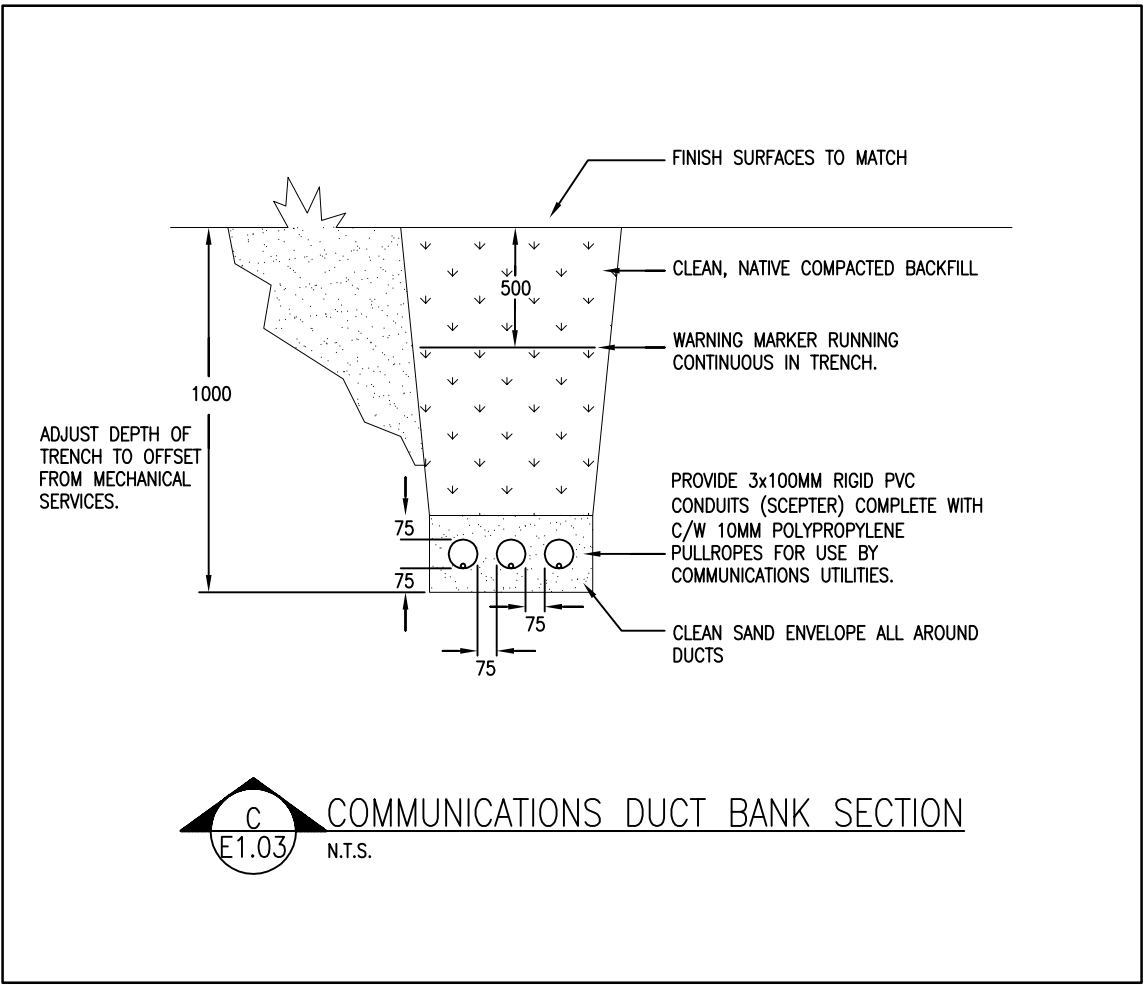
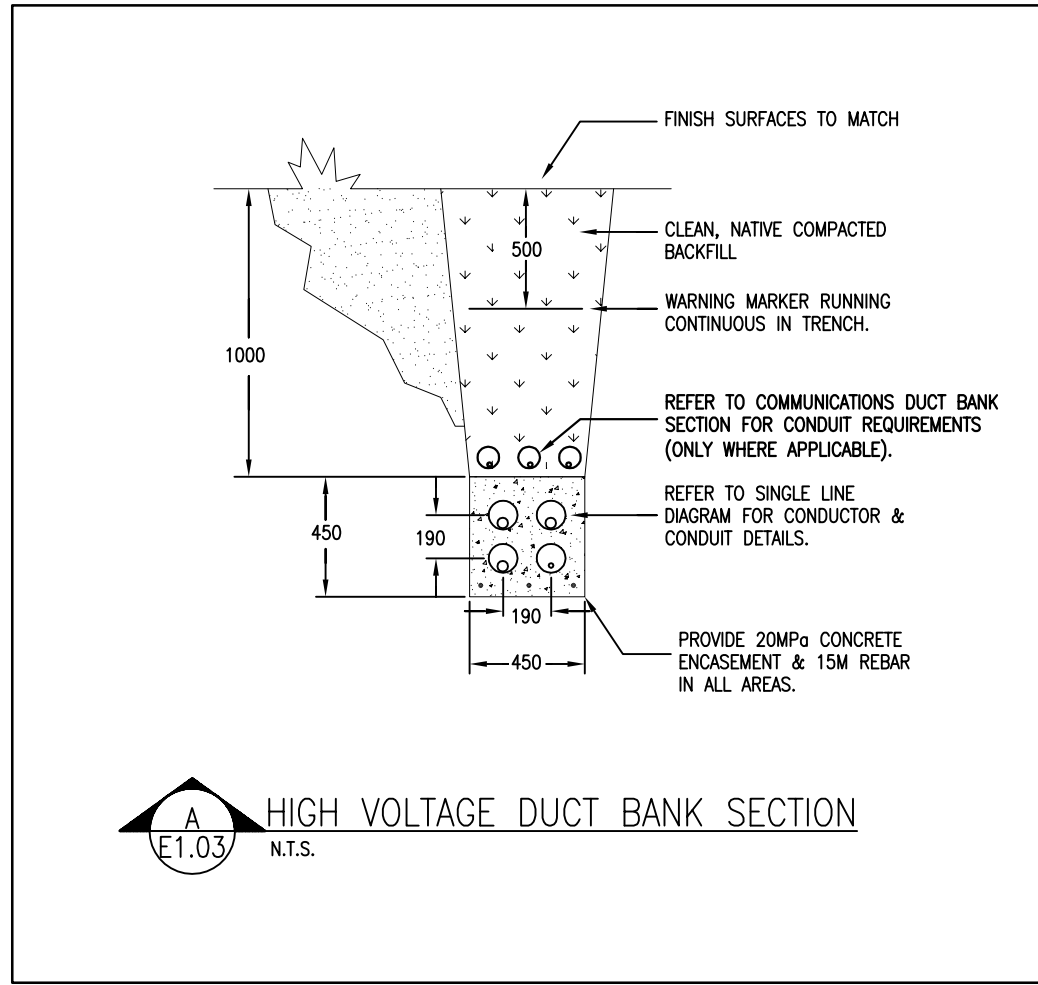
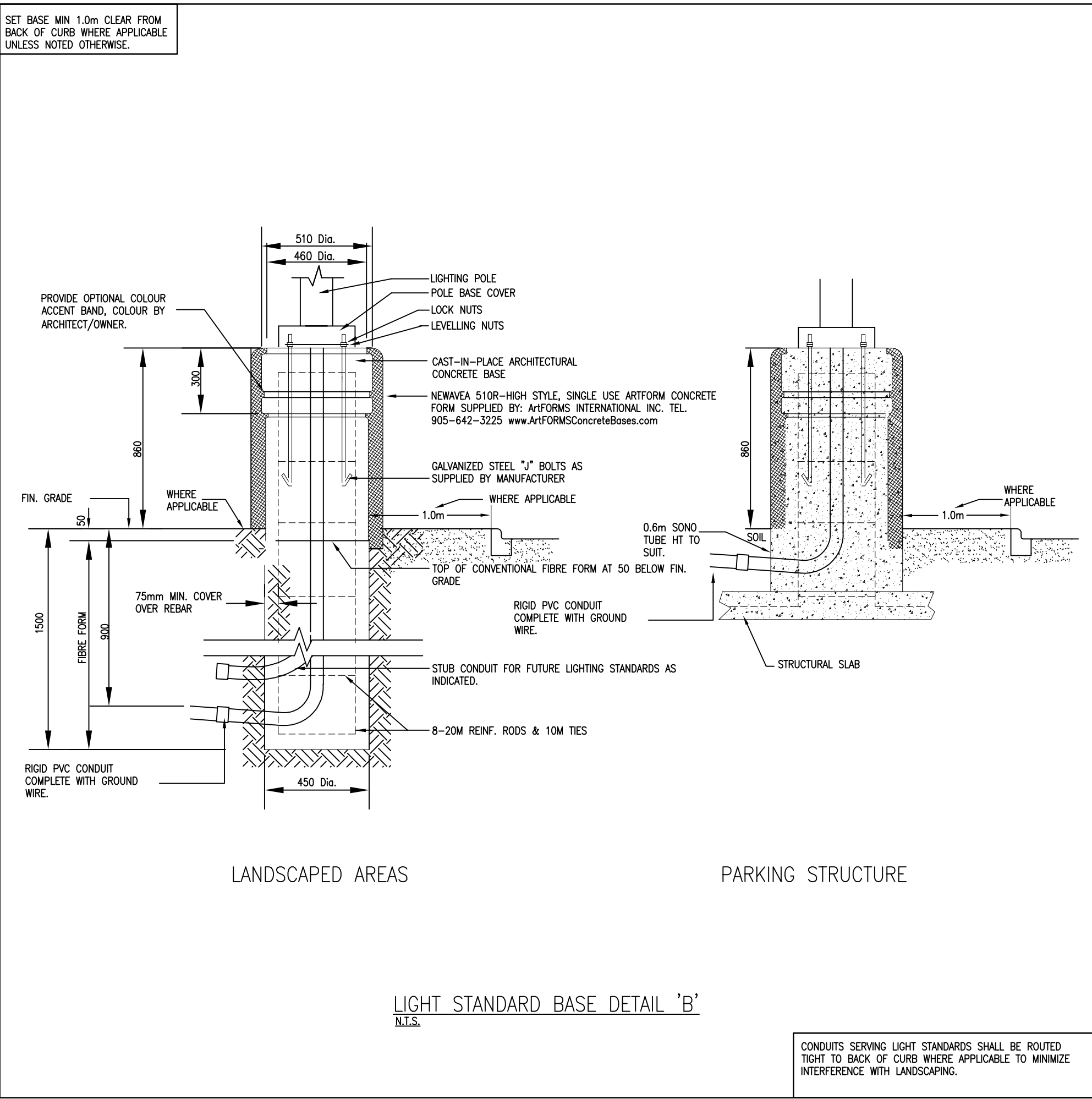
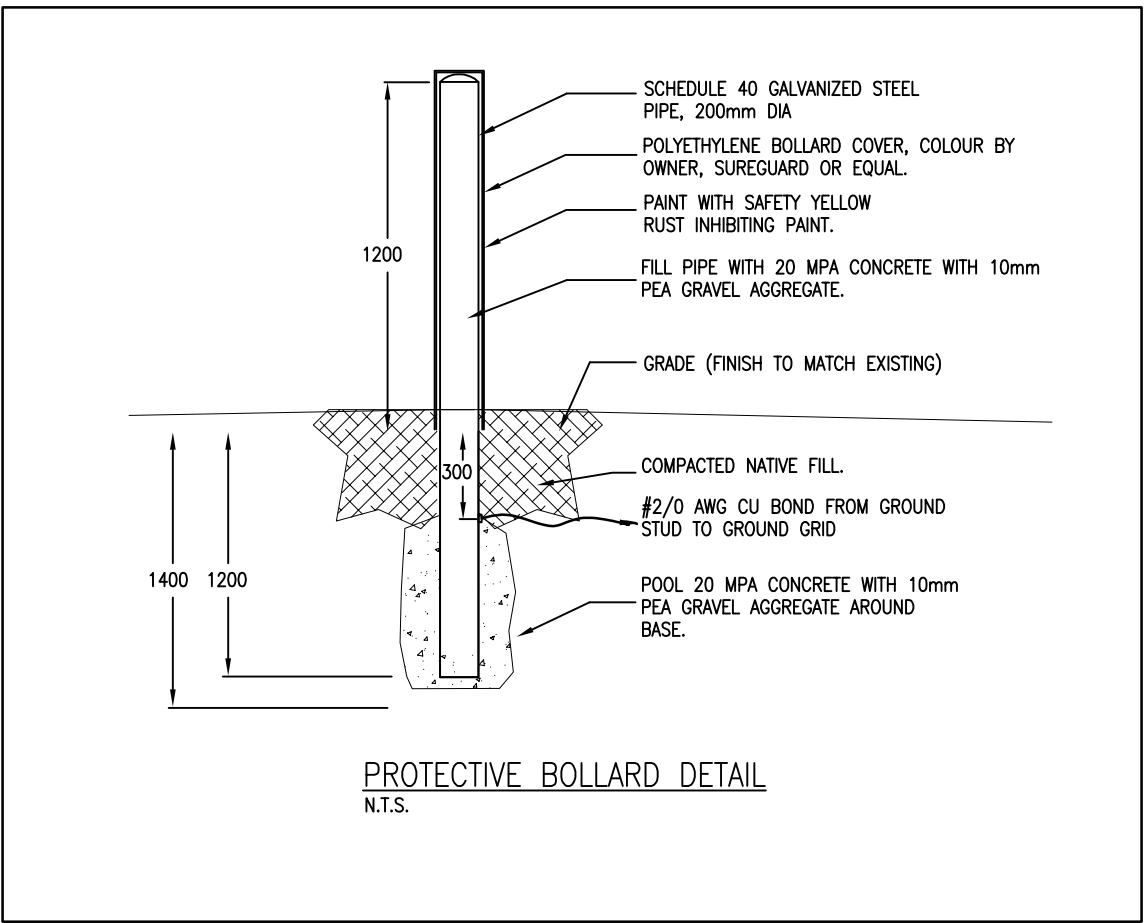
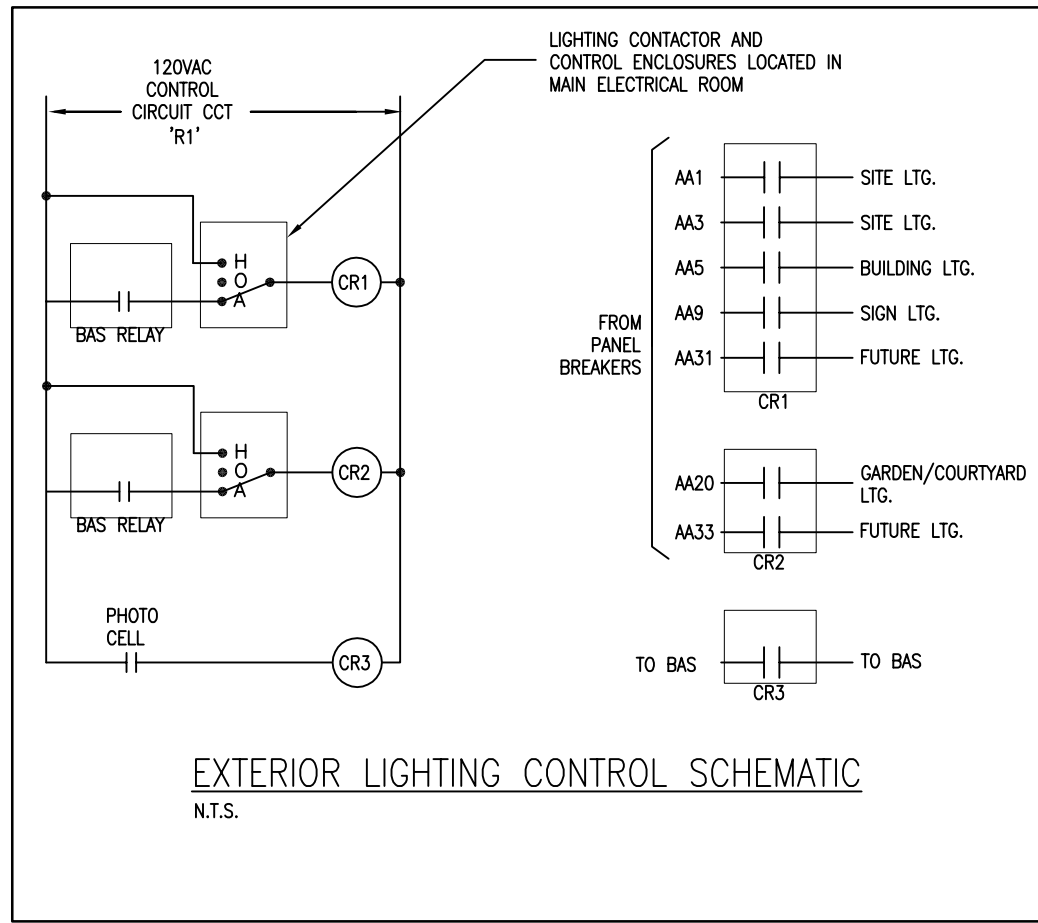
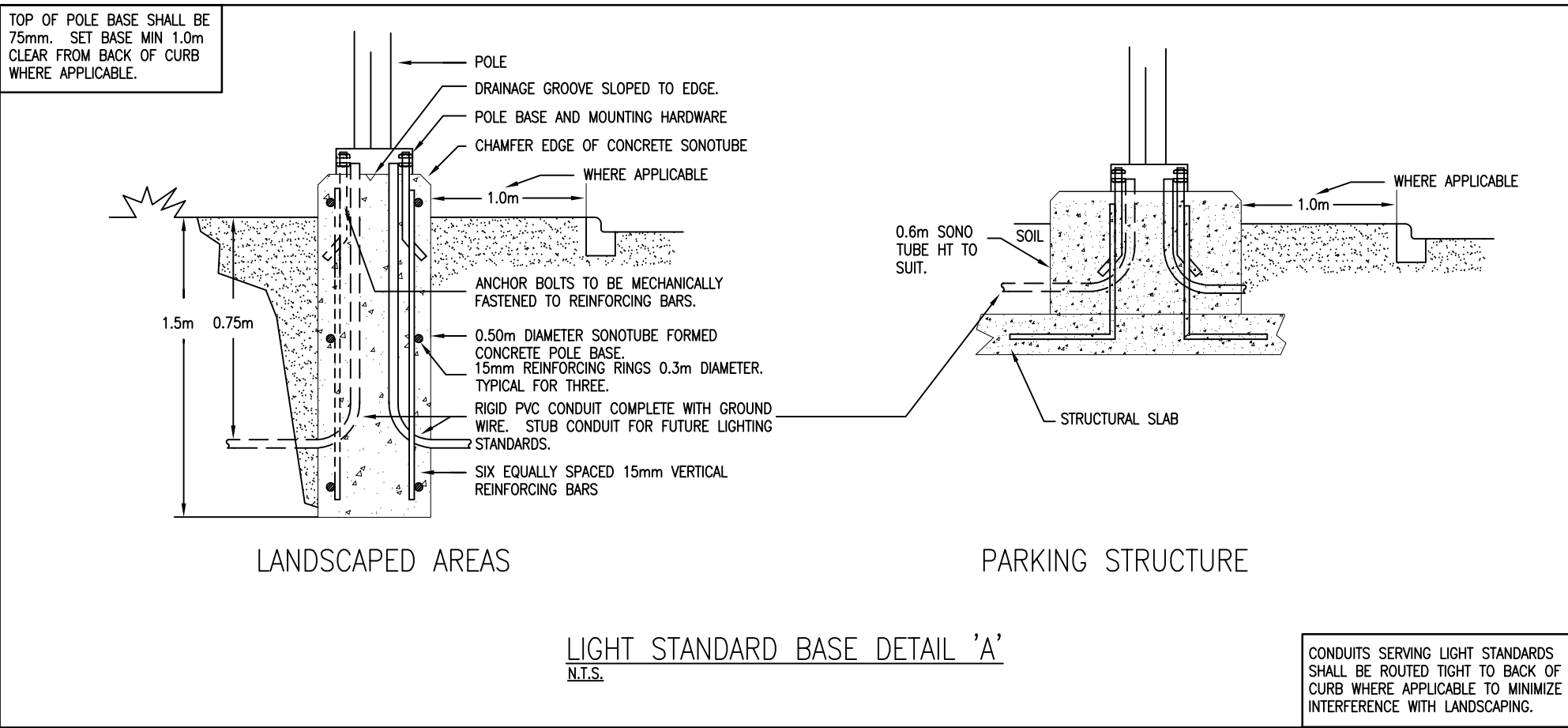
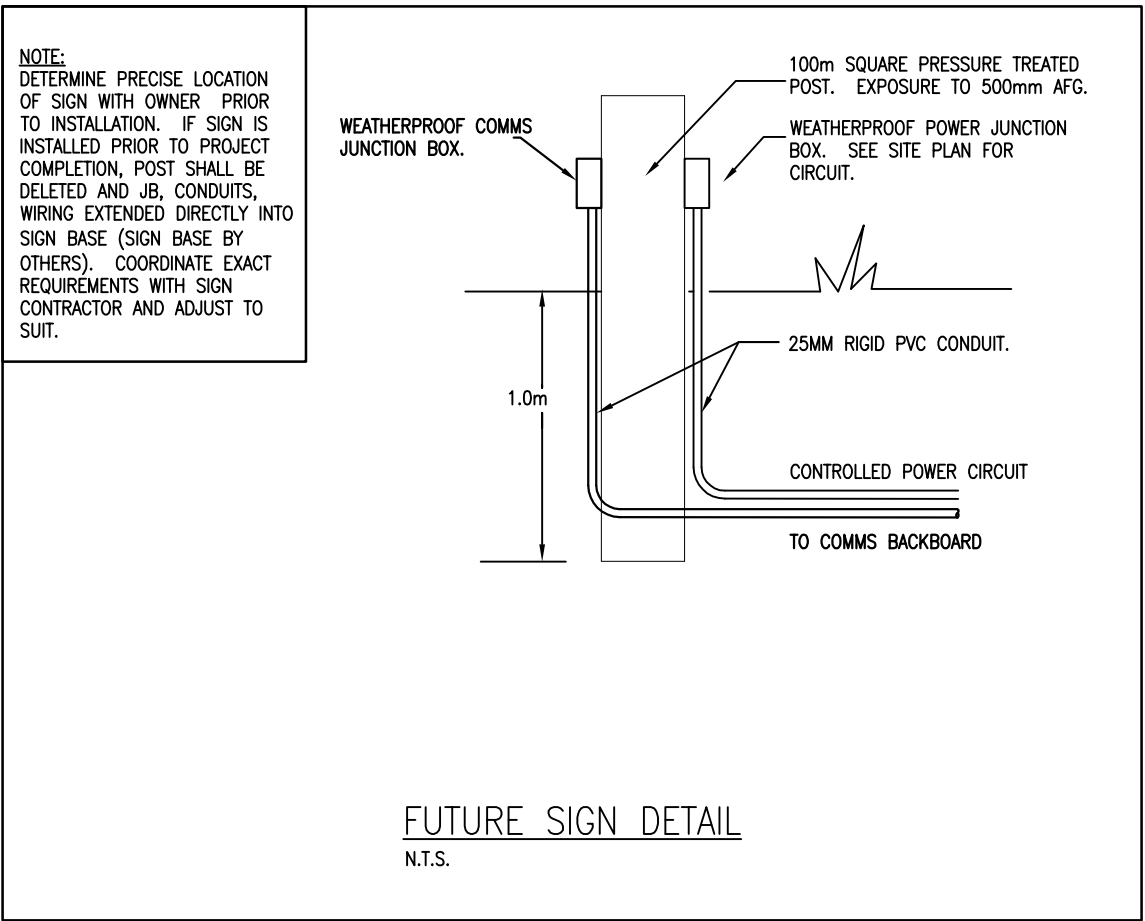
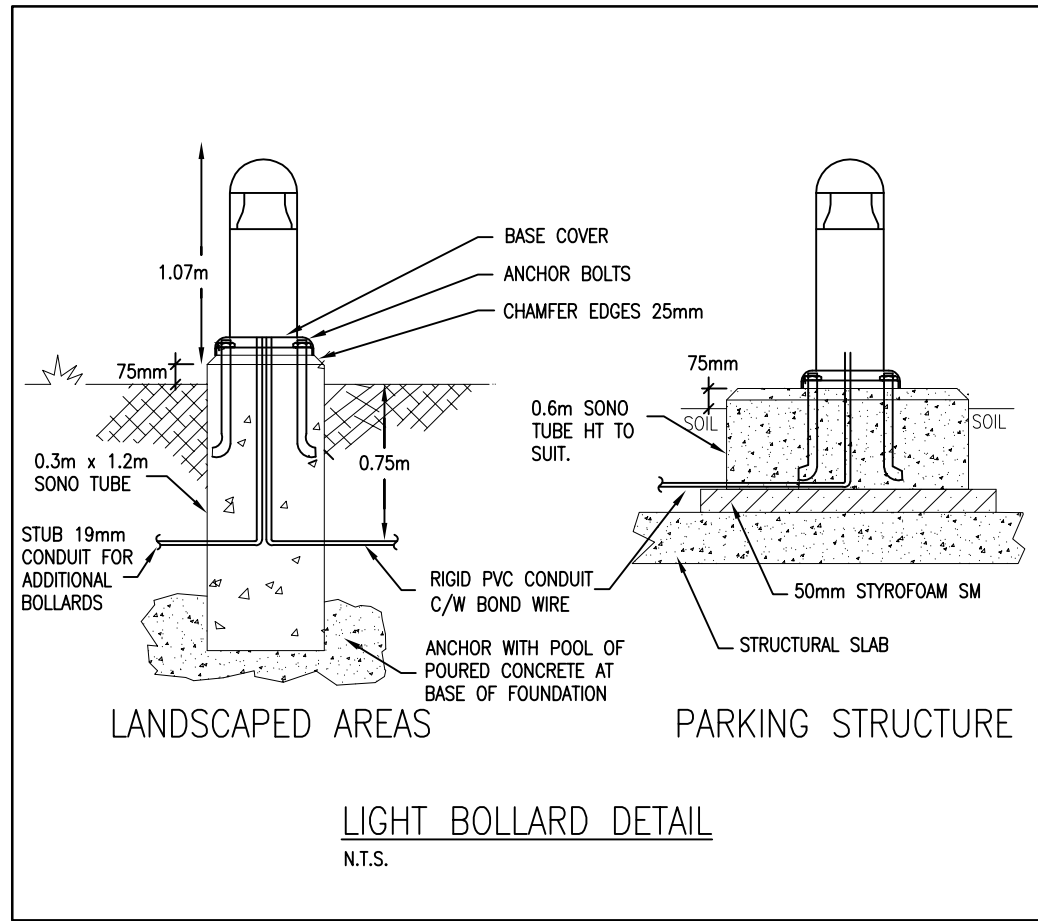
Project No.: 22049

Checked By: P.J.G.

Drawn By: K.M.M.

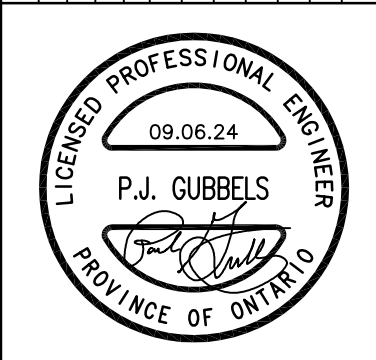
Date: JANUARY 2024

ELECTRICAL SITE PLAN



REVISIONS		ISSUED	2024-08-14	ISSUED FOR MLTC TECHNICAL REVIEW
		2024-07-18	ISSUED FOR SITE PLAN APPROVAL	
		2024-08-15	ISSUED FOR BUILDING PERMIT SUBMISSION	
		2024-09-06	ISSUED FOR SPA SUBMISSION #2	

REVISIONS		ISSUED	2024-08-14	ISSUED FOR MLTC TECHNICAL REVIEW
		2024-07-18	ISSUED FOR SITE PLAN APPROVAL	
		2024-08-15	ISSUED FOR BUILDING PERMIT SUBMISSION	
		2024-09-06	ISSUED FOR SPA SUBMISSION #2	



MNE ENGINEERING

MNE Engineering Inc.
22 Kewco Place - Box A
Kitchener, Ontario N2C 2G5
(519) 884-9408
www.mneengineering.ca

THE VILLAGE OF INNIS LANDING		800 YONGE ST, BARRIE, ON	
ELECTRICAL SITE PLAN		DETAILS	
Checked By: P.J.G.	Project No.: 22049	Drawn By: K.M.M.	Date: JANUARY 2024



EHL16

Hanover Pendant
Eurotique Family



Order Number	
Notes	
Size	

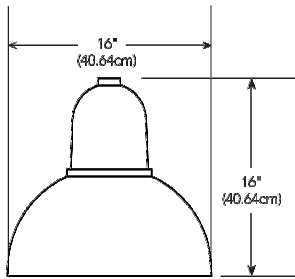
Introduction

The Hanover is a European-styled pendant luminaire suitable for use with a variety of Eurotique decorative arms and poles.

Intended for use in pedestrian areas such as retail environments, public parks, city centers and commercial areas or other spaces with decorative requirements and a contemporary theme.

Specifications

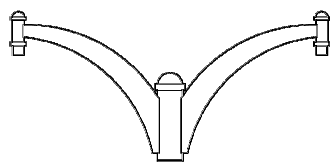
EPA: 1.2ft²
Height: 16"
Diameter: 16"
Weight: 60 lbs



Ordering Information

EXAMPLE: EHL16 ST 63LED 350MA 4K R3 GCF 120 DD8XD

Series	Size	Performance Package	Color Temperature	Distribution	Lens Options	Mounting	Finish
EHL16	ST RT F3	Smooth Ringed Fluted	4KLED 350MA 6,000 lumens 4KLED 350MA 6,700 lumens 4KLED 350MA 6,000 lumens	3K 3000K 4K 4000K 5K 5000K	R2 Type 2 R3 Type 3 R4 Type 4 R5 Type 5	GCF Glass clear flat GCS Glass clear sag	DD8D Super durable dark bronze DL1D Super durable black DN8D Super durable natural aluminum DW8D Super durable white ANBK Antique black ANDB Antique dark bronze ANGS Antique dark green ANVG Antique verde green



EAL Series

Eurotique Family
Pendant Arm

Order Number	
Notes	
Type	

Introduction

This European styled simple EAL Wall Bracket is available in single, twin or wall bracket configurations and supports the Eurotique Munich or Hanover luminaires.

Specifications

EPA: 1.97ft²

EAL4: Fits on 3.375" dia. X 11" tall tenon
EAL5: Fits on 4.375" dia. X 11" tall tenon

EAL4: Luminaire mounts via plumber housing
EAL5: Luminaire mounts via 1.5" NPT swivel nipple

Ordering Information

EXAMPLE: EAL4/1 ANBK PER PE1

Series	Finish	Options
EAL4/1	DD8D	Super durable dark bronze
EAL5/1	DL1D	Super durable black
EAL4/2	DN8D	Super durable natural aluminum
EAL5/2	DN8D	Super durable white
EAL4WB	ANBK	Antique black
EAL5WB	ANBK	Antique dark bronze
	ANGS	Antique dark green
	ANVG	Antique verde green

Notes:
1. PER, PEBS and PEBSF replace the center flail.
2. PER, PEBS and PEBSF not available with EAL4WB and EAL5WB.
3. Wall Bracket Product details must be ordered separately.

Notes:
Consult Factory for RAL colors or custom match

'XfX' FIXTURE

'XfX' ARM



Paseo CE21T4A

Approval – Specification

Project: _____ Order: _____
Qty: _____ Luminaire: _____ Type: _____

Ordering Code

Model	Lens	Distribution	Performance Package	CCT	Volts	Surge Protector
CER17AA	FOG Flat Glass Clear PFG Flat Glass Frosted NL+ No Lens <small>*Consult factory for PFG rating when the No Lens option is selected.</small>	T1 Type 1 T1A Type 1A T1AH8 Type 1A with HS T2 Type 2 T2S Type 2 with HS T2M Type 2M T2MH8 Type 2M with HS T3 Type 3 T3H8 Type 3 with HS T3M Type 3M T3MH8 Type 3M with HS T4 Type 4 T4H8 Type 4 with HS T8 Type 5 <small>* Backward code</small>	P10 (2900lm) P20 (4200lm) P30 (5400lm) P40 (8000lm) P60 (7500lm) P60 (6100lm) P70 (15100lm) P80 (14800lm)	30K 3000K 40K 4000K	INVOLT 120-277VAC HVOLT 347-480VAC	10KV 15kV/5kA 20KV 25kV/10kA

Adaptor	Photocell	Dimming	Color	Texture	Pre-finish
R16 9/4" (10cm) X 3" (7.5cm) long tenon R26 9/4" Ø to 2 7/8" (7cm) Ø to 3" (7.5cm) long tenon R36 9/4" Ø to 3" (7.5cm) Ø to 3" (7.5cm) long tenon	PT Photocell W/P-FIN acceptorplate (ANSI C136.41) PX Shorting cap W/P-FIN acceptorplate (ANSI C136.41) PTLN Long life photocell W/P-FIN acceptorplate (ANSI C136.41) PTDN W/P-FIN acceptorplate (ANSI C136.41)	DIM 0-10 volts wire for external controls PND006 Program 60% for 6 hours (CFM to 5kVA) PND008 Program 50% for 8 hours (CFM to 5kVA) SD* Field adjustable 10% increment step-dimming switch <small>* Consult factory for wireless controls and more information regarding SD option. * Not available when a photocell is selected.</small>	BK Black RAL3005 DC Dark green RAL6012 MA Marine blue RAL5013 BI Metallic silver RAL3006 (smooth only) BC Dark bronze RAL8010 BG Burgundy RAL3005 GM Moss green RAL3005 PG Pale grey RAL7042 WH White RAL3003 BNP Dark Holograph BZP Dark bronze Holograph GNP Green Holograph GNP+ Graphite Holograph GRP Grey Holograph SLP Silver Holograph WHP White Holograph	TX Textured SM Smooth	MS Marine grade pre-finish

* Backward code: The Olson light engine features 180° rotatable optics that can be customized as needed. This feature is a simple matter to coordinate two distribution types in a single full engine, simultaneously lighting a road and a bike path or sidewalk, for instance. Contact factory for more information.

Stamp/Approval: _____ Name: _____ Page 2 of 2

Name: _____ Date: _____

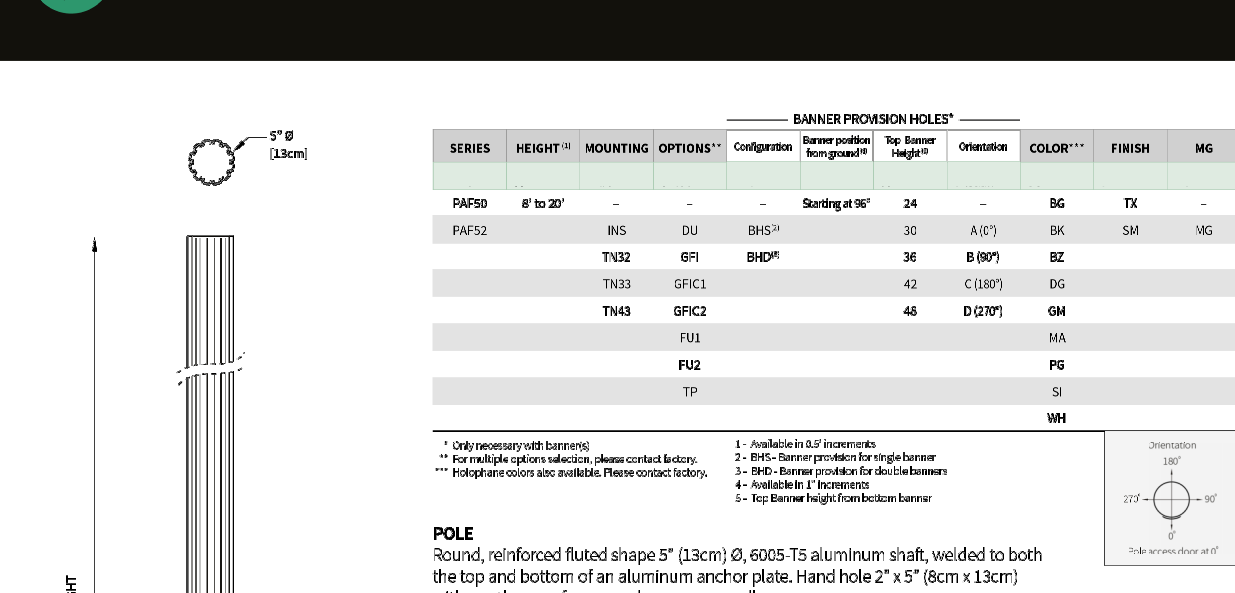
Cyclone Lighting: 2175 Dow Enterprises Blvd, Tempeville (QC) Canada J0Y 1W9 www.cyclonelighting.com
Phone: 1-866-438-5502 • info@cyclonelighting.com © 2023 Acuity Brands Lighting, Inc. All Rights Reserved.

Rev. 2023/06

'XGx' FIXTURE



PAF50/PAF52 - 5" Ø STRAIGHT POLE, FLUTED ALUMINUM



Banner Provision Holes*												
Series	R	H	Hole Location		Weight	EPB Rating (kg/ft)						Access Hole
			in	mm		in	mm	200psi	275psi	375psi	540psi	
[1] 10' max												
PAF50	8	2.64	0.11	2.8	1564	170	1332	630	412	3.7	2.12	30x30
PAF52	8	2.44	0.11	2.6	1524	143	1100	528	338	3.4	2.00	30x30
PAF54	8	2.24	0.11	2.4	1483	131	1009	492	313	3.20	1.92	30x30
PAF56	10	3.00	0.12	3.6	1657	180	2070	1150	717	5.22	3.05	36x36
PAF58	10	2.80	0.12	3.4	1600	167	1917	1056	663	4.86	2.88	36x36
PAF52	12	3.16	0.22	5.6	1700	220	1740	1041	717	5.69	3.54	21x21
PAF54	12	2.96	0.22	5.4	1650	207	1617	972	663	5.22	3.24	21x21
PAF56	14	4.27	0.23	6.2	1854	257	1882	839	635	3.60	1.96	36x36
PAF58	14	4.07	0.23	6.0	1813	244	1836	786	609	3.42	1.92	36x36
PAF52	16	4.52	0.33	7.2	2121	316	2164	556	292	1.50	0.86	36x36
PAF54	16	4.32	0.33	7.0	2080	303	2117	510	279	1.38	0.82	36x36
PAF56	18	4.84	0.33	7.8	2320	350	2310	432	230	1.18	0.70	36x36
PAF58	18	4.64	0.33	7.6	2279	337	2262	407	219	1.09	0.66	36x36
PAF52	20	5.16	0.43	8.2	2510	416	2510	372	209	1.09	0.66	36x36
PAF54	20	4.96	0.43	8.0	2469	403	2463	347	196	1.00	0.62	36x36
PAF56	22	5.16	0.42	8.6	2500	412	2518	318	180	1.08	0.62	36x36
PAF58	22	4.96	0.42	8.4	2459	400	2477	293	168	1.00	0.58	36x36
PAF52	30	6.39	0.61	10.2	3143	587	3189	270	150	0.86	0.50	36x36
PAF54	30	6.19	0.61	10.0	3102	574	3136	245	138	0.78	0.46	36x36
PAF56	36	6.82	0.62	10.8	3386	653	3378	216	120	0.70	0.42	36x36
PAF58	36	6.62	0.62	10.6	3345	640	3338	191	108	0.62	0.38	36x36