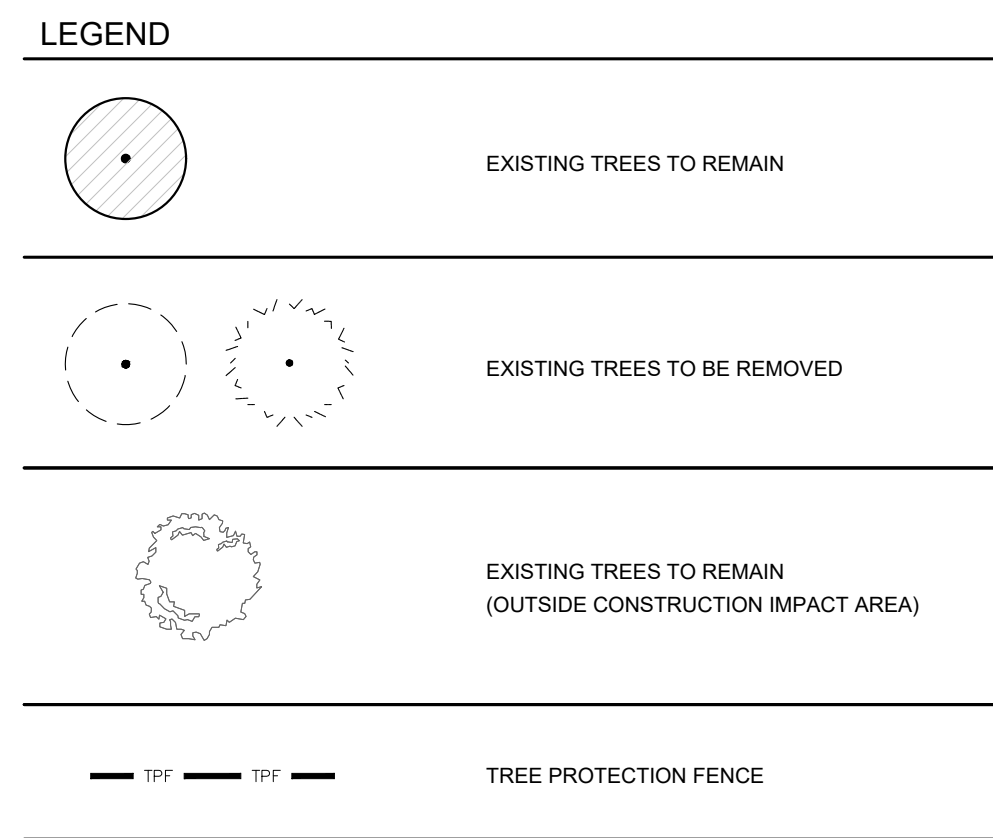
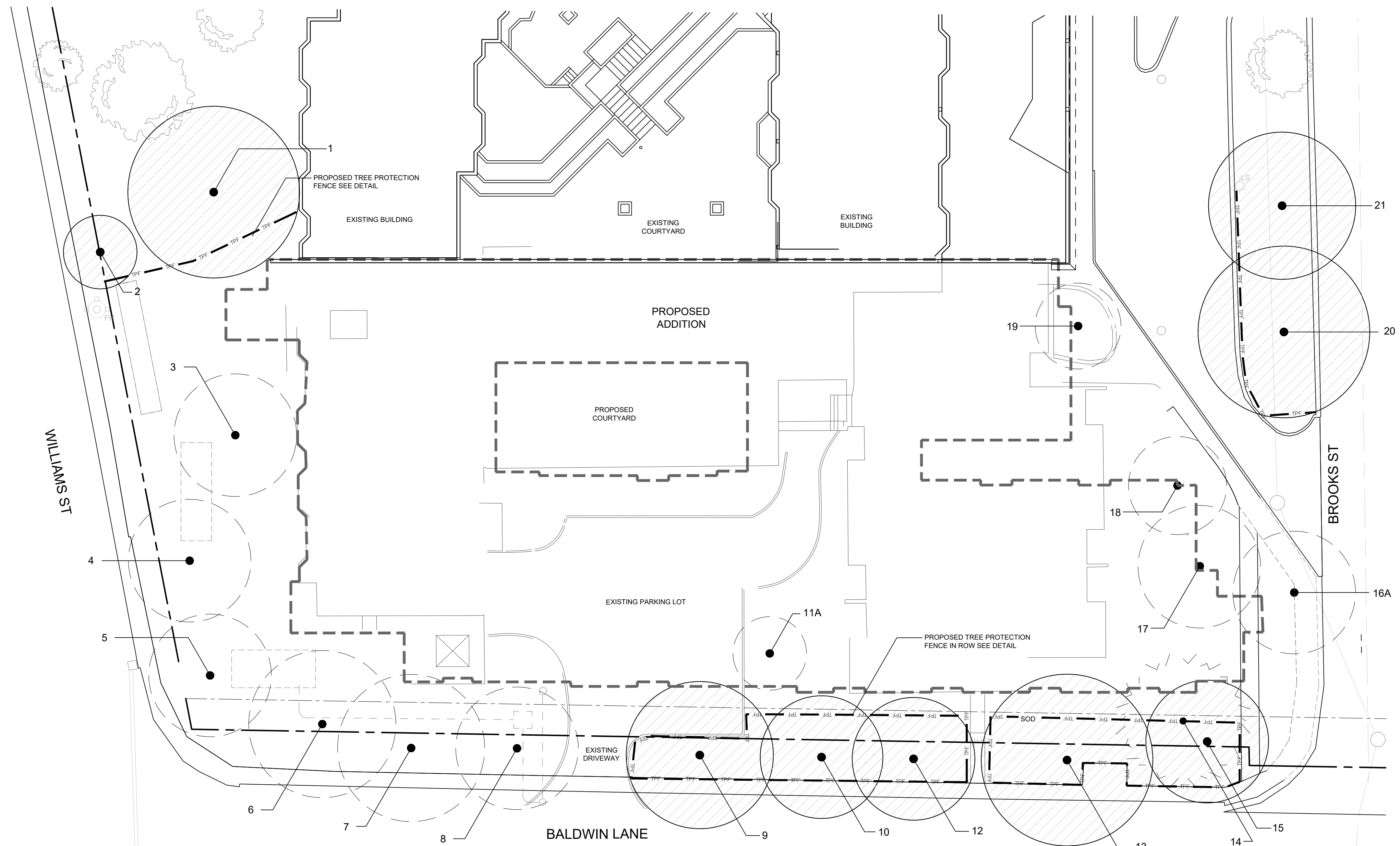


1 OVERALL SITE LAYOUT
SCALE 1:1000



- NOTES:
- SITE VISIT DATE: OCTOBER 6, 2022
 - TREE INVENTORY COMPLETED BY ISA CERTIFIED ARBORIST CATHERINE HODGINS R0N-2258A
 - TREE LOCATIONS BASED ON HILL DESIGN STUDIO FIELD SURVEY ON OCTOBER 6, 2022. SITE PLAN SHOWING EXISTING TREES PROVIDED BY SALTER PILON ARCHITECTURE INC. AND COUNTY OF SIMCOE AERIAL PHOTOGRAPHY
 - #A DENOTES APPROXIMATE LOCATION OF TREE AS PER HILL DESIGN FIELD SURVEY AND AERIAL PHOTOGRAPHY.

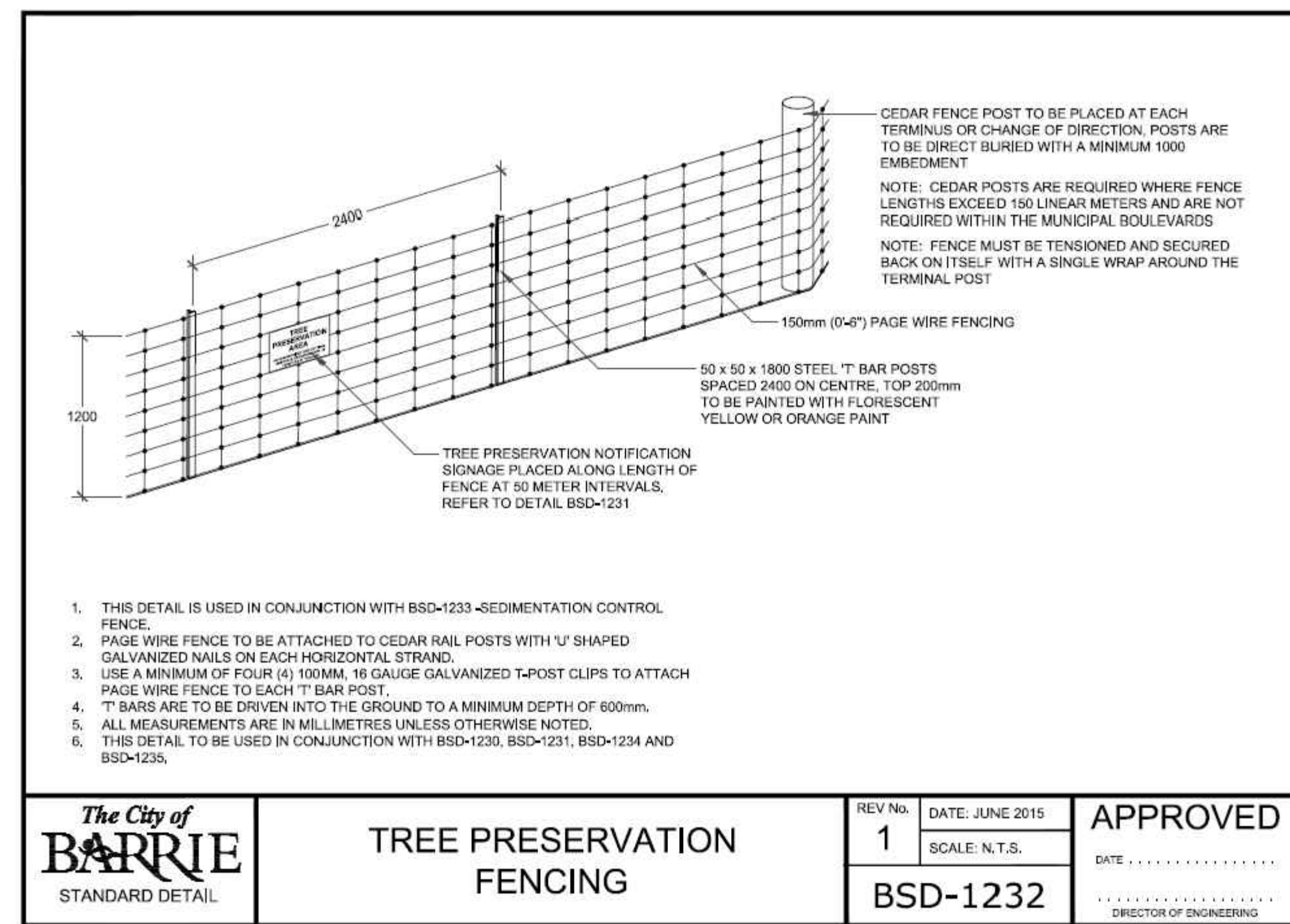


2 ENLARGEMENT 1 - TREE MANAGEMENT AREA

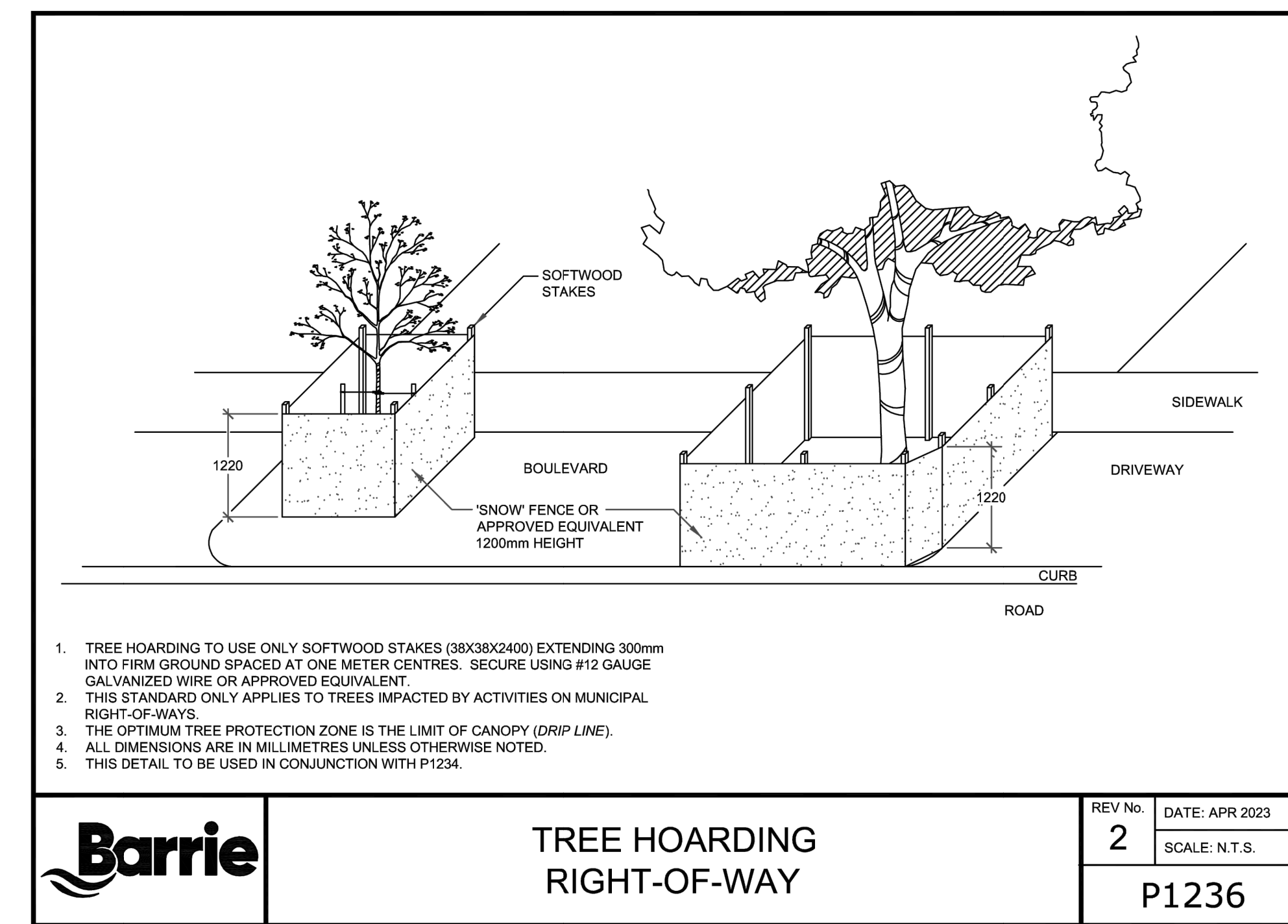
TREE INVENTORY LIST

ID #	Tree Species (Latin Name)	Tree Species (Common Name)	D.B.H (cm)	Condition	Ownership	Status	Comments
1	Tilia cordata	Little Leaf Linden	90	Good	Subject Site	Preserve	
2	Acer saccharum	Sugar Maple	28	Poor	Boundary Tree	Preserve	90% dead, trunk damage/decay
3	Juglans nigra	Black Walnut	28	Good	Subject Site	Remove	Co-dominant stems
4	Acer platanoides	Norway Maple	34	Good	Subject Site	Remove	
5	Acer platanoides	Norway Maple	36	Good	Subject Site	Remove	
6	Acer platanoides	Norway Maple	30	Good	Municipal	Remove	
7	Gleditsia triacanthos var. enermis	Honey Locust	39	Good	Municipal	Remove	
8	Gleditsia triacanthos var. enermis	Honey Locust	39	Fair	Municipal	Remove	Under hydro lines, pruned
9	Gleditsia triacanthos var. enermis	Honey Locust	34	Good	Municipal	Preserve	
10	Gleditsia triacanthos var. enermis	Honey Locust	28	Good	Municipal	Preserve	
11A	Juglans nigra	Black Walnut	16	Good	Subject Site	Remove	
12	Gleditsia triacanthos var. enermis	Honey Locust	35	Good	Municipal	Preserve	
13	Gleditsia triacanthos var. enermis	Honey Locust	40	Good	Municipal	Preserve	
14	Pinus nigra	Austrian Pine	48	Fair	Municipal	Remove	30% dieback
15	Gleditsia triacanthos var. enermis	Honey Locust	36	Good	Municipal	Preserve	
16A	Gleditsia triacanthos var. enermis	Honey Locust	36	Good	Subject Site	Remove	
17	Juglans nigra	Black Walnut	36	Good	Subject Site	Remove	
18	Malus sp.	Apple Species	24	Good	Subject Site	Remove	Memorial tree
19	Cercis canadensis	Eastern Redbud	28/22	Fair	Subject Site	Remove	Leaning, fruiting bodies present
20	Gleditsia triacanthos var. enermis	Honey Locust	38	Good	Subject Site	Preserve	
21	Gleditsia triacanthos var. enermis	Honey Locust	34	Good	Subject Site	Preserve	

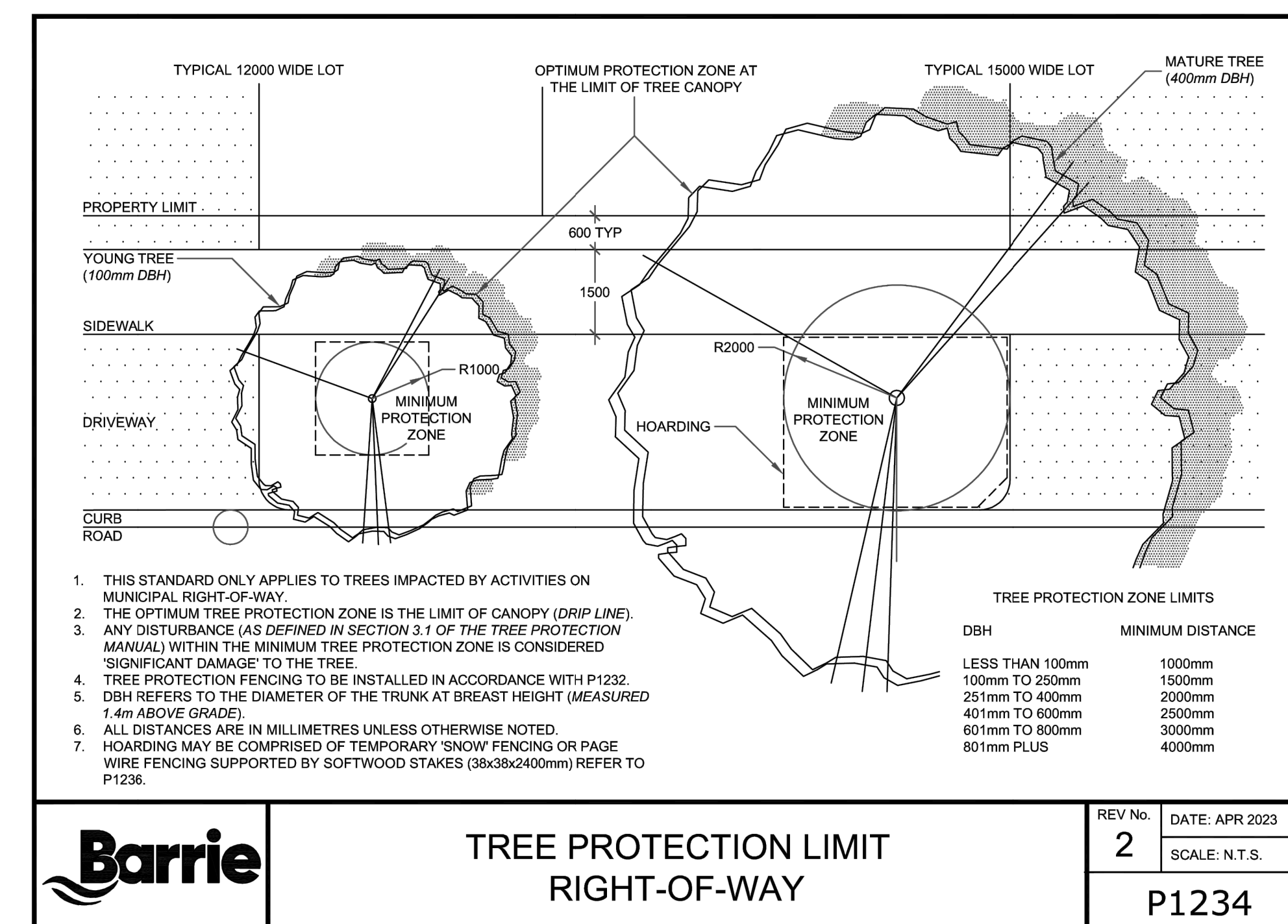
4 CITY OF BARRIE TREE PROTECTION FENCE ROW STANDARD DETAIL



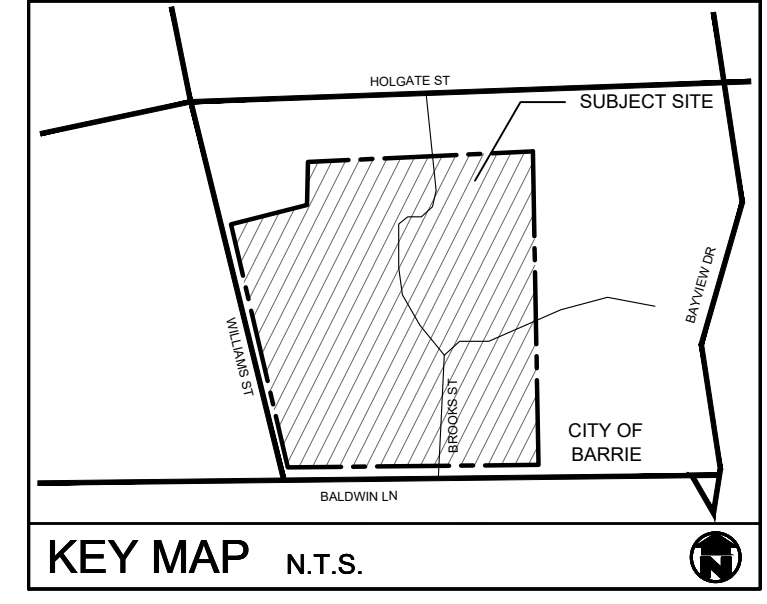
3 CITY OF BARRIE TREE PROTECTION FENCE STANDARD DETAIL



4 CITY OF BARRIE TREE PROTECTION FENCE ROW STANDARD DETAIL



5 CITY OF BARRIE TREE PROTECTION FENCE LIMIT OF ROW STANDARD DETAIL



GENERAL NOTES

1. ALL WORKMANSHIP WILL BE TO THE STANDARDS OF LANDSCAPE ONTARIO.
2. ALL PLANT MATERIAL TO BE NO. 1 GRADE NURSERY GROWN IN ACCORDANCE WITH THE CANADIAN STANDARDS FOR NURSERY STOCK, 6TH EDITION, 1998, BY THE CANADIAN NURSERY TRADES ASSOCIATION.
3. BACKFILL WILL CONSIST OF SOIL NATIVE TO THE SITE OR GENERAL SOIL TYPES ASSASSNATIVE TO THE SITE. TOPSOIL TO BE TESTED FOR NUTRIENT VALUE, AND AMENDED FOR OPTIMAL GROWTH AS PER THE RECOMMENDATIONS OF THE SOIL TEST.
4. CONTRACTOR SHALL MAINTAIN ALL LANDSCAPE AREAS UNTIL OWNER'S ACCEPTANCE OF PROJECT.
5. CONTRACTOR TO LOCATE ALL UNDERGROUND UTILITIES.
6. PLANTING MAY BE ADJUSTED TO SUIT LOCATIONS OF SITE UTILITY STRUCTURES/SERVICES.
7. ALL MATERIALS MUST BE APPROVED BY LANDSCAPE ARCHITECT PRIOR TO INSTALLATION.
8. SPREAD MULCH TO A MINIMUM OF 100mm COMPACTED DEPTH ON ALL TREE PITS AND PLANTING BEDS.
9. CHECK AND VERIFY ALL DIMENSIONS AND QUANTITIES PRIOR TO COMMENCEMENT OF WORK. ANY DISCREPANCIES ARE TO BE REPORTED IN WRITING TO THE LANDSCAPE ARCHITECT. QUANTITIES NOTED WITHIN THE PLAN SUPERSEDE THOSE IN THE PLANT LIST. ANY SUBSTITUTIONS SHALL BE APPROVED BY THE LANDSCAPE ARCHITECT.
10. SOD AS MARKED WITH NURSERY SOD ON A MINIMUM OF 100mm OF CLEAN TOPSOIL. FINE GRADE AND SOD ALL BOULEVARD AREAS TO MUNICIPAL SPECIFICATIONS AND REPAIR DAMAGE TO ADJACENT PROPERTIES, AS REQUIRED.
11. FINAL INSPECTION AND ACCEPTANCE OF PLANTING WORK SHALL COINCIDE WITH THE FINAL INSPECTION AND ACCEPTANCE OF ALL WORK INCLUDED IN THE CONTRACT.
12. ALL SEEDED SLOPES 3:1 AND GREATER TO RECEIVE EROSION CONTROL MATTING. PIN SOD ON ALL SLOPES OF 3:1 OR GREATER.
13. SUBMIT A WRITTEN GUARANTEE TO THE EFFECT THAT ALL PLANTS ACCEPTED DURING THE PERIOD OF JANUARY 1st TO JULY 15th SHALL BE GUARANTEED UNTIL JULY 15th OF THE FOLLOWING YEAR. PLANTS ACCEPTED DURING THE PERIOD OF JULY 15th TO DECEMBER 31st SHALL BE GUARANTEED FOR ONE YEAR FROM THE DATE OF ACCEPTANCE. THE GUARANTEE PERIODS LISTED ABOVE SHALL APPLY TO ALL NURSERY GROWN PLANTS.
14. AT THE TIME OF FINAL INSPECTION ALL PLANTS SHALL BE IN A HEALTHY, VIGOROUS GROWING CONDITION, PLANTED IN FULL ACCORDANCE WITH DRAWINGS AND CONDITIONS.
15. EXISTING CONDITIONS PLAN AS PER SALTER PILON ARCHITECTURE INC.
16. SITE PLAN INFORMATION AS PER SALTER PILON ARCHITECTURE INC.
17. ENGINEERING AS PER PEARSON ENGINEERING, AND IS PROVIDED FOR INFORMATION ONLY.
18. SITE LIGHTING BY OTHERS

IOOF SENIORS HOMES INC.



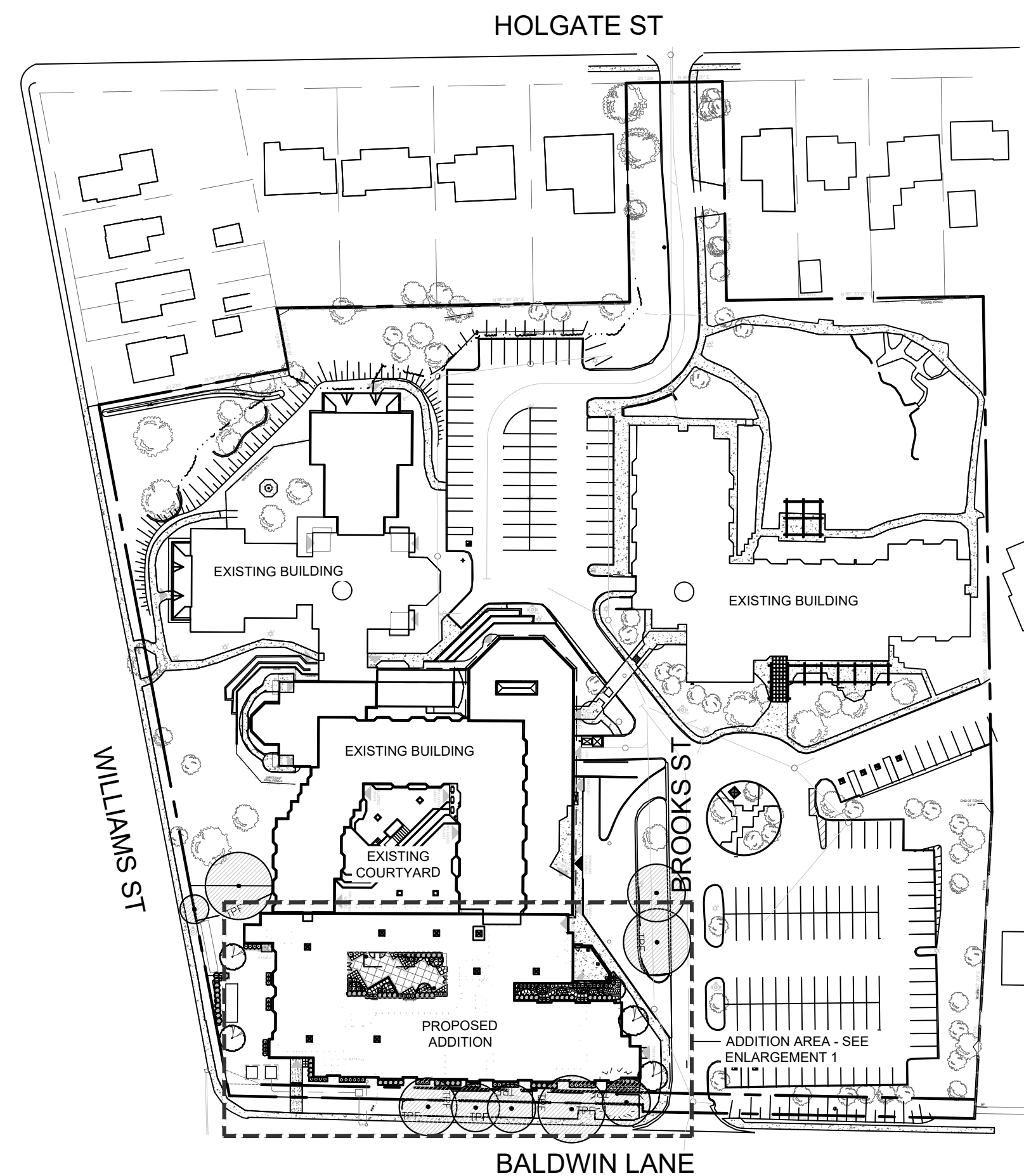
REVISIONS

no.	date	description	by
1.	Apr 21, 23	Issued for posting	CMH
2.	Jul 12, 23	Issued for approval	CMH
3.	May 17, 24	Issued for Ministry Approval	EH
4.	May 23, 24	Issued for approval	EH
5.	Jul 23, 24	Issued for Site Plan Amendment	EH

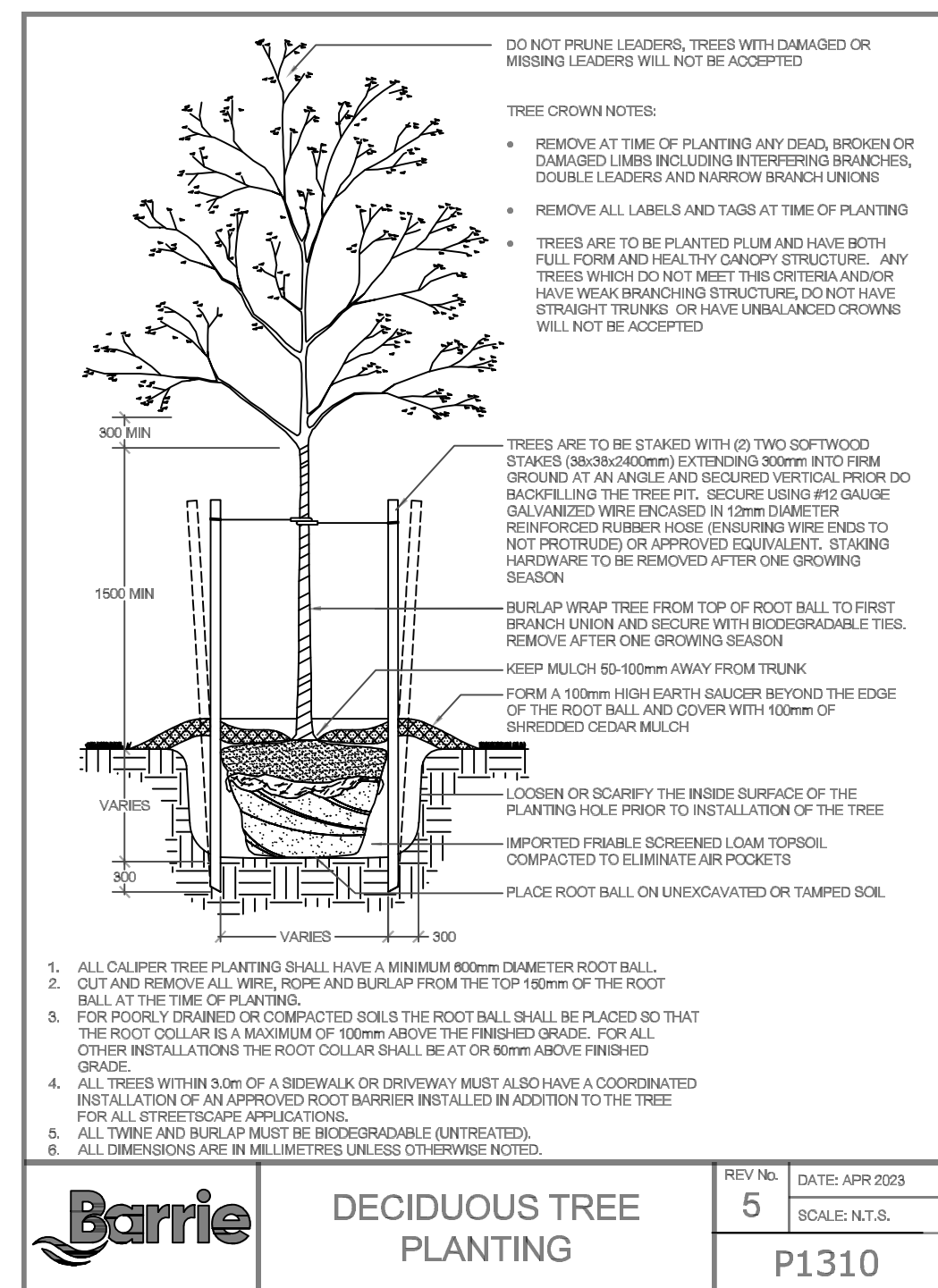
IOOF EXPANSION
10 Brooks Street
City of Barrie

Tree Management Plan

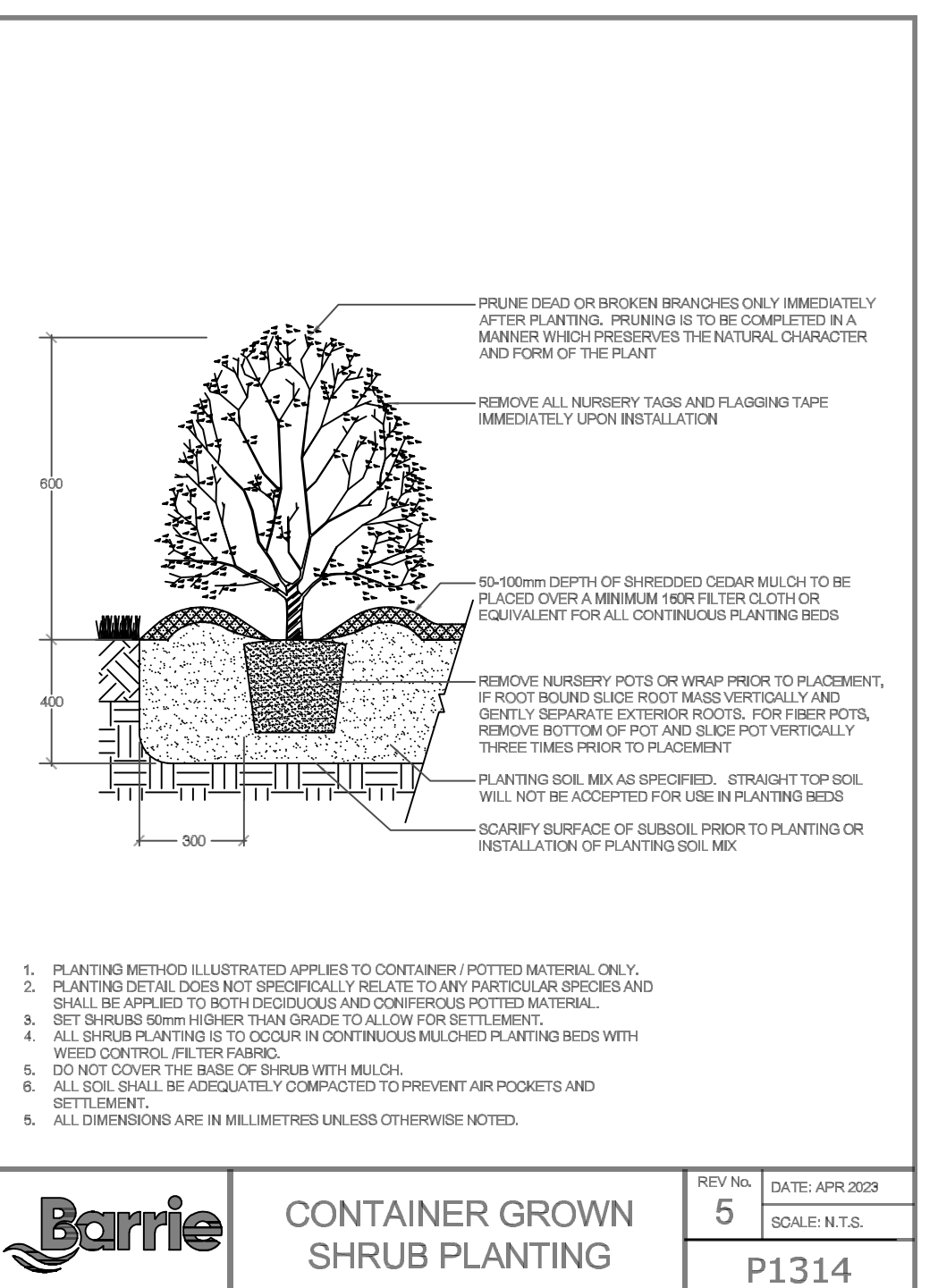




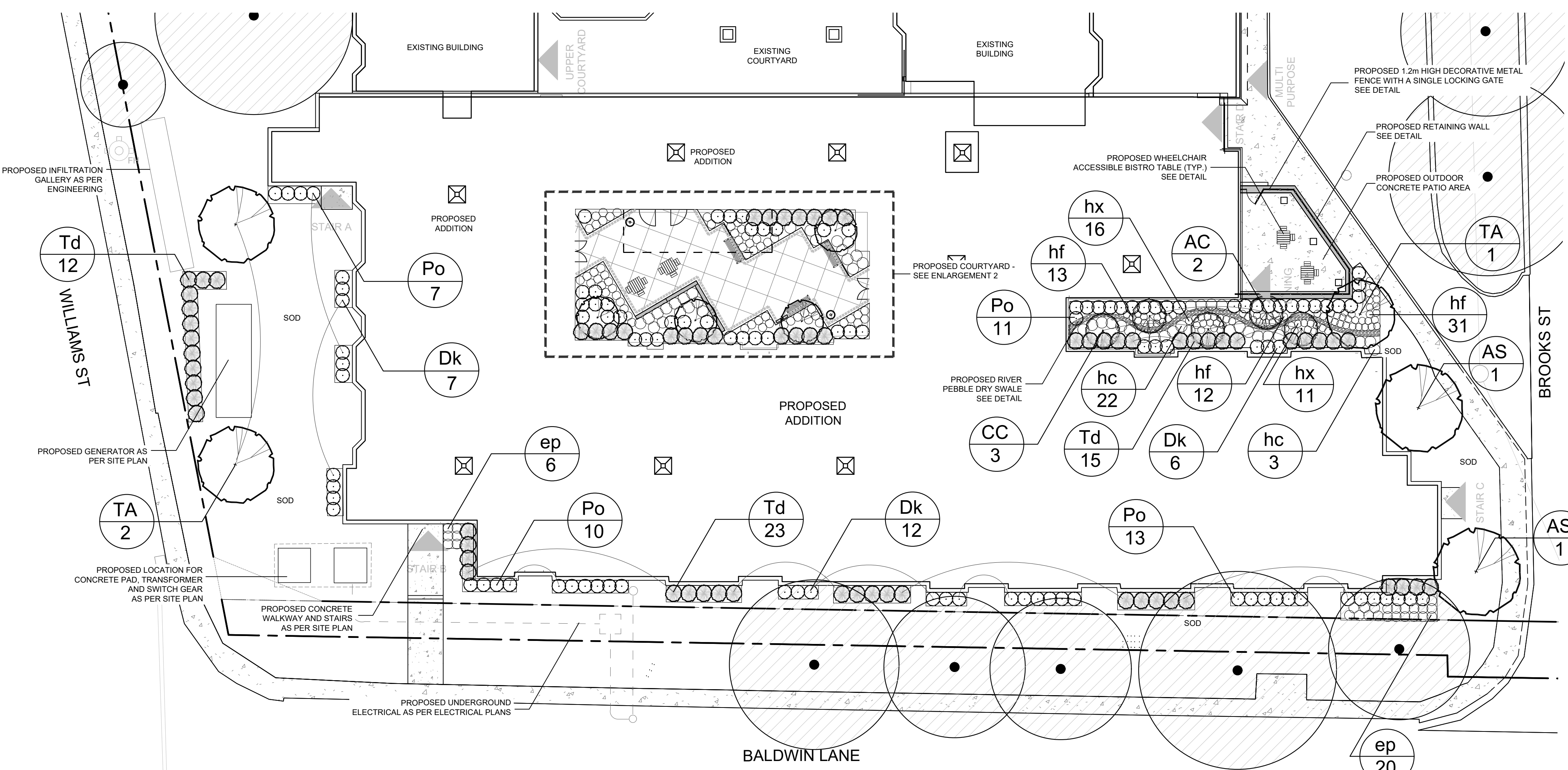
1 OVERALL SITE LAYOUT
SCALE 1:1000



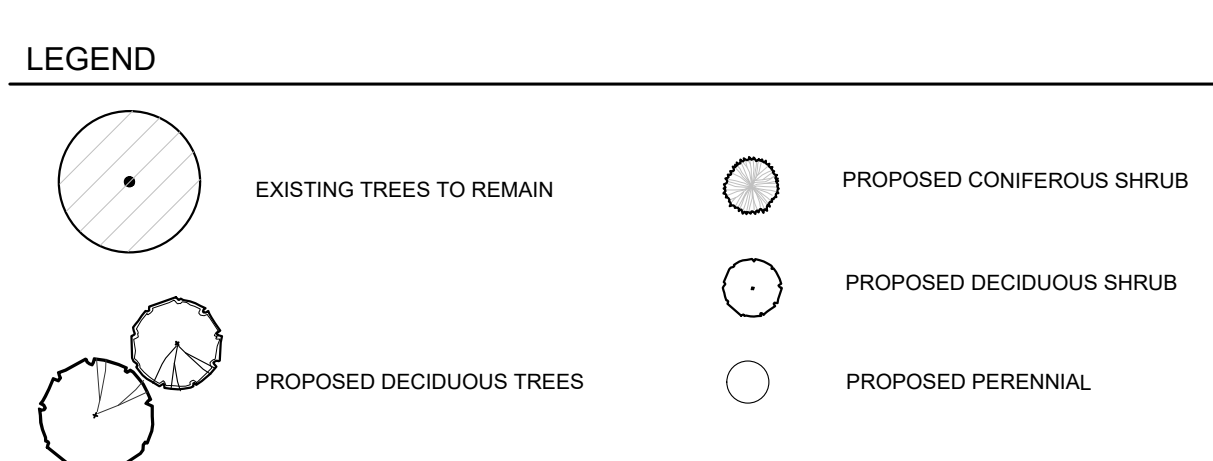
1 DECIDUOUS TREE PLANTING DETAIL
NTS



2 SHRUB PLANTING DETAIL
NTS

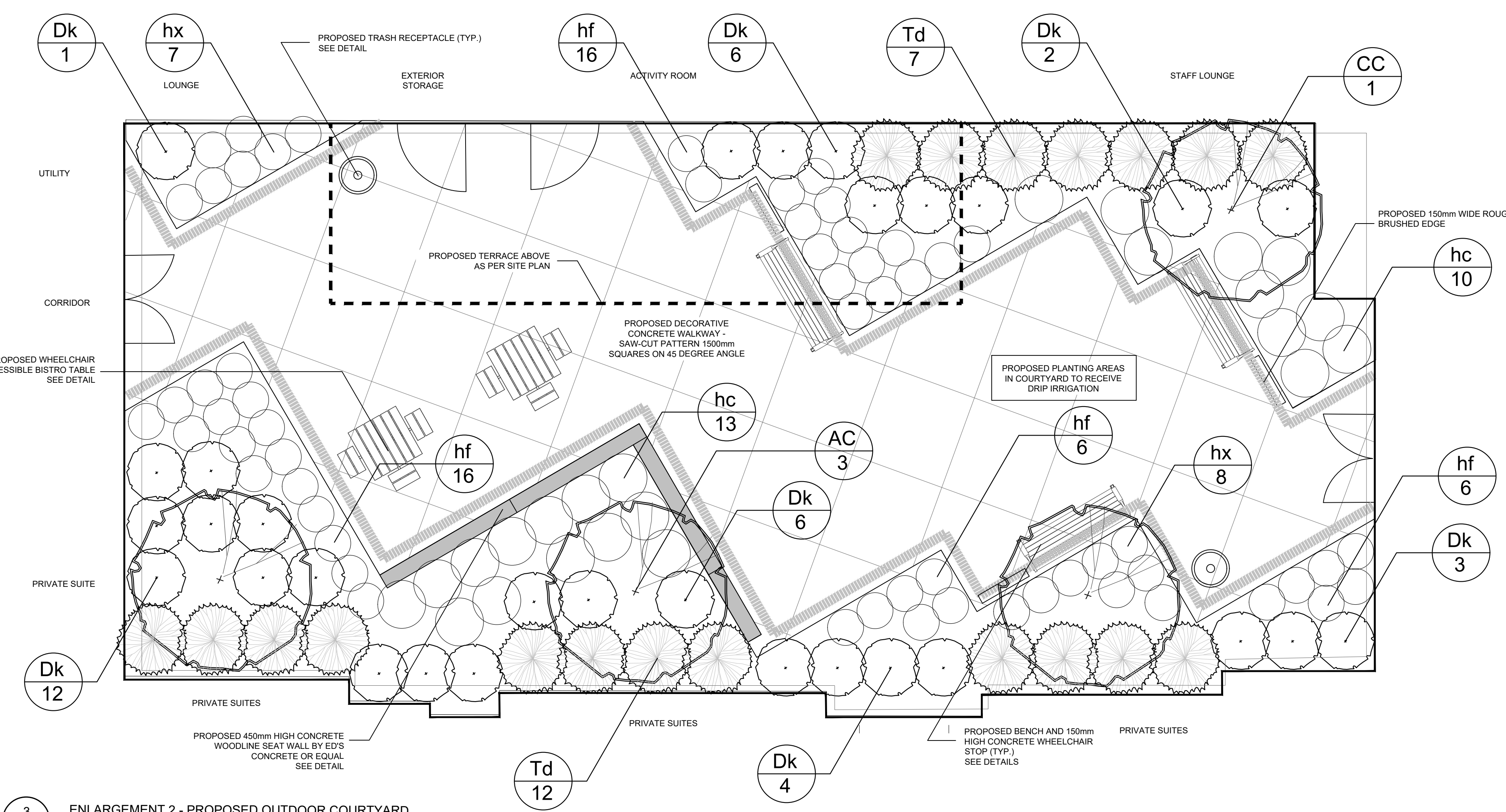


2 ENLARGEMENT 1 - ADDITION AREA

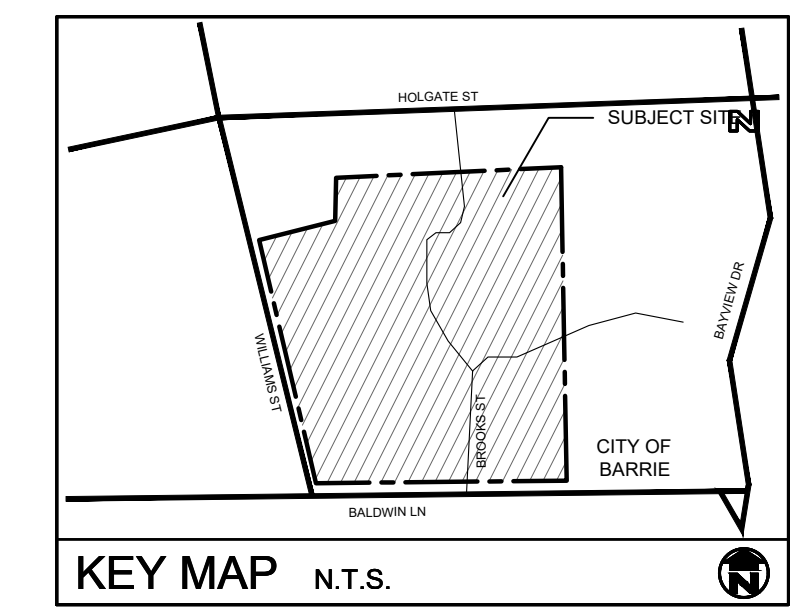


PLANT MATERIAL LIST

KEY	QUANT.	BOTANICAL NAME	COMMON NAME	SIZE	COND.
AC	5	Amygdalchier canadensis (tree form)	Servicberry (tree form)	70mm cal.	W.B.
AS	2	Acer saccharum	Sugar Maple	70mm cal.	W.B.
CC	4	Cercis canadensis (tree form)	Eastern Redbud (tree form)	70mm cal.	W.B.
TA	3	Tilia americana 'Redmond'	Redmond Linden	70mm cal.	W.B.
Dk	59	Dierivilla ionicea 'Kodiak Orange'	Kodiak Orange Bush Honeyuckle	60cm, 3 gal.	Pot
Po	41	Physocarpus opulifolius 'Dart's Gold'	Dart's Gold Ninebark	60cm, 3 gal.	Pot
Td	69	Taxus x media 'Densiformis'	Dense Yew	60cm, 3 gal.	Pot
ep	26	Echinacea purpurea 'Merlot'	Merlot Coneflower	1 gal.	Pot
hc	48	Hosta 'Catherine'	Catherine Hosta	1 gal.	Pot
hf	100	Hosta 'First Frost'	First Frost Hosta	1 gal.	Pot
hx	42	Heuchera x 'Guacamole'	Guacamole Coral Bells	1 gal.	Pot



3 ENLARGEMENT 2 - PROPOSED OUTDOOR COURTYARD



GENERAL NOTES

1. ALL WORKMANSHIP WILL BE TO THE STANDARDS OF LANDSCAPE ONTARIO.
2. ALL PLANT MATERIAL TO BE NO. 1 GRADE NURSERY GROWN IN ACCORDANCE WITH THE CANADIAN STANDARDS FOR NURSERY STOCK, 6TH EDITION, 1998, BY THE CANADIAN NURSERY TRADES ASSOCIATION.
3. BACKFILL WILL CONSIST OF SOIL NATIVE TO THE SITE OR GENERAL SOIL TYPE CLASS NATIVE TO THE SITE. TOPSOIL TO BE TESTED FOR NUTRIENT VALUE, AND AMENDED FOR OPTIMAL GROWTH AS PER THE RECOMMENDATIONS OF THE SOIL TEST.
4. CONTRACTOR SHALL MAINTAIN ALL LANDSCAPE AREAS UNTIL OWNERS ACCEPTANCE OF PROJECT.
5. CONTRACTOR TO LOCATE ALL UNDERGROUND UTILITIES.
6. PLANTING MAY BE ADJUSTED TO SUIT LOCATIONS OF SITE UTILITY STRUCTURES/SERVICES.
7. ALL MATERIALS MUST BE APPROVED BY LANDSCAPE ARCHITECT PRIOR TO INSTALLATION.
8. SPREAD MULCH TO A MINIMUM OF 100mm COMPACTED DEPTH ON ALL TREE PITS AND PLANTING BEDS.
9. CHECK AND VERIFY ALL DIMENSIONS AND QUANTITIES PRIOR TO COMMENCEMENT OF WORK. ANY DISCREPANCIES ARE TO BE REPORTED IN WRITING TO THE LANDSCAPE ARCHITECT. QUANTITIES NOTED WITHIN THE PLAN SUPERSEDE THOSE IN THE PLANT LIST. ANY SUBSTITUTIONS SHALL BE APPROVED BY THE LANDSCAPE ARCHITECT.
10. SOD AS MARKED WITH NURSERY SOD ON A MINIMUM OF 100mm OF CLEAN TOPSOIL. FINE GRADE AND SOD ALL BOULEVARD AREAS TO MUNICIPAL SPECIFICATIONS AND REPAIR DAMAGE TO ADJACENT PROPERTIES, AS REQUIRED.
11. FINAL INSPECTION AND ACCEPTANCE OF PLANTING WORK SHALL CONCLUDE WITH THE FINAL INSPECTION AND ACCEPTANCE OF ALL WORK INCLUDED IN THE CONTRACT.
12. ALL SEEDED SLOPES 3:1 AND GREATER TO RECEIVE EROSION CONTROL MATTING. PIN SOD ON ALL SLOPES OF 3:1 OR GREATER.
13. SUBMIT A WRITTEN GUARANTEE TO THE EFFECT THAT ALL PLANTS ACCEPTED DURING THE PERIOD OF JANUARY 1st TO JULY 15th SHALL BE GUARANTEED UNTIL JULY 15th THE FOLLOWING YEAR. PLANTS ACCEPTED DURING THE PERIOD OF JULY 15th TO DECEMBER 31st SHALL BE GUARANTEED FOR ONE YEAR FROM THE DATE OF ACCEPTANCE. THE GUARANTEE PERIODS LISTED ABOVE SHALL APPLY TO ALL "NURSERY GROWN PLANTS".
14. AT THE TIME OF FINAL INSPECTION ALL PLANTS SHALL BE IN A HEALTHY, VIGOROUS GROWING CONDITION, PLANTED IN FULL ACCORDANCE WITH DRAWINGS AND CONDITIONS.
15. EXISTING CONDITIONS PLAN AS PER SALTER PILON ARCHITECTURE INC.
16. SITE PLAN INFORMATION AS PER PEARSON ENGINEERING ARCHITECTURE INC.
17. ENGINEERING AS PER PEARSON ENGINEERING, AND IS PROVIDED FOR INFORMATION ONLY.
18. SITE LIGHTING BY OTHERS.



REVISIONS

no.	date	description	by
1.	Apr. 21, 23	Issued for costing	CMH
2.	Jul. 12, 23	Issued for approval	CMH
3.	May. 17, 24	Issued for Ministry Approval	EH
4.	May. 23, 24	Issued for approval	EH
5.	Jul. 23, 24	Issued for Site Plan Amendment	EH

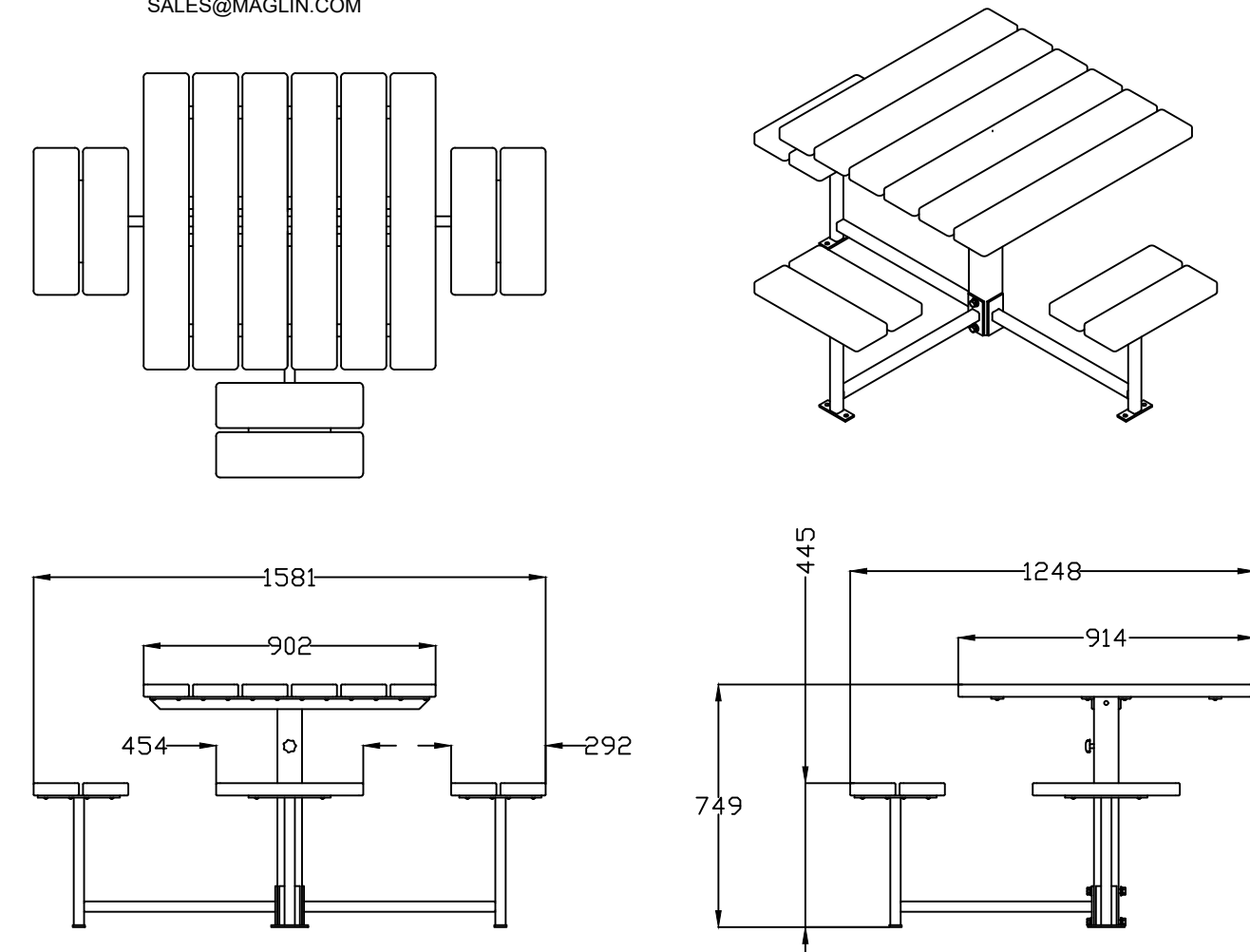
IOOF EXPANSION
10 Brooks Street
City of Barrie

Landscape Plan



TABLE BY MAGLIN (OR APPROVED EQUAL)
T 1-800-716-5506
F 1-877-260-0393
WWW.MAGLIN.COM
SALES@MAGLIN.COM

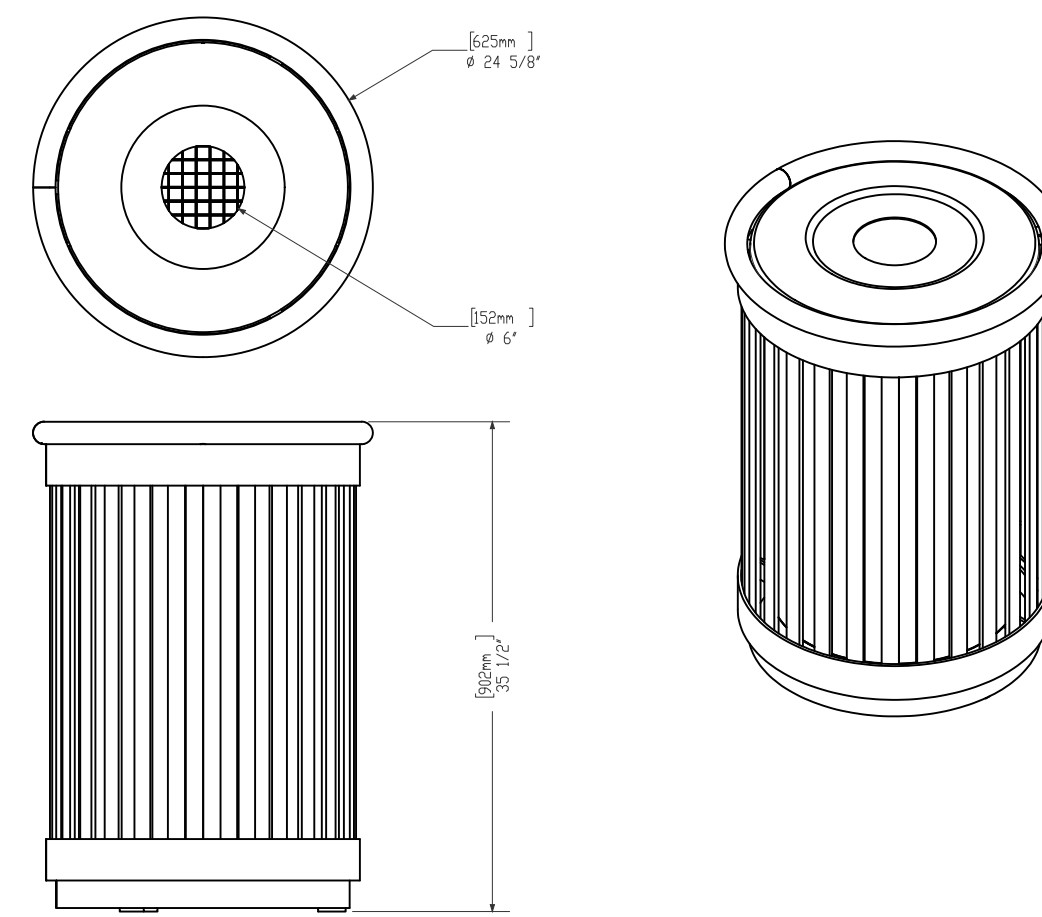
SPECIFICATIONS:
MODEL: MTB-0400
FINISH: HPLC CEDAR, GUNMETAL POWDER COAT STEEL
OPTIONS: WHEELCHAIR ACCESSIBLE
INSTALLATION: SURFACE MOUNT



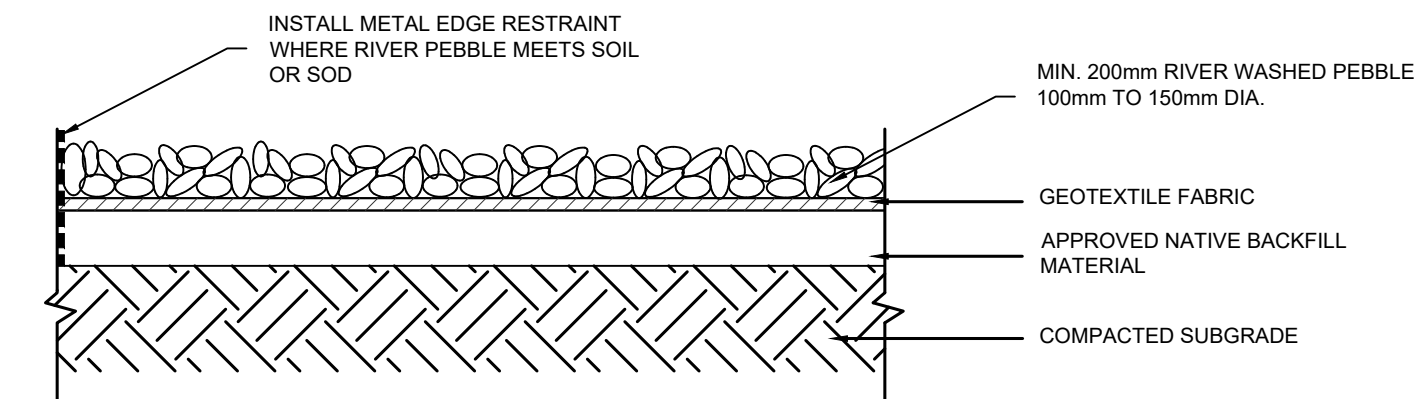
1 BISTRO SEATING DETAIL
NTS

TRASH RECEPTACLE BY MAGLIN (OR APPROVED EQUAL)
T 1-800-716-5506
F 1-877-260-0393
WWW.MAGLIN.COM
SALES@MAGLIN.COM

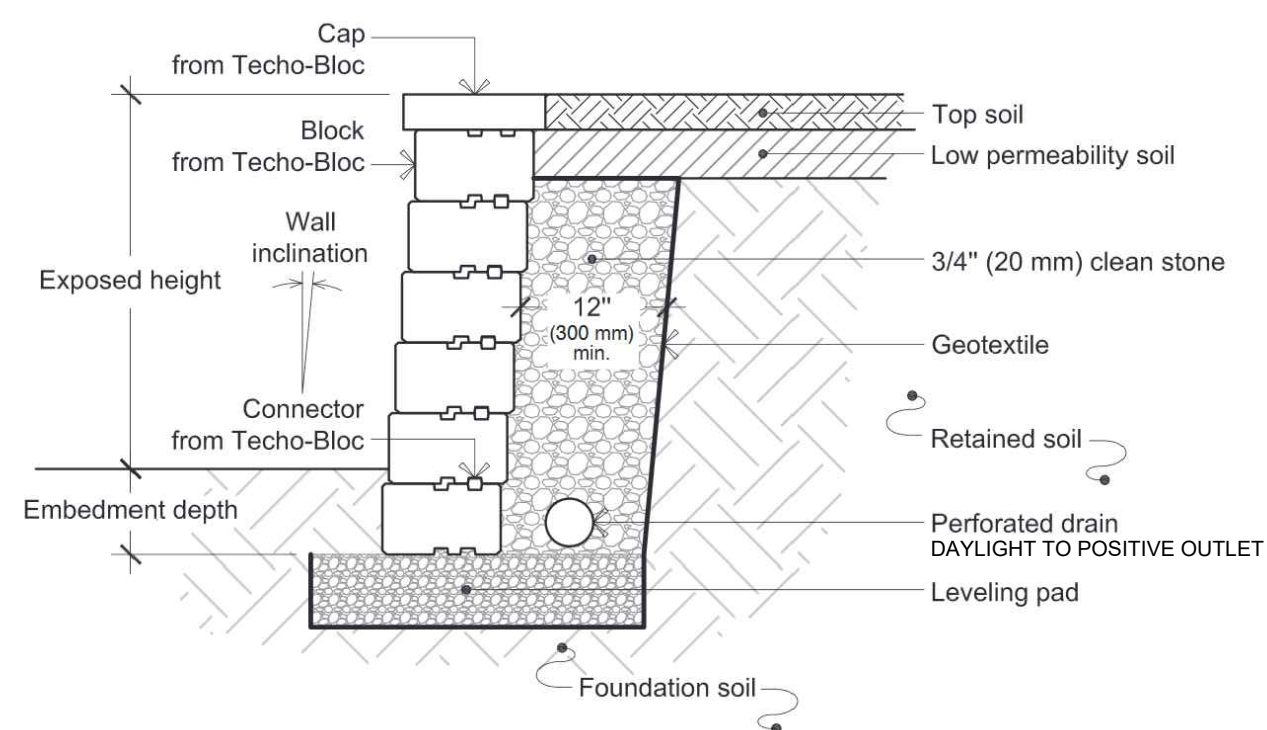
SPECIFICATIONS:
MODEL: MTR-0550-0004
FINISH: TITANIUM POWDER COAT
OPTIONS: NONE
INSTALLATION: SURFACE MOUNT AS PER MANUFACTURER'S SPECIFICATIONS



2 TRASH RECEPTACLE DETAIL
NTS



3 RIVER PEBBLE MULCH DETAIL
NTS



NOTE:
STRUCTURAL DESIGN OF WALL BY OTHERS
FOUNDATION BEARING IN NATIVE SOIL TO BE
CONFIRMED BY STRUCTURAL ENGINEER.

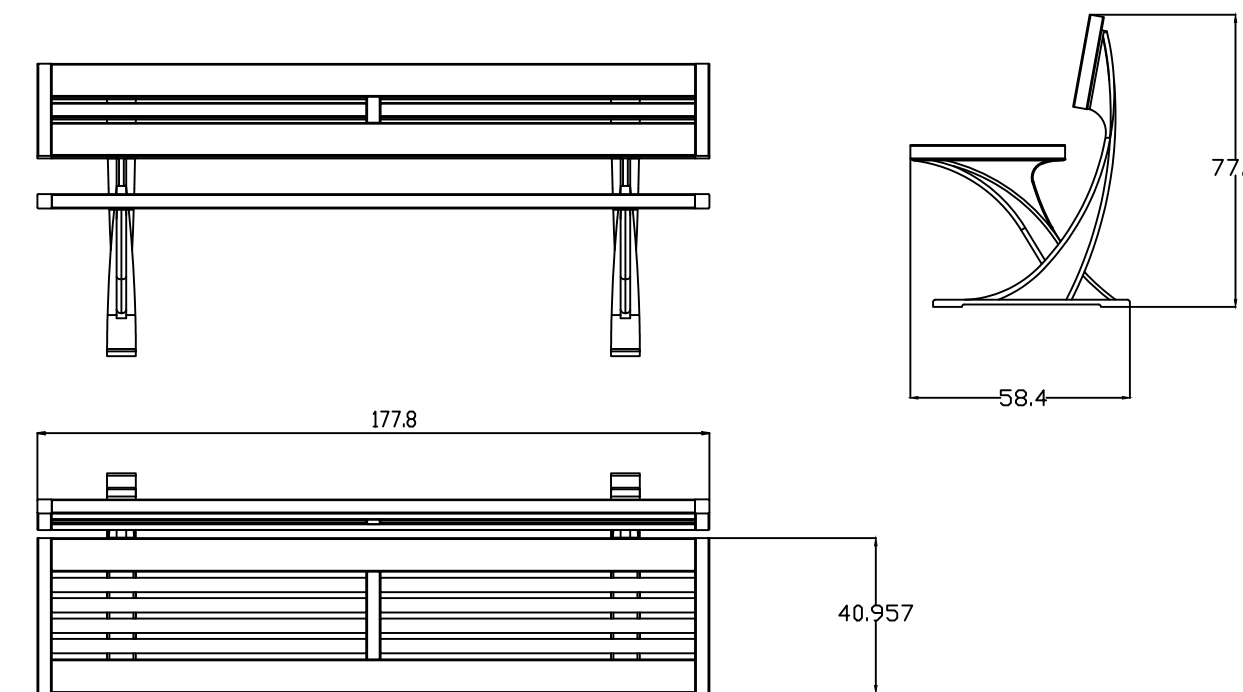
WALL BY TECO-BLOC (OR APPROVED EQUAL)
T 1-877-823-4625
F 1-455-656-1983
WWW.TECO-BLOC.COM
INFO@TECO-BLOC.COM

SPECIFICATIONS:
MODEL: RAFFINATO SMOOTH 90mm
FINISH: GREYED NICOLE WALL UNIT AND COPING UNIT
INSTALLATION: AS PER MANUFACTURER'S SPECIFICATIONS

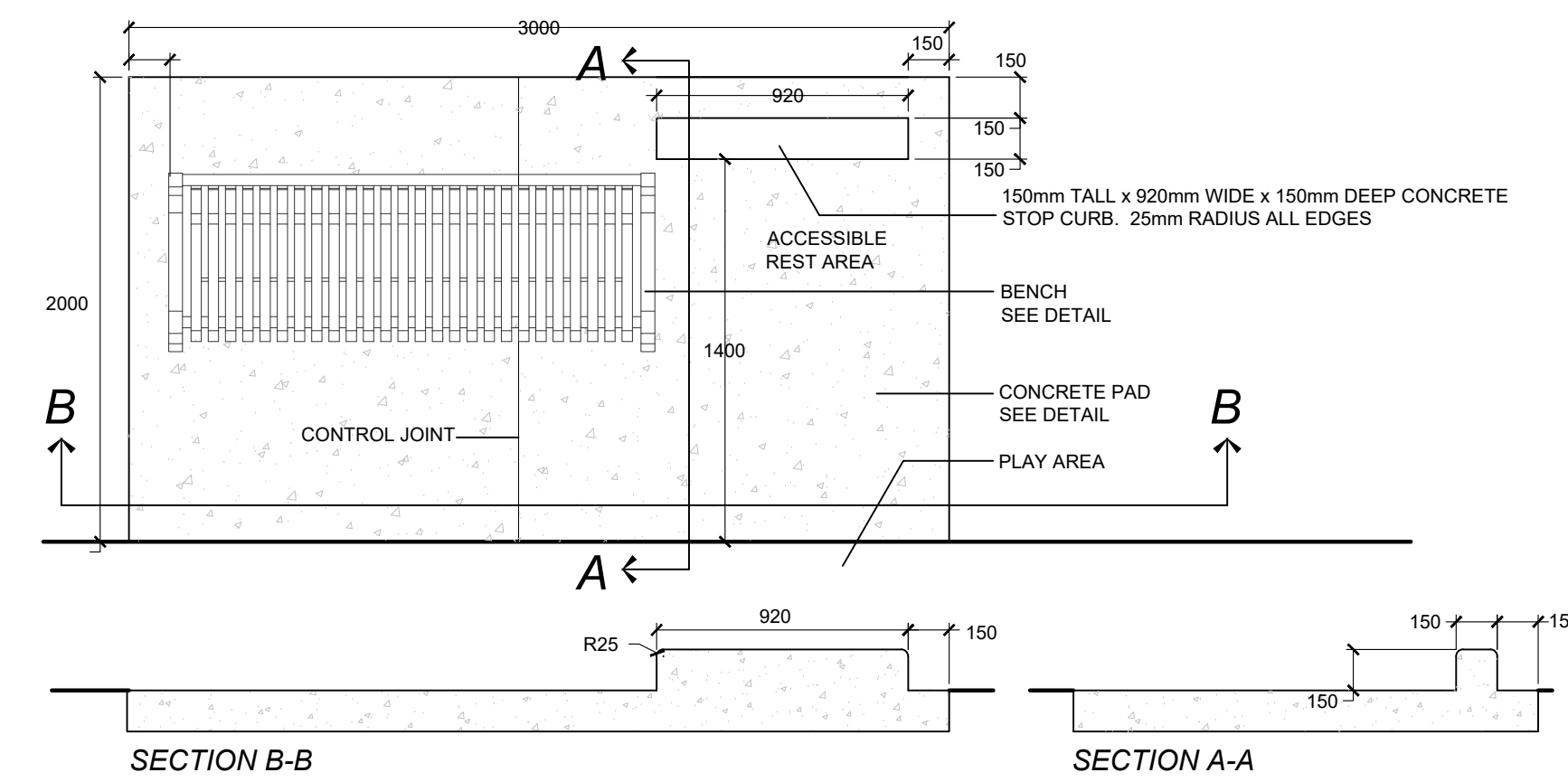
4 TYPICAL PRECAST RETAINING WALL DETAIL
NTS

BENCH BY MAGLIN (OR APPROVED EQUAL)
T 1-800-716-5506
F 1-877-260-0393
WWW.MAGLIN.COM
SALES@MAGLIN.COM

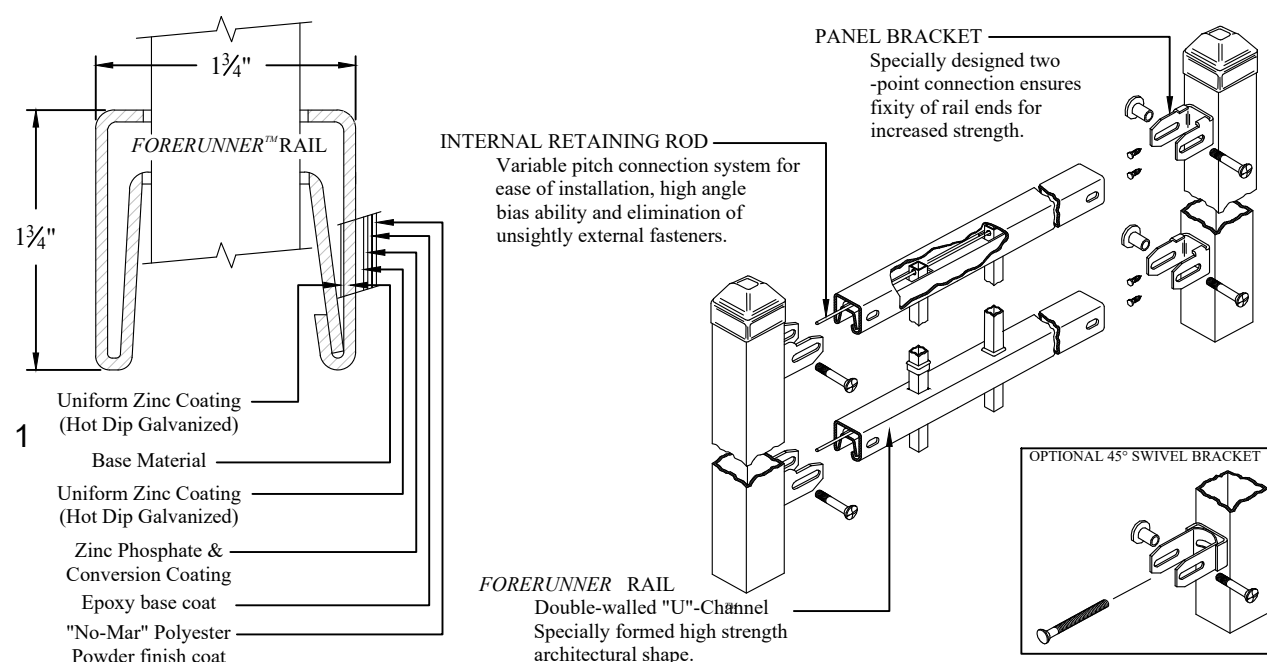
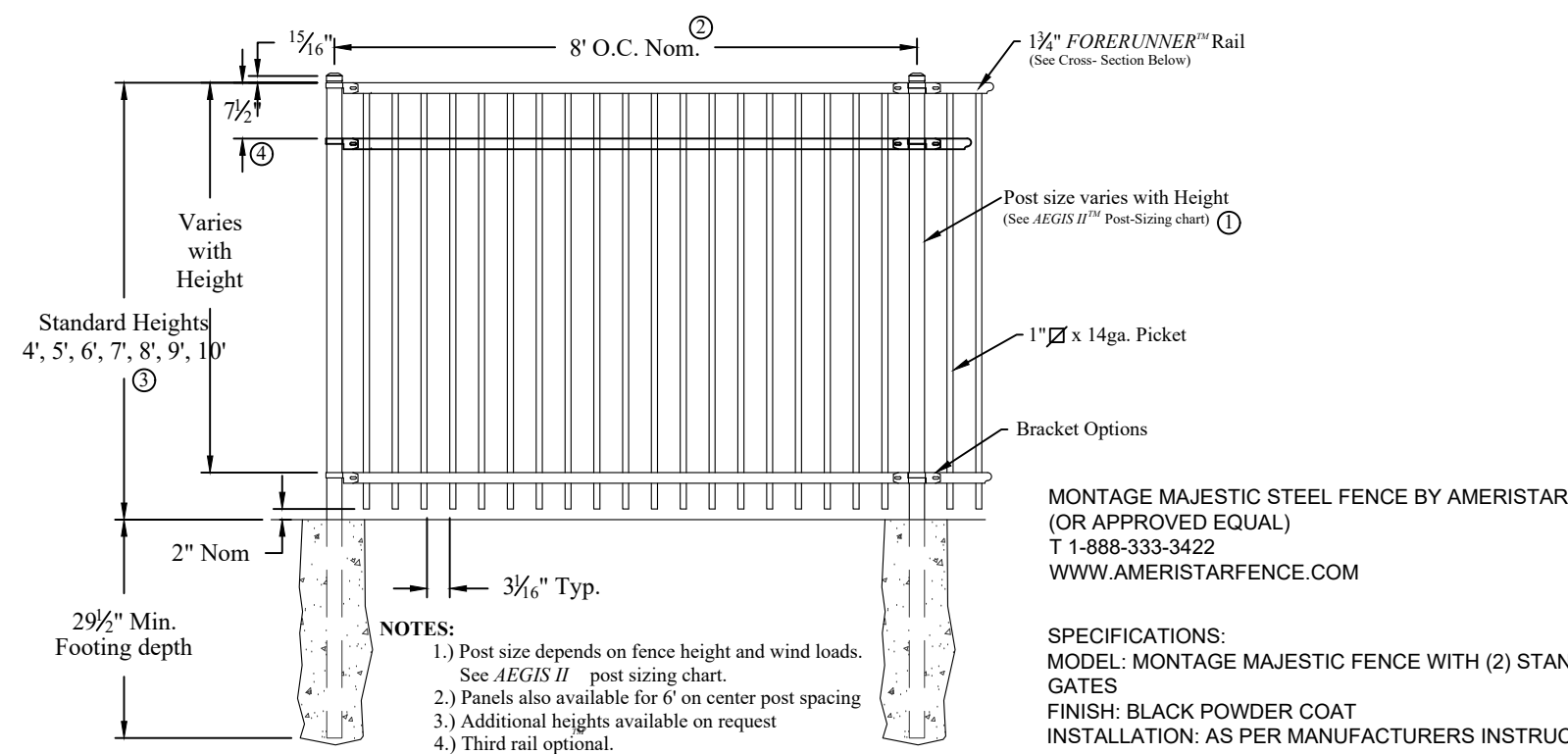
SPECIFICATIONS:
MODEL: MBE-1200-00018
FINISH: BLACK POWDERCOAT LEGS, SANDSTONE HDPC SEAT
OPTIONS: NONE
INSTALLATION: SURFACE MOUNT AS PER MANUFACTURER'S SPECIFICATIONS



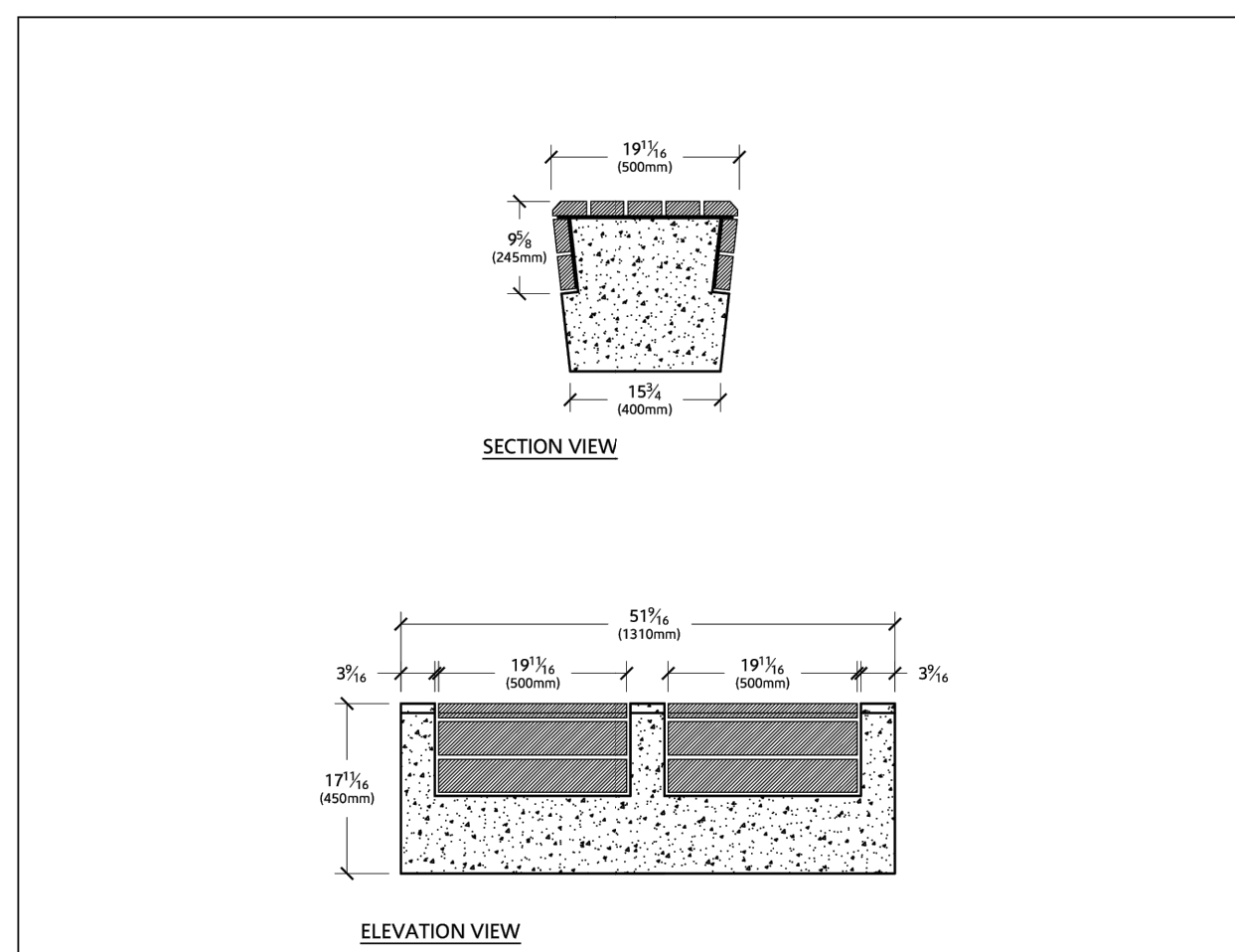
5 BENCH DETAIL
NTS



6 ACCESSIBLE CURB STOP DETAIL
NTS



7 1.2m HIGH DECORATIVE STEEL FENCE DETAIL
NTS



BENCH BY ED'S CONCRETE (OR APPROVED EQUAL)
T 1-877-260-6500
WWW.EDSCONCRETE.COM
INFO@EDSCONCRETE.COM

SPECIFICATIONS:
MODEL: WOODLINE WL-07 AND WL-08
FINISH: IPE WOOD INLAY SEAT
INSTALLATION: SURFACE MOUNT AS PER MANUFACTURER'S SPECIFICATIONS

NOTES:
1. CONTRACTOR TO REFER TO ARCHITECTURAL SPECIFICATIONS FOR COLOUR, FINISH AND VALUE ADDED FEATURES.
2. SUBMIT COLOUR AND FINISH SAMPLES FOR APPROVAL.
3. WEIGHT OF WL-08 BENCH - 1600 lb.

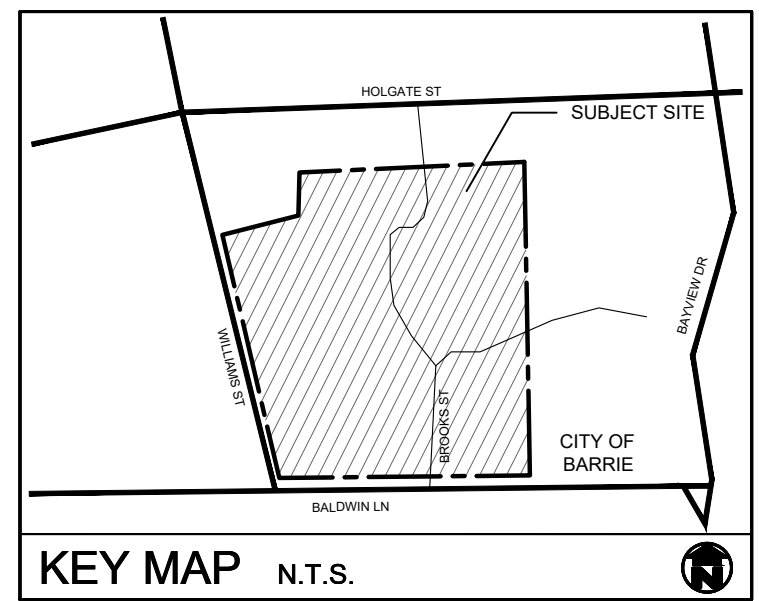
EDS CONCRETE PRODUCTS
1264 198 STREET
STANTON, ONTARIO
M2Z 0A1

URBASTYLE SEAT

WOODLINE WL-07

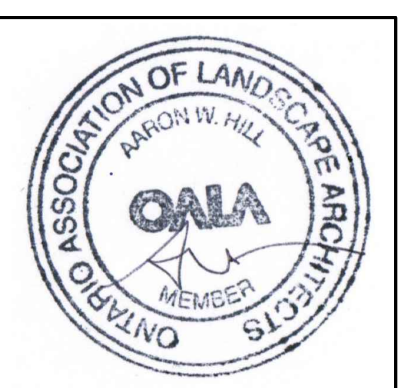
1-877-260-6500
www.edconcrete.com
info@edconcrete.com

8 CONCRETE BENCH DETAIL
NTS



KEY MAP N.T.S.

IOOF SENIORS HOMES INC.



no.	date	description	by
1.	Apr 21 23	Issued for costing	CMH
2.	Jul 12 23	Issued for approval	CMH
3.	May 17 24	Issued for Ministry Approval	EH
4.	May 23 24	Issued for approval	EH
5.	Jul 23 24	Issued for Site Plan Amendment	EH

IOOF EXPANSION
10 Brooks Street
City of Barrie

Landscape Details



PROJECT NO.: 2022-59 DRAWN BY: CMH
SCALE: AS NOTED DESIGNED BY: CMH
SHEET: APPROVED BY: AWH
LS3 PLOT DATE: JUL 23, 2024