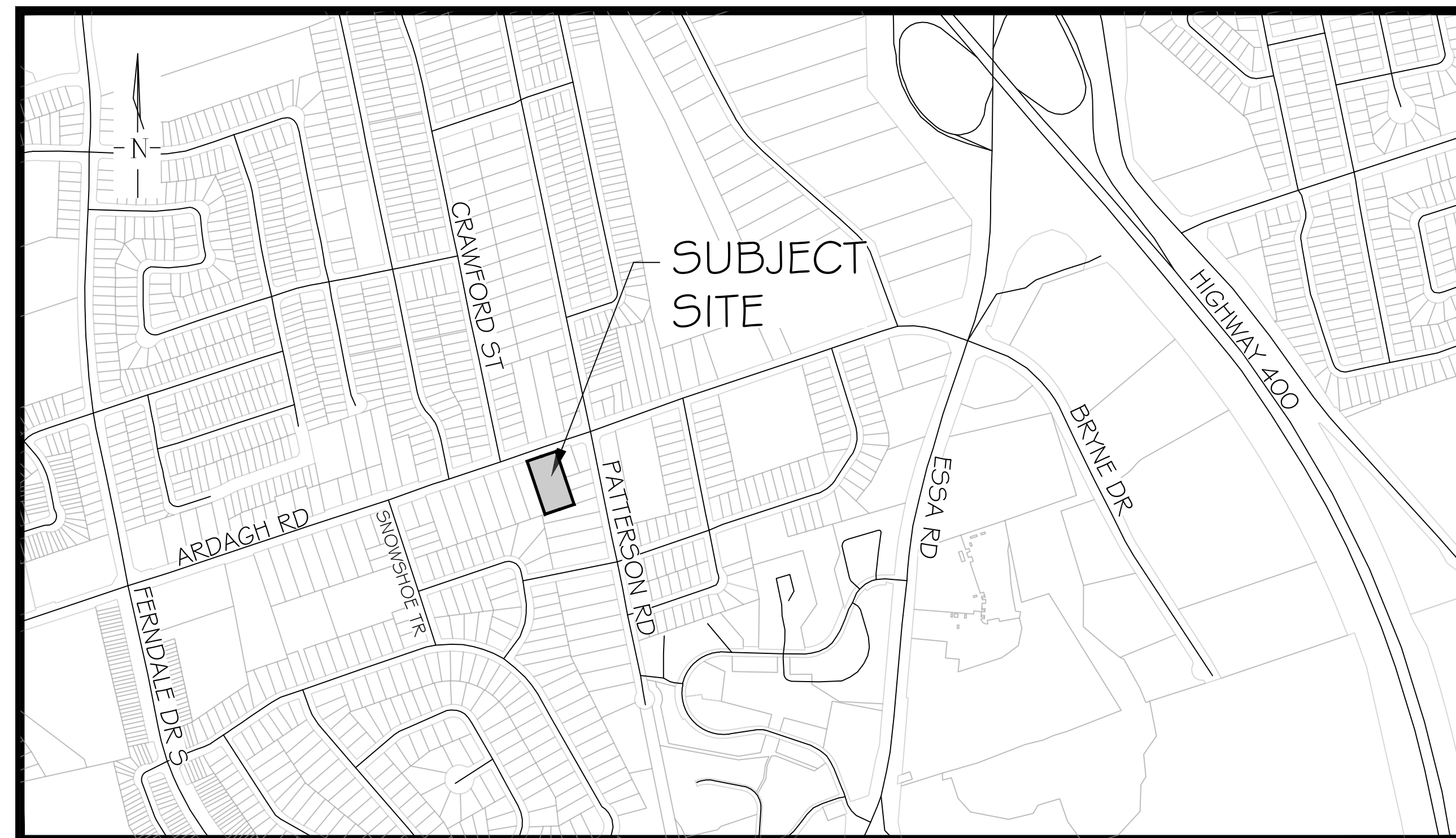


TOWNHOUSE DEVELOPMENT 127 & 131 ARDAGH ROAD BARRIE, ON

MUNICIPAL FILE:

LANDMARK ENVIRONMENTAL GROUP LTD.

PROJECT NO. LA 876-24



KEY PLAN N.T.S.

DRAWING LIST:

- EX-1: EXISTING CONDITIONS
- TP-1: TREE PRESERVATION PLAN 1
- TP-2: TREE PRESERVATION PLAN 2
- L-1: LANDSCAPE PLAN
- LD-1: DETAILS 1
- LD-2: DETAILS 2

CLIENT:

FITCHAL INCORPORATED

MUNICIPALITY:



CITY OF BARRIE
70 COLLIER STREET, P.O. BOX 400,
BARRIE, ON
L4M 4T5

LANDSCAPE ARCHITECT:



LANDSCAPE ARCHITECTS
& CONSULTING ARBORISTS

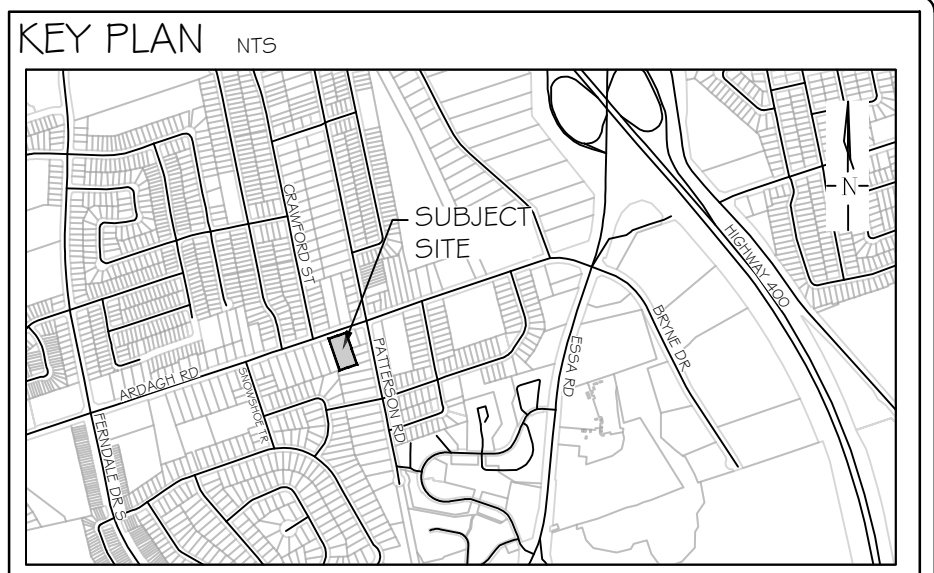
OFFICE: 705-796-1122

info@LEGroupLtd.com
www.LEGroupLtd.com



Key	Latin Name	Common Name	Tree DIA (cm dbh)	Comments	Assessment	Canopy Radius (m)	Remove/Preserve
1	<i>Acer negundo</i>	Manitoba maple	71	healthy crown, open grown	3 Fair	9	Remove
2	<i>Prunus serotina</i>	Black Cherry	39, 40, 43	multi leaders below dbh, some dieback, codominant	4 Good	10	Remove
3	<i>Juglans nigra</i>	Black Walnut	12	imbedded in fence	2 Marginal	2.5	Remove
4	<i>Malus spp</i>	Apple spp.	10, 10	12 leaders,	2 Marginal	4.6	Remove
5	<i>Acer negundo</i>	Manitoba Maple	14	multiple leaders	2 Marginal	4.2	Remove
6	<i>Quercus rubra</i>	Red Oak	71	excellent	5 Excellent	9.4	Remove
7	<i>Malus spp</i>	Apple spp.	14, 13, 12	multiple leaders		4.2	Remove
8	<i>Fraxinus americana</i>	White Ash	14	grape vine	4 Good	4	Remove
9	<i>Juglans nigra</i>	Black Walnut	68	excellent	5 Excellent	8.5	Remove
10	<i>Acer negundo</i>	Manitoba Maple	99	multiple leaders , multiple dead leaders	2 Marginal	8.5	Remove
11	<i>Populus deltoides</i>	Eastern Cottonwood	70		4 Good	10.5	Remove
12	<i>Ulmus americana</i>	White Elm	27	surpressed	3 Fair	5	Remove
13	<i>Populus deltoides</i>	Eastern Cottonwood	96		4 Good	9	Remove
14	<i>Acer rubrum</i>	Red Maple	85	forked	3 Fair	8	Remove
16	<i>Pinus sylvestris</i>	Scots Pine	26		3 Fair	2.6	Remove
17	<i>Pinus sylvestris</i>	Scots Pine	26		3 Fair	2	Remove
18	<i>Pinus sylvestris</i>	Scots Pine	32			3.1	Remove
19	<i>Pinus sylvestris</i>	Scots Pine	27		3 Fair	2.7	Remove
20	<i>Pinus resinosa</i>	Red Pine	20			2	Remove
21	<i>Pinus resinosa</i>	Red Pine	24		3 Fair	2.6	Remove
22	<i>Pinus resinosa</i>	Red Pine	21			1.5	Remove
23	<i>Pinus resinosa</i>	Red Pine	28		3 Fair	1.5	Remove
24	<i>Pinus resinosa</i>	Red Pine	34		3 Fair	3.2	Remove
25	<i>Pinus resinosa</i>	Red Pine	29		3 Fair	2.1	Remove
26	<i>Pinus resinosa</i>	Red Pine	29		3 Fair	1.8	Remove
27	<i>Pinus resinosa</i>	Red Pine	28		3 Fair	2.1	Remove
28	<i>Pinus resinosa</i>	Red Pine	33		3 Fair	1.9	Remove
29	<i>Pinus resinosa</i>	Red Pine	26		3 Fair	3.6	Remove
30	<i>Pinus resinosa</i>	Red Pine	25		3 Fair	2.7	Remove
31	<i>Pinus resinosa</i>	Rec Pine	32		3 Fair	2.1	Remove
32	<i>Pinus sylvestris</i>	Scots Pine	27		3 Fair	5	Remove
33	<i>Pinus resinosa</i>	Red Pine	28		3 Fair	2.9	Remove
34	<i>Pinus sylvestris</i>	Scots Pine	10		3 Fair	1.7	Remove
35	<i>Prunus serotina</i>	Black Cherry	13			3.6	Remove
36	<i>Pinus sylvestris</i>	Scots Pine	31		2 Marginal	3.1	Remove
37	<i>Prunus serotina</i>	Black Cherry	14	base of tree in adjacent parcel	3 Fair	2.4	Preserve
39	<i>Thuja occidentalis</i>	Eastern White Cedar	53		3 Fair	3.7	Remove
40	<i>Picea pungens</i>	Colorado Spruce	68		5 Excellent	5.8	Remove
41	<i>Pinus sylvestris</i>	Scots Pine	21		1 Poor	2.2	Remove
42	<i>Pinus sylvestris</i>	Scots Pine	26		2 Marginal	3	Remove
43	<i>Pinus sylvestris</i>	Scots Pine	17, 26		2 Marginal	2.5	Remove
44	<i>Juglans cinerea</i>	Butternut	12, 16	buckthorn growing beside	2 Fair	4.2	Remove
a	<i>Acer rubrum</i>	Red Maple	15	multiple leaders	3 Fair	2.7	Preserve
b	<i>Sorbus decora</i>	Mountain Ash	10		4 Good	2.5	Preserve
c	<i>Quercus rubra</i>	Red Oak	22		5 Excellent	2	Preserve
d	<i>Acer rubrum</i>	Red Maple	13		4 Good	2.5	Preserve
e	<i>Acer rubrum</i>	Red Maple	10, 10	multiple leaders	3 Fair	3.5	Preserve
f	<i>Acer saccharinum</i>	Sugar Maple	22, 20, 14, 18	cluster	4 Good	6	Preserve
g	<i>Acer saccharinum</i>	Sugar Maple	11		4 Good	3	Preserve
h	<i>Acer saccharinum</i>	Sugar Maple	16		4 Good	4.5	Preserve
i	<i>Quercus rubra</i>	Red Oak	45		4 Good	6	Preserve
j	<i>Acer saccharinum</i>	Sugar Maple	85		4 Good	8.5	Preserve
k	<i>Betula papyrifera</i>	White Birch	55		4 Good	6	Preserve
l	<i>Populus deltoides</i>	Eastern Cottonwood	52, 84, 25	multiple leaders		10.4	Preserve

Key	Latin Name	Common Name	Tree DIA (cm dbh)	Comments	Assessment	Canopy Radius (m)	Remove/Preserve
1TL	<i>Thuja occidentalis</i>	Eastern White Cedar	10	-20 healthy crown, open grown	3 Fair	as outlined	Remove



GENERAL NOTES

The Client and its contractors are responsible for all utility locates and confirming all setbacks, elevations, grades, etc. prior to installation of the constructed works. The Contractor is to report any discrepancies in writing to the Landscape Architect prior to proceeding with the works to determine the impact and suitability of the proposed works. The Landscape Architect will not be responsible for any unapproved adjustments on site.

Construction of the works must conform to Authority requirements and applicable codes where they have jurisdiction. All specifications and drawings are instruments of service and are the property and ownership of the Landmark Environmental Group Ltd. As such, the drawings shall not be modified or reproduced without the expressed written consent of Landmark Environmental Group Ltd. or they will be considered void. The said drawings are for Site Plan approval only and may require additional detailing prior to tender and construction.

The Landmark Environmental Group Ltd. is not liable for errors or omissions from the use of these drawings prior to approval, seal, signature and date, and will be considered void. It is advised that the Contractor contact the Landscape Architect prior to commencement of the construction works to ensure that the Contractor has the latest approved drawings. The Landmark Environmental Group Ltd. is not responsible for the accuracy of the base drawing information (eg Survey, Architectural, Engineering, etc.). If there are any discrepancies, the Contractor will refer to the appropriate base drawing information and report discrepancies on the Landscape Drawings to the Landscape Architect.

© Copyright Landmark Environmental Group Ltd.

- LEGEND**
- TREE LOCATION WITH CANOPY
 - OFFSITE TREE LOCATION WITH CANOPY
 - DELINEATED SECTIONS & GROUPINGS
 - BOUNDARY TREE
 - PROPERTY BOUNDARY

NO	DATE	BY	REVISIONS
2	JULY 11-24	S.K	DEVELOPED LANDSCAPE CONCEPT PLAN FOR REVIEW
1	11-06-24	M.K	ADJUSTED PROPERTY LINE ON LEG PACKAGE

STAMP		APPROVAL	
-------	--	----------	--



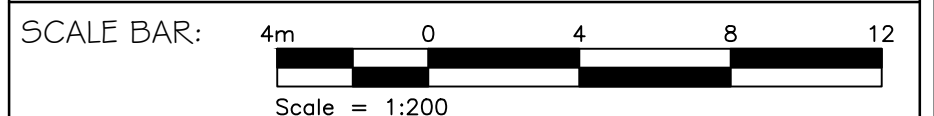
2023 AERIAL IMAGERY SOURCED FROM SIMCOE COUNTY GIS

LANDMARK ENVIRONMENTAL GROUP LTD.
 LANDSCAPE ARCHITECTS & CONSULTING ARBORISTS
 OFFICE: 705-796-1122
 info@LEGGroupLtd.com
 www.LEGroupLtd.com

CLIENT: FITCHAL INCORPORATED

PROJECT: TOWNHOUSE DEVELOPMENT
 127 & 131 ARDAGH ROAD

DRAWING: EXISTING CONDITIONS

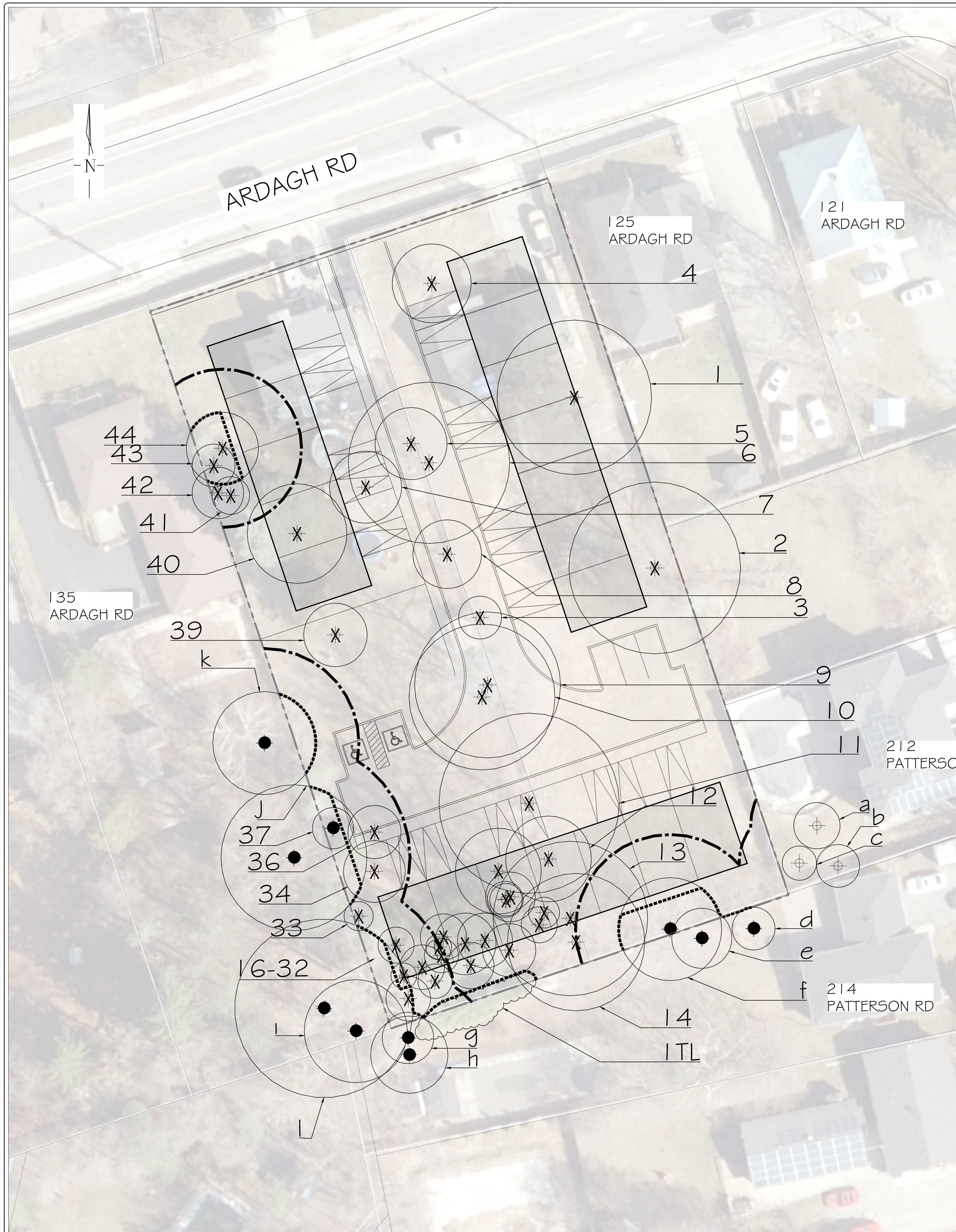


PROJECT NO.: LA 876-24
 SCALE: 1:250

MUNICIPAL FILE NO.:
 DATE: APRIL 18, 2024

DRAWN BY: M.K, S.K
 CHECKED BY: J.H
 DRAWING No.: EX-1

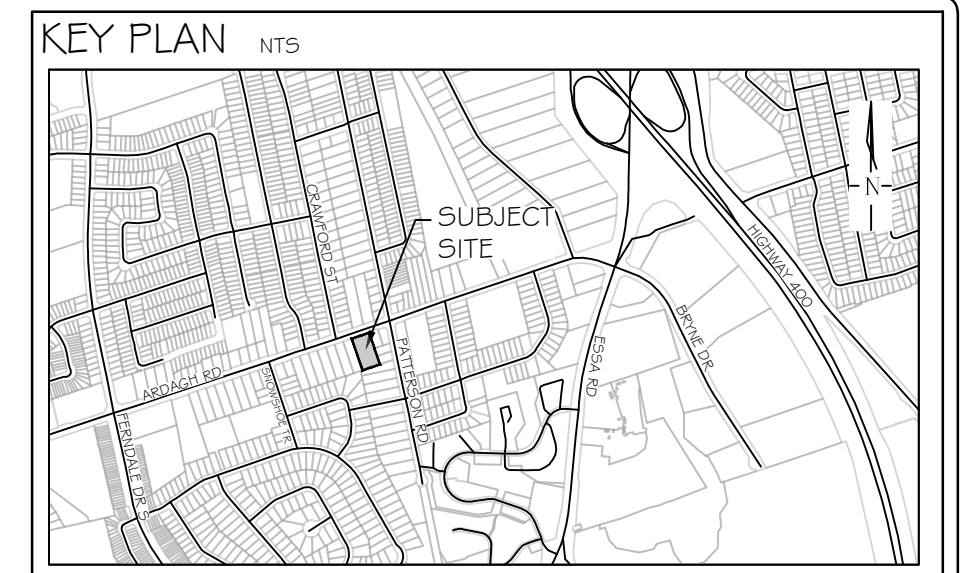
- NOTE:**
- VEGETATION REMOVAL OR ALTERATION IS TO OCCUR OUTSIDE THE BREEDING BIRD SEASON (APRIL 1 TO AUGUST 31) AND THE ACTIVE ROOSTING PERIOD FOR BATS (APRIL 1 TO SEPTEMBER 30). IF CLEARING IS TO OCCUR WITHIN THE BREEDING BIRD WINDOW, THE AFFECTED AREA MUST BE SCREENED BY A QUALIFIED ECOLOGIST 48 HOURS IN ADVANCE OF SCHEDULED CLEARING ACTIVITIES. IF NESTS ARE FOUND, WORK WITHIN THE AREA MUST CEASE UNTIL THE NEST HAS FLEDGED, AS PER THE FEDERAL MIGRATORY BIRDS CONVENTION ACT. SHOULD ANY CLEARING BE REQUIRED DURING THE ACTIVE ROOSTING PERIOD FOR BATS, CONTACT THE MINISTRY OF ENVIRONMENT, CONSERVATION AND PARKS FOR FURTHER DIRECTION (E.G. ACOUSTIC MONITORING, EXIT SURVEYS) TO ENSURE CONFORMITY WITH THE ENDANGERED SPECIES ACT.
 - VEGETATION CLEARING IS TO BE AVOIDED WITHIN THE 50m BUTTERNUT HABITAT ZONE UNDER THE ENDANGERED SPECIES ACT. THIS TREE IS TO BE EVALUATED BY A QUALIFIED BUTTERNUT HEALTH ASSESSOR.
 - PROPERTY LINES WERE ATTAINED BY BARRIE GIS, AND MAY NOT BE EXACTLY REPRESENTATIVE OF SURVEY STAKES



Key	Latin Name	Common Name	Tree DIA (cm dbh)	Comments	Assessment	Canopy Radius (m)	Remove/Preserve
1	<i>Acer negundo</i>	Manitoba Maple	71	healthy crown, open grown	3 Fair	9	Remove
2	<i>Prunus serotina</i>	Black Cherry	39, 40, 43	multi leaders below dbh, some diebck, codominant	4 Good	10	Remove
3	<i>Juglans nigra</i>	Black Walnut	12	imbedded in fence	2 Marginal	2.5	Remove
4	<i>Malus spp</i>	Apple spp.	10, 10	12 leaders,	2 Marginal	4.6	Remove
5	<i>Acer negundo</i>	Manitoba Maple	14	multiple leaders	2 Marginal	4.2	Remove
6	<i>Quercus rubra</i>	Red Oak	71	excellent	5 Excellent	9.4	Remove
7	<i>Malus spp</i>	Apple spp.	14, 13, 12	multiple leaders	4 Good	4.2	Remove
8	<i>Fraxinus americana</i>	White Ash	14	grape vine	4 Good	4	Remove
9	<i>Juglans nigra</i>	Black Walnut	68	excellent	5 Excellent	8.5	Remove
10	<i>Acer negundo</i>	Manitoba Maple	99	multiple leaders, multiple dead leaders	2 Marginal	8.5	Remove
11	<i>Populus deltoides</i>	Eastern Cottonwood	70		4 Good	10.5	Remove
12	<i>Ulmus americana</i>	White Elm	27	surpressed	3 Fair	5	Remove
13	<i>Populus deltoides</i>	Eastern Cottonwood	96		4 Good	9	Remove
14	<i>Acer rubrum</i>	Red Maple	85	forked	3 Fair	8	Remove
16	<i>Pinus sylvestris</i>	Scots Pine	26		3 Fair	2.6	Remove
17	<i>Pinus sylvestris</i>	Scots Pine	26		3 Fair	2	Remove
18	<i>Pinus sylvestris</i>	Scots Pine	32		3 Fair	3.1	Remove
19	<i>Pinus sylvestris</i>	Scots Pine	27		3 Fair	2.7	Remove
20	<i>Pinus resinosa</i>	Red Pine	20		3 Fair	2	Remove
21	<i>Pinus resinosa</i>	Red Pine	24		3 Fair	2.6	Remove
22	<i>Pinus resinosa</i>	Red Pine	21		3 Fair	1.5	Remove
23	<i>Pinus resinosa</i>	Red Pine	28		3 Fair	1.5	Remove
24	<i>Pinus resinosa</i>	Red Pine	34		3 Fair	3.2	Remove
25	<i>Pinus resinosa</i>	Red Pine	29		3 Fair	2.1	Remove
26	<i>Pinus resinosa</i>	Red Pine	29		3 Fair	1.8	Remove
27	<i>Pinus resinosa</i>	Red Pine	28		3 Fair	2.1	Remove
28	<i>Pinus resinosa</i>	Red Pine	33		3 Fair	1.9	Remove
29	<i>Pinus resinosa</i>	Red Pine	26		3 Fair	3.6	Remove
30	<i>Pinus resinosa</i>	Red Pine	25		3 Fair	2.7	Remove
31	<i>Pinus resinosa</i>	Rec Pine	32		3 Fair	2.1	Remove
32	<i>Pinus sylvestris</i>	Scots Pine	27		3 Fair	5	Remove
33	<i>Pinus resinosa</i>	Red Pine	28		3 Fair	2.9	Remove
34	<i>Pinus sylvestris</i>	Scots Pine	10		3 Fair	1.7	Remove
35	<i>Prunus serotina</i>	Black Cherry	13		3 Fair	3.6	Remove
36	<i>Pinus sylvestris</i>	Scots Pine	31		2 Marginal	3.1	Remove
37	<i>Prunus serotina</i>	Black Cherry	14	base of tree in adjacent parcel	3 Fair	2.4	Preserve
39	<i>Thuja occidentalis</i>	Eastern White Cedar	53		3 Fair	3.7	Remove
40	<i>Picea pungens</i>	Colorado Spruce	68		5 Excellent	5.8	Remove
41	<i>Pinus sylvestris</i>	Scots Pine	21		1 Poor	2.2	Remove
42	<i>Pinus sylvestris</i>	Scots Pine	26		2 Marginal	3	Remove
43	<i>Pinus sylvestris</i>	Scots Pine	17, 26		2 Marginal	2.5	Remove
44	<i>Juglans cinerea</i>	Butternut	12, 16	buckthorn growing beside	2 Fair	4.2	Remove
a	<i>Acer rubrum</i>	Red Maple	15	multiple leaders	3 Fair	2.7	Preserve
b	<i>Sorbus decora</i>	Mountain Ash	10		4 Good	2.5	Preserve
c	<i>Quercus rubra</i>	Red Oak	22		5 Excellent	2	Preserve
d	<i>Acer rubrum</i>	Red Maple	13		4 Good	2.5	Preserve
e	<i>Acer rubrum</i>	Red Maple	10, 10	multiple leaders	3 Fair	3.5	Preserve
f	<i>Acer saccharinum</i>	Sugar Maple	22, 20, 14, 18	cluster	4 Good	6	Preserve
g	<i>Acer saccharinum</i>	Sugar Maple	11		4 Good	3	Preserve
h	<i>Acer saccharinum</i>	Sugar Maple	16		4 Good	4.5	Preserve
i	<i>Quercus rubra</i>	Red Oak	45		4 Good	6	Preserve
j	<i>Acer saccharinum</i>	Sugar Maple	85		4 Good	8.5	Preserve
k	<i>Betula papyrifera</i>	White Birch	55		4 Good	6	Preserve
l	<i>Populus deltoides</i>	Eastern Cottonwood	52, 84, 25	multiple leaders	4 Good	10.4	Preserve

Key	Latin Name	Common Name	Tree DIA (cm dbh)	Comments	Assessment	Canopy Radius (m)	Remove/Preserve
1TL	<i>Thuja occidentalis</i>	Eastern White Cedar	10, - 20	healthy crown, open grown	3 Fair	as outlined	Remove

Total Property Area (ha)	Total Removal Area	Compensation Unit Value	Total Compensation Value
0.44	0.137	\$ 57,500.00	\$ 7,877.50
Total (Subject to Rounding)			\$ 7,877.50



GENERAL NOTES

The Client and its contractors are responsible for all utility locates and confirming all setbacks, elevations, grades, etc. prior to installation of the constructed works. The Contractor is to report any discrepancies in writing to the Landscape Architect prior to proceeding with the works to determine the impact and suitability of the proposed works. The Landscape Architect will not be responsible for any unapproved adjustments on site.

Construction of the works must conform to Authority requirements and applicable codes where they have jurisdiction. All specifications and drawings are instruments of service and are the property and ownership of the Landmark Environmental Group Ltd. As such, the drawings shall not be modified or reproduced without the expressed written consent of Landmark Environmental Group Ltd. or they will be considered void. The said drawings are for Site Plan approval only and may require additional detailing prior to tender and construction.

The Landmark Environmental Group Ltd. is not liable for errors or omissions from the use of these drawings prior to approval, seal, signature and date, and will be considered void. It is advised that the Contractor contact the Landscape Architect prior to commencement of the construction works to ensure that the Contractor has the latest approved drawings. The Landmark Environmental Group Ltd. is not responsible for the accuracy of the base drawing information (eg Survey, Architectural, Engineering, etc.). If there are any discrepancies, the Contractor will refer to the appropriate base drawing information and report discrepancies to the Landscape Architect.

© Copyright Landmark Environmental Group Ltd.

LEGEND

- ⊕ ONSITE TREE LOCATION WITH CANOPY
- ⊕ OFFSITE TREE LOCATION WITH CANOPY
- BOUNDARY TREE
- X TREE RECOMMENDED FOR REMOVAL
- PROPERTY BOUNDARY
- TREE PRESERVATION FENCE
- 5m DEVELOPMENT SETBACK LIMIT

NO	DATE	BY	REVISIONS
2	JULY 11-24	S.K.	DEVELOPED LANDSCAPE CONCEPT PLAN FOR REVIEW
1	11-06-24	M.K.	ADJUSTED PROPERTY LINE ON LEG PACKAGE

STAMP

APPROVAL

AERIAL IMAGERY (2023) SOURCED FROM COURTESY SIMCOE COUNTY GIS
 SITE PLAN PROVIDED BY INNOVATIVE PLANNING SOLUTIONS INC.
 (2_23-1351_17May2024-Concept Plan.DWG) TRANS ON APRIL 17, 2024

LANDMARK ENVIRONMENTAL GROUP LTD
 LANDSCAPE ARCHITECTS & CONSULTING ARBORISTS
 OFFICE: 705-796-1122
 info@LEGroupLtd.com
 www.LEGroupLtd.com

CLIENT: FITCHAL INCORPORATED

PROJECT: TOWNHOUSE DEVELOPMENT
 127 & 131 ARDAGH ROAD

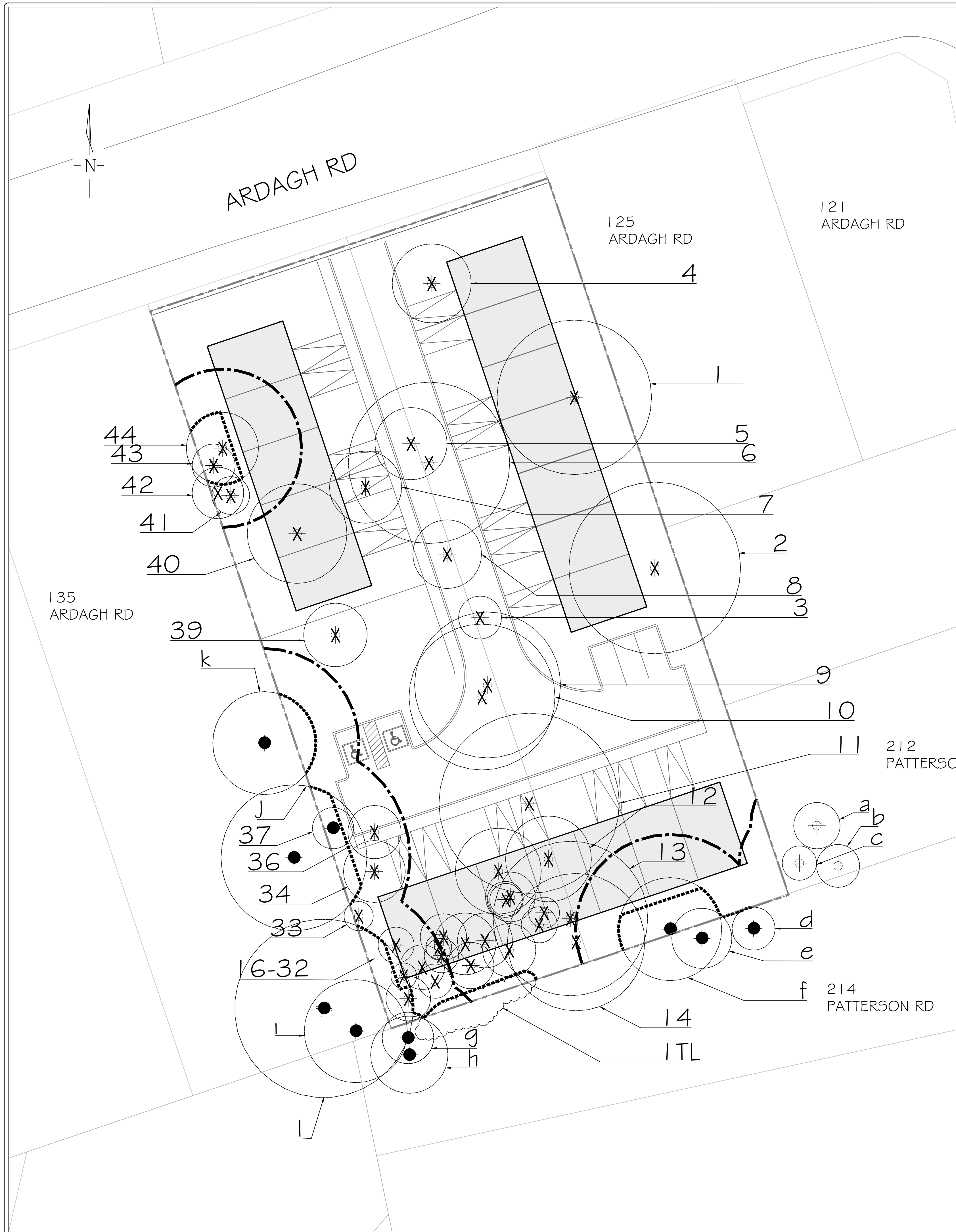
DRAWING: TREE PRESERVATION PLAN I

SCALE BAR: 5m 0 5 10 15
 Scale = 1:250

PROJECT NO.: LA 876-24 SCALE: 1:250

MUNICIPAL FILE NO.: DATE: APRIL 18, 2024

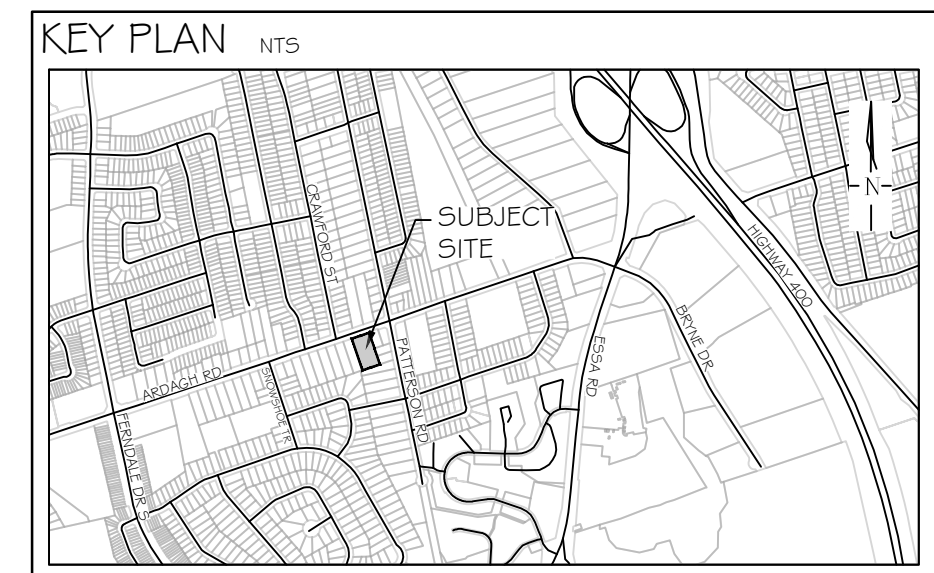
DRAWN BY: M.K., S.K. CHECKED BY: J.H. DRAWING No.: TP-1



Key	Latin Name	Common Name	Tree DIA (cm dbh)	Comments	Assessment	Canopy Radius (m)	Remove/Preserve
1	<i>Acer negundo</i>	Manitoba maple	71	healthy crown, open grown	3 Fair		9 Remove
2	<i>Prunus serotina</i>	Black Cherry	39, 40, 43	multi leaders below dbh, some dieback, codominant	4 Good		10 Remove
3	<i>Juglans nigra</i>	Black Walnut	12	imbedded in fence	2 Marginal		2.5 Remove
4	<i>Malus spp</i>	Apple spp.	10, 10	12 leaders,	2 Marginal		4.6 Remove
5	<i>Acer negundo</i>	Manitoba Maple	14	multiple leaders	2 Marginal		4.2 Remove
6	<i>Quercus rubra</i>	Red Oak	71	excellent	5 Excellent		9.4 Remove
7	<i>Malus spp</i>	Apple spp.	14, 13,	12 multiple leaders			4.2 Remove
8	<i>Fraxinus americana</i>	White Ash	14	grape vine	4 Good		4 Remove
9	<i>Juglans nigra</i>	Black Walnut	68	excellent	5 Excellent		8.5 Remove
10	<i>Acer negundo</i>	Manitoba Maple	99	multiple leaders , multiple dead leaders	2 Marginal		8.5 Remove
11	<i>Populus deltoides</i>	Eastern Cottonwood	70		4 Good		10.5 Remove
12	<i>Ulmus americana</i>	White Elm	27	surpressed	3 Fair		5 Remove
13	<i>Populus deltoides</i>	Eastern Cottonwood	96		4 Good		9 Remove
14	<i>Acer rubrum</i>	Red Maple	85	forked	3 Fair		8 Remove
16	<i>Pinus sylvestris</i>	Scots Pine	26		3 Fair		2.6 Remove
17	<i>Pinus sylvestris</i>	Scots Pine	26		3 Fair		2 Remove
18	<i>Pinus sylvestris</i>	Scots Pine	32				3.1 Remove
19	<i>Pinus sylvestris</i>	Scots Pine	27		3 Fair		2.7 Remove
20	<i>Pinus resinosa</i>	Red Pine	20				2 Remove
21	<i>Pinus resinosa</i>	Red Pine	24		3 Fair		2.6 Remove
22	<i>Pinus resinosa</i>	Red Pine	21				1.5 Remove
23	<i>Pinus resinosa</i>	Red Pine	28		3 Fair		1.5 Remove
24	<i>Pinus resinosa</i>	Red Pine	34		3 Fair		3.2 Remove
25	<i>Pinus resinosa</i>	Red Pine	29		3 Fair		2.1 Remove
26	<i>Pinus resinosa</i>	Red Pine	29		3 Fair		1.8 Remove
27	<i>Pinus resinosa</i>	Red Pine	28		3 Fair		2.1 Remove
28	<i>Pinus resinosa</i>	Red Pine	33		3 Fair		1.9 Remove
29	<i>Pinus resinosa</i>	Red Pine	26		3 Fair		3.6 Remove
30	<i>Pinus resinosa</i>	Red Pine	25		3 Fair		2.7 Remove
31	<i>Pinus resinosa</i>	Rec Pine	32		3 Fair		2.1 Remove
32	<i>Pinus sylvestris</i>	Scots Pine	27		3 Fair		5 Remove
33	<i>Pinus resinosa</i>	Red Pine	28		3 Fair		2.9 Remove
34	<i>Pinus sylvestris</i>	Scots Pine	10		3 Fair		1.7 Remove
35	<i>Prunus serotina</i>	Black Cherry	13				3.6 Remove
36	<i>Pinus sylvestris</i>	Scots Pine	31		2 Marginal		3.1 Remove
37	<i>Prunus serotina</i>	Black Cherry	14	base of tree in adjacent parcel	3 Fair		2.4 Preserve
39	<i>Thuja occidentalis</i>	Eastern White Cedar	53		3 Fair		3.7 Remove
40	<i>Picea pungens</i>	Colorado Spruce	68		5 Excellent		5.8 Remove
41	<i>Pinus sylvestris</i>	Scots Pine	21		1 Poor		2.2 Remove
42	<i>Pinus sylvestris</i>	Scots Pine	26		2 Marginal		3 Remove
43	<i>Pinus sylvestris</i>	Scots Pine	17, 26		2 Marginal		2.5 Remove
44	<i>Juglans cinerea</i>	Butternut	12, 16	buckthorn growing beside	2 Fair		4.2 Remove
a	<i>Acer rubrum</i>	Red Maple	15	multiple leaders	3 Fair		2.7 Preserve
b	<i>Sorbus decora</i>	Mountain Ash	10		4 Good		2.5 Preserve
c	<i>Quercus rubra</i>	Red Oak	22		5 Excellent		2 Preserve
d	<i>Acer rubrum</i>	Red Maple	13		4 Good		2.5 Preserve
e	<i>Acer rubrum</i>	Red Maple	10, 10	multiple leaders	3 Fair		3.5 Preserve
f	<i>Acer saccharinum</i>	Sugar Maple	22, 20, 14,	18 cluster	4 Good		6 Preserve
g	<i>Acer saccharinum</i>	Sugar Maple	11		4 Good		3 Preserve
h	<i>Acer saccharinum</i>	Sugar Maple	16		4 Good		4.5 Preserve
i	<i>Quercus rubra</i>	Red Oak	45		4 Good		6 Preserve
j	<i>Acer saccharinum</i>	Sugar Maple	85				8.5 Preserve
k	<i>Betula papyrifera</i>	White Birch	55		4 Good		6 Preserve
l	<i>Populus deltoides</i>	Eastern Cottonwood	52, 84, 25	multiple leaders			10.4 Preserve

Key	Latin Name	Common Name	Tree DIA (cm dbh)	Comments	Assessment	Canopy Radius (m)	Remove/Preserve
1TL	<i>Thuja occidentalis</i>	Eastern White Cedar	10 - 20	healthy crown, open grown	3 Fair	as outlined	Remove

Total Property Area (ha)	Total Removal Area	Compensation Unit Value	Total Compensation Value
0.44	0.137	\$ 57,500.00	\$ 7,877.50
Total (Subject to Rounding)			\$ 7,877.50



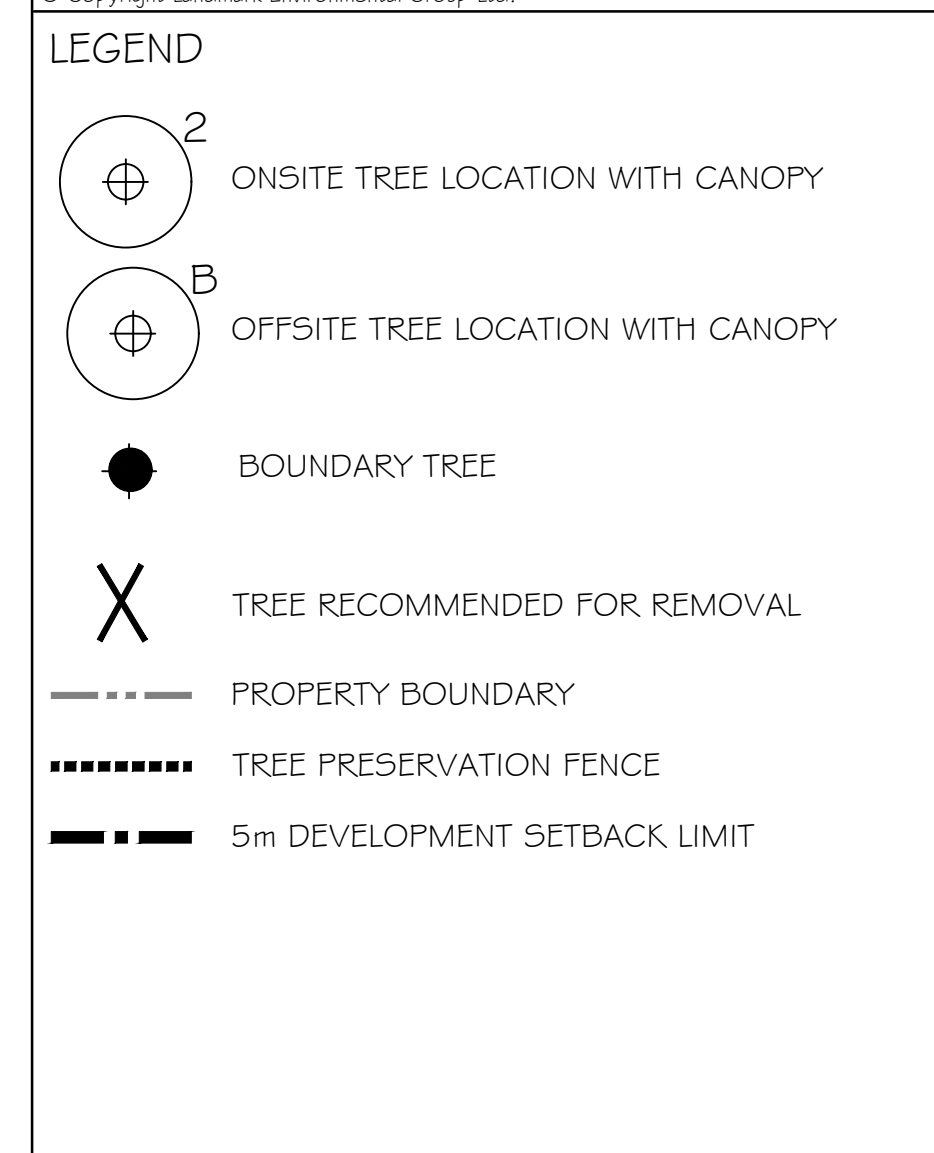
GENERAL NOTES

The Client and its contractors are responsible for all utility locates and confirming all setbacks, elevations, grades, etc. prior to installation of the constructed works. The Contractor is to report any discrepancies in writing to the Landscape Architect prior to proceeding with the works to determine the impact and suitability of the proposed works. The Landscape Architect will not be responsible for any unapproved adjustments on site.

Construction of the works must conform to Authority requirements and applicable codes where they have jurisdiction. All specifications and drawings are instruments of service and are the property and ownership of the Landmark Environmental Group Ltd. As such, the drawings shall not be modified or reproduced without the expressed written consent of Landmark Environmental Group Ltd. or they will be considered void. The said drawings are for Site Plan approval only and may require additional detailing prior to tender and construction.

The Landmark Environmental Group Ltd. is not liable for errors or omissions from the use of these drawings prior to approval, seal, signature and date, and will be considered void. It is advised that the Contractor contact the Landscape Architect prior to commencement of the construction works to ensure that the Contractor has the latest approved drawings. The Landmark Environmental Group Ltd. is not responsible for the accuracy of the base drawing information (eg Survey, Architectural, Engineering, etc.). If there are any discrepancies, the Contractor will refer to the appropriate base drawing information and report discrepancies on the Landscape Drawings to the Landscape Architect.

© Copyright Landmark Environmental Group Ltd.



NO	DATE	BY	REVISIONS
2	JULY 11-24	S.K.	DEVELOPED LANDSCAPE CONCEPT PLAN FOR REVIEW
1	11-06-24	M.K.	ADJUSTED PROPERTY LINE ON LEG PACKAGE

STAMP

APPROVAL

AERIAL IMAGERY (2023) SOURCED FROM COURTESY SIMCOE COUNTY GIS
 SITE PLAN PROVIDED BY INNOVATIVE PLANNING SOLUTIONS INC.
 (2_23-1351_17May2024-Concept Plan.DWG) TRANS ON APRIL 17, 2024

LANDMARK ENVIRONMENTAL GROUP LTD
 LANDSCAPE ARCHITECTS & CONSULTING ARBORISTS
 OFFICE: 705-796-1122
 info@LEGGroupLtd.com
 www.LEGroupLtd.com

CLIENT: FITCHAL INCORPORATED

PROJECT: TOWNHOUSE DEVELOPMENT
 127 # 131 ARDAGH ROAD

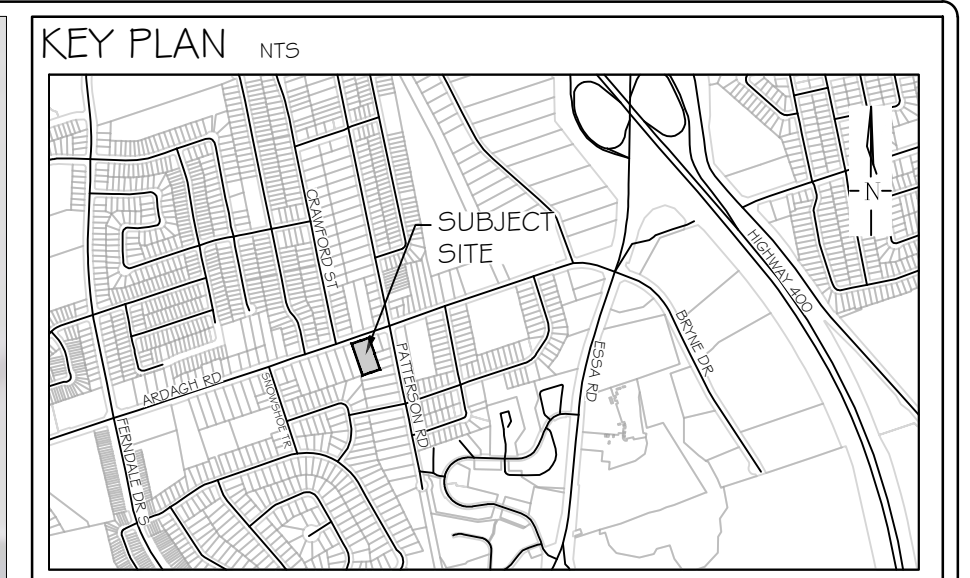
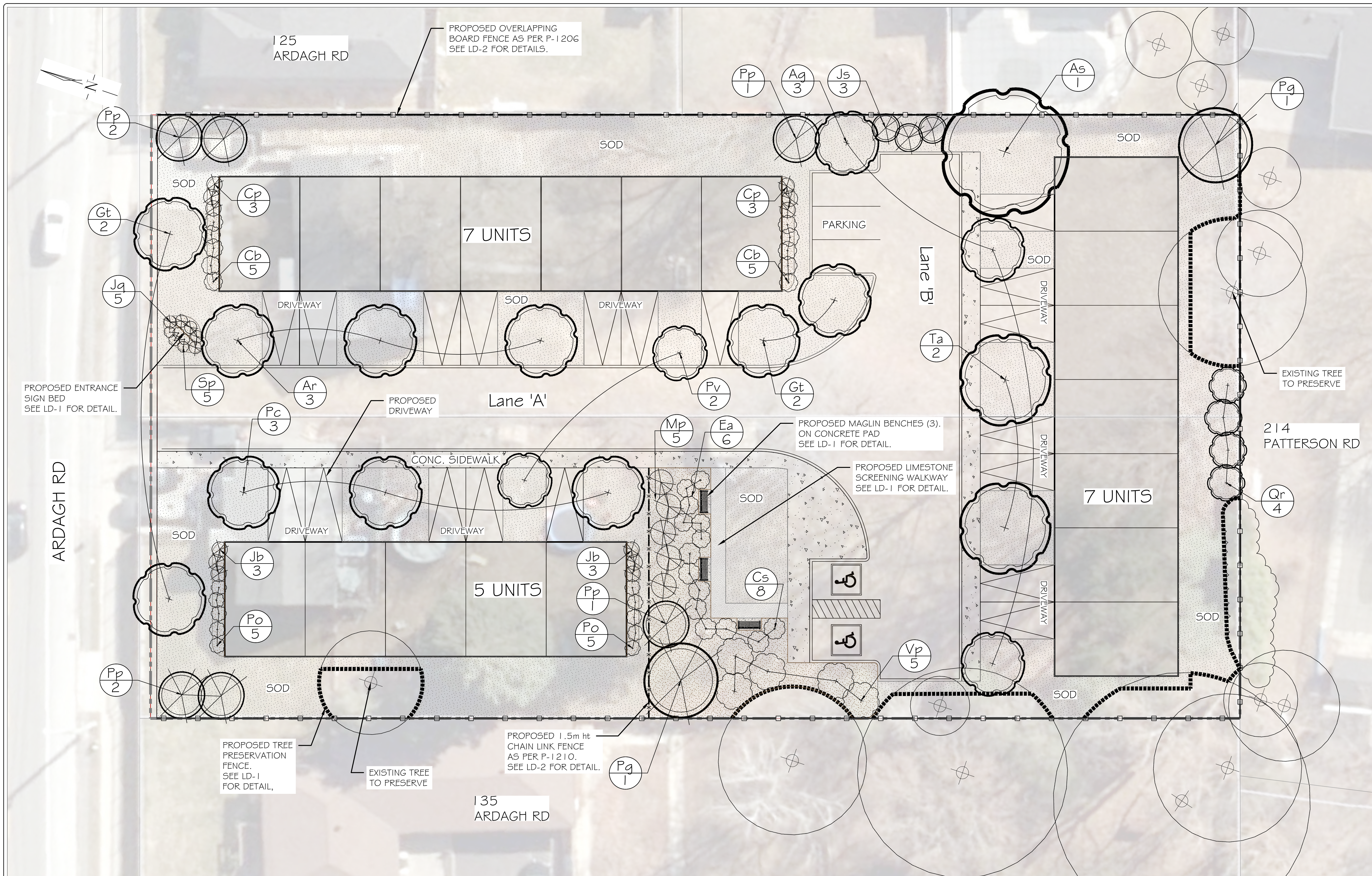
DRAWING: TREE PRESERVATION PLAN 2

SCALE BAR: 5m 0 5 10 15
 Scale = 1:250

PROJECT NO.: LA 876-24 SCALE: 1:250

MUNICIPAL FILE NO.: DATE: APRIL 18, 2024

DRAWN BY: M.K., S.K. CHECKED BY: J.H. DRAWING No.: TP-2



GENERAL NOTES

The Client and its contractors are responsible for all utility locates and confirming all setbacks, elevations, grades, etc. prior to installation of the constructed works. The Contractor is to report any discrepancies in writing to the Landscape Architect prior to proceeding with the works to determine the impact and suitability of the proposed works. The Landscape Architect will not be responsible for any unapproved adjustments on site.

Construction of the works must conform to Authority requirements and applicable codes where they have jurisdiction. All specifications and drawings are instruments of service and are the property and ownership of the Landmark Environmental Group Ltd. As such, the drawings shall not be modified or reproduced without the expressed written consent of Landmark Environmental Group Ltd. or they will be considered void. The said drawings are for Site Plan approval only and may require additional detailing prior to tender and construction.

The Landmark Environmental Group Ltd. is not liable for errors or omissions from the use of these drawings prior to approval, seal, signature and date, and will be considered void. It is advised that the Contractor contact the Landscape Architect prior to commencement of the construction works to ensure that the Contractor has the latest approved drawings. The Landmark Environmental Group Ltd. is not responsible for the accuracy of the base drawing information (eg Survey, Architectural, Engineering, etc.). If there are any discrepancies, the Contractor will refer to the appropriate base drawing information and report discrepancies on the Landscape Drawings to the Landscape Architect.

© Copyright Landmark Environmental Group Ltd.

LEGEND

	Proposed Deciduous Tree		Proposed Coniferous Tree
	Proposed Deciduous Shrubs		Proposed Coniferous Shrubs
	Plant Key		Existing Trees
	SOD AREA (1.376m²)		SNOW STORAGE AREA
	GARDEN MULCH BED (204m²)		LIMESTONE SCREENING (21m²)
	SEATING BENCH ON CONCRETE PAD (2m²)		PROPOSED CONC. SIDEWALK (BY OTHERS)
	Property Boundary		Proposed 2m High Privacy Wood Fence (224m)
	Proposed 1.5m High Chain Link Fence (20m)		Tree Preservation Fence

NO.	DATE	BY	REVISIONS
2	JULY 11-24	S.K.	DEVELOPED LANDSCAPE CONCEPT PLAN FOR REVIEW
1	11-06-24	M.K.	ADJUSTED PROPERTY LINE ON LEG PACKAGE

STAMP

APPROVAL

SITE PLAN PROVIDED BY INNOVATIVE PLANNING SOLUTIONS INC. (2_23-135_1_17May2024-Concept Plan.DWG) TRANS ON APRIL 17, 2024

LANDMARK ENVIRONMENTAL GROUP LTD
LANDSCAPE ARCHITECTS & CONSULTING ARBORISTS
OFFICE: 705-796-1122
info@LEGGroupLtd.com
www.LEGroupLtd.com

CLIENT: FITCHAL INCORPORATED

PROJECT: TOWNHOUSE DEVELOPMENT
127 & 131 ARDAGH ROAD

DRAWING: LANDSCAPE PLAN

SCALE BAR: 3m 0 3 6 9
Scale = 1:150

PROJECT NO.: LA 876-24
MUNICIPAL FILE NO.:
SCALE: 1:150
DATE: APRIL 18, 2024
DRAWN BY: M.K., S.K.
CHECKED BY: J.H.
DRAWING No.: L-1

PLANT LIST

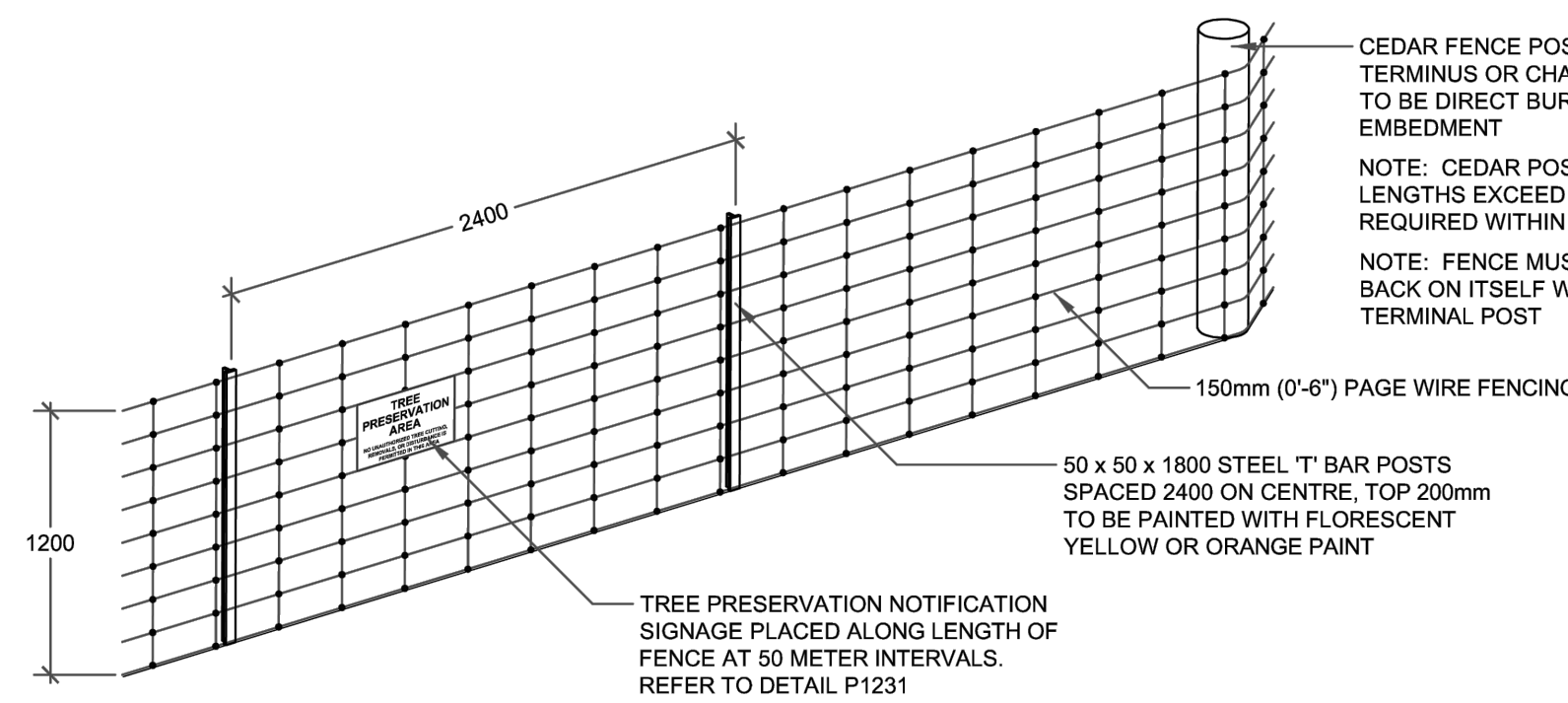
PLANT DENSITY CALCULATIONS

AREA: 4,302sq. m	TYPE: RESIDENTIAL		
REQUIRED MIN. TOTALS	PROPOSED TOTALS	VEGETATION TYPE	REQUIRED SIZING
22	22	DECIDUOUS TREES	60mm CAL
11	11	EVERGREEN TREES	2m HT
44	44	DECIDUOUS SHRUBS	0.6-1.2m HT
22	22	EVERGREEN SHRUBS	0.45m SPR/1.2m HT

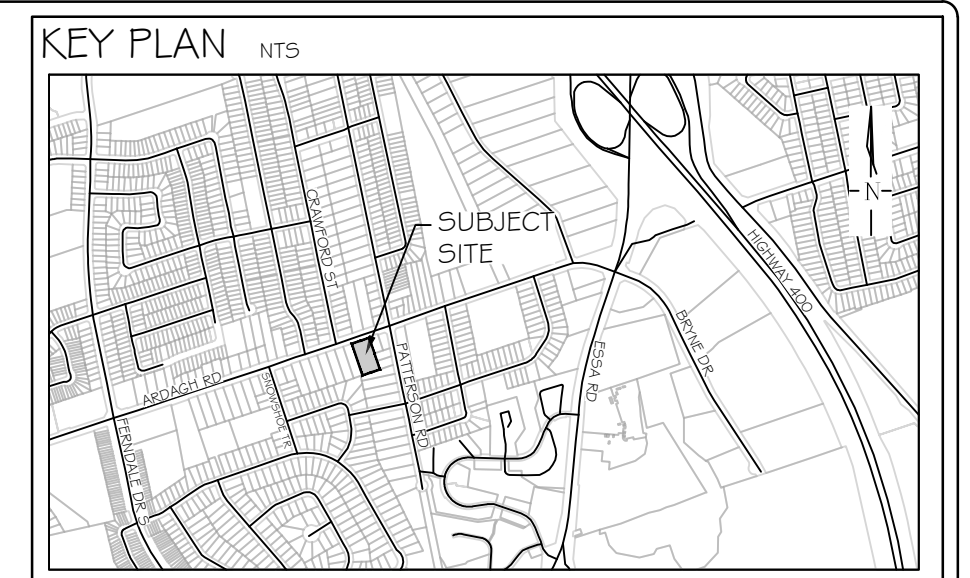
KEY	QTY	BOTANICAL NAME	COMMON NAME	SIZE/CONDITION	KEY	QTY	BOTANICAL NAME	COMMON NAME	SIZE/CONDITION
DECIDUOUS TREES					DECIDUOUS SHRUBS				
Ar	3	<i>Acer rubrum</i> 'Karpick'	Karpick Maple	60mm cal/WB	Cs	8	<i>Cornus sanguinea</i> 'Midwinter Fire'	Midwinter Fire Dogwood	2 gal pot/60cm ht
As	1	<i>Acer saccharum</i> 'Legacy'	Legacy Sugar Maple	60mm cal/WB	Cb	10	<i>Cornus sericea</i> 'Bailadeline'	Firedance Dogwood	2 gal pot/60cm ht
Ag	3	<i>Amelanchier x grandiflora</i> 'Autumn Brilliance'	Autumn Brilliance Serviceberry	60mm cal/WB	Ea	6	<i>Evonymus alatus</i> 'Fire Ball'	Fire Ball Burning Bush	2 gal pot/60cm ht
Gt	4	<i>Gleditsia triacanthos</i> var. <i>inermis</i> 'Street Keeper'	Street Keeper Honeylocust	60mm cal/WB	Po	10	<i>Physocarpus opulifolius</i> 'Dart's Gold'	Dart's Gold Ninebark	2 gal pot/60cm ht
Pc	3	<i>Pyrus calleryana</i> 'Chanticleer'	Chanticleer Ornamental Pear	60mm cal/WB	Sp	5	<i>Spiraea japonica</i> 'Poprocks Pineapple'	Pineapple Poprocks Spirea	2 gal pot/60cm ht
Pv	2	<i>Prunus virginiana</i> 'Shubert'	Shubert Chokecherry	60mm cal/WB	Vp	5	<i>Viburnum plicatum</i> f. <i>tomentosum</i> 'Shasta'	Shasta Doublefile Viburnum	2 gal pot/60cm ht
Qr	4	<i>Quercus robur</i> 'Fastigiata'	Pyramidal English Oak	60mm cal/WB	EVERGREEN SHRUBS				
Ta	2	<i>Tilia americana</i> 'Redmond'	Redmond Basswood	60mm cal/WB	Cp	6	<i>Chamaecyparis pisifera</i> 'Filifera Aurea Nana'	Dwarf Golden Threadleaf Falsecypress	2 gal pot/60cm ht
EVERGREEN TREES					Jb	6	<i>Juniperus sabina</i> 'Blue Danube'	Blue Danube Juniper	2 gal pot/60cm ht
Js	3	<i>Juniperus scopulorum</i> 'Moonglow'	Moonglow Juniper	2m ht WB	Jq	5	<i>Juniperus squamata</i> 'Blue Star'	Blue Star Juniper	3gal 40cm
Pg	2	<i>Picea glauca</i>	White Spruce	2m ht WB	Mp	5	<i>Myrica pensylvanica</i>	Bayberry	2 gal pot/60cm ht
Pp	6	<i>Picea pungens</i> 'Fat Albert'	Fat Albert Blue Spruce	2m ht WB					



- SIGNS MUST BE FABRICATED FROM WEATHER RESISTANT MATERIAL.
- SIGNS ARE TO BE SECURELY FASTENED AND PLACED IN 50 METER INTERVALS ALONG ALL TREE PRESERVATION FENCING.
- SIGNS MUST REMAIN POSTED FOR THE DURATION OF THE PROJECT OR UNTIL APPROVAL TO REMOVE PRESERVATION FENCING IS PROVIDED BY THE MUNICIPALITY.
- ALL DIMENSIONS ARE IN MILLIMETRES.
- THIS DETAIL IS TO BE USED IN CONJUNCTION WITH P1230 AND P1232.



- THIS DETAIL IS USED IN CONJUNCTION WITH P1233.
- PAGE WIRE FENCE TO BE ATTACHED TO CEDAR RAIL POSTS WITH 'U' SHAPED GALVANIZED NAILS ON EACH HORIZONTAL STRAND.
- USE A MINIMUM OF FOUR (4) 100MM, 16 GAUGE GALVANIZED T-POST CLIPS TO ATTACH PAGE WIRE FENCE TO EACH 'T' BAR POST.
- 'T' BARS ARE TO BE DRIVEN INTO THE GROUND TO A MINIMUM DEPTH OF 600MM.
- ALL MEASUREMENTS ARE IN MILLIMETRES UNLESS OTHERWISE NOTED.
- THIS DETAIL TO BE USED IN CONJUNCTION WITH P1230, P1231, P1234 AND P1235.



GENERAL NOTES

The Client and its contractors are responsible for all utility locates and confirming all setbacks, elevations, grades, etc. prior to installation of the constructed works. The Contractor is to report any discrepancies in writing to the Landscape Architect prior to proceeding with the works to determine the impact and suitability of the proposed works. The Landscape Architect will not be responsible for any unapproved adjustments on site.

Construction of the works must conform to Authority requirements and applicable codes where they have jurisdiction. All specifications and drawings are instruments of service and are the property and ownership of the Landmark Environmental Group Ltd. As such, the drawings shall not be modified or reproduced without the expressed written consent of Landmark Environmental Group Ltd. or they will be considered void. The said drawings are for Site Plan approval only and may require additional detailing prior to tender and construction.

The Landmark Environmental Group Ltd. is not liable for errors or omissions from the use of these drawings prior to approval, seal, signature and date, and will be considered void. It is advised that the Contractor contact the Landscape Architect prior to commencement of the construction works to ensure that the Contractor has the latest approved drawings. The Landmark Environmental Group Ltd. is not responsible for the accuracy of the base drawing information (eg Survey, Architectural, Engineering, etc.). If there are any discrepancies, the Contractor will refer to the appropriate base drawing information and report discrepancies on the Landscape Drawings to the Landscape Architect.

© Copyright Landmark Environmental Group Ltd.

Barrie SIGN TREE PRESERVATION AREA **P1231**

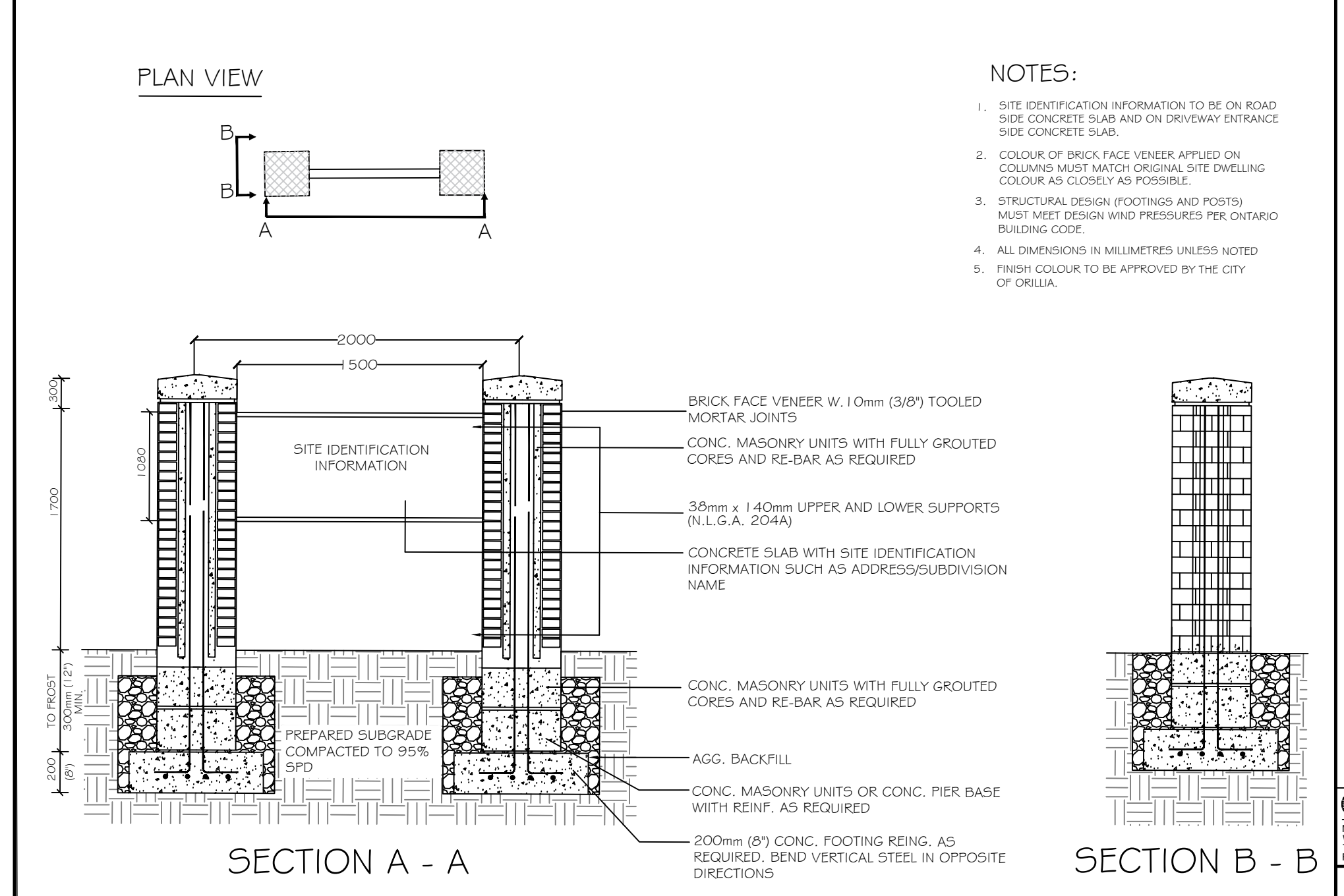
Barrie FENCE TREE PRESERVATION **P1232**

REV No. 2 DATE: APR 2023 SCALE: N.T.S. **P1232**

LEGEND

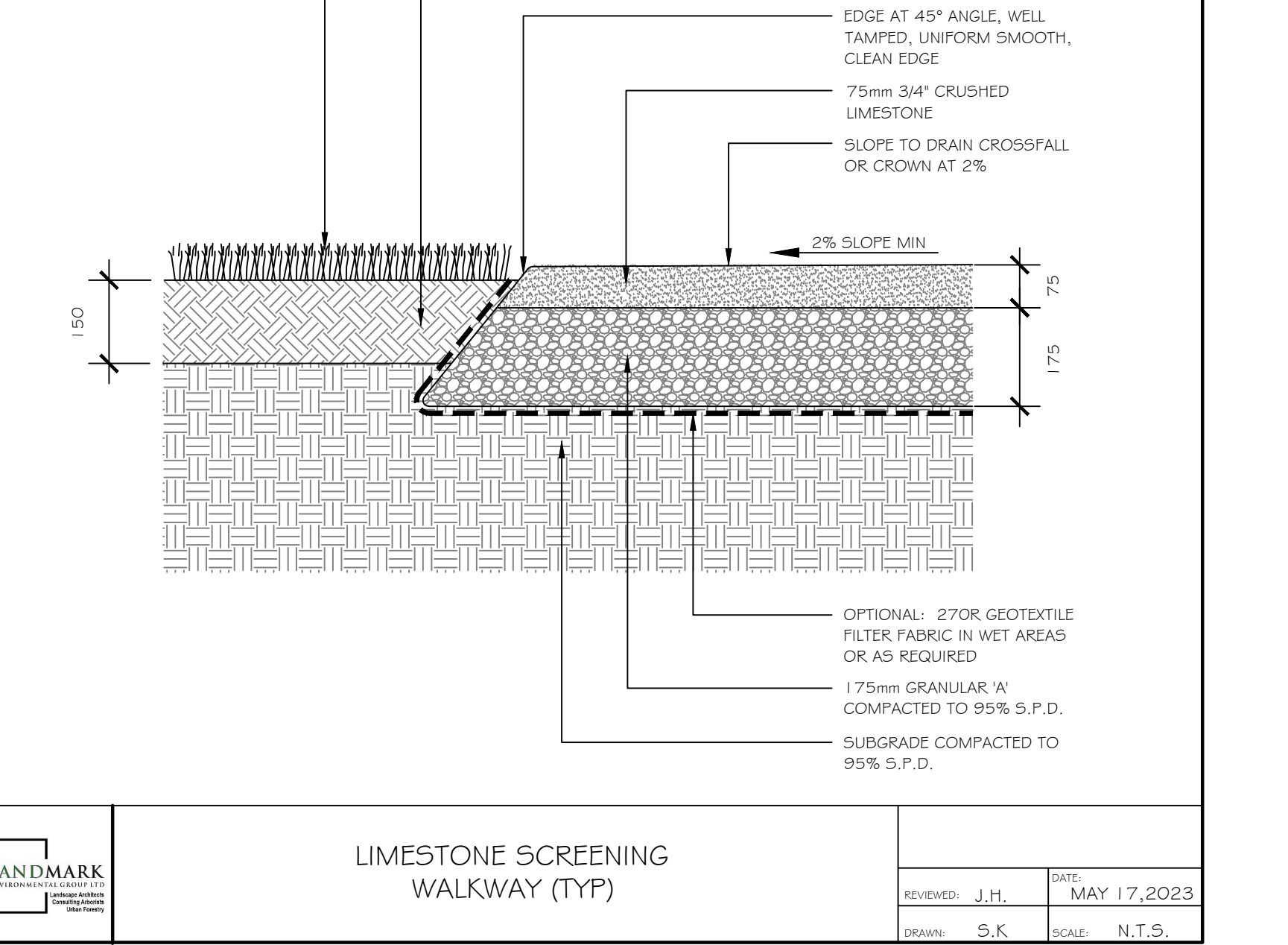
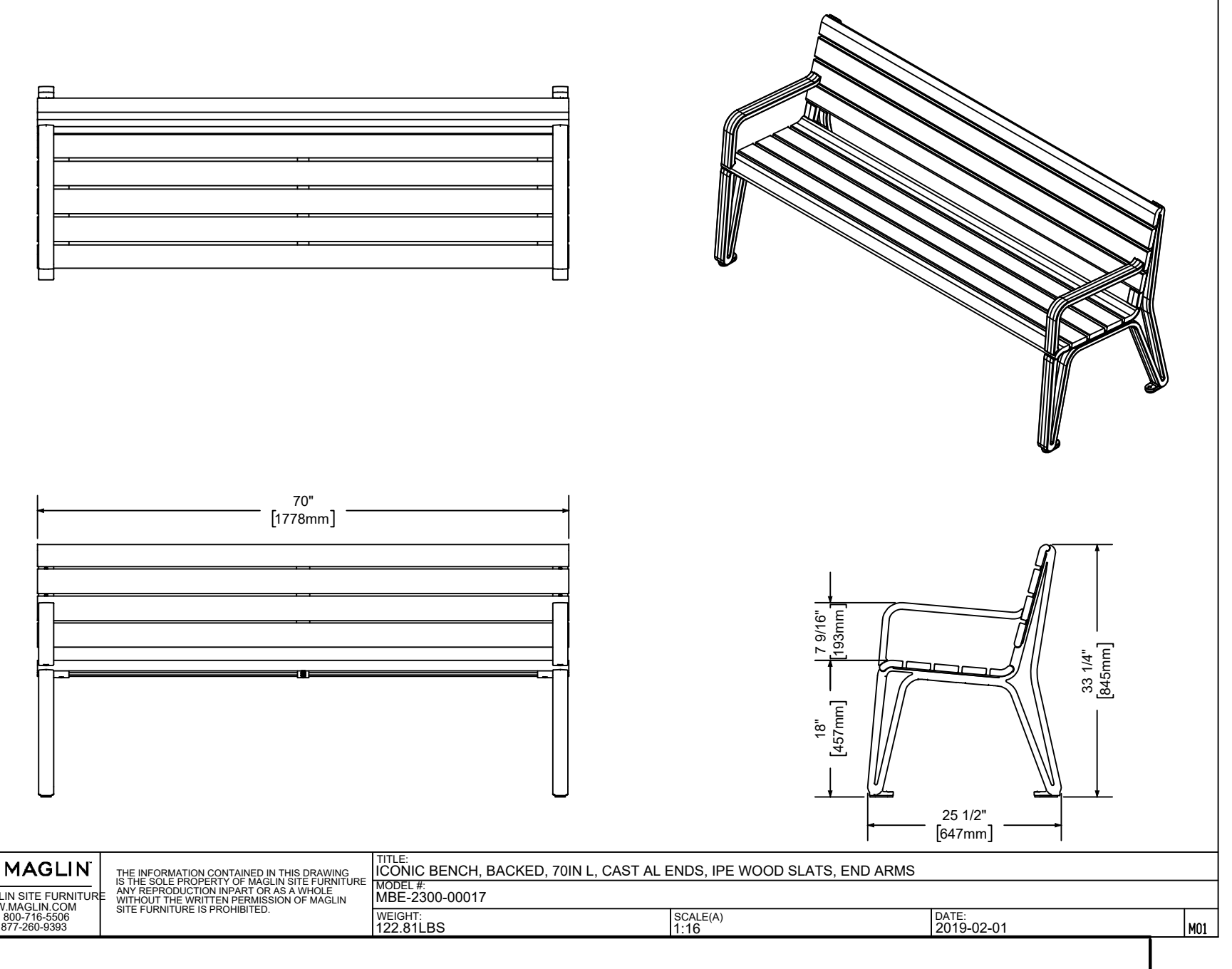
TREE PRESERVATION NOTES

- THE INTENT OF THE TREE PRESERVATION PLAN IS TO PROVIDE PROTECTION AND PRESERVATION FOR EXISTING TREES ON THE SUBJECT PROPERTY. THEREFORE, ALL TREES ARE TO BE PRESERVED UNLESS OTHERWISE INDICATED IN THE PLAN OR THE ARBORIST'S REPORT. CONTACT THE LANDSCAPE ARCHITECT TO CONFIRM THE REMOVAL/RETENTION STATUS OF ANY TREES ON SITE, PRIOR TO CLEARING AND GRUBBING. THE OWNER WILL TAKE EVERY PRECAUTION TO PROTECT AND PRESERVE THE TREES APPROVED TO BE RETAINED IN ACCORDANCE WITH THE APPROVED PLANS.
- PRIOR TO THE COMMENCEMENT OF ANY CLEARING, GRUBBING OR CONSTRUCTION WORKS, THE REQUIRED HOARDING WILL BE ERECTED OUTSIDE OF THE OUTERMOST DRIFLINE OF ANY TREE TO BE RETAINED, IN ACCORDANCE WITH THE HOARDING DETAIL, AND TO THE SATISFACTION OF THE LANDSCAPE ARCHITECT. ERECTION OF ANY PROTECTION FENCING SHALL BE UNDER THE DIRECTION OF THE LANDSCAPE ARCHITECT.
- IT IS THE RESPONSIBILITY OF THE CONTRACTOR TO ERECT AND MAINTAIN ALL HOARDING AS PER THE APPROVED DETAIL, PRESERVATION NOTES AND LOCATIONS SHOWN ON THE DRAWINGS.
- NO STORAGE OF EQUIPMENT OR VEHICLES, NOR ANY STOCKPILING OF MATERIAL IS TO OCCUR WITHIN THE AREA OF PRESERVATION/PROTECTION. TREES SLATED FOR PROTECTION WILL NOT BE USED FOR RIGGING OR WRAPPING. THE PROTECTION/PRESERVATION AREA SHALL NOT BE USED TO EMPTY CONTAMINANTS, REFUELING OR REPAIR OF VEHICLES OR EQUIPMENT.
- TREES LOCATED ON THE IMMEDIATE EDGE OF THE CONSTRUCTION WORKS ARE TO BE PRUNED IN THE INTEREST OF SAFETY, IN ACCORDANCE WITH APPROVED ARBORICULTURAL PRACTICES.
- TREE LOCATIONS ARE APPROXIMATE AND THEREFORE VERIFICATION ON SITE IS REQUIRED.
- SHOULD A TREE REQUIRED TO BE PROTECTED BECOME DAMAGED OR REMOVED WITHOUT WRITTEN PERMISSION OF THE CITY OF BARRIE OR THE LANDSCAPE ARCHITECT, THE CONTRACTOR OR OWNER WILL BE RESPONSIBLE FOR REPLACEMENT OF THE TREE OF EQUAL CALIPER AND ACCEPTABLE TREE SPECIES AT THE DISCRETION AND SATISFACTION OF THE LANDSCAPE ARCHITECT.
- THE WORK COMPLETED BY THE CONTRACTOR WILL NOT CAUSE OR EXACERBATE FLOODING CONDITIONS OR CAUSE SEDIMENT BUILDUP OVER THE ROOTZONE OF PROTECTED TREES. NO GRADING SHALL TAKE PLACE WITHIN THE TREE PRESERVATION AREA UNLESS OTHERWISE APPROVED BY THE LANDSCAPE ARCHITECT.
- ANY REQUIRED LIMB TRIMMING SHALL BE UNDER THE DIRECT SUPERVISION OF THE LANDSCAPE ARCHITECT OR A QUALIFIED ARBORIST.
- PRESERVATION FENCING TO BE INSTALLED IN ACCORDANCE WITH THE APPROVED DETAIL. FILTER FABRIC TO BE INSTALLED IN CONJUNCTION WITH THE APPROVED ENGINEERING DRAWINGS.
- HOARDING/TREE PRESERVATION MAY BE COMPLETED IN CONJUNCTION WITH SEDIMENTATION CONTROL.



ENTRANCE FEATURE DETAIL
NOT TO SCALE

APRD: J.H. DATE: 16.11.15
DRAWN: N.H. SCALE: N.T.S.



NO	DATE	BY	REVISIONS
2	JULY 11-24	S.K.	DEVELOPED LANDSCAPE CONCEPT PLAN FOR REVIEW
1	11-06-24	M.K.	ADJUSTED PROPERTY LINE ON LEG PACKAGE

STAMP **APPROVAL**



LANDMARK ENVIRONMENTAL GROUP LTD. LANDSCAPE ARCHITECTS & CONSULTING ARBORISTS
OFFICE: 705-796-1122
info@LEGGroupLtd.com www.LEGroupLtd.com

CLIENT: FITCHAL INCORPORATED

PROJECT: TOWNHOUSE DEVELOPMENT
127 & 131 ARDAGH ROAD

DRAWING: DETAILS 1

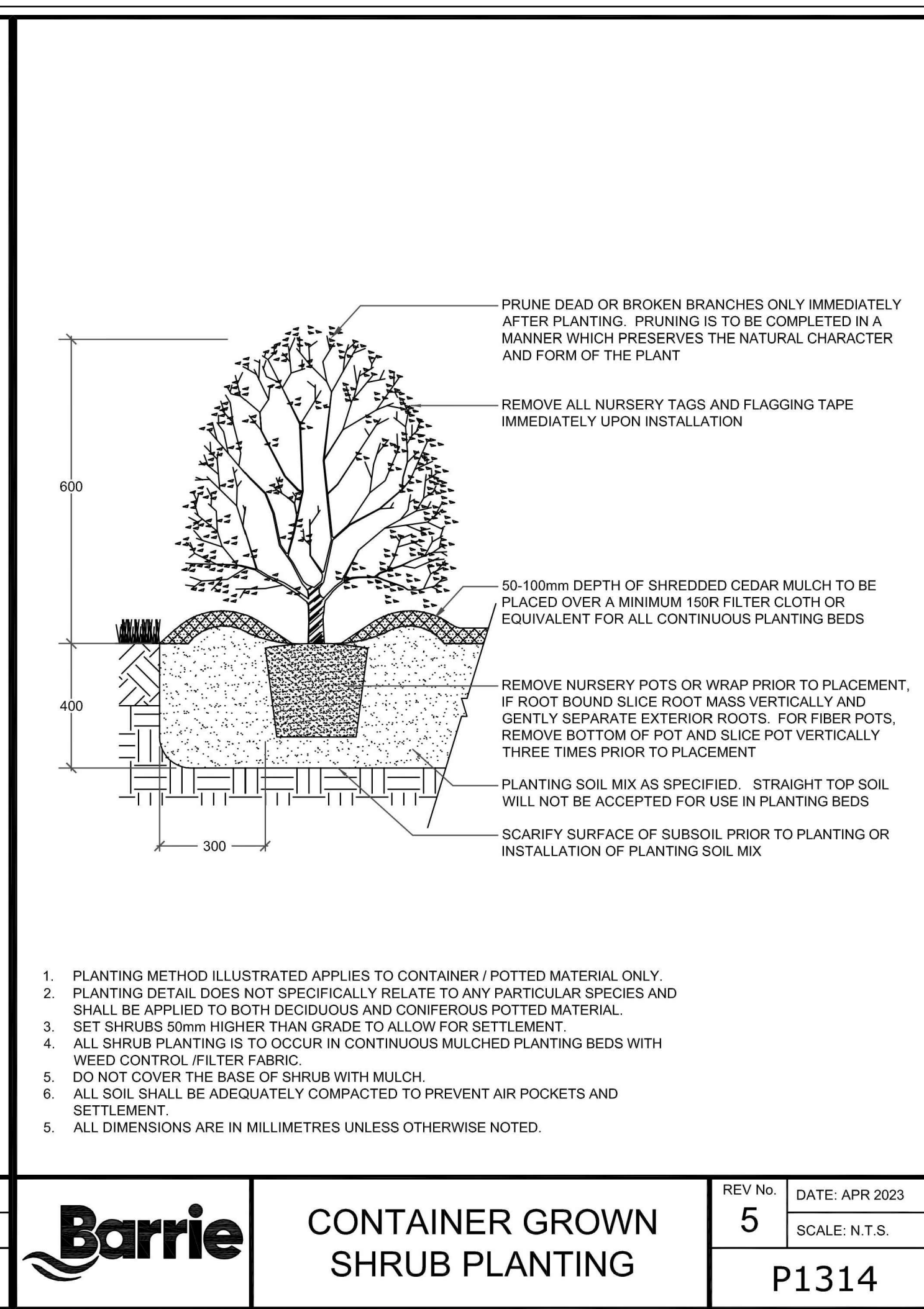
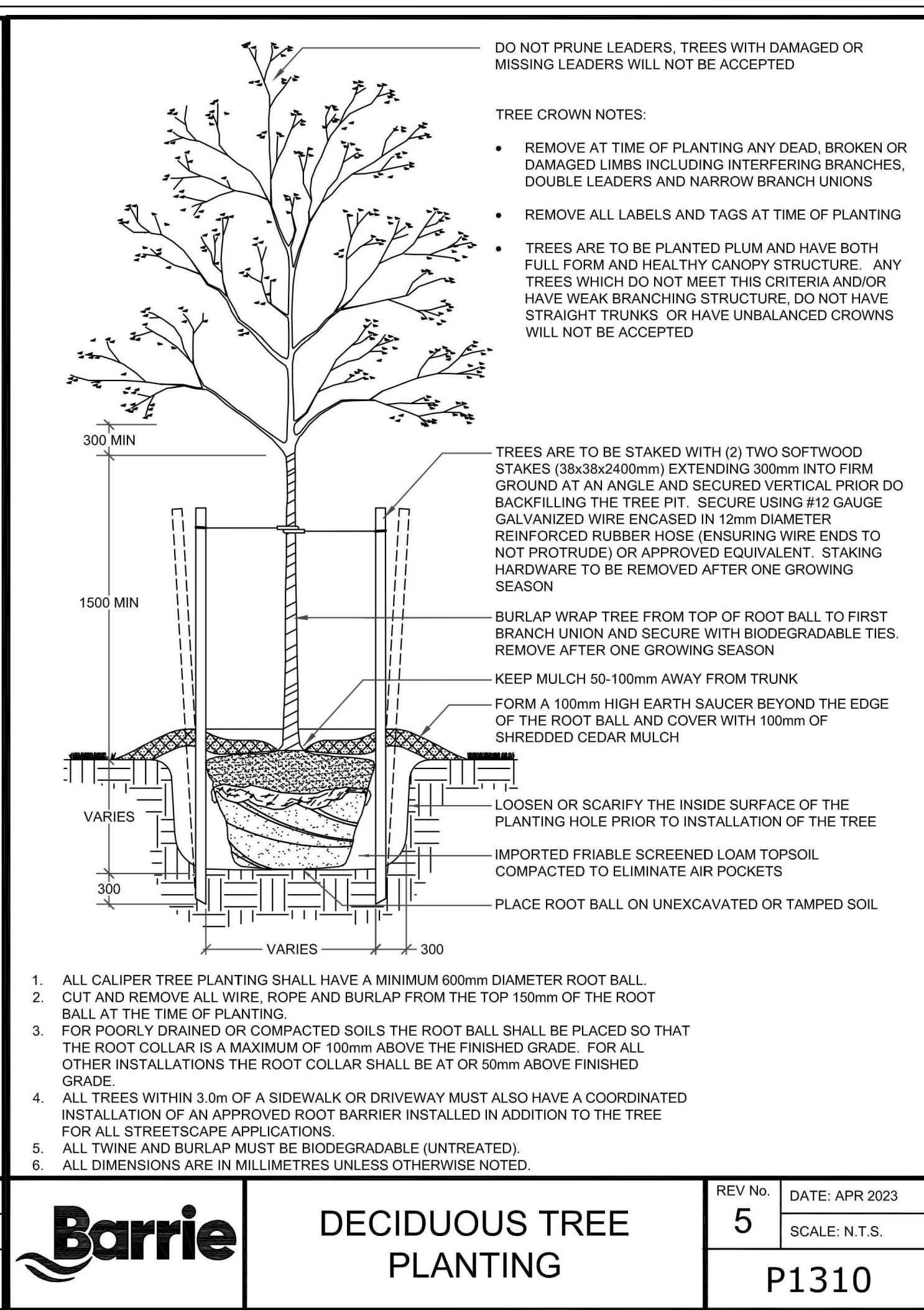
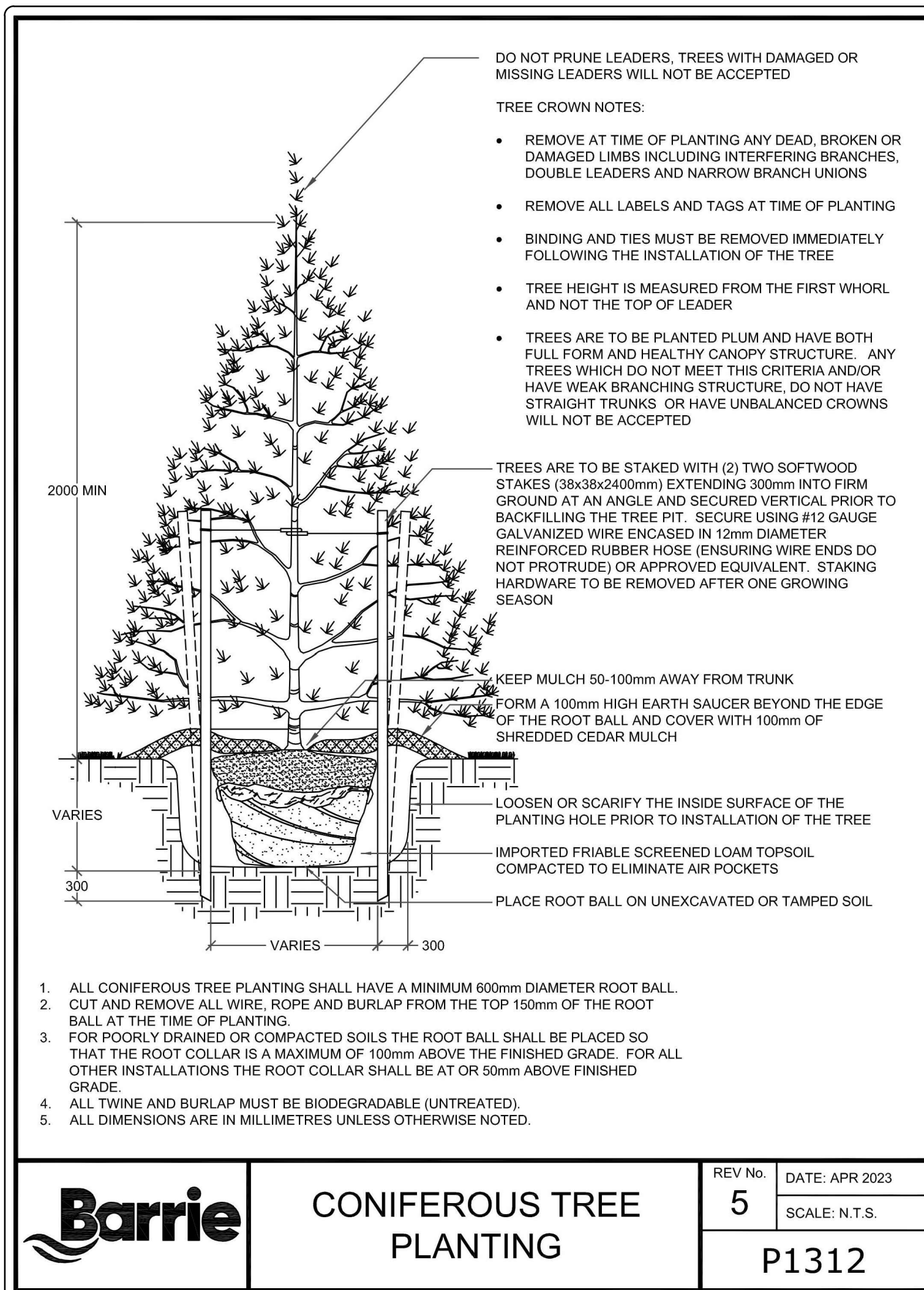
SCALE BAR:

PROJECT NO.: LA 876-24 SCALE: N.T.S.

MUNICIPAL FILE NO.: DATE: APRIL 18, 2024

DRAWN BY: M.K., S.K. CHECKED BY: J.H. DRAWING No.: LD-1





PLANTING NOTES

- The Contractor shall review all information in all drawings details and specifications and report any discrepancies to the Landscape Architect in writing prior to commencement of works.
- All planting and related work shall be completed by experienced personnel under the direction and supervision of a qualified foreman.
- All plant material which cannot be planted immediately will be properly heeled in or covered with a similar material which will keep root surfaces moist until planted.
- All plant material and operations shall meet or exceed current horticultural standards of the Canadian Nursery Landscape Association. All plant material to be No. 1 Grade Nursery Stock. All unsatisfactory stock including field grown will be refused on site.
- The Landscape Architect reserves the right to reject any material, plantings and sod prior to or after installation which does not conform to approved specifications in accordance with approved details. The Contractor will be asked to remove any unapproved material which does not conform to specifications unless there is prior written agreement with the Landscape Architect.
- Trees and shrubs shall have an uncut, strong central leader, be sound, healthy, vigorous, well-branched, densely foliated, free of disease, insects and have well-developed root systems.
- Where applicable, sod to be Canada No. 1 Nursery Sod, meeting Ontario Sod Growers Association Standards. All Areas to receive 200mm minimum depth of topsoil under sod unless otherwise indicated. See Drawings and Specifications for areas to be mulched.
- The Contractor shall stake out all planting locations for approval by the Landscape Architect or Contract Administrator prior to planting. Where dimensions are not provided, the drawing may be scaled ONLY to determine approximate locations of plant material. Dimensions are in millimeters unless otherwise stated.
- All mass plantings shall be in continuous beds with mulch as specified in planting details.
- All planting will be under warranty by the Contractor for a minimum of 2 years. The Contractor shall water at time of planting and whenever deemed necessary to maintain trees in a healthy condition. Apply aqueous fertilizer in a ratio of 10-6-4 in accordance with manufacturers instructions. Sod, where specified, to be maintained and guaranteed until the end of warranty period, minimum after two mowings.
- Unwrap or do not wrap tree trunks. Stake trees in accordance with required specifications.
- Provide sufficient rodent protection on all new planting so as to deter bark or shoot damage by rodents. Significant rodent damage, as determined by the Landscape Architect will require plant replacement.

KEY PLAN NT5

GENERAL NOTES

The Client and its contractors are responsible for all utility locates and confirming all setbacks, elevations, grades, etc. prior to installation of the constructed works. The Contractor is to report any discrepancies in writing to the Landscape Architect prior to proceeding with the works to determine the impact and suitability of the proposed works. The Landscape Architect will not be responsible for any unapproved adjustments on site.

Construction of the works must conform to Authority requirements and applicable codes where they have jurisdiction. All specifications and drawings are instruments of service and are the property and ownership of the Landmark Environmental Group Ltd. As such, the drawings shall not be modified or reproduced without the expressed written consent of Landmark Environmental Group Ltd. or they will be considered void. The said drawings are for Site Plan approval only and may require additional detailing prior to tender and construction.

The Landmark Environmental Group Ltd. is not liable for errors or omissions from the use of these drawings prior to approval, seal, signature and date, and will be considered void. It is advised that the Contractor contact the Landscape Architect prior to commencement of the construction works to ensure that the Contractor has the latest approved drawings. The Landmark Environmental Group Ltd. is not responsible for the accuracy of the base drawing information (eg Survey, Architectural, Engineering, etc.). If there are any discrepancies, the Contractor will refer to the appropriate base drawing information and report discrepancies on the Landscape Drawings to the Landscape Architect.

© Copyright Landmark Environmental Group Ltd.

LEGEND

Barrie

CONIFEROUS TREE PLANTING

REV No. **5** DATE: APR 2023
SCALE: N.T.S.

P1312

Barrie

DECIDUOUS TREE PLANTING

REV No. **5** DATE: APR 2023
SCALE: N.T.S.

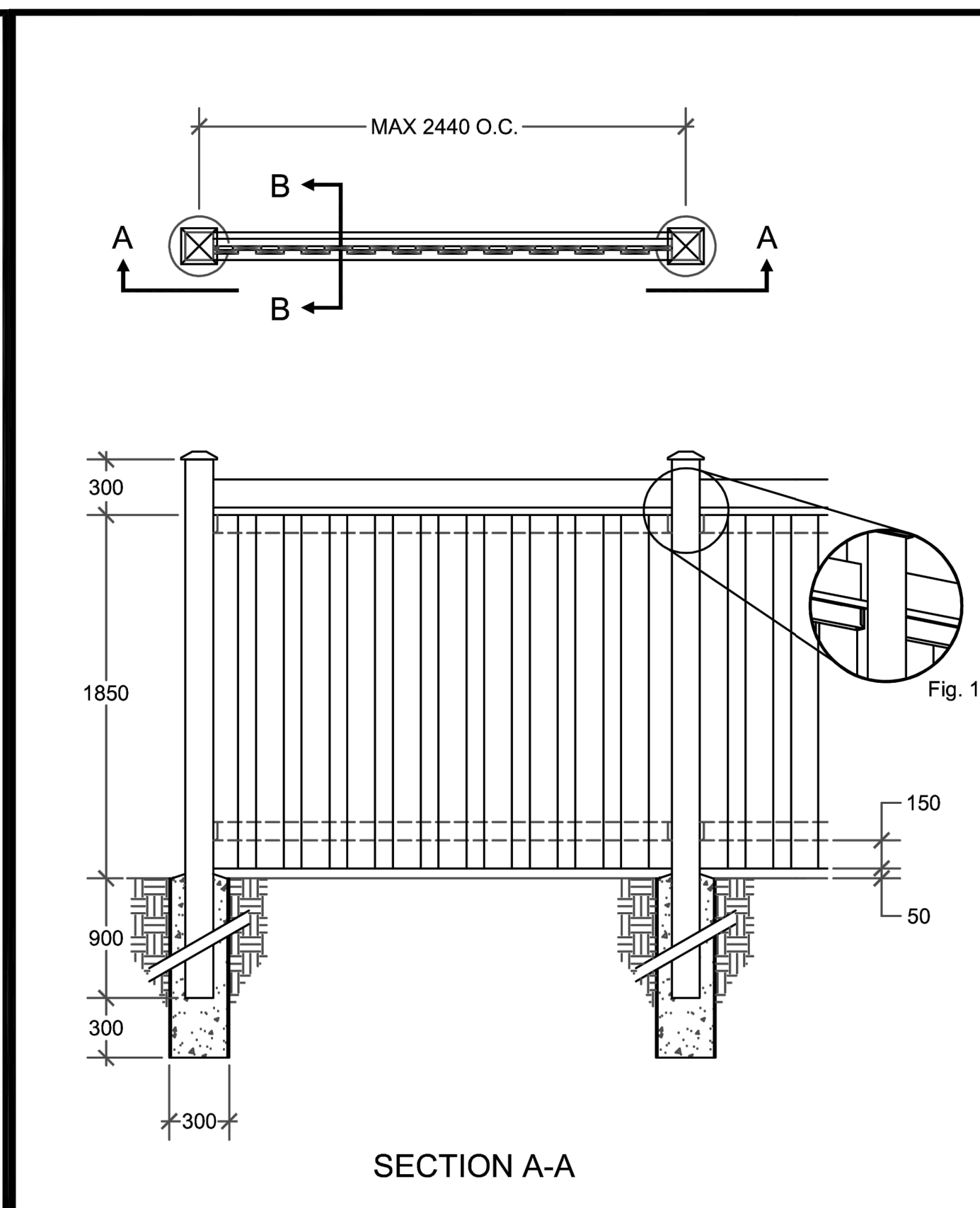
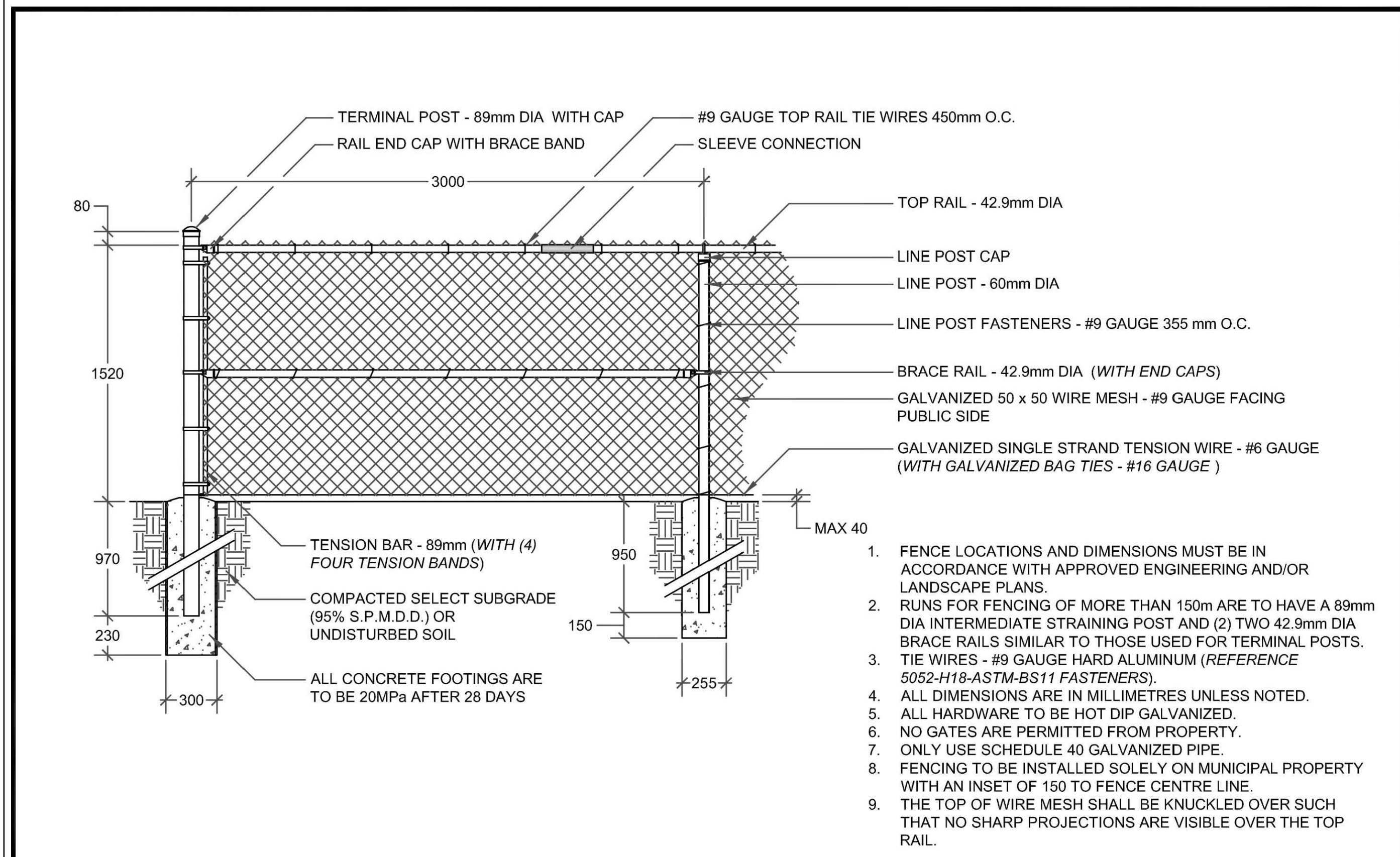
P1310

Barrie

CONTAINER GROWN SHRUB PLANTING

REV No. **5** DATE: APR 2023
SCALE: N.T.S.

P1314



Barrie

FENCE 1.52m CHAIN LINK

REV No. **2** DATE: APR 2023
SCALE: N.T.S.

P1210

Barrie

FENCE OVERLAPPING BOARD

REV No. **2** DATE: APR 2023
SCALE: N.T.S.

P1206

2 JULY 11-24 S.K. DEVELOPED LANDSCAPE CONCEPT PLAN FOR REVIEW

1 11-06-24 M.K. ADJUSTED PROPERTY LINE ON LEG PACKAGE

NO DATE BY REVISIONS

STAMP

APPROVAL

LANDMARK ENVIRONMENTAL GROUP LTD
Landscape Architects
Consulting Arborists
Urban Forestry

OFFICE: 705-796-1122
info@LEGGroupLtd.com
www.LEGroupLtd.com

CLIENT: FITCHAL INCORPORATED

PROJECT: TOWNHOUSE DEVELOPMENT
127 & 131 ARDAGH ROAD

DRAWING: DETAILS 2

SCALE BAR:

PROJECT NO.: LA 876-24 SCALE: N.T.S.

MUNICIPAL FILE NO.: DATE: APRIL 18, 2024

DRAWN BY: M.K, S.K. CHECKED BY: J.H. DRAWING No.: LD-2