

*CONSTRUCTION NOTES ARE THE PROPERTY OF VULCAN DESIGN INC. AND MAY NOT BE DUPLICATED OR COPIED WITH OUT THE WRITTEN CONSENT OF VULCAN DESIGN INC.
*ANY SUBSTITUTE MATERIALS TO NOTES STATED SHALL CONFORM TO O.B.C. REGULATIONS AND MANUFACTURES SPECIFICATIONS SHALL BE SUPPLIED BY BUILDER
**ONLY HEX NOTES IDENTIFIED ON PLANS / ELEVATIONS SHALL APPLY
*NOTES / CONSTRUCTION TO CONFORM TO 2012 ONTARIO BUILDING CODE

VULCAN DESIGN INC.
Professional Service, Exceptional Value

35 MCDONALD STREET
ALLISTON, ON L9R 1J5
PH: 416-885-5200



EMAIL: dberry@vulcandesigninc.com
CONTACT PERSON: DANIEL BERRY

BCIN DECLARATION:

I DANIEL BERRY DECLARE THAT I HAVE REVIEWED & TAKE DESIGN RESPONSIBILITY FOR THE DESIGN WORK UNDER DIVISION C, PART 3 SECTION 3.2 OF THE ONTARIO BUILDING CODE. I AM QUALIFIED AND THE FIRM IS REGISTERED IN THE APPROPRIATE CATEGORIES.
FIRM BCIN: 36501
DESIGNER BCIN: 21107

SIGNATURE: _____ DATE: _____

LEGEND / LINTELS:

LINTELS:

WOOD
W1 2/2"x8"
W2 2/2"x10"
W3 2/2"x12"
W4 3/2"x8"
W5 3/2"x10"
W6 3/2"x12"

LVL (2.0E)

2-LVL 7 2-1 3/4" X 7-1/4"
3-LVL 7 3-1 3/4" X 7-1/4"
2-LVL 9 2-1 3/4" X 9-1/2"
3-LVL 9 3-1 3/4" X 9-1/2"
2-LVL 11 2-1 3/4" X 11-7/8"
3-LVL 11 3-1 3/4" X 11-7/8"
2-LVL 14 2-1 3/4" X 14"
3-LVL 14 3-1 3/4" X 14"

U.N.O. FASTEN MULTIPLE PLY LVL'S
(2) ROWS @ 12" O.C. 3/2" (16d) NAILS
OR SDW SCREWS

STEEL LINTELS

S1 <4'-0" L3-1/2" X 3-1/2" - 1/4"
S2 <6'-0" L4" X 3-1/2" X 1/4"
S3 <8'-0" L5" X 3-1/2" X 5/16"
S4 <10'-0" L6" X 3-1/2" X 5/16"
-BEAR LINTELS MIN. 6" EACH END
-LINTELS SHALL BE PRIMED TO "OSICOPMA 2-3"
-ORIENT ANGLES LONG LEG VERT.
-MAX. 1" BRICK OVERHANG
-WEEP HOLES @ 56" O.C. MAX

SOLID BEARING

(SAME WIDTH AS SUPPORTED MEMBER)

CONCENTRATED POINT LOAD

FIRE PLACE VENT

DRYER VENT

STOVE VENT

CELLAR VENT

SMOKE ALARM

CARBON MONOXIDE DETECTOR

HOSE BIB

WATERPROOF ELECTRICAL OUTLET

HOOD/CELLAR VENT

DRYER VENT

ABBREVIATIONS:

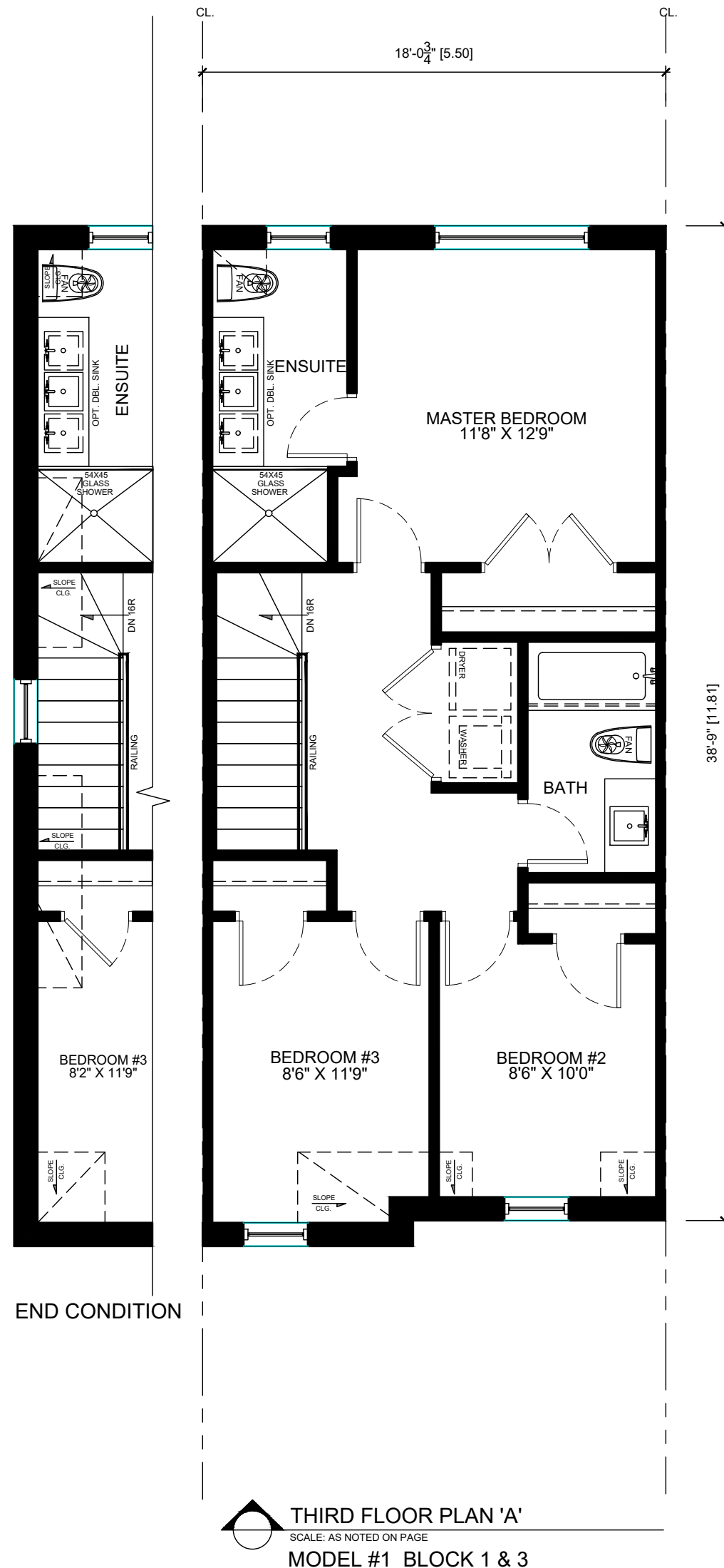
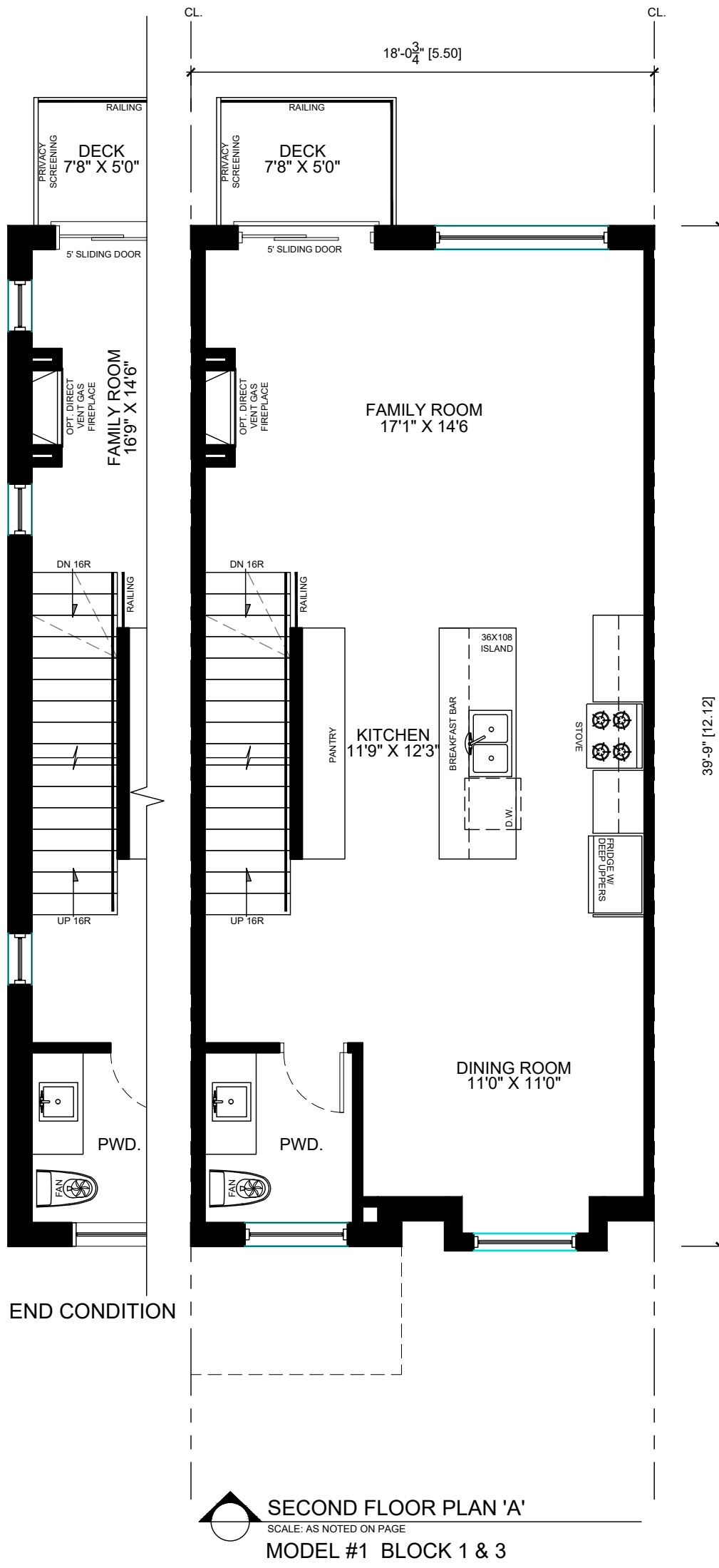
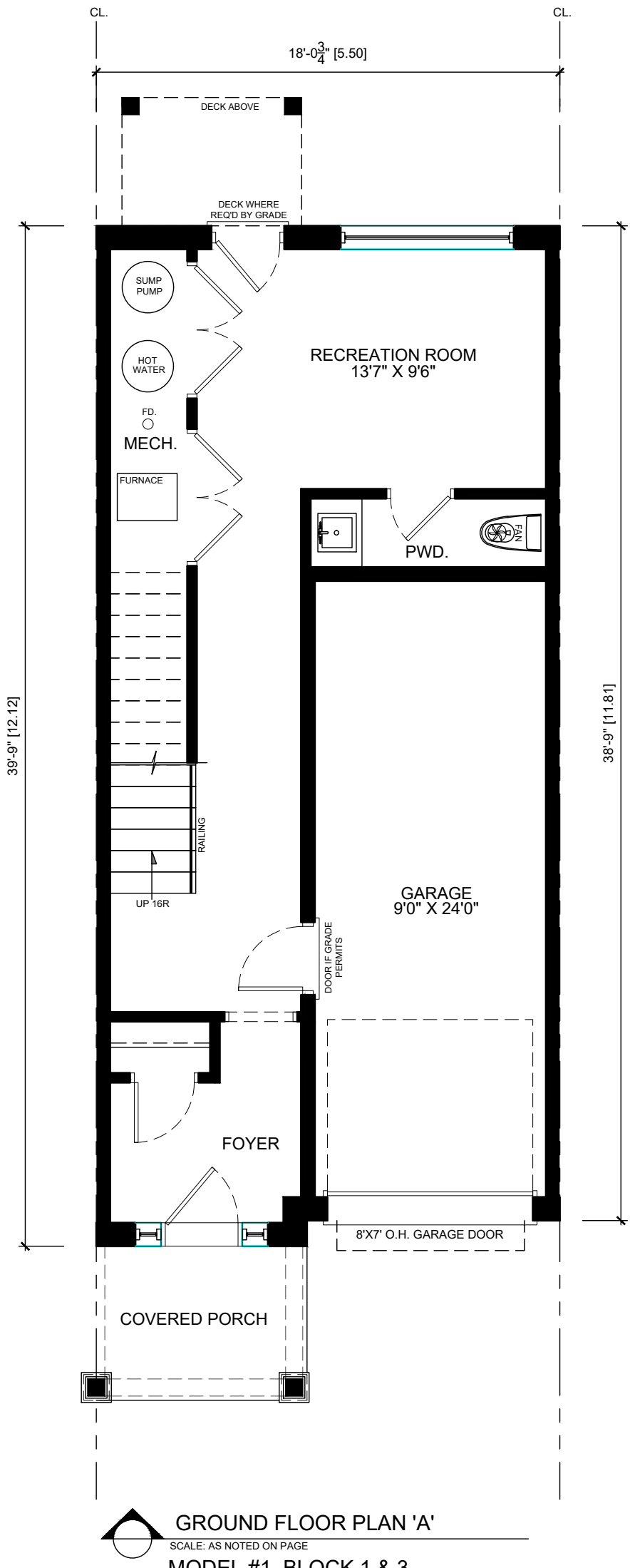
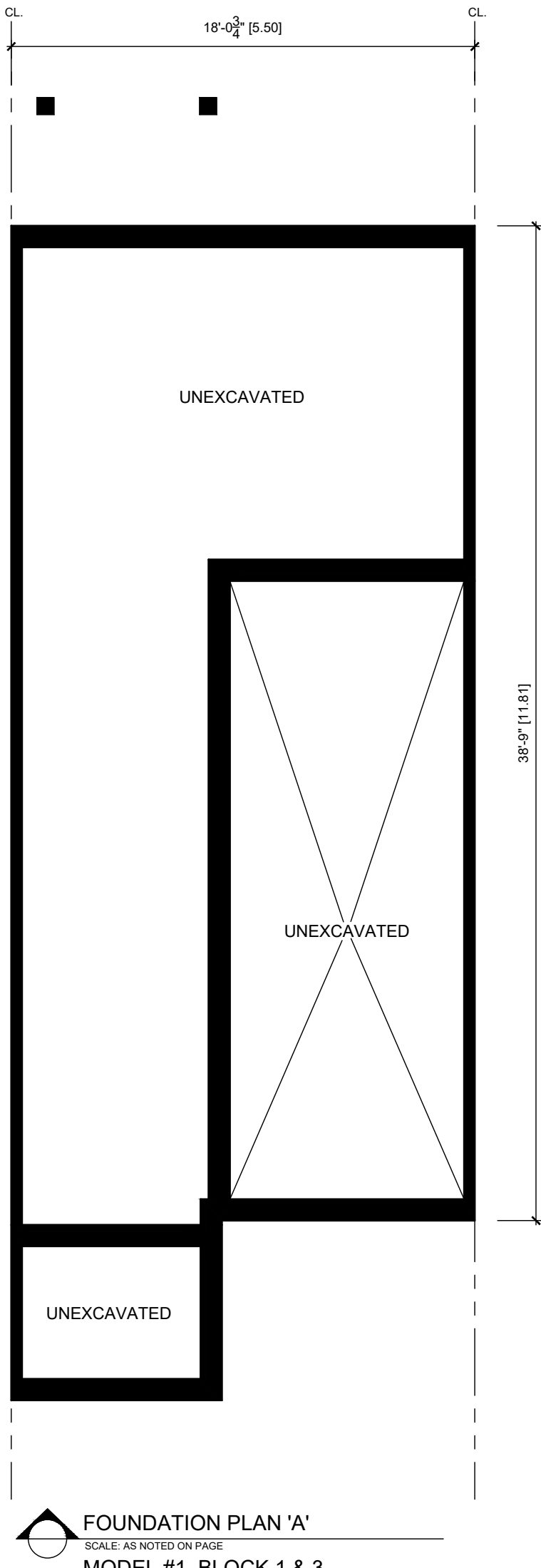
DJ DOUBLE JOIST
TJ TRIPLE JOIST
GT GIRDER TRUSS
DO DO OVER
RJ ROOF JOISTS
STL STEEL
SB SOLID BEARING (SEE FRAMING REQ.'S)
PL POINT LOAD
(FL) FLUSH
(DR.) DROPPED

FG. FIXED GLASS

FDTN. FOUNDATION
BG. BLACK GLASS
JT JACK TRUSS
U/S UNDERSIDE
T/O TOP OF
CLG. CEILING

BBFM BEAM BY FLOOR MANUFACTURE
GAS LINE
CABLE LINE
PHONE JACK
CEILING EXHAUST FAN
PULL CHAIN CLG. LIGHT
CEILING LIGHT
3 WAY SWITCH
LIGHT SWITCH
ELECTRIC RECEPTACLE (42" OFF FINISH FLOOR)
FLOOR DRAIN

AREA CALCULATIONS			
GROUND	#	470	#2 43,663
SECOND	#	715	#2 66,434
THIRD	#	758	#2 69,723
- O.T.R.	#	0	#2 0.000
TOTAL	#	1893	#2 179,860
FIN. BASEMENT	#	0	#2 0.000
TOTAL	#	1893	#2 179,860
COVERAGE CALCULATIONS			
GROUND	#	470	#2 43,663
SECOND	#	227	#2 22,577
FRONT PORCH	#	49	#2 4,352
REAR PORCH	#	0	#2 0.000
CON. W/O PORCH	#	707	#2 65,685
CON. W/ PORCH	#	756	#2 70,232



Preliminary
(Not for Construction)

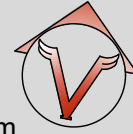
PROJECT: V22-0677
334&340 ARDAGH ROAD
BARRIE, ON

PG. CONTENT: FLOOR PLANS
SCALE: 3/16" = 1'-0"
PAGE: A1

*CONSTRUCTION NOTES ARE THE PROPERTY OF VULCAN DESIGN INC. AND MAY NOT BE DUPLICATED OR COPIED WITH OUT THE WRITTEN CONSENT OF VULCAN DESIGN INC.
*ANY SUBSTITUTE MATERIALS TO NOTES STATED SHALL CONFORM TO O.B.C. REGULATIONS AND MANUFACTURES SPECIFICATIONS SHALL BE SUPPLIED BY BUILDER
**ONLY HEX NOTES IDENTIFIED ON PLANS / ELEVATIONS SHALL APPLY
*NOTES / CONSTRUCTION TO CONFORM TO 2012 ONTARIO BUILDING CODE

VULCAN DESIGN INC.
Professional Service, Exceptional Value

35 MCDONALD STREET
ALLISTON, ON L9R 1J5
PH: 416-885-5200



EMAIL: dberry@vulcandesigninc.com
CONTACT PERSON: DANIEL BERRY

BCIN DECLARATION:

I DANIEL BERRY DECLARE THAT I HAVE REVIEWED & TAKE DESIGN RESPONSIBILITY FOR THE DESIGN WORK UNDER DIVISION C, PART 3 SECTION 3.2 OF THE ONTARIO BUILDING CODE. I AM QUALIFIED AND THE FIRM IS REGISTERED IN THE APPROPRIATE CATEGORIES.
FIRM BCIN: 36501
DESIGNER BCIN: 21107

SIGNATURE: _____ DATE: _____

LEGEND / LINTELS:

LINTELS:

WOOD
W1 2/2"x8"
W2 2/2"x10"
W3 2/2"x12"
W4 3/2"x8"
W5 3/2"x10"
W6 3/2"x12"

LVL (2.0E)

2-LVL 7 2-1 3/4" X 7-1/4"
3-LVL 7 3-1 3/4" X 7-1/4"
2-LVL 9 2-1 3/4" X 9-1/2"
3-LVL 9 3-1 3/4" X 9-1/2"
2-LVL 11 2-1 3/4" X 11-7/8"
3-LVL 11 3-1 3/4" X 11-7/8"
2-LVL 14 2-1 3/4" X 14"
3-LVL 14 3-1 3/4" X 14"

U.N.O. FASTEN MULTIPLE PLY LVL'S
(2) ROWS @ 12" O.C. 3 1/2" (16d) NAILS
OR SDW SCREWS

STEEL LINTELS

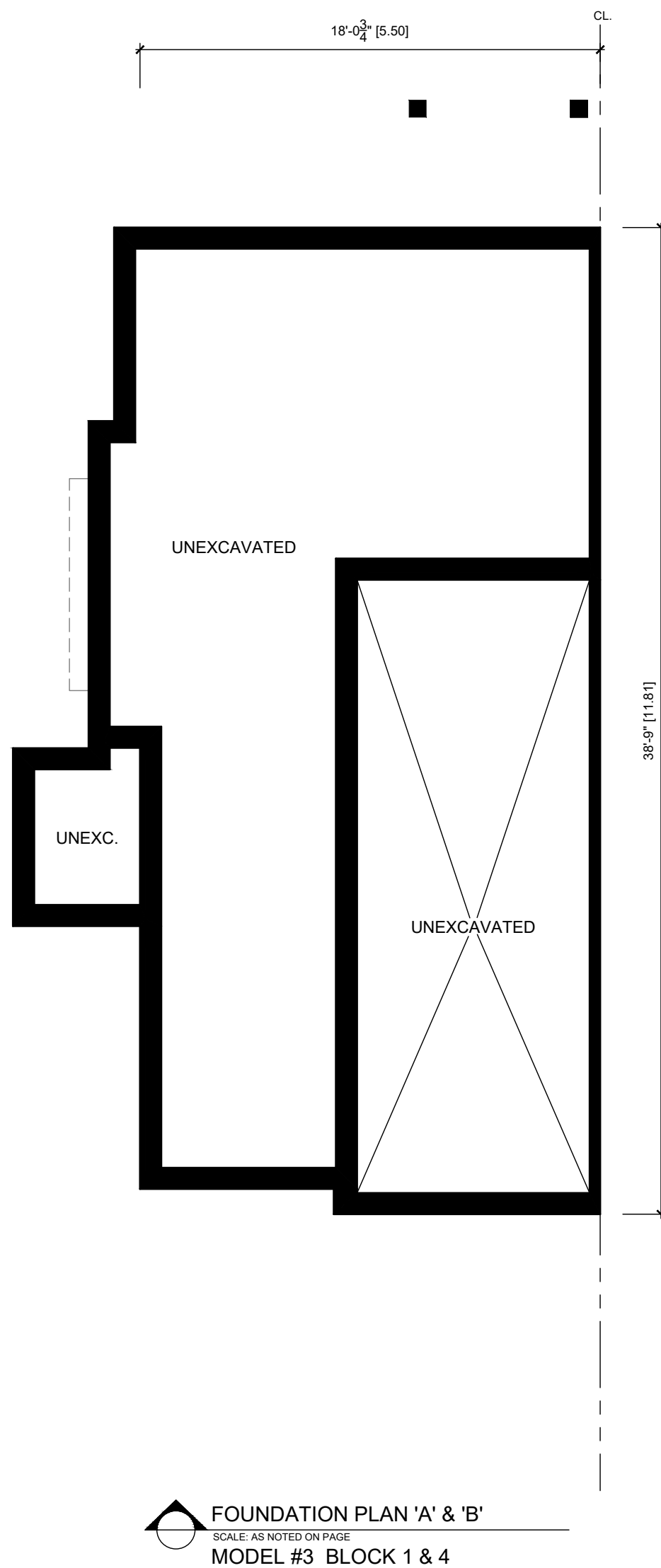
S1 <4'-0" L3-1/2" X 3-1/2" - 1/4"
S2 <6'-0" L4" X 3-1/2" X 1/4"
S3 <8'-0" L5" X 3-1/2" X 5/16"
S4 <10'-0" L6" X 3-1/2" X 5/16"
-BEAR LINTELS MIN. 6" EACH END
-LINTELS SHALL BE PRIMED TO "OSIC/CPMA 2-0"
-ORIENT ANGLES LONG LEG VERT.
-MAX. 1" BRICK OVERHANG
-WEEP HOLES @ 56" O.C. MAX

- SB. SOLID BEARING (GIRDE WIDTH AS SUPPORTED MEMBER)
PL. CONCENTRATED POINT LOAD
FIRE PLACE VENT
DRYER VENT
STOVE VENT
CELLAR VENT
SMOKE ALARM
CARBON MONOXIDE DETECTOR
HOSE BIB
WATERPROOF ELECTRICAL OUTLET
HOOD/CELLAR VENT
DRYER VENT
- ⊙ GAS LINE
● CABLE LINE
☎ PHONE JACK
⊕ CEILING EXHAUST FAN
⊖ PULL CHAIN CLG. LIGHT
⊙ CEILING LIGHT
3 WAY SWITCH
\$ LIGHT SWITCH
⊕ 120 VOLT RECEPTACLE
⊕ 42" ELECTRIC RECEPTACLE (42" OFF FINISH FLOOR)
⊕ FLOOR DRAIN

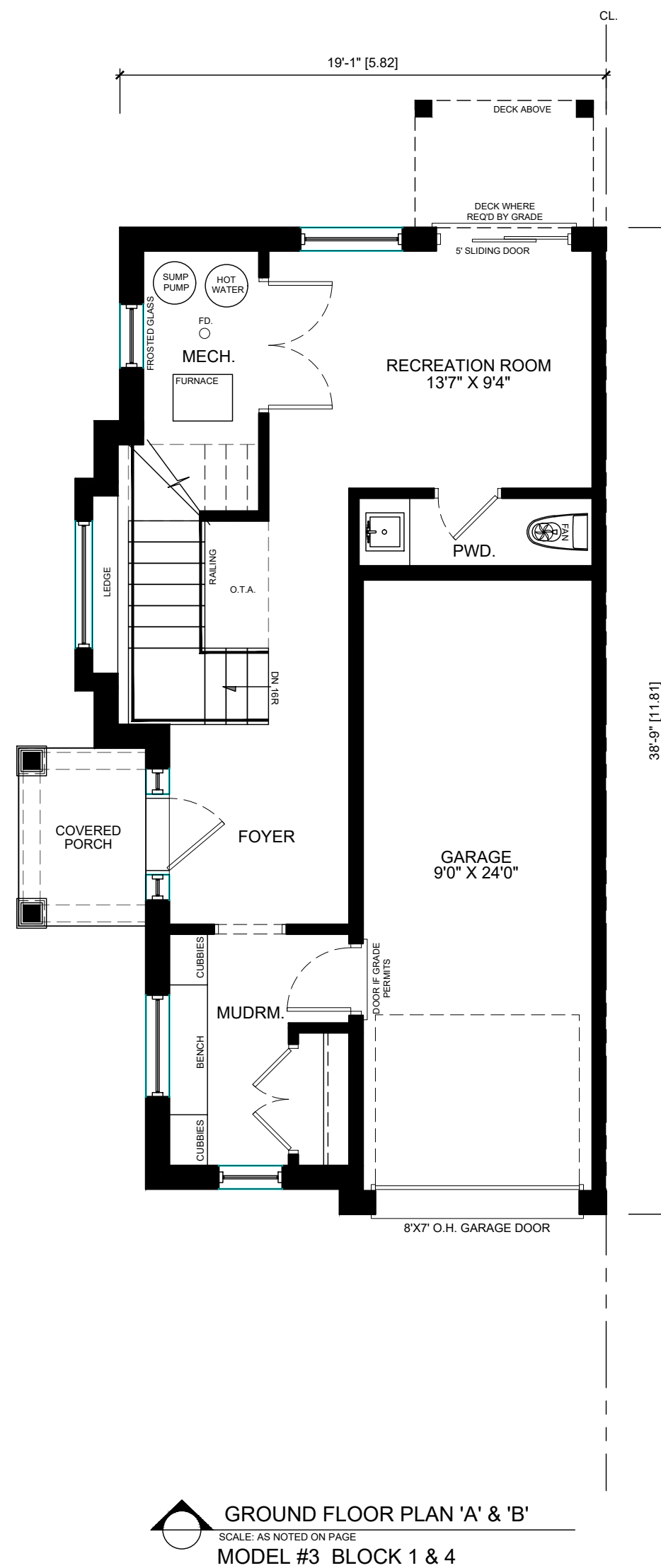
NO:	REVISION :	DATE:	DWN/CHK
1	Issued for review	NOV14/22	dcb dcb
2	Issued for review	NOV30/23	dcb

PROJECT: V22-0677
334&340 ARDAGH ROAD
BARRIE, ON

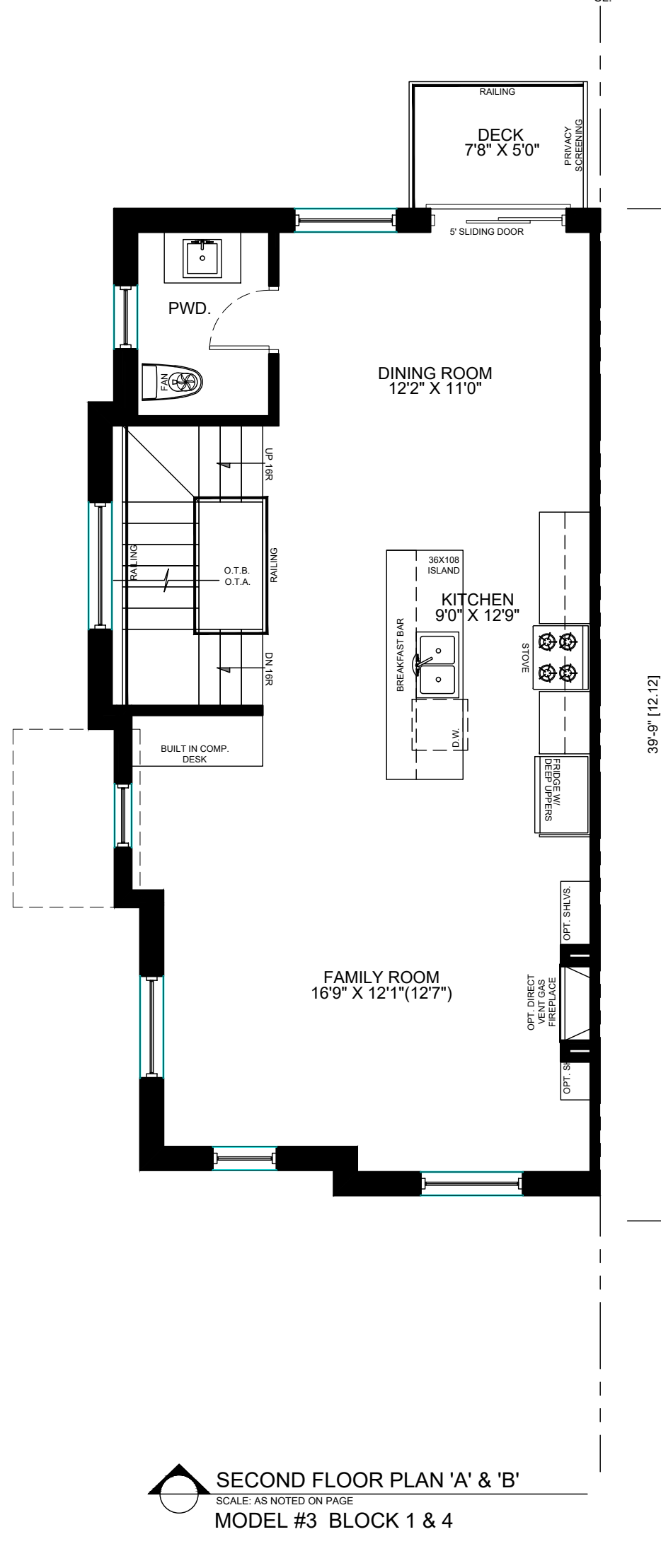
PG. CONTENT: FLOOR PLANS
SCALE: 3/16" = 1'-0"
PAGE: A2



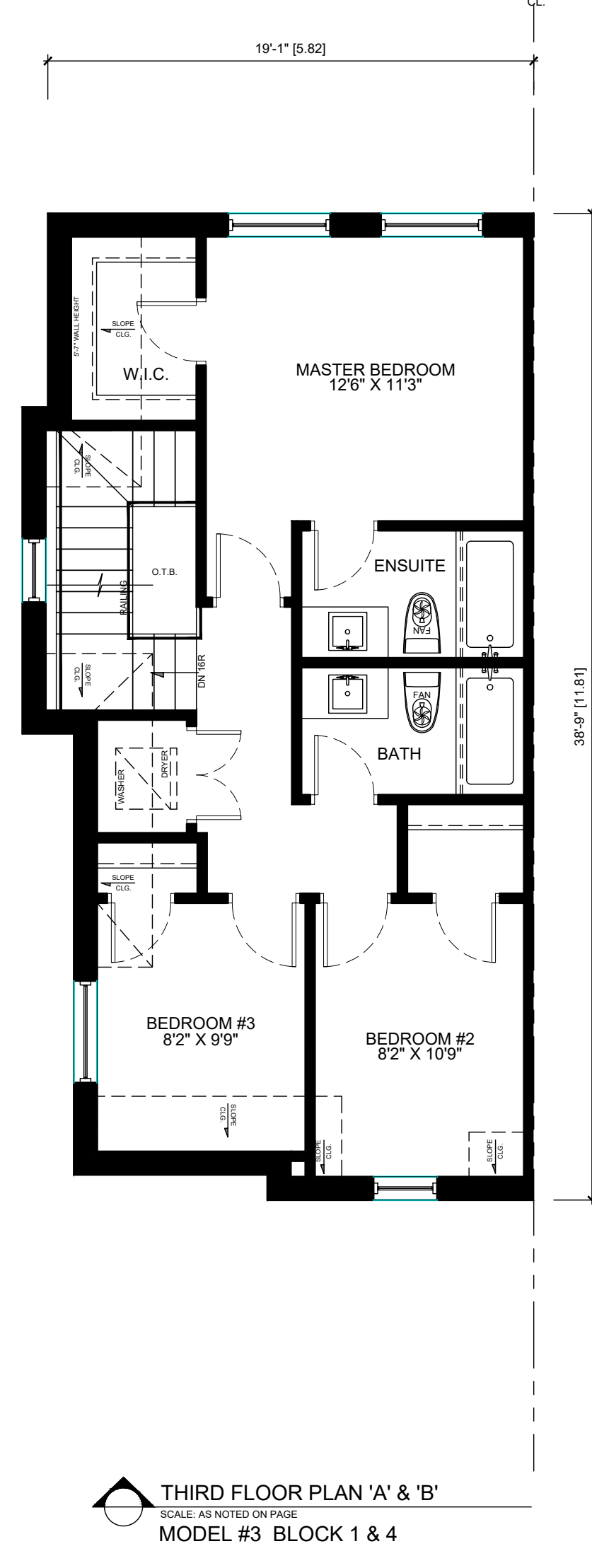
FOUNDATION PLAN 'A' & 'B'
SCALE: AS NOTED ON PAGE
MODEL #3 BLOCK 1 & 4



GROUND FLOOR PLAN 'A' & 'B'
SCALE: AS NOTED ON PAGE
MODEL #3 BLOCK 1 & 4



SECOND FLOOR PLAN 'A' & 'B'
SCALE: AS NOTED ON PAGE
MODEL #3 BLOCK 1 & 4



THIRD FLOOR PLAN 'A' & 'B'
SCALE: AS NOTED ON PAGE
MODEL #3 BLOCK 1 & 4

AREA CALCULATIONS			
GROUND	#	#2	45.800
SECOND	#	#2	68.003
THIRD	#	#2	67.645
	#	#2	2.223
TOTAL	#	#2	178.925
FIN. INCREMENT	#	#2	0.000
TOTAL	#	#2	178.925
COVERAGE CALCULATIONS			
GROUND	#	#2	45.800
GARAGE	#	#2	22.110
FRONT PORCH	#	#2	3.252
REAR PORCH	#	#2	0.000
CON. W/ PORCH	#	#2	67.510
CON. W/ PORCH	#	#2	71.345

Preliminary
(Not for Construction)

*CONSTRUCTION NOTES ARE THE PROPERTY OF VULCAN DESIGN INC. AND MAY NOT BE DUPLICATED OR COPIED WITH OUT THE WRITTEN CONSENT OF VULCAN DESIGN INC.
*ANY SUBSTITUTED MATERIALS TO NOTES STATED SHALL CONFORM TO O.B.C. REGULATIONS AND MANUFACTURES SPECIFICATIONS SHALL BE SUPPLIED BY BUILDER
**ONLY HEX NOTES IDENTIFIED ON PLANS / ELEVATIONS SHALL APPLY
*NOTES / CONSTRUCTION TO CONFORM TO 2012 ONTARIO BUILDING CODE

VULCAN DESIGN INC.
Professional Service, Exceptional Value

35 MCDONALD STREET
ALLISTON, ON L9R 1J5
PH: 416-885-5200



EMAIL: dberry@vulcandesigninc.com
CONTACT PERSON: DANIEL BERRY

BCIN DECLARATION:

I DANIEL BERRY DECLARE THAT I HAVE REVIEWED & TAKE DESIGN RESPONSIBILITY FOR THE DESIGN WORK UNDER DIVISION C, PART 3 SECTION 3.2 OF THE ONTARIO BUILDING CODE. I AM QUALIFIED AND THE FIRM IS REGISTERED IN THE APPROPRIATE CATEGORIES.
FIRM BCIN: 36501
DESIGNER BCIN: 21107

SIGNATURE: _____ DATE: _____

LEGEND / LINTELS:

LINTELS:

WOOD
W1 2/2"x8"
W2 2/2"x10"
W3 2/2"x12"
W4 3/2"x8"
W5 3/2"x10"
W6 3/2"x12"

LVL (2.0E)

2-LVL 7 2-1 3/4" X 7-1/4"
3-LVL 7 3-1 3/4" X 7-1/4"
2-LVL 9 2-1 3/4" X 9-1/2"
3-LVL 9 3-1 3/4" X 9-1/2"
2-LVL 11 2-1 3/4" X 11-7/8"
3-LVL 11 3-1 3/4" X 11-7/8"
2-LVL 14 2-1 3/4" X 14"
3-LVL 14 3-1 3/4" X 14"

U.N.O. FASTEN MULTIPLE PLY LVL'S

(2) ROWS @ 12" O.C. 3" (16d) NAILS

OR SDW SCREWS

STEEL LINTELS

S1 <6'-0" L3-1/2" X 3-1/2" - 1/4"
S2 <6'-0" L4" X 3-1/2" X 1/4"
S3 <8'-0" L5" X 3-1/2" X 5/16"
S4 <10'-0" L6" X 3-1/2" X 5/16"
-BEAR LINTELS MIN. 6" EACH END
-LINTELS SHALL BE PRIMED TO "OSIC/PMMA-2-3"
-ORIENT ANGLES LONG LEG VERT.
-MAX. 1" BRICK OVERHANG
-WEEP HOLES @ 56" O.C. MAX

SOLID BEARING

(NAME WITH AS SUPPORTED MEMBER)

CONCENTRATED POINT LOAD

FIRE PLACE VENT

DRYER VENT

STOVE VENT

CELLAR VENT

SMOKE ALARM

CARBON MONOXIDE DETECTOR

HOSE BIB

WATERPROOF ELECTRICAL OUTLET

HOOD/CELLAR VENT

DRYER VENT

GAS LINE

CABLE LINE

PHONE JACK

CEILING EXHAUST FAN

PULL CHAIN CLG. LIGHT

CEILING LIGHT

3 WAY SWITCH

LIGHT SWITCH

120 VOLT RECEPTACLE

ELECTRIC RECEPTACLE (42" OFF FINISH FLOOR)

FLOOR DRAIN

PROJECT: V22-0677

334&340 ARDAGH ROAD
BARRIE, ON

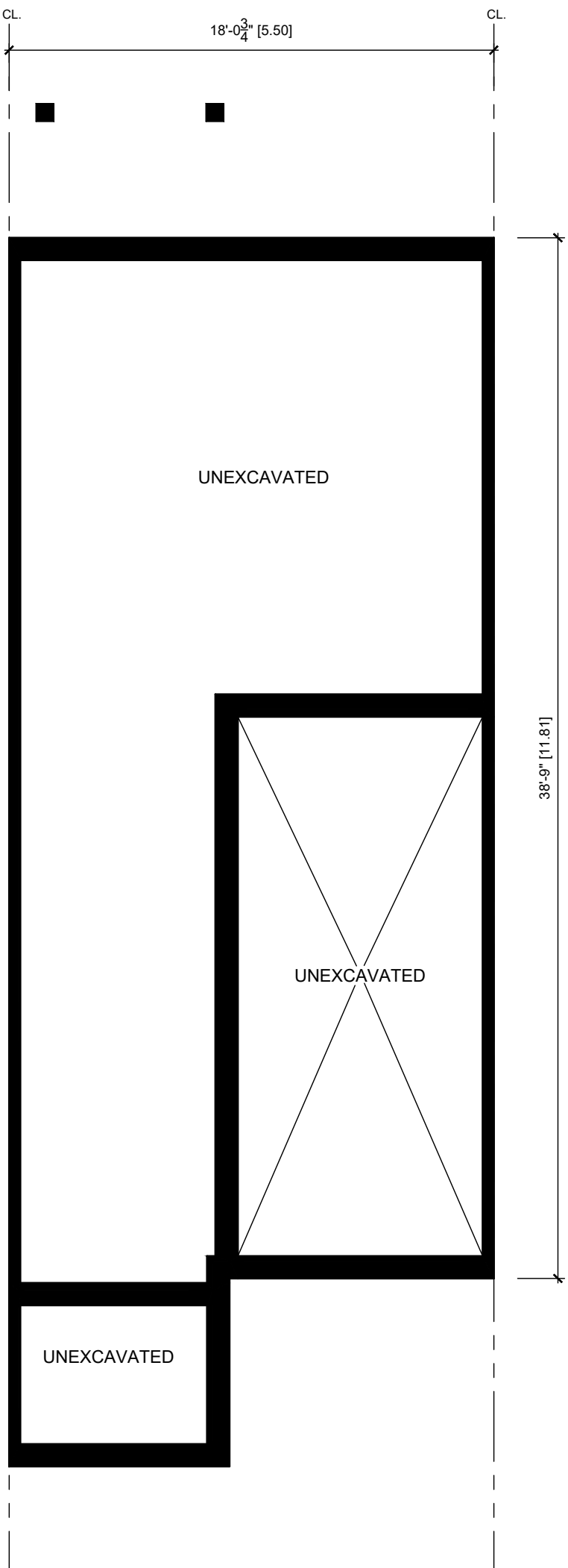
PG. CONTENT:

FLOOR PLANS

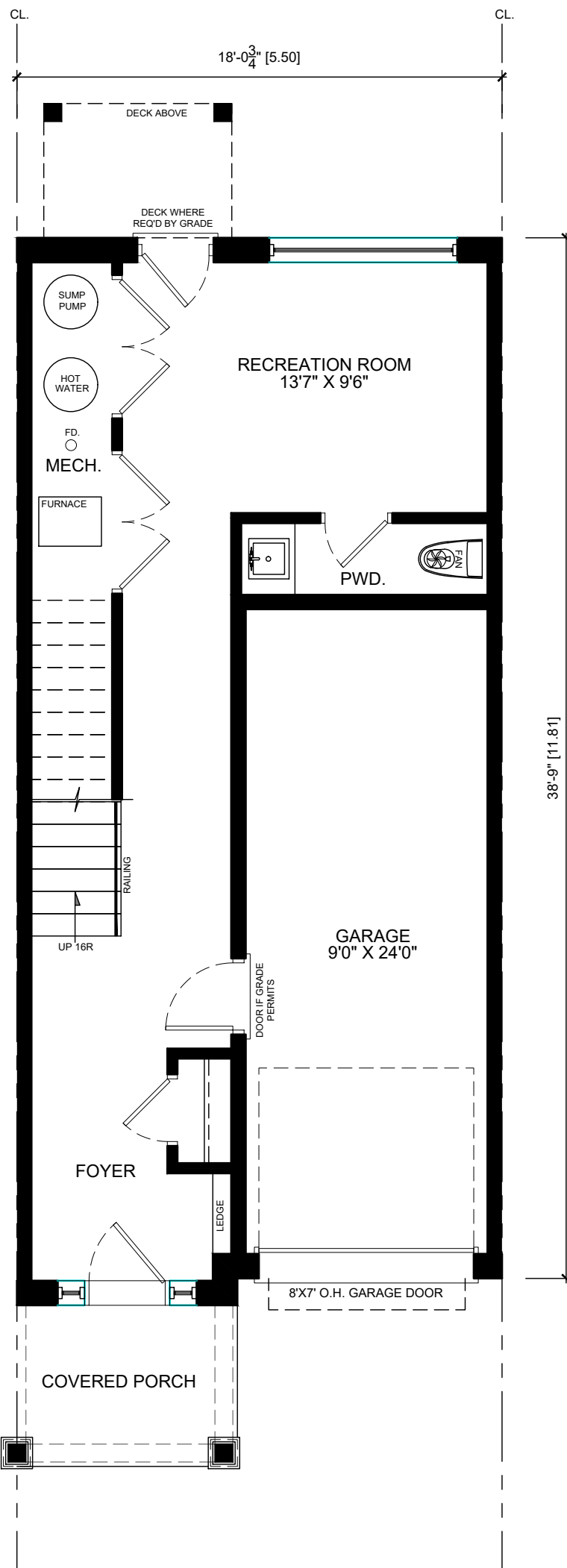
SCALE: 3/16" = 1'-0"

PAGE:

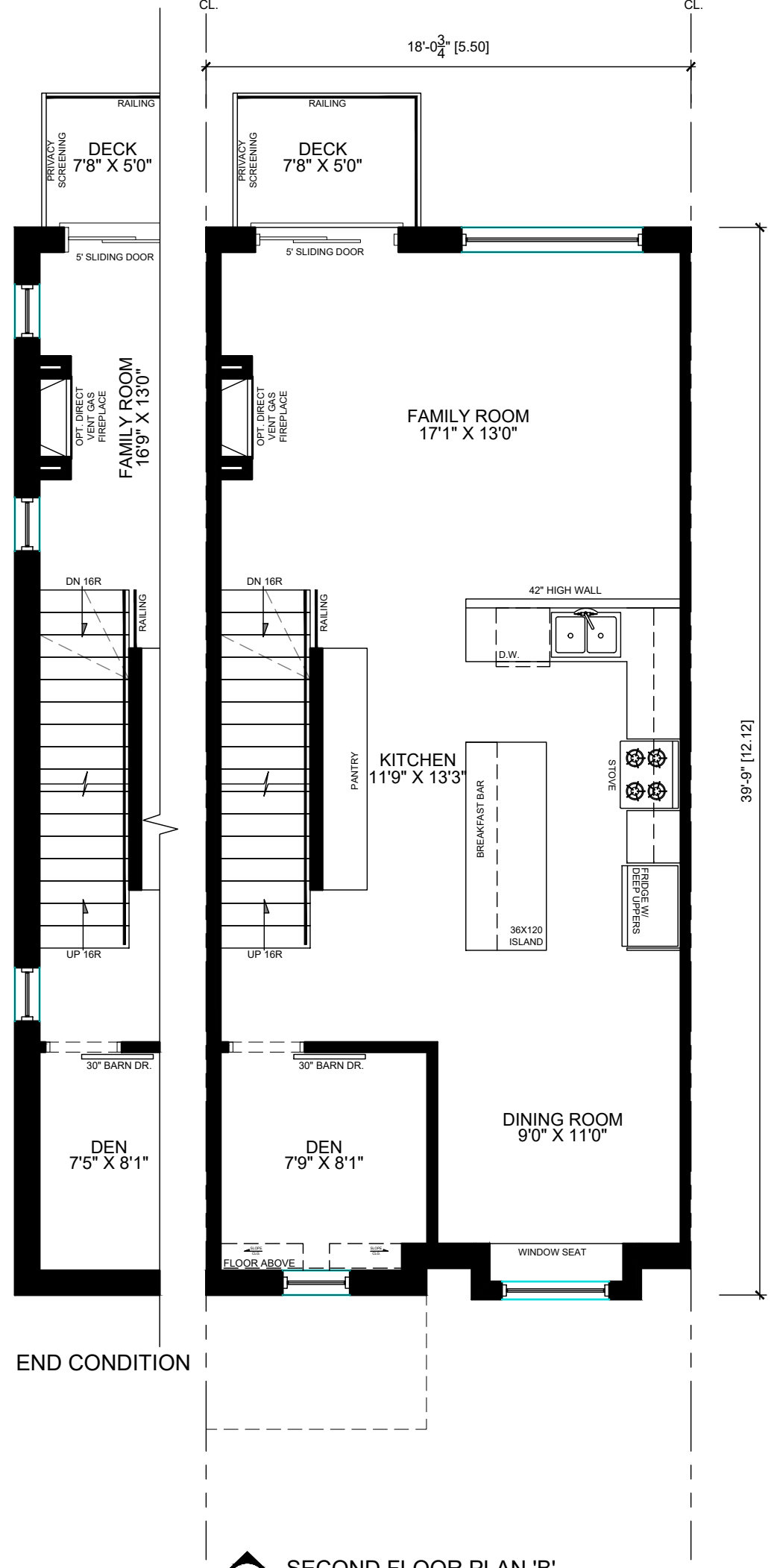
A3



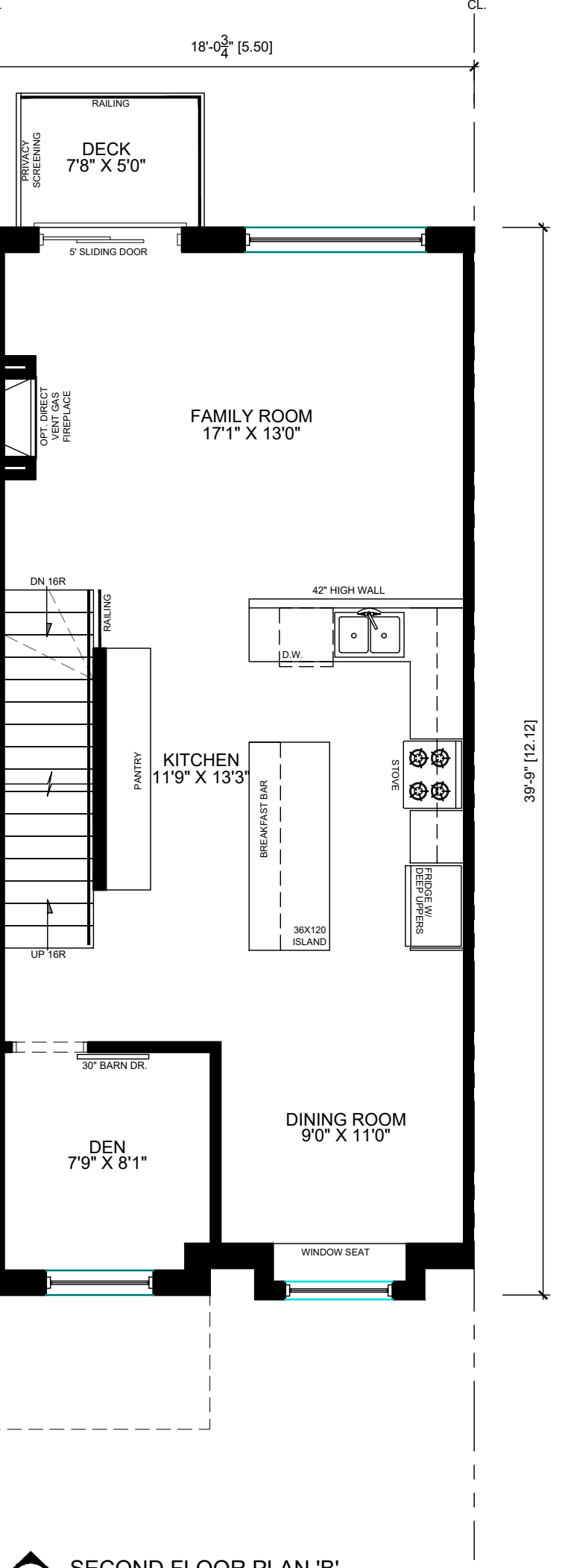
FOUNDATION PLAN 'B'
MODEL #2 BLOCK 2 & 4
SCALE: AS NOTED ON PAGE



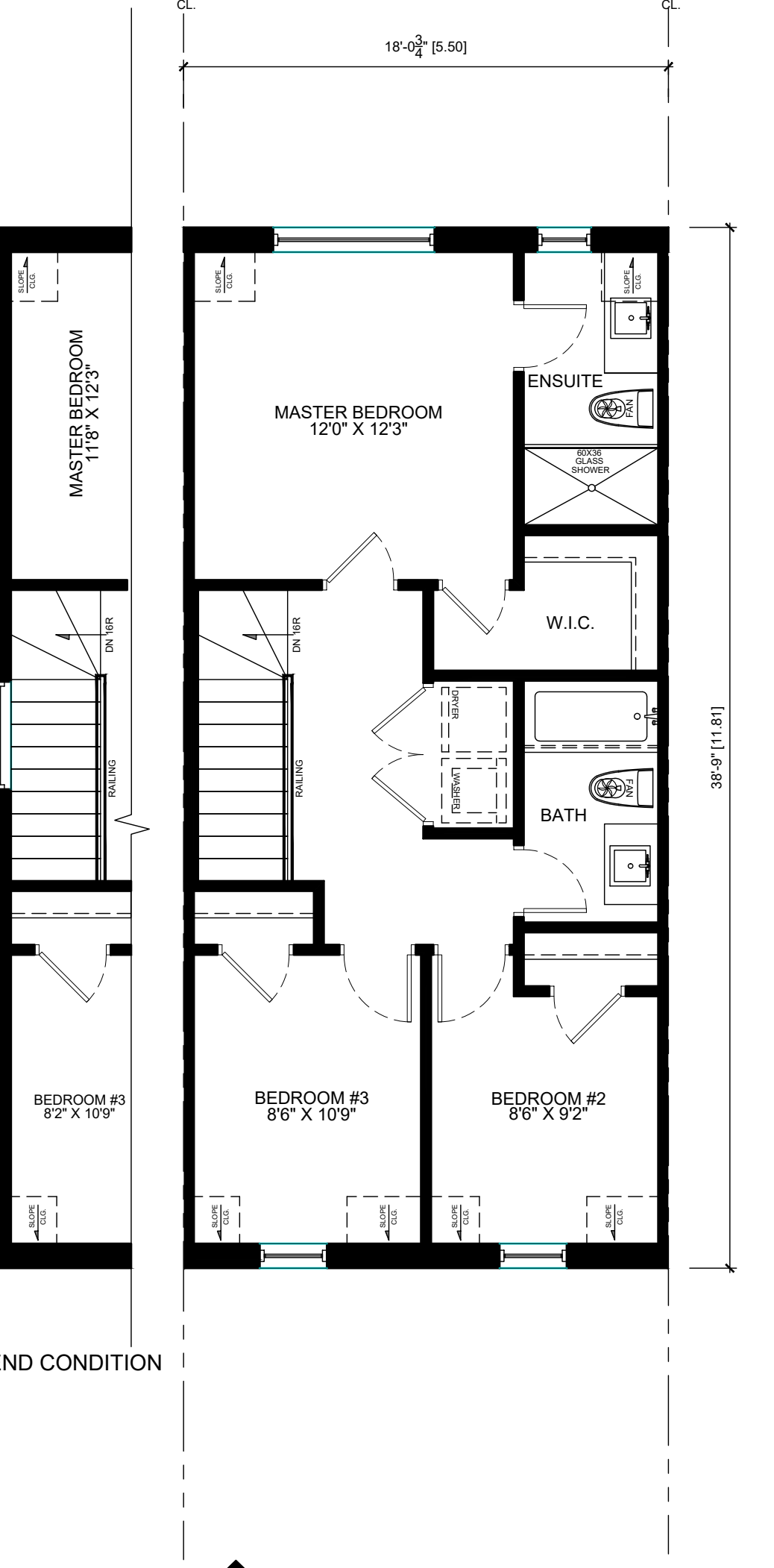
GROUND FLOOR PLAN 'B'
MODEL #2 BLOCK 2 & 4
SCALE: AS NOTED ON PAGE



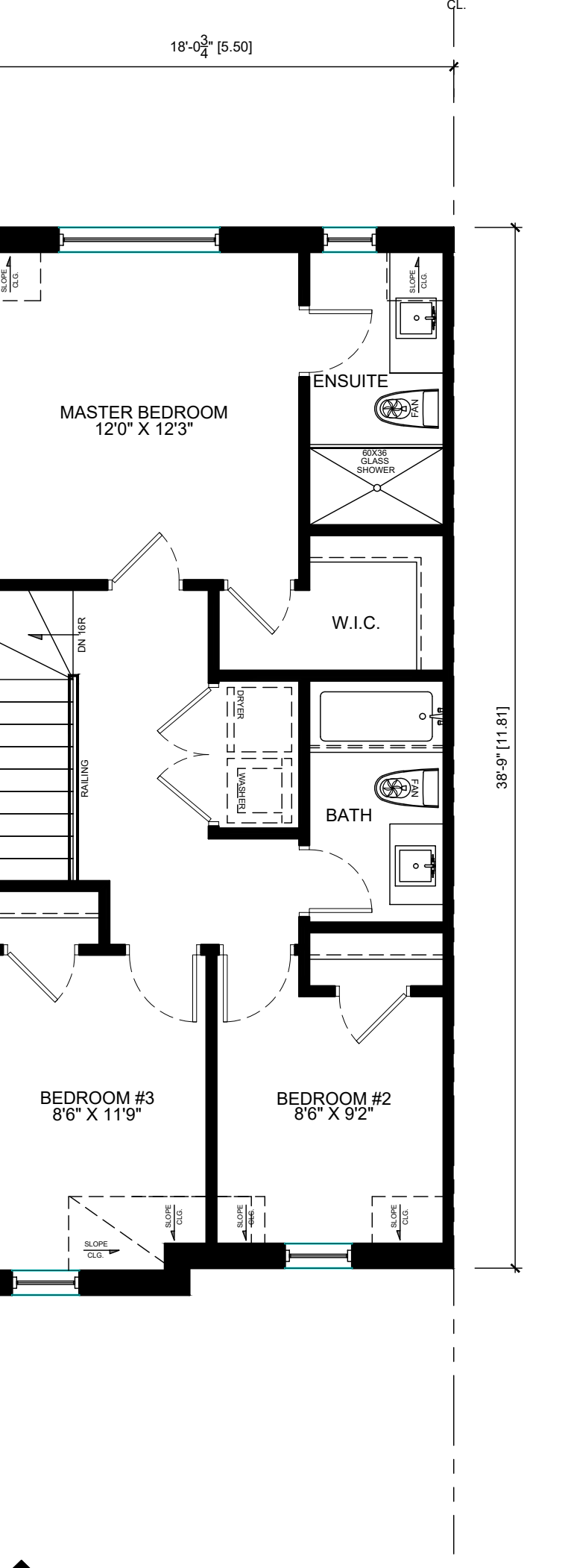
SECOND FLOOR PLAN 'B'
MODEL #2 BLOCK 2 & 4
SCALE: AS NOTED ON PAGE



SECOND FLOOR PLAN 'B'
MODEL #2A BLOCK 2 & 4
SCALE: AS NOTED ON PAGE



THIRD FLOOR PLAN 'B'
MODEL #2 BLOCK 2 & 4
SCALE: AS NOTED ON PAGE



THIRD FLOOR PLAN 'B'
MODEL #2A BLOCK 2 & 4
SCALE: AS NOTED ON PAGE

MODEL #2

AREA CALCULATIONS			
GROUND	#	470	#2 43,663
SECOND	#	715	#2 66,424
THIRD	#	699	#2 64,837
- 0.1A	#	0	#2 0.000
TOTAL	#	1884	#2 175,924
FIN. BREAKOUT	#	0	#2 0.000
TOTAL	#	1884	#2 175,924
COVERAGE CALCULATIONS			
GROUND	#	470	#2 43,663
GARAGE	#	237	#2 22,017
FRONT PORCH	#	49	#2 4,552
REAR PORCH	#	0	#2 0.000
CON. W/O PORCH	#	707	#2 65,660
CON. W/ PORCH	#	756	#2 70,232

MODEL #2A

AREA CALCULATIONS			
GROUND	#	470	#2 43,663
SECOND	#	715	#2 66,424
THIRD	#	708	#2 65,713
- 0.1A	#	0	#2 0.000
TOTAL	#	1893	#2 175,800
FIN. BREAKOUT	#	0	#2 0.000
TOTAL	#	1893	#2 175,800
COVERAGE CALCULATIONS			
GROUND	#	470	#2 43,663
GARAGE	#	237	#2 22,017
FRONT PORCH	#	49	#2 4,552
REAR PORCH	#	0	#2 0.000
CON. W/O PORCH	#	707	#2 65,660
CON. W/ PORCH	#	756	#2 70,232

Preliminary
(Not for Construction)

*CONSTRUCTION NOTES ARE THE PROPERTY OF VULCAN DESIGN INC. AND MAY NOT BE DUPLICATED OR COPIED WITH OUT THE WRITTEN CONSENT OF VULCAN DESIGN INC.
*ANY SUBSTITUTE MATERIALS TO NOTES STATED SHALL CONFORM TO O.B.C. REGULATIONS AND MANUFACTURES SPECIFICATIONS SHALL BE SUPPLIED BY BUILDER
**ONLY HEX NOTES IDENTIFIED ON PLANS / ELEVATIONS SHALL APPLY
*NOTES / CONSTRUCTION TO CONFORM TO 2012 ONTARIO BUILDING CODE

VULCAN DESIGN INC.
Professional Service, Exceptional Value

35 MCDONALD STREET
ALLISTON, ON L9R 1J5
PH: 416-885-5200



EMAIL: dberry@vulcandesigninc.com
CONTACT PERSON: DANIEL BERRY

BCIN DECLARATION:

I DANIEL BERRY DECLARE THAT I HAVE REVIEWED & TAKE DESIGN RESPONSIBILITY FOR THE DESIGN WORK UNDER DIVISION C, PART 3 SECTION 3.2 OF THE ONTARIO BUILDING CODE. I AM QUALIFIED AND THE FIRM IS REGISTERED IN THE APPROPRIATE CATEGORIES.

FIRM BCIN: 36501

DESIGNER BCIN: 21107

SIGNATURE: _____ DATE: _____

LEGEND / LINTELS:

LINTELS:

WOOD

W1 2/2"x8"

W2 2/2"x10"

W3 2/2"x12"

W4 3/2"x8"

W5 3/2"x10"

W6 3/2"x12"

LVL (2.0E)

2-LVL 7 2-1 3/4" X 7-1/4"

3-LVL 7 3-1 3/4" X 7-1/4"

2-LVL 9 2-1 3/4" X 9-1/2"

3-LVL 9 3-1 3/4" X 9-1/2"

2-LVL 11 2-1 3/4" X 11-7/8"

3-LVL 11 3-1 3/4" X 11-7/8"

2-LVL 14 2-1 3/4" X 14"

3-LVL 14 3-1 3/4" X 14"

U.N.O. FASTEN MULTIPLE PLY LVL'S

(2) ROWS @ 12" O.C. 3" (16d) NAILS

OR SDW SCREWS

STEE LINTELS

S1 <4'-0" L3-1/2" X 3-1/2" - 1/4"

S2 <6'-0" L4" X 3-1/2" X 1/4"

S3 <8'-0" L5" X 3-1/2" X 5/16"

S4 <10'-0" L6" X 3-1/2" X 5/16"

-BEAR LINTELS MIN. 6" EACH END

-LINTELS SHALL BE PRIMED TO "OSICOPMA 2-3"

-ORIENT ANGLES LONG LEG VERT.

-MAX. 1" BRICK OVERHANG

-WEEP HOLES @ 56" O.C. MAX

SOLID BEARING (SAME WIDTH AS SUPPORTED MEMBER)

CONCENTRATED POINT LOAD

FIRE PLACE VENT

DRYER VENT

STOVE VENT

CELLAR VENT

SMOKE ALARM

CARBON MONOXIDE DETECTOR

HOSE BIB

WATERPROOF ELECTRICAL OUTLET

HOOD/CELLAR VENT

DRYER VENT

ABBREVIATIONS:

DJ DOUBLE JOIST

TJ TRIPLE JOIST

GT GIRDER TRUSS

DO DO OVER

RJ ROOF JOISTS

STL STEEL

SB SOLID BEARING (SEE "FRAMING REQ.'S")

PL POINT LOAD

(FL) FLUSH

(DR.) DROPPED

FG FIXED GLASS

FDTN FOUNDATION

BG BLACK GLASS

JT JACK TRUSS

U/S UNDERSIDE

T/O TOP OF

FG FIXED GLASS

CLG CEILING

BBFM BEAM BY FLOOR MANUFACTURE

GAS LINE

CABLE LINE

PHONE JACK

CEILING EXHAUST FAN

PULL CHAIN CLG. LIGHT

CEILING LIGHT

3 WAY SWITCH

LIGHT SWITCH

120 VOLT RECEPTACLE

ELECTRIC RECEPTACLE (42" OFF FINISH FLOOR)

FLOOR DRAIN

NO.	REVISION:	DATE:	DWN/CHK
1	Issued for review	MAY04/23	dcb dcb
2	Issued for review	NOV30/23	dcb

PROJECT: V22-0677

334&340 ARDAGH ROAD
BARRIE, ON

PG. CONTENT:

ELEVATIONS

SCALE: 3/16" = 1'-0"

PAGE:

A4

Preliminary
(Not for Construction)

*CONSTRUCTION NOTES ARE THE PROPERTY OF VULCAN DESIGN INC. AND MAY NOT BE DUPLICATED OR COPIED WITH OUT THE WRITTEN CONSENT OF VULCAN DESIGN INC.
*ANY SUBSTITUTE MATERIALS TO NOTES STATED SHALL CONFORM TO O.B.C. REGULATIONS AND MANUFACTURES SPECIFICATIONS SHALL BE SUPPLIED BY BUILDER
**ONLY HEX NOTES IDENTIFIED ON PLANS / ELEVATIONS SHALL APPLY
*NOTES / CONSTRUCTION TO CONFORM TO 2012 ONTARIO BUILDING CODE

VULCAN DESIGN INC.
Professional Service, Exceptional Value

35 MCDONALD STREET
ALLISTON, ON L9R 1J5
PH: 416-885-5200
EMAIL: dberry@vulcandesigninc.com
CONTACT PERSON: DANIEL BERRY



BCIN DECLARATION:

I DANIEL BERRY DECLARE THAT I HAVE REVIEWED & TAKE DESIGN RESPONSIBILITY FOR THE DESIGN WORK UNDER DIVISION C, PART 3 SECTION 3.2 OF THE ONTARIO BUILDING CODE. I AM QUALIFIED AND THE FIRM IS REGISTERED IN THE APPROPRIATE CATEGORIES.
FIRM BCIN: 36501
DESIGNER BCIN: 21107

SIGNATURE: _____ DATE: _____

LEGEND / LINTELS:

LINTELS:

WOOD
W1 2/2"x8"
W2 2/2"x10"
W3 2/2"x12"
W4 3/2"x8"
W5 3/2"x10"
W6 3/2"x12"
LVL (2.0E)
2-LVL 7 2-1 3/4" X 7-1/4"
3-LVL 7 3-1 3/4" X 7-1/4"
2-LVL 9 2-1 3/4" X 9-1/2"
3-LVL 9 3-1 3/4" X 9-1/2"
2-LVL 11 2-1 3/4" X 11-7/8"
3-LVL 11 3-1 3/4" X 11-7/8"
2-LVL 14 2-1 3/4" X 14"
3-LVL 14 3-1 3/4" X 14"
U.N.O. FASTEN MULTIPLE PLY LVL'S
(2) ROWS @ 12" O.C. 3 1/2" (16d) NAILS
OR SDW SCREWS

ABBREVIATIONS:

DJ DOUBLE JOIST
TJ TRIPLE JOIST
GT GIRDER TRUSS
DO DO OVER
RJ ROOF JOISTS
STL STEEL
SB SOLID BEARING
(SEE FRAMING REQ.'S)
PL POINT LOAD
(FL) FLUSH
(DR.) DROPPED
FG FIXED GLASS
FDTN FOUNDATION

STEEL LINTELS

S1 <4'-0" L3-1/2" X 3-1/2" - 1/4"
S2 <6'-0" L4" X 3-1/2" X 1/4"
S3 <8'-0" L5" X 3-1/2" X 5/16"
S4 <10'-0" L6" X 3-1/2" X 5/16"
-BEAR LINTELS MIN. 6" EACH END
-LINTELS SHALL BE PRIMED TO "DISCIPINA 2-3"
-ORIENT ANGLES LONG LEG VERT.
-MAX. 1" BRICK OVERHANG
-WEEP HOLES @ 56" O.C. MAX

SR SOLID BEARING
(SAME WIDTH AS SUPPORTED MEMBER)
PL CONCENTRATED POINT LOAD
FAN FIRE PLACE VENT
DRYER VENT
STOVE VENT
CELLAR VENT
SMOKE ALARM
CARBON MONOXIDE DETECTOR
HOSE BIB
WATERPROOF ELECTRICAL OUTLET
HOOD/CELLAR VENT
DRYER VENT
GAS LINE
CABLE LINE
PHONE JACK
CEILING EXHAUST FAN
P.C. PULL CHAIN CLG. LIGHT
CEILING LIGHT
3 WAY SWITCH
LIGHT SWITCH
120 VOLT RECEPTACLE
ELECTRIC RECEPTACLE
(42" OFF FINISH FLOOR)
FLOOR DRAIN

NO.	REVISION :	DATE:	DWN/CHK
1	Issued for review	MAY04/23	dcb dcb
2	Issued for review	NOV30/23	dcb

PROJECT: V22-0677
334&340 ARDAGH ROAD
BARRIE, ON

PG. CONTENT: ELEVATIONS
SCALE: 3/16" = 1'-0"

PAGE: A5



*CONSTRUCTION NOTES ARE THE PROPERTY OF VULCAN DESIGN INC. AND MAY NOT BE DUPLICATED OR COPIED WITH OUT THE WRITTEN CONSENT OF VULCAN DESIGN INC.
*ANY SUBSTITUTE MATERIALS TO NOTES STATED SHALL CONFORM TO O.B.C. REGULATIONS AND MANUFACTURES SPECIFICATIONS SHALL BE SUPPLIED BY BUILDER
**ONLY HEX NOTES IDENTIFIED ON PLANS / ELEVATIONS SHALL APPLY
*NOTES / CONSTRUCTION TO CONFORM TO 2012 ONTARIO BUILDING CODE

VULCAN DESIGN INC.
Professional Service, Exceptional Value

35 MCDONALD STREET
ALLISTON, ON L9R 1J5
PH: 416-885-5200



EMAIL: dberry@vulcandesigninc.com
CONTACT PERSON: DANIEL BERRY

BCIN DECLARATION:

I DANIEL BERRY DECLARE THAT I HAVE REVIEWED & TAKE DESIGN RESPONSIBILITY FOR THE DESIGN WORK UNDER DIVISION C, PART 3 SECTION 3.2 OF THE ONTARIO BUILDING CODE. I AM QUALIFIED AND THE FIRM IS REGISTERED IN THE APPROPRIATE CATEGORIES.

FIRM BCIN: 36501
DESIGNER BCIN: 21107

SIGNATURE: _____ DATE: _____



LEGEND / LINTELS:

LINTELS:

WOOD

W1 2/2"x8"

W2 2/2"x10"

W3 2/2"x12"

W4 3/2"x8"

W5 3/2"x10"

W6 3/2"x12"

LVL (2.0E)

2-LVL 7 2-1 3/4" X 7-1/4"

3-LVL 7 3-1 3/4" X 7-1/4"

2-LVL 9 2-1 3/4" X 9-1/2"

3-LVL 9 3-1 3/4" X 9-1/2"

2-LVL 11 2-1 3/4" X 11-7/8"

3-LVL 11 3-1 3/4" X 11-7/8"

2-LVL 14 2-1 3/4" X 14"

3-LVL 14 3-1 3/4" X 14"

U.N.O. FASTEN MULTIPLE PLY LVL'S

(2) ROWS @ 12" O.C. 3" (16d) NAILS

OR SDW SCREWS

STEEL LINTELS

S1 <4'-0" L3-1/2" X 3-1/2" - 1/4"

S2 <6'-0" L4" X 3-1/2" X 1/4"

S3 <8'-0" L5" X 3-1/2" X 5/16"

S4 <10'-0" L6" X 3-1/2" X 5/16"

-BEAR LINTELS MIN. 6" EACH END

-LINTELS SHALL BE PRIMED TO "OSICOPMA 2-0"

-ORIENT ANGLES LONG LEG VERT.

-MAX. 1" BRICK OVERHANG

-WEEP HOLES @ 56" O.C. MAX

SOLID BEARING (SAME WIDTH AS SUPPORTED MEMBER)

CONCENTRATED POINT LOAD

FIRE PLACE VENT

DRYER VENT

STOVE VENT

CELLAR VENT

SMOKE ALARM

CARBON MONOXIDE DETECTOR

HOSE BIB

WATERPROOF ELECTRICAL OUTLET (42" OFF FINISH FLOOR)

HOOD/CELLAR VENT

DRYER VENT

ABBREVIATIONS:

DJ DOUBLE JOIST

TJ TRIPLE JOIST

GT GIRDER TRUSS

DO DO OVER

RJ ROOF JOISTS

STL STEEL

SB SOLID BEARING (SEE FRAMING REQ.'S)

PL POINT LOAD

(FL) FLUSH

(DR) DROPPED

FG FIXED GLASS

FDTN FOUNDATION

BG BLACK GLASS

JT JACK TRUSS

U/S UNDERSIDE

T/O TOP OF

FG FIXED GLASS

CLG CEILING

BBFM BEAM BY FLOOR MANUFACTURE

GAS LINE

CABLE LINE

PHONE JACK

CEILING EXHAUST FAN

PULL CHAIN CLG. LIGHT

CEILING LIGHT

3 WAY SWITCH

LIGHT SWITCH

120 VOLT RECEPTACLE

ELECTRIC RECEPTACLE (42" OFF FINISH FLOOR)

FLOOR DRAIN

NO.	REVISION :	DATE:	DWN/CHK
1	Issued for review	MAY04/23	dc b dcb
2	Issued for review	NOV30/23	dc b

PROJECT: V22-0677

334&340 ARDAGH ROAD
BARRIE, ON

PG. CONTENT:

ELEVATIONS

SCALE: 3/16" = 1'-0"

PAGE:

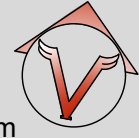
A6

Preliminary
(Not for Construction)

*CONSTRUCTION NOTES ARE THE PROPERTY OF VULCAN DESIGN INC. AND MAY NOT BE DUPLICATED OR COPIED WITH OUT THE WRITTEN CONSENT OF VULCAN DESIGN INC.
*ANY SUBSTITUTE MATERIALS TO NOTES STATED SHALL CONFORM TO O.B.C. REGULATIONS AND MANUFACTURES SPECIFICATIONS SHALL BE SUPPLIED BY BUILDER
**ONLY HEX NOTES IDENTIFIED ON PLANS / ELEVATIONS SHALL APPLY
*NOTES / CONSTRUCTION TO CONFORM TO 2012 ONTARIO BUILDING CODE

VULCAN DESIGN INC.
Professional Service, Exceptional Value

35 MCDONALD STREET
ALLISTON, ON L9R 1J5
PH: 416-885-5200
EMAIL: dberry@vulcandesigninc.com
CONTACT PERSON: DANIEL BERRY



BCIN DECLARATION:

I DANIEL BERRY DECLARE THAT I HAVE REVIEWED & TAKE DESIGN RESPONSIBILITY FOR THE DESIGN WORK UNDER DIVISION C, PART 3 SECTION 3.2 OF THE ONTARIO BUILDING CODE. I AM QUALIFIED AND THE FIRM IS REGISTERED IN THE APPROPRIATE CATEGORIES.
FIRM BCIN: 36501
DESIGNER BCIN: 21107

SIGNATURE: _____ DATE: _____

LEGEND / LINTELS:

LINTELS:

WOOD
W1 2/2"x8"
W2 2/2"x10"
W3 2/2"x12"
W4 3/2"x8"
W5 3/2"x10"
W6 3/2"x12"

LVL (2.0E)

2-LVL 7 2-1 3/4" X 7-1/4"
3-LVL 7 3-1 3/4" X 7-1/4"
2-LVL 9 2-1 3/4" X 9-1/2"
3-LVL 9 3-1 3/4" X 9-1/2"
2-LVL 11 2-1 3/4" X 11-7/8"
3-LVL 11 3-1 3/4" X 11-7/8"
2-LVL 14 2-1 3/4" X 14"
3-LVL 14 3-1 3/4" X 14"

U.N.O. FASTEN MULTIPLE PLY LVL'S
(2) ROWS @ 12" O.C. 3 1/2" (16d) NAILS
OR SDW SCREWS

STEEL LINTELS

S1 <4'-0" L3-1/2" X 3-1/2" - 1/4"
S2 <6'-0" L4" X 3-1/2" X 1/4"
S3 <8'-0" L5" X 3-1/2" X 5/16"
S4 < 10'-0" L6" X 3-1/2" X 5/16"
-BEAR LINTELS MIN. 6" EACH END
-LINTELS SHALL BE PRIMED TO "OSBOCORPMA-2-3"
-ORIENT ANGLES LONG LEG VERT.
-MAX. 1" BRICK OVERHANG
-WEEP HOLES @ 56" O.C. MAX

ABBREVIATIONS:

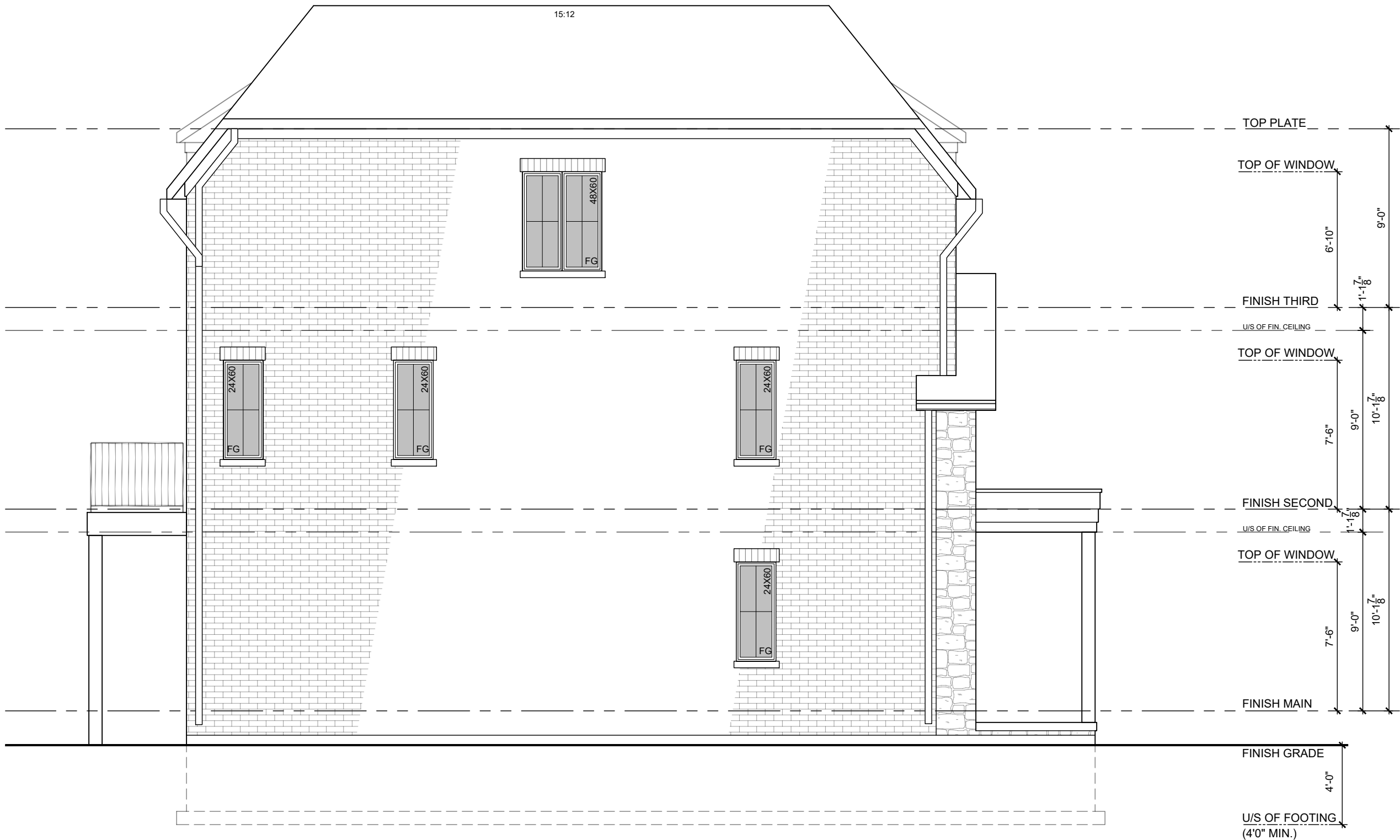
DJ DOUBLE JOIST
TJ TRIPLE JOIST
GT GIRDER TRUSS
'DO' DO OVER
RJ ROOF JOISTS
STL STEEL
SB. SOLID BEARING
(SEE 'FRAMING REQ.'S)
PL. POINT LOAD
(FL.) FLUSH
(DR.) DROPPED
FG. FIXED GLASS
FDTN. FOUNDATION
BG. BLACK GLASS
JT JACK TRUSS
U/S UNDERSIDE
T/O TOP OF
FG. FIXED GLASS
CLG. CEILING
BBFM BEAM BY FLOOR
MANUFACTURE

SR SOLID BEARING
(SAME WIDTH AS SUPPORTED MEMBER)
PL. CONCENTRATED POINT LOAD
FIRE PLACE VENT
DRYER VENT
STOVE VENT
CELLAR VENT
SMOKE ALARM
CARBON MONOXIDE DETECTOR
HOSE BIB
WATERPROOF ELECTRICAL OUTLET
HOOD/CELLAR VENT
DRYER VENT
GAS LINE
CABLE LINE
PHONE JACK
CEILING EXHAUST FAN
PULL CHAIN CLG. LIGHT
CEILING LIGHT
3 WAY SWITCH
LIGHT SWITCH
120 VOLT RECEPTACLE
ELECTRIC RECEPTACLE
(42" OFF FINISH FLOOR)
FLOOR DRAIN

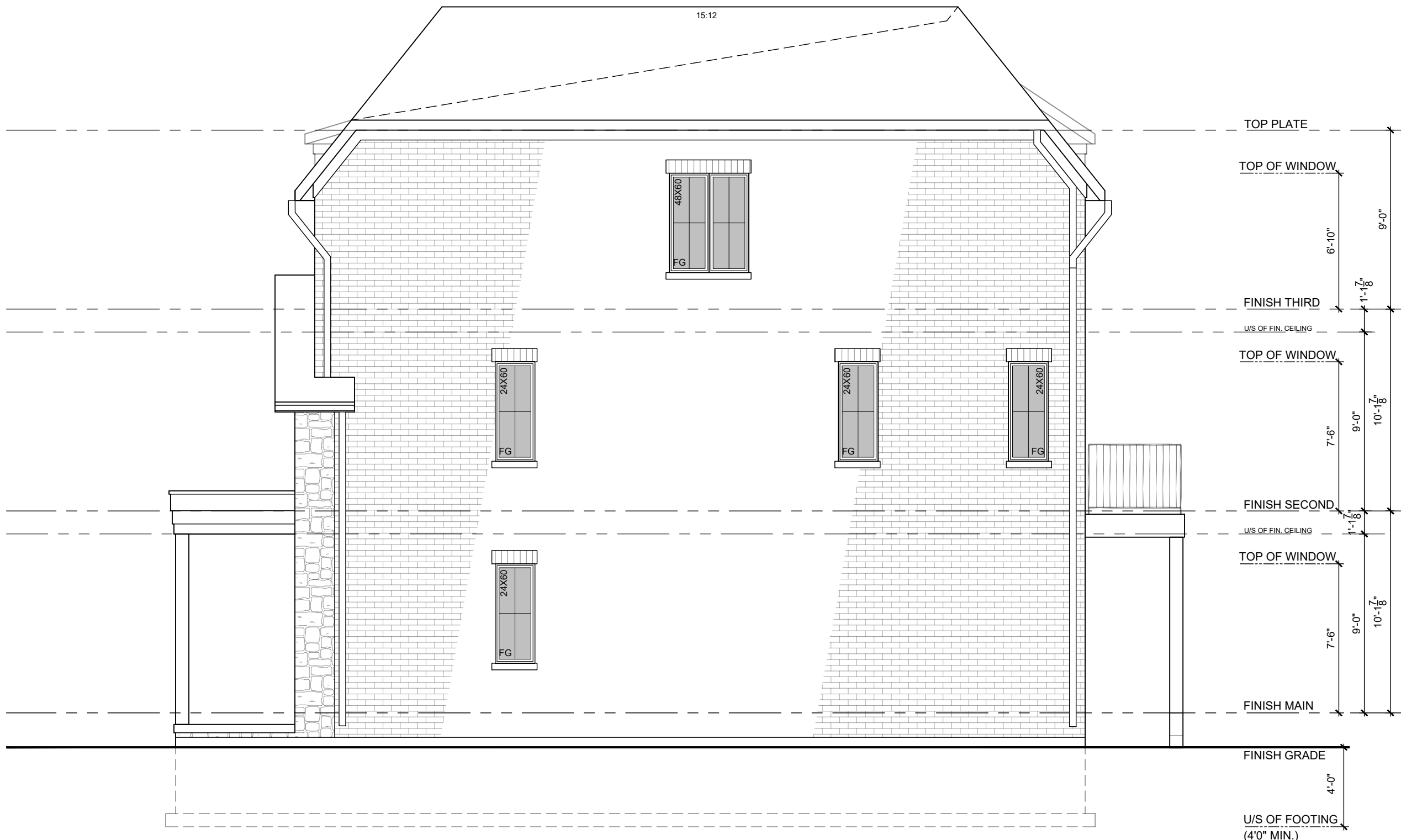
NO.	REVISION :	DATE:	DWN/CHK
1	Issued for review	MAY04/23	dc b dcb
2	Issued for review	NOV30/23	dc b dcb

PROJECT: V22-0677
334&340 ARDAGH ROAD
BARRIE, ON

PG. CONTENT: ELEVATIONS
SCALE: 3/16" = 1'-0"
PAGE: A7



BLOCK 2 TOWNHOUSE
PROPOSED SOUTH ELEVATION 'B'
SCALE AS NOTED ON PAGE
MODEL #2



BLOCK 2 TOWNHOUSE
PROPOSED NORTH ELEVATION 'B'
SCALE AS NOTED ON PAGE
MODEL #2

Preliminary
(Not for Construction)

*CONSTRUCTION NOTES ARE THE PROPERTY OF VULCAN DESIGN INC. AND MAY NOT BE DUPLICATED OR COPIED WITH OUT THE WRITTEN CONSENT OF VULCAN DESIGN INC.
*ANY SUBSTITUTE MATERIALS TO NOTES STATED SHALL CONFORM TO O.B.C. REGULATIONS AND MANUFACTURES SPECIFICATIONS SHALL BE SUPPLIED BY BUILDER
**ONLY HEX NOTES IDENTIFIED ON PLANS / ELEVATIONS SHALL APPLY
**NOTES / CONSTRUCTION TO CONFORM TO 2012 ONTARIO BUILDING CODE

VULCAN DESIGN INC.
Professional Service, Exceptional Value

35 MCDONALD STREET
ALLISTON, ON L9R 1J5
PH: 416-885-5200



EMAIL: dberry@vulcandesigninc.com
CONTACT PERSON: DANIEL BERRY

BCIN DECLARATION:

I DANIEL BERRY DECLARE THAT I HAVE REVIEWED & TAKE DESIGN RESPONSIBILITY FOR THE DESIGN WORK UNDER DIVISION C, PART 3 SECTION 3.2 OF THE ONTARIO BUILDING CODE. I AM QUALIFIED AND THE FIRM IS REGISTERED IN THE APPROPRIATE CATEGORIES.

FIRM BCIN: 36501

DESIGNER BCIN: 21107

SIGNATURE: _____ DATE: _____



LEGEND / LINTELS:

LINTELS:

WOOD	ABBREVIATIONS:
W1 2/2"x8"	DJ DOUBLE JOIST
W2 2/2"x10"	TJ TRIPLE JOIST
W3 2/2"x12"	GT GIRDER TRUSS
W4 3/2"x8"	'DO' DO OVER
W5 3/2"x10"	RJ ROOF JOISTS
W6 3/2"x12"	STL STEEL
LVL (2.0E)	SB. SOLID BEARING (SEE 'FRAMING REQ.'S)
2-LVL 7 2-1 3/4" X 7-1/4"	PL. POINT LOAD
3-LVL 7 3-1 3/4" X 7-1/4"	(FL.) FLUSH
2-LVL 9 2-1 3/4" X 9-1/2"	(DR.) DROPPED
3-LVL 9 3-1 3/4" X 9-1/2"	FG. FIXED GLASS
2-LVL 11 2-1 3/4" X 11-7/8"	FDTN. FOUNDATION
3-LVL 11 3-1 3/4" X 11-7/8"	BG. BLACK GLASS
2-LVL 14 2-1 3/4" X 14"	JT JACK TRUSS
3-LVL 14 3-1 3/4" X 14"	U/S UNDERSIDE
U.N.O. FASTEN MULTIPLE PLY LVL'S	T/O TOP OF
(2) ROWS @ 12" O.C. 3 1/2" (16d) NAILS	FG. FIXED GLASS
OR SDW SCREWS	CLG. CEILING
	BBFM BEAM BY FLOOR MANUFACTURE

STEEL LINTELS

S1 <4'-0" L3-1/2" X 3-1/2" - 1/4"	© GAS LINE
S2 <6'-0" L4" X 3-1/2" X 1/4"	● CABLE LINE
S3 <8'-0" L5" X 3-1/2" X 5/16"	☎ PHONE JACK
S4 <10'-0" L6" X 3-1/2" X 5/16"	☎ CEILING EXHAUST FAN
-BEAR LINTELS MIN. 6" EACH END	P.C. PULL CHAIN CLG. LIGHT
-LINTELS SHALL BE PRIMED TO "OSICOPMA 2-0"	☎ CEILING LIGHT
-ORIENT ANGLES LONG LEG VERT.	3 3 WAY SWITCH
-MAX. 1" BRICK OVERHANG	☎ LIGHT SWITCH
-WEEP HOLES @ 56" O.C. MAX	120 VOLT RECEPTACLE

SR SOLID BEARING (SAME WIDTH AS SUPPORTED MEMBER)	☎ CEILING LIGHT
PL. CONCENTRATED POINT LOAD	3 3 WAY SWITCH
FR FIRE PLACE VENT	☎ LIGHT SWITCH
DRYER VENT	120 VOLT RECEPTACLE
STOVE VENT	☎ ELECTRIC RECEPTACLE (42" OFF FINISH FLOOR)
CELLAR VENT	☎ FLOOR DRAIN
SMOKE ALARM	
CARBON MONOXIDE DETECTOR	
HOSE BIB	
WATERPROOF ELECTRICAL OUTLET	
HOOD/CELLAR VENT	
DRYER VENT	

NO:	REVISION:	DATE:	DWN/CHK
1	Issued for review	MAY04/23	dc b
2	Issued for review	NOV30/23	dc b

PROJECT: V22-0677

334&340 ARDAGH ROAD
BARRIE, ON

PG. CONTENT:

ELEVATIONS

SCALE: 3/16" = 1'-0"

PAGE:

A8



BLOCK 3 TOWNHOUSE

PROPOSED WEST ELEVATION
SCALE: AS NOTED ON PAGE
MODEL #1



BLOCK 3 TOWNHOUSE

PROPOSED EAST ELEVATION
SCALE: AS NOTED ON PAGE
MODEL #1

Preliminary
(Not for Construction)

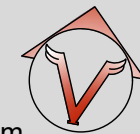
Preliminary
(Not for Construction)

*CONSTRUCTION NOTES ARE THE PROPERTY OF VULCAN DESIGN INC. AND MAY NOT BE DUPLICATED OR COPIED WITH OUT THE WRITTEN CONSENT OF VULCAN DESIGN INC.
*ANY SUBSTITUTE MATERIALS TO NOTES STATED SHALL CONFORM TO O.B.C. REGULATIONS AND MANUFACTURES SPECIFICATIONS SHALL BE SUPPLIED BY BUILDER
**ONLY HEX NOTES IDENTIFIED ON PLANS / ELEVATIONS SHALL APPLY
**NOTES / CONSTRUCTION TO CONFORM TO 2012 ONTARIO BUILDING CODE

VULCAN DESIGN INC.
Professional Service, Exceptional Value

35 MCDONALD STREET
ALLISTON, ON L9R 1J5
PH: 416-885-5200

EMAIL: dberry@vulcandesigninc.com
CONTACT PERSON: DANIEL BERRY



BCIN DECLARATION:

I DANIEL BERRY DECLARE THAT I HAVE REVIEWED & TAKE DESIGN RESPONSIBILITY FOR THE DESIGN WORK UNDER DIVISION C, PART 3 SECTION 3.2 OF THE ONTARIO BUILDING CODE. I AM QUALIFIED AND THE FIRM IS REGISTERED IN THE APPROPRIATE CATEGORIES.

FIRM BCIN: 36501

DESIGNER BCIN: 21107

SIGNATURE: DATE:

LEGEND / LINTELS:

LINTELS:

WOOD	ABBREVIATIONS:
W1 2/2"x8"	DJ DOUBLE JOIST
W2 2/2"x10"	TJ TRIPLE JOIST
W3 2/2"x12"	GT GIRDER TRUSS
W4 3/2"x8"	'DO' DO OVER
W5 3/2"x10"	RJ ROOF JOISTS
W6 3/2"x12"	STL. STEEL
LVL (2.0E)	SB. SOLID BEARING (SEE 'FRAMING REQ.'S)
2-LVL 7 2-1 3/4" X 7-1/4"	PL. POINT LOAD
3-LVL 7 3-1 3/4" X 7-1/4"	(FL.) FLUSH
2-LVL 9 2-1 3/4" X 9-1/2"	(DR.) DROPPED
3-LVL 9 3-1 3/4" X 9-1/2"	FG. FIXED GLASS
2-LVL 11 2-1 3/4" X 11-7/8"	FDTN. FOUNDATION
3-LVL 11 3-1 3/4" X 11-7/8"	BG. BLACK GLASS
2-LVL 14 2-1 3/4" X 14"	JT JACK TRUSS
3-LVL 14 3-1 3/4" X 14"	U/S UNDERSIDE
U.N.O. FASTEN MULTIPLE PLY LVL'S	T/O TOP OF
(2) ROWS @ 12" O.C. 3" (16d) NAILS	FG. FIXED GLASS
OR SDW SCREWS	CLG. CEILING
	BBFM BEAM BY FLOOR MANUFACTURE

STEEL LINTELS

S1 <4'-0" L3-1/2" X 3-1/2" - 1/4"	⊙ GAS LINE
S2 <6'-0" L4" X 3-1/2" X 1/4"	● CABLE LINE
S3 <8'-0" L5" X 3-1/2" X 5/16"	☎ PHONE JACK
S4 <10'-0" L6" X 3-1/2" X 5/16"	⚙ CEILING EXHAUST FAN
-BEAR LINTELS MIN. 6" EACH END	P.C. PULL CHAIN CLG. LIGHT
-LINTELS SHALL BE PRIMED TO 'OSICOPMA 2-3'	⊙ CEILING LIGHT
-ORIENT ANGLES LONG LEG VERT.	3 3 WAY SWITCH
-MAX. 1" BRICK OVERHANG	⚡ LIGHT SWITCH
-WEEP HOLES @ 56" O.C. MAX	120 VOLT RECEPTACLE

SR SOLID BEARING (SAME WIDTH AS SUPPORTED MEMBER)	⊙ 42" ELECTRIC RECEPTACLE (42" OFF FINISH FLOOR)
PL CONCENTRATED POINT LOAD	⊙ FLOOR DRAIN
FR FIRE PLACE VENT	
DRYER VENT	
STOVE VENT	
CELLAR VENT	
SMOKE ALARM	
CARBON MONOXIDE DETECTOR	
HOSE BIB	
WATERPROOF ELECTRICAL OUTLET	
HOOD/CELLAR VENT	
DRYER VENT	

NO.	REVISION :	DATE:	DWN/CHK
1	Issued for review	MAY04/23	dc b
2	Issued for review	NOV30/23	dc b

PROJECT: V22-0677

334&340 ARDAGH ROAD
BARRIE, ON

PG. CONTENT:

ELEVATIONS

SCALE: 3/16" = 1'-0"

PAGE:

A10



BLOCK 4 TOWNHOUSE

PROPOSED WEST ELEVATION 'B'
SCALE: AS NOTED ON PAGE
MODEL #2



BLOCK 4 TOWNHOUSE

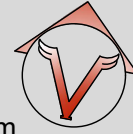
PROPOSED EAST ELEVATION 'B'
SCALE: AS NOTED ON PAGE
MODEL #2

Preliminary
(Not for Construction)

*CONSTRUCTION NOTES ARE THE PROPERTY OF VULCAN DESIGN INC. AND MAY NOT BE DUPLICATED OR COPIED WITH OUT THE WRITTEN CONSENT OF VULCAN DESIGN INC.
*ANY SUBSTITUTE MATERIALS TO NOTES STATED SHALL CONFORM TO O.B.C. REGULATIONS AND MANUFACTURES SPECIFICATIONS SHALL BE SUPPLIED BY BUILDER
**ONLY HEX NOTES IDENTIFIED ON PLANS / ELEVATIONS SHALL APPLY
*NOTES / CONSTRUCTION TO CONFORM TO 2012 ONTARIO BUILDING CODE

VULCAN DESIGN INC.
Professional Service, Exceptional Value

35 McDONALD STREET
ALLISTON, ON L9R 1J5
PH: 416-885-5200



EMAIL: dberry@vulcandesigninc.com
CONTACT PERSON: DANIEL BERRY

BCIN DECLARATION:

I DANIEL BERRY DECLARE THAT I HAVE REVIEWED & TAKE DESIGN RESPONSIBILITY FOR THE DESIGN WORK UNDER DIVISION C, PART 3 SECTION 3.2 OF THE ONTARIO BUILDING CODE. I AM QUALIFIED AND THE FIRM IS REGISTERED IN THE APPROPRIATE CATEGORIES.

FIRM BCIN: 36501

DESIGNER BCIN: 21107

SIGNATURE: _____ DATE: _____

LEGEND / LINTELS:

LINTELS:

WOOD

W1 2/2"x8"

W2 2/2"x10"

W3 2/2"x12"

W4 3/2"x8"

W5 3/2"x10"

W6 3/2"x12"

LVL (2.0E)

2-LVL 7 2-1 3/4" X 7-1/4"

3-LVL 7 3-1 3/4" X 7-1/4"

2-LVL 9 2-1 3/4" X 9-1/2"

3-LVL 9 3-1 3/4" X 9-1/2"

2-LVL 11 2-1 3/4" X 11-7/8"

3-LVL 11 3-1 3/4" X 11-7/8"

2-LVL 14 2-1 3/4" X 14"

3-LVL 14 3-1 3/4" X 14"

U.N.O. FASTEN MULTIPLE PLY LVL'S

(2) ROWS @ 12" O.C. 3" (16d) NAILS

OR SDW SCREWS

STEEL LINTELS

S1 <4'-0" L3-1/2" X 3-1/2" - 1/4"

S2 <6'-0" L4" X 3-1/2" X 1/4"

S3 <8'-0" L5" X 3-1/2" X 5/16"

S4 <10'-0" L6" X 3-1/2" X 5/16"

-BEAR LINTELS MIN. 6" EACH END

-LINTELS SHALL BE PRIMED TO

"OSB/CMPA-2-3"

-ORIENT ANGLES LONG LEG VERT.

-MAX. 1" BRICK OVERHANG

-WEEP HOLES @ 56" O.C. MAX

ABBREVIATIONS:

DJ DOUBLE JOIST

TJ TRIPLE JOIST

GT GIRDER TRUSS

'DO' DO OVER

RJ ROOF JOISTS

STL STEEL

SB. SOLID BEARING

(SEE 'FRAMING REQ.'S)

PL. POINT LOAD

(FL.) FLUSH

(DR.) DROPPED

FG. FIXED GLASS

FDTN. FOUNDATION

BG. BLACK GLASS

JT JACK TRUSS

U/S UNDERSIDE

T/O TOP OF

FG. FIXED GLASS

CLG. CEILING

BBFM BEAM BY FLOOR

MANUFACTURE

SB. SOLID BEARING

(SAME WIDTH AS

SUPPORTED MEMBER)

PL. CONCENTRATED

POINT LOAD

FP. FIRE PLACE VENT

DRYER VENT

STOVE VENT

CELLAR VENT

SMOKE ALARM

CARBON MONOXIDE

DETECTOR

HOSE BIB

WATERPROOF

ELECTRICAL OUTLET

HOOD/CELLAR VENT

DRYER VENT

Ⓢ GAS LINE

● CABLE LINE

☎ PHONE JACK

⚙ CEILING EXHAUST FAN

P.C. PULL CHAIN CLG. LIGHT

⚙ CEILING LIGHT

3 3 WAY SWITCH

⚙ LIGHT SWITCH

⚙ 120 VOLT RECEPTACLE

⚙ ELECTRIC RECEPTACLE

(42" OFF FINISH FLOOR)

⚙ FLOOR DRAIN

NO: REVISION: DATE: DWN/CHK

1 Issued for review MAY04/23 dcb dcb

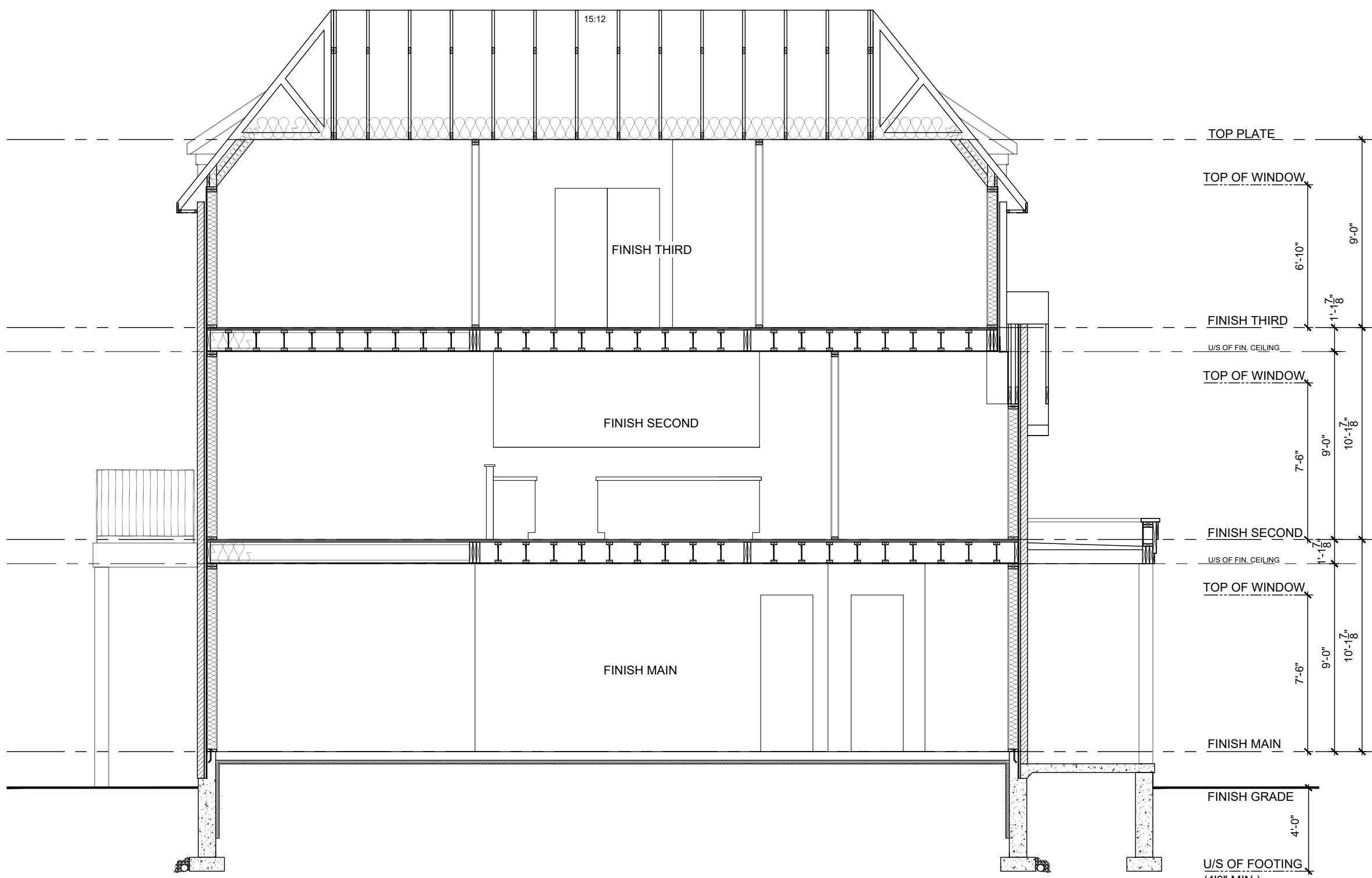
2 Issued for review NOV30/23 dcb

PROJECT: V22-0677
334&340 ARDAGH ROAD
BARRIE, ON

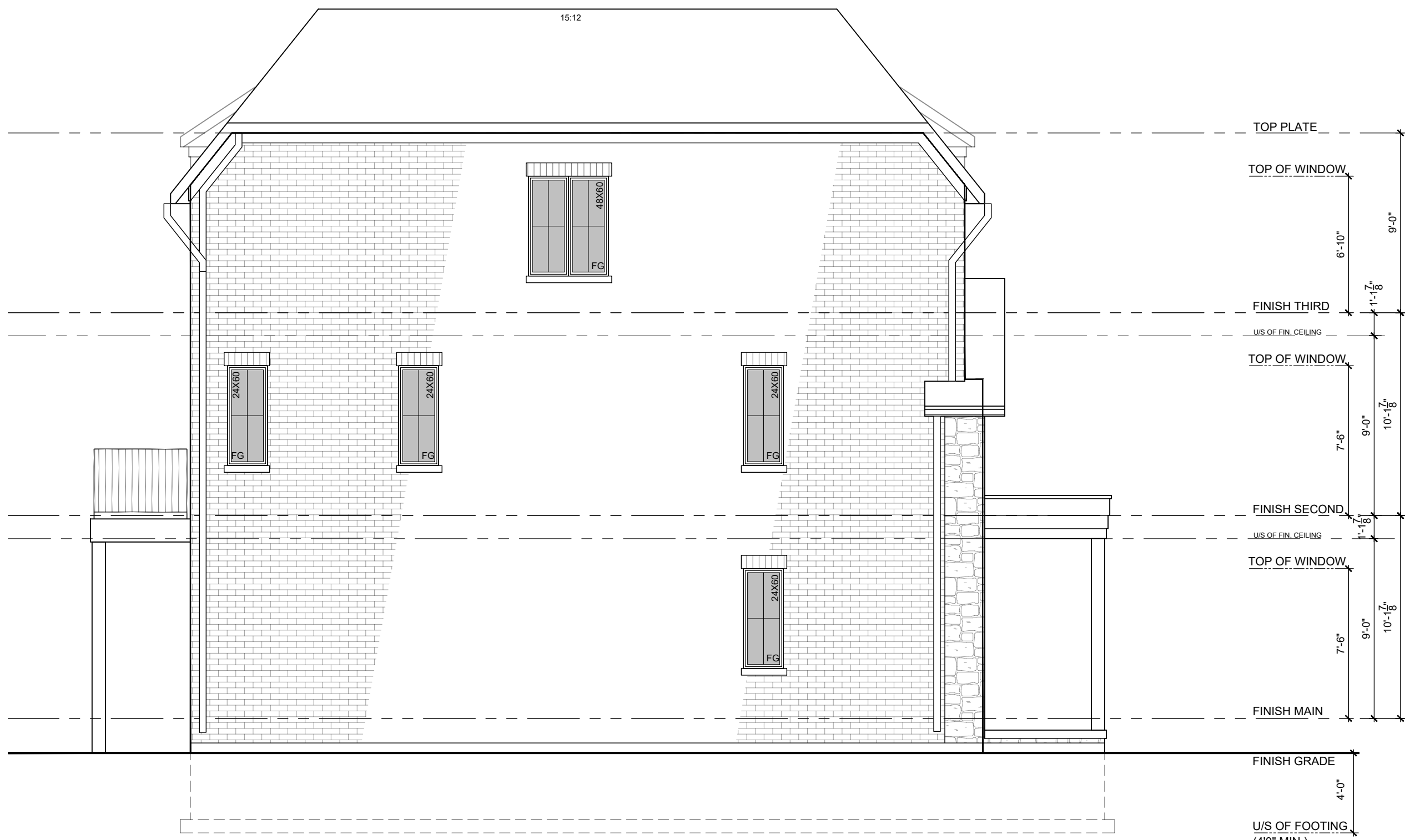
PG. CONTENT: ELEVATIONS
SCALE: 3/16" = 1'-0"

PAGE: A11

Preliminary
(Not for Construction)



TYPICAL BUILDING SECTION
SCALE: AS NOTED ON PAGE



BLOCK 4 TOWNHOUSE
PROPOSED NORTH ELEVATION 'B'
MODEL #2



BLOCK 4 TOWNHOUSE
PROPOSED SOUTH ELEVATION
MODEL #1 ELEVATION 'B'